

<b>IH 94: CARMICHAEL RD TO STH 35 S (ST CROIX COUNTY)</b> <b>OFF-PEAK DAY 2 LANE CLOSURE</b> <b>DIVERSION ROUTE: CARMICHAEL RD - STAGELINE RD - USH 12</b>	<b>AUGUST</b>
	Analyzed for 2009 Construction Season

**SUMMARY OF TRAFFIC MODEL OUTPUT**

**SATURDAY WESTBOUND DIRECTION**

TIME OF DAY	FLOWS AND CAPACITY IN VEH/HR								AVERAGE SPEEDS IN MPH						
	MAIN ROUTE		ALTERNATE ROUTE		SITE CAPA CITY	FLOW MAIN ROUTE	FLOW DIVER -TING	TOTAL DIVN FLOW	AV.DEL PER VEH (MINS)	AVERAGE QUEUE (VEH)	MAIN ROUTE		ALTERNATE ROUTE		
	DEMAND FLOW	PCT HEAVY	NORMAL FLOW	PCT HEAVY							WITHOUT WORK ZN	WITH WORK ZN	SITE	WITHOUT WORK ZN	WITH WORK ZN
MID-1 AM	621	0.0	41	0.0	OFF	621	0	41	0.00	0	70.0	70.0	70.0	19.6	19.6
1-2 AM	445	0.0	29	0.0	OFF	445	0	29	0.00	0	70.2	70.2	70.2	19.7	19.7
2-3 AM	368	0.0	25	0.0	OFF	368	0	25	0.00	0	70.2	70.2	70.2	19.7	19.7
3-4 AM	394	0.0	26	0.0	OFF	394	0	26	0.00	0	70.2	70.2	70.2	19.7	19.7
4-5 AM	489	0.0	32	0.0	OFF	489	0	32	0.00	0	70.1	70.1	70.1	19.7	19.7
5-6 AM	585	0.0	39	0.0	OFF	585	0	39	0.00	0	70.0	70.0	70.0	19.6	19.6
6-7 AM	667	0.0	44	0.0	OFF	667	0	44	0.00	0	69.9	69.9	69.9	19.6	19.6
7-8 AM	1039	0.0	69	0.0	OFF	1039	0	69	0.00	0	69.4	69.4	69.4	19.4	19.4
8-9 AM	1419	0.0	94	0.0	1499	1419	0	94	1.09	3	69.0	35.1	33.0	19.3	19.3
9-10 AM	1939	0.0	129	0.0	1500	1697	242	371	6.18	145	68.3	11.7	30.8	19.1	18.2
10-11 AM	2504	0.0	165	0.0	1500	1574	930	1095	11.00	260	67.6	8.1	30.8	18.8	14.4
11A-NOON	2622	0.0	174	0.0	1499	1508	1114	1288	12.23	292	67.5	7.6	30.8	18.8	13.3
NOON-1PM	2542	0.0	169	0.0	1499	1486	1056	1225	11.79	280	67.6	7.8	30.8	18.8	13.7
1-2 PM	2716	0.0	179	0.0	1500	1537	1179	1358	12.79	307	67.4	7.5	30.8	18.8	12.9
2-3 PM	2633	0.0	174	0.0	1499	1477	1156	1330	12.56	300	67.4	7.6	30.8	18.8	13.0
3-4 PM	2631	0.0	174	0.0	1500	1498	1133	1307	12.37	296	67.4	7.6	30.8	18.8	13.2
4-5 PM	2490	0.0	165	0.0	1499	1468	1022	1187	11.55	274	67.6	7.9	30.8	18.8	13.8
5-6 PM	2226	0.0	147	0.0	1500	1459	767	914	10.01	234	67.9	8.6	30.8	18.9	15.4
6-7 PM	1958	0.0	130	0.0	OFF	1958	0	130	0.06	5	68.3	64.6	64.6	19.1	19.1
7-8 PM	1654	0.0	109	0.0	OFF	1654	0	109	0.00	0	68.7	68.7	68.7	19.2	19.2
8-9 PM	1448	0.0	96	0.0	OFF	1448	0	96	0.00	0	68.9	68.9	68.9	19.3	19.3
9-10 PM	1300	0.0	86	0.0	OFF	1300	0	86	0.00	0	69.1	69.1	69.1	19.3	19.3
10-11 PM	973	0.0	65	0.0	OFF	973	0	65	0.00	0	69.6	69.6	69.6	19.5	19.5
11PM-MID	634	0.0	42	0.0	OFF	634	0	42	0.00	0	69.9	69.9	69.9	19.6	19.6

"OFF" INDICATES NO ROAD WORK (ALL LANES OPEN TO TRAFFIC)

*----- SITE BREAKDOWN DELAYS -----*	
BREAKDOWN DURATION (MINS)	0
RANGE OF QUEUE DELAY - MIN	0.0
(VEH-H) MAX	0.0
RANGE OF DIVN DELAY - MIN	0.0
(VEH-H) MAX	0.0
AV BREAKDOWNS PER DAY	0.00
AV QUEUE DELAY/DAY (VEH-H)	0.0
AV DIVN DELAY/DAY (VEH-H)	0.0
AV TOTAL DELAY/DAY (VEH-H)	0.0

*----- SITE ACCIDENT DELAYS -----*	
ACCIDENT DURATION (MINS)	0
RANGE OF QUEUE DELAY - MIN	0.0
(VEH-H) MAX	0.0
RANGE OF DIVN DELAY - MIN	0.0
(VEH-H) MAX	0.0
AV ACCIDENTS PER DAY	0.00
AV QUEUE DELAY/DAY (VEH-H)	0.0
AV DIVN DELAY/DAY (VEH-H)	0.0
AV TOTAL DELAY/DAY (VEH-H)	0.0

AVERAGE ACCIDENT NUMBERS (PIA/DAY)	
MAIN ROUTE WITHOUT WORKS	0.0075
MAIN ROUTE WITH WORKS	0.0047
DIVERSION	0.0336

PIA: Personal Injury Accidents

IMPACTS ON ROAD USERS	
ROAD USER COSTS PER DAY ( DOLLARS)	\$75,761
CONGESTED HOURS PER DAY*	0

\*Delays Exceeding 15 Minutes

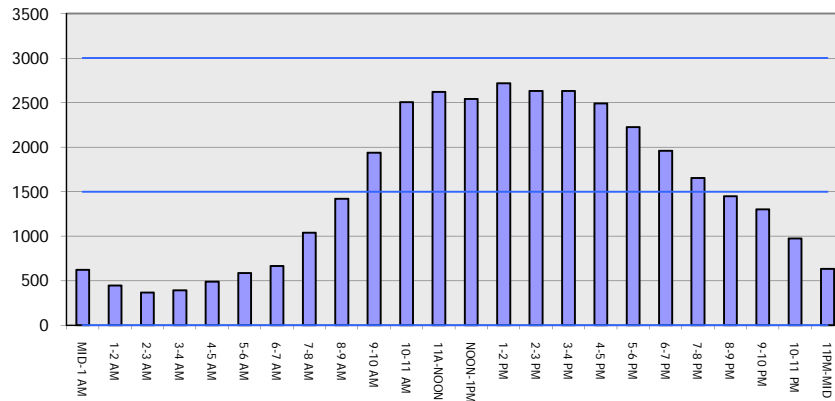
**IH 94: CARMICHAEL RD TO STH 35 S (ST CROIX COUNTY)**  
**OFF-PEAK DAY 2 LANE CLOSURE**  
**DIVERSION ROUTE: CARMICHAEL RD - STAGELINE RD - USH 12**

**AUGUST**  
 Analyzed for 2009  
 Construction Season

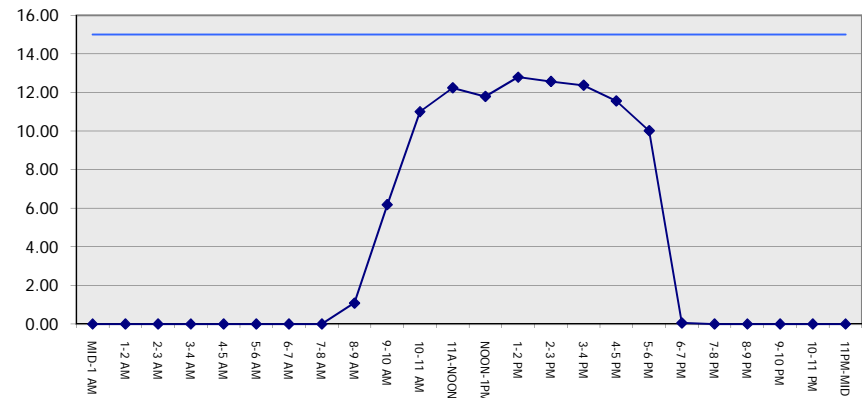
**GRAPHICAL REPRESENTATION OF TRAFFIC MODEL INPUT AND OUTPUT**

**SATURDAY WESTBOUND DIRECTION**

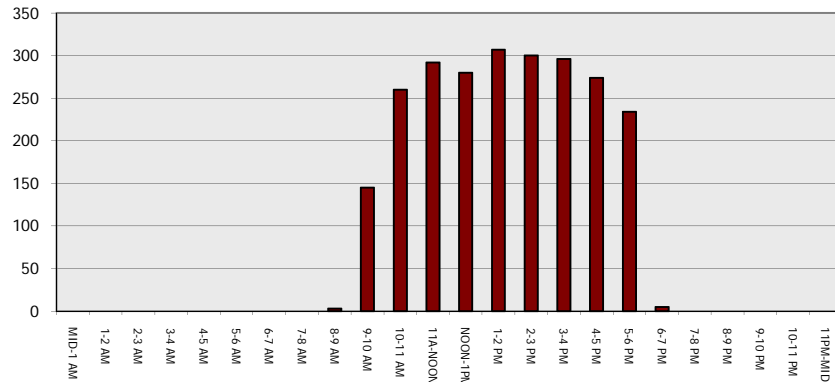
**Main Route - Traffic Demand (Vehicles Per Hour)**



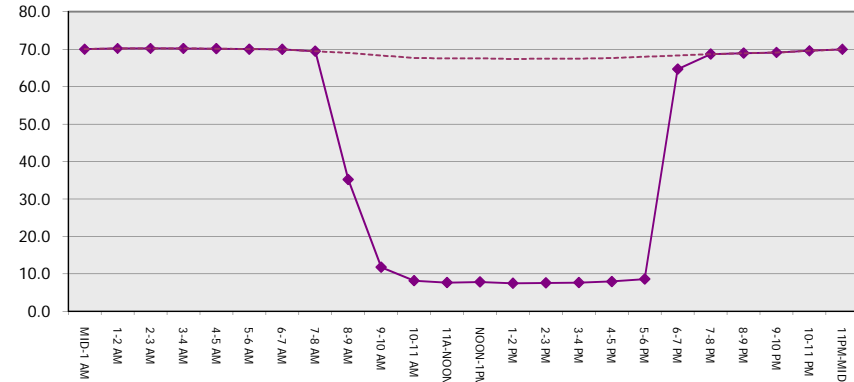
**Main Route Average Delay Per Vehicle (Minutes)**



**Main Route - Average Queue Length (Vehicles)**



**Main Route - Average Speed (MPH)**



<b>IH 94: CARMICHAEL RD TO STH 35 S (ST CROIX COUNTY)</b> <b>OFF-PEAK DAY 2 LANE CLOSURE</b> <b>DIVERSION ROUTE: CARMICHAEL RD - STAGELINE RD - USH 12</b>	<b>AUGUST</b>
	Analyzed for 2009 Construction Season

<b>SUMMARY OF TRAFFIC MODEL OUTPUT</b>	
SATURDAY	EASTBOUND DIRECTION

TIME OF DAY	FLOWS AND CAPACITY IN VEH/HR							AVERAGE SPEEDS IN MPH			AVERAGE SPEEDS IN MPH				
	MAIN		DIVERSION		SITE CAPA CITY	FLOW MAIN ROUTE	FLOW DIVER -TING	TOTAL DIVN FLOW	AV.DEL PER VEH (MINS)	AVERAGE QUEUE (VEH)	MAIN ROUTE		ALTERNATE ROUTE		
	DEMAND FLOW	PCT HEAVY	NORMAL FLOW	PCT HEAVY							WITHOUT WORK ZN	WITH WORK ZN	SITE	WITHOUT WORK ZN	WITH WORK ZN
MID-1 AM	639	0.0	42	0.0	OFF	639	0	42	0.00	0	69.9	69.9	69.9	19.6	19.6
1-2 AM	379	0.0	25	0.0	OFF	379	0	25	0.00	0	70.2	70.2	70.2	19.7	19.7
2-3 AM	313	0.0	21	0.0	OFF	313	0	21	0.00	0	70.2	70.2	70.2	19.7	19.7
3-4 AM	284	0.0	18	0.0	OFF	284	0	18	0.00	0	70.2	70.2	70.2	19.7	19.7
4-5 AM	354	0.0	24	0.0	OFF	354	0	24	0.00	0	70.2	70.2	70.2	19.7	19.7
5-6 AM	529	0.0	35	0.0	OFF	529	0	35	0.00	0	70.0	70.0	70.0	19.7	19.7
6-7 AM	974	0.0	65	0.0	OFF	974	0	65	0.00	0	69.6	69.6	69.6	19.5	19.5
7-8 AM	1649	0.0	109	0.0	OFF	1649	0	109	0.00	0	68.7	68.7	68.7	19.2	19.2
8-9 AM	2353	0.0	156	0.0	1499	1774	580	735	9.34	226	67.8	9.1	30.8	18.9	16.5
9-10 AM	2899	0.0	192	0.0	1500	1616	1283	1475	13.85	336	67.1	7.2	30.8	18.7	12.2
10-11 AM	3275	0.0	217	0.0	1499	1500	1774	1992+	16.42	402	66.7	6.6	30.8	18.5	10.9
11A-NOON	3112	0.0	206	0.0	1500	1508	1604	1811+	16.35	400	66.9	6.6	30.8	18.6	10.9
NOON-1PM	2861	0.0	189	0.0	1500	1442	1419	1608+	15.20	370	67.2	6.8	30.8	18.7	11.4
1-2 PM	2561	0.0	170	0.0	1499	1432	1129	1299	12.34	295	67.6	7.6	30.8	18.8	13.2
2-3 PM	2410	0.0	160	0.0	1500	1479	931	1091	10.96	258	67.8	8.1	30.8	18.9	14.4
3-4 PM	2328	0.0	155	0.0	1500	1485	842	997	10.44	245	67.8	8.4	30.8	18.9	14.9
4-5 PM	2046	0.0	135	0.0	1499	1464	581	716	9.11	210	68.2	9.1	30.8	19.0	16.5
5-6 PM	1952	0.0	130	0.0	1500	1490	462	591	8.61	196	68.3	9.4	30.8	19.1	17.2
6-7 PM	1671	0.0	110	0.0	OFF	1671	0	110	0.05	4	68.7	66.0	66.0	19.2	19.2
7-8 PM	1454	0.0	96	0.0	OFF	1454	0	96	0.00	0	68.9	68.9	68.9	19.3	19.3
8-9 PM	1282	0.0	84	0.0	OFF	1282	0	84	0.00	0	69.1	69.1	69.1	19.4	19.4
9-10 PM	1081	0.0	71	0.0	OFF	1081	0	71	0.00	0	69.4	69.4	69.4	19.4	19.4
10-11 PM	856	0.0	56	0.0	OFF	856	0	56	0.00	0	69.7	69.7	69.7	19.5	19.5
11PM-MID	640	0.0	42	0.0	OFF	640	0	42	0.00	0	69.9	69.9	69.9	19.6	19.6

"OFF" INDICATES NO ROAD WORK (ALL LANES OPEN TO TRAFFIC)

+ INDICATES DIVERSION FLOW EXCEEDS USER-SPECIFIED WARNING LIMIT

*----- SITE BREAKDOWN DELAYS -----*	
BREAKDOWN DURATION (MINS)	0
RANGE OF QUEUE DELAY - MIN	0.0
(VEH-H) MAX	0.0
RANGE OF DIVN DELAY - MIN	0.0
(VEH-H) MAX	0.0
AV BREAKDOWNS PER DAY	0.00
AV QUEUE DELAY/DAY (VEH-H)	0.0
AV DIVN DELAY/DAY (VEH-H)	0.0
AV TOTAL DELAY/DAY (VEH-H)	0.0

*----- SITE ACCIDENT DELAYS -----*	
ACCIDENT DURATION (MINS)	0
RANGE OF QUEUE DELAY - MIN	0.0
(VEH-H) MAX	0.0
RANGE OF DIVN DELAY - MIN	0.0
(VEH-H) MAX	0.0
AV ACCIDENTS PER DAY	0.00
AV QUEUE DELAY/DAY (VEH-H)	0.0
AV DIVN DELAY/DAY (VEH-H)	0.0
AV TOTAL DELAY/DAY (VEH-H)	0.0

AVERAGE ACCIDENT NUMBERS (PIA/DAY)	
MAIN ROUTE WITHOUT WORKS	0.0078
MAIN ROUTE WITH WORKS	0.0046
DIVERSION	0.0400

PIA: Personal Injury Accidents

IMPACTS ON ROAD USERS	
ROAD USER COSTS PER DAY ( DOLLARS)	\$97,629
CONGESTED HOURS PER DAY*	3

\*Delays Exceeding 15 Minutes

**IH 94: CARMICHAEL RD TO STH 35 S (ST CROIX COUNTY)**  
**OFF-PEAK DAY 2 LANE CLOSURE**  
**DIVERSION ROUTE: CARMICHAEL RD - STAGELINE RD - USH 12**

**AUGUST**  
 Analyzed for 2009  
 Construction Season

**GRAPHICAL REPRESENTATION OF TRAFFIC MODEL INPUT AND OUTPUT**  
**SATURDAY EASTBOUND DIRECTION**

