

<b>IH 94: CARMICHAEL RD TO STH 35 S (ST CROIX COUNTY)</b> <b>OFF-PEAK DAY 2 LANE CLOSURE</b> <b>DIVERSION ROUTE: CARMICHAEL RD - STAGELINE RD - USH 12</b>	<b>MAY</b>
	Analyzed for 2009 Construction Season

**SUMMARY OF TRAFFIC MODEL OUTPUT**

SUNDAY WESTBOUND DIRECTION

TIME OF DAY	FLOWS AND CAPACITY IN VEH/HR										AVERAGE SPEEDS IN MPH				
	MAIN ROUTE		ALTERNATE ROUTE		SITE CAPA CITY	FLOW MAIN ROUTE	FLOW DIVER -TING	TOTAL DIVN FLOW	AV.DEL PER VEH (MINS)	AVERAGE QUEUE (VEH)	MAIN ROUTE		ALTERNATE ROUTE		
	DEMAND FLOW	PCT HEAVY	NORMAL FLOW	PCT HEAVY							WITHOUT WORK ZN	WITH WORK ZN	SITE	WITHOUT WORK ZN	WITH WORK ZN
MID-1 AM	326	0.0	22	0.0	OFF	326	0	22	0.00	0	70.2	70.2	70.2	19.7	19.7
1-2 AM	270	0.0	18	0.0	OFF	270	0	18	0.00	0	70.2	70.2	70.2	19.7	19.7
2-3 AM	196	0.0	13	0.0	OFF	196	0	13	0.00	0	70.2	70.2	70.2	19.8	19.8
3-4 AM	197	0.0	13	0.0	OFF	197	0	13	0.00	0	70.2	70.2	70.2	19.8	19.8
4-5 AM	216	0.0	14	0.0	OFF	216	0	14	0.00	0	70.2	70.2	70.2	19.8	19.8
5-6 AM	285	0.0	18	0.0	OFF	285	0	18	0.00	0	70.2	70.2	70.2	19.7	19.7
6-7 AM	406	0.0	27	0.0	OFF	406	0	27	0.00	0	70.2	70.2	70.2	19.7	19.7
7-8 AM	628	0.0	42	0.0	OFF	628	0	42	0.00	0	69.9	69.9	69.9	19.6	19.6
8-9 AM	975	0.0	65	0.0	OFF	975	0	65	0.00	0	69.6	69.6	69.6	19.5	19.5
9-10 AM	1365	0.0	91	0.0	1499	1365	0	91	0.91	0	69.1	38.2	34.0	19.3	19.3
10-11 AM	1845	0.0	122	0.0	1499	1714	130	253	4.87	116	68.4	13.8	30.8	19.1	18.8
11A-NOON	2284	0.0	151	0.0	1499	1534	750	902	9.95	232	67.9	8.6	30.8	18.9	15.5
NOON-1PM	2470	0.0	163	0.0	1499	1527	943	1106	11.05	261	67.7	8.1	30.8	18.9	14.3
1-2 PM	2739	0.0	182	0.0	1500	1563	1176	1358	12.79	307	67.3	7.5	30.8	18.8	12.9
2-3 PM	3145	0.0	209	0.0	1500	1563	1582	1791+	15.91	389	66.8	6.6	30.8	18.6	11.1
3-4 PM	3477	0.0	230	0.0	1500	1500	1978	2208+	16.41	402	66.4	6.6	30.8	18.4	10.9
4-5 PM	3570	0.0	237	0.0	1499	1500	2070	2307+	16.41	402	66.3	6.6	30.8	18.4	10.9
5-6 PM	3500	0.0	232	0.0	1500	1500	2000	2232+	16.41	402	66.4	6.6	30.8	18.4	10.9
6-7 PM	3174	0.0	210	0.0	1500	1500	1674	1884+	16.39	401	66.8	6.6	30.8	18.6	10.9
7-8 PM	2768	0.0	184	0.0	OFF	2768	0	184	0.26	24	67.3	55.0	55.0	18.8	18.8
8-9 PM	2409	0.0	160	0.0	OFF	2409	0	160	0.00	0	67.8	67.8	67.8	18.9	18.9
9-10 PM	1860	0.0	123	0.0	OFF	1860	0	123	0.00	0	68.4	68.4	68.4	19.1	19.1
10-11 PM	1385	0.0	92	0.0	OFF	1385	0	92	0.00	0	69.0	69.0	69.0	19.3	19.3
11PM-MID	790	0.0	52	0.0	OFF	790	0	52	0.00	0	69.7	69.7	69.7	19.6	19.6

"OFF" INDICATES NO ROAD WORK (ALL LANES OPEN TO TRAFFIC)

+ INDICATES DIVERSION FLOW EXCEEDS USER-SPECIFIED WARNING LIMIT

*----- SITE BREAKDOWN DELAYS -----*	
BREAKDOWN DURATION (MINS)	0
RANGE OF QUEUE DELAY - MIN (VEH-H) MAX	0.0
RANGE OF DIVN DELAY - MIN (VEH-H) MAX	0.0
AV BREAKDOWNS PER DAY	0.00
AV QUEUE DELAY/DAY (VEH-H)	0.0
AV DIVN DELAY/DAY (VEH-H)	0.0
AV TOTAL DELAY/DAY (VEH-H)	0.0

*----- SITE ACCIDENT DELAYS -----*	
ACCIDENT DURATION (MINS)	0
RANGE OF QUEUE DELAY - MIN (VEH-H) MAX	0.0
RANGE OF DIVN DELAY - MIN (VEH-H) MAX	0.0
AV ACCIDENTS PER DAY	0.00
AV QUEUE DELAY/DAY (VEH-H)	0.0
AV DIVN DELAY/DAY (VEH-H)	0.0
AV TOTAL DELAY/DAY (VEH-H)	0.0

AVERAGE ACCIDENT NUMBERS (PIA/DAY)	
MAIN ROUTE WITHOUT WORKS	0.0083
MAIN ROUTE WITH WORKS	0.0048
DIVERSION	0.0457

PIA: Personal Injury Accidents

IMPACTS ON ROAD USERS	
ROAD USER COSTS PER DAY ( DOLLARS)	\$111,072
CONGESTED HOURS PER DAY*	5

\*Delays Exceeding 15 Minutes

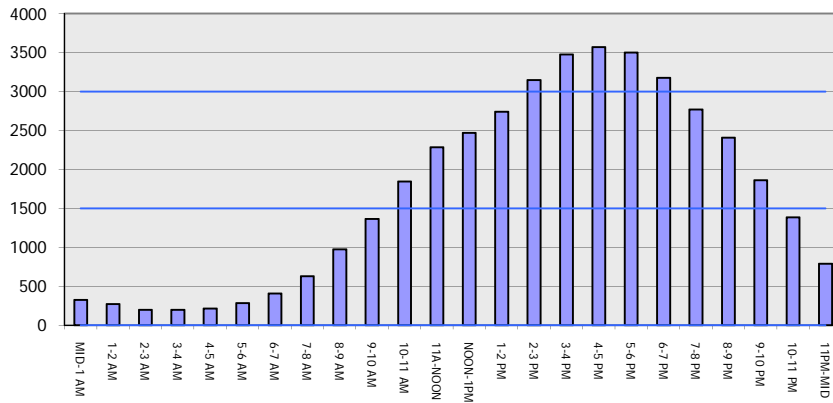
**IH 94: CARMICHAEL RD TO STH 35 S (ST CROIX COUNTY)**  
**OFF-PEAK DAY 2 LANE CLOSURE**  
**DIVERSION ROUTE: CARMICHAEL RD - STAGELINE RD - USH 12**

**MAY**  
 Analyzed for 2009  
 Construction Season

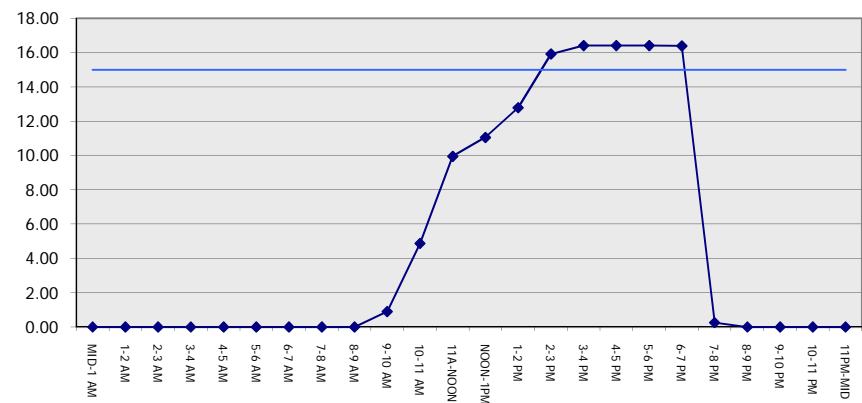
**GRAPHICAL REPRESENTATION OF TRAFFIC MODEL INPUT AND OUTPUT**

**SUNDAY WESTBOUND DIRECTION**

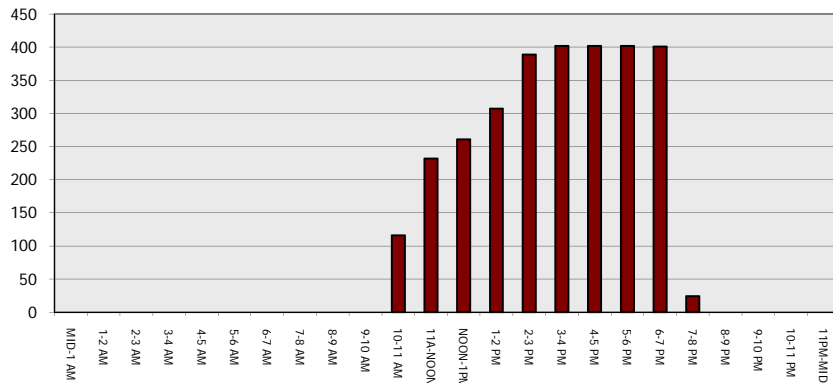
**Main Route - Traffic Demand (Vehicles Per Hour)**



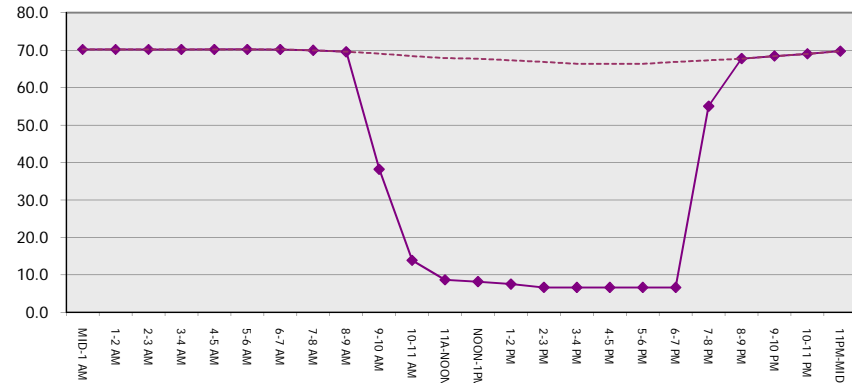
**Main Route Average Delay Per Vehicle (Minutes)**



**Main Route - Average Queue Length (Vehicles)**



**Main Route - Average Speed (MPH)**



<b>IH 94: CARMICHAEL RD TO STH 35 S (ST CROIX COUNTY)</b> <b>OFF-PEAK DAY 2 LANE CLOSURE</b> <b>DIVERSION ROUTE: CARMICHAEL RD - STAGELINE RD - USH 12</b>	<b>MAY</b>
	Analyzed for 2009 Construction Season

**SUMMARY OF TRAFFIC MODEL OUTPUT**

SUNDAY EASTBOUND DIRECTION

TIME OF DAY	FLOWS AND CAPACITY IN VEH/HR							AVERAGE SPEEDS IN MPH			AVERAGE SPEEDS IN MPH				
	MAIN		DIVERSION		SITE CAPA CITY	FLOW MAIN ROUTE	FLOW DIVER -TING	TOTAL DIVN FLOW	AV.DEL PER VEH (MINS)	AVERAGE QUEUE (VEH)	MAIN ROUTE		ALTERNATE ROUTE		
	DEMAND FLOW	PCT HEAVY	NORMAL FLOW	PCT HEAVY							WITHOUT WORK ZN	WITH WORK ZN	SITE	WITHOUT WORK ZN	WITH WORK ZN
MID-1 AM	318	0.0	21	0.0	OFF	318	0	21	0.00	0	70.2	70.2	70.2	19.7	19.7
1-2 AM	206	0.0	14	0.0	OFF	206	0	14	0.00	0	70.2	70.2	70.2	19.8	19.8
2-3 AM	168	0.0	11	0.0	OFF	168	0	11	0.00	0	70.2	70.2	70.2	19.8	19.8
3-4 AM	154	0.0	10	0.0	OFF	154	0	10	0.00	0	70.2	70.2	70.2	19.8	19.8
4-5 AM	190	0.0	13	0.0	OFF	190	0	13	0.00	0	70.2	70.2	70.2	19.8	19.8
5-6 AM	293	0.0	19	0.0	OFF	293	0	19	0.00	0	70.2	70.2	70.2	19.7	19.7
6-7 AM	537	0.0	36	0.0	OFF	537	0	36	0.00	0	70.0	70.0	70.0	19.6	19.6
7-8 AM	856	0.0	56	0.0	OFF	856	0	56	0.00	0	69.7	69.7	69.7	19.5	19.5
8-9 AM	1285	0.0	85	0.0	OFF	1285	0	85	0.00	0	69.1	69.1	69.1	19.3	19.3
9-10 AM	1859	0.0	123	0.0	1499	1722	137	261	4.78	115	68.4	14.0	30.8	19.1	18.7
10-11 AM	2411	0.0	160	0.0	1499	1549	862	1022	10.58	249	67.8	8.3	30.8	18.9	14.8
11A-NOON	2566	0.0	170	0.0	1499	1517	1049	1219	11.75	279	67.6	7.8	30.8	18.8	13.7
NOON-1PM	2650	0.0	175	0.0	1499	1514	1136	1311	12.40	296	67.4	7.6	30.8	18.8	13.2
1-2 PM	2669	0.0	177	0.0	1499	1501	1168	1345	12.68	304	67.4	7.5	30.8	18.8	13.0
2-3 PM	2619	0.0	173	0.0	1499	1487	1132	1305	12.36	295	67.5	7.6	30.8	18.8	13.2
3-4 PM	2574	0.0	171	0.0	1500	1492	1082	1253	11.98	285	67.6	7.8	30.8	18.8	13.5
4-5 PM	2540	0.0	169	0.0	1500	1489	1050	1219	11.75	279	67.6	7.8	30.8	18.8	13.7
5-6 PM	2302	0.0	153	0.0	1499	1456	845	998	10.45	245	67.9	8.4	30.8	18.9	14.9
6-7 PM	1957	0.0	130	0.0	1500	1459	498	628	8.76	201	68.3	9.3	30.8	19.1	17.0
7-8 PM	1640	0.0	108	0.0	OFF	1640	0	108	0.04	4	68.7	66.1	66.1	19.2	19.2
8-9 PM	1266	0.0	84	0.0	OFF	1266	0	84	0.00	0	69.2	69.2	69.2	19.4	19.4
9-10 PM	950	0.0	63	0.0	OFF	950	0	63	0.00	0	69.6	69.6	69.6	19.5	19.5
10-11 PM	671	0.0	44	0.0	OFF	671	0	44	0.00	0	69.9	69.9	69.9	19.6	19.6
11PM-MID	543	0.0	36	0.0	OFF	543	0	36	0.00	0	70.0	70.0	70.0	19.6	19.6

"OFF" INDICATES NO ROAD WORK (ALL LANES OPEN TO TRAFFIC)

*----- SITE BREAKDOWN DELAYS -----*	
BREAKDOWN DURATION (MINS)	0
RANGE OF QUEUE DELAY - MIN	0.0
(VEH-H) MAX	0.0
RANGE OF DIVN DELAY - MIN	0.0
(VEH-H) MAX	0.0
AV BREAKDOWNS PER DAY	0.00
AV QUEUE DELAY/DAY (VEH-H)	0.0
AV DIVN DELAY/DAY (VEH-H)	0.0
AV TOTAL DELAY/DAY (VEH-H)	0.0

*----- SITE ACCIDENT DELAYS -----*	
ACCIDENT DURATION (MINS)	0
RANGE OF QUEUE DELAY - MIN	0.0
(VEH-H) MAX	0.0
RANGE OF DIVN DELAY - MIN	0.0
(VEH-H) MAX	0.0
AV ACCIDENTS PER DAY	0.00
AV QUEUE DELAY/DAY (VEH-H)	0.0
AV DIVN DELAY/DAY (VEH-H)	0.0
AV TOTAL DELAY/DAY (VEH-H)	0.0

AVERAGE ACCIDENT NUMBERS (PIA/DAY)	
MAIN ROUTE WITHOUT WORKS	0.0069
MAIN ROUTE WITH WORKS	0.0040
DIVERSION	0.0341

PIA: Personal Injury Accidents

IMPACTS ON ROAD USERS	
ROAD USER COSTS PER DAY ( DOLLARS)	\$79,478
CONGESTED HOURS PER DAY*	0

\*Delays Exceeding 15 Minutes

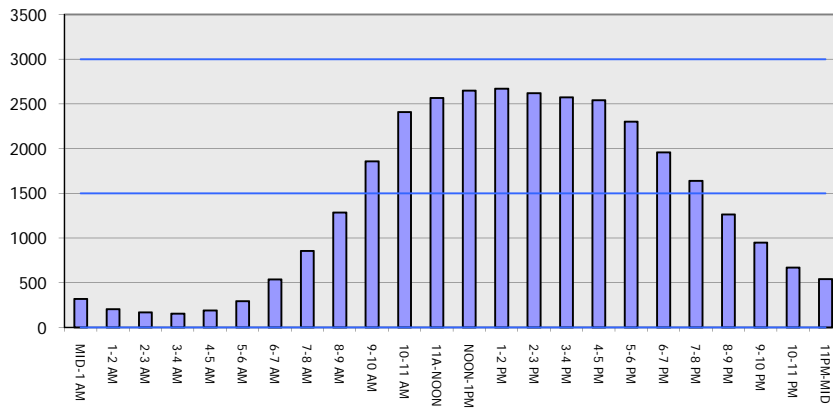
**IH 94: CARMICHAEL RD TO STH 35 S (ST CROIX COUNTY)**  
**OFF-PEAK DAY 2 LANE CLOSURE**  
**DIVERSION ROUTE: CARMICHAEL RD - STAGELINE RD - USH 12**

**MAY**  
 Analyzed for 2009  
 Construction Season

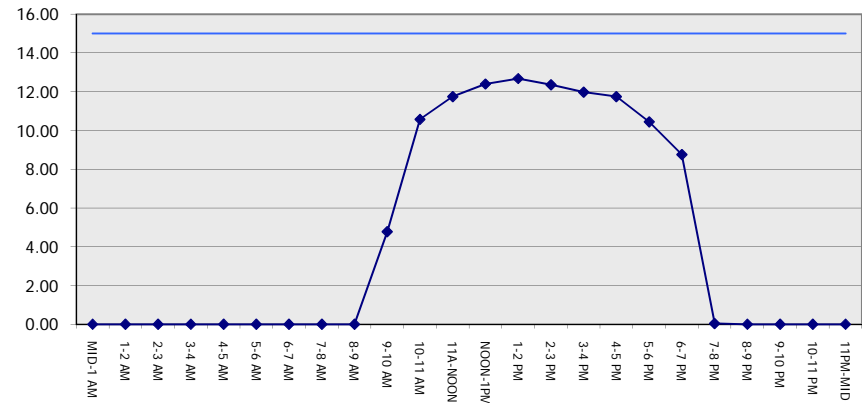
**GRAPHICAL REPRESENTATION OF TRAFFIC MODEL INPUT AND OUTPUT**

**SUNDAY EASTBOUND DIRECTION**

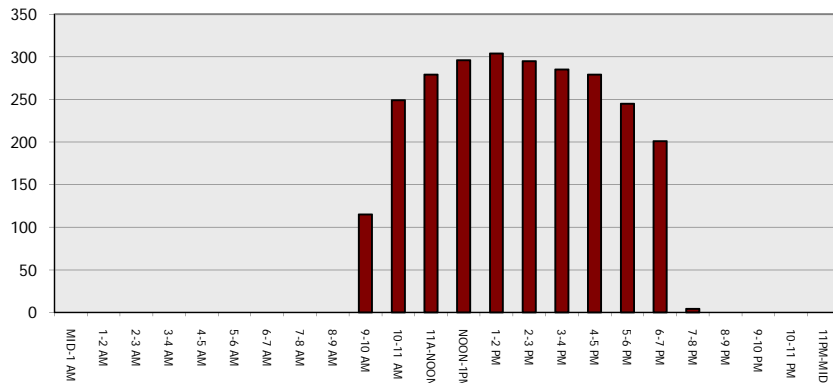
**Main Route - Traffic Demand (Vehicles Per Hour)**



**Main Route Average Delay Per Vehicle (Minutes)**



**Main Route - Average Queue Length (Vehicles)**



**Main Route - Average Speed (MPH)**

