

IH 94: CARMICHAEL RD TO STH 35 S (ST CROIX COUNTY) OFF-PEAK DAY 2 LANE CLOSURE DIVERSION ROUTE: CARMICHAEL RD - STAGELINE RD - USH 12	MAY
	Analyzed for 2009 Construction Season

SUMMARY OF TRAFFIC MODEL OUTPUT

FRIDAY WESTBOUND DIRECTION

TIME OF DAY	FLOWS AND CAPACITY IN VEH/HR								AVERAGE SPEEDS IN MPH						
	MAIN ROUTE		ALTERNATE ROUTE		SITE CAPA CITY	FLOW MAIN ROUTE	FLOW DIVER -TING	TOTAL DIVN FLOW	AV.DEL PER VEH (MINS)	AVERAGE QUEUE (VEH)	MAIN ROUTE		ALTERNATE ROUTE		
	DEMAND FLOW	PCT HEAVY	NORMAL FLOW	PCT HEAVY							WITHOUT WORK ZN	WITH WORK ZN	SITE	WITHOUT WORK ZN	WITH WORK ZN
MID-1 AM	526	0.0	35	0.0	OFF	526	0	35	0.00	0	70.0	70.0	70.0	19.7	19.7
1-2 AM	490	0.0	32	0.0	OFF	490	0	32	0.00	0	70.1	70.1	70.1	19.7	19.7
2-3 AM	476	0.0	31	0.0	OFF	476	0	31	0.00	0	70.1	70.1	70.1	19.7	19.7
3-4 AM	540	0.0	36	0.0	OFF	540	0	36	0.00	0	70.0	70.0	70.0	19.6	19.6
4-5 AM	884	0.0	58	0.0	OFF	884	0	58	0.00	0	69.6	69.6	69.6	19.5	19.5
5-6 AM	1518	0.0	101	0.0	OFF	1518	0	101	0.00	0	68.9	68.9	68.9	19.3	19.3
6-7 AM	2030	0.0	134	0.0	OFF	2030	0	134	0.00	0	68.2	68.2	68.2	19.1	19.1
7-8 AM	2017	0.0	134	0.0	OFF	2017	0	134	0.00	0	68.2	68.2	68.2	19.1	19.1
8-9 AM	1850	0.0	122	0.0	OFF	1850	0	122	0.00	0	68.4	68.4	68.4	19.1	19.1
9-10 AM	1913	0.0	127	0.0	1499	1693	220	346	6.36	146	68.4	11.5	30.8	19.1	18.4
10-11 AM	1985	0.0	132	0.0	1500	1510	475	607	8.67	198	68.2	9.4	30.8	19.1	17.1
11A-NOON	2164	0.0	144	0.0	1500	1525	639	783	9.39	217	68.1	8.9	30.8	19.0	16.1
NOON-1PM	2422	0.0	160	0.0	1500	1541	882	1042	10.68	251	67.8	8.3	30.8	18.9	14.7
1-2 PM	2706	0.0	180	0.0	1500	1553	1153	1333	12.59	302	67.4	7.6	30.8	18.8	13.0
2-3 PM	2791	0.0	185	0.0	1499	1519	1272	1457	13.65	329	67.3	7.2	30.8	18.8	12.3
3-4 PM	2960	0.0	196	0.0	1500	1548	1412	1608+	15.18	370	67.1	6.8	30.8	18.6	11.4
4-5 PM	2992	0.0	198	0.0	OFF	2992	0	198	0.26	25	67.0	54.8	54.8	18.6	18.6
5-6 PM	2864	0.0	189	0.0	OFF	2864	0	189	0.00	0	67.2	67.2	67.2	18.7	18.7
6-7 PM	2495	0.0	166	0.0	OFF	2495	0	166	0.00	0	67.6	67.6	67.6	18.8	18.8
7-8 PM	2070	0.0	137	0.0	OFF	2070	0	137	0.00	0	68.2	68.2	68.2	19.0	19.0
8-9 PM	1885	0.0	125	0.0	OFF	1885	0	125	0.00	0	68.4	68.4	68.4	19.1	19.1
9-10 PM	1602	0.0	106	0.0	OFF	1602	0	106	0.00	0	68.7	68.7	68.7	19.2	19.2
10-11 PM	1282	0.0	85	0.0	OFF	1282	0	85	0.00	0	69.1	69.1	69.1	19.3	19.3
11PM-MID	836	0.0	55	0.0	OFF	836	0	55	0.00	0	69.7	69.7	69.7	19.5	19.5

"OFF" INDICATES NO ROAD WORK (ALL LANES OPEN TO TRAFFIC)

+ INDICATES DIVERSION FLOW EXCEEDS USER-SPECIFIED WARNING LIMIT

----- SITE BREAKDOWN DELAYS -----	
BREAKDOWN DURATION (MINS)	0
RANGE OF QUEUE DELAY - MIN	0.0
(VEH-H) MAX	0.0
RANGE OF DIVN DELAY - MIN	0.0
(VEH-H) MAX	0.0
AV BREAKDOWNS PER DAY	0.00
AV QUEUE DELAY/DAY (VEH-H)	0.0
AV DIVN DELAY/DAY (VEH-H)	0.0
AV TOTAL DELAY/DAY (VEH-H)	0.0

----- SITE ACCIDENT DELAYS -----	
ACCIDENT DURATION (MINS)	0
RANGE OF QUEUE DELAY - MIN	0.0
(VEH-H) MAX	0.0
RANGE OF DIVN DELAY - MIN	0.0
(VEH-H) MAX	0.0
AV ACCIDENTS PER DAY	0.00
AV QUEUE DELAY/DAY (VEH-H)	0.0
AV DIVN DELAY/DAY (VEH-H)	0.0
AV TOTAL DELAY/DAY (VEH-H)	0.0

AVERAGE ACCIDENT NUMBERS (PIA/DAY)	
MAIN ROUTE WITHOUT WORKS	0.0089
MAIN ROUTE WITH WORKS	0.0070
DIVERSION	0.0272

PIA: Personal Injury Accidents

IMPACTS ON ROAD USERS	
ROAD USER COSTS PER DAY (DOLLARS)	\$47,218
CONGESTED HOURS PER DAY*	1

*Delays Exceeding 15 Minutes

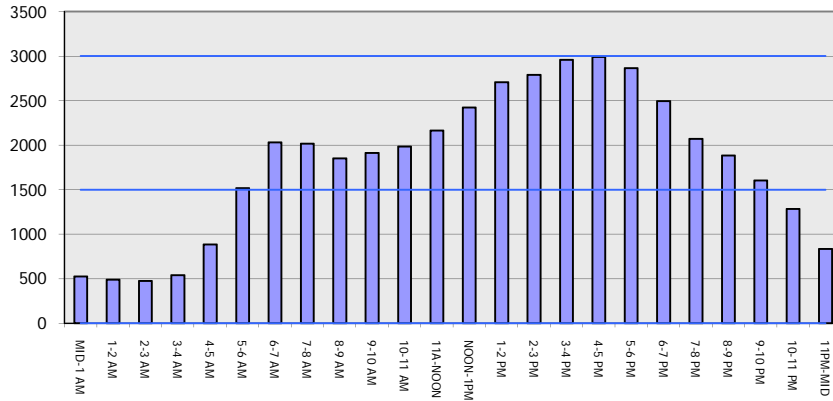
IH 94: CARMICHAEL RD TO STH 35 S (ST CROIX COUNTY)
OFF-PEAK DAY 2 LANE CLOSURE
DIVERSION ROUTE: CARMICHAEL RD - STAGELINE RD - USH 12

MAY
 Analyzed for 2009
 Construction Season

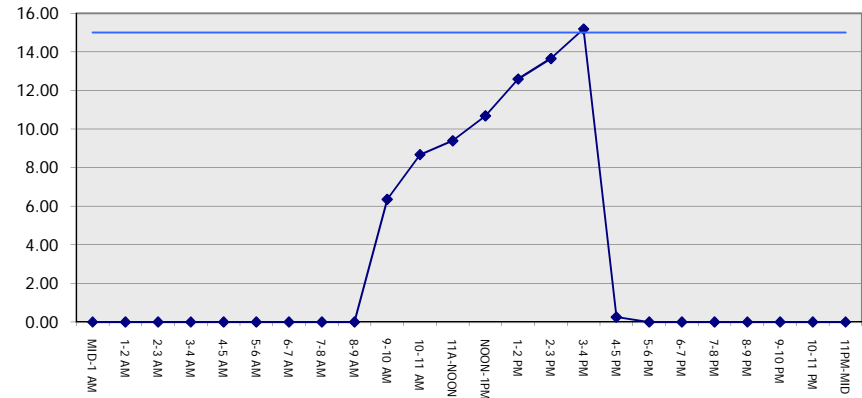
GRAPHICAL REPRESENTATION OF TRAFFIC MODEL INPUT AND OUTPUT

FRIDAY WESTBOUND DIRECTION

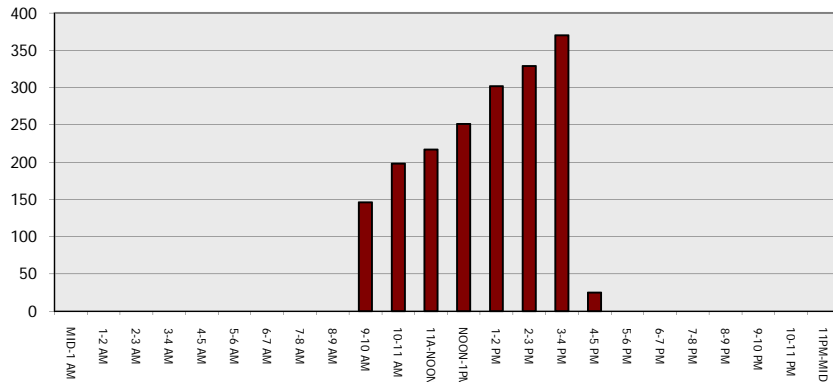
Main Route - Traffic Demand (Vehicles Per Hour)



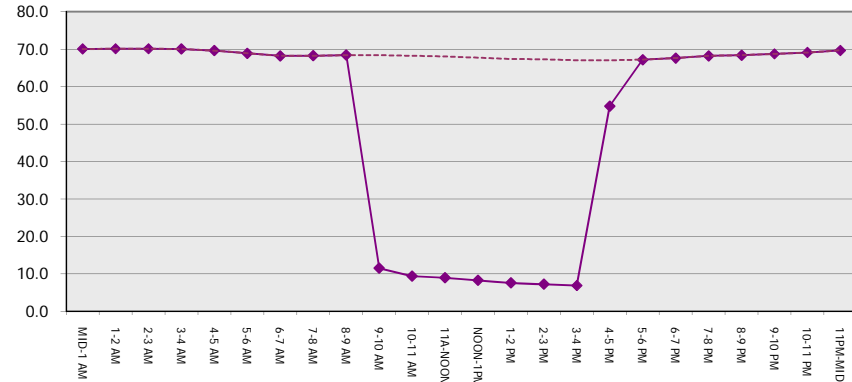
Main Route Average Delay Per Vehicle (Minutes)



Main Route - Average Queue Length (Vehicles)



Main Route - Average Speed (MPH)



IH 94: CARMICHAEL RD TO STH 35 S (ST CROIX COUNTY) OFF-PEAK DAY 2 LANE CLOSURE DIVERSION ROUTE: CARMICHAEL RD - STAGELINE RD - USH 12	MAY
	Analyzed for 2009 Construction Season

SUMMARY OF TRAFFIC MODEL OUTPUT

FRIDAY EASTBOUND DIRECTION

TIME OF DAY	FLOWS AND CAPACITY IN VEH/HR							TOTAL			AVERAGE SPEEDS IN MPH				
	MAIN		DIVERSION		SITE CAPA CITY	FLOW MAIN ROUTE	FLOW DIVER -TING	DIVN FLOW	AV.DEL PER VEH (MINS)	AVERAGE QUEUE (VEH)	MAIN ROUTE		SITE	ALTERNATE ROUTE	
	DEMAND FLOW	PCT HEAVY	NORMAL FLOW	PCT HEAVY							WITHOUT WORK ZN	WITH WORK ZN		WITHOUT WORK ZN	WITH WORK ZN
MID-1 AM	508	0.0	34	0.0	OFF	508	0	34	0.00	0	70.1	70.1	70.1	19.7	19.7
1-2 AM	329	0.0	22	0.0	OFF	329	0	22	0.00	0	70.2	70.2	70.2	19.7	19.7
2-3 AM	322	0.0	22	0.0	OFF	322	0	22	0.00	0	70.2	70.2	70.2	19.7	19.7
3-4 AM	313	0.0	21	0.0	OFF	313	0	21	0.00	0	70.2	70.2	70.2	19.7	19.7
4-5 AM	466	0.0	31	0.0	OFF	466	0	31	0.00	0	70.2	70.2	70.2	19.7	19.7
5-6 AM	723	0.0	48	0.0	OFF	723	0	48	0.00	0	69.9	69.9	69.9	19.6	19.6
6-7 AM	1221	0.0	81	0.0	OFF	1221	0	81	0.00	0	69.2	69.2	69.2	19.4	19.4
7-8 AM	1829	0.0	121	0.0	OFF	1829	0	121	0.00	0	68.4	68.4	68.4	19.1	19.1
8-9 AM	2064	0.0	136	0.0	OFF	2064	0	136	0.00	0	68.2	68.2	68.2	19.0	19.0
9-10 AM	2575	0.0	171	0.0	1499	1810	765	936	10.34	254	67.6	8.6	30.8	18.8	15.3
10-11 AM	2851	0.0	189	0.0	1500	1551	1300	1489	13.95	337	67.2	7.1	30.8	18.7	12.1
11A-NOON	2971	0.0	197	0.0	1499	1535	1436	1633+	15.47	377	67.1	6.8	30.8	18.6	11.3
NOON-1PM	3155	0.0	209	0.0	1499	1503	1653	1861+	16.38	401	66.8	6.6	30.8	18.6	10.9
1-2 PM	3629	0.0	240	0.0	1499	1500	2129	2369+	16.40	402	66.1	6.6	30.8	18.4	10.9
2-3 PM	3657	0.0	242	0.0	1500	1500	2157	2399+	16.40	402	65.9	6.6	30.8	18.4	10.9
3-4 PM	4020	0.0	266	0.0	1500	1500	2520	2786+	16.32	402	63.4	6.6	30.8	18.2	10.9
4-5 PM	4097	0.0	272	0.0	OFF	4097	0	272	0.47	41	62.8	45.5	45.5	18.2	18.2
5-6 PM	3934	0.0	261	0.0	OFF	3934	0	261	0.00	0	64.0	64.0	64.0	18.3	18.3
6-7 PM	3774	0.0	250	0.0	OFF	3774	0	250	0.00	0	65.1	65.1	65.1	18.3	18.3
7-8 PM	2625	0.0	174	0.0	OFF	2625	0	174	0.00	0	67.4	67.4	67.4	18.8	18.8
8-9 PM	1759	0.0	117	0.0	OFF	1759	0	117	0.00	0	68.6	68.6	68.6	19.1	19.1
9-10 PM	1299	0.0	87	0.0	OFF	1299	0	87	0.00	0	69.1	69.1	69.1	19.3	19.3
10-11 PM	1068	0.0	70	0.0	OFF	1068	0	70	0.00	0	69.4	69.4	69.4	19.4	19.4
11PM-MID	802	0.0	53	0.0	OFF	802	0	53	0.00	0	69.7	69.7	69.7	19.6	19.6

"OFF" INDICATES NO ROAD WORK (ALL LANES OPEN TO TRAFFIC)

+ INDICATES DIVERSION FLOW EXCEEDS USER-SPECIFIED WARNING LIMIT

----- SITE BREAKDOWN DELAYS -----	
BREAKDOWN DURATION (MINS)	0
RANGE OF QUEUE DELAY - MIN	0.0
(VEH-H) MAX	0.0
RANGE OF DIVN DELAY - MIN	0.0
(VEH-H) MAX	0.0
AV BREAKDOWNS PER DAY	0.00
AV QUEUE DELAY/DAY (VEH-H)	0.0
AV DIVN DELAY/DAY (VEH-H)	0.0
AV TOTAL DELAY/DAY (VEH-H)	0.0

----- SITE ACCIDENT DELAYS -----	
ACCIDENT DURATION (MINS)	0
RANGE OF QUEUE DELAY - MIN	0.0
(VEH-H) MAX	0.0
RANGE OF DIVN DELAY - MIN	0.0
(VEH-H) MAX	0.0
AV ACCIDENTS PER DAY	0.00
AV QUEUE DELAY/DAY (VEH-H)	0.0
AV DIVN DELAY/DAY (VEH-H)	0.0
AV TOTAL DELAY/DAY (VEH-H)	0.0

AVERAGE ACCIDENT NUMBERS (PIA/DAY)	
MAIN ROUTE WITHOUT WORKS	0.0103
MAIN ROUTE WITH WORKS	0.0071
DIVERSION	0.0466

PIA: Personal Injury Accidents

IMPACTS ON ROAD USERS	
ROAD USER COSTS PER DAY (DOLLARS)	\$85,692
CONGESTED HOURS PER DAY*	5

*Delays Exceeding 15 Minutes

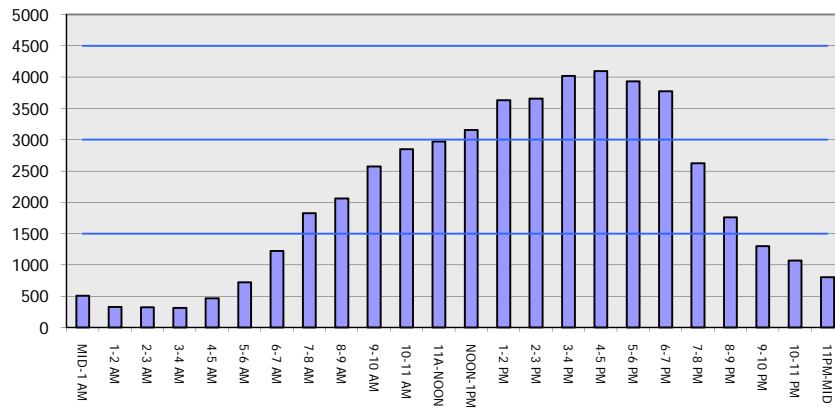
IH 94: CARMICHAEL RD TO STH 35 S (ST CROIX COUNTY)
OFF-PEAK DAY 2 LANE CLOSURE
DIVERSION ROUTE: CARMICHAEL RD - STAGELINE RD - USH 12

MAY
 Analyzed for 2009
 Construction Season

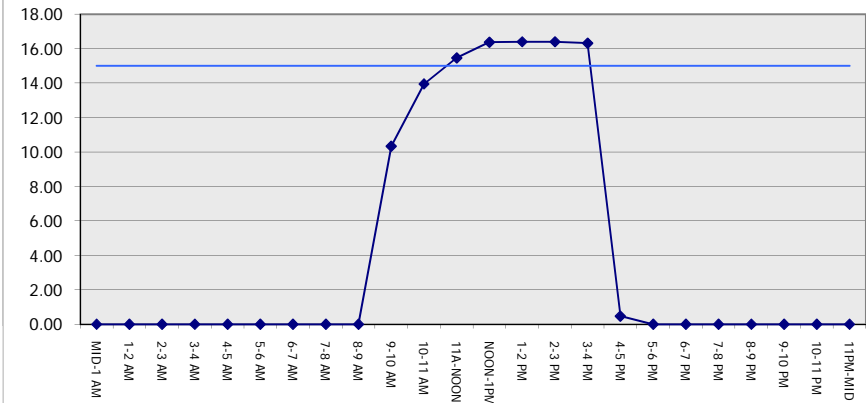
GRAPHICAL REPRESENTATION OF TRAFFIC MODEL INPUT AND OUTPUT

FRIDAY EASTBOUND DIRECTION

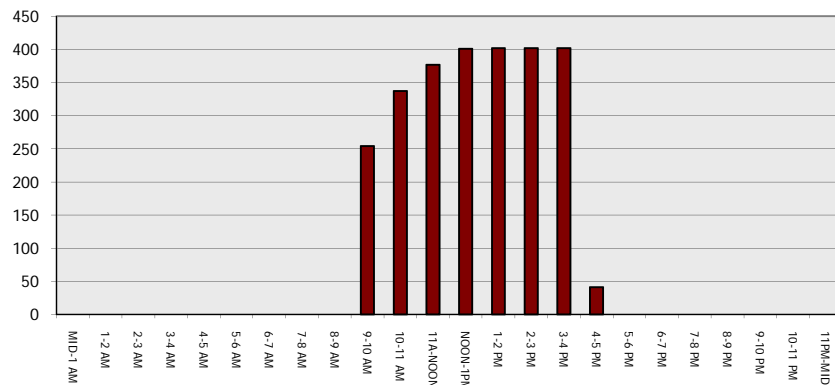
Main Route - Traffic Demand (Vehicles Per Hour)



Main Route Average Delay Per Vehicle (Minutes)



Main Route - Average Queue Length (Vehicles)



Main Route - Average Speed (MPH)

