

IH 94: MN 96 TO STH 35 N OFF-PEAK DAY CLOSURE NO DIVERSION ROUTE (MAX QUEUE METHOD)	OCTOBER
	Analyzed for 2009 Construction Season

SUMMARY OF TRAFFIC MODEL OUTPUT

SUNDAY WESTBOUND DIRECTION

TIME OF DAY	FLOWS AND CAPACITY IN VEH/HR						AVERAGE SPEEDS IN MPH				
	MAIN ROUTE		SITE CAPA CITY	FLOW		AV.DEL PER VEH (MINS)	AVERAGE QUEUE (VEH)	MAIN ROUTE		SITE	
	DEMAND FLOW	PCT HEAVY		MAIN ROUTE	'DIVER TED'			WITHOUT WORK ZONE	WITH WORK ZONE		
MID-1 AM	497	0.0	OFF	497	0	0.00	0	70.1	70.1	70.1	
1-2 AM	379	0.0	OFF	379	0	0.00	0	70.2	70.2	70.2	
2-3 AM	326	0.0	OFF	326	0	0.00	0	70.2	70.2	70.2	
3-4 AM	315	0.0	OFF	315	0	0.00	0	70.2	70.2	70.2	
4-5 AM	316	0.0	OFF	316	0	0.00	0	70.2	70.2	70.2	
5-6 AM	407	0.0	OFF	407	0	0.00	0	70.2	70.2	70.2	
6-7 AM	533	0.0	OFF	533	0	0.00	0	70.0	70.0	70.0	
7-8 AM	757	0.0	OFF	757	0	0.00	0	69.8	69.8	69.8	
8-9 AM	1183	0.0	OFF	1183	0	0.00	0	69.2	69.2	69.2	
9-10 AM	1895	0.0	3000	1895	0	0.17	0	68.4	57.3	49.7	
10-11 AM	2684	0.0	2999	2684	0	0.26	0	67.4	52.2	43.2	
11AM-NOON	3505	0.0	2999	3505	0	3.46	214	66.4	16.1	37.3	
NOON-1PM	3921	0.0	3000	3921	0	16.88	935	64.1	8.3	37.3	
1-2 PM	4503	0.0	3000	4503	0	38.51+	2140	60.1	7.1	37.3	
2-3 PM	5120	0.0	2999	3000	2120	51.07+	2859	55.9	6.9	37.3	
3-4 PM	5705	0.0	2999	2999	2706	50.52+	2859	51.9	6.9	37.3	
4-5 PM	5894	0.0	2999	3000	2894	50.32+	2859	50.6	6.9	37.3	
5-6 PM	5620	0.0	2999	3000	2620	50.61+	2859	52.5	6.9	37.3	
6-7 PM	4940	0.0	2999	2967	1973	51.08+	2851	57.1	6.9	37.3	
7-8 PM	4540	0.0	OFF	4540	0	21.86	2166	59.9	2.6	2.6	
8-9 PM	3705	0.0	OFF	3705	0	4.66	449	65.5	10.7	10.7	
9-10 PM	2664	0.0	OFF	2664	0	0.00	0	67.4	67.4	67.4	
10-11 PM	1764	0.0	OFF	1764	0	0.00	0	68.6	68.6	68.6	
11PM-MID	1039	0.0	OFF	1039	0	0.00	0	69.4	69.4	69.4	

"OFF" INDICATES NO ROAD WORK (ALL LANES OPEN TO TRAFFIC)

+ INDICATES QUEUEING EXCEEDS USER-SPECIFIED MAXIMUM LIMIT

----- SITE BREAKDOWN DELAYS -----	
BREAKDOWN DURATION (MINS)	0
RANGE OF QUEUE DELAY - MIN (VEH-H) MAX	0.0
AV BREAKDOWNS PER DAY	0.00
AV QUEUE DELAY/DAY (VEH-H)	0.0
AV TOTAL DELAY/DAY (VEH-H)	0.0

----- SITE ACCIDENT DELAYS -----	
BREAKDOWN DURATION (MINS)	0
RANGE OF QUEUE DELAY - MIN (VEH-H) MAX	0
AV BREAKDOWNS PER DAY	0
AV QUEUE DELAY/DAY (VEH-H)	0
AV TOTAL DELAY/DAY (VEH-H)	0

AVERAGE ACCIDENT NUMBERS (PIA/DAY)	
MAIN ROUTE WITHOUT WORKS	0.0099
MAIN ROUTE WITH WORKS	0.0045
'DIVERSION'	0.0045
<small>PIA: Personal Injury Accidents</small>	
IMPACTS ON ROAD USERS	
ROAD USER COSTS PER DAY	\$448,201
CONGESTED HOURS PER DAY*	6

*Delays Exceeding User-Specified Maximum

**IH 94: MN 96 TO STH 35 N
OFF-PEAK DAY CLOSURE
NO DIVERSION ROUTE (MAX QUEUE METHOD)**

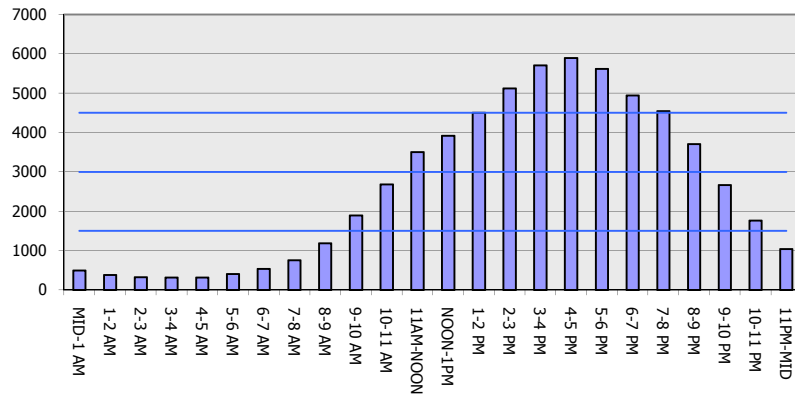
OCTOBER

Analyzed for 2009
Construction Season

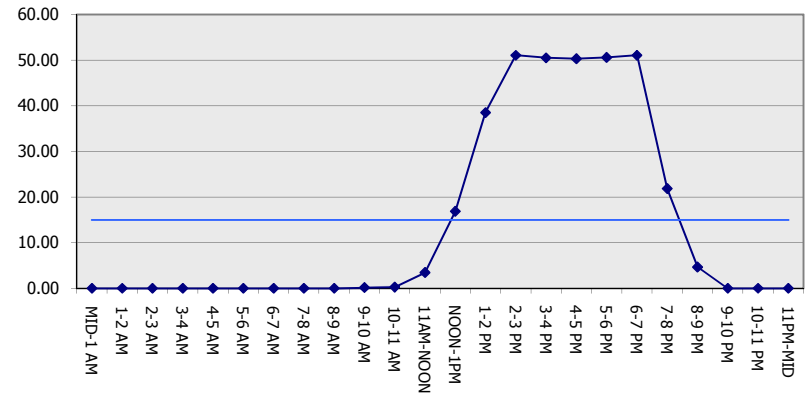
GRAPHICAL REPRESENTATION OF TRAFFIC MODEL INPUT AND OUTPUT

SUNDAY WESTBOUND DIRECTION

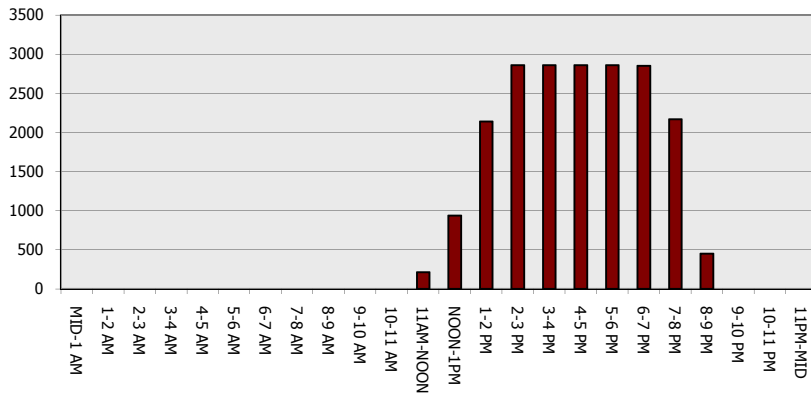
Main Route - Traffic Demand (Vehicles Per Hour)



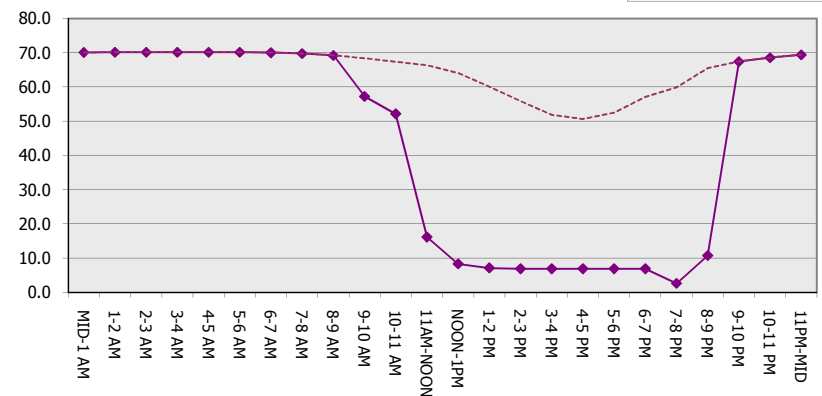
Main Route Average Delay Per Vehicle (Minutes)



Main Route - Average Queue Length (Vehicles)



Main Route - Average Speed (MPH)



IH 94: MN 96 TO STH 35 N OFF-PEAK DAY CLOSURE NO DIVERSION ROUTE (MAX QUEUE METHOD)	OCTOBER
	Analyzed for 2009 Construction Season

SUMMARY OF TRAFFIC MODEL OUTPUT

SUNDAY EASTBOUND DIRECTION

TIME OF DAY	FLOWS AND CAPACITY IN VEH/HR						AVERAGE SPEEDS IN MPH			
	MAIN ROUTE		SITE CAPA CITY	FLOW		AV.DEL PER VEH (MINS)	AVERAGE QUEUE (VEH)	MAIN ROUTE		SITE
	DEMAND FLOW	PCT HEAVY		MAIN ROUTE	'DIVER TED'			WITHOUT WORK ZONE	WITH WORK ZONE	
MID-1 AM	573	0.0	OFF	573	0	0.00	0	70.0	70.0	70.0
1-2 AM	358	0.0	OFF	358	0	0.00	0	70.2	70.2	70.2
2-3 AM	298	0.0	OFF	298	0	0.00	0	70.2	70.2	70.2
3-4 AM	247	0.0	OFF	247	0	0.00	0	70.2	70.2	70.2
4-5 AM	307	0.0	OFF	307	0	0.00	0	70.2	70.2	70.2
5-6 AM	424	0.0	OFF	424	0	0.00	0	70.2	70.2	70.2
6-7 AM	735	0.0	OFF	735	0	0.00	0	69.8	69.8	69.8
7-8 AM	1186	0.0	OFF	1186	0	0.00	0	69.2	69.2	69.2
8-9 AM	1790	0.0	OFF	1790	0	0.00	0	68.5	68.5	68.5
9-10 AM	2749	0.0	2999	2749	0	0.28	0	67.3	51.2	42.0
10-11 AM	3663	0.0	2999	3663	0	4.63	286	65.8	13.8	37.3
11AM-NOON	4182	0.0	3000	4182	0	22.18	1233	62.3	7.8	37.3
NOON-1PM	4306	0.0	3000	3903	403	43.25+	2391	61.4	7.0	37.3
1-2 PM	4365	0.0	3000	2993	1372	49.56+	2742	61.0	6.9	37.3
2-3 PM	4341	0.0	3000	2987	1355	49.44+	2734	61.2	6.9	37.3
3-4 PM	4280	0.0	3000	2972	1308	49.12+	2714	61.6	6.9	37.3
4-5 PM	4179	0.0	3000	2946	1233	48.61+	2682	62.3	7.0	37.3
5-6 PM	3705	0.0	3000	2969	737	47.69+	2614	65.5	7.0	37.3
6-7 PM	2977	0.0	3000	2880	97	46.90+	2564	67.0	7.0	37.3
7-8 PM	2592	0.0	OFF	2592	0	9.31	912	67.5	5.9	5.9
8-9 PM	1757	0.0	OFF	1757	0	0.00	0	68.6	68.6	68.6
9-10 PM	1311	0.0	OFF	1311	0	0.00	0	69.1	69.1	69.1
10-11 PM	986	0.0	OFF	986	0	0.00	0	69.5	69.5	69.5
11PM-MID	648	0.0	OFF	648	0	0.00	0	69.9	69.9	69.9

"OFF" INDICATES NO ROAD WORK (ALL LANES OPEN TO TRAFFIC)

+ INDICATES QUEUEING EXCEEDS USER-SPECIFIED MAXIMUM LIMIT

----- SITE BREAKDOWN DELAYS -----	
BREAKDOWN DURATION (MINS)	0
RANGE OF QUEUE DELAY - MIN (VEH-H) MAX	0.0
AV BREAKDOWNS PER DAY	0.00
AV QUEUE DELAY/DAY (VEH-H)	0.0
AV TOTAL DELAY/DAY (VEH-H)	0.0

----- SITE ACCIDENT DELAYS -----	
BREAKDOWN DURATION (MINS)	0
RANGE OF QUEUE DELAY - MIN (VEH-H) MAX	0
AV BREAKDOWNS PER DAY	0
AV QUEUE DELAY/DAY (VEH-H)	0
AV TOTAL DELAY/DAY (VEH-H)	0

AVERAGE ACCIDENT NUMBERS (PIA/DAY)	
MAIN ROUTE WITHOUT WORKS	0.0083
MAIN ROUTE WITH WORKS	0.0037
'DIVERSION'	0.0024

PIA: Personal Injury Accidents

ECONOMIC IMPACT ON ROAD USERS	
ROAD USER COSTS PER DAY	\$378,933
CONGESTED HOURS PER DAY*	7

*Delays Exceeding User-Specified Maximum

**IH 94: MN 96 TO STH 35 N
OFF-PEAK DAY CLOSURE
NO DIVERSION ROUTE (MAX QUEUE METHOD)**

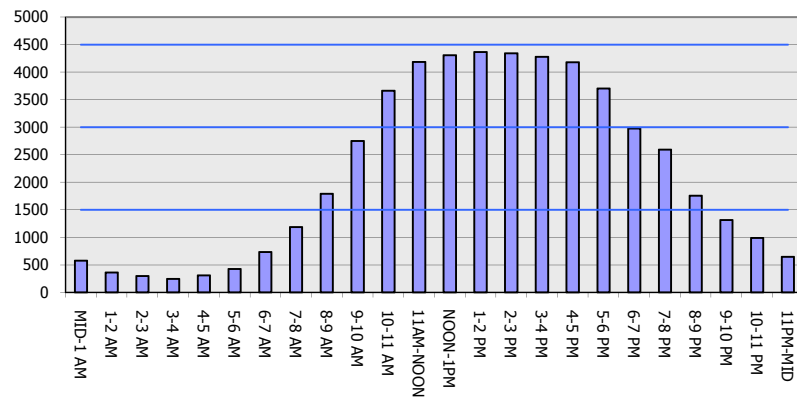
OCTOBER

Analyzed for 2009
Construction Season

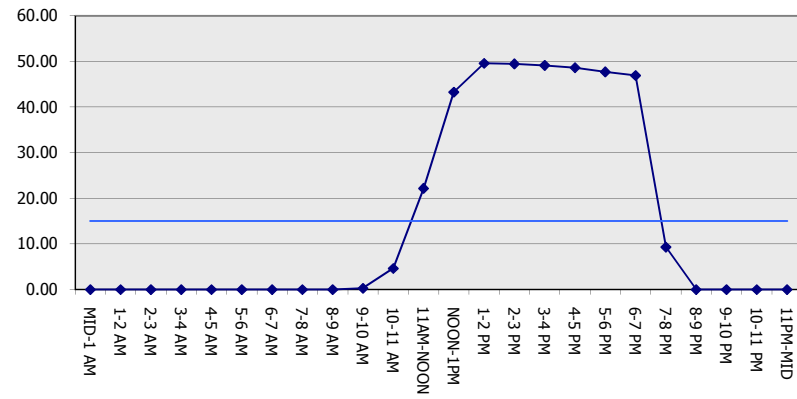
GRAPHICAL REPRESENTATION OF TRAFFIC MODEL INPUT AND OUTPUT

SUNDAY EASTBOUND DIRECTION

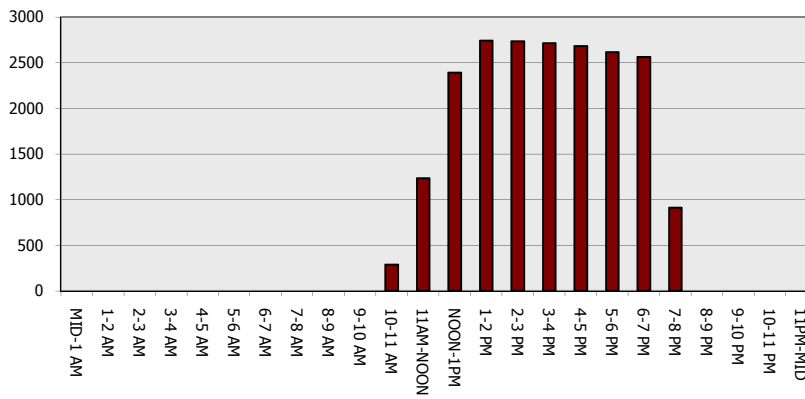
Main Route - Traffic Demand (Vehicles Per Hour)



Main Route Average Delay Per Vehicle (Minutes)



Main Route - Average Queue Length (Vehicles)



Main Route - Average Speed (MPH)

