

IH 94: MN 96 TO STH 35 N OFF-PEAK DAY CLOSURE NO DIVERSION ROUTE (MAX QUEUE METHOD)	AUGUST
	Analyzed for 2009 Construction Season

SUMMARY OF TRAFFIC MODEL OUTPUT

SUNDAY WESTBOUND DIRECTION

TIME OF DAY	FLOWS AND CAPACITY IN VEH/HR						AVERAGE SPEEDS IN MPH			
	MAIN ROUTE		SITE CAPA CITY	FLOW		AV.DEL PER VEH (MINS)	AVERAGE QUEUE (VEH)	MAIN ROUTE		SITE
	DEMAND FLOW	PCT HEAVY		MAIN ROUTE	'DIVER TED'			WITHOUT WORK ZONE	WITH WORK ZONE	
MID-1 AM	639	0.0	OFF	639	0	0.00	0	69.9	69.9	69.9
1-2 AM	450	0.0	OFF	450	0	0.00	0	70.2	70.2	70.2
2-3 AM	346	0.0	OFF	346	0	0.00	0	70.2	70.2	70.2
3-4 AM	343	0.0	OFF	343	0	0.00	0	70.2	70.2	70.2
4-5 AM	353	0.0	OFF	353	0	0.00	0	70.2	70.2	70.2
5-6 AM	411	0.0	OFF	411	0	0.00	0	70.2	70.2	70.2
6-7 AM	548	0.0	OFF	548	0	0.00	0	70.0	70.0	70.0
7-8 AM	879	0.0	OFF	879	0	0.00	0	69.6	69.6	69.6
8-9 AM	1385	0.0	OFF	1385	0	0.00	0	69.0	69.0	69.0
9-10 AM	2060	0.0	2999	2060	0	0.17	0	68.2	57.2	49.7
10-11 AM	3099	0.0	2999	3099	0	0.80	42	66.9	35.4	38.4
11AM-NOON	3993	0.0	3000	3993	0	10.75	620	63.6	9.7	37.3
NOON-1PM	4549	0.0	3000	4549	0	33.95+	1892	59.8	7.3	37.3
1-2 PM	5416	0.0	2999	3008	2408	50.77+	2857	53.8	6.9	37.3
2-3 PM	6280	0.0	2999	3000	3280	49.89+	2859	47.9	6.9	37.3
3-4 PM	6693	0.0	2999	3000	3693	49.36+	2859	45.1	6.9	37.3
4-5 PM	7027	0.0	2999	3000	4027	48.89+	2859	42.8	6.9	37.3
5-6 PM	6587	0.0	2999	3000	3587	49.51+	2859	45.8	6.9	37.3
6-7 PM	5787	0.0	2999	3000	2787	50.43+	2859	51.3	6.9	37.3
7-8 PM	4927	0.0	OFF	4927	0	21.98	2182	57.2	2.6	2.6
8-9 PM	4054	0.0	OFF	4054	0	7.17	696	63.2	7.4	7.4
9-10 PM	2941	0.0	OFF	2941	0	0.00	0	67.1	67.1	67.1
10-11 PM	1965	0.0	OFF	1965	0	0.00	0	68.3	68.3	68.3
11PM-MID	1377	0.0	OFF	1377	0	0.00	0	69.0	69.0	69.0

"OFF" INDICATES NO ROAD WORK (ALL LANES OPEN TO TRAFFIC) **+ INDICATES QUEUEING EXCEEDS USER-SPECIFIED MAXIMUM LIMIT**
WARNING: THE DEMAND FLOW IN ONE OR MORE HOURS EXCEEDS THE THEORETICAL CAPACITY OF THE MAIN ROUTE *WITHOUT* CONSTRUCTION

----- SITE BREAKDOWN DELAYS -----	
BREAKDOWN DURATION (MINS)	0
RANGE OF QUEUE DELAY - MIN (VEH-H) MAX	0.0
AV BREAKDOWNS PER DAY	0.00
AV QUEUE DELAY/DAY (VEH-H)	0.0
AV TOTAL DELAY/DAY (VEH-H)	0.0

----- SITE ACCIDENT DELAYS -----	
BREAKDOWN DURATION (MINS)	0
RANGE OF QUEUE DELAY - MIN (VEH-H) MAX	0
AV BREAKDOWNS PER DAY	0
AV QUEUE DELAY/DAY (VEH-H)	0
AV TOTAL DELAY/DAY (VEH-H)	0

AVERAGE ACCIDENT NUMBERS (PIA/DAY)	
MAIN ROUTE WITHOUT WORKS	0.0115
MAIN ROUTE WITH WORKS	0.0049
'DIVERSION'	0.0073
PIA: Personal Injury Accidents	
IMPACTS ON ROAD USERS	
ROAD USER COSTS PER DAY	\$575,946
CONGESTED HOURS PER DAY*	7

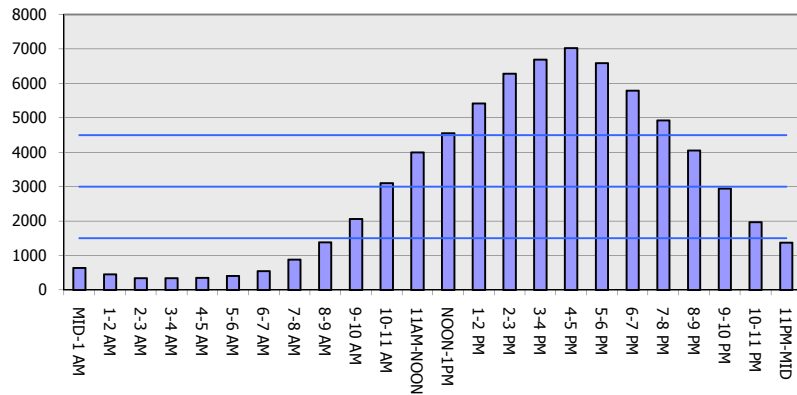
*Delays Exceeding User-Specified Maximum

**IH 94: MN 96 TO STH 35 N
OFF-PEAK DAY CLOSURE
NO DIVERSION ROUTE (MAX QUEUE METHOD)**

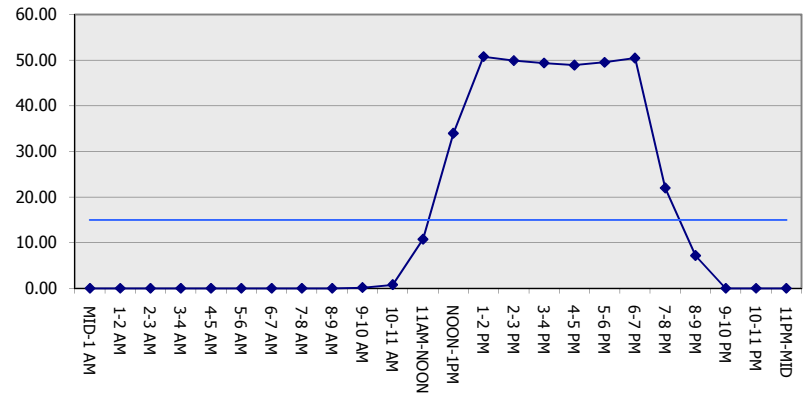
AUGUST
Analyzed for 2009
Construction Season

GRAPHICAL REPRESENTATION OF TRAFFIC MODEL INPUT AND OUTPUT
SUNDAY WESTBOUND DIRECTION

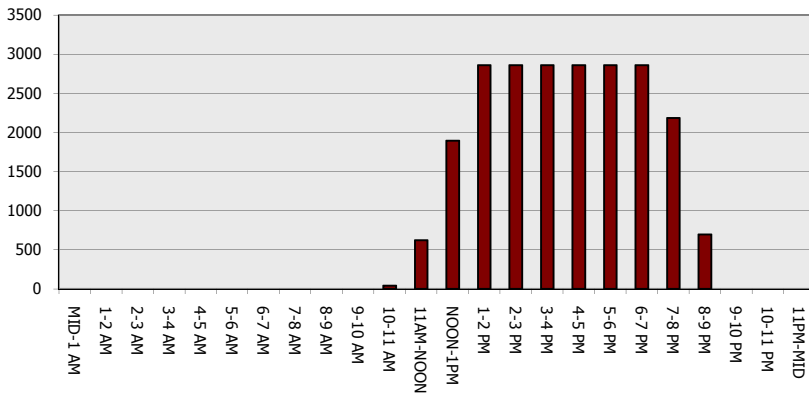
Main Route - Traffic Demand (Vehicles Per Hour)



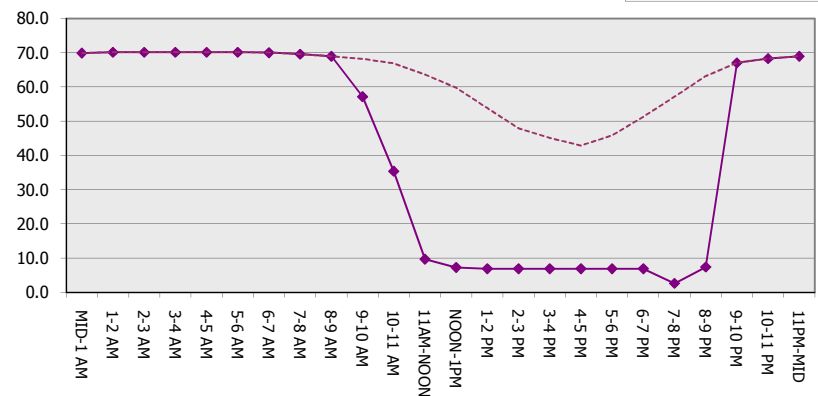
Main Route Average Delay Per Vehicle (Minutes)



Main Route - Average Queue Length (Vehicles)



Main Route - Average Speed (MPH)



IH 94: MN 96 TO STH 35 N OFF-PEAK DAY CLOSURE NO DIVERSION ROUTE (MAX QUEUE METHOD)	AUGUST
	Analyzed for 2009 Construction Season

SUMMARY OF TRAFFIC MODEL OUTPUT

SUNDAY EASTBOUND DIRECTION

TIME OF DAY	FLOWS AND CAPACITY IN VEH/HR						AVERAGE SPEEDS IN MPH			
	MAIN ROUTE		SITE CAPA CITY	FLOW		AV.DEL PER VEH (MINS)	AVERAGE QUEUE (VEH)	MAIN ROUTE		SITE
	DEMAND FLOW	PCT HEAVY		MAIN ROUTE	'DIVER TED'			WITHOUT WORK ZONE	WITH WORK ZONE	
MID-1 AM	622	0.0	OFF	622	0	0.00	0	70.0	70.0	70.0
1-2 AM	409	0.0	OFF	409	0	0.00	0	70.2	70.2	70.2
2-3 AM	309	0.0	OFF	309	0	0.00	0	70.2	70.2	70.2
3-4 AM	263	0.0	OFF	263	0	0.00	0	70.2	70.2	70.2
4-5 AM	279	0.0	OFF	279	0	0.00	0	70.2	70.2	70.2
5-6 AM	437	0.0	OFF	437	0	0.00	0	70.2	70.2	70.2
6-7 AM	920	0.0	OFF	920	0	0.00	0	69.6	69.6	69.6
7-8 AM	1557	0.0	OFF	1557	0	0.00	0	68.8	68.8	68.8
8-9 AM	2300	0.0	OFF	2300	0	0.00	0	67.9	67.9	67.9
9-10 AM	3391	0.0		3391	0	1.94	131	66.5	22.7	37.3
10-11 AM	4358	0.0		4358	0	18.19	1033	61.1	8.3	37.3
11AM-NOON	4561	0.0		4019	541	42.74+	2372	59.7	7.0	37.3
NOON-1PM	5029	0.0		3004	2025	51.13+	2858	56.5	6.9	37.3
1-2 PM	4928	0.0		3001	1927	51.23+	2859	57.2	6.9	37.3
2-3 PM	4498	0.0		3006	1492	50.43+	2795	60.1	6.9	37.3
3-4 PM	4326	0.0		2938	1389	49.72+	2749	61.3	6.9	37.3
4-5 PM	4170	0.0		2923	1247	48.73+	2688	62.3	6.9	37.3
5-6 PM	3651	0.0		2974	676	47.68+	2612	65.9	7.0	37.3
6-7 PM	3273	0.0		2980	293	47.49+	2598	66.7	7.0	37.3
7-8 PM	2759	0.0	OFF	2759	0	10.60	1038	67.3	5.2	5.2
8-9 PM	2306	0.0	OFF	2306	0	0.00	0	67.9	67.9	67.9
9-10 PM	1628	0.0	OFF	1628	0	0.00	0	68.7	68.7	68.7
10-11 PM	1126	0.0	OFF	1126	0	0.00	0	69.3	69.3	69.3
11PM-MID	775	0.0	OFF	775	0	0.00	0	69.7	69.7	69.7

"OFF" INDICATES NO ROAD WORK (ALL LANES OPEN TO TRAFFIC)

+ INDICATES QUEUEING EXCEEDS USER-SPECIFIED MAXIMUM LIMIT

BREAKDOWN DURATION (MINS)	0
RANGE OF QUEUE DELAY - MIN (VEH-H) MAX	0.0
AV BREAKDOWNS PER DAY	0.00
AV QUEUE DELAY/DAY (VEH-H)	0.0
AV TOTAL DELAY/DAY (VEH-H)	0.0

BREAKDOWN DURATION (MINS)	0
RANGE OF QUEUE DELAY - MIN (VEH-H) MAX	0
AV BREAKDOWNS PER DAY	0
AV QUEUE DELAY/DAY (VEH-H)	0
AV TOTAL DELAY/DAY (VEH-H)	0

MAIN ROUTE WITHOUT WORKS	0.0092
MAIN ROUTE WITH WORKS	0.0042
'DIVERSION'	0.0035

PIA: Personal Injury Accidents

ROAD USER COSTS PER DAY	\$465,977
CONGESTED HOURS PER DAY*	8

*Delays Exceeding User-Specified Maximum

**IH 94: MN 96 TO STH 35 N
OFF-PEAK DAY CLOSURE
NO DIVERSION ROUTE (MAX QUEUE METHOD)**

AUGUST
Analyzed for 2009
Construction Season

GRAPHICAL REPRESENTATION OF TRAFFIC MODEL INPUT AND OUTPUT
SUNDAY EASTBOUND DIRECTION

