

IH 94: MN 96 TO STH 35 N OFF-PEAK DAY CLOSURE NO DIVERSION ROUTE (MAX QUEUE METHOD)	AUGUST Analyzed for 2009 Construction Season
--	---

SUMMARY OF TRAFFIC MODEL OUTPUT

SATURDAY WESTBOUND DIRECTION

TIME OF DAY	FLOWS AND CAPACITY IN VEH/HR						AVERAGE SPEEDS IN MPH				
	MAIN ROUTE		SITE CAPA CITY	FLOW		AV.DEL PER VEH (MINS)	AVERAGE QUEUE (VEH)	MAIN ROUTE		SITE	
	DEMAND FLOW	PCT HEAVY		MAIN ROUTE	'DIVER TED'			WITHOUT WORK ZONE	WITH WORK ZONE		
MID-1 AM	888	0.0	OFF	888	0	0.00	0	69.6	69.6	69.6	
1-2 AM	636	0.0	OFF	636	0	0.00	0	69.9	69.9	69.9	
2-3 AM	526	0.0	OFF	526	0	0.00	0	70.0	70.0	70.0	
3-4 AM	563	0.0	OFF	563	0	0.00	0	70.0	70.0	70.0	
4-5 AM	699	0.0	OFF	699	0	0.00	0	69.9	69.9	69.9	
5-6 AM	836	0.0	OFF	836	0	0.00	0	69.7	69.7	69.7	
6-7 AM	954	0.0	OFF	954	0	0.00	0	69.6	69.6	69.6	
7-8 AM	1485	0.0	OFF	1485	0	0.00	0	68.9	68.9	68.9	
8-9 AM	2028	0.0	3000	2028	0	0.17	0	68.2	57.2	49.7	
9-10 AM	2773	0.0	2999	2773	0	0.29	0	67.3	50.8	41.4	
10-11 AM	3580	0.0	2999	3580	0	4.28	259	66.3	14.3	37.3	
11AM-NOON	3749	0.0	3000	3749	0	17.37	952	65.3	8.3	37.3	
NOON-1PM	3633	0.0	2999	3633	0	30.04	1641	66.0	7.4	37.3	
1-2 PM	3883	0.0	2999	3826	57	43.40+	2385	64.3	7.0	37.3	
2-3 PM	3765	0.0	2999	2863	903	48.17+	2643	65.1	7.0	37.3	
3-4 PM	3762	0.0	2999	2981	781	47.68+	2616	65.1	7.0	37.3	
4-5 PM	3560	0.0	2999	2981	579	47.65+	2608	66.3	7.0	37.3	
5-6 PM	3182	0.0	2999	2981	201	47.43+	2594	66.8	7.0	37.3	
6-7 PM	2799	0.0	OFF	2799	0	10.73	1050	67.3	5.2	5.2	
7-8 PM	2365	0.0	OFF	2365	0	0.00	0	67.8	67.8	67.8	
8-9 PM	2071	0.0	OFF	2071	0	0.00	0	68.2	68.2	68.2	
9-10 PM	1859	0.0	OFF	1859	0	0.00	0	68.4	68.4	68.4	
10-11 PM	1391	0.0	OFF	1391	0	0.00	0	69.0	69.0	69.0	
11PM-MID	906	0.0	OFF	906	0	0.00	0	69.6	69.6	69.6	

"OFF" INDICATES NO ROAD WORK (ALL LANES OPEN TO TRAFFIC)

+ INDICATES QUEUEING EXCEEDS USER-SPECIFIED MAXIMUM LIMIT

----- SITE BREAKDOWN DELAYS -----	
BREAKDOWN DURATION (MINS)	0
RANGE OF QUEUE DELAY - MIN (VEH-H) MAX	0.0
AV BREAKDOWNS PER DAY	0.00
AV QUEUE DELAY/DAY (VEH-H)	0.0
AV TOTAL DELAY/DAY (VEH-H)	0.0

----- SITE ACCIDENT DELAYS -----	
BREAKDOWN DURATION (MINS)	0
RANGE OF QUEUE DELAY - MIN (VEH-H) MAX	0
AV BREAKDOWNS PER DAY	0
AV QUEUE DELAY/DAY (VEH-H)	0
AV TOTAL DELAY/DAY (VEH-H)	0

AVERAGE ACCIDENT NUMBERS (PIA/DAY)	
MAIN ROUTE WITHOUT WORKS	0.0083
MAIN ROUTE WITH WORKS	0.0045
'DIVERSION'	0.0009
<small>PIA: Personal Injury Accidents</small>	
IMPACTS ON ROAD USERS	
ROAD USER COSTS PER DAY	\$278,184
CONGESTED HOURS PER DAY*	5

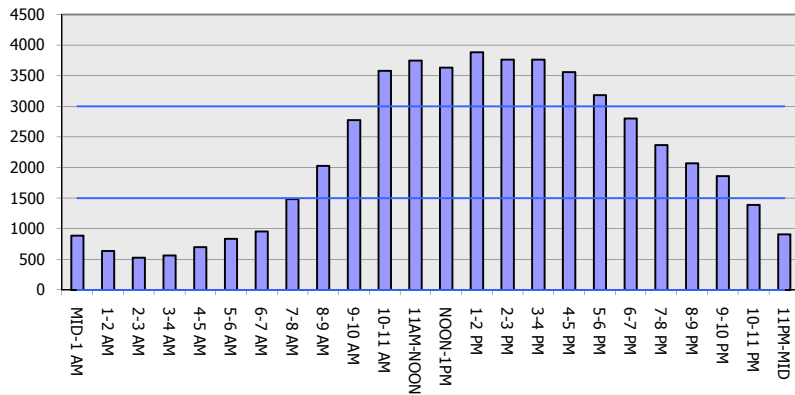
*Delays Exceeding User-Specified Maximum

**IH 94: MN 96 TO STH 35 N
OFF-PEAK DAY CLOSURE
NO DIVERSION ROUTE (MAX QUEUE METHOD)**

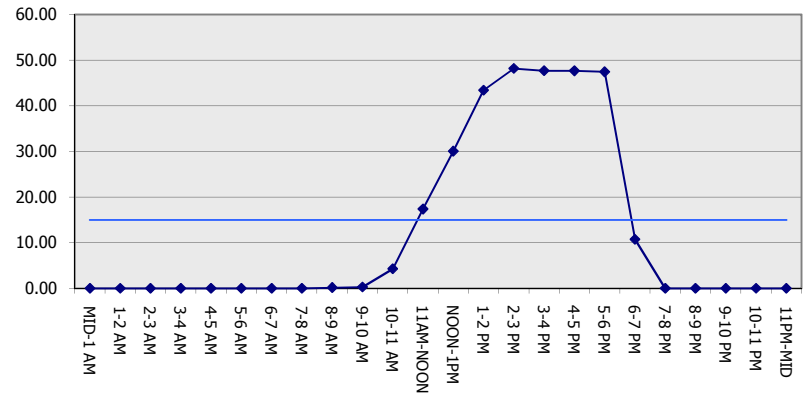
AUGUST
Analyzed for 2009
Construction Season

GRAPHICAL REPRESENTATION OF TRAFFIC MODEL INPUT AND OUTPUT
SATURDAY WESTBOUND DIRECTION

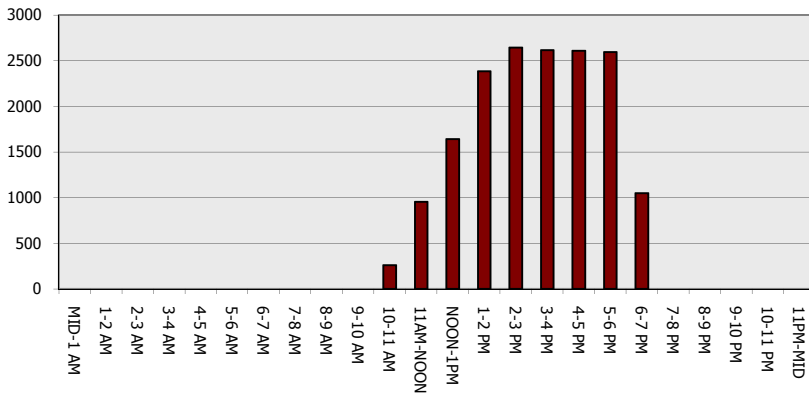
Main Route - Traffic Demand (Vehicles Per Hour)



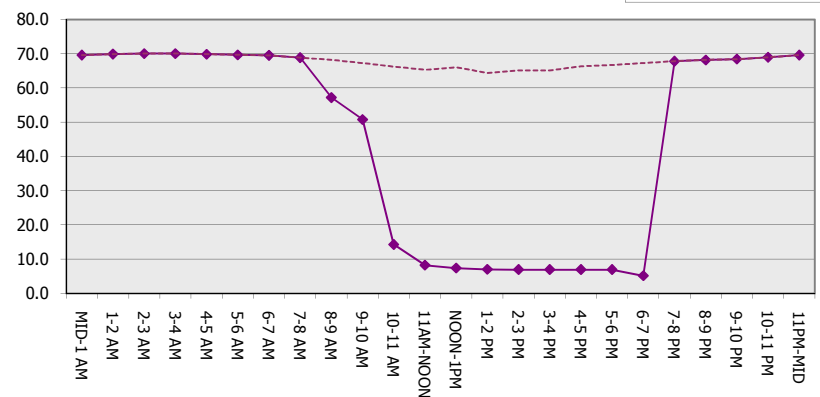
Main Route Average Delay Per Vehicle (Minutes)



Main Route - Average Queue Length (Vehicles)



Main Route - Average Speed (MPH)



IH 94: MN 96 TO STH 35 N OFF-PEAK DAY CLOSURE NO DIVERSION ROUTE (MAX QUEUE METHOD)	AUGUST
	Analyzed for 2009 Construction Season

SUMMARY OF TRAFFIC MODEL OUTPUT

SATURDAY EASTBOUND DIRECTION

TIME OF DAY	FLOWS AND CAPACITY IN VEH/HR						AVERAGE SPEEDS IN MPH			
	MAIN ROUTE		SITE CAPA CITY	FLOW		AV.DEL PER VEH (MINS)	AVERAGE QUEUE (VEH)	MAIN ROUTE		SITE
	DEMAND FLOW	PCT HEAVY		MAIN ROUTE	'DIVER TED'			WITHOUT WORK ZONE	WITH WORK ZONE	
MID-1 AM	914	0.0	OFF	914	0	0.00	0	69.6	69.6	69.6
1-2 AM	542	0.0	OFF	542	0	0.00	0	70.0	70.0	70.0
2-3 AM	447	0.0	OFF	447	0	0.00	0	70.2	70.2	70.2
3-4 AM	406	0.0	OFF	406	0	0.00	0	70.2	70.2	70.2
4-5 AM	506	0.0	OFF	506	0	0.00	0	70.1	70.1	70.1
5-6 AM	757	0.0	OFF	757	0	0.00	0	69.8	69.8	69.8
6-7 AM	1393	0.0	OFF	1393	0	0.00	0	69.0	69.0	69.0
7-8 AM	2358	0.0	OFF	2358	0	0.00	0	67.8	67.8	67.8
8-9 AM	3364	0.0		2999	0	1.94	126	66.6	22.6	37.3
9-10 AM	4145	0.0		3000	0	15.86	895	62.5	8.6	37.3
10-11 AM	4682	0.0		3000	304	40.67+	2265	58.9	7.1	37.3
11AM-NOON	4449	0.0		3000	1568	51.08+	2830	60.5	6.9	37.3
NOON-1PM	4091	0.0		3000	1250	48.81+	2690	62.9	6.9	37.3
1-2 PM	3662	0.0		3000	2992	47.67+	2612	65.8	7.0	37.3
2-3 PM	3446	0.0		3000	2996	47.57+	2603	66.4	7.0	37.3
3-4 PM	3328	0.0		3000	2994	47.51+	2599	66.6	7.0	37.3
4-5 PM	2925	0.0		3000	2922	46.98+	2568	67.1	7.0	37.3
5-6 PM	2791	0.0		3000	2791	44.40+	2425	67.3	7.0	37.3
6-7 PM	2389	0.0	OFF	2389	0	7.49	735	67.8	7.1	7.1
7-8 PM	2079	0.0	OFF	2079	0	0.00	0	68.1	68.1	68.1
8-9 PM	1832	0.0	OFF	1832	0	0.00	0	68.4	68.4	68.4
9-10 PM	1545	0.0	OFF	1545	0	0.00	0	68.8	68.8	68.8
10-11 PM	1225	0.0	OFF	1225	0	0.00	0	69.2	69.2	69.2
11PM-MID	915	0.0	OFF	915	0	0.00	0	69.6	69.6	69.6

"OFF" INDICATES NO ROAD WORK (ALL LANES OPEN TO TRAFFIC)

+ INDICATES QUEUEING EXCEEDS USER-SPECIFIED MAXIMUM LIMIT

----- SITE BREAKDOWN DELAYS -----	
BREAKDOWN DURATION (MINS)	0
RANGE OF QUEUE DELAY - MIN (VEH-H) MAX	0.0
AV BREAKDOWNS PER DAY	0.00
AV QUEUE DELAY/DAY (VEH-H)	0.0
AV TOTAL DELAY/DAY (VEH-H)	0.0

----- SITE ACCIDENT DELAYS -----	
BREAKDOWN DURATION (MINS)	0
RANGE OF QUEUE DELAY - MIN (VEH-H) MAX	0
AV BREAKDOWNS PER DAY	0
AV QUEUE DELAY/DAY (VEH-H)	0
AV TOTAL DELAY/DAY (VEH-H)	0

AVERAGE ACCIDENT NUMBERS (PIA/DAY)	
MAIN ROUTE WITHOUT WORKS	0.0086
MAIN ROUTE WITH WORKS	0.0044
'DIVERSION'	0.0017

PIA: Personal Injury Accidents

ECONOMIC IMPACT ON ROAD USERS	
ROAD USER COSTS PER DAY	\$380,794
CONGESTED HOURS PER DAY*	8

*Delays Exceeding User-Specified Maximum

**IH 94: MN 96 TO STH 35 N
OFF-PEAK DAY CLOSURE
NO DIVERSION ROUTE (MAX QUEUE METHOD)**

AUGUST
Analyzed for 2009
Construction Season

GRAPHICAL REPRESENTATION OF TRAFFIC MODEL INPUT AND OUTPUT
SATURDAY EASTBOUND DIRECTION

