

IH 94: MN 96 TO STH 35 N OFF-PEAK DAY 2 LANE CLOSURE NO DIVERSION ROUTE (MAX QUEUE METHOD)	AUGUST
	Analyzed for 2009 Construction Season

SUMMARY OF TRAFFIC MODEL OUTPUT

FRIDAY WESTBOUND DIRECTION

TIME OF DAY	FLOWS AND CAPACITY IN VEH/HR						AVERAGE SPEEDS IN MPH				
	MAIN ROUTE		SITE CAPA CITY	FLOW		AV.DEL PER VEH (MINS)	AVERAGE QUEUE (VEH)	MAIN ROUTE		SITE	
	DEMAND FLOW	PCT HEAVY		MAIN ROUTE	'DIVER TED'			WITHOUT WORK ZONE	WITH WORK ZONE		
MID-1 AM	800	0.0	OFF	800	0	0.00	0	69.7	69.7	69.7	
1-2 AM	665	0.0	OFF	665	0	0.00	0	69.9	69.9	69.9	
2-3 AM	692	0.0	OFF	692	0	0.00	0	69.9	69.9	69.9	
3-4 AM	805	0.0	OFF	805	0	0.00	0	69.7	69.7	69.7	
4-5 AM	1339	0.0	OFF	1339	0	0.00	0	69.1	69.1	69.1	
5-6 AM	2132	0.0	OFF	2132	0	0.00	0	68.1	68.1	68.1	
6-7 AM	2488	0.0	OFF	2488	0	0.00	0	67.6	67.6	67.6	
7-8 AM	2658	0.0	OFF	2658	0	0.00	0	67.4	67.4	67.4	
8-9 AM	2590	0.0	OFF	2590	0	0.00	0	67.5	67.5	67.5	
9-10 AM	2810	0.0	1499	2728	82	22.00+	630	67.3	5.2	30.8	
10-11 AM	3272	0.0	1500	1509	1763	48.16+	1248	66.7	3.9	30.8	
11AM-NOON	3603	0.0	1500	1500	2103	48.23+	1251	66.3	3.9	30.8	
NOON-1PM	3744	0.0	1500	1500	2244	48.19+	1251	65.3	3.9	30.8	
1-2 PM	4336	0.0	1500	1500	2836	47.98+	1251	61.2	3.9	30.8	
2-3 PM	4613	0.0	1500	1500	3113	47.88+	1251	59.4	3.9	30.8	
3-4 PM	4621	0.0	1500	1500	3120	47.88+	1251	59.3	3.9	30.8	
4-5 PM	4427	0.0	OFF	4427	0	5.03	486	60.6	10.0	10.0	
5-6 PM	4246	0.0	OFF	4246	0	0.00	0	61.9	61.9	61.9	
6-7 PM	3913	0.0	OFF	3913	0	0.00	0	64.1	64.1	64.1	
7-8 PM	3274	0.0	OFF	3274	0	0.00	0	66.7	66.7	66.7	
8-9 PM	2744	0.0	OFF	2744	0	0.00	0	67.3	67.3	67.3	
9-10 PM	2573	0.0	OFF	2573	0	0.00	0	67.6	67.6	67.6	
10-11 PM	1931	0.0	OFF	1931	0	0.00	0	68.3	68.3	68.3	
11PM-MID	1277	0.0	OFF	1277	0	0.00	0	69.1	69.1	69.1	

"OFF" INDICATES NO ROAD WORK (ALL LANES OPEN TO TRAFFIC)

+ INDICATES QUEUEING EXCEEDS USER-SPECIFIED MAXIMUM LIMIT

----- SITE BREAKDOWN DELAYS -----	
BREAKDOWN DURATION (MINS)	0
RANGE OF QUEUE DELAY - MIN (VEH-H) MAX	0.0
AV BREAKDOWNS PER DAY	0.00
AV QUEUE DELAY/DAY (VEH-H)	0.0
AV TOTAL DELAY/DAY (VEH-H)	0.0

----- SITE ACCIDENT DELAYS -----	
BREAKDOWN DURATION (MINS)	0
RANGE OF QUEUE DELAY - MIN (VEH-H) MAX	0
AV BREAKDOWNS PER DAY	0
AV QUEUE DELAY/DAY (VEH-H)	0
AV TOTAL DELAY/DAY (VEH-H)	0

AVERAGE ACCIDENT NUMBERS (PIA/DAY)	
MAIN ROUTE WITHOUT WORKS	0.0104
MAIN ROUTE WITH WORKS	0.0067
'DIVERSION'	0.0056
PIA: Personal Injury Accidents	
IMPACTS ON ROAD USERS	
ROAD USER COSTS PER DAY	\$260,715
CONGESTED HOURS PER DAY*	7

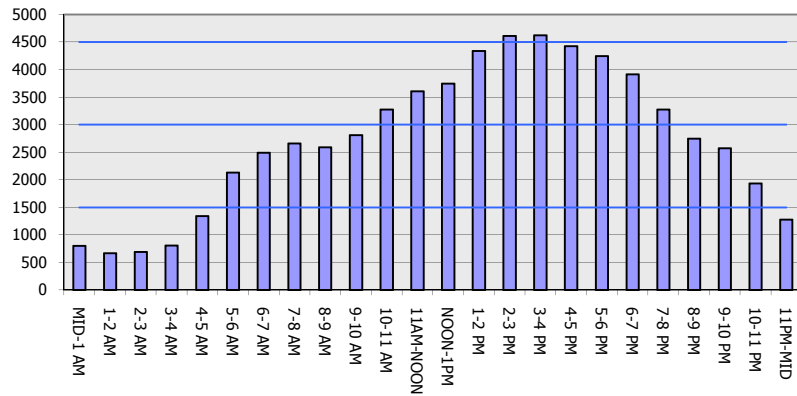
*Delays Exceeding User-Specified Maximum

**IH 94: MN 96 TO STH 35 N
OFF-PEAK DAY 2 LANE CLOSURE
NO DIVERSION ROUTE (MAX QUEUE METHOD)**

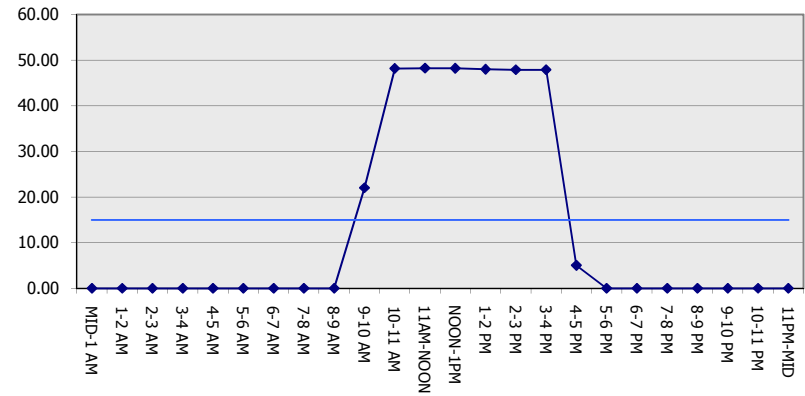
AUGUST
Analyzed for 2009
Construction Season

GRAPHICAL REPRESENTATION OF TRAFFIC MODEL INPUT AND OUTPUT
FRIDAY WESTBOUND DIRECTION

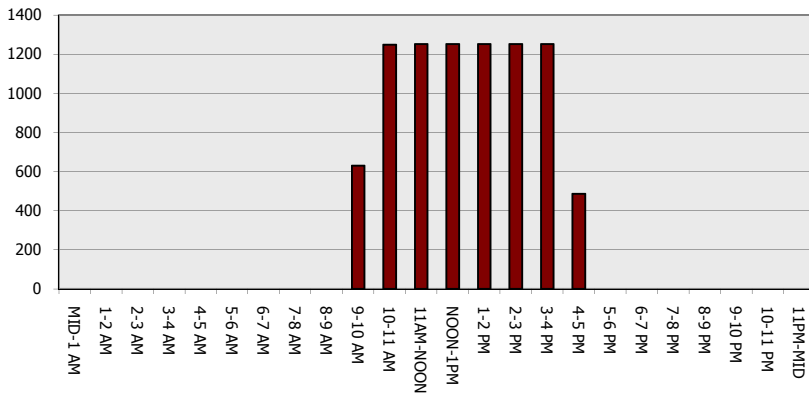
Main Route - Traffic Demand (Vehicles Per Hour)



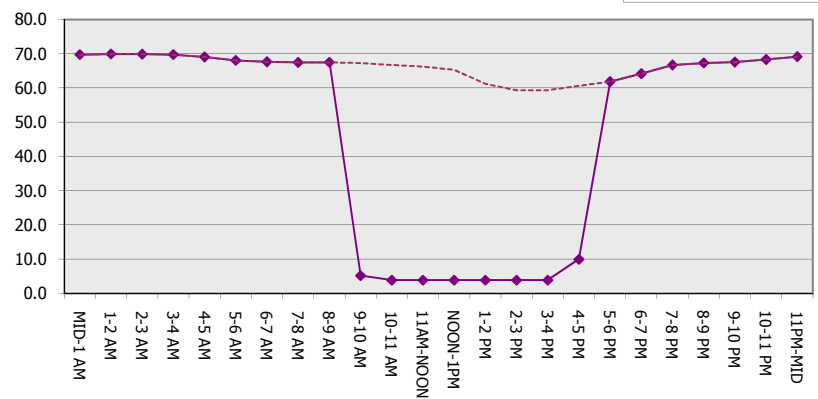
Main Route Average Delay Per Vehicle (Minutes)



Main Route - Average Queue Length (Vehicles)



Main Route - Average Speed (MPH)



IH 94: MN 96 TO STH 35 N OFF-PEAK DAY 2 LANE CLOSURE NO DIVERSION ROUTE (MAX QUEUE METHOD)	AUGUST
	Analyzed for 2009 Construction Season

SUMMARY OF TRAFFIC MODEL OUTPUT

FRIDAY EASTBOUND DIRECTION

TIME OF DAY	FLOWS AND CAPACITY IN VEH/HR							AVERAGE SPEEDS IN MPH		
	MAIN ROUTE		SITE CAPA CITY	FLOW		AV.DEL PER VEH (MINS)	AVERAGE QUEUE (VEH)	MAIN ROUTE		SITE
	DEMAND FLOW	PCT HEAVY		MAIN ROUTE	'DIVER TED'			WITHOUT WORK ZONE	WITH WORK ZONE	
MID-1 AM	899	0.0	OFF	899	0	0.00	0	69.6	69.6	69.6
1-2 AM	584	0.0	OFF	584	0	0.00	0	70.0	70.0	70.0
2-3 AM	512	0.0	OFF	512	0	0.00	0	70.1	70.1	70.1
3-4 AM	511	0.0	OFF	511	0	0.00	0	70.1	70.1	70.1
4-5 AM	644	0.0	OFF	644	0	0.00	0	69.9	69.9	69.9
5-6 AM	1086	0.0	OFF	1086	0	0.00	0	69.4	69.4	69.4
6-7 AM	1812	0.0	OFF	1812	0	0.00	0	68.5	68.5	68.5
7-8 AM	2659	0.0	OFF	2659	0	0.00	0	67.4	67.4	67.4
8-9 AM	3171	0.0	OFF	3171	0	0.00	0	66.8	66.8	66.8
9-10 AM	4051	0.0	1499	2840	1212	33.97+	916	63.2	4.3	30.8
10-11 AM	4982	0.0	1499	1500	3482	47.73+	1251	56.8	3.9	30.8
11AM-NOON	5053	0.0	1499	1500	3553	47.70+	1251	56.3	3.9	30.8
NOON-1PM	5048	0.0	1499	1500	3548	47.70+	1251	56.4	3.9	30.8
1-2 PM	5837	0.0	1499	1500	4337	47.32+	1251	51.0	3.9	30.8
2-3 PM	6056	0.0	1499	1500	4556	47.20+	1251	49.5	3.9	30.8
3-4 PM	5869	0.0	1499	1500	4369	47.31+	1251	50.7	3.9	30.8
4-5 PM	5948	0.0	OFF	5948	0	13.14	1313	50.2	4.2	4.2
5-6 PM	5707	0.0	OFF	5707	0	11.46	1141	51.9	4.8	4.8
6-7 PM	5447	0.0	OFF	5447	0	7.27	718	53.7	7.1	7.1
7-8 PM	3914	0.0	OFF	3914	0	0.51	46	64.1	41.4	41.4
8-9 PM	2759	0.0	OFF	2759	0	0.00	0	67.3	67.3	67.3
9-10 PM	2041	0.0	OFF	2041	0	0.00	0	68.2	68.2	68.2
10-11 PM	1741	0.0	OFF	1741	0	0.00	0	68.6	68.6	68.6
11PM-MID	1313	0.0	OFF	1313	0	0.00	0	69.1	69.1	69.1

"OFF" INDICATES NO ROAD WORK (ALL LANES OPEN TO TRAFFIC)

+ INDICATES QUEUEING EXCEEDS USER-SPECIFIED MAXIMUM LIMIT

----- SITE BREAKDOWN DELAYS -----	
BREAKDOWN DURATION (MINS)	0
RANGE OF QUEUE DELAY - MIN (VEH-H) MAX	0.0
AV BREAKDOWNS PER DAY	0.00
AV QUEUE DELAY/DAY (VEH-H)	0.0
AV TOTAL DELAY/DAY (VEH-H)	0.0

----- SITE ACCIDENT DELAYS -----	
BREAKDOWN DURATION (MINS)	0
RANGE OF QUEUE DELAY - MIN (VEH-H) MAX	0
AV BREAKDOWNS PER DAY	0
AV QUEUE DELAY/DAY (VEH-H)	0
AV TOTAL DELAY/DAY (VEH-H)	0

AVERAGE ACCIDENT NUMBERS (PIA/DAY)	
MAIN ROUTE WITHOUT WORKS	0.0124
MAIN ROUTE WITH WORKS	0.0071
'DIVERSION'	0.0092

PIA: Personal Injury Accidents

ECONOMIC IMPACT ON ROAD USERS	
ROAD USER COSTS PER DAY	\$393,802
CONGESTED HOURS PER DAY*	7

*Delays Exceeding User-Specified Maximum

**IH 94: MN 96 TO STH 35 N
OFF-PEAK DAY 2 LANE CLOSURE
NO DIVERSION ROUTE (MAX QUEUE METHOD)**

AUGUST
Analyzed for 2009
Construction Season

GRAPHICAL REPRESENTATION OF TRAFFIC MODEL INPUT AND OUTPUT
FRIDAY EASTBOUND DIRECTION

