

<b>IH 94: MN 96 TO STH 35 N</b> <b>OFF-PEAK DAY 2 LANE CLOSURE</b> <b>NO DIVERSION ROUTE (MAX QUEUE METHOD)</b>	<b>MAY</b>
	Analyzed for 2009 Construction Season

**SUMMARY OF TRAFFIC MODEL OUTPUT**

FRIDAY WESTBOUND DIRECTION

TIME OF DAY	FLOWS AND CAPACITY IN VEH/HR						AVERAGE SPEEDS IN MPH			
	MAIN ROUTE		SITE CAPA CITY	FLOW		AV.DEL PER VEH (MINS)	AVERAGE QUEUE (VEH)	MAIN ROUTE		SITE
	DEMAND FLOW	PCT HEAVY		MAIN ROUTE	'DIVER TED'			WITHOUT WORK ZONE	WITH WORK ZONE	
MID-1 AM	752	0.0	OFF	752	0	0.00	0	69.8	69.8	69.8
1-2 AM	701	0.0	OFF	701	0	0.00	0	69.9	69.9	69.9
2-3 AM	681	0.0	OFF	681	0	0.00	0	69.9	69.9	69.9
3-4 AM	773	0.0	OFF	773	0	0.00	0	69.8	69.8	69.8
4-5 AM	1264	0.0	OFF	1264	0	0.00	0	69.2	69.2	69.2
5-6 AM	2171	0.0	OFF	2171	0	0.00	0	68.1	68.1	68.1
6-7 AM	2902	0.0	OFF	2902	0	0.00	0	67.1	67.1	67.1
7-8 AM	2883	0.0	OFF	2883	0	0.00	0	67.1	67.1	67.1
8-9 AM	2645	0.0	OFF	2645	0	0.00	0	67.4	67.4	67.4
9-10 AM	2735	0.0	1499	2735	0	21.43+	611	67.3	5.2	30.8
10-11 AM	2838	0.0	1500	1501	1337	47.27+	1224	67.2	3.9	30.8
11AM-NOON	3095	0.0	1500	1523	1572	48.00+	1244	66.9	3.9	30.8
NOON-1PM	3463	0.0	1500	1500	1963	48.24+	1251	66.4	3.9	30.8
1-2 PM	3870	0.0	1500	1500	2370	48.15+	1251	64.4	3.9	30.8
2-3 PM	3990	0.0	1500	1500	2490	48.10+	1251	63.6	3.9	30.8
3-4 PM	4232	0.0	1500	1500	2732	48.02+	1251	61.9	3.9	30.8
4-5 PM	4278	0.0	OFF	4278	0	4.76	459	61.6	10.5	10.5
5-6 PM	4095	0.0	OFF	4095	0	0.00	0	62.9	62.9	62.9
6-7 PM	3567	0.0	OFF	3567	0	0.00	0	66.3	66.3	66.3
7-8 PM	2961	0.0	OFF	2961	0	0.00	0	67.1	67.1	67.1
8-9 PM	2696	0.0	OFF	2696	0	0.00	0	67.4	67.4	67.4
9-10 PM	2291	0.0	OFF	2291	0	0.00	0	67.9	67.9	67.9
10-11 PM	1832	0.0	OFF	1832	0	0.00	0	68.4	68.4	68.4
11PM-MID	1195	0.0	OFF	1195	0	0.00	0	69.2	69.2	69.2

"OFF" INDICATES NO ROAD WORK (ALL LANES OPEN TO TRAFFIC)

+ INDICATES QUEUEING EXCEEDS USER-SPECIFIED MAXIMUM LIMIT

*----- SITE BREAKDOWN DELAYS -----*	
BREAKDOWN DURATION (MINS)	0
RANGE OF QUEUE DELAY - MIN	0.0
(VEH-H) MAX	0.0
AV BREAKDOWNS PER DAY	0.00
AV QUEUE DELAY/DAY (VEH-H)	0.0
AV TOTAL DELAY/DAY (VEH-H)	0.0

*----- SITE ACCIDENT DELAYS -----*	
BREAKDOWN DURATION (MINS)	0
RANGE OF QUEUE DELAY - MIN	0
(VEH-H) MAX	0
AV BREAKDOWNS PER DAY	0
AV QUEUE DELAY/DAY (VEH-H)	0
AV TOTAL DELAY/DAY (VEH-H)	0

AVERAGE ACCIDENT NUMBERS (PIA/DAY)	
MAIN ROUTE WITHOUT WORKS	0.0099
MAIN ROUTE WITH WORKS	0.0066
'DIVERSION'	0.0046
PIA: Personal Injury Accidents	
IMPACTS ON ROAD USERS	
ROAD USER COSTS PER DAY	\$229,839
CONGESTED HOURS PER DAY*	7

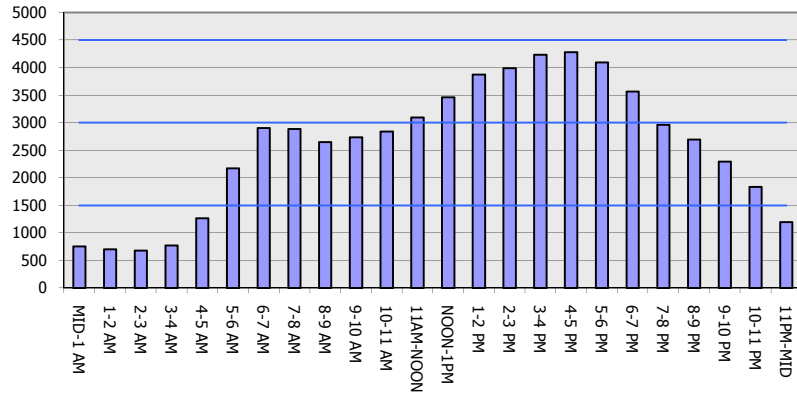
\*Delays Exceeding User-Specified Maximum

**IH 94: MN 96 TO STH 35 N  
OFF-PEAK DAY 2 LANE CLOSURE  
NO DIVERSION ROUTE (MAX QUEUE METHOD)**

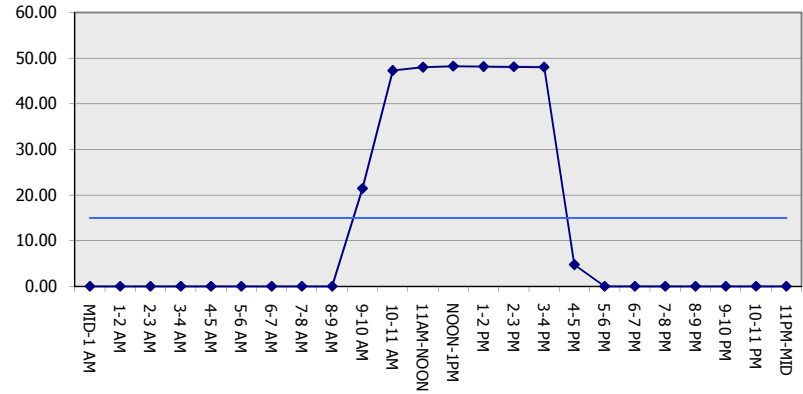
**MAY**  
Analyzed for 2009  
Construction Season

**GRAPHICAL REPRESENTATION OF TRAFFIC MODEL INPUT AND OUTPUT**  
**FRIDAY WESTBOUND DIRECTION**

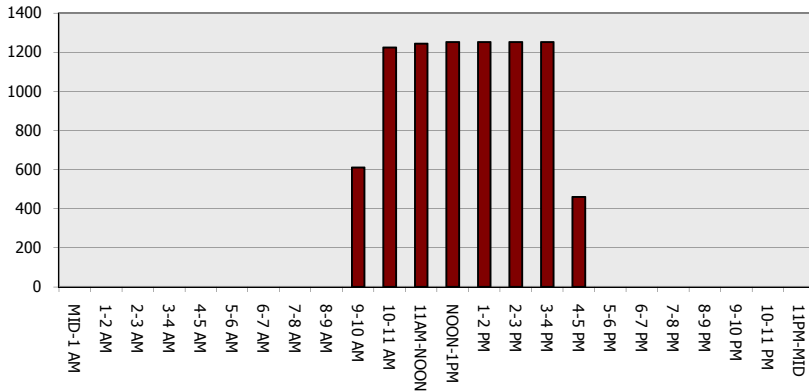
**Main Route - Traffic Demand (Vehicles Per Hour)**



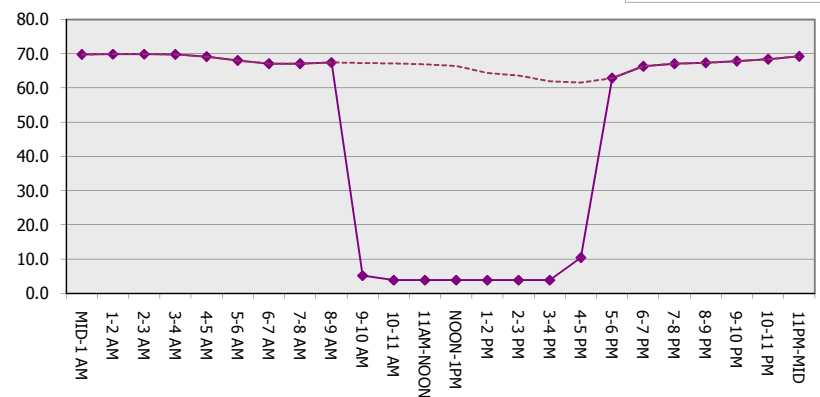
**Main Route Average Delay Per Vehicle (Minutes)**



**Main Route - Average Queue Length (Vehicles)**



**Main Route - Average Speed (MPH)**



<b>IH 94: MN 96 TO STH 35 N OFF-PEAK DAY 2 LANE CLOSURE NO DIVERSION ROUTE (MAX QUEUE METHOD)</b>	<b>MAY</b>
	Analyzed for 2009 Construction Season

**SUMMARY OF TRAFFIC MODEL OUTPUT**

FRIDAY EASTBOUND DIRECTION

TIME OF DAY	FLOWS AND CAPACITY IN VEH/HR						AVERAGE SPEEDS IN MPH			
	MAIN ROUTE		SITE CAPA CITY	FLOW		AV.DEL PER VEH (MINS)	AVERAGE QUEUE (VEH)	MAIN ROUTE		SITE
	DEMAND FLOW	PCT HEAVY		MAIN ROUTE	'DIVER TED'			WITHOUT WORK ZONE	WITH WORK ZONE	
MID-1 AM	726	0.0	OFF	726	0	0.00	0	69.8	69.8	69.8
1-2 AM	472	0.0	OFF	472	0	0.00	0	70.2	70.2	70.2
2-3 AM	461	0.0	OFF	461	0	0.00	0	70.2	70.2	70.2
3-4 AM	448	0.0	OFF	448	0	0.00	0	70.2	70.2	70.2
4-5 AM	667	0.0	OFF	667	0	0.00	0	69.9	69.9	69.9
5-6 AM	1034	0.0	OFF	1034	0	0.00	0	69.4	69.4	69.4
6-7 AM	1745	0.0	OFF	1745	0	0.00	0	68.6	68.6	68.6
7-8 AM	2615	0.0	OFF	2615	0	0.00	0	67.5	67.5	67.5
8-9 AM	2950	0.0	OFF	2950	0	0.00	0	67.1	67.1	67.1
9-10 AM	3681	0.0	1499	2950	731	31.99+	872	65.7	4.5	30.8
10-11 AM	4076	0.0	1499	1500	2576	48.07+	1251	63.0	3.9	30.8
11AM-NOON	4248	0.0	1499	1500	2748	48.01+	1251	61.9	3.9	30.8
NOON-1PM	4511	0.0	1499	1500	3011	47.92+	1251	60.1	3.9	30.8
1-2 PM	5189	0.0	1499	1500	3689	47.64+	1251	55.4	3.9	30.8
2-3 PM	5228	0.0	1499	1500	3728	47.62+	1251	55.1	3.9	30.8
3-4 PM	5748	0.0	1499	1500	4248	47.37+	1251	51.6	3.9	30.8
4-5 PM	5857	0.0	OFF	5857	0	13.81	1378	50.9	4.0	4.0
5-6 PM	5624	0.0	OFF	5624	0	11.25	1119	52.4	4.8	4.8
6-7 PM	5397	0.0	OFF	5397	0	6.39	629	54.0	8.0	8.0
7-8 PM	3753	0.0	OFF	3753	0	0.27	23	65.2	50.4	50.4
8-9 PM	2515	0.0	OFF	2515	0	0.00	0	67.6	67.6	67.6
9-10 PM	1858	0.0	OFF	1858	0	0.00	0	68.4	68.4	68.4
10-11 PM	1526	0.0	OFF	1526	0	0.00	0	68.8	68.8	68.8
11PM-MID	1146	0.0	OFF	1146	0	0.00	0	69.3	69.3	69.3

"OFF" INDICATES NO ROAD WORK (ALL LANES OPEN TO TRAFFIC)

+ INDICATES QUEUEING EXCEEDS USER-SPECIFIED MAXIMUM LIMIT

*----- SITE BREAKDOWN DELAYS -----*	
BREAKDOWN DURATION (MINS)	0
RANGE OF QUEUE DELAY - MIN (VEH-H) MAX	0.0
AV BREAKDOWNS PER DAY	0.00
AV QUEUE DELAY/DAY (VEH-H)	0.0
AV TOTAL DELAY/DAY (VEH-H)	0.0

*----- SITE ACCIDENT DELAYS -----*	
BREAKDOWN DURATION (MINS)	0
RANGE OF QUEUE DELAY - MIN (VEH-H) MAX	0
AV BREAKDOWNS PER DAY	0
AV QUEUE DELAY/DAY (VEH-H)	0
AV TOTAL DELAY/DAY (VEH-H)	0

AVERAGE ACCIDENT NUMBERS (PIA/DAY)	
MAIN ROUTE WITHOUT WORKS	0.0114
MAIN ROUTE WITH WORKS	0.0068
'DIVERSION'	0.0076

PIA: Personal Injury Accidents

ECONOMIC IMPACT ON ROAD USERS	
ROAD USER COSTS PER DAY	\$348,188
CONGESTED HOURS PER DAY*	7

\*Delays Exceeding User-Specified Maximum

**IH 94: MN 96 TO STH 35 N  
OFF-PEAK DAY 2 LANE CLOSURE  
NO DIVERSION ROUTE (MAX QUEUE METHOD)**

**MAY**  
Analyzed for 2009  
Construction Season

**GRAPHICAL REPRESENTATION OF TRAFFIC MODEL INPUT AND OUTPUT**  
**FRIDAY EASTBOUND DIRECTION**

