

IH 94: MN 96 TO STH 35 N OFF-PEAK DAY CLOSURE NO DIVERSION ROUTE (MAX QUEUE METHOD)	MAY
	Analyzed for 2009 Construction Season

SUMMARY OF TRAFFIC MODEL OUTPUT

FRIDAY WESTBOUND DIRECTION

TIME OF DAY	FLOWS AND CAPACITY IN VEH/HR						AVERAGE SPEEDS IN MPH				
	MAIN ROUTE		SITE CAPA CITY	FLOW		AV.DEL PER VEH (MINS)	AVERAGE QUEUE (VEH)	MAIN ROUTE		SITE	
	DEMAND FLOW	PCT HEAVY		MAIN ROUTE	'DIVER TED'			WITHOUT WORK ZONE	WITH WORK ZONE		
MID-1 AM	752	0.0	OFF	752	0	0.00	0	69.8	69.8	69.8	
1-2 AM	701	0.0	OFF	701	0	0.00	0	69.9	69.9	69.9	
2-3 AM	681	0.0	OFF	681	0	0.00	0	69.9	69.9	69.9	
3-4 AM	773	0.0	OFF	773	0	0.00	0	69.8	69.8	69.8	
4-5 AM	1264	0.0	OFF	1264	0	0.00	0	69.2	69.2	69.2	
5-6 AM	2171	0.0	OFF	2171	0	0.00	0	68.1	68.1	68.1	
6-7 AM	2902	0.0	OFF	2902	0	0.00	0	67.1	67.1	67.1	
7-8 AM	2883	0.0	OFF	2883	0	0.00	0	67.1	67.1	67.1	
8-9 AM	2645	0.0	OFF	2645	0	0.00	0	67.4	67.4	67.4	
9-10 AM	2735	0.0	3000	2735	0	0.28	0	67.3	51.2	41.7	
10-11 AM	2838	0.0	2999	2838	0	0.31	0	67.2	49.7	39.9	
11AM-NOON	3095	0.0	2999	3095	0	0.77	27	66.9	36.1	37.3	
NOON-1PM	3463	0.0	3000	3463	0	5.41	301	66.4	12.5	37.3	
1-2 PM	3870	0.0	3000	3870	0	17.69	975	64.4	8.2	37.3	
2-3 PM	3990	0.0	3000	3990	0	34.73+	1911	63.6	7.2	37.3	
3-4 PM	4232	0.0	2999	3304	927	48.54+	2679	61.9	7.0	37.3	
4-5 PM	4278	0.0	OFF	4278	0	18.84	1860	61.6	3.0	3.0	
5-6 PM	4095	0.0	OFF	4095	0	2.74	262	62.9	16.3	16.3	
6-7 PM	3567	0.0	OFF	3567	0	0.00	0	66.3	66.3	66.3	
7-8 PM	2961	0.0	OFF	2961	0	0.00	0	67.1	67.1	67.1	
8-9 PM	2696	0.0	OFF	2696	0	0.00	0	67.4	67.4	67.4	
9-10 PM	2291	0.0	OFF	2291	0	0.00	0	67.9	67.9	67.9	
10-11 PM	1832	0.0	OFF	1832	0	0.00	0	68.4	68.4	68.4	
11PM-MID	1195	0.0	OFF	1195	0	0.00	0	69.2	69.2	69.2	

"OFF" INDICATES NO ROAD WORK (ALL LANES OPEN TO TRAFFIC)

+ INDICATES QUEUEING EXCEEDS USER-SPECIFIED MAXIMUM LIMIT

----- SITE BREAKDOWN DELAYS -----	
BREAKDOWN DURATION (MINS)	0
RANGE OF QUEUE DELAY - MIN (VEH-H) MAX	0.0
AV BREAKDOWNS PER DAY	0.00
AV QUEUE DELAY/DAY (VEH-H)	0.0
AV TOTAL DELAY/DAY (VEH-H)	0.0

----- SITE ACCIDENT DELAYS -----	
BREAKDOWN DURATION (MINS)	0
RANGE OF QUEUE DELAY - MIN (VEH-H) MAX	0
AV BREAKDOWNS PER DAY	0
AV QUEUE DELAY/DAY (VEH-H)	0
AV TOTAL DELAY/DAY (VEH-H)	0

AVERAGE ACCIDENT NUMBERS (PIA/DAY)	
MAIN ROUTE WITHOUT WORKS	0.0099
MAIN ROUTE WITH WORKS	0.0072
'DIVERSION'	0.0003
PIA: Personal Injury Accidents	
IMPACTS ON ROAD USERS	
ROAD USER COSTS PER DAY	\$84,066
CONGESTED HOURS PER DAY*	2

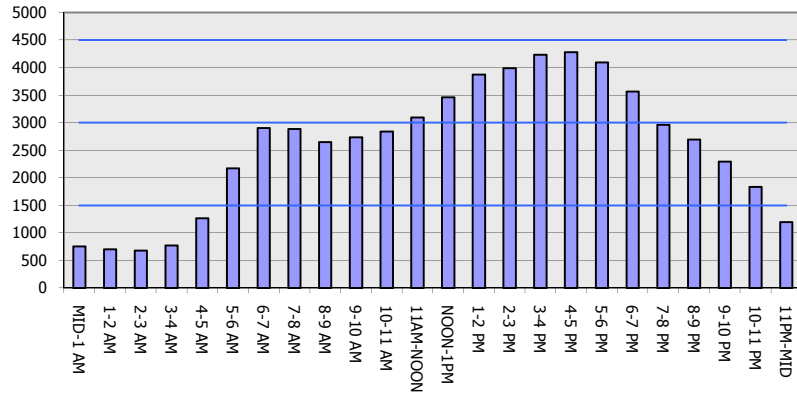
*Delays Exceeding User-Specified Maximum

**IH 94: MN 96 TO STH 35 N
OFF-PEAK DAY CLOSURE
NO DIVERSION ROUTE (MAX QUEUE METHOD)**

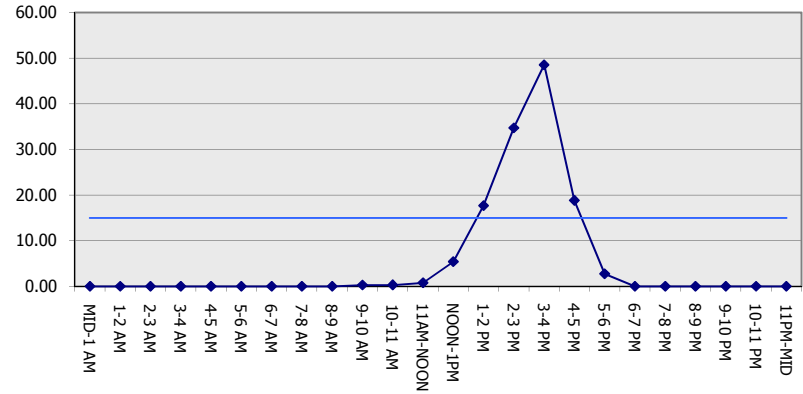
MAY
Analyzed for 2009
Construction Season

GRAPHICAL REPRESENTATION OF TRAFFIC MODEL INPUT AND OUTPUT
FRIDAY WESTBOUND DIRECTION

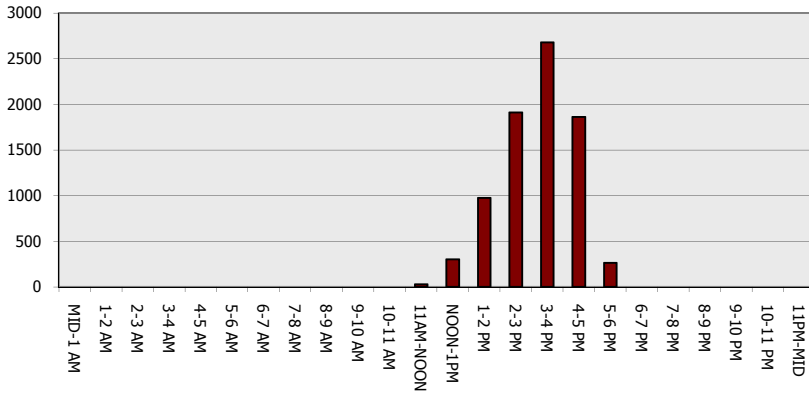
Main Route - Traffic Demand (Vehicles Per Hour)



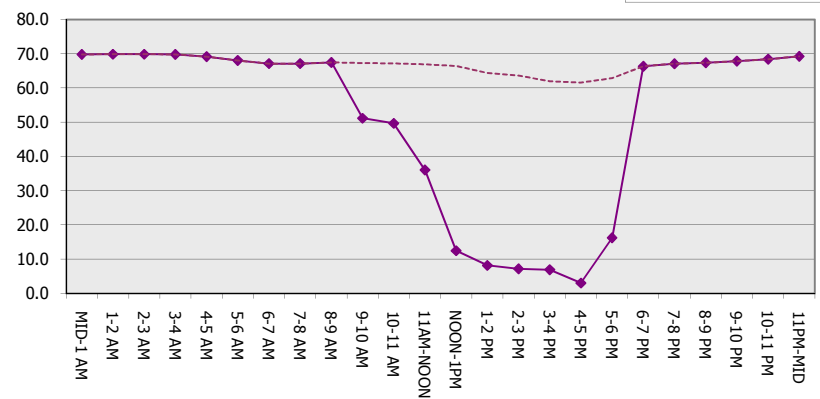
Main Route Average Delay Per Vehicle (Minutes)



Main Route - Average Queue Length (Vehicles)



Main Route - Average Speed (MPH)



IH 94: MN 96 TO STH 35 N OFF-PEAK DAY CLOSURE NO DIVERSION ROUTE (MAX QUEUE METHOD)	MAY
	Analyzed for 2009 Construction Season

SUMMARY OF TRAFFIC MODEL OUTPUT

FRIDAY EASTBOUND DIRECTION

TIME OF DAY	FLOWS AND CAPACITY IN VEH/HR						AVERAGE SPEEDS IN MPH			
	MAIN ROUTE		SITE CAPA CITY	FLOW		AV.DEL PER VEH (MINS)	AVERAGE QUEUE (VEH)	MAIN ROUTE		SITE
	DEMAND FLOW	PCT HEAVY		MAIN ROUTE	'DIVER TED'			WITHOUT WORK ZONE	WITH WORK ZONE	
MID-1 AM	726	0.0	OFF	726	0	0.00	0	69.8	69.8	69.8
1-2 AM	472	0.0	OFF	472	0	0.00	0	70.2	70.2	70.2
2-3 AM	461	0.0	OFF	461	0	0.00	0	70.2	70.2	70.2
3-4 AM	448	0.0	OFF	448	0	0.00	0	70.2	70.2	70.2
4-5 AM	667	0.0	OFF	667	0	0.00	0	69.9	69.9	69.9
5-6 AM	1034	0.0	OFF	1034	0	0.00	0	69.4	69.4	69.4
6-7 AM	1745	0.0	OFF	1745	0	0.00	0	68.6	68.6	68.6
7-8 AM	2615	0.0	OFF	2615	0	0.00	0	67.5	67.5	67.5
8-9 AM	2950	0.0	OFF	2950	0	0.00	0	67.1	67.1	67.1
9-10 AM	3681	0.0	2999	3681	0	5.00	305	65.7	13.4	37.3
10-11 AM	4076	0.0	3000	4076	0	21.68	1201	63.0	7.9	37.3
11AM-NOON	4248	0.0	3000	4088	160	42.11+	2327	61.9	7.0	37.3
NOON-1PM	4511	0.0	3000	2990	1521	50.66+	2809	60.1	6.9	37.3
1-2 PM	5189	0.0	3000	3000	2189	51.01+	2859	55.4	6.9	37.3
2-3 PM	5228	0.0	3000	3000	2228	50.98+	2859	55.1	6.9	37.3
3-4 PM	5748	0.0	3000	3001	2747	50.48+	2859	51.6	6.9	37.3
4-5 PM	5857	0.0	OFF	5857	0	27.66	2764	50.9	2.0	2.0
5-6 PM	5624	0.0	OFF	5624	0	25.11	2504	52.4	2.3	2.3
6-7 PM	5397	0.0	OFF	5397	0	20.24	2015	54.0	2.8	2.8
7-8 PM	3753	0.0	OFF	3753	0	6.73	653	65.2	7.8	7.8
8-9 PM	2515	0.0	OFF	2515	0	0.00	0	67.6	67.6	67.6
9-10 PM	1858	0.0	OFF	1858	0	0.00	0	68.4	68.4	68.4
10-11 PM	1526	0.0	OFF	1526	0	0.00	0	68.8	68.8	68.8
11PM-MID	1146	0.0	OFF	1146	0	0.00	0	69.3	69.3	69.3

"OFF" INDICATES NO ROAD WORK (ALL LANES OPEN TO TRAFFIC)

+ INDICATES QUEUEING EXCEEDS USER-SPECIFIED MAXIMUM LIMIT

----- SITE BREAKDOWN DELAYS -----	
BREAKDOWN DURATION (MINS)	0
RANGE OF QUEUE DELAY - MIN (VEH-H) MAX	0.0
AV BREAKDOWNS PER DAY	0.00
AV QUEUE DELAY/DAY (VEH-H)	0.0
AV TOTAL DELAY/DAY (VEH-H)	0.0

----- SITE ACCIDENT DELAYS -----	
BREAKDOWN DURATION (MINS)	0
RANGE OF QUEUE DELAY - MIN (VEH-H) MAX	0
AV BREAKDOWNS PER DAY	0
AV QUEUE DELAY/DAY (VEH-H)	0
AV TOTAL DELAY/DAY (VEH-H)	0

AVERAGE ACCIDENT NUMBERS (PIA/DAY)	
MAIN ROUTE WITHOUT WORKS	0.0114
MAIN ROUTE WITH WORKS	0.0074
'DIVERSION'	0.0033

PIA: Personal Injury Accidents

ECONOMIC IMPACT ON ROAD USERS	
ROAD USER COSTS PER DAY	\$282,848
CONGESTED HOURS PER DAY*	5

*Delays Exceeding User-Specified Maximum

**IH 94: MN 96 TO STH 35 N
OFF-PEAK DAY CLOSURE
NO DIVERSION ROUTE (MAX QUEUE METHOD)**

MAY
Analyzed for 2009
Construction Season

GRAPHICAL REPRESENTATION OF TRAFFIC MODEL INPUT AND OUTPUT
FRIDAY EASTBOUND DIRECTION

