

IH 94: STH 65 TO USH 12/STH 29 (DUNN AND ST CROIX COUNTIES) OFF-PEAK DAY CLOSURE DIVERSION ROUTE: STH 128 - USH 12 - USH 63	MAY
	Analyzed for 2009 Construction Season

SUMMARY OF TRAFFIC MODEL OUTPUT

FRIDAY WESTBOUND DIRECTION

TIME OF DAY	FLOWS AND CAPACITY IN VEH/HR						AVERAGE SPEEDS IN MPH								
	MAIN ROUTE		ALTERNATE ROUTE		SITE CAPA CITY	FLOW MAIN ROUTE	FLOW DIVER -TING	TOTAL DIVN FLOW	AV.DEL PER VEH (MINS)	AVERAGE QUEUE (VEH)	MAIN ROUTE		ALTERNATE ROUTE		
	DEMAND FLOW	PCT HEAVY	NORMAL FLOW	PCT HEAVY							WITHOUT WORK ZN	WITH WORK ZN	SITE	WITHOUT WORK ZN	WITH WORK ZN
MID-1 AM	255	0.0	24	0.0	OFF	255	0	24	0.00	0	65.9	65.9	65.9	39.4	39.4
1-2 AM	238	0.0	23	0.0	OFF	238	0	23	0.00	0	66.0	66.0	66.0	39.4	39.4
2-3 AM	231	0.0	22	0.0	OFF	231	0	22	0.00	0	66.0	66.0	66.0	39.5	39.5
3-4 AM	262	0.0	25	0.0	OFF	262	0	25	0.00	0	65.9	65.9	65.9	39.4	39.4
4-5 AM	428	0.0	42	0.0	OFF	428	0	42	0.00	0	65.6	65.6	65.6	39.2	39.2
5-6 AM	736	0.0	71	0.0	OFF	736	0	71	0.00	0	65.0	65.0	65.0	38.9	38.9
6-7 AM	983	0.0	94	0.0	OFF	983	0	94	0.00	0	64.6	64.6	64.6	38.6	38.6
7-8 AM	977	0.0	94	0.0	OFF	977	0	94	0.00	0	64.6	64.6	64.6	38.6	38.6
8-9 AM	897	0.0	86	0.0	OFF	897	0	86	0.00	0	64.7	64.7	64.7	38.7	38.7
9-10 AM	926	0.0	89	0.0	1500	926	0	89	0.51	0	64.6	60.9	41.9	38.6	38.6
10-11 AM	961	0.0	92	0.0	1500	961	0	92	0.52	0	64.6	60.7	41.8	38.6	38.6
11A-NOON	1049	0.0	100	0.0	1500	1049	0	100	0.52	0	64.5	60.5	41.5	38.5	38.5
NOON-1PM	1173	0.0	113	0.0	1500	1173	0	113	0.60	0	64.2	59.8	39.3	38.3	38.3
1-2 PM	1311	0.0	126	0.0	1500	1311	0	126	0.78	0	64.0	58.4	35.2	38.2	38.2
2-3 PM	1353	0.0	130	0.0	1500	1353	0	130	0.83	0	63.8	58.0	34.2	38.1	38.1
3-4 PM	1434	0.0	138	0.0	1500	1434	0	138	0.94	0	63.7	57.2	32.2	38.0	38.0
4-5 PM	1449	0.0	139	0.0	OFF	1449	0	139	0.00	0	63.7	63.7	63.7	38.0	38.0
5-6 PM	1388	0.0	134	0.0	OFF	1388	0	134	0.00	0	63.8	63.8	63.8	38.1	38.1
6-7 PM	1208	0.0	117	0.0	OFF	1208	0	117	0.00	0	64.1	64.1	64.1	38.3	38.3
7-8 PM	1004	0.0	96	0.0	OFF	1004	0	96	0.00	0	64.5	64.5	64.5	38.6	38.6
8-9 PM	913	0.0	88	0.0	OFF	913	0	88	0.00	0	64.7	64.7	64.7	38.6	38.6
9-10 PM	776	0.0	75	0.0	OFF	776	0	75	0.00	0	65.0	65.0	65.0	38.8	38.8
10-11 PM	621	0.0	60	0.0	OFF	621	0	60	0.00	0	65.2	65.2	65.2	39.0	39.0
11PM-MID	405	0.0	39	0.0	OFF	405	0	39	0.00	0	65.6	65.6	65.6	39.2	39.2

"OFF" INDICATES NO ROAD WORK (ALL LANES OPEN TO TRAFFIC)

----- SITE BREAKDOWN DELAYS -----	
BREAKDOWN DURATION (MINS)	0
RANGE OF QUEUE DELAY - MIN	0.0
(VEH-H) MAX	0.0
RANGE OF DIVN DELAY - MIN	0.0
(VEH-H) MAX	0.0
AV BREAKDOWNS PER DAY	0.00
AV QUEUE DELAY/DAY (VEH-H)	0.0
AV DIVN DELAY/DAY (VEH-H)	0.0
AV TOTAL DELAY/DAY (VEH-H)	0.0

----- SITE ACCIDENT DELAYS -----	
ACCIDENT DURATION (MINS)	0
RANGE OF QUEUE DELAY - MIN	0.0
(VEH-H) MAX	0.0
RANGE OF DIVN DELAY - MIN	0.0
(VEH-H) MAX	0.0
AV ACCIDENTS PER DAY	0.00
AV QUEUE DELAY/DAY (VEH-H)	0.0
AV DIVN DELAY/DAY (VEH-H)	0.0
AV TOTAL DELAY/DAY (VEH-H)	0.0

AVERAGE ACCIDENT NUMBERS (PIA/DAY)	
MAIN ROUTE WITHOUT WORKS	0.0294
MAIN ROUTE WITH WORKS	0.0288
DIVERSION	0.0301

PIA: Personal Injury Accidents

IMPACTS ON ROAD USERS	
ROAD USER COSTS PER DAY (DOLLARS)	\$1,213
CONGESTED HOURS PER DAY*	0

*Delays Exceeding 15 Minutes

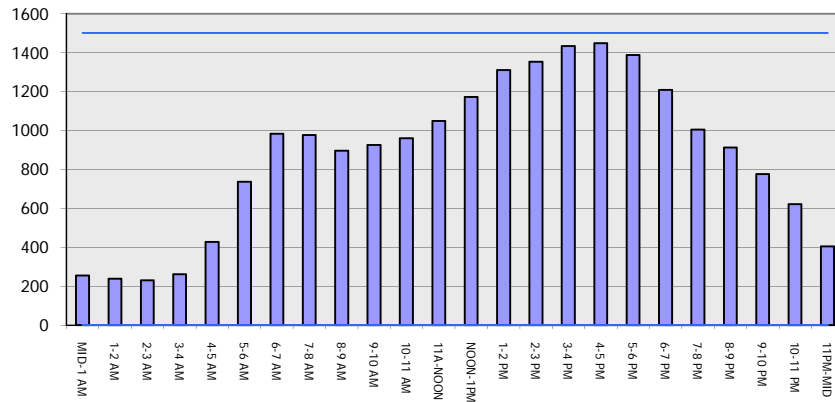
IH 94: STH 65 TO USH 12/STH 29 (DUNN AND ST CROIX COUNTIES)
OFF-PEAK DAY CLOSURE
DIVERSION ROUTE: STH 128 - USH 12 - USH 63

MAY
 Analyzed for 2009
 Construction Season

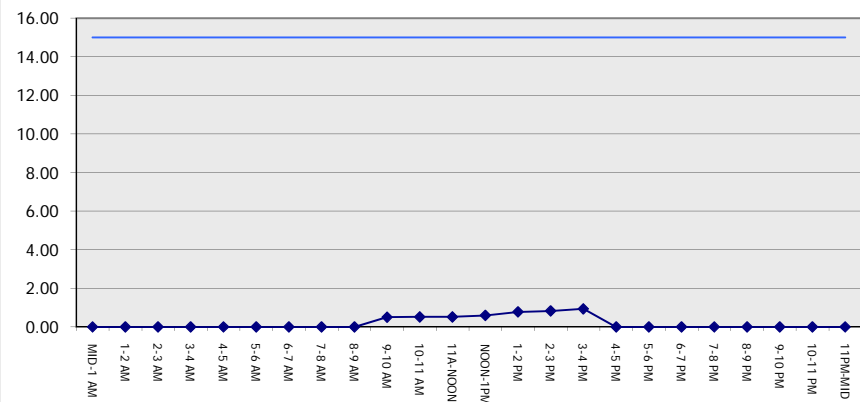
GRAPHICAL REPRESENTATION OF TRAFFIC MODEL INPUT AND OUTPUT

FRIDAY WESTBOUND DIRECTION

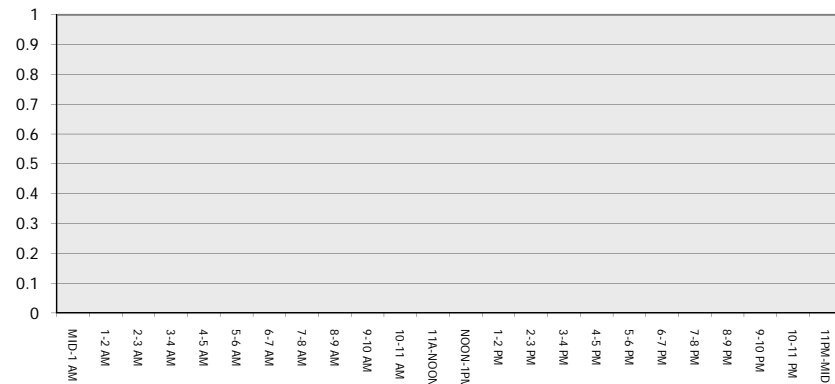
Main Route - Traffic Demand (Vehicles Per Hour)



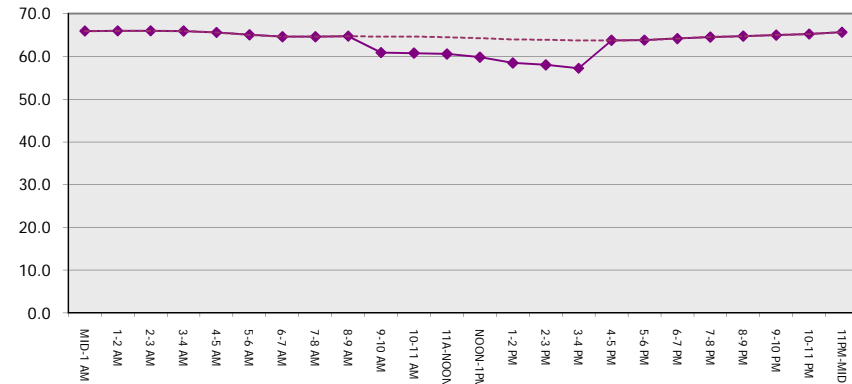
Main Route Average Delay Per Vehicle (Minutes)



Main Route - Average Queue Length (Vehicles)



Main Route - Average Speed (MPH)



IH 94: STH 65 TO USH 12/STH 29 (DUNN AND ST CROIX COUNTIES) OFF-PEAK DAY CLOSURE DIVERSION ROUTE: STH 128 - USH 12 - USH 63	MAY
	Analyzed for 2009 Construction Season

SUMMARY OF TRAFFIC MODEL OUTPUT

FRIDAY EASTBOUND DIRECTION

TIME OF DAY	FLOWS AND CAPACITY IN VEH/HR								AVERAGE SPEEDS IN MPH						
	MAIN		DIVERSION		SITE CAPA CITY	FLOW MAIN ROUTE	FLOW DIVER -TING	TOTAL DIVN FLOW	AV.DEL PER VEH (MINS)	AVERAGE QUEUE (VEH)	MAIN ROUTE		SITE	ALTERNATE ROUTE	
	DEMAND FLOW	PCT HEAVY	NORMAL FLOW	PCT HEAVY							WITHOUT WORK ZN	WITH WORK ZN		WITHOUT WORK ZN	WITH WORK ZN
MID-1 AM	246	0.0	23	0.0	OFF	246	0	23	0.00	0	66.0	66.0	66.0	39.4	39.4
1-2 AM	160	0.0	15	0.0	OFF	160	0	15	0.00	0	66.1	66.1	66.1	39.6	39.6
2-3 AM	156	0.0	15	0.0	OFF	156	0	15	0.00	0	66.1	66.1	66.1	39.6	39.6
3-4 AM	152	0.0	14	0.0	OFF	152	0	14	0.00	0	66.1	66.1	66.1	39.6	39.6
4-5 AM	226	0.0	21	0.0	OFF	226	0	21	0.00	0	66.0	66.0	66.0	39.5	39.5
5-6 AM	350	0.0	33	0.0	OFF	350	0	33	0.00	0	65.8	65.8	65.8	39.3	39.3
6-7 AM	592	0.0	57	0.0	OFF	592	0	57	0.00	0	65.3	65.3	65.3	39.1	39.1
7-8 AM	886	0.0	85	0.0	OFF	886	0	85	0.00	0	64.7	64.7	64.7	38.7	38.7
8-9 AM	999	0.0	96	0.0	OFF	999	0	96	0.00	0	64.5	64.5	64.5	38.6	38.6
9-10 AM	1248	0.0	120	0.0	1500	1248	0	120	0.70	0	64.1	59.1	37.0	38.3	38.3
10-11 AM	1381	0.0	133	0.0	1500	1381	0	133	0.87	0	63.8	57.8	33.4	38.1	38.1
11A-NOON	1439	0.0	138	0.0	1499	1439	0	138	0.95	0	63.7	57.2	32.1	38.0	38.0
NOON-1PM	1529	0.0	147	0.0	1499	1529	0	147	1.32	8	63.5	54.8	30.9	37.9	37.9
1-2 PM	1758	0.0	169	0.0	1500	1758	0	169	6.34	155	63.1	35.9	30.8	37.6	37.6
2-3 PM	1772	0.0	171	0.0	1499	1561	211	381	13.39	335	63.1	24.3	30.8	37.6	35.0
3-4 PM	1948	0.0	188	0.0	1500	1546	402	589	15.08	382	62.8	22.5	30.8	37.4	32.4
4-5 PM	1985	0.0	191	0.0	OFF	1985	0	191	0.69	39	62.7	57.9	57.9	37.4	37.4
5-6 PM	1905	0.0	184	0.0	OFF	1905	0	184	0.00	0	62.8	62.8	62.8	37.4	37.4
6-7 PM	1828	0.0	176	0.0	OFF	1828	0	176	0.00	0	63.0	63.0	63.0	37.6	37.6
7-8 PM	1271	0.0	123	0.0	OFF	1271	0	123	0.00	0	64.0	64.0	64.0	38.2	38.2
8-9 PM	852	0.0	82	0.0	OFF	852	0	82	0.00	0	64.8	64.8	64.8	38.8	38.8
9-10 PM	630	0.0	61	0.0	OFF	630	0	61	0.00	0	65.2	65.2	65.2	39.0	39.0
10-11 PM	517	0.0	50	0.0	OFF	517	0	50	0.00	0	65.4	65.4	65.4	39.1	39.1
11PM-MID	388	0.0	38	0.0	OFF	388	0	38	0.00	0	65.6	65.6	65.6	39.2	39.2

"OFF" INDICATES NO ROAD WORK (ALL LANES OPEN TO TRAFFIC)

----- SITE BREAKDOWN DELAYS -----	
BREAKDOWN DURATION (MINS)	0
RANGE OF QUEUE DELAY - MIN	0.0
(VEH-H) MAX	0.0
RANGE OF DIVN DELAY - MIN	0.0
(VEH-H) MAX	0.0
AV BREAKDOWNS PER DAY	0.00
AV QUEUE DELAY/DAY (VEH-H)	0.0
AV DIVN DELAY/DAY (VEH-H)	0.0
AV TOTAL DELAY/DAY (VEH-H)	0.0

----- SITE ACCIDENT DELAYS -----	
ACCIDENT DURATION (MINS)	0
RANGE OF QUEUE DELAY - MIN	0.0
(VEH-H) MAX	0.0
RANGE OF DIVN DELAY - MIN	0.0
(VEH-H) MAX	0.0
AV ACCIDENTS PER DAY	0.00
AV QUEUE DELAY/DAY (VEH-H)	0.0
AV DIVN DELAY/DAY (VEH-H)	0.0
AV TOTAL DELAY/DAY (VEH-H)	0.0

AVERAGE ACCIDENT NUMBERS (PIA/DAY)	
MAIN ROUTE WITHOUT WORKS	0.0339
MAIN ROUTE WITH WORKS	0.0324
DIVERSION	0.0439

PIA: Personal Injury Accidents

IMPACTS ON ROAD USERS	
ROAD USER COSTS PER DAY (DOLLARS)	\$15,083
CONGESTED HOURS PER DAY*	1

*Delays Exceeding 15 Minutes

IH 94: STH 65 TO USH 12/STH 29 (DUNN AND ST CROIX COUNTIES)
OFF-PEAK DAY CLOSURE
DIVERSION ROUTE: STH 128 - USH 12 - USH 63

MAY
 Analyzed for 2009
 Construction Season

GRAPHICAL REPRESENTATION OF TRAFFIC MODEL INPUT AND OUTPUT
FRIDAY EASTBOUND DIRECTION

