

IH 94: STH 35 N TO CARMICHAEL RD (ST CROIX COUNTY) CONTINUOUS (24 HOUR) 2 LANE CLOSURE DIVERSION ROUTE: STH 35 - COULEE RD - CARMICHAEL RD	MAY
	Analyzed for 2009 Construction Season

SUMMARY OF TRAFFIC MODEL OUTPUT

FRIDAY WESTBOUND DIRECTION

TIME OF DAY	FLOWS AND CAPACITY IN VEH/HR								AVERAGE SPEEDS IN MPH						
	MAIN ROUTE		ALTERNATE ROUTE		SITE CAPA CITY	FLOW MAIN ROUTE	FLOW DIVER -TING	TOTAL DIVN FLOW	AV.DEL PER VEH (MINS)	AVERAGE QUEUE (VEH)	MAIN ROUTE		ALTERNATE ROUTE		
	DEMAND FLOW	PCT HEAVY	NORMAL FLOW	PCT HEAVY							WITHOUT WORK ZN	WITH WORK ZN	SITE	WITHOUT WORK ZN	WITH WORK ZN
MID-1 AM	601	0.0	71	0.0	1500	601	0	71	0.54	0	70.0	50.1	43.1	19.3	19.3
1-2 AM	561	0.0	66	0.0	1500	561	0	66	0.54	0	70.0	50.2	43.3	19.4	19.4
2-3 AM	545	0.0	64	0.0	1500	545	0	64	0.54	0	70.0	50.3	43.3	19.4	19.4
3-4 AM	619	0.0	73	0.0	1500	619	0	73	0.55	0	70.0	50.0	43.0	19.3	19.3
4-5 AM	1011	0.0	119	0.0	1499	1011	0	119	0.61	0	69.5	48.3	41.1	18.9	18.9
5-6 AM	1738	0.0	205	0.0	1499	1738	0	205	3.10	77	68.6	21.4	30.8	18.3	18.3
6-7 AM	2322	0.0	273	0.0	1499	1609	713	986	12.67	305	67.9	8.1	30.8	17.7	13.2
7-8 AM	2308	0.0	272	0.0	1499	1475	833	1105	13.84	334	67.9	7.7	30.8	17.8	12.3
8-9 AM	2116	0.0	249	0.0	1499	1451	666	915	12.01	286	68.1	8.3	30.8	17.9	13.6
9-10 AM	2189	0.0	257	0.0	1500	1525	664	921	12.06	287	68.0	8.3	30.8	17.8	13.6
10-11 AM	2271	0.0	267	0.0	1499	1526	744	1011	12.88	309	67.9	8.0	30.8	17.8	13.0
11A-NOON	2476	0.0	292	0.0	1500	1575	901	1193	14.87	361	67.6	7.4	30.8	17.6	11.7
NOON-1PM	2770	0.0	326	0.0	1500	1586	1185	1511	18.75	464	67.3	6.6	30.8	17.3	10.1
1-2 PM	3096	0.0	364	0.0	1500	1514	1583	1947+	20.24	502	66.9	6.3	30.8	17.0	9.6
2-3 PM	3193	0.0	376	0.0	1500	1502	1691	2067+	20.31	504	66.8	6.3	30.8	16.9	9.5
3-4 PM	3387	0.0	399	0.0	1499	1500	1887	2285+	20.32	505	66.5	6.3	30.8	16.8	9.5
4-5 PM	3423	0.0	403	0.0	1500	1500	1923	2326+	20.32	505	66.5	6.3	30.8	16.7	9.5
5-6 PM	3277	0.0	386	0.0	1500	1500	1777	2163+	20.32	505	66.6	6.3	30.8	16.8	9.5
6-7 PM	2855	0.0	336	0.0	1500	1496	1358	1694+	20.03	497	67.2	6.3	30.8	17.2	9.6
7-8 PM	2369	0.0	279	0.0	1499	1338	1031	1310	16.53	407	67.8	7.0	30.8	17.7	10.9
8-9 PM	2157	0.0	254	0.0	1500	1437	720	974	12.54	300	68.1	8.1	30.8	17.9	13.2
9-10 PM	1833	0.0	216	0.0	1500	1434	400	615	9.88	231	68.4	9.4	30.8	18.2	15.7
10-11 PM	1467	0.0	173	0.0	1500	1404	63	235	7.39	166	68.9	11.2	30.8	18.5	18.3
11PM-MID	956	0.0	113	0.0	1500	956	0	113	0.86	13	69.6	42.8	41.5	19.0	19.0

+ INDICATES DIVERSION FLOW EXCEEDS USER-SPECIFIED WARNING LIMIT

----- SITE BREAKDOWN DELAYS -----	
BREAKDOWN DURATION (MINS)	0
RANGE OF QUEUE DELAY - MIN	0.0
(VEH-H) MAX	0.0
RANGE OF DIVN DELAY - MIN	0.0
(VEH-H) MAX	0.0
AV BREAKDOWNS PER DAY	0.00
AV QUEUE DELAY/DAY (VEH-H)	0.0
AV DIVN DELAY/DAY (VEH-H)	0.0
AV TOTAL DELAY/DAY (VEH-H)	0.0

----- SITE ACCIDENT DELAYS -----	
ACCIDENT DURATION (MINS)	0
RANGE OF QUEUE DELAY - MIN	0.0
(VEH-H) MAX	0.0
RANGE OF DIVN DELAY - MIN	0.0
(VEH-H) MAX	0.0
AV ACCIDENTS PER DAY	0.00
AV QUEUE DELAY/DAY (VEH-H)	0.0
AV DIVN DELAY/DAY (VEH-H)	0.0
AV TOTAL DELAY/DAY (VEH-H)	0.0

AVERAGE ACCIDENT NUMBERS (PIA/DAY)	
MAIN ROUTE WITHOUT WORKS	0.0126
MAIN ROUTE WITH WORKS	0.0059
DIVERSION	0.0782

PIA: Personal Injury Accidents

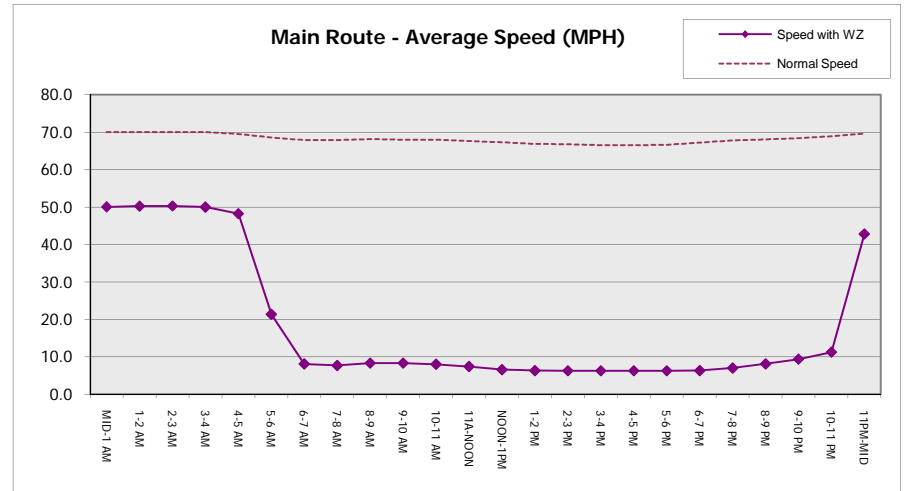
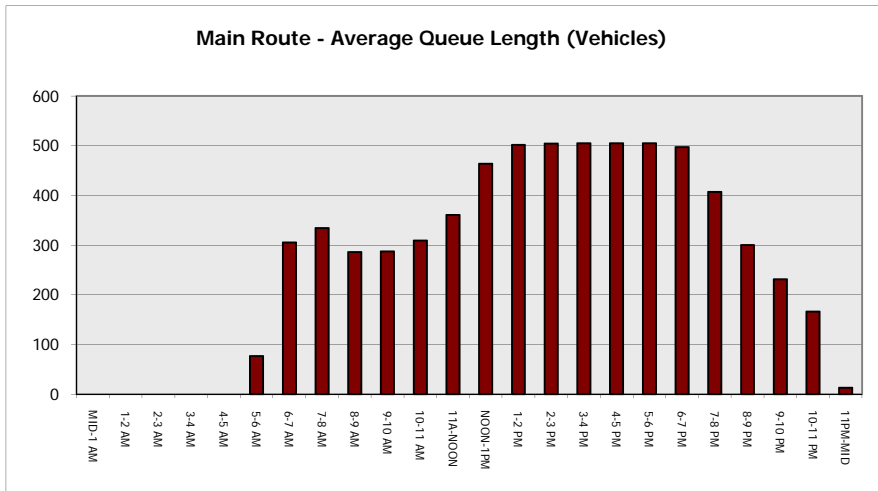
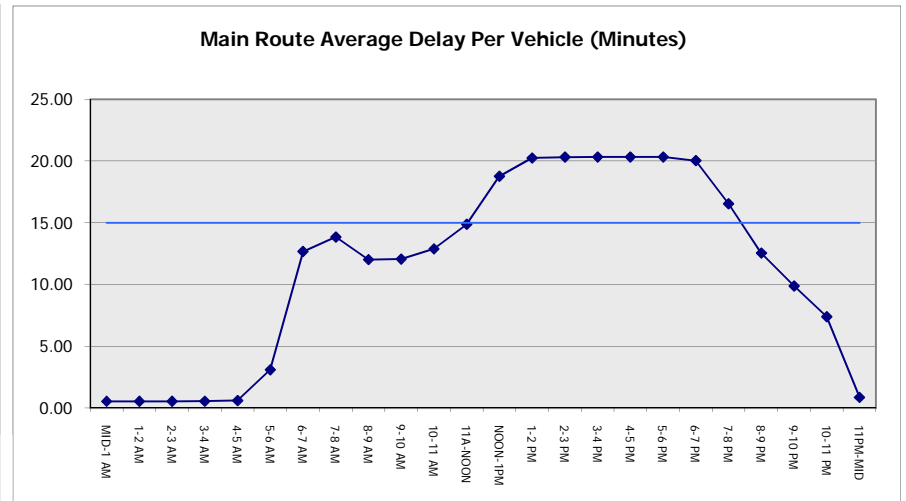
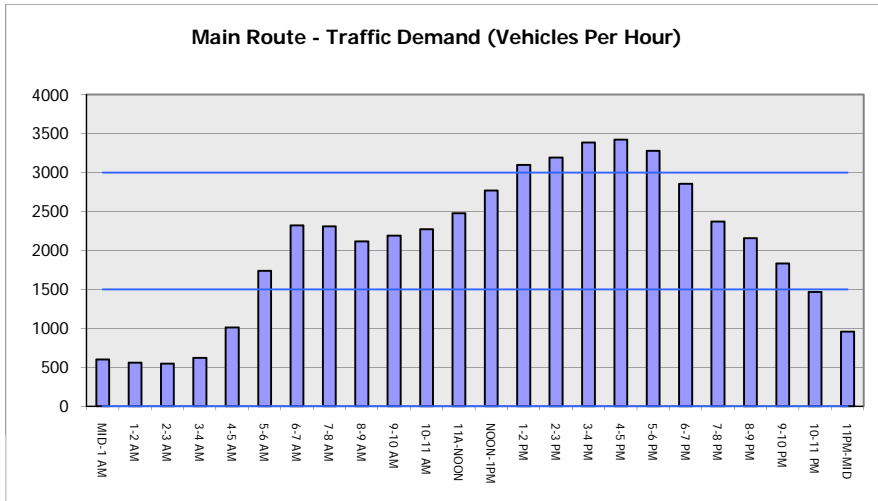
IMPACTS ON ROAD USERS	
ROAD USER COSTS PER DAY (DOLLARS)	\$180,854
CONGESTED HOURS PER DAY*	8

*Delays Exceeding 15 Minutes

**IH 94: STH 35 N TO CARMICHAEL RD (ST CROIX COUNTY)
 CONTINUOUS (24 HOUR) 2 LANE CLOSURE
 DIVERSION ROUTE: STH 35 - COULEE RD - CARMICHAEL RD**

MAY
 Analyzed for 2009
 Construction Season

GRAPHICAL REPRESENTATION OF TRAFFIC MODEL INPUT AND OUTPUT
FRIDAY WESTBOUND DIRECTION



IH 94: STH 35 N TO CARMICHAEL RD (ST CROIX COUNTY) CONTINUOUS (24 HOUR) 2 LANE CLOSURE DIVERSION ROUTE: STH 35 - COULEE RD - CARMICHAEL RD	MAY
	Analyzed for 2009 Construction Season

SUMMARY OF TRAFFIC MODEL OUTPUT

FRIDAY EASTBOUND DIRECTION

TIME OF DAY	FLOWS AND CAPACITY IN VEH/HR							AVERAGE SPEEDS IN MPH			AVERAGE SPEEDS IN MPH				
	MAIN		DIVERSION		SITE CAPA CITY	FLOW MAIN ROUTE	FLOW DIVER -TING	TOTAL DIVN FLOW	AV.DEL PER VEH (MINS)	AVERAGE QUEUE (VEH)	MAIN ROUTE		ALTERNATE ROUTE		
	DEMAND FLOW	PCT HEAVY	NORMAL FLOW	PCT HEAVY							WITHOUT WORK ZN	WITH WORK ZN	SITE	WITHOUT WORK ZN	WITH WORK ZN
MID-1 AM	581	0.0	68	0.0	1500	581	0	68	0.54	0	70.0	50.2	43.2	19.3	19.3
1-2 AM	378	0.0	44	0.0	1500	378	0	44	0.52	0	70.2	50.9	44.0	19.5	19.5
2-3 AM	369	0.0	44	0.0	1500	369	0	44	0.52	0	70.2	50.9	44.0	19.5	19.5
3-4 AM	358	0.0	42	0.0	1500	358	0	42	0.52	0	70.2	50.9	44.0	19.6	19.6
4-5 AM	533	0.0	63	0.0	1500	533	0	63	0.54	0	70.0	50.3	43.4	19.4	19.4
5-6 AM	827	0.0	97	0.0	1500	827	0	97	0.57	0	69.7	49.3	42.3	19.1	19.1
6-7 AM	1397	0.0	164	0.0	1499	1397	0	164	1.12	6	69.0	38.3	34.0	18.6	18.6
7-8 AM	2093	0.0	246	0.0	1500	1769	323	569	8.66	215	68.1	10.3	30.8	17.9	16.0
8-9 AM	2361	0.0	278	0.0	1499	1572	790	1068	13.46	325	67.8	7.8	30.8	17.7	12.6
9-10 AM	2945	0.0	346	0.0	1500	1633	1312	1658+	19.06	473	67.1	6.5	30.8	17.1	9.9
10-11 AM	3261	0.0	384	0.0	1499	1500	1761	2145+	20.32	505	66.7	6.3	30.8	16.8	9.5
11A-NOON	3399	0.0	400	0.0	1500	1500	1899	2299+	20.32	505	66.5	6.3	30.8	16.7	9.5
NOON-1PM	3609	0.0	425	0.0	1500	1500	2109	2534+	20.31	505	66.2	6.3	30.8	16.5	9.5
1-2 PM	4152	0.0	489	0.0	1500	1500	2652	3140+	20.18	505	62.5	6.3	30.8	16.0	9.5
2-3 PM	4184	0.0	493	0.0	1500	1500	2684	3176+	20.17	505	62.3	6.3	30.8	16.0	9.5
3-4 PM	4599	0.0	542	0.0	1500	1500	3099	3641+	20.07	505	59.4	6.3	30.8	15.6	9.5
4-5 PM	4687	0.0	551	0.0	1500	1500	3187	3738+	20.04	505	58.8	6.3	30.8	15.5	9.5
5-6 PM	4501	0.0	529	0.0	1500	1500	3001	3530+	20.09	505	60.1	6.3	30.8	15.7	9.5
6-7 PM	4318	0.0	508	0.0	1500	1500	2818	3327+	20.14	505	61.4	6.3	30.8	15.9	9.5
7-8 PM	3003	0.0	354	0.0	1500	1491	1512	1865+	20.10	498	67.0	6.3	30.8	17.1	9.6
8-9 PM	2013	0.0	236	0.0	1499	1226	786	1023	13.19	327	68.2	7.9	31.0	18.0	13.0
9-10 PM	1486	0.0	175	0.0	1500	1404	82	257	7.62	172	68.9	11.0	30.8	18.5	18.1
10-11 PM	1221	0.0	143	0.0	1499	1221	0	143	1.54	36	69.2	32.8	36.5	18.8	18.8
11PM-MID	917	0.0	108	0.0	1500	917	0	108	0.58	0	69.6	49.0	42.0	19.0	19.0

+ INDICATES DIVERSION FLOW EXCEEDS USER-SPECIFIED WARNING LIMIT

----- SITE BREAKDOWN DELAYS -----	
BREAKDOWN DURATION (MINS)	0
RANGE OF QUEUE DELAY - MIN	0.0
(VEH-H) MAX	0.0
RANGE OF DIVN DELAY - MIN	0.0
(VEH-H) MAX	0.0
AV BREAKDOWNS PER DAY	0.00
AV QUEUE DELAY/DAY (VEH-H)	0.0
AV DIVN DELAY/DAY (VEH-H)	0.0
AV TOTAL DELAY/DAY (VEH-H)	0.0

----- SITE ACCIDENT DELAYS -----	
ACCIDENT DURATION (MINS)	0
RANGE OF QUEUE DELAY - MIN	0.0
(VEH-H) MAX	0.0
RANGE OF DIVN DELAY - MIN	0.0
(VEH-H) MAX	0.0
AV ACCIDENTS PER DAY	0.00
AV QUEUE DELAY/DAY (VEH-H)	0.0
AV DIVN DELAY/DAY (VEH-H)	0.0
AV TOTAL DELAY/DAY (VEH-H)	0.0

AVERAGE ACCIDENT NUMBERS (PIA/DAY)	
MAIN ROUTE WITHOUT WORKS	0.0145
MAIN ROUTE WITH WORKS	0.0055
DIVERSION	0.1133

PIA: Personal Injury Accidents

IMPACTS ON ROAD USERS	
ROAD USER COSTS PER DAY (DOLLARS)	\$237,358
CONGESTED HOURS PER DAY*	11

*Delays Exceeding 15 Minutes

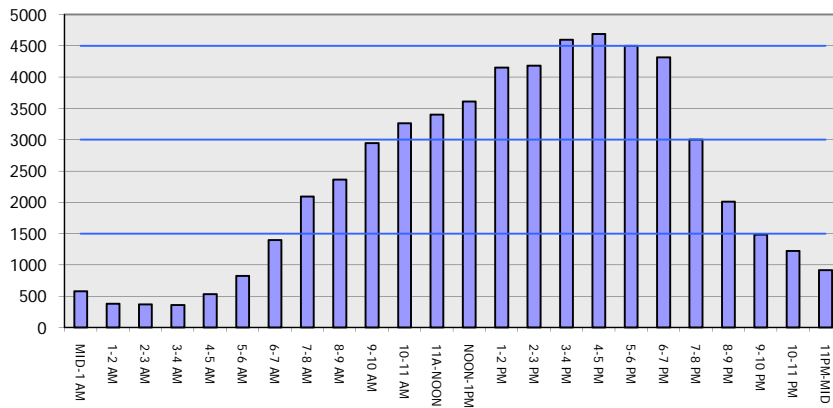
**IH 94: STH 35 N TO CARMICHAEL RD (ST CROIX COUNTY)
 CONTINUOUS (24 HOUR) 2 LANE CLOSURE
 DIVERSION ROUTE: STH 35 - COULEE RD - CARMICHAEL RD**

MAY
 Analyzed for 2009
 Construction Season

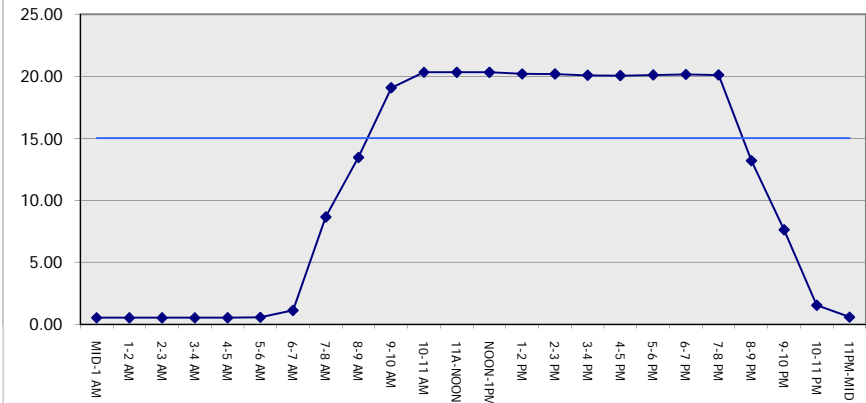
GRAPHICAL REPRESENTATION OF TRAFFIC MODEL INPUT AND OUTPUT

FRIDAY EASTBOUND DIRECTION

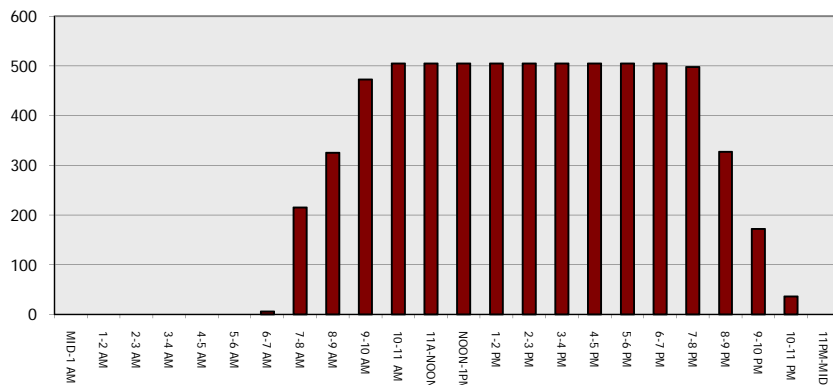
Main Route - Traffic Demand (Vehicles Per Hour)



Main Route Average Delay Per Vehicle (Minutes)



Main Route - Average Queue Length (Vehicles)



Main Route - Average Speed (MPH)

