

IH 94: STH 35 N TO CARMICHAEL RD (ST CROIX COUNTY) CONTINUOUS (24 HOUR) 1 LANE CLOSURE DIVERSION ROUTE: STH 35 - COULEE RD - CARMICHAEL RD	MAY
	Analyzed for 2009 Construction Season

SUMMARY OF TRAFFIC MODEL OUTPUT

FRIDAY WESTBOUND DIRECTION

TIME OF DAY	FLOWS AND CAPACITY IN VEH/HR						AVERAGE SPEEDS IN MPH								
	MAIN ROUTE		ALTERNATE ROUTE		SITE CAPA CITY	FLOW MAIN ROUTE	FLOW DIVER -TING	TOTAL DIVN FLOW	AV.DEL PER VEH (MINS)	AVERAGE QUEUE (VEH)	MAIN ROUTE		ALTERNATE ROUTE		
	DEMAND FLOW	PCT HEAVY	NORMAL FLOW	PCT HEAVY							WITHOUT WORK ZN	WITH WORK ZN	SITE	WITHOUT WORK ZN	WITH WORK ZN
MID-1 AM	601	0.0	71	0.0	3000	601	0	71	0.36	0	70.0	55.5	49.7	19.3	19.3
1-2 AM	561	0.0	66	0.0	3000	561	0	66	0.36	0	70.0	55.5	49.7	19.4	19.4
2-3 AM	545	0.0	64	0.0	3000	545	0	64	0.36	0	70.0	55.5	49.7	19.4	19.4
3-4 AM	619	0.0	73	0.0	3000	619	0	73	0.36	0	70.0	55.5	49.7	19.3	19.3
4-5 AM	1011	0.0	119	0.0	3000	1011	0	119	0.35	0	69.5	55.4	49.7	18.9	18.9
5-6 AM	1738	0.0	205	0.0	3000	1738	0	205	0.34	0	68.6	55.2	49.7	18.3	18.3
6-7 AM	2322	0.0	273	0.0	3000	2322	0	273	0.33	0	67.9	55.0	49.7	17.7	17.7
7-8 AM	2308	0.0	272	0.0	3000	2308	0	272	0.33	0	67.9	55.0	49.7	17.8	17.8
8-9 AM	2116	0.0	249	0.0	3000	2116	0	249	0.33	0	68.1	55.1	49.7	17.9	17.9
9-10 AM	2189	0.0	257	0.0	3000	2189	0	257	0.33	0	68.0	55.0	49.7	17.8	17.8
10-11 AM	2271	0.0	267	0.0	3000	2271	0	267	0.33	0	67.9	55.0	49.7	17.8	17.8
11A-NOON	2476	0.0	292	0.0	3000	2476	0	292	0.39	0	67.6	53.2	47.4	17.6	17.6
NOON-1PM	2770	0.0	326	0.0	2999	2770	0	326	0.58	0	67.3	47.9	41.2	17.3	17.3
1-2 PM	3096	0.0	364	0.0	2999	3096	0	364	1.29	35	66.9	35.1	37.3	17.0	17.0
2-3 PM	3193	0.0	376	0.0	3000	3193	0	376	3.94	184	66.8	18.6	37.3	16.9	17.3
3-4 PM	3387	0.0	399	0.0	3000	3273	114	513	8.78	451	66.5	12.4	37.3	16.8	18.0
4-5 PM	3423	0.0	403	0.0	2999	3030	393	796	11.34	585	66.5	11.1	37.3	16.7	16.4
5-6 PM	3277	0.0	386	0.0	2999	2929	348	734	10.90	561	66.6	11.3	37.3	16.8	16.8
6-7 PM	2855	0.0	336	0.0	2999	2790	64	400	8.38	424	67.2	12.7	37.3	17.2	18.8
7-8 PM	2369	0.0	279	0.0	2999	2369	0	279	1.21	88	67.8	36.9	45.8	17.7	17.8
8-9 PM	2157	0.0	254	0.0	3000	2157	0	254	0.33	0	68.1	55.1	49.7	17.9	17.9
9-10 PM	1833	0.0	216	0.0	3000	1833	0	216	0.34	0	68.4	55.1	49.7	18.2	18.2
10-11 PM	1467	0.0	173	0.0	3000	1467	0	173	0.34	0	68.9	55.3	49.7	18.5	18.5
11PM-MID	956	0.0	113	0.0	3000	956	0	113	0.35	0	69.6	55.4	49.7	19.0	19.0

----- SITE BREAKDOWN DELAYS -----	
BREAKDOWN DURATION (MINS)	0
RANGE OF QUEUE DELAY - MIN	0.0
(VEH-H) MAX	0.0
RANGE OF DIVN DELAY - MIN	0.0
(VEH-H) MAX	0.0
AV BREAKDOWNS PER DAY	0.00
AV QUEUE DELAY/DAY (VEH-H)	0.0
AV DIVN DELAY/DAY (VEH-H)	0.0
AV TOTAL DELAY/DAY (VEH-H)	0.0

----- SITE ACCIDENT DELAYS -----	
ACCIDENT DURATION (MINS)	0
RANGE OF QUEUE DELAY - MIN	0.0
(VEH-H) MAX	0.0
RANGE OF DIVN DELAY - MIN	0.0
(VEH-H) MAX	0.0
AV ACCIDENTS PER DAY	0.00
AV QUEUE DELAY/DAY (VEH-H)	0.0
AV DIVN DELAY/DAY (VEH-H)	0.0
AV TOTAL DELAY/DAY (VEH-H)	0.0

AVERAGE ACCIDENT NUMBERS (PIA/DAY)	
MAIN ROUTE WITHOUT WORKS	0.0126
MAIN ROUTE WITH WORKS	0.0091
DIVERSION	0.0220

PIA: Personal Injury Accidents

IMPACTS ON ROAD USERS	
ROAD USER COSTS PER DAY (DOLLARS)	\$38,236
CONGESTED HOURS PER DAY*	0

*Delays Exceeding 15 Minutes

**IH 94: STH 35 N TO CARMICHAEL RD (ST CROIX COUNTY)
 CONTINUOUS (24 HOUR) 1 LANE CLOSURE
 DIVERSION ROUTE: STH 35 - COULEE RD - CARMICHAEL RD**

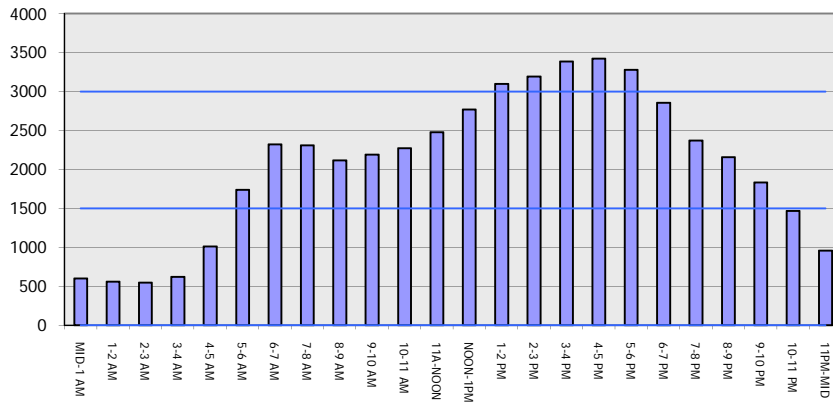
MAY

Analyzed for 2009
 Construction Season

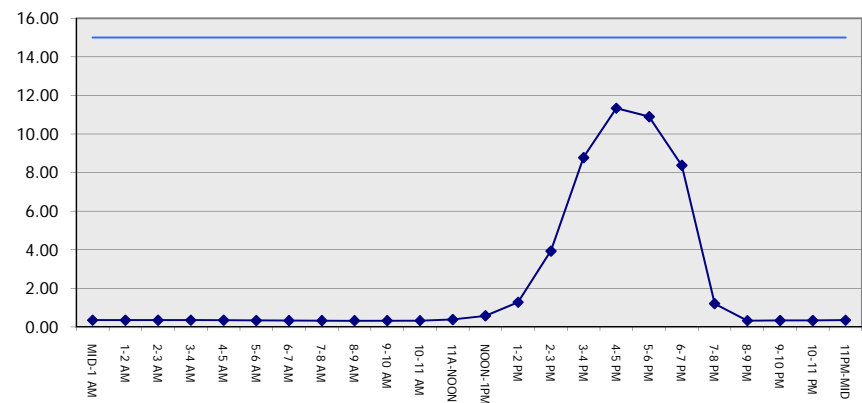
GRAPHICAL REPRESENTATION OF TRAFFIC MODEL INPUT AND OUTPUT

FRIDAY WESTBOUND DIRECTION

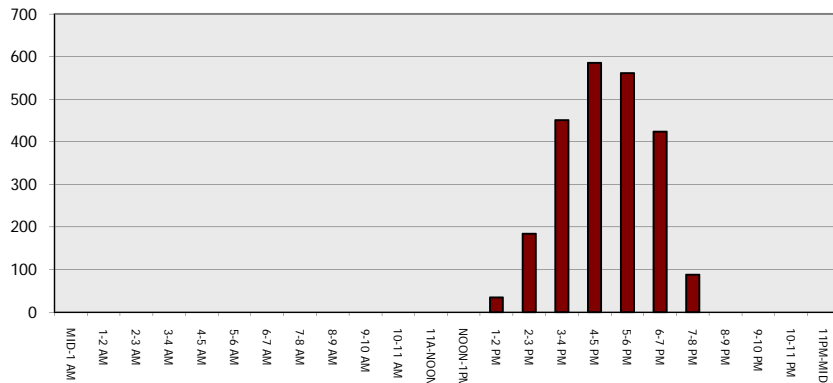
Main Route - Traffic Demand (Vehicles Per Hour)



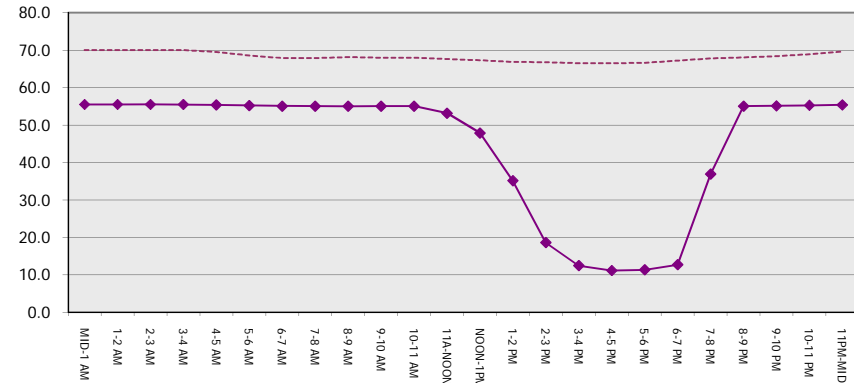
Main Route Average Delay Per Vehicle (Minutes)



Main Route - Average Queue Length (Vehicles)



Main Route - Average Speed (MPH)



IH 94: STH 35 N TO CARMICHAEL RD (ST CROIX COUNTY) CONTINUOUS (24 HOUR) 1 LANE CLOSURE DIVERSION ROUTE: STH 35 - COULEE RD - CARMICHAEL RD	MAY
	Analyzed for 2009 Construction Season

SUMMARY OF TRAFFIC MODEL OUTPUT

FRIDAY EASTBOUND DIRECTION

TIME OF DAY	FLOWS AND CAPACITY IN VEH/HR							AVERAGE SPEEDS IN MPH			AVERAGE SPEEDS IN MPH				
	MAIN		DIVERSION		SITE CAPA CITY	FLOW MAIN ROUTE	FLOW DIVER -TING	TOTAL DIVN FLOW	AV.DEL PER VEH (MINS)	AVERAGE QUEUE (VEH)	MAIN ROUTE		ALTERNATE ROUTE		
	DEMAND FLOW	PCT HEAVY	NORMAL FLOW	PCT HEAVY							WITHOUT WORK ZN	WITH WORK ZN	SITE	WITHOUT WORK ZN	WITH WORK ZN
MID-1 AM	581	0.0	68	0.0	3000	581	0	68	0.36	0	70.0	55.5	49.7	19.3	19.3
1-2 AM	378	0.0	44	0.0	3000	378	0	44	0.36	0	70.2	55.6	49.7	19.5	19.5
2-3 AM	369	0.0	44	0.0	3000	369	0	44	0.36	0	70.2	55.6	49.7	19.5	19.5
3-4 AM	358	0.0	42	0.0	3000	358	0	42	0.36	0	70.2	55.6	49.7	19.6	19.6
4-5 AM	533	0.0	63	0.0	3000	533	0	63	0.36	0	70.0	55.5	49.7	19.4	19.4
5-6 AM	827	0.0	97	0.0	3000	827	0	97	0.35	0	69.7	55.5	49.7	19.1	19.1
6-7 AM	1397	0.0	164	0.0	3000	1397	0	164	0.34	0	69.0	55.3	49.7	18.6	18.6
7-8 AM	2093	0.0	246	0.0	3000	2093	0	246	0.33	0	68.1	55.1	49.7	17.9	17.9
8-9 AM	2361	0.0	278	0.0	2999	2361	0	278	0.36	0	67.8	54.2	48.6	17.7	17.7
9-10 AM	2945	0.0	346	0.0	2999	2945	0	346	0.79	7	67.1	43.2	38.6	17.1	17.1
10-11 AM	3261	0.0	384	0.0	3000	3261	0	384	3.07	145	66.7	21.9	37.3	16.8	17.1
11A-NOON	3399	0.0	400	0.0	3000	3281	119	518	8.81	452	66.5	12.4	37.3	16.7	18.0
NOON-1PM	3609	0.0	425	0.0	2999	3135	475	899	12.18	633	66.2	10.8	37.3	16.5	15.8
1-2 PM	4152	0.0	489	0.0	3000	3346	806	1294	16.61	889	62.5	9.6	37.3	16.0	13.4
2-3 PM	4184	0.0	493	0.0	2999	3060	1124	1617+	20.30	1092	62.3	9.0	37.3	16.0	12.0
3-4 PM	4599	0.0	542	0.0	3000	3059	1541	2083+	21.31	1157	59.4	8.9	37.3	15.6	11.7
4-5 PM	4687	0.0	551	0.0	3000	3001	1686	2237+	21.60	1175	58.8	8.8	37.3	15.5	11.7
5-6 PM	4501	0.0	529	0.0	3000	2975	1526	2055+	21.36	1158	60.1	8.9	37.3	15.7	11.7
6-7 PM	4318	0.0	508	0.0	2999	2946	1373	1881+	20.97	1132	61.4	8.9	37.3	15.9	11.9
7-8 PM	3003	0.0	354	0.0	2999	2332	671	1024	13.80	742	67.0	10.4	37.8	17.1	15.2
8-9 PM	2013	0.0	236	0.0	2999	2013	0	236	1.27	111	68.2	36.6	47.8	18.0	18.3
9-10 PM	1486	0.0	175	0.0	3000	1486	0	175	0.34	0	68.9	55.3	49.7	18.5	18.5
10-11 PM	1221	0.0	143	0.0	3000	1221	0	143	0.35	0	69.2	55.3	49.7	18.8	18.8
11PM-MID	917	0.0	108	0.0	3000	917	0	108	0.35	0	69.6	55.4	49.7	19.0	19.0

+ INDICATES DIVERSION FLOW EXCEEDS USER-SPECIFIED WARNING LIMIT

----- SITE BREAKDOWN DELAYS -----	
BREAKDOWN DURATION (MINS)	0
RANGE OF QUEUE DELAY - MIN	0.0
(VEH-H) MAX	0.0
RANGE OF DIVN DELAY - MIN	0.0
(VEH-H) MAX	0.0
AV BREAKDOWNS PER DAY	0.00
AV QUEUE DELAY/DAY (VEH-H)	0.0
AV DIVN DELAY/DAY (VEH-H)	0.0
AV TOTAL DELAY/DAY (VEH-H)	0.0

----- SITE ACCIDENT DELAYS -----	
ACCIDENT DURATION (MINS)	0
RANGE OF QUEUE DELAY - MIN	0.0
(VEH-H) MAX	0.0
RANGE OF DIVN DELAY - MIN	0.0
(VEH-H) MAX	0.0
AV ACCIDENTS PER DAY	0.00
AV QUEUE DELAY/DAY (VEH-H)	0.0
AV DIVN DELAY/DAY (VEH-H)	0.0
AV TOTAL DELAY/DAY (VEH-H)	0.0

AVERAGE ACCIDENT NUMBERS (PIA/DAY)	
MAIN ROUTE WITHOUT WORKS	0.0145
MAIN ROUTE WITH WORKS	0.0090
DIVERSION	0.0523

PIA: Personal Injury Accidents

IMPACTS ON ROAD USERS	
ROAD USER COSTS PER DAY (DOLLARS)	\$163,354
CONGESTED HOURS PER DAY*	6

*Delays Exceeding 15 Minutes

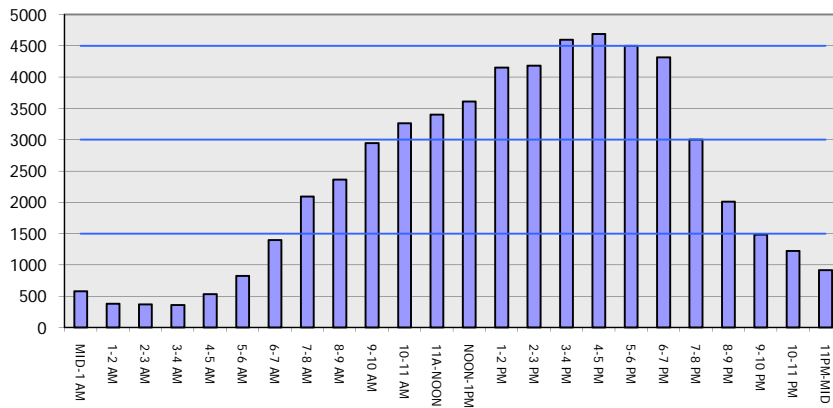
**IH 94: STH 35 N TO CARMICHAEL RD (ST CROIX COUNTY)
 CONTINUOUS (24 HOUR) 1 LANE CLOSURE
 DIVERSION ROUTE: STH 35 - COULEE RD - CARMICHAEL RD**

MAY
 Analyzed for 2009
 Construction Season

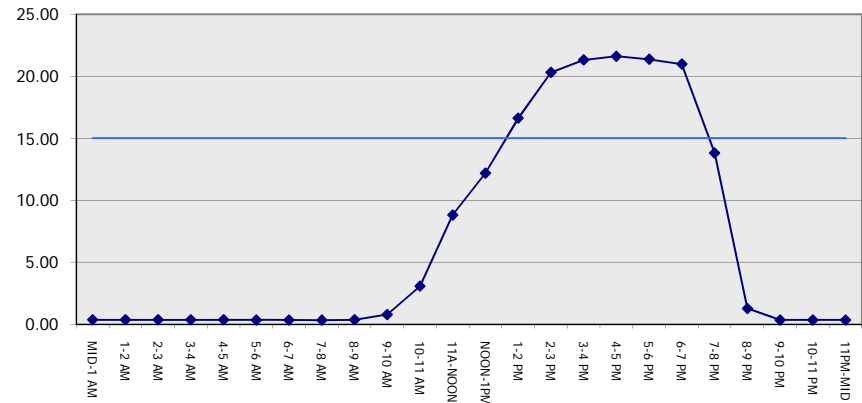
GRAPHICAL REPRESENTATION OF TRAFFIC MODEL INPUT AND OUTPUT

FRIDAY EASTBOUND DIRECTION

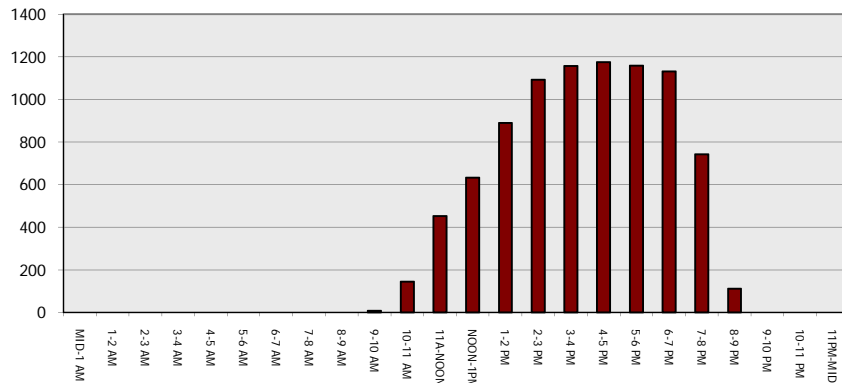
Main Route - Traffic Demand (Vehicles Per Hour)



Main Route Average Delay Per Vehicle (Minutes)



Main Route - Average Queue Length (Vehicles)



Main Route - Average Speed (MPH)

