

IH 94: STH 35 TO STH 65 (ST CROIX COUNTY) CONTINUOUS (24 HOUR) CLOSURE DIVERSION ROUTE: STH 65 - USH 12	MAY
	Analyzed for 2009 Construction Season

SUMMARY OF TRAFFIC MODEL OUTPUT

SATURDAY WESTBOUND DIRECTION

TIME OF DAY	FLOWS AND CAPACITY IN VEH/HR							AVERAGE SPEEDS IN MPH							
	MAIN ROUTE		ALTERNATE ROUTE		SITE CAPA CITY	FLOW MAIN ROUTE	FLOW DIVER -TING	TOTAL DIVN FLOW	AV.DEL PER VEH (MINS)	AVERAGE QUEUE (VEH)	MAIN ROUTE		ALTERNATE ROUTE		
	DEMAND FLOW	PCT HEAVY	NORMAL FLOW	PCT HEAVY							WITHOUT WORK ZN	WITH WORK ZN	SITE	WITHOUT WORK ZN	WITH WORK ZN
MID-1 AM	341	0.0	68	0.0	1500	341	0	68	0.46	0	65.8	60.7	44.2	38.9	38.9
1-2 AM	273	0.0	54	0.0	1500	273	0	54	0.45	0	65.9	60.9	44.4	39.1	39.1
2-3 AM	242	0.0	48	0.0	1500	242	0	48	0.45	0	66.0	61.0	44.5	39.1	39.1
3-4 AM	226	0.0	45	0.0	1500	226	0	45	0.44	0	66.0	61.0	44.6	39.2	39.2
4-5 AM	277	0.0	55	0.0	1500	277	0	55	0.45	0	65.9	60.9	44.4	39.1	39.1
5-6 AM	348	0.0	69	0.0	1500	348	0	69	0.46	0	65.8	60.7	44.1	38.9	38.9
6-7 AM	484	0.0	96	0.0	1500	484	0	96	0.47	0	65.5	60.4	43.6	38.6	38.6
7-8 AM	731	0.0	145	0.0	1500	731	0	145	0.49	0	65.0	59.7	42.7	37.9	37.9
8-9 AM	1015	0.0	203	0.0	1500	1015	0	203	0.52	0	64.5	59.0	41.6	37.2	37.2
9-10 AM	1315	0.0	263	0.0	1499	1315	0	263	0.78	0	64.0	56.1	35.2	36.5	36.5
10-11 AM	1556	0.0	311	0.0	1499	1556	0	311	1.71	19	63.5	48.8	30.8	35.9	35.9
11A-NOON	1593	0.0	318	0.0	1499	1593	0	318	4.72	102	63.4	34.7	30.8	35.8	35.8
NOON-1PM	1585	0.0	316	0.0	1499	1585	0	316	8.11	192	63.4	26.1	30.8	35.8	35.8
1-2 PM	1564	0.0	312	0.0	1499	1544	19	331	10.81	264	63.5	21.9	30.8	35.9	35.6
2-3 PM	1495	0.0	298	0.0	1499	1484	11	309	10.99	268	63.6	21.6	30.8	36.0	35.9
3-4 PM	1490	0.0	297	0.0	1500	1490	0	297	10.61	258	63.6	22.1	30.8	36.1	36.1
4-5 PM	1453	0.0	290	0.0	1499	1453	0	290	9.76	235	63.7	23.3	30.8	36.1	36.1
5-6 PM	1267	0.0	253	0.0	1499	1267	0	253	4.05	101	64.0	37.2	33.2	36.6	36.6
6-7 PM	1093	0.0	218	0.0	1500	1093	0	218	0.53	0	64.3	58.8	41.4	37.0	37.0
7-8 PM	936	0.0	187	0.0	1500	936	0	187	0.51	0	64.6	59.2	41.9	37.4	37.4
8-9 PM	865	0.0	173	0.0	1500	865	0	173	0.51	0	64.8	59.4	42.2	37.6	37.6
9-10 PM	718	0.0	143	0.0	1500	718	0	143	0.49	0	65.0	59.7	42.7	37.9	37.9
10-11 PM	543	0.0	109	0.0	1500	543	0	109	0.48	0	65.4	60.2	43.3	38.4	38.4
11PM-MID	327	0.0	65	0.0	1500	327	0	65	0.45	0	65.8	60.7	44.2	38.9	38.9

----- SITE BREAKDOWN DELAYS -----	
BREAKDOWN DURATION (MINS)	0
RANGE OF QUEUE DELAY - MIN (VEH-H) MAX	0.0
RANGE OF DIVN DELAY - MIN (VEH-H) MAX	0.0
AV BREAKDOWNS PER DAY	0.00
AV QUEUE DELAY/DAY (VEH-H)	0.0
AV DIVN DELAY/DAY (VEH-H)	0.0
AV TOTAL DELAY/DAY (VEH-H)	0.0

----- SITE ACCIDENT DELAYS -----	
ACCIDENT DURATION (MINS)	0
RANGE OF QUEUE DELAY - MIN (VEH-H) MAX	0.0
RANGE OF DIVN DELAY - MIN (VEH-H) MAX	0.0
AV ACCIDENTS PER DAY	0.00
AV QUEUE DELAY/DAY (VEH-H)	0.0
AV DIVN DELAY/DAY (VEH-H)	0.0
AV TOTAL DELAY/DAY (VEH-H)	0.0

AVERAGE ACCIDENT NUMBERS (PIA/DAY)	
MAIN ROUTE WITHOUT WORKS	0.0208
MAIN ROUTE WITH WORKS	0.0193
DIVERSION	0.0513

PIA: Personal Injury Accidents

IMPACTS ON ROAD USERS	
ROAD USER COSTS PER DAY (DOLLARS)	\$27,794
CONGESTED HOURS PER DAY*	0

*Delays Exceeding 15 Minutes

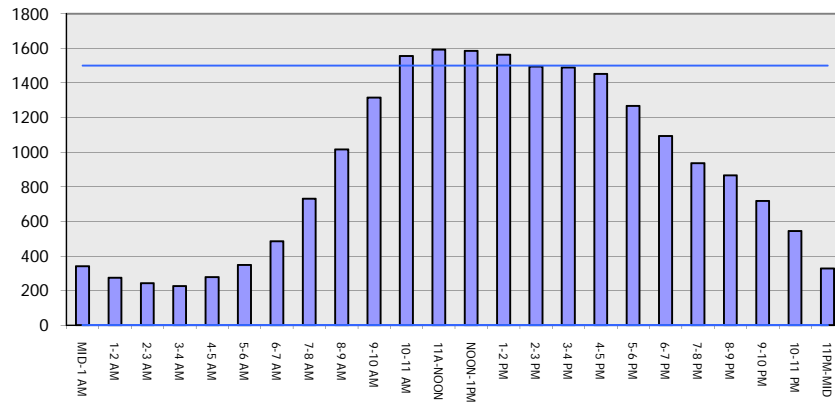
**IH 94: STH 35 TO STH 65 (ST CROIX COUNTY)
CONTINUOUS (24 HOUR) CLOSURE
DIVERSION ROUTE: STH 65 - USH 12**

MAY
Analyzed for 2009
Construction Season

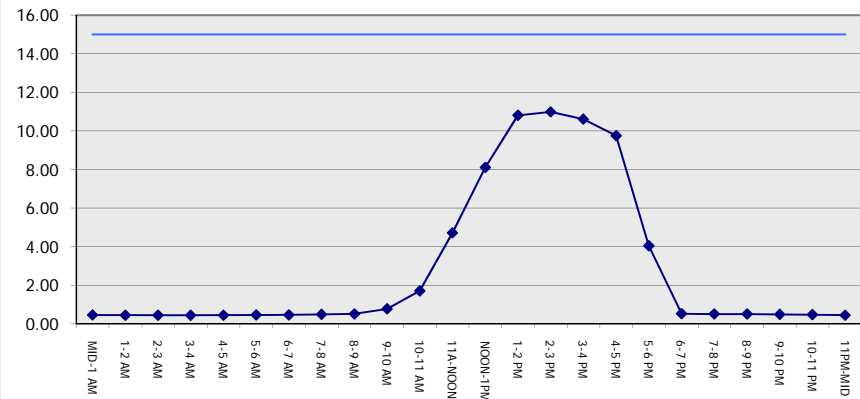
GRAPHICAL REPRESENTATION OF TRAFFIC MODEL INPUT AND OUTPUT

SATURDAY WESTBOUND DIRECTION

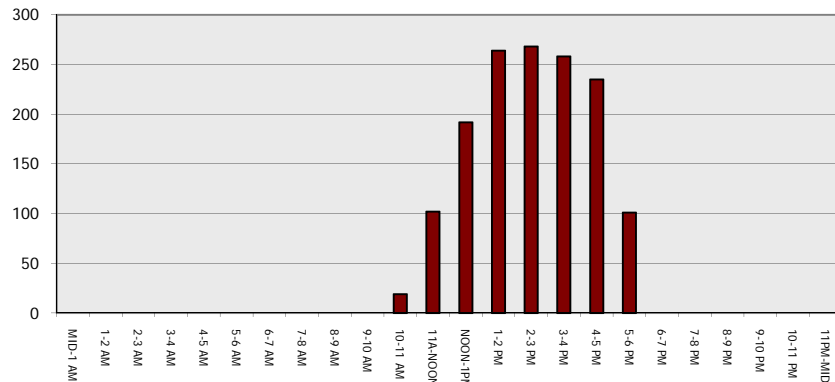
Main Route - Traffic Demand (Vehicles Per Hour)



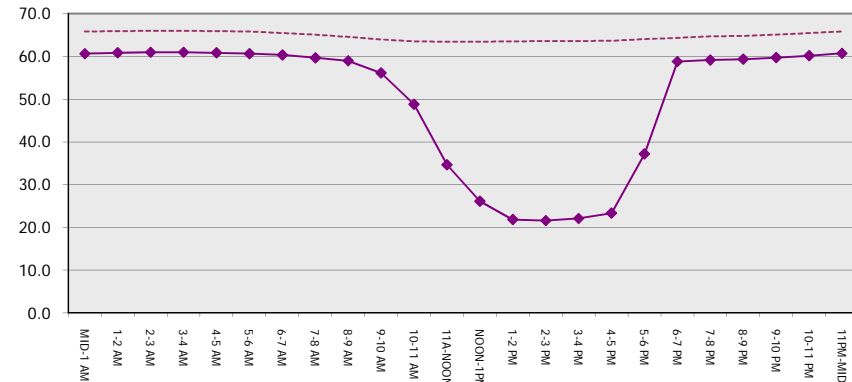
Main Route Average Delay Per Vehicle (Minutes)



Main Route - Average Queue Length (Vehicles)



Main Route - Average Speed (MPH)



IH 94: STH 35 TO STH 65 (ST CROIX COUNTY) CONTINUOUS (24 HOUR) CLOSURE DIVERSION ROUTE: STH 65 - USH 12	MAY
	Analyzed for 2009 Construction Season

SUMMARY OF TRAFFIC MODEL OUTPUT

SATURDAY EASTBOUND DIRECTION

TIME OF DAY	FLOWS AND CAPACITY IN VEH/HR								AVERAGE SPEEDS IN MPH						
	MAIN		DIVERSION		SITE CAPA CITY	FLOW MAIN ROUTE	FLOW DIVER -TING	TOTAL DIVN FLOW	AV.DEL PER VEH (MINS)	AVERAGE QUEUE (VEH)	MAIN ROUTE		SITE	ALTERNATE ROUTE	
	DEMAND FLOW	PCT HEAVY	NORMAL FLOW	PCT HEAVY							WITHOUT WORK ZN	WITH WORK ZN		WITHOUT WORK ZN	WITH WORK ZN
MID-1 AM	330	0.0	66	0.0	1500	330	0	66	0.45	0	65.8	60.7	44.2	38.9	38.9
1-2 AM	215	0.0	43	0.0	1500	215	0	43	0.44	0	66.0	61.0	44.6	39.2	39.2
2-3 AM	169	0.0	33	0.0	1500	169	0	33	0.44	0	66.1	61.2	44.8	39.3	39.3
3-4 AM	172	0.0	35	0.0	1500	172	0	35	0.44	0	66.1	61.1	44.8	39.3	39.3
4-5 AM	256	0.0	51	0.0	1500	256	0	51	0.45	0	65.9	60.9	44.5	39.1	39.1
5-6 AM	363	0.0	72	0.0	1500	363	0	72	0.46	0	65.7	60.7	44.0	38.9	38.9
6-7 AM	678	0.0	135	0.0	1500	678	0	135	0.49	0	65.1	59.9	42.8	38.1	38.1
7-8 AM	1169	0.0	233	0.0	1499	1169	0	233	0.62	0	64.2	57.8	38.9	36.8	36.8
8-9 AM	1495	0.0	298	0.0	1499	1495	0	298	1.28	9	63.6	51.9	31.7	36.0	36.0
9-10 AM	1792	0.0	358	0.0	1500	1792	0	358	6.67	170	63.0	29.1	30.8	35.3	35.3
10-11 AM	1878	0.0	375	0.0	1499	1523	355	729	13.81	346	62.9	18.4	30.8	35.1	30.7
11A-NOON	1784	0.0	356	0.0	1499	1469	315	671	13.38	334	63.0	18.9	30.8	35.3	31.4
NOON-1PM	1576	0.0	315	0.0	1499	1454	121	437	11.79	291	63.5	20.6	30.8	35.8	34.3
1-2 PM	1420	0.0	284	0.0	1499	1419	2	285	9.85	238	63.7	23.2	30.8	36.2	36.2
2-3 PM	1390	0.0	277	0.0	1499	1390	0	277	6.08	138	63.8	30.7	30.8	36.3	36.3
3-4 PM	1397	0.0	279	0.0	1500	1397	0	279	2.13	34	63.8	46.3	31.9	36.3	36.3
4-5 PM	1350	0.0	270	0.0	1500	1350	0	270	0.83	0	63.8	55.6	34.2	36.4	36.4
5-6 PM	1159	0.0	231	0.0	1500	1159	0	231	0.58	0	64.2	58.2	39.8	36.9	36.9
6-7 PM	1003	0.0	201	0.0	1500	1003	0	201	0.52	0	64.5	59.0	41.7	37.3	37.3
7-8 PM	856	0.0	171	0.0	1500	856	0	171	0.51	0	64.8	59.4	42.2	37.6	37.6
8-9 PM	684	0.0	136	0.0	1500	684	0	136	0.49	0	65.1	59.8	42.8	38.1	38.1
9-10 PM	637	0.0	128	0.0	1500	637	0	128	0.48	0	65.2	59.9	43.0	38.1	38.1
10-11 PM	488	0.0	97	0.0	1500	488	0	97	0.47	0	65.5	60.3	43.5	38.6	38.6
11PM-MID	330	0.0	66	0.0	1500	330	0	66	0.45	0	65.8	60.7	44.2	38.9	38.9

----- SITE BREAKDOWN DELAYS -----	
BREAKDOWN DURATION (MINS)	0
RANGE OF QUEUE DELAY - MIN	0.0
(VEH-H) MAX	0.0
RANGE OF DIVN DELAY - MIN	0.0
(VEH-H) MAX	0.0
AV BREAKDOWNS PER DAY	0.00
AV QUEUE DELAY/DAY (VEH-H)	0.0
AV DIVN DELAY/DAY (VEH-H)	0.0
AV TOTAL DELAY/DAY (VEH-H)	0.0

----- SITE ACCIDENT DELAYS -----	
ACCIDENT DURATION (MINS)	0
RANGE OF QUEUE DELAY - MIN	0.0
(VEH-H) MAX	0.0
RANGE OF DIVN DELAY - MIN	0.0
(VEH-H) MAX	0.0
AV ACCIDENTS PER DAY	0.00
AV QUEUE DELAY/DAY (VEH-H)	0.0
AV DIVN DELAY/DAY (VEH-H)	0.0
AV TOTAL DELAY/DAY (VEH-H)	0.0

AVERAGE ACCIDENT NUMBERS (PIA/DAY)	
MAIN ROUTE WITHOUT WORKS	0.0216
MAIN ROUTE WITH WORKS	0.0194
DIVERSION	0.0623

PIA: Personal Injury Accidents

IMPACTS ON ROAD USERS	
ROAD USER COSTS PER DAY (DOLLARS)	\$32,540
CONGESTED HOURS PER DAY*	0

*Delays Exceeding 15 Minutes

**IH 94: STH 35 TO STH 65 (ST CROIX COUNTY)
CONTINUOUS (24 HOUR) CLOSURE
DIVERSION ROUTE: STH 65 - USH 12**

MAY
Analyzed for 2009
Construction Season

GRAPHICAL REPRESENTATION OF TRAFFIC MODEL INPUT AND OUTPUT
SATURDAY EASTBOUND DIRECTION

