

<b>IH 94: CARMICHAEL RD TO STH 35 S (ST CROIX COUNTY)</b> <b>CONTINUOUS (24 HOUR) CLOSURE</b> <b>DIVERSION ROUTE: CARMICHAEL RD TO STAGELINE RD TO USH 12</b>	<b>MAY</b>
	Analyzed for 2009 Construction Season

**SUMMARY OF TRAFFIC MODEL OUTPUT**

**SATURDAY WESTBOUND DIRECTION**

TIME OF DAY	FLOWS AND CAPACITY IN VEH/HR									AVERAGE SPEEDS IN MPH					
	MAIN ROUTE		ALTERNATE ROUTE		SITE CAPA CITY	FLOW MAIN ROUTE	FLOW DIVER -TING	TOTAL DIVN FLOW	AV.DEL PER VEH (MINS)	AVERAGE QUEUE (VEH)	MAIN ROUTE		ALTERNATE ROUTE		
	DEMAND FLOW	PCT HEAVY	NORMAL FLOW	PCT HEAVY							WITHOUT WORK ZN	WITH WORK ZN	SITE	WITHOUT WORK ZN	WITH WORK ZN
MID-1 AM	526	0.0	35	0.0	3000	526	0	35	0.36	0	70.0	53.0	49.7	19.7	19.7
1-2 AM	422	0.0	28	0.0	3000	422	0	28	0.36	0	70.2	53.0	49.7	19.7	19.7
2-3 AM	376	0.0	25	0.0	3000	376	0	25	0.36	0	70.2	53.0	49.7	19.7	19.7
3-4 AM	350	0.0	23	0.0	3000	350	0	23	0.36	0	70.2	53.0	49.7	19.7	19.7
4-5 AM	427	0.0	28	0.0	3000	427	0	28	0.36	0	70.2	53.0	49.7	19.7	19.7
5-6 AM	538	0.0	36	0.0	3000	538	0	36	0.36	0	70.0	53.0	49.7	19.6	19.6
6-7 AM	747	0.0	50	0.0	3000	747	0	50	0.35	0	69.8	53.0	49.7	19.6	19.6
7-8 AM	1130	0.0	75	0.0	3000	1130	0	75	0.35	0	69.3	52.9	49.7	19.4	19.4
8-9 AM	1568	0.0	104	0.0	3000	1568	0	104	0.34	0	68.8	52.8	49.7	19.3	19.3
9-10 AM	2032	0.0	134	0.0	3000	2032	0	134	0.33	0	68.2	52.8	49.7	19.1	19.1
10-11 AM	2406	0.0	159	0.0	3000	2406	0	159	0.34	0	67.8	52.3	49.2	18.9	18.9
11A-NOON	2462	0.0	163	0.0	3000	2462	0	163	0.38	0	67.7	51.0	47.8	18.9	18.9
NOON-1PM	2449	0.0	162	0.0	3000	2449	0	162	0.37	0	67.7	51.2	48.1	18.9	18.9
1-2 PM	2417	0.0	160	0.0	3000	2417	0	160	0.35	0	67.8	52.0	48.9	18.9	18.9
2-3 PM	2310	0.0	154	0.0	3000	2310	0	154	0.33	0	67.9	52.7	49.7	18.9	18.9
3-4 PM	2304	0.0	153	0.0	3000	2304	0	153	0.33	0	67.9	52.7	49.7	18.9	18.9
4-5 PM	2245	0.0	149	0.0	3000	2245	0	149	0.33	0	67.9	52.7	49.7	18.9	18.9
5-6 PM	1959	0.0	130	0.0	3000	1959	0	130	0.34	0	68.3	52.8	49.7	19.1	19.1
6-7 PM	1688	0.0	111	0.0	3000	1688	0	111	0.34	0	68.6	52.8	49.7	19.2	19.2
7-8 PM	1447	0.0	96	0.0	3000	1447	0	96	0.34	0	68.9	52.8	49.7	19.3	19.3
8-9 PM	1338	0.0	89	0.0	3000	1338	0	89	0.35	0	69.1	52.8	49.7	19.3	19.3
9-10 PM	1110	0.0	74	0.0	3000	1110	0	74	0.35	0	69.4	52.9	49.7	19.4	19.4
10-11 PM	840	0.0	55	0.0	3000	840	0	55	0.35	0	69.7	53.0	49.7	19.5	19.5
11PM-MID	505	0.0	34	0.0	3000	505	0	34	0.36	0	70.1	53.0	49.7	19.7	19.7

*----- SITE BREAKDOWN DELAYS -----*	
BREAKDOWN DURATION (MINS)	0
RANGE OF QUEUE DELAY - MIN	0.0
(VEH-H) MAX	0.0
RANGE OF DIVN DELAY - MIN	0.0
(VEH-H) MAX	0.0
AV BREAKDOWNS PER DAY	0.00
AV QUEUE DELAY/DAY (VEH-H)	0.0
AV DIVN DELAY/DAY (VEH-H)	0.0
AV TOTAL DELAY/DAY (VEH-H)	0.0

*----- SITE ACCIDENT DELAYS -----*	
ACCIDENT DURATION (MINS)	0
RANGE OF QUEUE DELAY - MIN	0.0
(VEH-H) MAX	0.0
RANGE OF DIVN DELAY - MIN	0.0
(VEH-H) MAX	0.0
AV ACCIDENTS PER DAY	0.00
AV QUEUE DELAY/DAY (VEH-H)	0.0
AV DIVN DELAY/DAY (VEH-H)	0.0
AV TOTAL DELAY/DAY (VEH-H)	0.0

AVERAGE ACCIDENT NUMBERS (PIA/DAY)	
MAIN ROUTE WITHOUT WORKS	0.0069
MAIN ROUTE WITH WORKS	0.0047
DIVERSION	0.0068

PIA: Personal Injury Accidents

IMPACTS ON ROAD USERS	
ROAD USER COSTS PER DAY ( DOLLARS)	\$2,859
CONGESTED HOURS PER DAY*	0

\*Delays Exceeding 15 Minutes

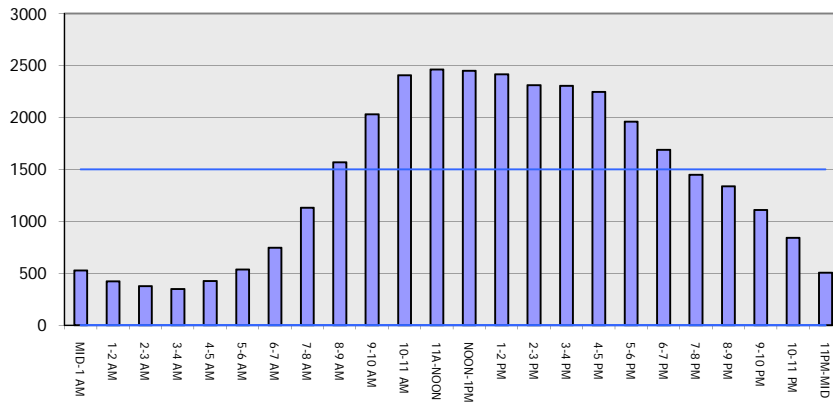
**IH 94: CARMICHAEL RD TO STH 35 S (ST CROIX COUNTY)**  
**CONTINUOUS (24 HOUR) CLOSURE**  
**DIVERSION ROUTE: CARMICHAEL RD TO STAGELINE RD TO USH 12**

**MAY**  
 Analyzed for 2009  
 Construction Season

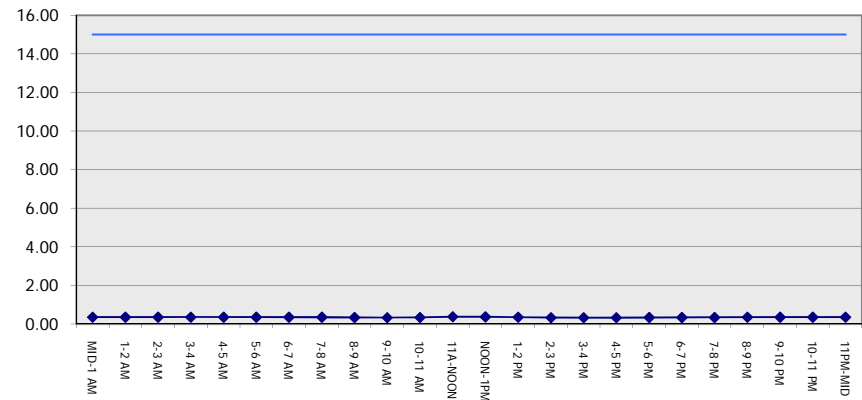
**GRAPHICAL REPRESENTATION OF TRAFFIC MODEL INPUT AND OUTPUT**

**SATURDAY WESTBOUND DIRECTION**

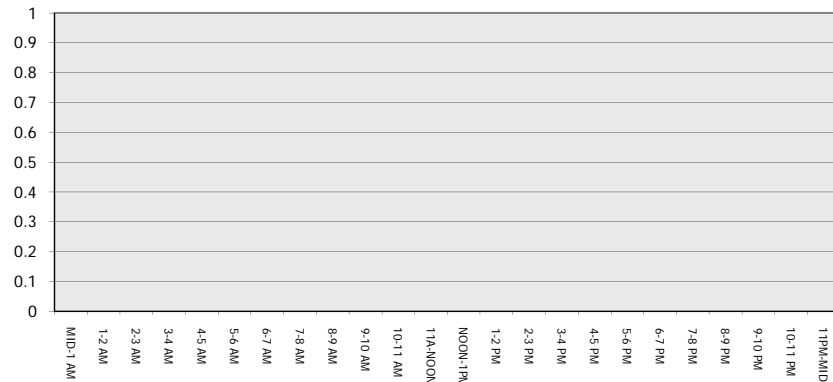
**Main Route - Traffic Demand (Vehicles Per Hour)**



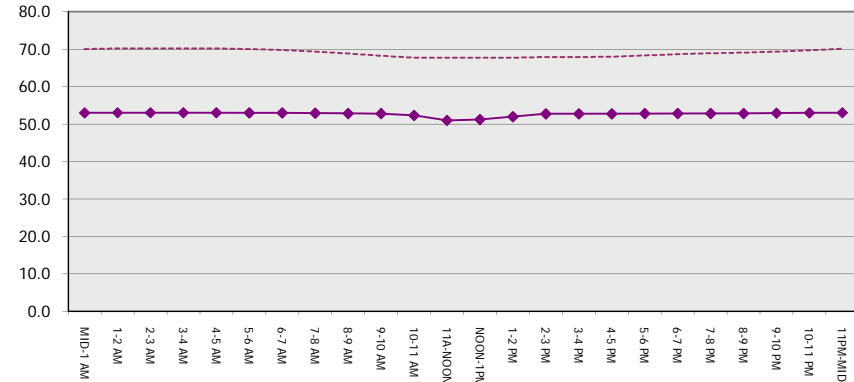
**Main Route Average Delay Per Vehicle (Minutes)**



**Main Route - Average Queue Length (Vehicles)**



**Main Route - Average Speed (MPH)**



<b>IH 94: CARMICHAEL RD TO STH 35 S (ST CROIX COUNTY)</b> <b>CONTINUOUS (24 HOUR) CLOSURE</b> <b>DIVERSION ROUTE: CARMICHAEL RD TO STAGELINE RD TO USH 12</b>	<b>MAY</b>
	Analyzed for 2009 Construction Season

**SUMMARY OF TRAFFIC MODEL OUTPUT**

**SATURDAY EASTBOUND DIRECTION**

TIME OF DAY	FLOWS AND CAPACITY IN VEH/HR								AVERAGE SPEEDS IN MPH						
	MAIN		DIVERSION		SITE CAPA CITY	FLOW MAIN ROUTE	FLOW DIVER -TING	TOTAL DIVN FLOW	AV.DEL PER VEH (MINS)	AVERAGE QUEUE (VEH)	MAIN ROUTE		SITE	ALTERNATE ROUTE	
	DEMAND FLOW	PCT HEAVY	NORMAL FLOW	PCT HEAVY							WITHOUT WORK ZN	WITH WORK ZN		WITHOUT WORK ZN	WITH WORK ZN
MID-1 AM	510	0.0	34	0.0	3000	510	0	34	0.36	0	70.1	53.0	49.7	19.7	19.7
1-2 AM	333	0.0	22	0.0	3000	333	0	22	0.36	0	70.2	53.0	49.7	19.7	19.7
2-3 AM	263	0.0	17	0.0	3000	263	0	17	0.36	0	70.2	53.0	49.7	19.7	19.7
3-4 AM	267	0.0	17	0.0	3000	267	0	17	0.36	0	70.2	53.0	49.7	19.7	19.7
4-5 AM	394	0.0	26	0.0	3000	394	0	26	0.36	0	70.2	53.0	49.7	19.7	19.7
5-6 AM	561	0.0	37	0.0	3000	561	0	37	0.36	0	70.0	53.0	49.7	19.6	19.6
6-7 AM	1048	0.0	69	0.0	3000	1048	0	69	0.35	0	69.4	52.9	49.7	19.4	19.4
7-8 AM	1806	0.0	120	0.0	3000	1806	0	120	0.34	0	68.5	52.8	49.7	19.1	19.1
8-9 AM	2311	0.0	154	0.0	3000	2311	0	154	0.33	0	67.9	52.7	49.7	18.9	18.9
9-10 AM	2770	0.0	184	0.0	3000	2770	0	184	0.58	0	67.3	44.8	41.1	18.8	18.8
10-11 AM	2904	0.0	193	0.0	3000	2904	0	193	0.67	0	67.1	42.7	38.8	18.7	18.7
11A-NOON	2757	0.0	183	0.0	3000	2757	0	183	0.57	0	67.3	45.1	41.4	18.8	18.8
NOON-1PM	2435	0.0	161	0.0	3000	2435	0	161	0.36	0	67.7	51.6	48.4	18.9	18.9
1-2 PM	2196	0.0	146	0.0	3000	2196	0	146	0.33	0	68.0	52.7	49.7	18.9	18.9
2-3 PM	2148	0.0	143	0.0	3000	2148	0	143	0.33	0	68.1	52.7	49.7	19.0	19.0
3-4 PM	2159	0.0	143	0.0	3000	2159	0	143	0.33	0	68.1	52.7	49.7	19.0	19.0
4-5 PM	2087	0.0	138	0.0	3000	2087	0	138	0.33	0	68.1	52.8	49.7	19.0	19.0
5-6 PM	1792	0.0	119	0.0	3000	1792	0	119	0.34	0	68.5	52.8	49.7	19.1	19.1
6-7 PM	1551	0.0	103	0.0	3000	1551	0	103	0.34	0	68.8	52.8	49.7	19.3	19.3
7-8 PM	1323	0.0	88	0.0	3000	1323	0	88	0.35	0	69.1	52.9	49.7	19.3	19.3
8-9 PM	1056	0.0	70	0.0	3000	1056	0	70	0.35	0	69.4	52.9	49.7	19.4	19.4
9-10 PM	985	0.0	65	0.0	3000	985	0	65	0.35	0	69.5	52.9	49.7	19.5	19.5
10-11 PM	754	0.0	50	0.0	3000	754	0	50	0.35	0	69.8	53.0	49.7	19.6	19.6
11PM-MID	510	0.0	34	0.0	3000	510	0	34	0.36	0	70.1	53.0	49.7	19.7	19.7

*----- SITE BREAKDOWN DELAYS -----*	
BREAKDOWN DURATION (MINS)	0
RANGE OF QUEUE DELAY - MIN	0.0
(VEH-H) MAX	0.0
RANGE OF DIVN DELAY - MIN	0.0
(VEH-H) MAX	0.0
AV BREAKDOWNS PER DAY	0.00
AV QUEUE DELAY/DAY (VEH-H)	0.0
AV DIVN DELAY/DAY (VEH-H)	0.0
AV TOTAL DELAY/DAY (VEH-H)	0.0

*----- SITE ACCIDENT DELAYS -----*	
ACCIDENT DURATION (MINS)	0
RANGE OF QUEUE DELAY - MIN	0.0
(VEH-H) MAX	0.0
RANGE OF DIVN DELAY - MIN	0.0
(VEH-H) MAX	0.0
AV ACCIDENTS PER DAY	0.00
AV QUEUE DELAY/DAY (VEH-H)	0.0
AV DIVN DELAY/DAY (VEH-H)	0.0
AV TOTAL DELAY/DAY (VEH-H)	0.0

AVERAGE ACCIDENT NUMBERS (PIA/DAY)	
MAIN ROUTE WITHOUT WORKS	0.0072
MAIN ROUTE WITH WORKS	0.0049
DIVERSION	0.0071

PIA: Personal Injury Accidents

IMPACTS ON ROAD USERS	
ROAD USER COSTS PER DAY ( DOLLARS)	\$3,480
CONGESTED HOURS PER DAY*	0

\*Delays Exceeding 15 Minutes

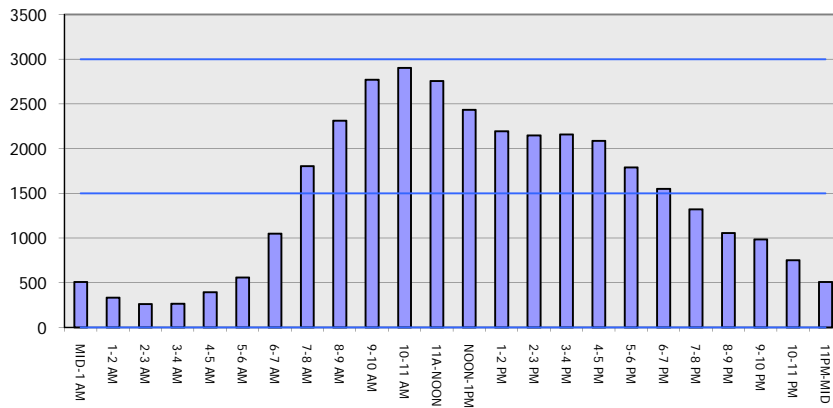
**IH 94: CARMICHAEL RD TO STH 35 S (ST CROIX COUNTY)**  
**CONTINUOUS (24 HOUR) CLOSURE**  
**DIVERSION ROUTE: CARMICHAEL RD TO STAGELINE RD TO USH 12**

**MAY**  
 Analyzed for 2009  
 Construction Season

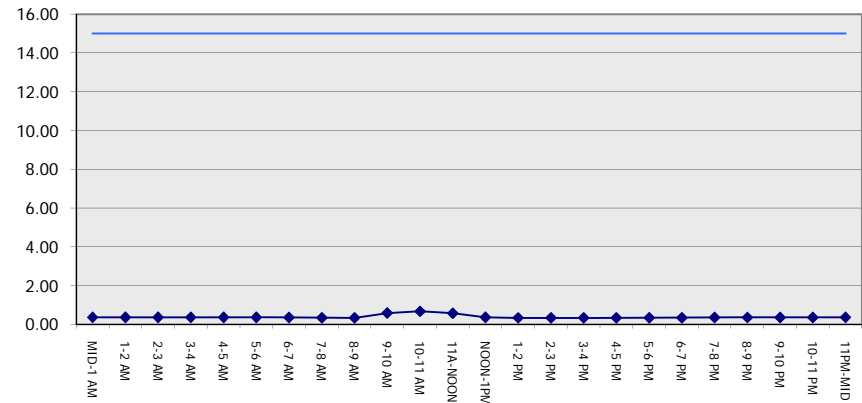
**GRAPHICAL REPRESENTATION OF TRAFFIC MODEL INPUT AND OUTPUT**

**SATURDAY EASTBOUND DIRECTION**

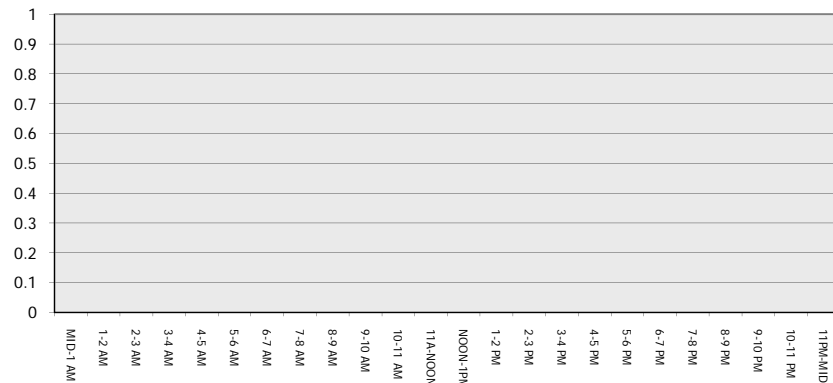
**Main Route - Traffic Demand (Vehicles Per Hour)**



**Main Route Average Delay Per Vehicle (Minutes)**



**Main Route - Average Queue Length (Vehicles)**



**Main Route - Average Speed (MPH)**

