

<b>IH 94: CARMICHAEL RD TO STH 35 S (ST CROIX COUNTY)</b> <b>CONTINUOUS (24 HOUR) 2 LANE CLOSURE</b> <b>DIVERSION ROUTE: CARMICHAEL RD - STAGELINE RD - USH 12</b>	<b>MAY</b>
	Analyzed for 2009 Construction Season

**SUMMARY OF TRAFFIC MODEL OUTPUT**

MON-THUR                      WESTBOUND DIRECTION

TIME OF DAY	FLOWS AND CAPACITY IN VEH/HR							AVERAGE SPEEDS IN MPH							
	MAIN ROUTE		ALTERNATE ROUTE		SITE CAPA CITY	FLOW MAIN ROUTE	FLOW DIVER -TING	TOTAL DIVN FLOW	AV.DEL PER VEH (MINS)	AVERAGE QUEUE (VEH)	MAIN ROUTE		ALTERNATE ROUTE		
	DEMAND FLOW	PCT HEAVY	NORMAL FLOW	PCT HEAVY							WITHOUT WORK ZN	WITH WORK ZN	SITE	WITHOUT WORK ZN	WITH WORK ZN
MID-1 AM	430	0.0	28	0.0	1500	430	0	28	0.53	0	70.2	47.6	43.8	19.7	19.7
1-2 AM	372	0.0	25	0.0	1500	372	0	25	0.52	0	70.2	47.8	44.0	19.7	19.7
2-3 AM	397	0.0	26	0.0	1500	397	0	26	0.52	0	70.2	47.8	43.9	19.7	19.7
3-4 AM	568	0.0	38	0.0	1500	568	0	38	0.54	0	70.0	47.1	43.2	19.6	19.6
4-5 AM	1046	0.0	69	0.0	1499	1046	0	69	0.63	0	69.4	44.3	40.4	19.4	19.4
5-6 AM	1738	0.0	115	0.0	1499	1735	3	118	3.76	91	68.6	16.7	30.8	19.2	19.5
6-7 AM	1900	0.0	125	0.0	1499	1458	443	568	8.52	194	68.4	9.5	30.8	19.1	17.3
7-8 AM	1866	0.0	123	0.0	1499	1492	375	498	8.27	187	68.4	9.6	30.8	19.1	17.8
8-9 AM	1675	0.0	111	0.0	1499	1483	191	303	7.62	170	68.7	10.1	30.8	19.2	18.9
9-10 AM	1686	0.0	111	0.0	1500	1504	182	294	7.59	170	68.6	10.2	30.8	19.2	18.9
10-11 AM	1750	0.0	116	0.0	1500	1506	244	359	7.80	175	68.6	10.0	30.8	19.1	18.5
11A-NOON	1818	0.0	120	0.0	1500	1507	311	431	8.03	181	68.5	9.8	30.8	19.1	18.1
NOON-1PM	1920	0.0	128	0.0	1500	1512	408	536	8.40	191	68.4	9.6	30.8	19.1	17.5
1-2 PM	2100	0.0	140	0.0	1500	1520	580	719	9.12	210	68.1	9.1	30.8	19.0	16.5
2-3 PM	2181	0.0	145	0.0	1499	1510	672	817	9.54	221	68.0	8.8	30.8	19.0	16.0
3-4 PM	2329	0.0	155	0.0	1500	1520	809	964	<b>10.26</b>	240	67.8	8.4	30.8	18.9	15.1
4-5 PM	2353	0.0	156	0.0	1500	1494	859	1015	<b>10.53</b>	247	67.8	8.3	30.8	18.9	14.8
5-6 PM	2026	0.0	134	0.0	1499	1454	572	706	9.07	209	68.2	9.1	30.8	19.1	16.6
6-7 PM	1737	0.0	115	0.0	1500	1474	263	378	7.86	177	68.6	9.9	30.8	19.2	18.4
7-8 PM	1490	0.0	98	0.0	1500	1458	32	130	6.86	151	68.9	10.9	30.8	19.3	19.8
8-9 PM	1307	0.0	87	0.0	1499	1307	0	87	2.15	52	69.1	24.0	33.7	19.3	19.4
9-10 PM	1049	0.0	69	0.0	1500	1049	0	69	0.59	0	69.4	45.5	41.5	19.4	19.4
10-11 PM	789	0.0	52	0.0	1500	789	0	52	0.56	0	69.7	46.3	42.4	19.6	19.6
11PM-MID	520	0.0	35	0.0	1500	520	0	35	0.54	0	70.1	47.3	43.4	19.7	19.7

*----- SITE BREAKDOWN DELAYS -----*	
BREAKDOWN DURATION (MINS)	0
RANGE OF QUEUE DELAY - MIN (VEH-H) MAX	0.0
RANGE OF DIVN DELAY - MIN (VEH-H) MAX	0.0
AV BREAKDOWNS PER DAY	0.00
AV QUEUE DELAY/DAY (VEH-H)	0.0
AV DIVN DELAY/DAY (VEH-H)	0.0
AV TOTAL DELAY/DAY (VEH-H)	0.0

*----- SITE ACCIDENT DELAYS -----*	
ACCIDENT DURATION (MINS)	0
RANGE OF QUEUE DELAY - MIN (VEH-H) MAX	0.0
RANGE OF DIVN DELAY - MIN (VEH-H) MAX	0.0
AV ACCIDENTS PER DAY	0.00
AV QUEUE DELAY/DAY (VEH-H)	0.0
AV DIVN DELAY/DAY (VEH-H)	0.0
AV TOTAL DELAY/DAY (VEH-H)	0.0

AVERAGE ACCIDENT NUMBERS (PIA/DAY)	
MAIN ROUTE WITHOUT WORKS	0.0072
MAIN ROUTE WITH WORKS	0.0041
DIVERSION	0.0252

PIA: Personal Injury Accidents

IMPACTS ON ROAD USERS	
ROAD USER COSTS PER DAY ( DOLLARS)	\$57,161
CONGESTED HOURS PER DAY*	0

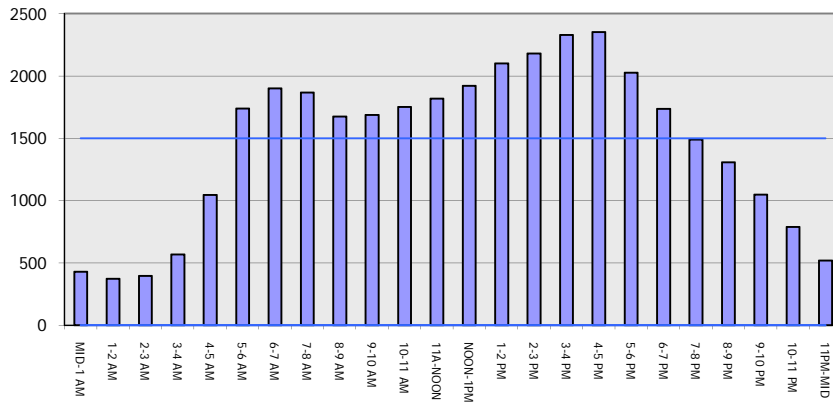
\*Delays Exceeding 15 Minutes

**IH 94: CARMICHAEL RD TO STH 35 S (ST CROIX COUNTY)**  
**CONTINUOUS (24 HOUR) 2 LANE CLOSURE**  
**DIVERSION ROUTE: CARMICHAEL RD - STAGELINE RD - USH 12**

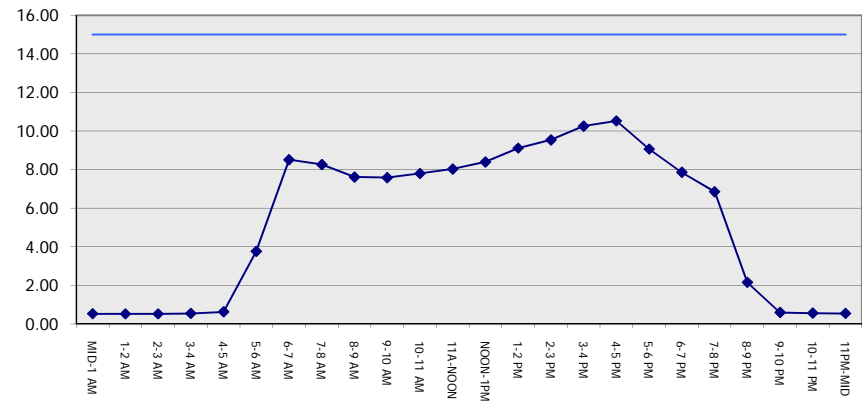
**MAY**  
 Analyzed for 2009  
 Construction Season

**GRAPHICAL REPRESENTATION OF TRAFFIC MODEL INPUT AND OUTPUT**  
**MON-THUR WESTBOUND DIRECTION**

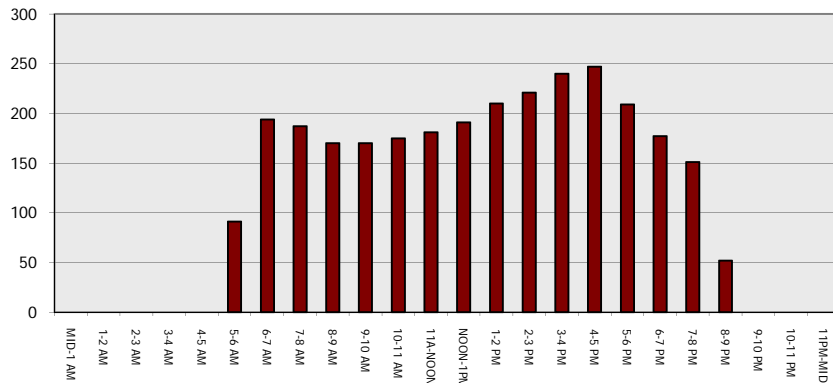
**Main Route - Traffic Demand (Vehicles Per Hour)**



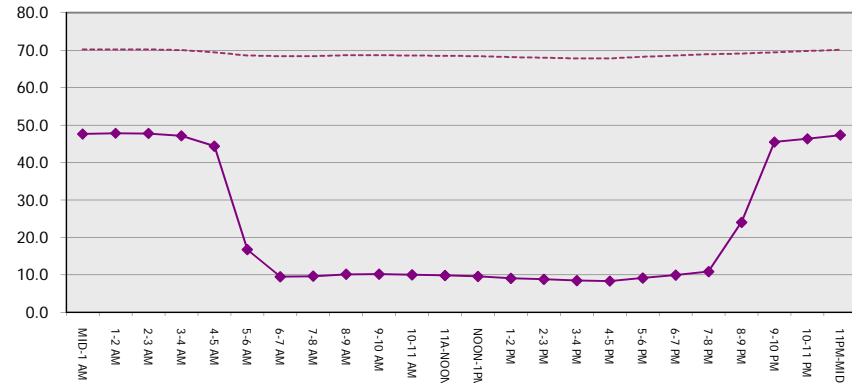
**Main Route Average Delay Per Vehicle (Minutes)**



**Main Route - Average Queue Length (Vehicles)**



**Main Route - Average Speed (MPH)**



<b>IH 94: CARMICHAEL RD TO STH 35 S (ST CROIX COUNTY)</b> <b>CONTINUOUS (24 HOUR) 2 LANE CLOSURE</b> <b>DIVERSION ROUTE: CARMICHAEL RD - STAGELINE RD - USH 12</b>	<b>MAY</b>
	Analyzed for 2009 Construction Season

**SUMMARY OF TRAFFIC MODEL OUTPUT**

MON-THUR                      EASTBOUND DIRECTION

TIME OF DAY	FLOWS AND CAPACITY IN VEH/HR								AVERAGE SPEEDS IN MPH						
	MAIN		DIVERSION		SITE CAPA CITY	FLOW MAIN ROUTE	FLOW DIVER -TING	TOTAL DIVN FLOW	AV.DEL PER VEH (MINS)	AVERAGE QUEUE (VEH)	MAIN ROUTE		SITE	ALTERNATE ROUTE	
	DEMAND FLOW	PCT HEAVY	NORMAL FLOW	PCT HEAVY							WITHOUT WORK ZN	WITH WORK ZN		WITHOUT WORK ZN	WITH WORK ZN
MID-1 AM	398	0.0	26	0.0	1500	398	0	26	0.52	0	70.2	47.8	43.9	19.7	19.7
1-2 AM	284	0.0	18	0.0	1500	284	0	18	0.51	0	70.2	48.2	44.3	19.7	19.7
2-3 AM	248	0.0	16	0.0	1500	248	0	16	0.50	0	70.2	48.3	44.5	19.7	19.7
3-4 AM	286	0.0	19	0.0	1500	286	0	19	0.51	0	70.2	48.1	44.3	19.7	19.7
4-5 AM	429	0.0	28	0.0	1500	429	0	28	0.53	0	70.2	47.6	43.8	19.7	19.7
5-6 AM	747	0.0	50	0.0	1500	747	0	50	0.56	0	69.8	46.5	42.6	19.6	19.6
6-7 AM	1256	0.0	83	0.0	1499	1256	0	83	0.77	0	69.2	41.0	36.9	19.4	19.4
7-8 AM	1481	0.0	98	0.0	1499	1481	0	98	1.18	3	68.9	33.7	31.5	19.3	19.3
8-9 AM	1642	0.0	109	0.0	1500	1642	0	109	3.45	71	68.7	17.4	30.8	19.2	19.4
9-10 AM	1943	0.0	129	0.0	1499	1544	399	527	8.37	190	68.3	9.6	30.8	19.1	17.6
10-11 AM	2032	0.0	134	0.0	1499	1505	527	661	8.88	204	68.2	9.3	30.8	19.1	16.8
11A-NOON	2020	0.0	134	0.0	1499	1498	522	656	8.86	203	68.2	9.3	30.8	19.1	16.8
NOON-1PM	2043	0.0	135	0.0	1500	1505	539	674	8.93	205	68.2	9.2	30.8	19.0	16.8
1-2 PM	2157	0.0	143	0.0	1500	1517	640	783	9.39	217	68.1	8.9	30.8	19.0	16.1
2-3 PM	2343	0.0	156	0.0	1500	1530	813	969	10.29	241	67.8	8.4	30.8	18.9	15.1
3-4 PM	2634	0.0	174	0.0	1500	1545	1090	1264	12.07	288	67.4	7.7	30.8	18.8	13.5
4-5 PM	2475	0.0	164	0.0	1499	1455	1020	1184	11.53	274	67.7	7.9	30.8	18.9	13.9
5-6 PM	2074	0.0	137	0.0	1499	1444	630	767	9.33	216	68.2	8.9	30.8	19.0	16.2
6-7 PM	1807	0.0	120	0.0	1500	1475	332	452	8.11	183	68.5	9.7	30.8	19.1	18.0
7-8 PM	1493	0.0	98	0.0	1500	1442	50	149	6.83	150	68.9	10.9	30.8	19.3	19.7
8-9 PM	1169	0.0	78	0.0	1500	1169	0	78	1.19	25	69.3	33.7	38.2	19.4	19.4
9-10 PM	1002	0.0	66	0.0	1500	1002	0	66	0.59	0	69.5	45.6	41.7	19.4	19.4
10-11 PM	802	0.0	53	0.0	1500	802	0	53	0.57	0	69.7	46.3	42.4	19.6	19.6
11PM-MID	513	0.0	34	0.0	1500	513	0	34	0.53	0	70.1	47.3	43.5	19.7	19.7

*----- SITE BREAKDOWN DELAYS -----*	
BREAKDOWN DURATION (MINS)	0
RANGE OF QUEUE DELAY - MIN	0.0
(VEH-H) MAX	0.0
RANGE OF DIVN DELAY - MIN	0.0
(VEH-H) MAX	0.0
AV BREAKDOWNS PER DAY	0.00
AV QUEUE DELAY/DAY (VEH-H)	0.0
AV DIVN DELAY/DAY (VEH-H)	0.0
AV TOTAL DELAY/DAY (VEH-H)	0.0

*----- SITE ACCIDENT DELAYS -----*	
ACCIDENT DURATION (MINS)	0
RANGE OF QUEUE DELAY - MIN	0.0
(VEH-H) MAX	0.0
RANGE OF DIVN DELAY - MIN	0.0
(VEH-H) MAX	0.0
AV ACCIDENTS PER DAY	0.00
AV QUEUE DELAY/DAY (VEH-H)	0.0
AV DIVN DELAY/DAY (VEH-H)	0.0
AV TOTAL DELAY/DAY (VEH-H)	0.0

AVERAGE ACCIDENT NUMBERS (PIA/DAY)	
MAIN ROUTE WITHOUT WORKS	0.0069
MAIN ROUTE WITH WORKS	0.0038
DIVERSION	0.0267

PIA: Personal Injury Accidents

IMPACTS ON ROAD USERS	
ROAD USER COSTS PER DAY ( DOLLARS)	\$54,121
CONGESTED HOURS PER DAY*	0

\*Delays Exceeding 15 Minutes

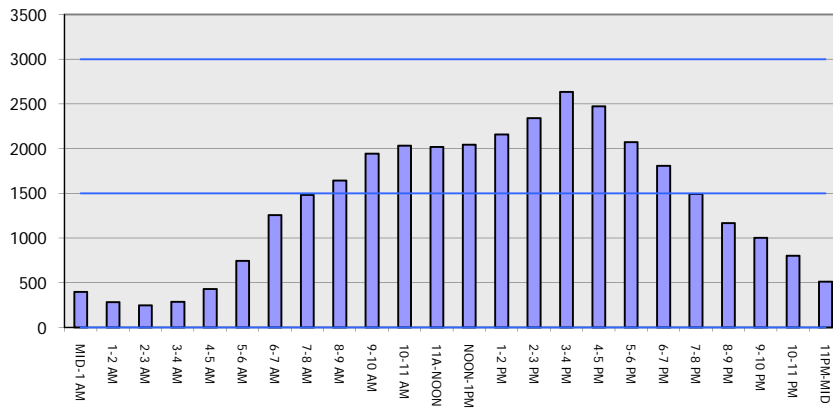
**IH 94: CARMICHAEL RD TO STH 35 S (ST CROIX COUNTY)  
 CONTINUOUS (24 HOUR) 2 LANE CLOSURE  
 DIVERSION ROUTE: CARMICHAEL RD - STAGELINE RD - USH 12**

**MAY**  
 Analyzed for 2009  
 Construction Season

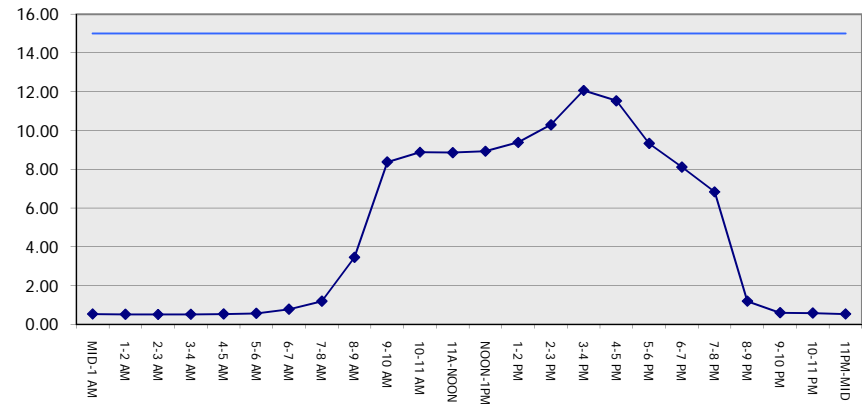
**GRAPHICAL REPRESENTATION OF TRAFFIC MODEL INPUT AND OUTPUT**

**MON-THUR EASTBOUND DIRECTION**

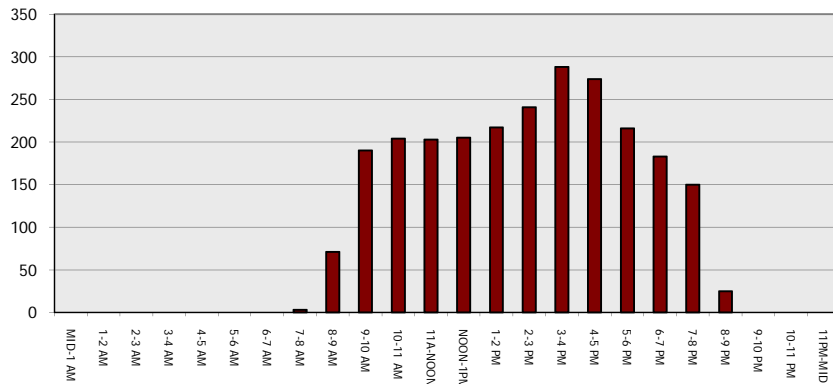
**Main Route - Traffic Demand (Vehicles Per Hour)**



**Main Route Average Delay Per Vehicle (Minutes)**



**Main Route - Average Queue Length (Vehicles)**



**Main Route - Average Speed (MPH)**

