

IH 94: CARMICHAEL RD TO STH 35 S (ST CROIX COUNTY) CONTINUOUS (24 HOUR) 2 LANE CLOSURE DIVERSION ROUTE: CARMICHAEL RD - STAGELINE RD - USH 12	MAY
	Analyzed for 2009 Construction Season

SUMMARY OF TRAFFIC MODEL OUTPUT

FRIDAY WESTBOUND DIRECTION

TIME OF DAY	FLOWS AND CAPACITY IN VEH/HR								AVERAGE SPEEDS IN MPH						
	MAIN ROUTE		ALTERNATE ROUTE		SITE CAPA CITY	FLOW MAIN ROUTE	FLOW DIVER -TING	TOTAL DIVN FLOW	AV.DEL PER VEH (MINS)	AVERAGE QUEUE (VEH)	MAIN ROUTE		ALTERNATE ROUTE		
	DEMAND FLOW	PCT HEAVY	NORMAL FLOW	PCT HEAVY							WITHOUT WORK ZN	WITH WORK ZN	SITE	WITHOUT WORK ZN	WITH WORK ZN
MID-1 AM	526	0.0	35	0.0	1500	526	0	35	0.54	0	70.0	47.3	43.4	19.7	19.7
1-2 AM	490	0.0	32	0.0	1500	490	0	32	0.53	0	70.1	47.4	43.5	19.7	19.7
2-3 AM	476	0.0	31	0.0	1500	476	0	31	0.53	0	70.1	47.4	43.6	19.7	19.7
3-4 AM	540	0.0	36	0.0	1500	540	0	36	0.54	0	70.0	47.3	43.3	19.6	19.6
4-5 AM	884	0.0	58	0.0	1500	884	0	58	0.57	0	69.6	46.0	42.1	19.5	19.5
5-6 AM	1518	0.0	101	0.0	1499	1518	0	101	1.54	20	68.9	29.2	32.2	19.3	19.3
6-7 AM	2030	0.0	134	0.0	1500	1630	400	534	8.20	190	68.2	9.7	30.8	19.1	17.5
7-8 AM	2017	0.0	134	0.0	1500	1490	527	661	8.88	204	68.2	9.3	30.8	19.1	16.8
8-9 AM	1850	0.0	122	0.0	1499	1484	366	488	8.23	187	68.4	9.7	30.8	19.1	17.8
9-10 AM	1913	0.0	127	0.0	1500	1510	403	530	8.38	190	68.4	9.6	30.8	19.1	17.6
10-11 AM	1985	0.0	132	0.0	1500	1510	475	607	8.67	198	68.2	9.4	30.8	19.1	17.1
11A-NOON	2164	0.0	144	0.0	1500	1525	639	783	9.39	217	68.1	8.9	30.8	19.0	16.1
NOON-1PM	2422	0.0	160	0.0	1500	1541	882	1042	10.68	251	67.8	8.3	30.8	18.9	14.7
1-2 PM	2706	0.0	180	0.0	1500	1553	1153	1333	12.59	302	67.4	7.6	30.8	18.8	13.0
2-3 PM	2791	0.0	185	0.0	1499	1519	1272	1457	13.65	329	67.3	7.2	30.8	18.8	12.3
3-4 PM	2960	0.0	196	0.0	1500	1548	1412	1608+	15.18	370	67.1	6.8	30.8	18.6	11.4
4-5 PM	2992	0.0	198	0.0	1499	1504	1488	1686+	16.10	394	67.0	6.6	30.8	18.6	11.0
5-6 PM	2864	0.0	189	0.0	1499	1450	1414	1604+	15.15	369	67.2	6.8	30.8	18.7	11.5
6-7 PM	2495	0.0	166	0.0	1499	1411	1084	1250	12.01	287	67.6	7.8	30.8	18.8	13.5
7-8 PM	2070	0.0	137	0.0	1500	1446	624	761	9.31	215	68.2	9.0	30.8	19.0	16.3
8-9 PM	1885	0.0	125	0.0	1500	1483	402	527	8.37	190	68.4	9.6	30.8	19.1	17.6
9-10 PM	1602	0.0	106	0.0	1500	1474	128	234	7.42	165	68.7	10.3	30.8	19.2	19.3
10-11 PM	1282	0.0	85	0.0	1499	1282	0	85	2.72	77	69.1	20.9	34.1	19.3	19.6
11PM-MID	836	0.0	55	0.0	1500	836	0	55	0.57	0	69.7	46.2	42.3	19.5	19.5

+ INDICATES DIVERSION FLOW EXCEEDS USER-SPECIFIED WARNING LIMIT

----- SITE BREAKDOWN DELAYS -----	
BREAKDOWN DURATION (MINS)	0
RANGE OF QUEUE DELAY - MIN (VEH-H) MAX	0.0
RANGE OF DIVN DELAY - MIN (VEH-H) MAX	0.0
AV BREAKDOWNS PER DAY	0.00
AV QUEUE DELAY/DAY (VEH-H)	0.0
AV DIVN DELAY/DAY (VEH-H)	0.0
AV TOTAL DELAY/DAY (VEH-H)	0.0

----- SITE ACCIDENT DELAYS -----	
ACCIDENT DURATION (MINS)	0
RANGE OF QUEUE DELAY - MIN (VEH-H) MAX	0.0
RANGE OF DIVN DELAY - MIN (VEH-H) MAX	0.0
AV ACCIDENTS PER DAY	0.00
AV QUEUE DELAY/DAY (VEH-H)	0.0
AV DIVN DELAY/DAY (VEH-H)	0.0
AV TOTAL DELAY/DAY (VEH-H)	0.0

AVERAGE ACCIDENT NUMBERS (PIA/DAY)	
MAIN ROUTE WITHOUT WORKS	0.0089
MAIN ROUTE WITH WORKS	0.0043
DIVERSION	0.0474

PIA: Personal Injury Accidents

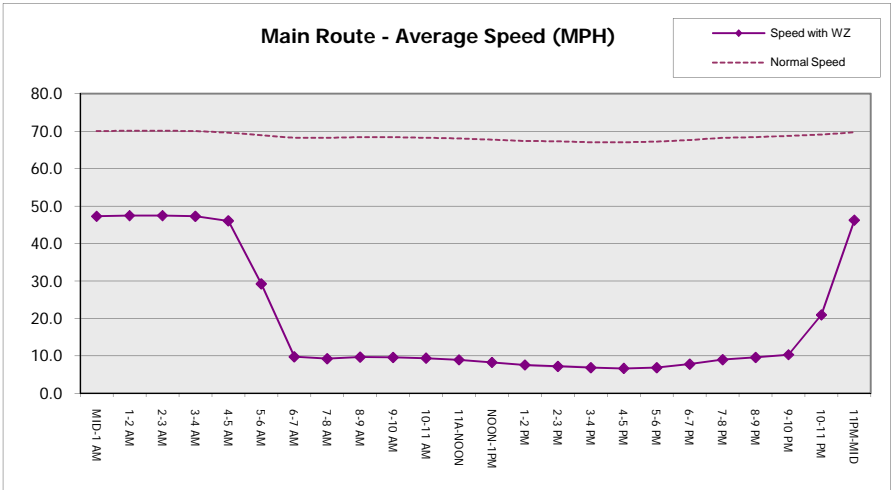
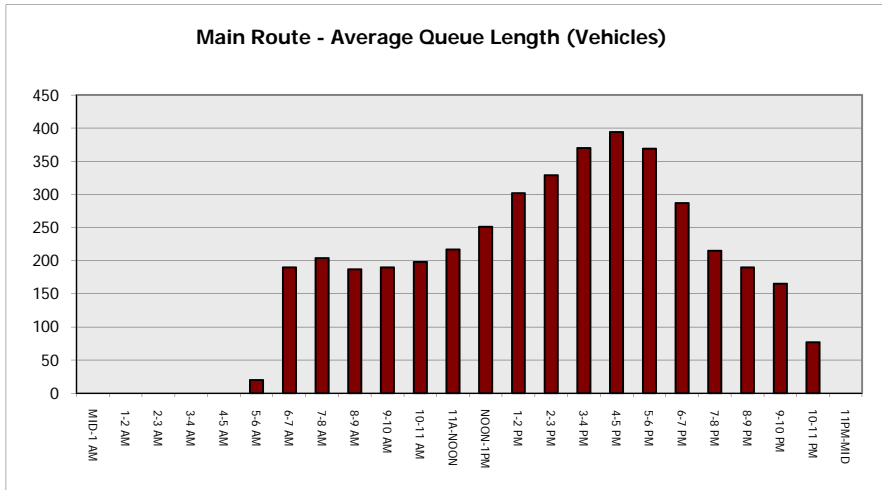
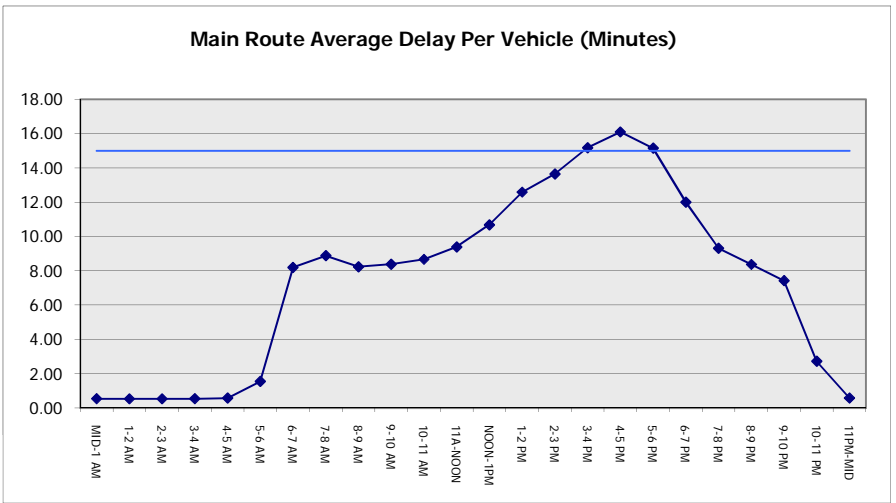
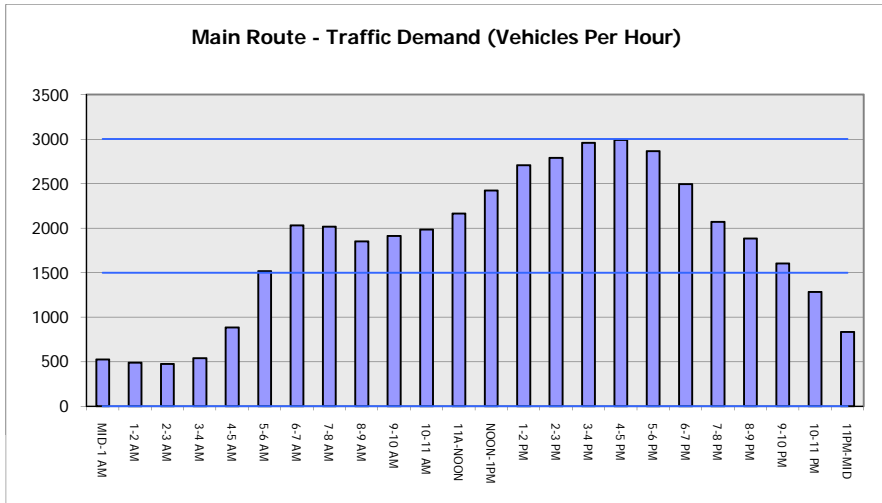
IMPACTS ON ROAD USERS	
ROAD USER COSTS PER DAY (DOLLARS)	\$103,954
CONGESTED HOURS PER DAY*	3

*Delays Exceeding 15 Minutes

**IH 94: CARMICHAEL RD TO STH 35 S (ST CROIX COUNTY)
 CONTINUOUS (24 HOUR) 2 LANE CLOSURE
 DIVERSION ROUTE: CARMICHAEL RD - STAGELINE RD - USH 12**

MAY
 Analyzed for 2009
 Construction Season

GRAPHICAL REPRESENTATION OF TRAFFIC MODEL INPUT AND OUTPUT
FRIDAY WESTBOUND DIRECTION



IH 94: CARMICHAEL RD TO STH 35 S (ST CROIX COUNTY) CONTINUOUS (24 HOUR) 2 LANE CLOSURE DIVERSION ROUTE: CARMICHAEL RD - STAGELINE RD - USH 12	MAY
	Analyzed for 2009 Construction Season

SUMMARY OF TRAFFIC MODEL OUTPUT

FRIDAY EASTBOUND DIRECTION

TIME OF DAY	FLOWS AND CAPACITY IN VEH/HR							AVERAGE SPEEDS IN MPH			AVERAGE SPEEDS IN MPH				
	MAIN		DIVERSION		SITE CAPA CITY	FLOW MAIN ROUTE	FLOW DIVER -TING	TOTAL DIVN FLOW	AV.DEL PER VEH (MINS)	AVERAGE QUEUE (VEH)	MAIN ROUTE		ALTERNATE ROUTE		
	DEMAND FLOW	PCT HEAVY	NORMAL FLOW	PCT HEAVY							WITHOUT WORK ZN	WITH WORK ZN	SITE	WITHOUT WORK ZN	WITH WORK ZN
MID-1 AM	508	0.0	34	0.0	1500	508	0	34	0.53	0	70.1	47.3	43.5	19.7	19.7
1-2 AM	329	0.0	22	0.0	1500	329	0	22	0.51	0	70.2	48.0	44.2	19.7	19.7
2-3 AM	322	0.0	22	0.0	1500	322	0	22	0.51	0	70.2	48.0	44.2	19.7	19.7
3-4 AM	313	0.0	21	0.0	1500	313	0	21	0.51	0	70.2	48.1	44.2	19.7	19.7
4-5 AM	466	0.0	31	0.0	1500	466	0	31	0.53	0	70.2	47.5	43.7	19.7	19.7
5-6 AM	723	0.0	48	0.0	1500	723	0	48	0.56	0	69.9	46.6	42.7	19.6	19.6
6-7 AM	1221	0.0	81	0.0	1499	1221	0	81	0.74	0	69.2	41.7	37.7	19.4	19.4
7-8 AM	1829	0.0	121	0.0	1499	1714	116	237	4.79	113	68.4	14.0	30.8	19.1	18.8
8-9 AM	2064	0.0	136	0.0	1499	1507	557	693	9.01	207	68.2	9.1	30.8	19.0	16.6
9-10 AM	2575	0.0	171	0.0	1500	1582	992	1163	11.41	271	67.6	7.9	30.8	18.8	14.0
10-11 AM	2851	0.0	189	0.0	1499	1558	1293	1482	13.89	336	67.2	7.1	30.8	18.7	12.2
11A-NOON	2971	0.0	197	0.0	1499	1535	1436	1633+	15.47	377	67.1	6.8	30.8	18.6	11.3
NOON-1PM	3155	0.0	209	0.0	1499	1503	1653	1861+	16.38	401	66.8	6.6	30.8	18.6	10.9
1-2 PM	3629	0.0	240	0.0	1499	1500	2129	2369+	16.40	402	66.1	6.6	30.8	18.4	10.9
2-3 PM	3657	0.0	242	0.0	1500	1500	2157	2399+	16.40	402	65.9	6.6	30.8	18.4	10.9
3-4 PM	4020	0.0	266	0.0	1500	1500	2520	2786+	16.32	402	63.4	6.6	30.8	18.2	10.9
4-5 PM	4097	0.0	272	0.0	1500	1500	2597	2869+	16.31	402	62.8	6.6	30.8	18.2	10.9
5-6 PM	3934	0.0	261	0.0	1500	1500	2433	2694+	16.34	402	64.0	6.6	30.8	18.3	10.9
6-7 PM	3774	0.0	250	0.0	1500	1500	2274	2524+	16.37	402	65.1	6.6	30.8	18.3	10.9
7-8 PM	2625	0.0	174	0.0	1500	1353	1272	1446	13.67	334	67.4	7.3	30.9	18.8	12.4
8-9 PM	1759	0.0	117	0.0	1500	1410	350	466	8.18	187	68.6	9.7	30.9	19.1	17.9
9-10 PM	1299	0.0	87	0.0	1499	1299	0	87	3.13	85	69.1	19.0	33.5	19.3	19.6
10-11 PM	1068	0.0	70	0.0	1500	1068	0	70	0.59	0	69.4	45.4	41.4	19.4	19.4
11PM-MID	802	0.0	53	0.0	1500	802	0	53	0.57	0	69.7	46.3	42.4	19.6	19.6

+ INDICATES DIVERSION FLOW EXCEEDS USER-SPECIFIED WARNING LIMIT

----- SITE BREAKDOWN DELAYS -----	
BREAKDOWN DURATION (MINS)	0
RANGE OF QUEUE DELAY - MIN	0.0
(VEH-H) MAX	0.0
RANGE OF DIVN DELAY - MIN	0.0
(VEH-H) MAX	0.0
AV BREAKDOWNS PER DAY	0.00
AV QUEUE DELAY/DAY (VEH-H)	0.0
AV DIVN DELAY/DAY (VEH-H)	0.0
AV TOTAL DELAY/DAY (VEH-H)	0.0

----- SITE ACCIDENT DELAYS -----	
ACCIDENT DURATION (MINS)	0
RANGE OF QUEUE DELAY - MIN	0.0
(VEH-H) MAX	0.0
RANGE OF DIVN DELAY - MIN	0.0
(VEH-H) MAX	0.0
AV ACCIDENTS PER DAY	0.00
AV QUEUE DELAY/DAY (VEH-H)	0.0
AV DIVN DELAY/DAY (VEH-H)	0.0
AV TOTAL DELAY/DAY (VEH-H)	0.0

AVERAGE ACCIDENT NUMBERS (PIA/DAY)	
MAIN ROUTE WITHOUT WORKS	0.0103
MAIN ROUTE WITH WORKS	0.0040
DIVERSION	0.0766

PIA: Personal Injury Accidents

IMPACTS ON ROAD USERS	
ROAD USER COSTS PER DAY (DOLLARS)	\$154,875
CONGESTED HOURS PER DAY*	8

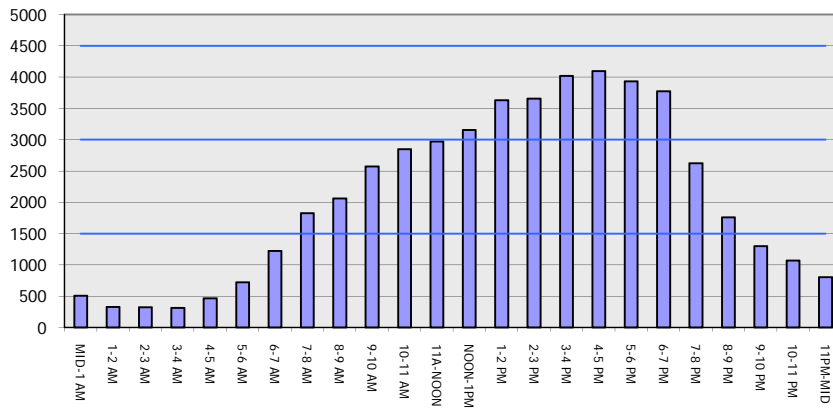
*Delays Exceeding 15 Minutes

IH 94: CARMICHAEL RD TO STH 35 S (ST CROIX COUNTY)
CONTINUOUS (24 HOUR) 2 LANE CLOSURE
DIVERSION ROUTE: CARMICHAEL RD - STAGELINE RD - USH 12

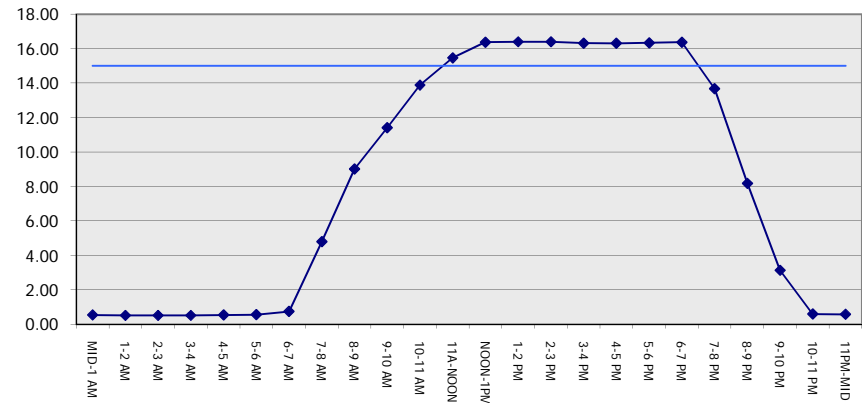
MAY
 Analyzed for 2009
 Construction Season

GRAPHICAL REPRESENTATION OF TRAFFIC MODEL INPUT AND OUTPUT
FRIDAY EASTBOUND DIRECTION

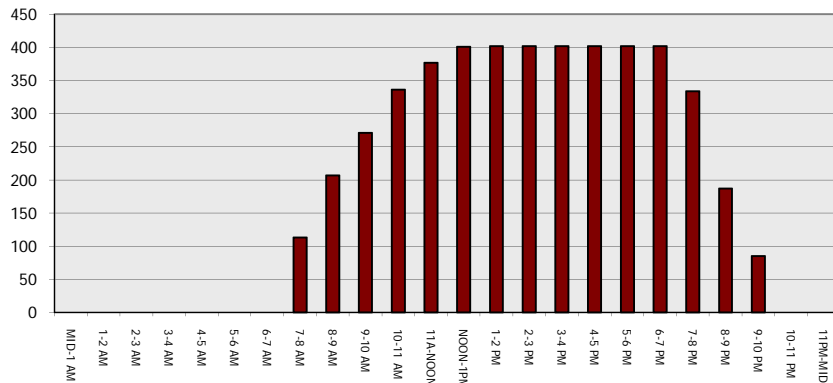
Main Route - Traffic Demand (Vehicles Per Hour)



Main Route Average Delay Per Vehicle (Minutes)



Main Route - Average Queue Length (Vehicles)



Main Route - Average Speed (MPH)

