

IH 94: CARMICHAEL RD TO STH 35 S (ST CROIX COUNTY) CONTINUOUS (24 HOUR) CLOSURE DIVERSION ROUTE: CARMICHAEL RD TO STAGELINE RD TO USH 12	MAY
	Analyzed for 2009 Construction Season

SUMMARY OF TRAFFIC MODEL OUTPUT

FRIDAY WESTBOUND DIRECTION

TIME OF DAY	FLOWS AND CAPACITY IN VEH/HR						AVERAGE SPEEDS IN MPH								
	MAIN ROUTE		ALTERNATE ROUTE		SITE CAPA CITY	FLOW MAIN ROUTE	FLOW DIVER -TING	TOTAL DIVN FLOW	AV.DEL PER VEH (MINS)	AVERAGE QUEUE (VEH)	MAIN ROUTE		ALTERNATE ROUTE		
	DEMAND FLOW	PCT HEAVY	NORMAL FLOW	PCT HEAVY							WITHOUT WORK ZN	WITH WORK ZN	SITE	WITHOUT WORK ZN	WITH WORK ZN
MID-1 AM	526	0.0	35	0.0	3000	526	0	35	0.36	0	70.0	53.0	49.7	19.7	19.7
1-2 AM	490	0.0	32	0.0	3000	490	0	32	0.36	0	70.1	53.0	49.7	19.7	19.7
2-3 AM	476	0.0	31	0.0	3000	476	0	31	0.36	0	70.1	53.0	49.7	19.7	19.7
3-4 AM	540	0.0	36	0.0	3000	540	0	36	0.36	0	70.0	53.0	49.7	19.6	19.6
4-5 AM	884	0.0	58	0.0	3000	884	0	58	0.35	0	69.6	53.0	49.7	19.5	19.5
5-6 AM	1518	0.0	101	0.0	3000	1518	0	101	0.34	0	68.9	52.8	49.7	19.3	19.3
6-7 AM	2030	0.0	134	0.0	3000	2030	0	134	0.33	0	68.2	52.8	49.7	19.1	19.1
7-8 AM	2017	0.0	134	0.0	3000	2017	0	134	0.33	0	68.2	52.8	49.7	19.1	19.1
8-9 AM	1850	0.0	122	0.0	3000	1850	0	122	0.34	0	68.4	52.8	49.7	19.1	19.1
9-10 AM	1913	0.0	127	0.0	3000	1913	0	127	0.34	0	68.4	52.8	49.7	19.1	19.1
10-11 AM	1985	0.0	132	0.0	3000	1985	0	132	0.33	0	68.2	52.8	49.7	19.1	19.1
11A-NOON	2164	0.0	144	0.0	3000	2164	0	144	0.33	0	68.1	52.7	49.7	19.0	19.0
NOON-1PM	2422	0.0	160	0.0	3000	2422	0	160	0.35	0	67.8	51.9	48.7	18.9	18.9
1-2 PM	2706	0.0	180	0.0	3000	2706	0	180	0.54	0	67.4	46.0	42.4	18.8	18.8
2-3 PM	2791	0.0	185	0.0	3000	2791	0	185	0.59	0	67.3	44.5	40.7	18.8	18.8
3-4 PM	2960	0.0	196	0.0	2999	2960	0	196	0.70	0	67.1	41.8	37.9	18.6	18.6
4-5 PM	2992	0.0	198	0.0	2999	2992	0	198	0.73	0	67.0	41.1	37.4	18.6	18.6
5-6 PM	2864	0.0	189	0.0	3000	2864	0	189	0.64	0	67.2	43.3	39.4	18.7	18.7
6-7 PM	2495	0.0	166	0.0	3000	2495	0	166	0.40	0	67.6	50.2	46.9	18.8	18.8
7-8 PM	2070	0.0	137	0.0	3000	2070	0	137	0.33	0	68.2	52.8	49.7	19.0	19.0
8-9 PM	1885	0.0	125	0.0	3000	1885	0	125	0.34	0	68.4	52.8	49.7	19.1	19.1
9-10 PM	1602	0.0	106	0.0	3000	1602	0	106	0.34	0	68.7	52.8	49.7	19.2	19.2
10-11 PM	1282	0.0	85	0.0	3000	1282	0	85	0.35	0	69.1	52.9	49.7	19.3	19.3
11PM-MID	836	0.0	55	0.0	3000	836	0	55	0.35	0	69.7	53.0	49.7	19.5	19.5

----- SITE BREAKDOWN DELAYS -----	
BREAKDOWN DURATION (MINS)	0
RANGE OF QUEUE DELAY - MIN	0.0
(VEH-H) MAX	0.0
RANGE OF DIVN DELAY - MIN	0.0
(VEH-H) MAX	0.0
AV BREAKDOWNS PER DAY	0.00
AV QUEUE DELAY/DAY (VEH-H)	0.0
AV DIVN DELAY/DAY (VEH-H)	0.0
AV TOTAL DELAY/DAY (VEH-H)	0.0

----- SITE ACCIDENT DELAYS -----	
ACCIDENT DURATION (MINS)	0
RANGE OF QUEUE DELAY - MIN	0.0
(VEH-H) MAX	0.0
RANGE OF DIVN DELAY - MIN	0.0
(VEH-H) MAX	0.0
AV ACCIDENTS PER DAY	0.00
AV QUEUE DELAY/DAY (VEH-H)	0.0
AV DIVN DELAY/DAY (VEH-H)	0.0
AV TOTAL DELAY/DAY (VEH-H)	0.0

AVERAGE ACCIDENT NUMBERS (PIA/DAY)	
MAIN ROUTE WITHOUT WORKS	0.0089
MAIN ROUTE WITH WORKS	0.0061
DIVERSION	0.0088

PIA: Personal Injury Accidents

IMPACTS ON ROAD USERS	
ROAD USER COSTS PER DAY (DOLLARS)	\$4,523
CONGESTED HOURS PER DAY*	0

*Delays Exceeding 15 Minutes

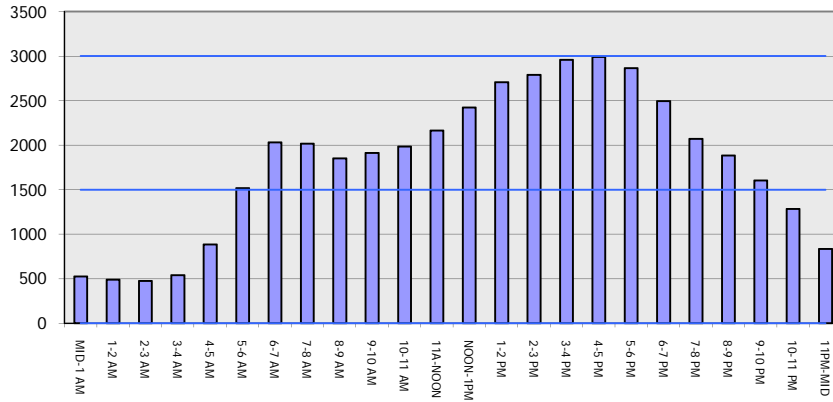
IH 94: CARMICHAEL RD TO STH 35 S (ST CROIX COUNTY)
CONTINUOUS (24 HOUR) CLOSURE
DIVERSION ROUTE: CARMICHAEL RD TO STAGELINE RD TO USH 12

MAY
 Analyzed for 2009
 Construction Season

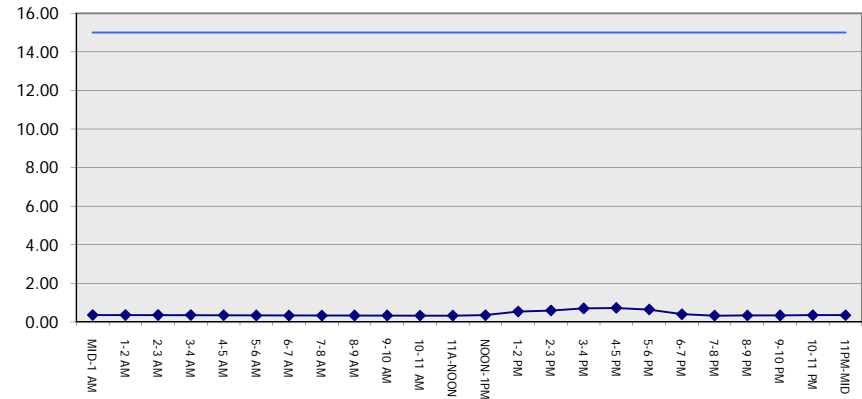
GRAPHICAL REPRESENTATION OF TRAFFIC MODEL INPUT AND OUTPUT

FRIDAY WESTBOUND DIRECTION

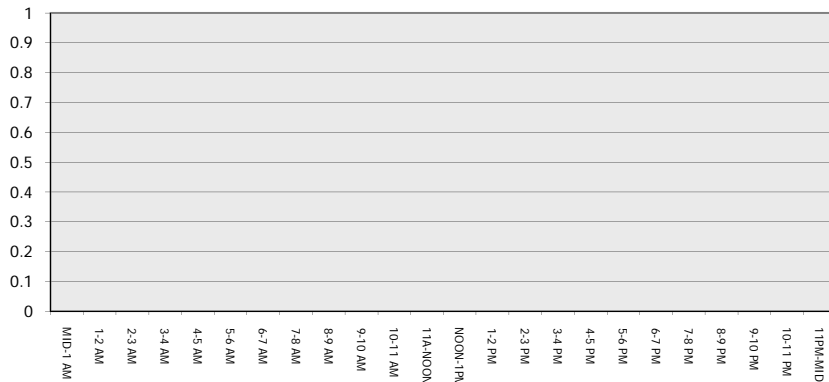
Main Route - Traffic Demand (Vehicles Per Hour)



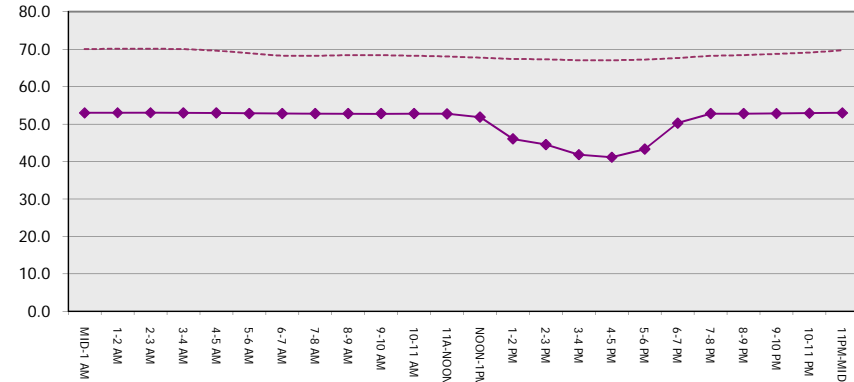
Main Route Average Delay Per Vehicle (Minutes)



Main Route - Average Queue Length (Vehicles)



Main Route - Average Speed (MPH)



IH 94: CARMICHAEL RD TO STH 35 S (ST CROIX COUNTY) CONTINUOUS (24 HOUR) CLOSURE DIVERSION ROUTE: CARMICHAEL RD TO STAGELINE RD TO USH 12	MAY
	Analyzed for 2009 Construction Season

SUMMARY OF TRAFFIC MODEL OUTPUT

FRIDAY EASTBOUND DIRECTION

TIME OF DAY	FLOWS AND CAPACITY IN VEH/HR								AVERAGE SPEEDS IN MPH						
	MAIN		DIVERSION		SITE CAPA CITY	FLOW MAIN ROUTE	FLOW DIVER -TING	TOTAL DIVN FLOW	AV.DEL PER VEH (MINS)	AVERAGE QUEUE (VEH)	MAIN ROUTE		SITE	ALTERNATE ROUTE	
	DEMAND FLOW	PCT HEAVY	NORMAL FLOW	PCT HEAVY							WITHOUT WORK ZN	WITH WORK ZN		WITHOUT WORK ZN	WITH WORK ZN
MID-1 AM	508	0.0	34	0.0	3000	508	0	34	0.36	0	70.1	53.0	49.7	19.7	19.7
1-2 AM	329	0.0	22	0.0	3000	329	0	22	0.36	0	70.2	53.0	49.7	19.7	19.7
2-3 AM	322	0.0	22	0.0	3000	322	0	22	0.36	0	70.2	53.0	49.7	19.7	19.7
3-4 AM	313	0.0	21	0.0	3000	313	0	21	0.36	0	70.2	53.0	49.7	19.7	19.7
4-5 AM	466	0.0	31	0.0	3000	466	0	31	0.36	0	70.2	53.0	49.7	19.7	19.7
5-6 AM	723	0.0	48	0.0	3000	723	0	48	0.35	0	69.9	53.0	49.7	19.6	19.6
6-7 AM	1221	0.0	81	0.0	3000	1221	0	81	0.35	0	69.2	52.9	49.7	19.4	19.4
7-8 AM	1829	0.0	121	0.0	3000	1829	0	121	0.34	0	68.4	52.8	49.7	19.1	19.1
8-9 AM	2064	0.0	136	0.0	3000	2064	0	136	0.33	0	68.2	52.8	49.7	19.0	19.0
9-10 AM	2575	0.0	171	0.0	3000	2575	0	171	0.45	0	67.6	48.6	45.1	18.8	18.8
10-11 AM	2851	0.0	189	0.0	2999	2851	0	189	0.63	0	67.2	43.5	39.7	18.7	18.7
11A-NOON	2971	0.0	197	0.0	2999	2971	0	197	0.73	1	67.1	41.2	37.8	18.6	18.6
NOON-1PM	3155	0.0	209	0.0	3000	3155	0	209	1.68	61	66.8	27.8	37.3	18.6	18.7
1-2 PM	3629	0.0	240	0.0	3000	3362	267	507	7.65	395	66.1	12.5	37.3	18.4	19.2
2-3 PM	3657	0.0	242	0.0	2999	3012	645	887	10.12	519	65.9	11.1	37.3	18.4	17.5
3-4 PM	4020	0.0	266	0.0	3000	3126	894	1160	11.62	607	63.4	10.4	37.3	18.2	16.0
4-5 PM	4097	0.0	272	0.0	2999	3026	1072	1343	12.90	678	62.8	10.0	37.3	18.2	15.1
5-6 PM	3934	0.0	261	0.0	2999	2929	1004	1265	12.35	646	64.0	10.2	37.3	18.3	15.5
6-7 PM	3774	0.0	250	0.0	3000	2912	862	1111	11.37	590	65.1	10.6	37.3	18.3	16.3
7-8 PM	2625	0.0	174	0.0	2999	2511	114	289	5.59	304	67.4	15.0	40.4	18.8	20.0
8-9 PM	1759	0.0	117	0.0	3000	1759	0	117	0.35	0	68.6	52.5	49.7	19.1	19.1
9-10 PM	1299	0.0	87	0.0	3000	1299	0	87	0.35	0	69.1	52.9	49.7	19.3	19.3
10-11 PM	1068	0.0	70	0.0	3000	1068	0	70	0.35	0	69.4	52.9	49.7	19.4	19.4
11PM-MID	802	0.0	53	0.0	3000	802	0	53	0.35	0	69.7	53.0	49.7	19.6	19.6

----- SITE BREAKDOWN DELAYS -----	
BREAKDOWN DURATION (MINS)	0
RANGE OF QUEUE DELAY - MIN	0.0
(VEH-H) MAX	0.0
RANGE OF DIVN DELAY - MIN	0.0
(VEH-H) MAX	0.0
AV BREAKDOWNS PER DAY	0.00
AV QUEUE DELAY/DAY (VEH-H)	0.0
AV DIVN DELAY/DAY (VEH-H)	0.0
AV TOTAL DELAY/DAY (VEH-H)	0.0

----- SITE ACCIDENT DELAYS -----	
ACCIDENT DURATION (MINS)	0
RANGE OF QUEUE DELAY - MIN	0.0
(VEH-H) MAX	0.0
RANGE OF DIVN DELAY - MIN	0.0
(VEH-H) MAX	0.0
AV ACCIDENTS PER DAY	0.00
AV QUEUE DELAY/DAY (VEH-H)	0.0
AV DIVN DELAY/DAY (VEH-H)	0.0
AV TOTAL DELAY/DAY (VEH-H)	0.0

AVERAGE ACCIDENT NUMBERS (PIA/DAY)	
MAIN ROUTE WITHOUT WORKS	0.0103
MAIN ROUTE WITH WORKS	0.0063
DIVERSION	0.0249

PIA: Personal Injury Accidents

IMPACTS ON ROAD USERS	
ROAD USER COSTS PER DAY (DOLLARS)	\$67,238
CONGESTED HOURS PER DAY*	0

*Delays Exceeding 15 Minutes

**IH 94: CARMICHAEL RD TO STH 35 S (ST CROIX COUNTY)
 CONTINUOUS (24 HOUR) CLOSURE
 DIVERSION ROUTE: CARMICHAEL RD TO STAGELINE RD TO USH 12**

MAY
 Analyzed for 2009
 Construction Season

GRAPHICAL REPRESENTATION OF TRAFFIC MODEL INPUT AND OUTPUT

FRIDAY EASTBOUND DIRECTION

