

<b>IH 94: MN 96 TO STH 35 N                  CONTINUOUS (24 HOUR) CLOSURE                  NO DIVERSION ROUTE (MAX QUEUE METHOD)</b>	<b>OCTOBER</b>
	Analyzed for 2009 Construction Season

**SUMMARY OF TRAFFIC MODEL OUTPUT**

MON-THUR                  WESTBOUND DIRECTION

TIME OF DAY	FLOWS AND CAPACITY IN VEH/HR						AVERAGE SPEEDS IN MPH				
	MAIN ROUTE		SITE CAPA CITY	FLOW		AV.DEL PER VEH (MINS)	AVERAGE QUEUE (VEH)	MAIN ROUTE		SITE	
	DEMAND FLOW	PCT HEAVY		MAIN ROUTE	'DIVER TED'			WITHOUT WORK ZONE	WITH WORK ZONE		
MID-1 AM	592	0.0	3000	592	0	0.18	0	70.0	57.8	49.7	
1-2 AM	548	0.0	3000	548	0	0.18	0	70.0	57.8	49.7	
2-3 AM	588	0.0	3000	588	0	0.18	0	70.0	57.8	49.7	
3-4 AM	783	0.0	3000	783	0	0.18	0	69.7	57.8	49.7	
4-5 AM	1416	0.0	3000	1416	0	0.17	0	69.0	57.4	49.7	
5-6 AM	2467	0.0	3000	2467	0	0.19	0	67.7	55.6	47.6	
6-7 AM	2795	0.0	3000	2795	0	0.30	0	67.3	50.3	40.7	
7-8 AM	2673	0.0	3000	2673	0	0.26	0	67.4	52.2	43.0	
8-9 AM	2450	0.0	3000	2450	0	0.19	0	67.7	55.9	48.0	
9-10 AM	2311	0.0	3000	2311	0	0.17	0	67.9	57.1	49.7	
10-11 AM	2382	0.0	3000	2382	0	0.17	0	67.8	57.1	49.7	
11AM-NOON	2471	0.0	3000	2471	0	0.19	0	67.7	55.5	47.5	
NOON-1PM	2520	0.0	3000	2520	0	0.21	0	67.6	54.6	46.3	
1-2 PM	2770	0.0	3000	2770	0	0.29	0	67.3	50.7	41.1	
2-3 PM	2815	0.0	2999	2815	0	0.31	0	67.3	50.0	40.3	
3-4 PM	2987	0.0	2999	2987	0	0.39	1	67.0	46.8	37.5	
4-5 PM	3005	0.0	3000	3005	0	0.63	14	67.0	39.4	37.3	
5-6 PM	2780	0.0	3000	2780	0	0.30	0	67.3	50.2	41.0	
6-7 PM	2315	0.0	3000	2315	0	0.17	0	67.9	57.1	49.7	
7-8 PM	1903	0.0	3000	1903	0	0.17	0	68.4	57.3	49.7	
8-9 PM	1585	0.0	3000	1585	0	0.17	0	68.7	57.4	49.7	
9-10 PM	1347	0.0	3000	1347	0	0.17	0	69.1	57.5	49.7	
10-11 PM	1004	0.0	3000	1004	0	0.18	0	69.5	57.6	49.7	
11PM-MID	705	0.0	3000	705	0	0.18	0	69.9	57.8	49.7	

*----- SITE BREAKDOWN DELAYS -----*	
BREAKDOWN DURATION (MINS)	0
RANGE OF QUEUE DELAY - MIN (VEH-H) MAX	0.0
AV BREAKDOWNS PER DAY	0.00
AV QUEUE DELAY/DAY (VEH-H)	0.0
AV TOTAL DELAY/DAY (VEH-H)	0.0

*----- SITE ACCIDENT DELAYS -----*	
BREAKDOWN DURATION (MINS)	0
RANGE OF QUEUE DELAY - MIN (VEH-H) MAX	0
AV BREAKDOWNS PER DAY	0
AV QUEUE DELAY/DAY (VEH-H)	0
AV TOTAL DELAY/DAY (VEH-H)	0

AVERAGE ACCIDENT NUMBERS (PIA/DAY)	
MAIN ROUTE WITHOUT WORKS	0.0075
MAIN ROUTE WITH WORKS	0.0024
'DIVERSION'	0.0000
<small>PIA: Personal Injury Accidents</small>	
IMPACTS ON ROAD USERS	
ROAD USER COSTS PER DAY	\$2,694
CONGESTED HOURS PER DAY*	0

\*Delays Exceeding User-Specified Maximum

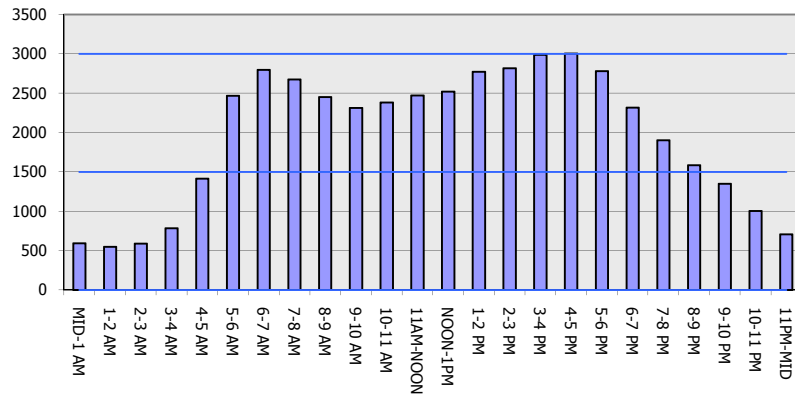
**IH 94: MN 96 TO STH 35 N  
CONTINUOUS (24 HOUR) CLOSURE  
NO DIVERSION ROUTE (MAX QUEUE METHOD)**

**OCTOBER**

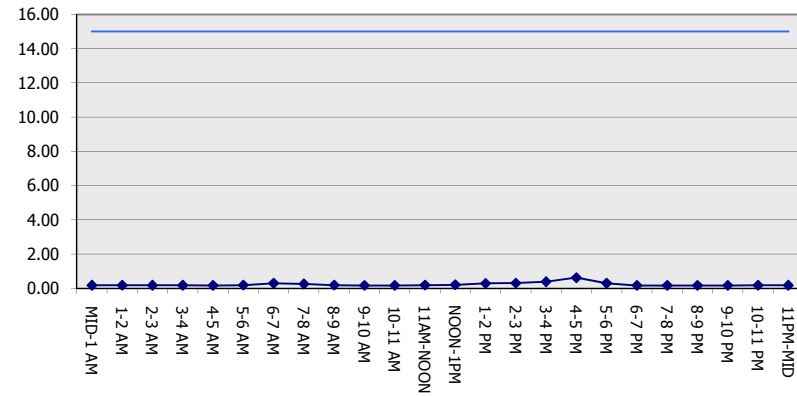
Analyzed for 2009  
Construction Season

**GRAPHICAL REPRESENTATION OF TRAFFIC MODEL INPUT AND OUTPUT**  
**MON-THUR WESTBOUND DIRECTION**

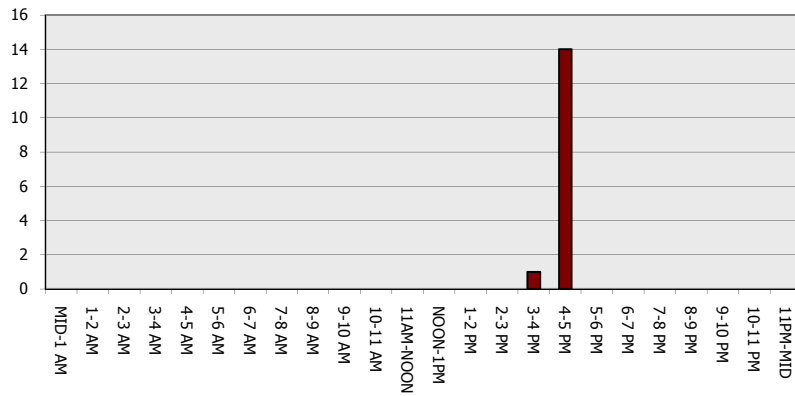
**Main Route - Traffic Demand (Vehicles Per Hour)**



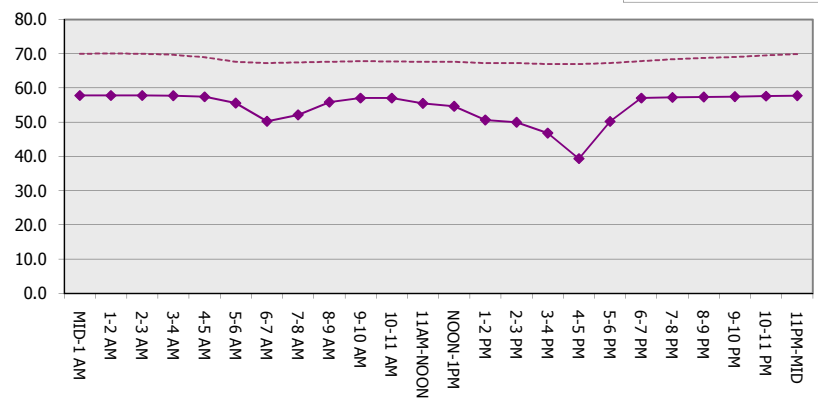
**Main Route Average Delay Per Vehicle (Minutes)**



**Main Route - Average Queue Length (Vehicles)**



**Main Route - Average Speed (MPH)**



<b>IH 94: MN 96 TO STH 35 N                  CONTINUOUS (24 HOUR) CLOSURE                  NO DIVERSION ROUTE (MAX QUEUE METHOD)</b>	<b>OCTOBER</b>
	Analyzed for 2009 Construction Season

**SUMMARY OF TRAFFIC MODEL OUTPUT**

MON-THUR                      EASTBOUND DIRECTION

TIME OF DAY	FLOWS AND CAPACITY IN VEH/HR						AVERAGE SPEEDS IN MPH			
	MAIN ROUTE		SITE CAPA CITY	FLOW		AV.DEL PER VEH (MINS)	AVERAGE QUEUE (VEH)	MAIN ROUTE		SITE
	DEMAND FLOW	PCT HEAVY		MAIN ROUTE	'DIVER TED'			WITHOUT WORK ZONE	WITH WORK ZONE	
MID-1 AM	604	0.0	3000	604	0	0.18	0	70.0	57.8	49.7
1-2 AM	408	0.0	3000	408	0	0.18	0	70.2	57.9	49.7
2-3 AM	365	0.0	3000	365	0	0.18	0	70.2	57.9	49.7
3-4 AM	416	0.0	3000	416	0	0.18	0	70.2	57.9	49.7
4-5 AM	588	0.0	3000	588	0	0.18	0	70.0	57.8	49.7
5-6 AM	1010	0.0	3000	1010	0	0.18	0	69.5	57.6	49.7
6-7 AM	1717	0.0	3000	1717	0	0.17	0	68.6	57.3	49.7
7-8 AM	2251	0.0	3000	2251	0	0.17	0	67.9	57.1	49.7
8-9 AM	2359	0.0	3000	2359	0	0.17	0	67.8	57.1	49.7
9-10 AM	2706	0.0	3000	2706	0	0.27	0	67.4	51.6	42.4
10-11 AM	2883	0.0	3000	2883	0	0.33	0	67.1	49.0	39.1
11AM-NOON	2828	0.0	3000	2828	0	0.31	0	67.2	49.8	40.1
NOON-1PM	2798	0.0	2999	2798	0	0.30	0	67.3	50.2	40.6
1-2 PM	2991	0.0	2999	2991	0	0.46	6	67.0	44.2	37.8
2-3 PM	3281	0.0	3000	3281	0	2.65	145	66.6	18.2	37.3
3-4 PM	3638	0.0	3000	3638	0	11.21	616	66.0	9.4	37.3
4-5 PM	3579	0.0	3000	3579	0	23.07	1256	66.3	7.7	37.3
5-6 PM	2934	0.0	3000	2934	0	28.04	1524	67.1	7.5	37.3
6-7 PM	2523	0.0	2999	2523	0	23.06	1251	67.6	7.7	37.3
7-8 PM	1931	0.0	2999	1931	0	5.68	479	68.3	14.7	44.3
8-9 PM	1603	0.0	3000	1603	0	0.17	0	68.7	57.4	49.7
9-10 PM	1416	0.0	3000	1416	0	0.17	0	69.0	57.4	49.7
10-11 PM	1171	0.0	3000	1171	0	0.18	0	69.3	57.6	49.7
11PM-MID	776	0.0	3000	776	0	0.18	0	69.7	57.8	49.7

**\*----- SITE BREAKDOWN DELAYS -----\***

BREAKDOWN DURATION (MINS)	0
RANGE OF QUEUE DELAY - MIN (VEH-H) MAX	0.0
AV BREAKDOWNS PER DAY	0.00
AV QUEUE DELAY/DAY (VEH-H)	0.0
AV TOTAL DELAY/DAY (VEH-H)	0.0

**\*----- SITE ACCIDENT DELAYS -----\***

BREAKDOWN DURATION (MINS)	0
RANGE OF QUEUE DELAY - MIN (VEH-H) MAX	0
AV BREAKDOWNS PER DAY	0
AV QUEUE DELAY/DAY (VEH-H)	0
AV TOTAL DELAY/DAY (VEH-H)	0

**AVERAGE ACCIDENT NUMBERS (PIA/DAY)**

MAIN ROUTE WITHOUT WORKS	0.0074
MAIN ROUTE WITH WORKS	0.0024
'DIVERSION'	0.0000

PIA: Personal Injury Accidents

**ECONOMIC IMPACT ON ROAD USERS**

ROAD USER COSTS PER DAY	\$65,027
CONGESTED HOURS PER DAY*	0

\*Delays Exceeding User-Specified Maximum

**IH 94: MN 96 TO STH 35 N  
CONTINUOUS (24 HOUR) CLOSURE  
NO DIVERSION ROUTE (MAX QUEUE METHOD)**

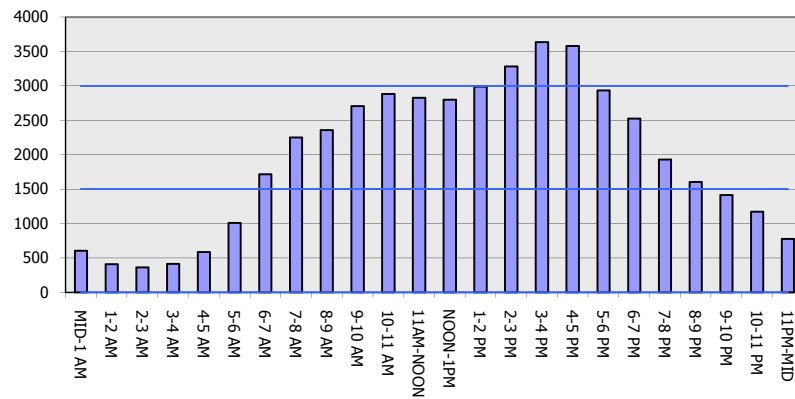
**OCTOBER**

Analyzed for 2009  
Construction Season

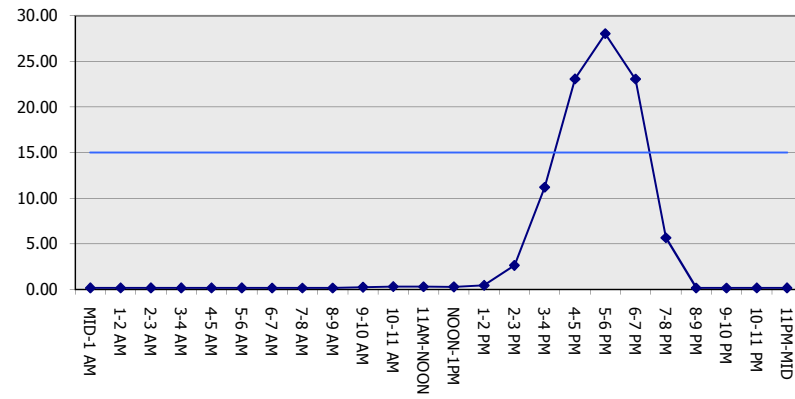
**GRAPHICAL REPRESENTATION OF TRAFFIC MODEL INPUT AND OUTPUT**

**MON-THUR EASTBOUND DIRECTION**

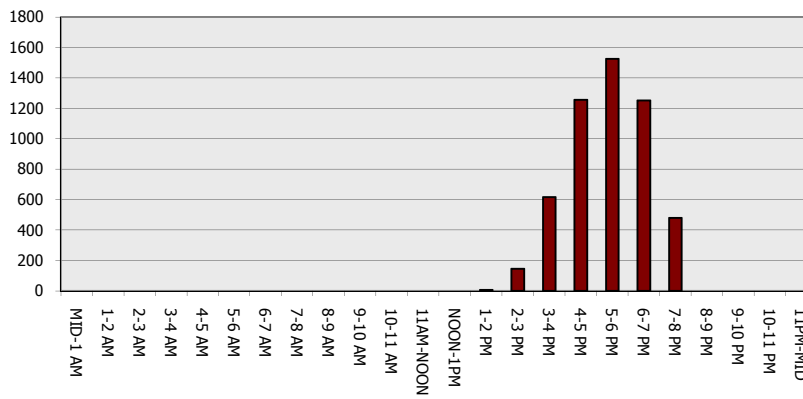
**Main Route - Traffic Demand (Vehicles Per Hour)**



**Main Route Average Delay Per Vehicle (Minutes)**



**Main Route - Average Queue Length (Vehicles)**



**Main Route - Average Speed (MPH)**

