

IH 94: MN 96 TO STH 35 N (ST CROIX COUNTY) CONTINUOUS (24 HOUR) 2 LANE CLOSURE DIVERSION ROUTE: STH 35 - STH 64 - MN 95	AUGUST
	Analyzed for 2009 Construction Season

SUMMARY OF TRAFFIC MODEL OUTPUT

SATURDAY WESTBOUND DIRECTION

TIME OF DAY	FLOWS AND CAPACITY IN VEH/HR										AVERAGE SPEEDS IN MPH				
	MAIN ROUTE		ALTERNATE ROUTE		SITE CAPA CITY	FLOW MAIN ROUTE	FLOW DIVER -TING	TOTAL DIVN FLOW	AV.DEL PER VEH (MINS)	AVERAGE QUEUE (VEH)	MAIN ROUTE		ALTERNATE ROUTE		
	DEMAND FLOW	PCT HEAVY	NORMAL FLOW	PCT HEAVY							WITHOUT WORK ZN	WITH WORK ZN	SITE	WITHOUT WORK ZN	WITH WORK ZN
MID-1 AM	888	0.0	84	0.0	1500	888	0	84	0.74	39	69.6	37.8	41.8	29.0	29.0
1-2 AM	636	0.0	60	0.0	1500	636	0	60	0.28	0	69.9	52.8	43.0	29.2	29.2
2-3 AM	526	0.0	49	0.0	1500	526	0	49	0.27	0	70.0	53.2	43.4	29.3	29.3
3-4 AM	563	0.0	53	0.0	1500	563	0	53	0.27	0	70.0	53.1	43.3	29.3	29.3
4-5 AM	699	0.0	66	0.0	1500	699	0	66	0.28	0	69.9	52.7	42.8	29.2	29.2
5-6 AM	836	0.0	78	0.0	1500	836	0	78	0.29	0	69.7	52.2	42.3	29.1	29.1
6-7 AM	954	0.0	90	0.0	1499	954	0	90	0.29	0	69.6	51.9	41.9	28.9	28.9
7-8 AM	1485	0.0	140	0.0	1499	1485	0	140	0.88	14	68.9	34.3	32.5	28.5	28.5
8-9 AM	2028	0.0	191	0.0	1500	2028	0	191	9.86	283	68.2	7.3	30.8	28.0	28.2
9-10 AM	2773	0.0	262	0.0	1500	2378	395	656	40.77	1066	67.3	4.1	30.8	27.3	24.8
10-11 AM	3580	0.0	337	0.0	1499	2166	1414	1751+	70.37	1834	66.3	3.7	30.8	26.6	16.3
11A-NOON	3749	0.0	354	0.0	1499	1500	2249	2603+	76.74	2000	65.3	3.6	30.8	26.5	15.2
NOON-1PM	3633	0.0	342	0.0	1499	1495	2138	2481+	76.75	1999	66.0	3.6	30.8	26.6	15.2
1-2 PM	3883	0.0	366	0.0	1499	1500	2383	2749+	76.68	2000	64.3	3.6	30.8	26.3	15.2
2-3 PM	3765	0.0	355	0.0	1499	1500	2265	2620+	76.73	2000	65.1	3.6	30.8	26.5	15.2
3-4 PM	3762	0.0	355	0.0	1499	1500	2262	2617+	76.74	2000	65.1	3.6	30.8	26.5	15.2
4-5 PM	3560	0.0	336	0.0	1499	1470	2091	2427+	76.53	1993	66.3	3.6	30.8	26.6	15.2
5-6 PM	3182	0.0	300	0.0	1499	1403	1779	2079+	75.92	1976	66.8	3.6	30.8	27.0	15.3
6-7 PM	2799	0.0	264	0.0	1499	1355	1444	1708+	74.61	1941	67.3	3.7	30.8	27.3	15.5
7-8 PM	2365	0.0	223	0.0	1499	1123	1242	1465+	64.24	1669	67.8	3.7	30.8	27.7	17.5
8-9 PM	2071	0.0	196	0.0	1499	1209	862	1058	50.97	1321	68.2	3.9	30.8	27.9	21.2
9-10 PM	1859	0.0	175	0.0	1499	1345	514	688	42.98	1111	68.4	4.0	30.8	28.1	24.5
10-11 PM	1391	0.0	131	0.0	1499	1277	115	245	35.69	920	69.0	4.2	30.8	28.6	28.5
11PM-MID	906	0.0	86	0.0	1499	906	0	86	19.72	526	69.6	5.2	33.0	29.0	29.5

+ INDICATES DIVERSION FLOW EXCEEDS USER-SPECIFIED WARNING LIMIT

----- SITE BREAKDOWN DELAYS -----	
BREAKDOWN DURATION (MINS)	0
RANGE OF QUEUE DELAY - MIN (VEH-H) MAX	0.0
RANGE OF DIVN DELAY - MIN (VEH-H) MAX	0.0
AV BREAKDOWNS PER DAY	0.00
AV QUEUE DELAY/DAY (VEH-H)	0.0
AV DIVN DELAY/DAY (VEH-H)	0.0
AV TOTAL DELAY/DAY (VEH-H)	0.0

----- SITE ACCIDENT DELAYS -----	
ACCIDENT DURATION (MINS)	0
RANGE OF QUEUE DELAY - MIN (VEH-H) MAX	0.0
RANGE OF DIVN DELAY - MIN (VEH-H) MAX	0.0
AV ACCIDENTS PER DAY	0.00
AV QUEUE DELAY/DAY (VEH-H)	0.0
AV DIVN DELAY/DAY (VEH-H)	0.0
AV TOTAL DELAY/DAY (VEH-H)	0.0

AVERAGE ACCIDENT NUMBERS (PIA/DAY)	
MAIN ROUTE WITHOUT WORKS	0.0083
MAIN ROUTE WITH WORKS	0.0016
DIVERSION	0.5080

PIA: Personal Injury Accidents

IMPACTS ON ROAD USERS	
ROAD USER COSTS PER DAY (DOLLARS)	\$953,311
CONGESTED HOURS PER DAY*	15

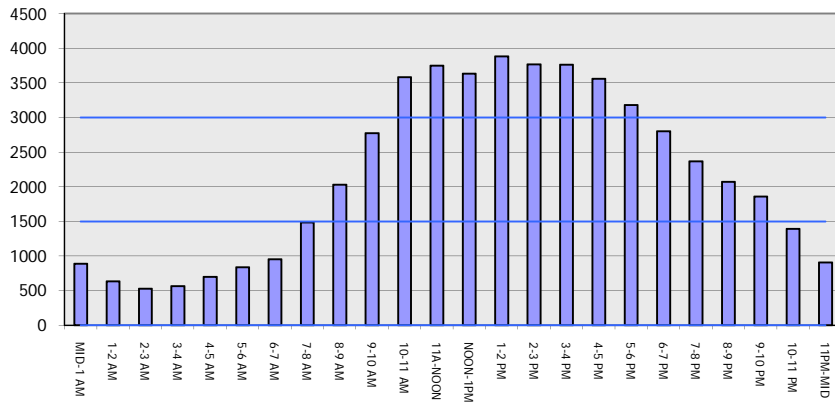
*Delays Exceeding 15 Minutes

**IH 94: MN 96 TO STH 35 N (ST CROIX COUNTY)
 CONTINUOUS (24 HOUR) 2 LANE CLOSURE
 DIVERSION ROUTE: STH 35 - STH 64 - MN 95**

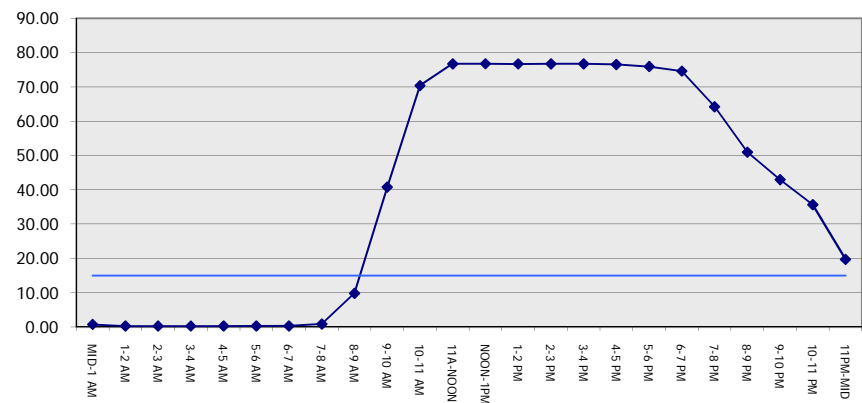
AUGUST
 Analyzed for 2009
 Construction Season

GRAPHICAL REPRESENTATION OF TRAFFIC MODEL INPUT AND OUTPUT
SATURDAY WESTBOUND DIRECTION

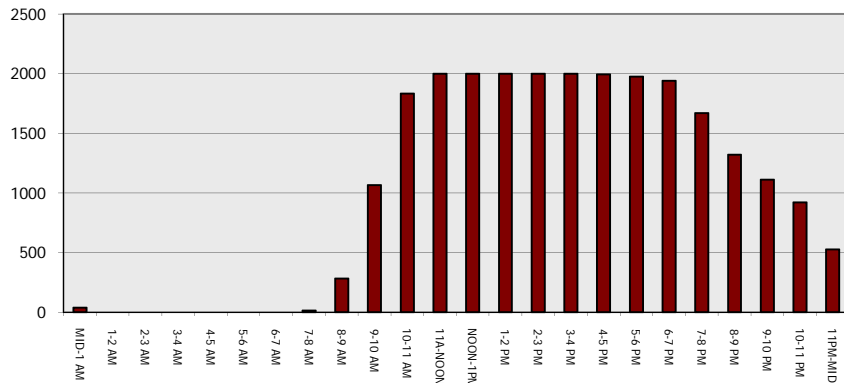
Main Route - Traffic Demand (Vehicles Per Hour)



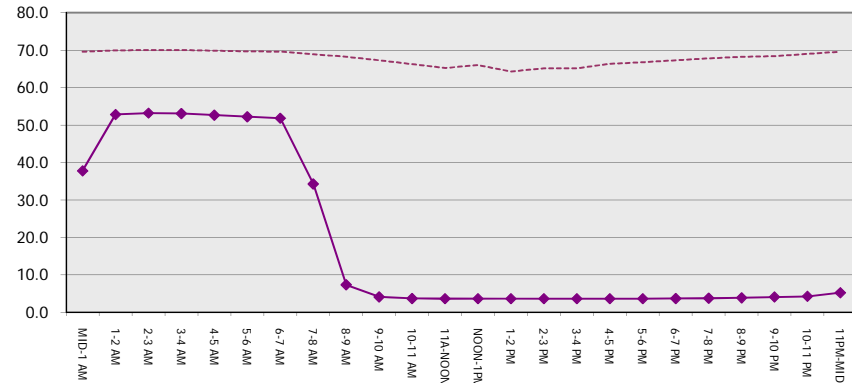
Main Route Average Delay Per Vehicle (Minutes)



Main Route - Average Queue Length (Vehicles)



Main Route - Average Speed (MPH)



IH 94: MN 96 TO STH 35 N (ST CROIX COUNTY) CONTINUOUS (24 HOUR) 2 LANE CLOSURE DIVERSION ROUTE: STH 35 - STH 64 - MN 95	AUGUST
	Analyzed for 2009 Construction Season

SUMMARY OF TRAFFIC MODEL OUTPUT

SATURDAY EASTBOUND DIRECTION

TIME OF DAY	FLOWS AND CAPACITY IN VEH/HR							AVERAGE SPEEDS IN MPH			AVERAGE SPEEDS IN MPH				
	MAIN		DIVERSION		SITE CAPA CITY	FLOW MAIN ROUTE	FLOW DIVER -TING	TOTAL DIVN FLOW	AV.DEL PER VEH (MINS)	AVERAGE QUEUE (VEH)	MAIN ROUTE		ALTERNATE ROUTE		
	DEMAND FLOW	PCT HEAVY	NORMAL FLOW	PCT HEAVY							WITHOUT WORK ZN	WITH WORK ZN	SITE	WITHOUT WORK ZN	WITH WORK ZN
MID-1 AM	914	0.0	86	0.0	1500	914	0	86	0.32	1	69.6	50.8	42.0	29.0	29.0
1-2 AM	542	0.0	51	0.0	1500	542	0	51	0.27	0	70.0	53.2	43.3	29.3	29.3
2-3 AM	447	0.0	42	0.0	1500	447	0	42	0.27	0	70.2	53.5	43.7	29.4	29.4
3-4 AM	406	0.0	39	0.0	1500	406	0	39	0.26	0	70.2	53.6	43.8	29.4	29.4
4-5 AM	506	0.0	48	0.0	1500	506	0	48	0.27	0	70.1	53.3	43.5	29.4	29.4
5-6 AM	757	0.0	71	0.0	1500	757	0	71	0.28	0	69.8	52.5	42.5	29.1	29.1
6-7 AM	1393	0.0	131	0.0	1499	1393	0	131	0.73	11	69.0	37.6	34.7	28.6	28.6
7-8 AM	2358	0.0	222	0.0	1500	2358	0	222	13.74	413	67.8	6.4	30.8	27.7	28.1
8-9 AM	3364	0.0	317	0.0	1500	2517	847	1164	54.93	1435	66.6	3.9	30.8	26.8	20.3
9-10 AM	4145	0.0	390	0.0	1500	1500	2645	3035+	76.55	2000	62.5	3.6	30.8	26.1	15.2
10-11 AM	4682	0.0	441	0.0	1500	1500	3182	3624+	76.26	2000	58.9	3.6	30.8	25.6	15.2
11A-NOON	4449	0.0	420	0.0	1500	1500	2949	3369+	76.39	2000	60.5	3.6	30.8	25.8	15.2
NOON-1PM	4091	0.0	386	0.0	1500	1500	2591	2977+	76.58	2000	62.9	3.6	30.8	26.1	15.2
1-2 PM	3662	0.0	345	0.0	1500	1500	2162	2507+	76.78	2000	65.8	3.6	30.8	26.5	15.2
2-3 PM	3446	0.0	324	0.0	1500	1500	1945	2270+	76.82	2000	66.4	3.6	30.8	26.7	15.2
3-4 PM	3328	0.0	314	0.0	1500	1514	1814	2128+	76.71	1997	66.6	3.6	30.8	26.8	15.2
4-5 PM	2925	0.0	276	0.0	1500	1508	1417	1693+	75.24	1958	67.1	3.6	30.8	27.2	15.4
5-6 PM	2791	0.0	263	0.0	1500	1397	1394	1657+	73.26	1906	67.3	3.7	30.8	27.3	15.7
6-7 PM	2389	0.0	225	0.0	1500	1148	1241	1466+	64.25	1670	67.8	3.7	30.8	27.7	17.5
7-8 PM	2079	0.0	196	0.0	1500	1202	877	1073	51.35	1331	68.1	3.9	30.8	27.9	21.1
8-9 PM	1832	0.0	173	0.0	1500	1333	499	672	42.69	1103	68.4	4.0	30.8	28.2	24.7
9-10 PM	1545	0.0	145	0.0	1500	1371	174	319	37.15	958	68.8	4.2	30.8	28.4	27.8
10-11 PM	1225	0.0	115	0.0	1500	1225	0	115	30.20	777	69.2	4.4	30.8	28.7	29.6
11PM-MID	915	0.0	86	0.0	1499	915	0	86	11.34	337	69.6	7.0	35.5	29.0	29.2

+ INDICATES DIVERSION FLOW EXCEEDS USER-SPECIFIED WARNING LIMIT

----- SITE BREAKDOWN DELAYS -----	
BREAKDOWN DURATION (MINS)	0
RANGE OF QUEUE DELAY - MIN	0.0
(VEH-H) MAX	0.0
RANGE OF DIVN DELAY - MIN	0.0
(VEH-H) MAX	0.0
AV BREAKDOWNS PER DAY	0.00
AV QUEUE DELAY/DAY (VEH-H)	0.0
AV DIVN DELAY/DAY (VEH-H)	0.0
AV TOTAL DELAY/DAY (VEH-H)	0.0

----- SITE ACCIDENT DELAYS -----	
ACCIDENT DURATION (MINS)	0
RANGE OF QUEUE DELAY - MIN	0.0
(VEH-H) MAX	0.0
RANGE OF DIVN DELAY - MIN	0.0
(VEH-H) MAX	0.0
AV ACCIDENTS PER DAY	0.00
AV QUEUE DELAY/DAY (VEH-H)	0.0
AV DIVN DELAY/DAY (VEH-H)	0.0
AV TOTAL DELAY/DAY (VEH-H)	0.0

AVERAGE ACCIDENT NUMBERS (PIA/DAY)	
MAIN ROUTE WITHOUT WORKS	0.0086
MAIN ROUTE WITH WORKS	0.0015
DIVERSION	0.5626

PIA: Personal Injury Accidents

IMPACTS ON ROAD USERS	
ROAD USER COSTS PER DAY (DOLLARS)	\$1,036,441
CONGESTED HOURS PER DAY*	15

*Delays Exceeding 15 Minutes

**IH 94: MN 96 TO STH 35 N (ST CROIX COUNTY)
 CONTINUOUS (24 HOUR) 2 LANE CLOSURE
 DIVERSION ROUTE: STH 35 - STH 64 - MN 95**

AUGUST
 Analyzed for 2009
 Construction Season

GRAPHICAL REPRESENTATION OF TRAFFIC MODEL INPUT AND OUTPUT
SATURDAY EASTBOUND DIRECTION

