

**IH 94: MN 96 TO STH 35 N
CONTINUOUS (24 HOUR) CLOSURE
NO DIVERSION ROUTE (MAX QUEUE METHOD)**

AUGUST

Analyzed for 2009
Construction Season

SUMMARY OF TRAFFIC MODEL OUTPUT

MON-THUR WESTBOUND DIRECTION

TIME OF DAY	FLOWS AND CAPACITY IN VEH/HR						AVERAGE SPEEDS IN MPH				
	MAIN ROUTE		SITE CAPA CITY	FLOW		AV.DEL PER VEH (MINS)	AVERAGE QUEUE (VEH)	MAIN ROUTE		SITE	
	DEMAND FLOW	PCT HEAVY		MAIN ROUTE	'DIVER TED'			WITHOUT WORK ZONE	WITH WORK ZONE		
MID-1 AM	713	0.0	3000	713	0	0.18	0	69.9	57.8	49.7	
1-2 AM	620	0.0	3000	620	0	0.18	0	70.0	57.8	49.7	
2-3 AM	625	0.0	3000	625	0	0.18	0	70.0	57.8	49.7	
3-4 AM	873	0.0	3000	873	0	0.18	0	69.7	57.7	49.7	
4-5 AM	1599	0.0	3000	1599	0	0.17	0	68.7	57.4	49.7	
5-6 AM	2498	0.0	3000	2498	0	0.20	0	67.6	55.0	46.9	
6-7 AM	2789	0.0	3000	2789	0	0.30	0	67.3	50.4	40.7	
7-8 AM	2712	0.0	3000	2712	0	0.27	0	67.4	51.5	42.2	
8-9 AM	2618	0.0	3000	2618	0	0.24	0	67.5	53.0	44.2	
9-10 AM	2696	0.0	3000	2696	0	0.27	0	67.4	51.8	42.5	
10-11 AM	2836	0.0	3000	2836	0	0.31	0	67.2	49.7	39.9	
11AM-NOON	2944	0.0	2999	2944	0	0.35	0	67.1	48.2	38.1	
NOON-1PM	3025	0.0	2999	3025	0	0.50	8	67.0	43.0	37.4	
1-2 PM	3284	0.0	3000	3284	0	3.03	164	66.6	16.7	37.3	
2-3 PM	3366	0.0	3000	3366	0	9.20	494	66.6	9.9	37.3	
3-4 PM	3481	0.0	3000	3481	0	16.94	919	66.4	8.3	37.3	
4-5 PM	3538	0.0	3000	3538	0	26.46	1442	66.3	7.5	37.3	
5-6 PM	3223	0.0	3000	3223	0	33.73	1839	66.8	7.3	37.3	
6-7 PM	2752	0.0	3000	2752	0	33.59	1830	67.3	7.3	37.3	
7-8 PM	2337	0.0	3000	2337	0	25.18	1369	67.8	7.6	37.3	
8-9 PM	2029	0.0	2999	2029	0	9.03	550	68.2	10.6	43.3	
9-10 PM	1672	0.0	3000	1672	0	0.18	0	68.7	56.8	49.7	
10-11 PM	1253	0.0	3000	1253	0	0.18	0	69.2	57.6	49.7	
11PM-MID	848	0.0	3000	848	0	0.18	0	69.7	57.7	49.7	

----- SITE BREAKDOWN DELAYS -----

BREAKDOWN DURATION (MINS)	0
RANGE OF QUEUE DELAY - MIN (VEH-H) MAX	0.0
AV BREAKDOWNS PER DAY	0.00
AV QUEUE DELAY/DAY (VEH-H)	0.0
AV TOTAL DELAY/DAY (VEH-H)	0.0

----- SITE ACCIDENT DELAYS -----

BREAKDOWN DURATION (MINS)	0
RANGE OF QUEUE DELAY - MIN (VEH-H) MAX	0
AV BREAKDOWNS PER DAY	0
AV QUEUE DELAY/DAY (VEH-H)	0
AV TOTAL DELAY/DAY (VEH-H)	0

AVERAGE ACCIDENT NUMBERS (PIA/DAY)

MAIN ROUTE WITHOUT WORKS	0.0086
MAIN ROUTE WITH WORKS	0.0028
'DIVERSION'	0.0000

PIA: Personal Injury Accidents

IMPACTS ON ROAD USERS

ROAD USER COSTS PER DAY	\$107,595
CONGESTED HOURS PER DAY*	0

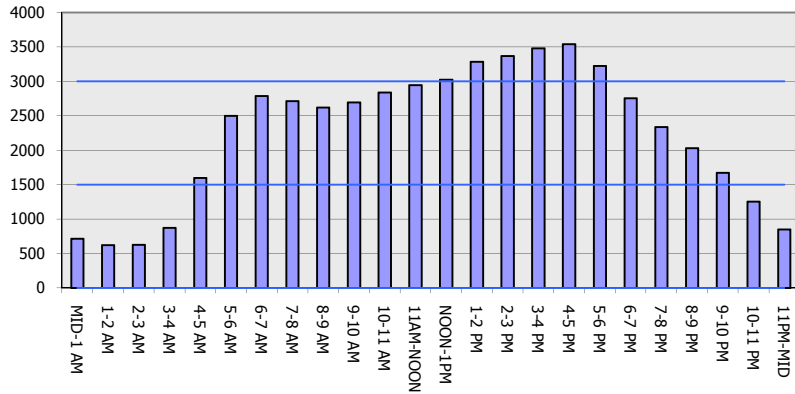
*Delays Exceeding User-Specified Maximum

**IH 94: MN 96 TO STH 35 N
CONTINUOUS (24 HOUR) CLOSURE
NO DIVERSION ROUTE (MAX QUEUE METHOD)**

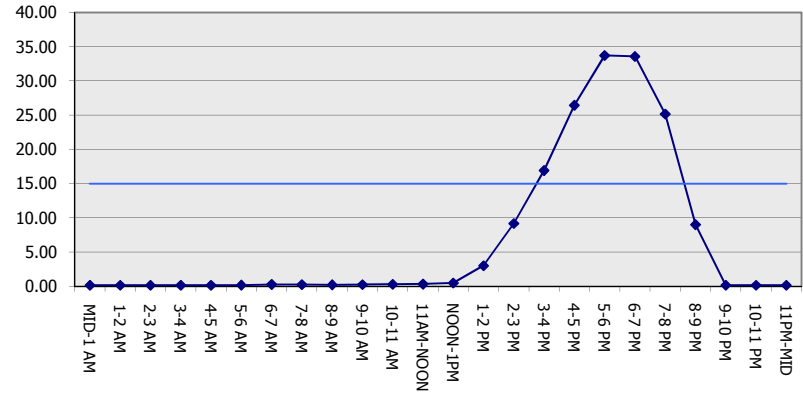
AUGUST
Analyzed for 2009
Construction Season

GRAPHICAL REPRESENTATION OF TRAFFIC MODEL INPUT AND OUTPUT
MON-THUR WESTBOUND DIRECTION

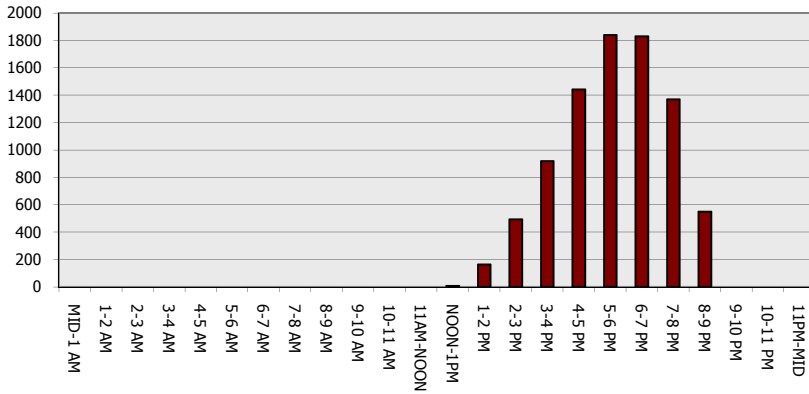
Main Route - Traffic Demand (Vehicles Per Hour)



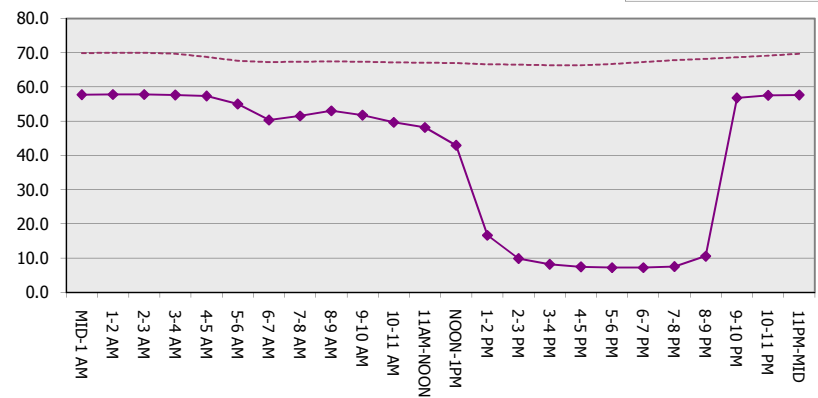
Main Route Average Delay Per Vehicle (Minutes)



Main Route - Average Queue Length (Vehicles)



Main Route - Average Speed (MPH)



IH 94: MN 96 TO STH 35 N CONTINUOUS (24 HOUR) CLOSURE NO DIVERSION ROUTE (MAX QUEUE METHOD)	AUGUST
	Analyzed for 2009 Construction Season

SUMMARY OF TRAFFIC MODEL OUTPUT

MON-THUR EASTBOUND DIRECTION

TIME OF DAY	FLOWS AND CAPACITY IN VEH/HR						AVERAGE SPEEDS IN MPH			
	MAIN ROUTE		SITE CAPA CITY	FLOW		AV.DEL PER VEH (MINS)	AVERAGE QUEUE (VEH)	MAIN ROUTE		SITE
	DEMAND FLOW	PCT HEAVY		MAIN ROUTE	'DIVER TED'			WITHOUT WORK ZONE	WITH WORK ZONE	
MID-1 AM	661	0.0	3000	661	0	0.18	0	69.9	57.8	49.7
1-2 AM	442	0.0	3000	442	0	0.18	0	70.2	57.9	49.7
2-3 AM	389	0.0	3000	389	0	0.18	0	70.2	57.9	49.7
3-4 AM	447	0.0	3000	447	0	0.18	0	70.2	57.9	49.7
4-5 AM	646	0.0	3000	646	0	0.18	0	69.9	57.8	49.7
5-6 AM	1096	0.0	3000	1096	0	0.18	0	69.4	57.6	49.7
6-7 AM	1920	0.0	3000	1920	0	0.17	0	68.4	57.3	49.7
7-8 AM	2406	0.0	3000	2406	0	0.17	0	67.8	56.7	49.2
8-9 AM	2656	0.0	2999	2656	0	0.25	0	67.4	52.5	43.4
9-10 AM	3225	0.0	2999	3225	0	1.58	86	66.7	24.7	37.3
10-11 AM	3486	0.0	3000	3486	0	8.48	463	66.4	10.2	37.3
11AM-NOON	3405	0.0	2999	3405	0	16.96	918	66.5	8.3	37.3
NOON-1PM	3337	0.0	2999	3337	0	23.61	1283	66.6	7.7	37.3
1-2 PM	3469	0.0	3000	3469	0	30.73	1676	66.4	7.3	37.3
2-3 PM	3717	0.0	2999	3717	0	41.37+	2267	65.5	7.1	37.3
3-4 PM	3902	0.0	2999	2993	909	47.69+	2620	64.2	7.0	37.3
4-5 PM	3836	0.0	2999	2985	852	47.69+	2618	64.6	7.0	37.3
5-6 PM	3292	0.0	2999	2978	315	47.50+	2598	66.6	7.0	37.3
6-7 PM	2865	0.0	2999	2856	9	46.69+	2551	67.2	7.0	37.3
7-8 PM	2301	0.0	2999	2301	0	39.06+	2130	67.9	7.1	37.3
8-9 PM	1950	0.0	2999	1950	0	22.82	1248	68.3	7.8	37.7
9-10 PM	1622	0.0	2999	1622	0	1.13	189	68.7	34.0	49.6
10-11 PM	1367	0.0	3000	1367	0	0.17	0	69.1	57.5	49.7
11PM-MID	900	0.0	3000	900	0	0.18	0	69.6	57.7	49.7

+ INDICATES QUEUEING EXCEEDS USER-SPECIFIED MAXIMUM LIMIT

----- SITE BREAKDOWN DELAYS -----	
BREAKDOWN DURATION (MINS)	0
RANGE OF QUEUE DELAY - MIN (VEH-H) MAX	0.0
AV BREAKDOWNS PER DAY	0.00
AV QUEUE DELAY/DAY (VEH-H)	0.0
AV TOTAL DELAY/DAY (VEH-H)	0.0

----- SITE ACCIDENT DELAYS -----	
BREAKDOWN DURATION (MINS)	0
RANGE OF QUEUE DELAY - MIN (VEH-H) MAX	0
AV BREAKDOWNS PER DAY	0
AV QUEUE DELAY/DAY (VEH-H)	0
AV TOTAL DELAY/DAY (VEH-H)	0

AVERAGE ACCIDENT NUMBERS (PIA/DAY)	
MAIN ROUTE WITHOUT WORKS	0.0085
MAIN ROUTE WITH WORKS	0.0026
'DIVERSION'	0.0008

PIA: Personal Injury Accidents

ECONOMIC IMPACT ON ROAD USERS	
ROAD USER COSTS PER DAY	\$275,502
CONGESTED HOURS PER DAY*	6

*Delays Exceeding User-Specified Maximum

**IH 94: MN 96 TO STH 35 N
CONTINUOUS (24 HOUR) CLOSURE
NO DIVERSION ROUTE (MAX QUEUE METHOD)**

AUGUST
Analyzed for 2009
Construction Season

GRAPHICAL REPRESENTATION OF TRAFFIC MODEL INPUT AND OUTPUT
MON-THUR EASTBOUND DIRECTION

