

IH 94: MN 96 TO STH 35 N CONTINUOUS (24 HOUR) CLOSURE NO DIVERSION ROUTE (MAX QUEUE METHOD)	MAY
	Analyzed for 2009 Construction Season

SUMMARY OF TRAFFIC MODEL OUTPUT

MON-THUR WESTBOUND DIRECTION

TIME OF DAY	FLOWS AND CAPACITY IN VEH/HR						AVERAGE SPEEDS IN MPH				
	MAIN ROUTE		SITE CAPA CITY	FLOW		AV.DEL PER VEH (MINS)	AVERAGE QUEUE (VEH)	MAIN ROUTE		SITE	
	DEMAND FLOW	PCT HEAVY		MAIN ROUTE	'DIVER TED'			WITHOUT WORK ZONE	WITH WORK ZONE		
MID-1 AM	615	0.0	3000	615	0	0.18	0	70.0	57.8	49.7	
1-2 AM	532	0.0	3000	532	0	0.18	0	70.0	57.8	49.7	
2-3 AM	568	0.0	3000	568	0	0.18	0	70.0	57.8	49.7	
3-4 AM	813	0.0	3000	813	0	0.18	0	69.7	57.7	49.7	
4-5 AM	1496	0.0	3000	1496	0	0.17	0	68.9	57.4	49.7	
5-6 AM	2485	0.0	3000	2485	0	0.20	0	67.6	55.3	47.2	
6-7 AM	2716	0.0	3000	2716	0	0.27	0	67.4	51.5	42.1	
7-8 AM	2668	0.0	3000	2668	0	0.26	0	67.4	52.2	43.1	
8-9 AM	2394	0.0	3000	2394	0	0.17	0	67.8	56.9	49.5	
9-10 AM	2412	0.0	3000	2412	0	0.17	0	67.8	56.6	49.0	
10-11 AM	2502	0.0	3000	2502	0	0.20	0	67.6	55.0	46.8	
11AM-NOON	2599	0.0	3000	2599	0	0.24	0	67.5	53.3	44.5	
NOON-1PM	2746	0.0	2999	2746	0	0.28	0	67.3	51.0	41.6	
1-2 PM	3002	0.0	2999	3002	0	0.46	6	67.0	44.2	37.6	
2-3 PM	3119	0.0	3000	3119	0	1.59	73	66.9	24.2	37.3	
3-4 PM	3329	0.0	3000	3329	0	5.59	300	66.6	12.1	37.3	
4-5 PM	3364	0.0	3000	3364	0	12.38	667	66.6	9.0	37.3	
5-6 PM	2896	0.0	2999	2896	0	15.10	811	67.1	8.4	37.3	
6-7 PM	2483	0.0	2999	2483	0	9.06	497	67.6	10.1	38.6	
7-8 PM	2131	0.0	3000	2131	0	0.38	29	68.1	47.6	49.6	
8-9 PM	1869	0.0	3000	1869	0	0.17	0	68.4	57.3	49.7	
9-10 PM	1501	0.0	3000	1501	0	0.17	0	68.9	57.4	49.7	
10-11 PM	1128	0.0	3000	1128	0	0.18	0	69.3	57.6	49.7	
11PM-MID	743	0.0	3000	743	0	0.18	0	69.8	57.8	49.7	

----- SITE BREAKDOWN DELAYS -----

BREAKDOWN DURATION (MINS)	0
RANGE OF QUEUE DELAY - MIN (VEH-H) MAX	0.0
AV BREAKDOWNS PER DAY	0.00
AV QUEUE DELAY/DAY (VEH-H)	0.0
AV TOTAL DELAY/DAY (VEH-H)	0.0

----- SITE ACCIDENT DELAYS -----

BREAKDOWN DURATION (MINS)	0
RANGE OF QUEUE DELAY - MIN (VEH-H) MAX	0
AV BREAKDOWNS PER DAY	0
AV QUEUE DELAY/DAY (VEH-H)	0
AV TOTAL DELAY/DAY (VEH-H)	0

AVERAGE ACCIDENT NUMBERS (PIA/DAY)

MAIN ROUTE WITHOUT WORKS	0.0080
MAIN ROUTE WITH WORKS	0.0025
'DIVERSION'	0.0000

PIA: Personal Injury Accidents

IMPACTS ON ROAD USERS

ROAD USER COSTS PER DAY	\$30,965
CONGESTED HOURS PER DAY*	0

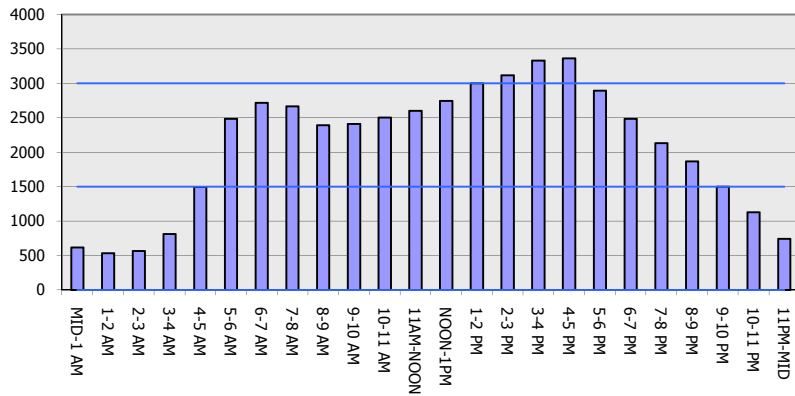
*Delays Exceeding User-Specified Maximum

**IH 94: MN 96 TO STH 35 N
CONTINUOUS (24 HOUR) CLOSURE
NO DIVERSION ROUTE (MAX QUEUE METHOD)**

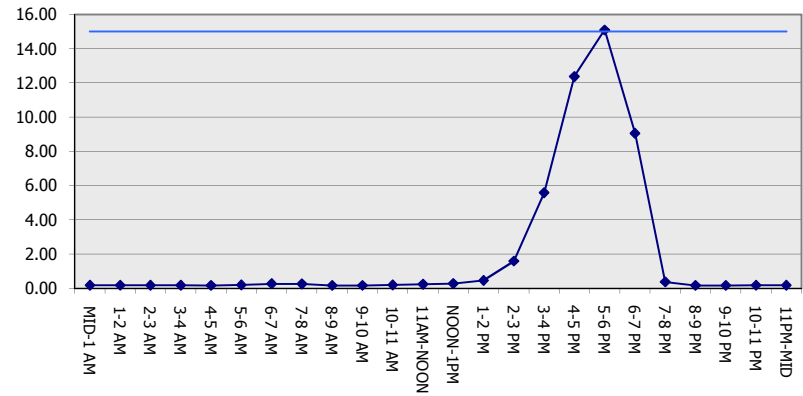
MAY
Analyzed for 2009
Construction Season

GRAPHICAL REPRESENTATION OF TRAFFIC MODEL INPUT AND OUTPUT
MON-THUR WESTBOUND DIRECTION

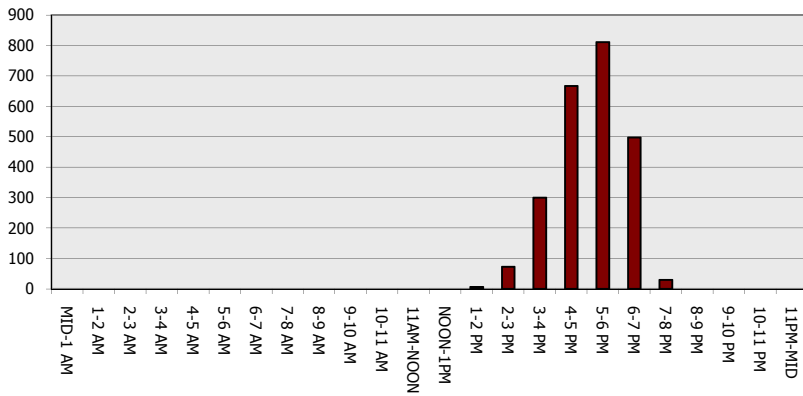
Main Route - Traffic Demand (Vehicles Per Hour)



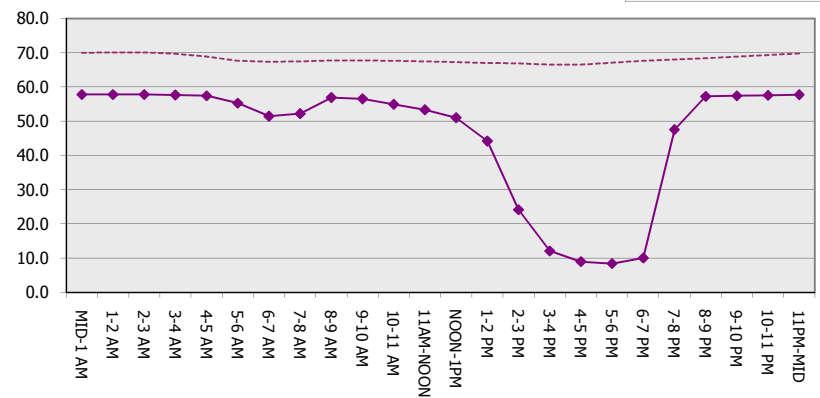
Main Route Average Delay Per Vehicle (Minutes)



Main Route - Average Queue Length (Vehicles)



Main Route - Average Speed (MPH)



IH 94: MN 96 TO STH 35 N CONTINUOUS (24 HOUR) CLOSURE NO DIVERSION ROUTE (MAX QUEUE METHOD)	MAY
	Analyzed for 2009 Construction Season

SUMMARY OF TRAFFIC MODEL OUTPUT

MON-THUR EASTBOUND DIRECTION

TIME OF DAY	FLOWS AND CAPACITY IN VEH/HR						AVERAGE SPEEDS IN MPH			
	MAIN ROUTE		SITE CAPA CITY	FLOW		AV.DEL PER VEH (MINS)	AVERAGE QUEUE (VEH)	MAIN ROUTE		SITE
	DEMAND FLOW	PCT HEAVY		MAIN ROUTE	'DIVER TED'			WITHOUT WORK ZONE	WITH WORK ZONE	
MID-1 AM	569	0.0	3000	569	0	0.18	0	70.0	57.8	49.7
1-2 AM	407	0.0	3000	407	0	0.18	0	70.2	57.9	49.7
2-3 AM	355	0.0	3000	355	0	0.18	0	70.2	57.9	49.7
3-4 AM	409	0.0	3000	409	0	0.18	0	70.2	57.9	49.7
4-5 AM	614	0.0	3000	614	0	0.18	0	70.0	57.8	49.7
5-6 AM	1069	0.0	3000	1069	0	0.18	0	69.4	57.6	49.7
6-7 AM	1796	0.0	3000	1796	0	0.17	0	68.5	57.3	49.7
7-8 AM	2118	0.0	3000	2118	0	0.17	0	68.1	57.2	49.7
8-9 AM	2348	0.0	3000	2348	0	0.17	0	67.8	57.1	49.7
9-10 AM	2778	0.0	3000	2778	0	0.30	0	67.3	50.5	41.0
10-11 AM	2905	0.0	3000	2905	0	0.34	0	67.1	48.7	38.8
11AM-NOON	2888	0.0	3000	2888	0	0.33	0	67.1	49.0	39.1
NOON-1PM	2922	0.0	2999	2922	0	0.34	0	67.1	48.5	38.5
1-2 PM	3082	0.0	2999	3082	0	0.79	27	66.9	35.5	37.3
2-3 PM	3350	0.0	3000	3350	0	4.32	236	66.6	13.8	37.3
3-4 PM	3766	0.0	3000	3766	0	14.70	809	65.1	8.6	37.3
4-5 PM	3538	0.0	2999	3538	0	27.38	1492	66.3	7.5	37.3
5-6 PM	2966	0.0	2999	2966	0	32.12	1749	67.1	7.3	37.3
6-7 PM	2583	0.0	2999	2583	0	27.96	1520	67.5	7.5	37.3
7-8 PM	2134	0.0	2999	2134	0	15.98	881	68.1	8.5	38.9
8-9 PM	1673	0.0	3000	1673	0	0.55	71	68.7	43.2	49.7
9-10 PM	1433	0.0	3000	1433	0	0.17	0	68.9	57.4	49.7
10-11 PM	1146	0.0	3000	1146	0	0.18	0	69.3	57.6	49.7
11PM-MID	733	0.0	3000	733	0	0.18	0	69.8	57.8	49.7

----- SITE BREAKDOWN DELAYS -----

BREAKDOWN DURATION (MINS)	0
RANGE OF QUEUE DELAY - MIN (VEH-H) MAX	0.0
AV BREAKDOWNS PER DAY	0.00
AV QUEUE DELAY/DAY (VEH-H)	0.0
AV TOTAL DELAY/DAY (VEH-H)	0.0

----- SITE ACCIDENT DELAYS -----

BREAKDOWN DURATION (MINS)	0
RANGE OF QUEUE DELAY - MIN (VEH-H) MAX	0
AV BREAKDOWNS PER DAY	0
AV QUEUE DELAY/DAY (VEH-H)	0
AV TOTAL DELAY/DAY (VEH-H)	0

AVERAGE ACCIDENT NUMBERS (PIA/DAY)

MAIN ROUTE WITHOUT WORKS	0.0076
MAIN ROUTE WITH WORKS	0.0024
'DIVERSION'	0.0000

PIA: Personal Injury Accidents

ECONOMIC IMPACT ON ROAD USERS

ROAD USER COSTS PER DAY	\$83,603
CONGESTED HOURS PER DAY*	0

*Delays Exceeding User-Specified Maximum

**IH 94: MN 96 TO STH 35 N
CONTINUOUS (24 HOUR) CLOSURE
NO DIVERSION ROUTE (MAX QUEUE METHOD)**

MAY
Analyzed for 2009
Construction Season

GRAPHICAL REPRESENTATION OF TRAFFIC MODEL INPUT AND OUTPUT
MON-THUR EASTBOUND DIRECTION

