

**IH 94: STH 65 TO USH 12/STH 29 (DUNN AND ST CROIX COUNTIES)
CONTINUOUS (24 HOUR) CLOSURE
DIVERSION ROUTE: STH 128 - USH 12 - USH 63**

MAY
Analyzed for 2009
Construction Season

SUMMARY OF TRAFFIC MODEL OUTPUT
SATURDAY WESTBOUND DIRECTION

TIME OF DAY	FLOWS AND CAPACITY IN VEH/HR							AVERAGE SPEEDS IN MPH							
	MAIN ROUTE		ALTERNATE ROUTE		SITE CAPA CITY	FLOW MAIN ROUTE	FLOW DIVER -TING	TOTAL DIVN FLOW	AV.DEL PER VEH (MINS)	AVERAGE QUEUE (VEH)	MAIN ROUTE		SITE	ALTERNATE ROUTE	
	DEMAND FLOW	PCT HEAVY	NORMAL FLOW	PCT HEAVY							WITHOUT WORK ZN	WITH WORK ZN		WITHOUT WORK ZN	WITH WORK ZN
MID-1 AM	255	0.0	24	0.0	1500	255	0	24	0.45	0	65.9	62.4	44.5	39.4	39.4
1-2 AM	205	0.0	19	0.0	1500	205	0	19	0.44	0	66.0	62.5	44.6	39.5	39.5
2-3 AM	182	0.0	17	0.0	1500	182	0	17	0.44	0	66.1	62.6	44.8	39.6	39.6
3-4 AM	170	0.0	16	0.0	1500	170	0	16	0.44	0	66.1	62.6	44.8	39.6	39.6
4-5 AM	207	0.0	20	0.0	1500	207	0	20	0.44	0	66.0	62.5	44.6	39.5	39.5
5-6 AM	261	0.0	25	0.0	1500	261	0	25	0.45	0	65.9	62.4	44.5	39.4	39.4
6-7 AM	362	0.0	35	0.0	1500	362	0	35	0.46	0	65.7	62.2	44.0	39.3	39.3
7-8 AM	548	0.0	53	0.0	1500	548	0	53	0.48	0	65.4	61.7	43.3	39.1	39.1
8-9 AM	760	0.0	73	0.0	1500	760	0	73	0.50	0	65.0	61.2	42.5	38.8	38.8
9-10 AM	984	0.0	94	0.0	1500	984	0	94	0.52	0	64.5	60.7	41.7	38.6	38.6
10-11 AM	1165	0.0	113	0.0	1500	1165	0	113	0.59	0	64.2	59.9	39.6	38.3	38.3
11A-NOON	1193	0.0	115	0.0	1500	1193	0	115	0.63	0	64.1	59.6	38.7	38.3	38.3
NOON-1PM	1187	0.0	115	0.0	1500	1187	0	115	0.62	0	64.1	59.7	38.9	38.3	38.3
1-2 PM	1171	0.0	113	0.0	1500	1171	0	113	0.60	0	64.2	59.9	39.4	38.3	38.3
2-3 PM	1119	0.0	108	0.0	1500	1119	0	108	0.53	0	64.3	60.4	41.2	38.4	38.4
3-4 PM	1116	0.0	108	0.0	1500	1116	0	108	0.53	0	64.3	60.4	41.3	38.4	38.4
4-5 PM	1088	0.0	105	0.0	1500	1088	0	105	0.53	0	64.3	60.5	41.4	38.4	38.4
5-6 PM	949	0.0	91	0.0	1500	949	0	91	0.51	0	64.6	60.8	41.9	38.6	38.6
6-7 PM	818	0.0	79	0.0	1500	818	0	79	0.50	0	64.8	61.1	42.4	38.8	38.8
7-8 PM	701	0.0	67	0.0	1500	701	0	67	0.49	0	65.1	61.4	42.7	38.9	38.9
8-9 PM	648	0.0	62	0.0	1500	648	0	62	0.49	0	65.2	61.5	43.0	39.0	39.0
9-10 PM	538	0.0	52	0.0	1500	538	0	52	0.47	0	65.4	61.7	43.3	39.1	39.1
10-11 PM	407	0.0	40	0.0	1500	407	0	40	0.46	0	65.6	62.0	43.8	39.2	39.2
11PM-MID	245	0.0	23	0.0	1500	245	0	23	0.45	0	66.0	62.5	44.5	39.4	39.4

----- SITE BREAKDOWN DELAYS -----	
BREAKDOWN DURATION (MINS)	0
RANGE OF QUEUE DELAY - MIN (VEH-H) MAX	0.0
RANGE OF DIVN DELAY - MIN (VEH-H) MAX	0.0
AV BREAKDOWNS PER DAY	0.00
AV QUEUE DELAY/DAY (VEH-H)	0.0
AV DIVN DELAY/DAY (VEH-H)	0.0
AV TOTAL DELAY/DAY (VEH-H)	0.0

----- SITE ACCIDENT DELAYS -----	
ACCIDENT DURATION (MINS)	0
RANGE OF QUEUE DELAY - MIN (VEH-H) MAX	0.0
RANGE OF DIVN DELAY - MIN (VEH-H) MAX	0.0
AV ACCIDENTS PER DAY	0.00
AV QUEUE DELAY/DAY (VEH-H)	0.0
AV DIVN DELAY/DAY (VEH-H)	0.0
AV TOTAL DELAY/DAY (VEH-H)	0.0

AVERAGE ACCIDENT NUMBERS (PIA/DAY)	
MAIN ROUTE WITHOUT WORKS	0.0228
MAIN ROUTE WITH WORKS	0.0217
DIVERSION	0.0234

PIA: Personal Injury Accidents

IMPACTS ON ROAD USERS	
ROAD USER COSTS PER DAY (DOLLARS)	\$2,202
CONGESTED HOURS PER DAY*	0

*Delays Exceeding 15 Minutes

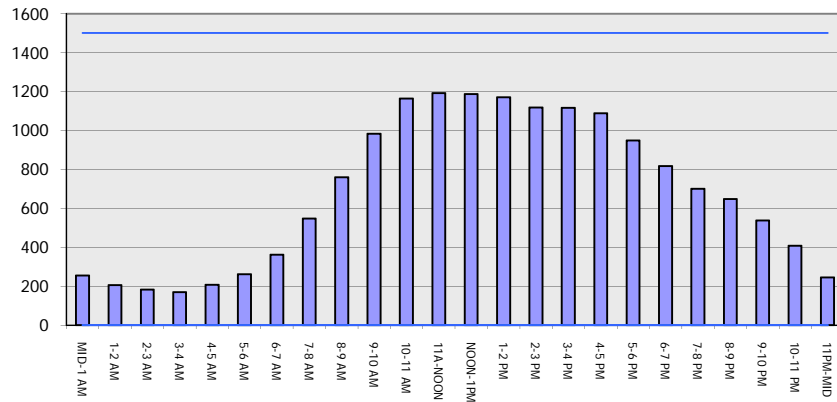
IH 94: STH 65 TO USH 12/STH 29 (DUNN AND ST CROIX COUNTIES)
CONTINUOUS (24 HOUR) CLOSURE
DIVERSION ROUTE: STH 128 - USH 12 - USH 63

MAY
 Analyzed for 2009
 Construction Season

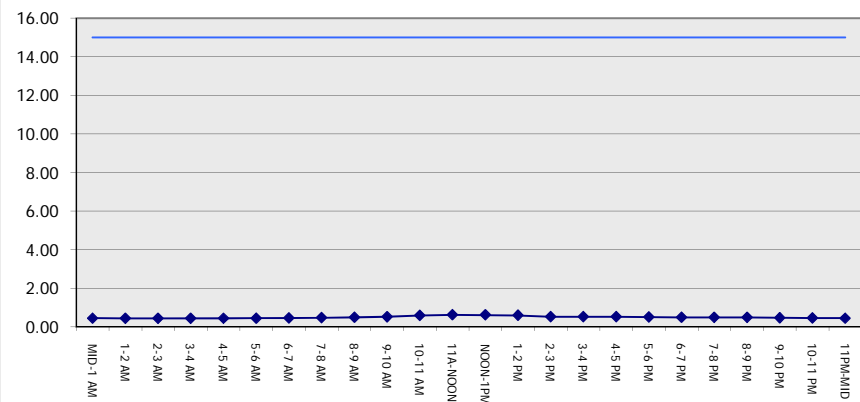
GRAPHICAL REPRESENTATION OF TRAFFIC MODEL INPUT AND OUTPUT

SATURDAY WESTBOUND DIRECTION

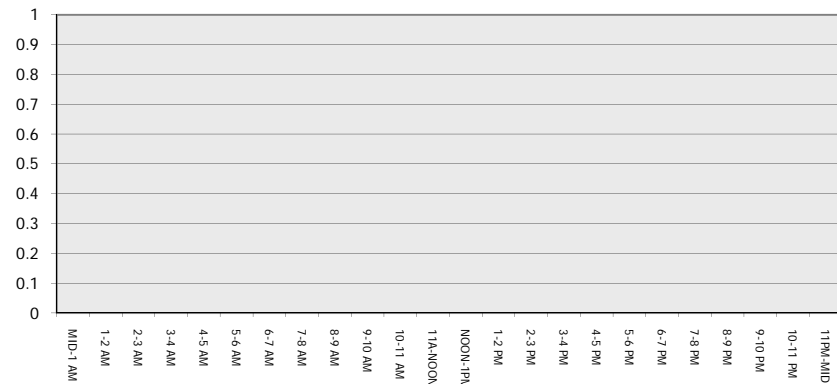
Main Route - Traffic Demand (Vehicles Per Hour)



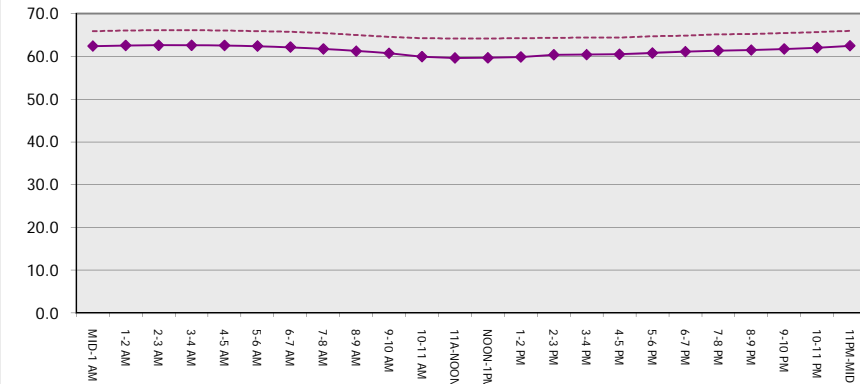
Main Route Average Delay Per Vehicle (Minutes)



Main Route - Average Queue Length (Vehicles)



Main Route - Average Speed (MPH)



IH 94: STH 65 TO USH 12/STH 29 (DUNN AND ST CROIX COUNTIES) CONTINUOUS (24 HOUR) CLOSURE DIVERSION ROUTE: STH 128 - USH 12 - USH 63	MAY
	Analyzed for 2009 Construction Season

SUMMARY OF TRAFFIC MODEL OUTPUT

SATURDAY EASTBOUND DIRECTION

TIME OF DAY	FLOWS AND CAPACITY IN VEH/HR								AVERAGE SPEEDS IN MPH						
	MAIN		DIVERSION		SITE CAPA CITY	FLOW MAIN ROUTE	FLOW DIVER -TING	TOTAL DIVN FLOW	AV.DEL PER VEH (MINS)	AVERAGE QUEUE (VEH)	MAIN ROUTE		SITE	ALTERNATE ROUTE	
	DEMAND FLOW	PCT HEAVY	NORMAL FLOW	PCT HEAVY							WITHOUT WORK ZN	WITH WORK ZN		WITHOUT WORK ZN	WITH WORK ZN
MID-1 AM	247	0.0	23	0.0	1500	247	0	23	0.45	0	66.0	62.4	44.5	39.4	39.4
1-2 AM	161	0.0	15	0.0	1500	161	0	15	0.44	0	66.1	62.7	44.8	39.6	39.6
2-3 AM	128	0.0	12	0.0	1500	128	0	12	0.43	0	66.1	62.7	45.0	39.6	39.6
3-4 AM	130	0.0	12	0.0	1500	130	0	12	0.44	0	66.1	62.7	45.0	39.6	39.6
4-5 AM	191	0.0	18	0.0	1500	191	0	18	0.44	0	66.0	62.6	44.7	39.5	39.5
5-6 AM	272	0.0	26	0.0	1500	272	0	26	0.45	0	65.9	62.4	44.4	39.4	39.4
6-7 AM	507	0.0	49	0.0	1500	507	0	49	0.47	0	65.5	61.9	43.5	39.1	39.1
7-8 AM	875	0.0	84	0.0	1500	875	0	84	0.51	0	64.8	61.0	42.1	38.7	38.7
8-9 AM	1120	0.0	108	0.0	1500	1120	0	108	0.53	0	64.3	60.4	41.2	38.4	38.4
9-10 AM	1342	0.0	129	0.0	1500	1342	0	129	0.82	0	63.9	58.1	34.4	38.1	38.1
10-11 AM	1407	0.0	135	0.0	1500	1407	0	135	0.90	0	63.8	57.5	32.8	38.1	38.1
11A-NOON	1336	0.0	129	0.0	1500	1336	0	129	0.81	0	63.9	58.2	34.5	38.1	38.1
NOON-1PM	1180	0.0	114	0.0	1500	1180	0	114	0.61	0	64.2	59.7	39.1	38.3	38.3
1-2 PM	1063	0.0	103	0.0	1500	1063	0	103	0.53	0	64.4	60.5	41.5	38.4	38.4
2-3 PM	1041	0.0	100	0.0	1500	1041	0	100	0.52	0	64.5	60.5	41.5	38.5	38.5
3-4 PM	1046	0.0	100	0.0	1500	1046	0	100	0.52	0	64.5	60.5	41.5	38.5	38.5
4-5 PM	1011	0.0	97	0.0	1500	1011	0	97	0.52	0	64.5	60.7	41.7	38.6	38.6
5-6 PM	868	0.0	83	0.0	1500	868	0	83	0.51	0	64.8	61.0	42.2	38.7	38.7
6-7 PM	751	0.0	72	0.0	1500	751	0	72	0.50	0	65.0	61.2	42.5	38.9	38.9
7-8 PM	641	0.0	62	0.0	1500	641	0	62	0.48	0	65.2	61.5	43.0	39.0	39.0
8-9 PM	512	0.0	50	0.0	1500	512	0	50	0.47	0	65.5	61.8	43.5	39.1	39.1
9-10 PM	478	0.0	46	0.0	1500	478	0	46	0.47	0	65.5	61.9	43.6	39.2	39.2
10-11 PM	365	0.0	36	0.0	1500	365	0	36	0.46	0	65.7	62.2	44.0	39.3	39.3
11PM-MID	247	0.0	23	0.0	1500	247	0	23	0.45	0	66.0	62.4	44.5	39.4	39.4

----- SITE BREAKDOWN DELAYS -----	
BREAKDOWN DURATION (MINS)	0
RANGE OF QUEUE DELAY - MIN	0.0
(VEH-H) MAX	0.0
RANGE OF DIVN DELAY - MIN	0.0
(VEH-H) MAX	0.0
AV BREAKDOWNS PER DAY	0.00
AV QUEUE DELAY/DAY (VEH-H)	0.0
AV DIVN DELAY/DAY (VEH-H)	0.0
AV TOTAL DELAY/DAY (VEH-H)	0.0

----- SITE ACCIDENT DELAYS -----	
ACCIDENT DURATION (MINS)	0
RANGE OF QUEUE DELAY - MIN	0.0
(VEH-H) MAX	0.0
RANGE OF DIVN DELAY - MIN	0.0
(VEH-H) MAX	0.0
AV ACCIDENTS PER DAY	0.00
AV QUEUE DELAY/DAY (VEH-H)	0.0
AV DIVN DELAY/DAY (VEH-H)	0.0
AV TOTAL DELAY/DAY (VEH-H)	0.0

AVERAGE ACCIDENT NUMBERS (PIA/DAY)	
MAIN ROUTE WITHOUT WORKS	0.0237
MAIN ROUTE WITH WORKS	0.0226
DIVERSION	0.0243

PIA: Personal Injury Accidents

IMPACTS ON ROAD USERS	
ROAD USER COSTS PER DAY (DOLLARS)	\$2,549
CONGESTED HOURS PER DAY*	0

*Delays Exceeding 15 Minutes

IH 94: STH 65 TO USH 12/STH 29 (DUNN AND ST CROIX COUNTIES)
CONTINUOUS (24 HOUR) CLOSURE
DIVERSION ROUTE: STH 128 - USH 12 - USH 63

MAY
 Analyzed for 2009
 Construction Season

GRAPHICAL REPRESENTATION OF TRAFFIC MODEL INPUT AND OUTPUT
SATURDAY EASTBOUND DIRECTION

