

**IH 94: STH 65 TO USH 12/STH 29 (DUNN AND ST CROIX COUNTIES)  
CONTINUOUS (24 HOUR) CLOSURE  
DIVERSION ROUTE: STH 128 - USH 12 - USH 63**

**MAY**  
Analyzed for 2009  
Construction Season

**SUMMARY OF TRAFFIC MODEL OUTPUT**  
**FRIDAY WESTBOUND DIRECTION**

TIME OF DAY	FLOWS AND CAPACITY IN VEH/HR						AVERAGE SPEEDS IN MPH								
	MAIN ROUTE		ALTERNATE ROUTE		SITE CAPA CITY	FLOW MAIN ROUTE	FLOW DIVER -TING	TOTAL DIVN FLOW	AV.DEL PER VEH (MINS)	AVERAGE QUEUE (VEH)	MAIN ROUTE		ALTERNATE ROUTE		
	DEMAND FLOW	PCT HEAVY	NORMAL FLOW	PCT HEAVY							WITHOUT WORK ZN	WITH WORK ZN	SITE	WITHOUT WORK ZN	WITH WORK ZN
MID-1 AM	255	0.0	24	0.0	1500	255	0	24	0.45	0	65.9	62.4	44.5	39.4	39.4
1-2 AM	238	0.0	23	0.0	1500	238	0	23	0.45	0	66.0	62.5	44.5	39.4	39.4
2-3 AM	231	0.0	22	0.0	1500	231	0	22	0.44	0	66.0	62.5	44.6	39.5	39.5
3-4 AM	262	0.0	25	0.0	1500	262	0	25	0.45	0	65.9	62.4	44.4	39.4	39.4
4-5 AM	428	0.0	42	0.0	1500	428	0	42	0.46	0	65.6	62.0	43.8	39.2	39.2
5-6 AM	736	0.0	71	0.0	1500	736	0	71	0.49	0	65.0	61.3	42.6	38.9	38.9
6-7 AM	983	0.0	94	0.0	1500	983	0	94	0.52	0	64.6	60.7	41.7	38.6	38.6
7-8 AM	977	0.0	94	0.0	1500	977	0	94	0.52	0	64.6	60.7	41.7	38.6	38.6
8-9 AM	897	0.0	86	0.0	1500	897	0	86	0.51	0	64.7	60.9	42.0	38.7	38.7
9-10 AM	926	0.0	89	0.0	1500	926	0	89	0.51	0	64.6	60.9	41.9	38.6	38.6
10-11 AM	961	0.0	92	0.0	1500	961	0	92	0.52	0	64.6	60.7	41.8	38.6	38.6
11A-NOON	1049	0.0	100	0.0	1500	1049	0	100	0.52	0	64.5	60.5	41.5	38.5	38.5
NOON-1PM	1173	0.0	113	0.0	1500	1173	0	113	0.60	0	64.2	59.8	39.3	38.3	38.3
1-2 PM	1311	0.0	126	0.0	1500	1311	0	126	0.78	0	64.0	58.4	35.2	38.2	38.2
2-3 PM	1353	0.0	130	0.0	1500	1353	0	130	0.83	0	63.8	58.0	34.2	38.1	38.1
3-4 PM	1434	0.0	138	0.0	1500	1434	0	138	0.94	0	63.7	57.2	32.2	38.0	38.0
4-5 PM	1449	0.0	139	0.0	1500	1449	0	139	0.96	0	63.7	57.1	31.9	38.0	38.0
5-6 PM	1388	0.0	134	0.0	1500	1388	0	134	0.88	0	63.8	57.7	33.3	38.1	38.1
6-7 PM	1208	0.0	117	0.0	1500	1208	0	117	0.65	0	64.1	59.4	38.2	38.3	38.3
7-8 PM	1004	0.0	96	0.0	1500	1004	0	96	0.52	0	64.5	60.7	41.7	38.6	38.6
8-9 PM	913	0.0	88	0.0	1500	913	0	88	0.51	0	64.7	60.9	42.0	38.6	38.6
9-10 PM	776	0.0	75	0.0	1500	776	0	75	0.50	0	65.0	61.2	42.5	38.8	38.8
10-11 PM	621	0.0	60	0.0	1500	621	0	60	0.48	0	65.2	61.5	43.0	39.0	39.0
11PM-MID	405	0.0	39	0.0	1500	405	0	39	0.46	0	65.6	62.0	43.9	39.2	39.2

*----- SITE BREAKDOWN DELAYS -----*	
BREAKDOWN DURATION (MINS)	0
RANGE OF QUEUE DELAY - MIN	0.0
(VEH-H) MAX	0.0
RANGE OF DIVN DELAY - MIN	0.0
(VEH-H) MAX	0.0
AV BREAKDOWNS PER DAY	0.00
AV QUEUE DELAY/DAY (VEH-H)	0.0
AV DIVN DELAY/DAY (VEH-H)	0.0
AV TOTAL DELAY/DAY (VEH-H)	0.0

*----- SITE ACCIDENT DELAYS -----*	
ACCIDENT DURATION (MINS)	0
RANGE OF QUEUE DELAY - MIN	0.0
(VEH-H) MAX	0.0
RANGE OF DIVN DELAY - MIN	0.0
(VEH-H) MAX	0.0
AV ACCIDENTS PER DAY	0.00
AV QUEUE DELAY/DAY (VEH-H)	0.0
AV DIVN DELAY/DAY (VEH-H)	0.0
AV TOTAL DELAY/DAY (VEH-H)	0.0

AVERAGE ACCIDENT NUMBERS (PIA/DAY)	
MAIN ROUTE WITHOUT WORKS	0.0294
MAIN ROUTE WITH WORKS	0.0280
DIVERSION	0.0301

PIA: Personal Injury Accidents

IMPACTS ON ROAD USERS	
ROAD USER COSTS PER DAY ( DOLLARS)	\$3,215
CONGESTED HOURS PER DAY*	0

\*Delays Exceeding 15 Minutes

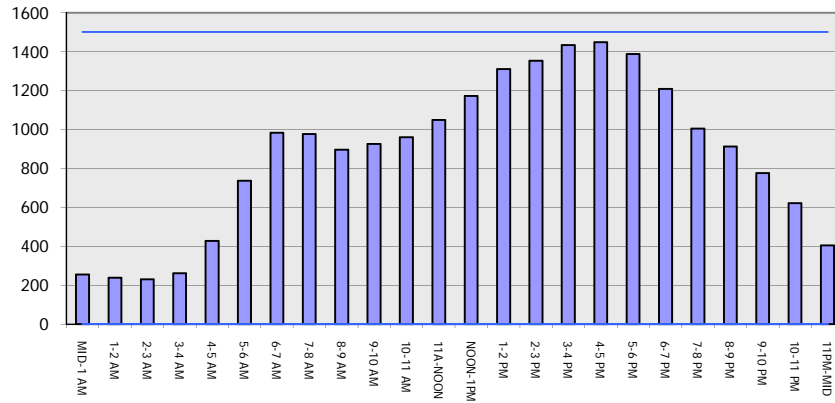
**IH 94: STH 65 TO USH 12/STH 29 (DUNN AND ST CROIX COUNTIES)**  
**CONTINUOUS (24 HOUR) CLOSURE**  
**DIVERSION ROUTE: STH 128 - USH 12 - USH 63**

**MAY**  
 Analyzed for 2009  
 Construction Season

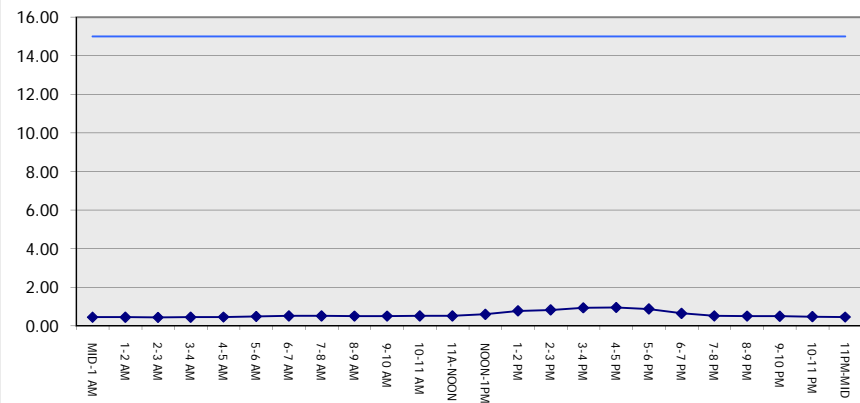
**GRAPHICAL REPRESENTATION OF TRAFFIC MODEL INPUT AND OUTPUT**

**FRIDAY WESTBOUND DIRECTION**

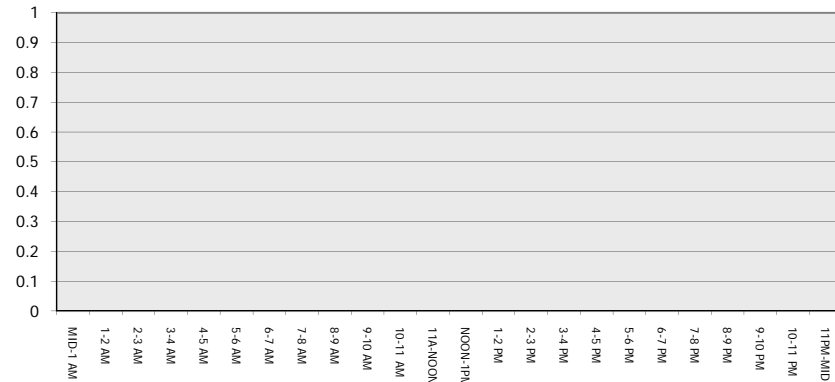
**Main Route - Traffic Demand (Vehicles Per Hour)**



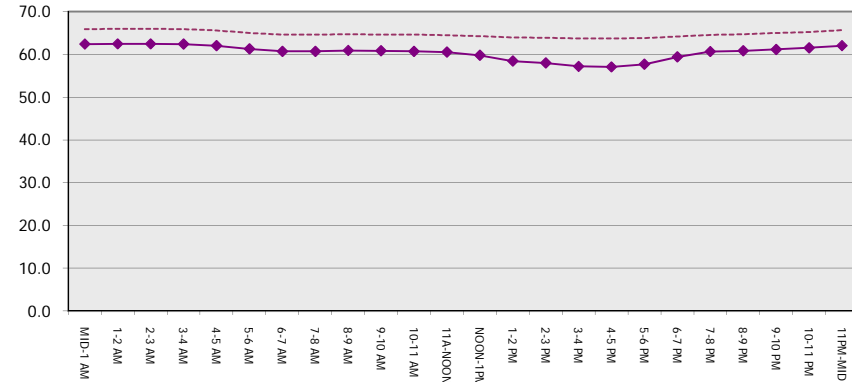
**Main Route Average Delay Per Vehicle (Minutes)**



**Main Route - Average Queue Length (Vehicles)**



**Main Route - Average Speed (MPH)**



<b>IH 94: STH 65 TO USH 12/STH 29 (DUNN AND ST CROIX COUNTIES)</b> <b>CONTINUOUS (24 HOUR) CLOSURE</b> <b>DIVERSION ROUTE: STH 128 - USH 12 - USH 63</b>	<b>MAY</b>
	Analyzed for 2009 Construction Season

**SUMMARY OF TRAFFIC MODEL OUTPUT**

FRIDAY EASTBOUND DIRECTION

TIME OF DAY	FLOWS AND CAPACITY IN VEH/HR								AVERAGE SPEEDS IN MPH						
	MAIN		DIVERSION		SITE CAPA CITY	FLOW MAIN ROUTE	FLOW DIVER -TING	TOTAL DIVN FLOW	AV.DEL PER VEH (MINS)	AVERAGE QUEUE (VEH)	MAIN ROUTE		SITE	ALTERNATE ROUTE	
	DEMAND FLOW	PCT HEAVY	NORMAL FLOW	PCT HEAVY							WITHOUT WORK ZN	WITH WORK ZN		WITHOUT WORK ZN	WITH WORK ZN
MID-1 AM	246	0.0	23	0.0	1500	246	0	23	0.45	0	66.0	62.5	44.5	39.4	39.4
1-2 AM	160	0.0	15	0.0	1500	160	0	15	0.44	0	66.1	62.7	44.8	39.6	39.6
2-3 AM	156	0.0	15	0.0	1500	156	0	15	0.44	0	66.1	62.7	44.8	39.6	39.6
3-4 AM	152	0.0	14	0.0	1500	152	0	14	0.44	0	66.1	62.7	44.9	39.6	39.6
4-5 AM	226	0.0	21	0.0	1500	226	0	21	0.44	0	66.0	62.5	44.6	39.5	39.5
5-6 AM	350	0.0	33	0.0	1500	350	0	33	0.46	0	65.8	62.2	44.1	39.3	39.3
6-7 AM	592	0.0	57	0.0	1500	592	0	57	0.48	0	65.3	61.6	43.2	39.1	39.1
7-8 AM	886	0.0	85	0.0	1500	886	0	85	0.51	0	64.7	60.9	42.1	38.7	38.7
8-9 AM	999	0.0	96	0.0	1500	999	0	96	0.52	0	64.5	60.7	41.7	38.6	38.6
9-10 AM	1248	0.0	120	0.0	1500	1248	0	120	0.70	0	64.1	59.1	37.0	38.3	38.3
10-11 AM	1381	0.0	133	0.0	1500	1381	0	133	0.87	0	63.8	57.8	33.4	38.1	38.1
11A-NOON	1439	0.0	138	0.0	1499	1439	0	138	0.95	0	63.7	57.2	32.1	38.0	38.0
NOON-1PM	1529	0.0	147	0.0	1499	1529	0	147	1.32	8	63.5	54.8	30.9	37.9	37.9
1-2 PM	1758	0.0	169	0.0	1500	1758	0	169	6.34	155	63.1	35.9	30.8	37.6	37.6
2-3 PM	1772	0.0	171	0.0	1499	1561	211	381	13.39	335	63.1	24.3	30.8	37.6	35.0
3-4 PM	1948	0.0	188	0.0	1500	1546	402	589	15.08	382	62.8	22.5	30.8	37.4	32.4
4-5 PM	1985	0.0	191	0.0	1499	1504	481	672	15.84	402	62.7	21.7	30.8	37.4	31.4
5-6 PM	1905	0.0	184	0.0	1499	1476	430	613	15.31	388	62.8	22.2	30.8	37.4	32.1
6-7 PM	1828	0.0	176	0.0	1500	1468	360	536	14.64	369	63.0	22.9	30.8	37.6	33.1
7-8 PM	1271	0.0	123	0.0	1499	1237	34	157	9.12	231	64.0	30.4	32.3	38.2	37.8
8-9 PM	852	0.0	82	0.0	1500	852	0	82	0.69	6	64.8	59.7	42.2	38.8	38.8
9-10 PM	630	0.0	61	0.0	1500	630	0	61	0.48	0	65.2	61.5	43.0	39.0	39.0
10-11 PM	517	0.0	50	0.0	1500	517	0	50	0.47	0	65.4	61.8	43.5	39.1	39.1
11PM-MID	388	0.0	38	0.0	1500	388	0	38	0.46	0	65.6	62.1	44.0	39.2	39.2

*----- SITE BREAKDOWN DELAYS -----*	
BREAKDOWN DURATION (MINS)	0
RANGE OF QUEUE DELAY - MIN	0.0
(VEH-H) MAX	0.0
RANGE OF DIVN DELAY - MIN	0.0
(VEH-H) MAX	0.0
AV BREAKDOWNS PER DAY	0.00
AV QUEUE DELAY/DAY (VEH-H)	0.0
AV DIVN DELAY/DAY (VEH-H)	0.0
AV TOTAL DELAY/DAY (VEH-H)	0.0

*----- SITE ACCIDENT DELAYS -----*	
ACCIDENT DURATION (MINS)	0
RANGE OF QUEUE DELAY - MIN	0.0
(VEH-H) MAX	0.0
RANGE OF DIVN DELAY - MIN	0.0
(VEH-H) MAX	0.0
AV ACCIDENTS PER DAY	0.00
AV QUEUE DELAY/DAY (VEH-H)	0.0
AV DIVN DELAY/DAY (VEH-H)	0.0
AV TOTAL DELAY/DAY (VEH-H)	0.0

AVERAGE ACCIDENT NUMBERS (PIA/DAY)	
MAIN ROUTE WITHOUT WORKS	0.0339
MAIN ROUTE WITH WORKS	0.0298
DIVERSION	0.0634

PIA: Personal Injury Accidents

IMPACTS ON ROAD USERS	
ROAD USER COSTS PER DAY ( DOLLARS)	\$41,079
CONGESTED HOURS PER DAY*	3

\*Delays Exceeding 15 Minutes

**IH 94: STH 65 TO USH 12/STH 29 (DUNN AND ST CROIX COUNTIES)  
 CONTINUOUS (24 HOUR) CLOSURE  
 DIVERSION ROUTE: STH 128 - USH 12 - USH 63**

**MAY**  
 Analyzed for 2009  
 Construction Season

**GRAPHICAL REPRESENTATION OF TRAFFIC MODEL INPUT AND OUTPUT**  
**FRIDAY EASTBOUND DIRECTION**

