

**STH 29: CTH H TO STH 73 (CHIPPEWA AND CLARK COUNTIES)
CONTINUOUS (24 HOUR) CLOSURE
NO DIVERSION ROUTE (MAX QUEUE METHOD)**

OCTOBER
Analyzed for 2009
Construction Season

SUMMARY OF TRAFFIC MODEL OUTPUT
SATURDAY SOUTHBOUND DIRECTION

TIME OF DAY	FLOWS AND CAPACITY IN VEH/HR						AVERAGE SPEEDS IN MPH			
	MAIN ROUTE		SITE CAPA CITY	FLOW		AV.DEL PER VEH (MINS)	AVERAGE QUEUE (VEH)	MAIN ROUTE		SITE
	DEMAND FLOW	PCT HEAVY		MAIN ROUTE	'DIVER TED'			WITHOUT WORK ZONE	WITH WORK ZONE	
MID-1 AM	52	0.0	1500	52	0	0.50	0	63.8	59.1	41.8
1-2 AM	31	0.0	1500	31	0	0.50	0	63.8	59.1	41.9
2-3 AM	37	0.0	1500	37	0	0.50	0	63.8	59.1	41.9
3-4 AM	28	0.0	1500	28	0	0.50	0	63.8	59.1	41.9
4-5 AM	47	0.0	1500	47	0	0.50	0	63.8	59.1	41.9
5-6 AM	76	0.0	1500	76	0	0.51	0	63.8	59.0	41.7
6-7 AM	107	0.0	1500	107	0	0.51	0	63.7	58.9	41.6
7-8 AM	191	0.0	1500	191	0	0.52	0	63.5	58.7	41.4
8-9 AM	316	0.0	1500	316	0	0.53	0	63.3	58.4	40.9
9-10 AM	425	0.0	1500	425	0	0.54	0	63.1	58.2	40.6
10-11 AM	520	0.0	1500	520	0	0.55	0	62.9	57.9	40.2
11AM-NOON	477	0.0	1500	477	0	0.54	0	63.0	58.1	40.4
NOON-1PM	395	0.0	1500	395	0	0.54	0	63.2	58.2	40.6
1-2 PM	363	0.0	1500	363	0	0.53	0	63.2	58.3	40.7
2-3 PM	372	0.0	1500	372	0	0.53	0	63.2	58.3	40.7
3-4 PM	335	0.0	1500	335	0	0.53	0	63.3	58.4	40.9
4-5 PM	300	0.0	1500	300	0	0.53	0	63.3	58.5	41.0
5-6 PM	275	0.0	1500	275	0	0.52	0	63.4	58.6	41.0
6-7 PM	243	0.0	1500	243	0	0.52	0	63.5	58.6	41.2
7-8 PM	218	0.0	1500	218	0	0.52	0	63.5	58.7	41.2
8-9 PM	164	0.0	1500	164	0	0.51	0	63.6	58.8	41.4
9-10 PM	132	0.0	1500	132	0	0.51	0	63.7	58.9	41.5
10-11 PM	117	0.0	1500	117	0	0.51	0	63.7	58.9	41.6
11PM-MID	70	0.0	1500	70	0	0.51	0	63.8	59.1	41.7

----- SITE BREAKDOWN DELAYS -----

BREAKDOWN DURATION (MINS)	0
RANGE OF QUEUE DELAY - MIN (VEH-H) MAX	0.0
AV BREAKDOWNS PER DAY	0.00
AV QUEUE DELAY/DAY (VEH-H)	0.0
AV TOTAL DELAY/DAY (VEH-H)	0.0

----- SITE ACCIDENT DELAYS -----

BREAKDOWN DURATION (MINS)	0
RANGE OF QUEUE DELAY - MIN (VEH-H) MAX	0
AV BREAKDOWNS PER DAY	0
AV QUEUE DELAY/DAY (VEH-H)	0
AV TOTAL DELAY/DAY (VEH-H)	0

AVERAGE ACCIDENT NUMBERS (PIA/DAY)

MAIN ROUTE WITHOUT WORKS	0.0058
MAIN ROUTE WITH WORKS	0.0064
'DIVERSION'	0.0000

PIA: Personal Injury Accidents

IMPACTS ON ROAD USERS

ROAD USER COSTS PER DAY	\$716
CONGESTED HOURS PER DAY*	0

*Delays Exceeding User-Specified Maximum

**STH 29: CTH H TO STH 73 (CHIPPEWA AND CLARK COUNTIES)
 CONTINUOUS (24 HOUR) CLOSURE
 NO DIVERSION ROUTE (MAX QUEUE METHOD)**

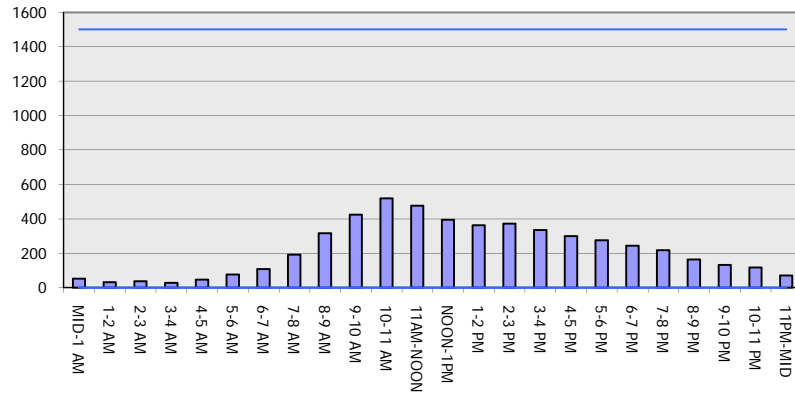
OCTOBER

Analyzed for 2009
 Construction Season

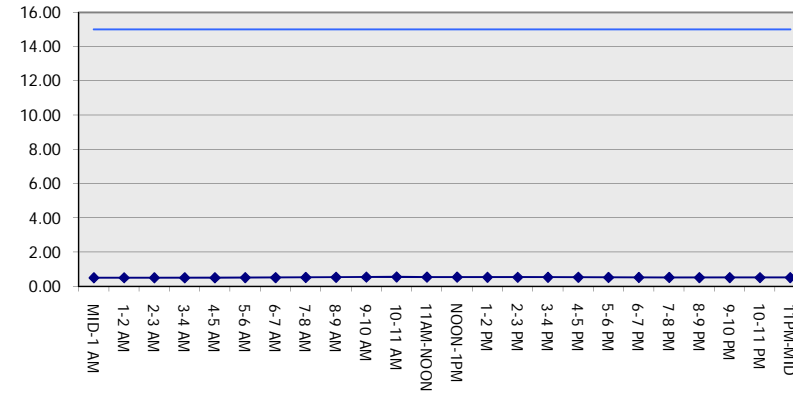
GRAPHICAL REPRESENTATION OF TRAFFIC MODEL INPUT AND OUTPUT

SATURDAY SOUTHBOUND DIRECTION

Main Route - Traffic Demand (Vehicles Per Hour)



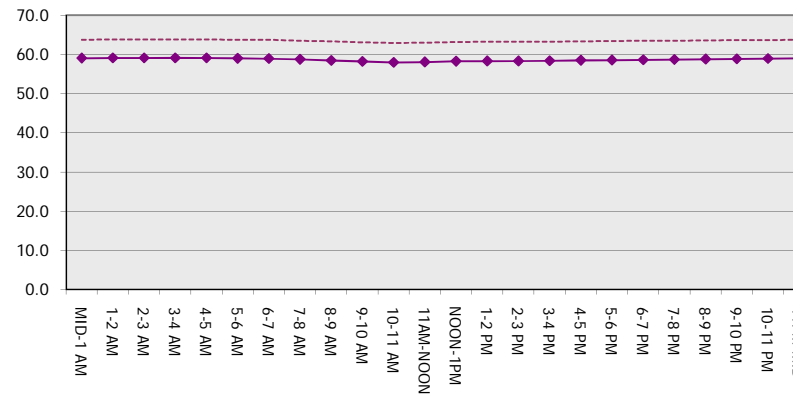
Main Route Average Delay Per Vehicle (Minutes)



Main Route - Average Queue Length (Vehicles)



Main Route - Average Speed (MPH)



STH 29: CTH H TO STH 73 (CHIPPEWA AND CLARK COUNTIES) CONTINUOUS (24 HOUR) CLOSURE NO DIVERSION ROUTE (MAX QUEUE METHOD)	OCTOBER
	Analyzed for 2009 Construction Season

SUMMARY OF TRAFFIC MODEL OUTPUT

SATURDAY NORTHBOUND DIRECTION

TIME OF DAY	FLOWS AND CAPACITY IN VEH/HR							AVERAGE SPEEDS IN MPH		
	MAIN ROUTE		SITE CAPA CITY	FLOW		AV.DEL PER VEH (MINS)	AVERAGE QUEUE (VEH)	MAIN ROUTE		SITE
	DEMAND FLOW	PCT HEAVY		MAIN ROUTE	'DIVER TED'			WITHOUT WORK ZONE	WITH WORK ZONE	
MID-1 AM	64	0.0	1500	64	0	0.50	0	63.8	59.1	41.8
1-2 AM	46	0.0	1500	46	0	0.50	0	63.8	59.1	41.9
2-3 AM	34	0.0	1500	34	0	0.50	0	63.8	59.1	41.9
3-4 AM	32	0.0	1500	32	0	0.50	0	63.8	59.1	41.9
4-5 AM	40	0.0	1500	40	0	0.50	0	63.8	59.1	41.9
5-6 AM	68	0.0	1500	68	0	0.51	0	63.8	59.1	41.7
6-7 AM	110	0.0	1500	110	0	0.51	0	63.7	58.9	41.6
7-8 AM	177	0.0	1500	177	0	0.52	0	63.6	58.7	41.4
8-9 AM	272	0.0	1500	272	0	0.52	0	63.4	58.6	41.0
9-10 AM	395	0.0	1500	395	0	0.54	0	63.2	58.2	40.6
10-11 AM	429	0.0	1500	429	0	0.54	0	63.1	58.2	40.6
11AM-NOON	453	0.0	1500	453	0	0.54	0	63.0	58.1	40.4
NOON-1PM	430	0.0	1500	430	0	0.54	0	63.1	58.2	40.6
1-2 PM	416	0.0	1500	416	0	0.54	0	63.2	58.2	40.6
2-3 PM	405	0.0	1500	405	0	0.54	0	63.2	58.2	40.6
3-4 PM	397	0.0	1500	397	0	0.54	0	63.2	58.2	40.6
4-5 PM	381	0.0	1500	381	0	0.53	0	63.2	58.3	40.7
5-6 PM	354	0.0	1500	354	0	0.53	0	63.2	58.4	40.8
6-7 PM	320	0.0	1500	320	0	0.53	0	63.3	58.4	40.9
7-8 PM	317	0.0	1500	317	0	0.53	0	63.3	58.4	40.9
8-9 PM	236	0.0	1500	236	0	0.52	0	63.5	58.6	41.2
9-10 PM	172	0.0	1500	172	0	0.52	0	63.6	58.8	41.4
10-11 PM	120	0.0	1500	120	0	0.51	0	63.7	58.9	41.6
11PM-MID	91	0.0	1500	91	0	0.51	0	63.7	59.0	41.7

----- SITE BREAKDOWN DELAYS -----	
BREAKDOWN DURATION (MINS)	0
RANGE OF QUEUE DELAY - MIN (VEH-H) MAX	0.0
AV BREAKDOWNS PER DAY	0.00
AV QUEUE DELAY/DAY (VEH-H)	0.0
AV TOTAL DELAY/DAY (VEH-H)	0.0

----- SITE ACCIDENT DELAYS -----	
BREAKDOWN DURATION (MINS)	0
RANGE OF QUEUE DELAY - MIN (VEH-H) MAX	0
AV BREAKDOWNS PER DAY	0
AV QUEUE DELAY/DAY (VEH-H)	0
AV TOTAL DELAY/DAY (VEH-H)	0

AVERAGE ACCIDENT NUMBERS (PIA/DAY)	
MAIN ROUTE WITHOUT WORKS	0.0064
MAIN ROUTE WITH WORKS	0.0070
'DIVERSION'	0.0000

PIA: Personal Injury Accidents

ECONOMIC IMPACT ON ROAD USERS	
ROAD USER COSTS PER DAY	\$782
CONGESTED HOURS PER DAY*	0

*Delays Exceeding User-Specified Maximum

**STH 29: CTH H TO STH 73 (CHIPPEWA AND CLARK COUNTIES)
 CONTINUOUS (24 HOUR) CLOSURE
 NO DIVERSION ROUTE (MAX QUEUE METHOD)**

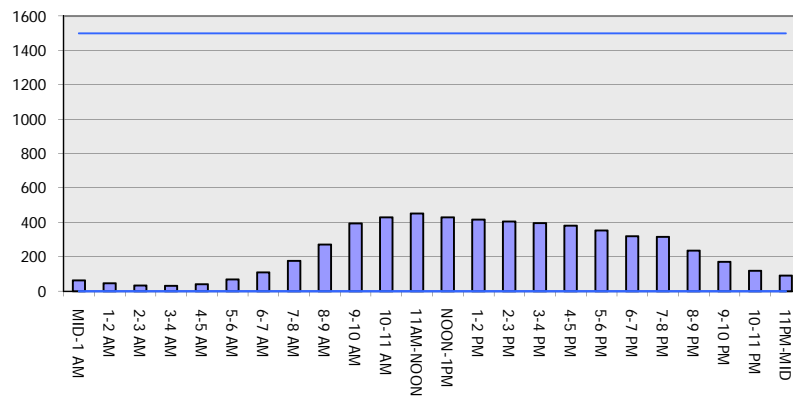
OCTOBER

Analyzed for 2009
 Construction Season

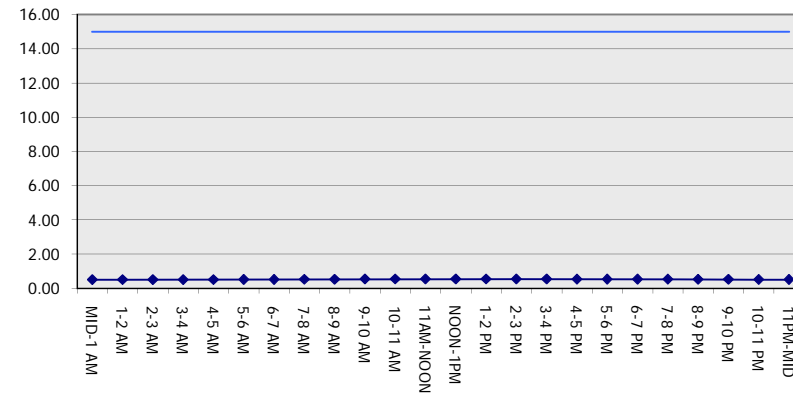
GRAPHICAL REPRESENTATION OF TRAFFIC MODEL INPUT AND OUTPUT

SATURDAY NORTHBOUND DIRECTION

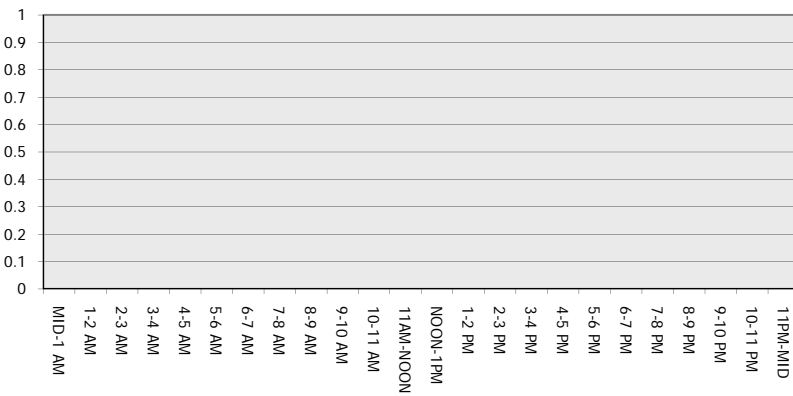
Main Route - Traffic Demand (Vehicles Per Hour)



Main Route Average Delay Per Vehicle (Minutes)



Main Route - Average Queue Length (Vehicles)



Main Route - Average Speed (MPH)

