

<b>STH 29: CTH H TO STH 73 (CHIPPEWA AND CLARK COUNTIES)                  CONTINUOUS (24 HOUR) CLOSURE                  NO DIVERSION ROUTE (MAX QUEUE METHOD)</b>	<b>OCTOBER</b>
	Analyzed for 2009 Construction Season

**SUMMARY OF TRAFFIC MODEL OUTPUT**

FRIDAY      SOUTHBOUND DIRECTION

TIME OF DAY	FLOWS AND CAPACITY IN VEH/HR						AVERAGE SPEEDS IN MPH			
	MAIN ROUTE		SITE CAPA CITY	FLOW		AV.DEL PER VEH (MINS)	AVERAGE QUEUE (VEH)	MAIN ROUTE		SITE
	DEMAND FLOW	PCT HEAVY		MAIN ROUTE	'DIVER TED'			WITHOUT WORK ZONE	WITH WORK ZONE	
MID-1 AM	47	0.0	1500	47	0	0.50	0	63.8	59.1	41.9
1-2 AM	39	0.0	1500	39	0	0.50	0	63.8	59.1	41.9
2-3 AM	43	0.0	1500	43	0	0.50	0	63.8	59.1	41.9
3-4 AM	57	0.0	1500	57	0	0.50	0	63.8	59.1	41.8
4-5 AM	92	0.0	1500	92	0	0.51	0	63.7	59.0	41.7
5-6 AM	141	0.0	1500	141	0	0.51	0	63.7	58.9	41.5
6-7 AM	225	0.0	1500	225	0	0.52	0	63.5	58.7	41.2
7-8 AM	295	0.0	1500	295	0	0.53	0	63.3	58.5	41.0
8-9 AM	329	0.0	1500	329	0	0.53	0	63.3	58.4	40.9
9-10 AM	387	0.0	1500	387	0	0.54	0	63.2	58.2	40.7
10-11 AM	430	0.0	1500	430	0	0.54	0	63.1	58.2	40.6
11AM-NOON	462	0.0	1500	462	0	0.54	0	63.0	58.1	40.4
NOON-1PM	512	0.0	1500	512	0	0.55	0	63.0	58.0	40.2
1-2 PM	570	0.0	1500	570	0	0.55	0	62.8	57.8	40.1
2-3 PM	599	0.0	1500	599	0	0.56	0	62.8	57.8	40.0
3-4 PM	614	0.0	1500	614	0	0.56	0	62.8	57.8	39.9
4-5 PM	631	0.0	1500	631	0	0.56	0	62.7	57.7	39.9
5-6 PM	582	0.0	1500	582	0	0.55	0	62.8	57.8	40.1
6-7 PM	516	0.0	1500	516	0	0.55	0	63.0	57.9	40.2
7-8 PM	373	0.0	1500	373	0	0.53	0	63.2	58.3	40.7
8-9 PM	289	0.0	1500	289	0	0.53	0	63.3	58.5	41.0
9-10 PM	190	0.0	1500	190	0	0.52	0	63.5	58.7	41.4
10-11 PM	153	0.0	1500	153	0	0.51	0	63.6	58.8	41.5
11PM-MID	67	0.0	1500	67	0	0.51	0	63.8	59.1	41.8

**\*----- SITE BREAKDOWN DELAYS -----\***

BREAKDOWN DURATION (MINS)	0
RANGE OF QUEUE DELAY - MIN (VEH-H) MAX	0.0
AV BREAKDOWNS PER DAY	0.00
AV QUEUE DELAY/DAY (VEH-H)	0.0
AV TOTAL DELAY/DAY (VEH-H)	0.0

**\*----- SITE ACCIDENT DELAYS -----\***

BREAKDOWN DURATION (MINS)	0
RANGE OF QUEUE DELAY - MIN (VEH-H) MAX	0
AV BREAKDOWNS PER DAY	0
AV QUEUE DELAY/DAY (VEH-H)	0
AV TOTAL DELAY/DAY (VEH-H)	0

**AVERAGE ACCIDENT NUMBERS (PIA/DAY)**

MAIN ROUTE WITHOUT WORKS	0.0084
MAIN ROUTE WITH WORKS	0.0093
'DIVERSION'	0.0000

PIA: Personal Injury Accidents

**IMPACTS ON ROAD USERS**

ROAD USER COSTS PER DAY	\$869
CONGESTED HOURS PER DAY*	0

\*Delays Exceeding User-Specified Maximum

**STH 29: CTH H TO STH 73 (CHIPPEWA AND CLARK COUNTIES)  
 CONTINUOUS (24 HOUR) CLOSURE  
 NO DIVERSION ROUTE (MAX QUEUE METHOD)**

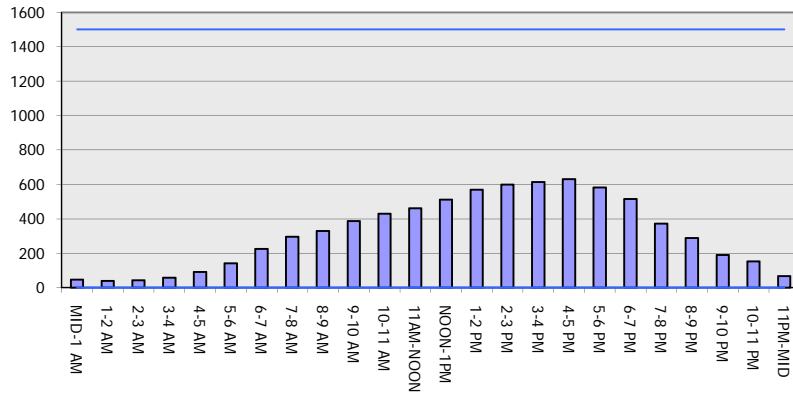
**OCTOBER**

Analyzed for 2009  
 Construction Season

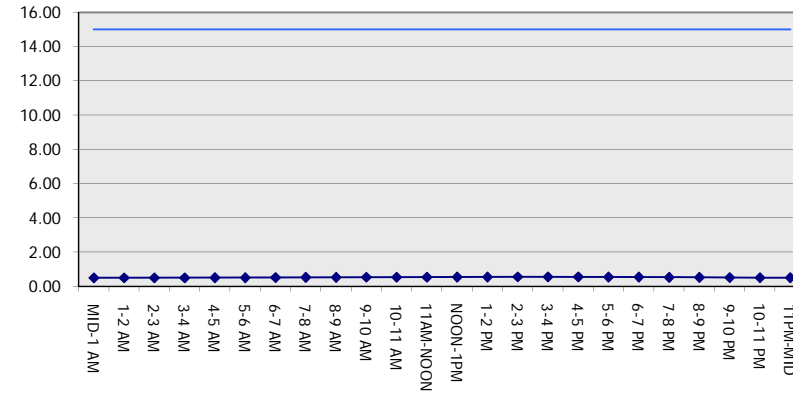
**GRAPHICAL REPRESENTATION OF TRAFFIC MODEL INPUT AND OUTPUT**

**FRIDAY SOUTHBOUND DIRECTION**

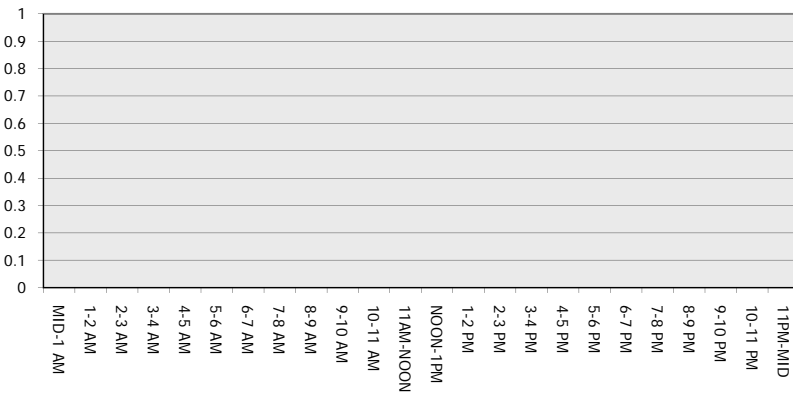
**Main Route - Traffic Demand (Vehicles Per Hour)**



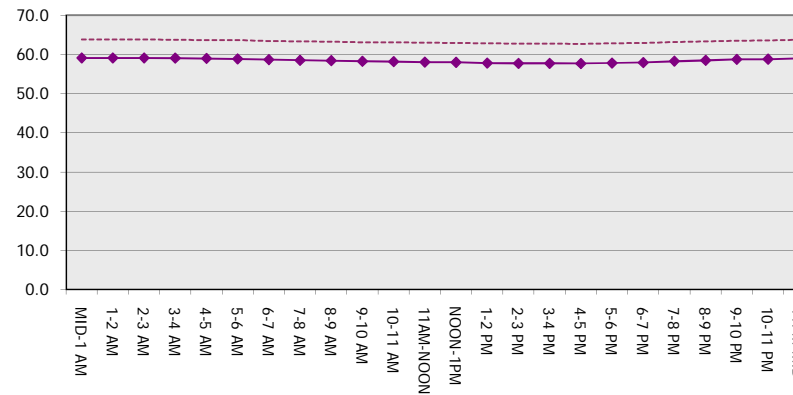
**Main Route Average Delay Per Vehicle (Minutes)**



**Main Route - Average Queue Length (Vehicles)**



**Main Route - Average Speed (MPH)**



<b>STH 29: CTH H TO STH 73 (CHIPPEWA AND CLARK COUNTIES)                  CONTINUOUS (24 HOUR) CLOSURE                  NO DIVERSION ROUTE (MAX QUEUE METHOD)</b>	<b>OCTOBER</b>
	Analyzed for 2009 Construction Season

**SUMMARY OF TRAFFIC MODEL OUTPUT**

FRIDAY NORTHBOUND DIRECTION

TIME OF DAY	FLOWS AND CAPACITY IN VEH/HR							AVERAGE SPEEDS IN MPH		
	MAIN ROUTE		SITE CAPA CITY	FLOW		AV.DEL PER VEH (MINS)	AVERAGE QUEUE (VEH)	MAIN ROUTE		SITE
	DEMAND FLOW	PCT HEAVY		MAIN ROUTE	'DIVER TED'			WITHOUT WORK ZONE	WITH WORK ZONE	
MID-1 AM	64	0.0	1500	64	0	0.50	0	63.8	59.1	41.8
1-2 AM	43	0.0	1500	43	0	0.50	0	63.8	59.1	41.9
2-3 AM	34	0.0	1500	34	0	0.50	0	63.8	59.1	41.9
3-4 AM	49	0.0	1500	49	0	0.50	0	63.8	59.1	41.9
4-5 AM	73	0.0	1500	73	0	0.51	0	63.8	59.1	41.7
5-6 AM	124	0.0	1500	124	0	0.51	0	63.7	58.9	41.5
6-7 AM	199	0.0	1500	199	0	0.52	0	63.5	58.7	41.3
7-8 AM	294	0.0	1500	294	0	0.53	0	63.3	58.5	41.0
8-9 AM	309	0.0	1500	309	0	0.53	0	63.3	58.4	40.9
9-10 AM	379	0.0	1500	379	0	0.53	0	63.2	58.3	40.7
10-11 AM	435	0.0	1500	435	0	0.54	0	63.1	58.2	40.5
11AM-NOON	505	0.0	1500	505	0	0.55	0	63.0	58.0	40.3
NOON-1PM	551	0.0	1500	551	0	0.55	0	62.8	57.9	40.1
1-2 PM	613	0.0	1500	613	0	0.56	0	62.8	57.8	39.9
2-3 PM	702	0.0	1500	702	0	0.57	0	62.6	57.5	39.6
3-4 PM	761	0.0	1500	761	0	0.57	0	62.5	57.4	39.4
4-5 PM	755	0.0	1500	755	0	0.57	0	62.5	57.4	39.5
5-6 PM	687	0.0	1500	687	0	0.56	0	62.6	57.6	39.7
6-7 PM	552	0.0	1500	552	0	0.55	0	62.8	57.9	40.1
7-8 PM	427	0.0	1500	427	0	0.54	0	63.1	58.2	40.6
8-9 PM	315	0.0	1500	315	0	0.53	0	63.3	58.4	40.9
9-10 PM	230	0.0	1500	230	0	0.52	0	63.5	58.6	41.2
10-11 PM	156	0.0	1500	156	0	0.51	0	63.6	58.8	41.4
11PM-MID	109	0.0	1500	109	0	0.51	0	63.7	58.9	41.6

*----- SITE BREAKDOWN DELAYS -----*	
BREAKDOWN DURATION (MINS)	0
RANGE OF QUEUE DELAY - MIN (VEH-H) MAX	0.0
AV BREAKDOWNS PER DAY	0.00
AV QUEUE DELAY/DAY (VEH-H)	0.0
AV TOTAL DELAY/DAY (VEH-H)	0.0

*----- SITE ACCIDENT DELAYS -----*	
BREAKDOWN DURATION (MINS)	0
RANGE OF QUEUE DELAY - MIN (VEH-H) MAX	0
AV BREAKDOWNS PER DAY	0
AV QUEUE DELAY/DAY (VEH-H)	0
AV TOTAL DELAY/DAY (VEH-H)	0

AVERAGE ACCIDENT NUMBERS (PIA/DAY)	
MAIN ROUTE WITHOUT WORKS	0.0092
MAIN ROUTE WITH WORKS	0.0101
'DIVERSION'	0.0000

PIA: Personal Injury Accidents

ECONOMIC IMPACT ON ROAD USERS	
ROAD USER COSTS PER DAY	\$961
CONGESTED HOURS PER DAY*	0

\*Delays Exceeding User-Specified Maximum

**STH 29: CTH H TO STH 73 (CHIPPEWA AND CLARK COUNTIES)  
 CONTINUOUS (24 HOUR) CLOSURE  
 NO DIVERSION ROUTE (MAX QUEUE METHOD)**

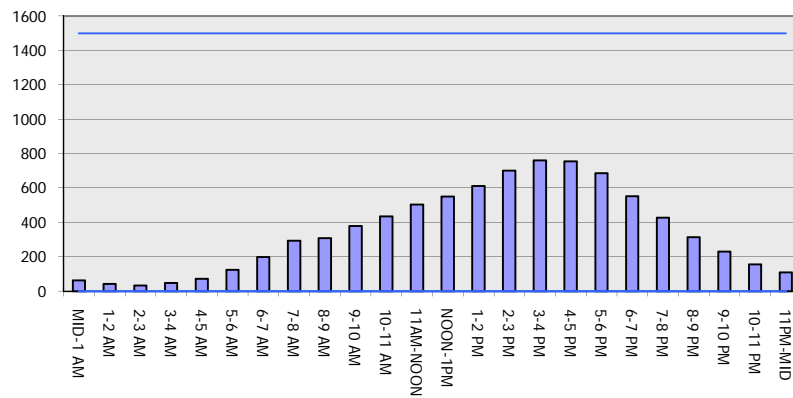
**OCTOBER**

Analyzed for 2009  
 Construction Season

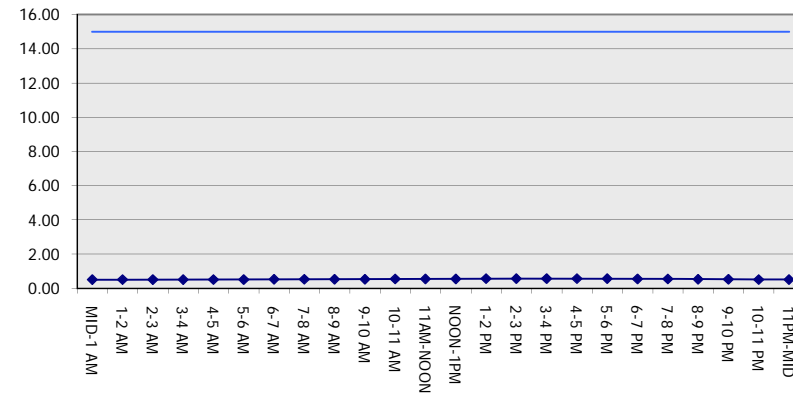
**GRAPHICAL REPRESENTATION OF TRAFFIC MODEL INPUT AND OUTPUT**

**FRIDAY NORTHBOUND DIRECTION**

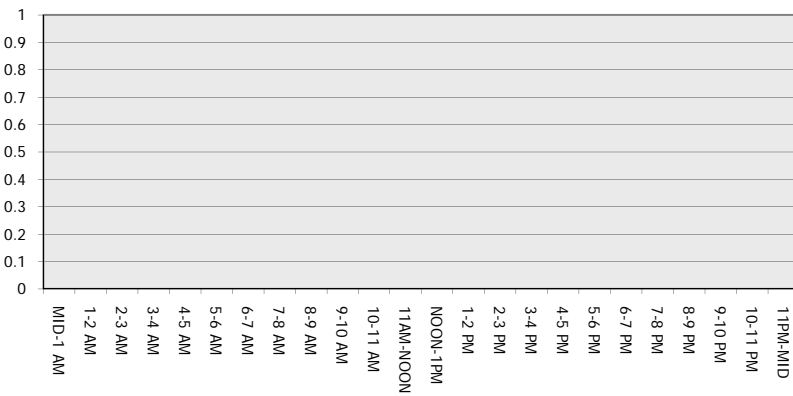
**Main Route - Traffic Demand (Vehicles Per Hour)**



**Main Route Average Delay Per Vehicle (Minutes)**



**Main Route - Average Queue Length (Vehicles)**



**Main Route - Average Speed (MPH)**

