

<b>STH 29: 40TH ST TO CTH T (CHIPPEWA COUNTY)                  CONTINUOUS (24 HOUR) CLOSURE                  NO DIVERSION ROUTE (MAX QUEUE METHOD)</b>	<b>OCTOBER</b>
	Analyzed for 2009 Construction Season

**SUMMARY OF TRAFFIC MODEL OUTPUT**

SUNDAY SOUTHBOUND DIRECTION

TIME OF DAY	FLOWS AND CAPACITY IN VEH/HR						AVERAGE SPEEDS IN MPH			
	MAIN ROUTE		SITE CAPA CITY	FLOW		AV.DEL PER VEH (MINS)	AVERAGE QUEUE (VEH)	MAIN ROUTE		SITE
	DEMAND FLOW	PCT HEAVY		MAIN ROUTE	'DIVER TED'			WITHOUT WORK ZONE	WITH WORK ZONE	
MID-1 AM	37	0.0	1500	37	0	0.50	0	63.8	50.9	41.9
1-2 AM	26	0.0	1500	26	0	0.50	0	63.8	50.9	41.9
2-3 AM	28	0.0	1500	28	0	0.50	0	63.8	50.9	41.9
3-4 AM	30	0.0	1500	30	0	0.50	0	63.8	50.9	41.9
4-5 AM	46	0.0	1500	46	0	0.50	0	63.8	50.9	41.9
5-6 AM	52	0.0	1500	52	0	0.50	0	63.8	50.9	41.8
6-7 AM	53	0.0	1500	53	0	0.50	0	63.8	50.9	41.8
7-8 AM	97	0.0	1500	97	0	0.51	0	63.7	50.7	41.7
8-9 AM	149	0.0	1500	149	0	0.51	0	63.7	50.5	41.5
9-10 AM	219	0.0	1500	219	0	0.52	0	63.5	50.3	41.2
10-11 AM	357	0.0	1500	357	0	0.53	0	63.2	49.9	40.7
11AM-NOON	415	0.0	1500	415	0	0.54	0	63.2	49.7	40.6
NOON-1PM	498	0.0	1500	498	0	0.55	0	63.0	49.5	40.3
1-2 PM	592	0.0	1500	592	0	0.55	0	62.8	49.2	40.0
2-3 PM	656	0.0	1500	656	0	0.56	0	62.7	49.0	39.8
3-4 PM	664	0.0	1500	664	0	0.56	0	62.7	49.0	39.7
4-5 PM	639	0.0	1500	639	0	0.56	0	62.7	49.1	39.9
5-6 PM	593	0.0	1500	593	0	0.55	0	62.8	49.2	40.0
6-7 PM	454	0.0	1500	454	0	0.54	0	63.0	49.6	40.4
7-8 PM	367	0.0	1500	367	0	0.53	0	63.2	49.9	40.7
8-9 PM	271	0.0	1500	271	0	0.52	0	63.4	50.2	41.0
9-10 PM	229	0.0	1500	229	0	0.52	0	63.5	50.3	41.2
10-11 PM	156	0.0	1500	156	0	0.51	0	63.6	50.5	41.4
11PM-MID	71	0.0	1500	71	0	0.51	0	63.8	50.8	41.7

**\*----- SITE BREAKDOWN DELAYS -----\***

BREAKDOWN DURATION (MINS)	0
RANGE OF QUEUE DELAY - MIN (VEH-H) MAX	0.0
AV BREAKDOWNS PER DAY	0.00
AV QUEUE DELAY/DAY (VEH-H)	0.0
AV TOTAL DELAY/DAY (VEH-H)	0.0

**\*----- SITE ACCIDENT DELAYS -----\***

BREAKDOWN DURATION (MINS)	0
RANGE OF QUEUE DELAY - MIN (VEH-H) MAX	0
AV BREAKDOWNS PER DAY	0
AV QUEUE DELAY/DAY (VEH-H)	0
AV TOTAL DELAY/DAY (VEH-H)	0

**AVERAGE ACCIDENT NUMBERS (PIA/DAY)**

MAIN ROUTE WITHOUT WORKS	0.0023
MAIN ROUTE WITH WORKS	0.0030
'DIVERSION'	0.0000

PIA: Personal Injury Accidents

**IMPACTS ON ROAD USERS**

ROAD USER COSTS PER DAY	\$945
CONGESTED HOURS PER DAY*	0

\*Delays Exceeding User-Specified Maximum

**STH 29: 40TH ST TO CTH T (CHIPPEWA COUNTY)  
CONTINUOUS (24 HOUR) CLOSURE  
NO DIVERSION ROUTE (MAX QUEUE METHOD)**

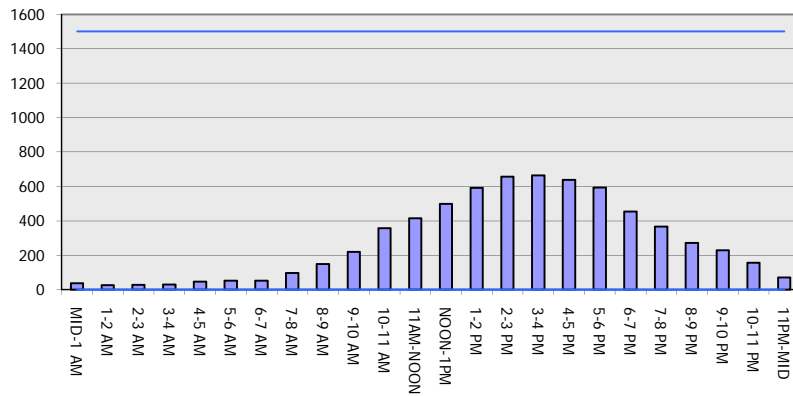
**OCTOBER**

Analyzed for 2009  
Construction Season

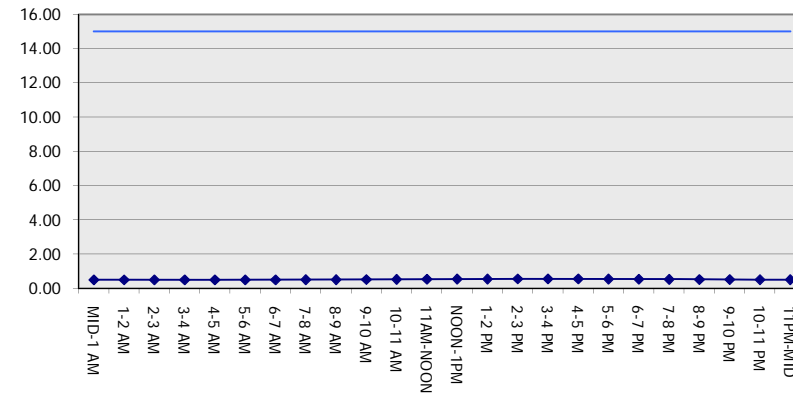
**GRAPHICAL REPRESENTATION OF TRAFFIC MODEL INPUT AND OUTPUT**

**SUNDAY SOUTHBOUND DIRECTION**

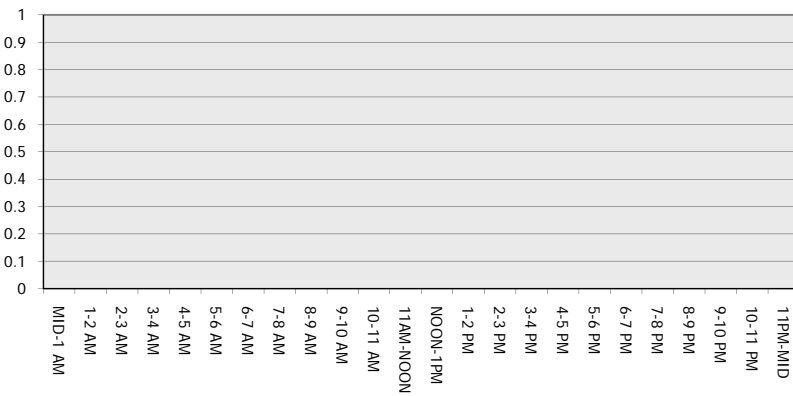
**Main Route - Traffic Demand (Vehicles Per Hour)**



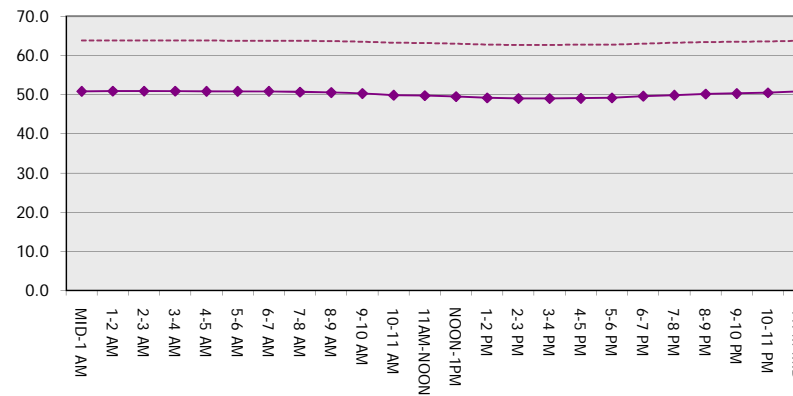
**Main Route Average Delay Per Vehicle (Minutes)**



**Main Route - Average Queue Length (Vehicles)**



**Main Route - Average Speed (MPH)**



<b>STH 29: 40TH ST TO CTH T (CHIPPEWA COUNTY)</b> <b>CONTINUOUS (24 HOUR) CLOSURE</b> <b>NO DIVERSION ROUTE (MAX QUEUE METHOD)</b>	<b>OCTOBER</b>
	Analyzed for 2009 Construction Season

**SUMMARY OF TRAFFIC MODEL OUTPUT**

SUNDAY NORTHBOUND DIRECTION

TIME OF DAY	FLOWS AND CAPACITY IN VEH/HR							AVERAGE SPEEDS IN MPH		
	MAIN ROUTE		SITE CAPA CITY	FLOW		AV.DEL PER VEH (MINS)	AVERAGE QUEUE (VEH)	MAIN ROUTE		SITE
	DEMAND FLOW	PCT HEAVY		MAIN ROUTE	'DIVER TED'			WITHOUT WORK ZONE	WITH WORK ZONE	
MID-1 AM	47	0.0	1500	47	0	0.50	0	63.8	50.9	41.9
1-2 AM	28	0.0	1500	28	0	0.50	0	63.8	50.9	41.9
2-3 AM	23	0.0	1500	23	0	0.50	0	63.8	50.9	41.9
3-4 AM	13	0.0	1500	13	0	0.50	0	63.9	51.0	42.0
4-5 AM	22	0.0	1500	22	0	0.50	0	63.8	50.9	41.9
5-6 AM	41	0.0	1500	41	0	0.50	0	63.8	50.9	41.9
6-7 AM	70	0.0	1500	70	0	0.51	0	63.8	50.8	41.7
7-8 AM	112	0.0	1500	112	0	0.51	0	63.7	50.7	41.6
8-9 AM	168	0.0	1500	168	0	0.51	0	63.6	50.5	41.4
9-10 AM	279	0.0	1500	279	0	0.53	0	63.4	50.1	41.0
10-11 AM	364	0.0	1500	364	0	0.53	0	63.2	49.9	40.7
11AM-NOON	397	0.0	1500	397	0	0.54	0	63.2	49.8	40.6
NOON-1PM	418	0.0	1500	418	0	0.54	0	63.1	49.7	40.6
1-2 PM	437	0.0	1500	437	0	0.54	0	63.1	49.7	40.5
2-3 PM	443	0.0	1500	443	0	0.54	0	63.1	49.6	40.5
3-4 PM	476	0.0	1500	476	0	0.54	0	63.0	49.6	40.4
4-5 PM	436	0.0	1500	436	0	0.54	0	63.1	49.7	40.5
5-6 PM	367	0.0	1500	367	0	0.53	0	63.2	49.9	40.7
6-7 PM	298	0.0	1500	298	0	0.53	0	63.3	50.1	41.0
7-8 PM	219	0.0	1500	219	0	0.52	0	63.5	50.3	41.2
8-9 PM	165	0.0	1500	165	0	0.51	0	63.6	50.5	41.4
9-10 PM	106	0.0	1500	106	0	0.51	0	63.7	50.7	41.6
10-11 PM	57	0.0	1500	57	0	0.50	0	63.8	50.8	41.8
11PM-MID	32	0.0	1500	32	0	0.50	0	63.8	50.9	41.9

*----- SITE BREAKDOWN DELAYS -----*	
BREAKDOWN DURATION (MINS)	0
RANGE OF QUEUE DELAY - MIN (VEH-H) MAX	0.0
AV BREAKDOWNS PER DAY	0.00
AV QUEUE DELAY/DAY (VEH-H)	0.0
AV TOTAL DELAY/DAY (VEH-H)	0.0

*----- SITE ACCIDENT DELAYS -----*	
BREAKDOWN DURATION (MINS)	0
RANGE OF QUEUE DELAY - MIN (VEH-H) MAX	0
AV BREAKDOWNS PER DAY	0
AV QUEUE DELAY/DAY (VEH-H)	0
AV TOTAL DELAY/DAY (VEH-H)	0

AVERAGE ACCIDENT NUMBERS (PIA/DAY)	
MAIN ROUTE WITHOUT WORKS	0.0017
MAIN ROUTE WITH WORKS	0.0023
'DIVERSION'	0.0000

PIA: Personal Injury Accidents

ECONOMIC IMPACT ON ROAD USERS	
ROAD USER COSTS PER DAY	\$694
CONGESTED HOURS PER DAY*	0

\*Delays Exceeding User-Specified Maximum

**STH 29: 40TH ST TO CTH T (CHIPPEWA COUNTY)  
CONTINUOUS (24 HOUR) CLOSURE  
NO DIVERSION ROUTE (MAX QUEUE METHOD)**

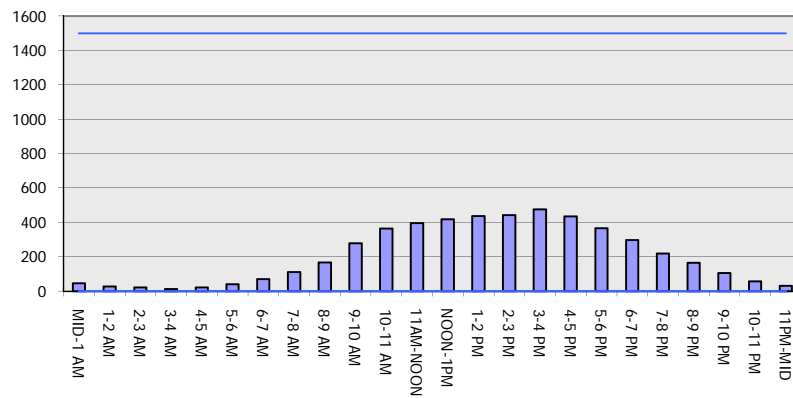
**OCTOBER**

Analyzed for 2009  
Construction Season

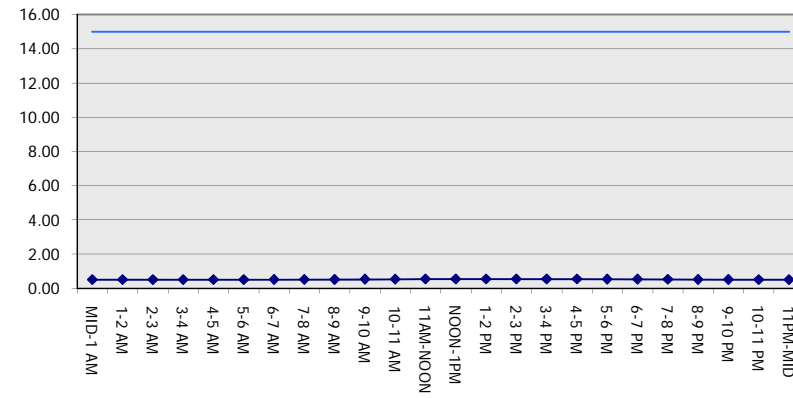
**GRAPHICAL REPRESENTATION OF TRAFFIC MODEL INPUT AND OUTPUT**

**SUNDAY NORTHBOUND DIRECTION**

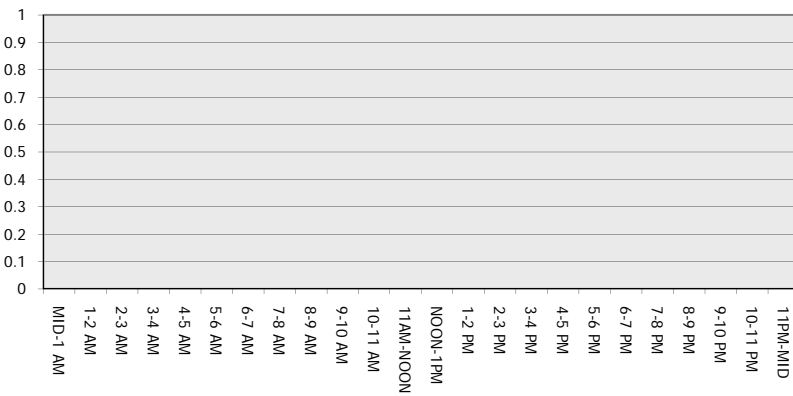
**Main Route - Traffic Demand (Vehicles Per Hour)**



**Main Route Average Delay Per Vehicle (Minutes)**



**Main Route - Average Queue Length (Vehicles)**



**Main Route - Average Speed (MPH)**

