

STH 29: 40TH ST TO CTH T (CHIPPEWA COUNTY) CONTINUOUS (24 HOUR) CLOSURE NO DIVERSION ROUTE (MAX QUEUE METHOD)	OCTOBER
	Analyzed for 2009 Construction Season

SUMMARY OF TRAFFIC MODEL OUTPUT

FRIDAY SOUTHBOUND DIRECTION

TIME OF DAY	FLOWS AND CAPACITY IN VEH/HR						AVERAGE SPEEDS IN MPH			
	MAIN ROUTE		SITE CAPA CITY	FLOW		AV.DEL PER VEH (MINS)	AVERAGE QUEUE (VEH)	MAIN ROUTE		SITE
	DEMAND FLOW	PCT HEAVY		MAIN ROUTE	'DIVER TED'			WITHOUT WORK ZONE	WITH WORK ZONE	
MID-1 AM	42	0.0	1500	42	0	0.50	0	63.8	50.9	41.9
1-2 AM	41	0.0	1500	41	0	0.50	0	63.8	50.9	41.9
2-3 AM	50	0.0	1500	50	0	0.50	0	63.8	50.9	41.8
3-4 AM	68	0.0	1500	68	0	0.51	0	63.8	50.8	41.7
4-5 AM	116	0.0	1500	116	0	0.51	0	63.7	50.6	41.6
5-6 AM	195	0.0	1500	195	0	0.52	0	63.5	50.4	41.3
6-7 AM	264	0.0	1500	264	0	0.52	0	63.4	50.2	41.1
7-8 AM	294	0.0	1500	294	0	0.53	0	63.3	50.1	41.0
8-9 AM	272	0.0	1500	272	0	0.52	0	63.4	50.2	41.0
9-10 AM	296	0.0	1500	296	0	0.53	0	63.3	50.1	41.0
10-11 AM	338	0.0	1500	338	0	0.53	0	63.3	49.9	40.9
11AM-NOON	369	0.0	1500	369	0	0.53	0	63.2	49.9	40.7
NOON-1PM	386	0.0	1500	386	0	0.54	0	63.2	49.8	40.7
1-2 PM	452	0.0	1500	452	0	0.54	0	63.0	49.6	40.4
2-3 PM	498	0.0	1500	498	0	0.55	0	63.0	49.5	40.3
3-4 PM	509	0.0	1500	509	0	0.55	0	63.0	49.4	40.2
4-5 PM	551	0.0	1500	551	0	0.55	0	62.8	49.3	40.1
5-6 PM	478	0.0	1500	478	0	0.54	0	63.0	49.6	40.4
6-7 PM	372	0.0	1500	372	0	0.53	0	63.2	49.9	40.7
7-8 PM	291	0.0	1500	291	0	0.53	0	63.3	50.1	41.0
8-9 PM	219	0.0	1500	219	0	0.52	0	63.5	50.3	41.2
9-10 PM	222	0.0	1500	222	0	0.52	0	63.5	50.3	41.2
10-11 PM	102	0.0	1500	102	0	0.51	0	63.7	50.7	41.7
11PM-MID	66	0.0	1500	66	0	0.50	0	63.8	50.8	41.8

----- SITE BREAKDOWN DELAYS -----	
BREAKDOWN DURATION (MINS)	0
RANGE OF QUEUE DELAY - MIN (VEH-H) MAX	0.0
AV BREAKDOWNS PER DAY	0.00
AV QUEUE DELAY/DAY (VEH-H)	0.0
AV TOTAL DELAY/DAY (VEH-H)	0.0

----- SITE ACCIDENT DELAYS -----	
BREAKDOWN DURATION (MINS)	0
RANGE OF QUEUE DELAY - MIN (VEH-H) MAX	0
AV BREAKDOWNS PER DAY	0
AV QUEUE DELAY/DAY (VEH-H)	0
AV TOTAL DELAY/DAY (VEH-H)	0

AVERAGE ACCIDENT NUMBERS (PIA/DAY)	
MAIN ROUTE WITHOUT WORKS	0.0022
MAIN ROUTE WITH WORKS	0.0029
'DIVERSION'	0.0000
<small>PIA: Personal Injury Accidents</small>	
IMPACTS ON ROAD USERS	
ROAD USER COSTS PER DAY	\$720
CONGESTED HOURS PER DAY*	0

*Delays Exceeding User-Specified Maximum

**STH 29: 40TH ST TO CTH T (CHIPPEWA COUNTY)
CONTINUOUS (24 HOUR) CLOSURE
NO DIVERSION ROUTE (MAX QUEUE METHOD)**

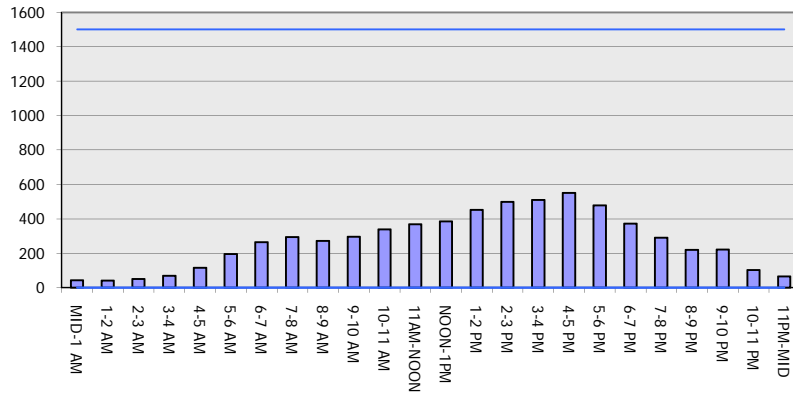
OCTOBER

Analyzed for 2009
Construction Season

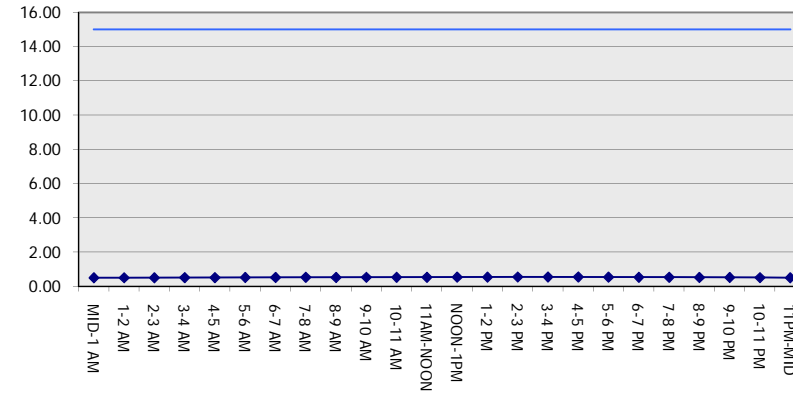
GRAPHICAL REPRESENTATION OF TRAFFIC MODEL INPUT AND OUTPUT

FRIDAY SOUTHBOUND DIRECTION

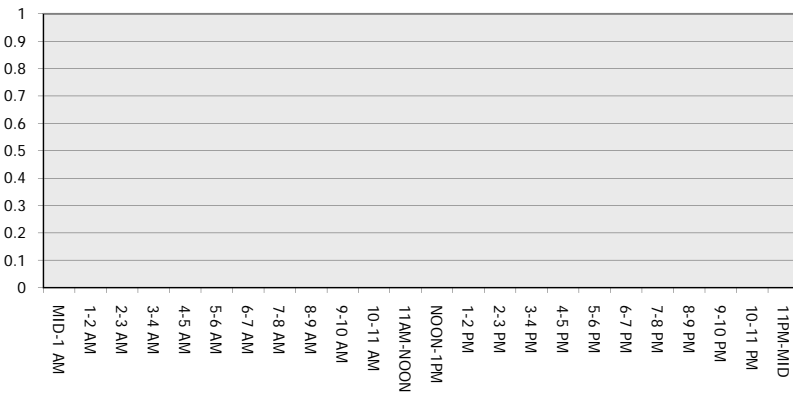
Main Route - Traffic Demand (Vehicles Per Hour)



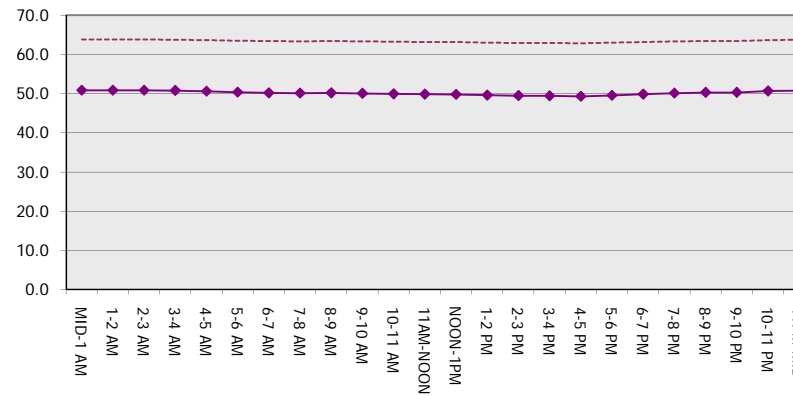
Main Route Average Delay Per Vehicle (Minutes)



Main Route - Average Queue Length (Vehicles)



Main Route - Average Speed (MPH)



STH 29: 40TH ST TO CTH T (CHIPPEWA COUNTY) CONTINUOUS (24 HOUR) CLOSURE NO DIVERSION ROUTE (MAX QUEUE METHOD)	OCTOBER
	Analyzed for 2009 Construction Season

SUMMARY OF TRAFFIC MODEL OUTPUT

FRIDAY NORTHBOUND DIRECTION

TIME OF DAY	FLOWS AND CAPACITY IN VEH/HR							AVERAGE SPEEDS IN MPH		
	MAIN ROUTE		SITE CAPA CITY	FLOW		AV.DEL PER VEH (MINS)	AVERAGE QUEUE (VEH)	MAIN ROUTE		SITE
	DEMAND FLOW	PCT HEAVY		MAIN ROUTE	'DIVER TED'			WITHOUT WORK ZONE	WITH WORK ZONE	
MID-1 AM	61	0.0	1500	61	0	0.50	0	63.8	50.8	41.8
1-2 AM	46	0.0	1500	46	0	0.50	0	63.8	50.9	41.9
2-3 AM	42	0.0	1500	42	0	0.50	0	63.8	50.9	41.9
3-4 AM	44	0.0	1500	44	0	0.50	0	63.8	50.9	41.9
4-5 AM	60	0.0	1500	60	0	0.50	0	63.8	50.8	41.8
5-6 AM	144	0.0	1500	144	0	0.51	0	63.7	50.5	41.5
6-7 AM	282	0.0	1500	282	0	0.53	0	63.4	50.1	41.0
7-8 AM	372	0.0	1500	372	0	0.53	0	63.2	49.9	40.7
8-9 AM	295	0.0	1500	295	0	0.53	0	63.3	50.1	41.0
9-10 AM	354	0.0	1500	354	0	0.53	0	63.2	49.9	40.8
10-11 AM	422	0.0	1500	422	0	0.54	0	63.1	49.7	40.6
11AM-NOON	454	0.0	1500	454	0	0.54	0	63.0	49.6	40.4
NOON-1PM	501	0.0	1500	501	0	0.55	0	63.0	49.4	40.3
1-2 PM	575	0.0	1500	575	0	0.55	0	62.8	49.2	40.1
2-3 PM	683	0.0	1500	683	0	0.56	0	62.7	48.9	39.7
3-4 PM	742	0.0	1500	742	0	0.57	0	62.5	48.7	39.5
4-5 PM	681	0.0	1500	681	0	0.56	0	62.7	48.9	39.7
5-6 PM	639	0.0	1500	639	0	0.56	0	62.7	49.1	39.9
6-7 PM	434	0.0	1500	434	0	0.54	0	63.1	49.7	40.5
7-8 PM	304	0.0	1500	304	0	0.53	0	63.3	50.1	40.9
8-9 PM	220	0.0	1500	220	0	0.52	0	63.5	50.3	41.2
9-10 PM	154	0.0	1500	154	0	0.51	0	63.6	50.5	41.5
10-11 PM	112	0.0	1500	112	0	0.51	0	63.7	50.7	41.6
11PM-MID	94	0.0	1500	94	0	0.51	0	63.7	50.7	41.7

----- SITE BREAKDOWN DELAYS -----	
BREAKDOWN DURATION (MINS)	0
RANGE OF QUEUE DELAY - MIN (VEH-H) MAX	0.0
AV BREAKDOWNS PER DAY	0.00
AV QUEUE DELAY/DAY (VEH-H)	0.0
AV TOTAL DELAY/DAY (VEH-H)	0.0

----- SITE ACCIDENT DELAYS -----	
BREAKDOWN DURATION (MINS)	0
RANGE OF QUEUE DELAY - MIN (VEH-H) MAX	0
AV BREAKDOWNS PER DAY	0
AV QUEUE DELAY/DAY (VEH-H)	0
AV TOTAL DELAY/DAY (VEH-H)	0

AVERAGE ACCIDENT NUMBERS (PIA/DAY)	
MAIN ROUTE WITHOUT WORKS	0.0027
MAIN ROUTE WITH WORKS	0.0035
'DIVERSION'	0.0000

PIA: Personal Injury Accidents

ECONOMIC IMPACT ON ROAD USERS	
ROAD USER COSTS PER DAY	\$873
CONGESTED HOURS PER DAY*	0

*Delays Exceeding User-Specified Maximum

**STH 29: 40TH ST TO CTH T (CHIPPEWA COUNTY)
CONTINUOUS (24 HOUR) CLOSURE
NO DIVERSION ROUTE (MAX QUEUE METHOD)**

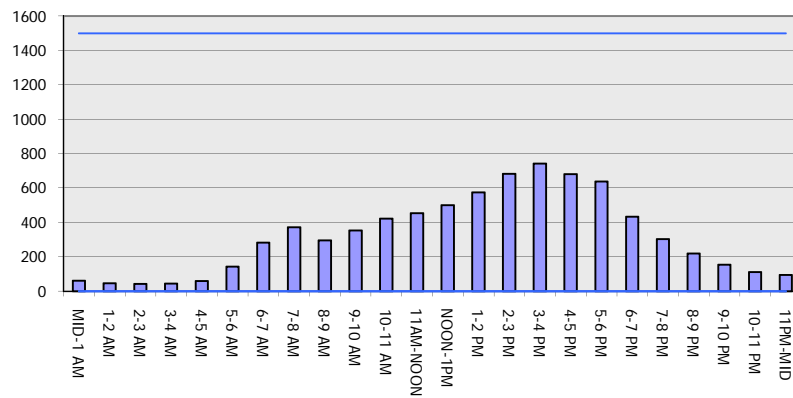
OCTOBER

Analyzed for 2009
Construction Season

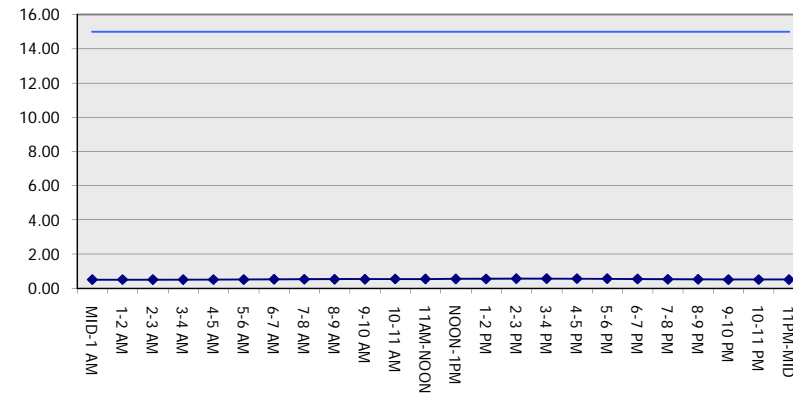
GRAPHICAL REPRESENTATION OF TRAFFIC MODEL INPUT AND OUTPUT

FRIDAY NORTHBOUND DIRECTION

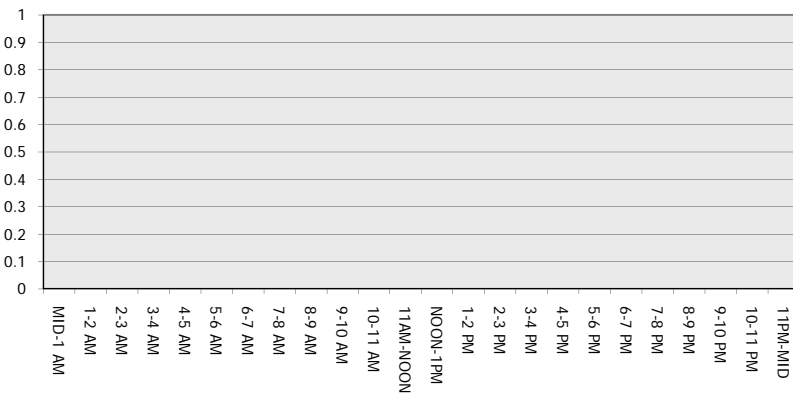
Main Route - Traffic Demand (Vehicles Per Hour)



Main Route Average Delay Per Vehicle (Minutes)



Main Route - Average Queue Length (Vehicles)



Main Route - Average Speed (MPH)

