

USH 53: USH 8 TO CTH I (BARRON COUNTY) CONTINUOUS (24 HOUR) CLOSURE DIVERSION ROUTE: CTH I - CTH SS - USH 8	AUGUST
	Analyzed for 2009 Construction Season

SUMMARY OF TRAFFIC MODEL OUTPUT

SUNDAY SOUTHBOUND DIRECTION

TIME OF DAY	FLOWS AND CAPACITY IN VEH/HR								AVERAGE SPEEDS IN MPH						
	MAIN ROUTE		ALTERNATE ROUTE		SITE CAPA CITY	FLOW MAIN ROUTE	FLOW DIVER -TING	TOTAL DIVN FLOW	AV.DEL PER VEH (MINS)	AVERAGE QUEUE (VEH)	MAIN ROUTE		ALTERNATE ROUTE		
	DEMAND FLOW	PCT HEAVY	NORMAL FLOW	PCT HEAVY							WITHOUT WORK ZN	WITH WORK ZN	SITE	WITHOUT WORK ZN	WITH WORK ZN
MID-1 AM	74	0.0	134	0.0	1500	74	0	134	0.43	0	66.3	62.7	45.2	38.6	38.6
1-2 AM	49	0.0	90	0.0	1500	49	0	90	0.43	0	66.3	62.7	45.3	38.8	38.8
2-3 AM	45	0.0	81	0.0	1500	45	0	81	0.43	0	66.3	62.7	45.3	38.8	38.8
3-4 AM	29	0.0	54	0.0	1500	29	0	54	0.43	0	66.3	62.8	45.4	38.9	38.9
4-5 AM	25	0.0	46	0.0	1500	25	0	46	0.42	0	66.3	62.8	45.4	38.9	38.9
5-6 AM	46	0.0	83	0.0	1500	46	0	83	0.43	0	66.3	62.7	45.3	38.8	38.8
6-7 AM	73	0.0	133	0.0	1500	73	0	133	0.43	0	66.3	62.7	45.2	38.6	38.6
7-8 AM	130	0.0	237	0.0	1500	130	0	237	0.44	0	66.1	62.5	45.0	38.1	38.1
8-9 AM	233	0.0	424	0.0	1500	233	0	424	0.45	0	66.0	62.3	44.5	37.3	37.3
9-10 AM	377	0.0	688	0.0	1500	377	0	688	0.46	0	65.7	61.9	44.0	32.6	32.6
10-11 AM	547	0.0	996	0.0	1500	547	0	996+	0.48	0	65.4	61.5	43.3	22.2	22.2
11A-NOON	668	0.0	1218	0.0	1500	668	0	1218+	0.49	0	65.1	61.2	42.8	19.3	19.3
NOON-1PM	686	0.0	1250	0.0	1500	686	0	1250+	0.49	0	65.1	61.2	42.8	19.3	19.3
1-2 PM	707	0.0	1288	0.0	1500	707	0	1288+	0.49	0	65.1	61.2	42.7	19.3	19.3
2-3 PM	693	0.0	1263	0.0	1500	693	0	1263+	0.49	0	65.1	61.2	42.8	19.3	19.3
3-4 PM	672	0.0	1226	0.0	1500	672	0	1226+	0.49	0	65.1	61.2	42.8	19.3	19.3
4-5 PM	611	0.0	1114	0.0	1500	611	0	1114+	0.48	0	65.3	61.4	43.1	19.3	19.3
5-6 PM	519	0.0	947	0.0	1500	519	0	947+	0.47	0	65.4	61.6	43.4	24.3	24.3
6-7 PM	436	0.0	795	0.0	1500	436	0	795	0.46	0	65.6	61.8	43.8	30.6	30.6
7-8 PM	330	0.0	600	0.0	1500	330	0	600	0.45	0	65.8	62.0	44.2	34.3	34.3
8-9 PM	242	0.0	442	0.0	1500	242	0	442	0.45	0	66.0	62.3	44.5	37.3	37.3
9-10 PM	167	0.0	306	0.0	1500	167	0	306	0.44	0	66.1	62.4	44.8	37.8	37.8
10-11 PM	101	0.0	185	0.0	1500	101	0	185	0.43	0	66.2	62.6	45.1	38.4	38.4
11PM-MID	57	0.0	104	0.0	1500	57	0	104	0.43	0	66.3	62.7	45.3	38.7	38.7

+ INDICATES DIVERSION FLOW EXCEEDS USER-SPECIFIED WARNING LIMIT

----- SITE BREAKDOWN DELAYS -----	
BREAKDOWN DURATION (MINS)	0
RANGE OF QUEUE DELAY - MIN (VEH-H) MAX	0.0
RANGE OF DIVN DELAY - MIN (VEH-H) MAX	0.0
AV BREAKDOWNS PER DAY	0.00
AV QUEUE DELAY/DAY (VEH-H)	0.0
AV DIVN DELAY/DAY (VEH-H)	0.0
AV TOTAL DELAY/DAY (VEH-H)	0.0

----- SITE ACCIDENT DELAYS -----	
ACCIDENT DURATION (MINS)	0
RANGE OF QUEUE DELAY - MIN (VEH-H) MAX	0.0
RANGE OF DIVN DELAY - MIN (VEH-H) MAX	0.0
AV ACCIDENTS PER DAY	0.00
AV QUEUE DELAY/DAY (VEH-H)	0.0
AV DIVN DELAY/DAY (VEH-H)	0.0
AV TOTAL DELAY/DAY (VEH-H)	0.0

AVERAGE ACCIDENT NUMBERS (PIA/DAY)	
MAIN ROUTE WITHOUT WORKS	0.0099
MAIN ROUTE WITH WORKS	0.0094
DIVERSION	0.1914

PIA: Personal Injury Accidents

IMPACTS ON ROAD USERS	
ROAD USER COSTS PER DAY (DOLLARS)	\$912
CONGESTED HOURS PER DAY*	0

*Delays Exceeding 15 Minutes

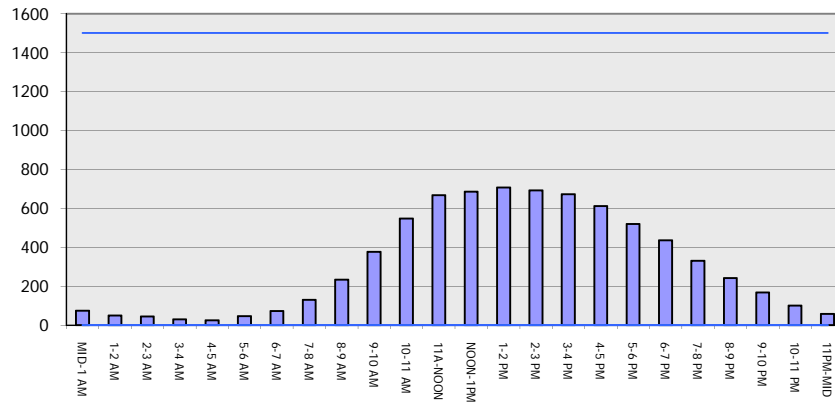
USH 53: USH 8 TO CTH I (BARRON COUNTY)
CONTINUOUS (24 HOUR) CLOSURE
DIVERSION ROUTE: CTH I - CTH SS - USH 8

AUGUST
 Analyzed for 2009
 Construction Season

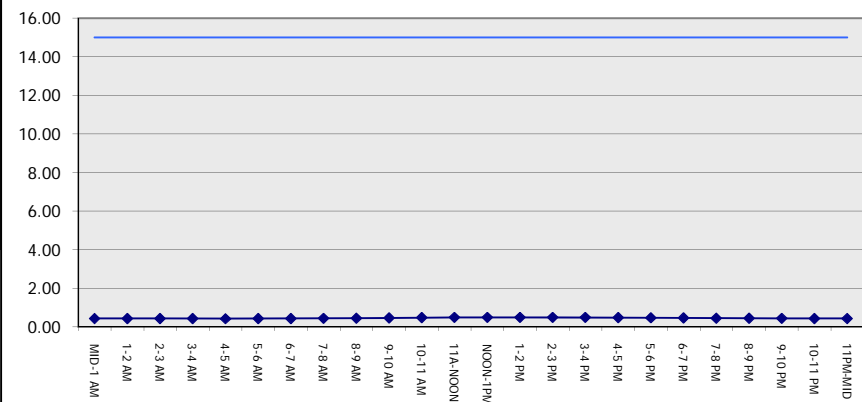
GRAPHICAL REPRESENTATION OF TRAFFIC MODEL INPUT AND OUTPUT

SUNDAY SOUTHBOUND DIRECTION

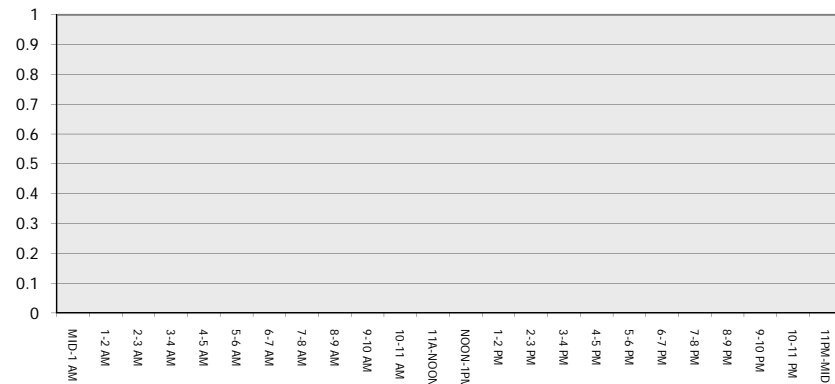
Main Route - Traffic Demand (Vehicles Per Hour)



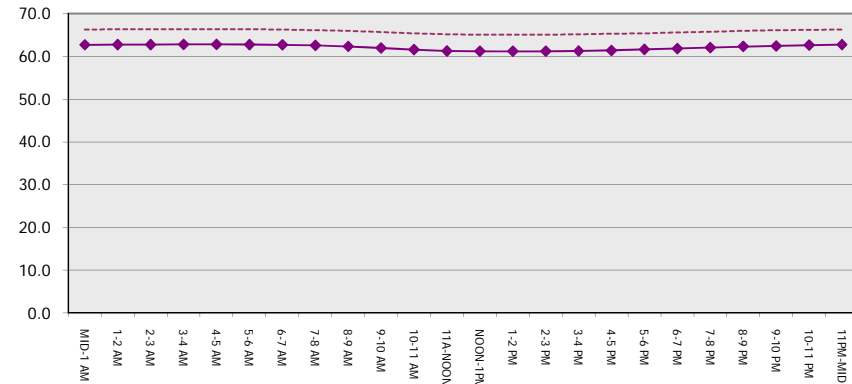
Main Route Average Delay Per Vehicle (Minutes)



Main Route - Average Queue Length (Vehicles)



Main Route - Average Speed (MPH)



USH 53: USH 8 TO CTH I (BARRON COUNTY) CONTINUOUS (24 HOUR) CLOSURE DIVERSION ROUTE: CTH I - CTH SS - USH 8	AUGUST
	Analyzed for 2009 Construction Season

SUMMARY OF TRAFFIC MODEL OUTPUT

SUNDAY NORTHBOUND DIRECTION

TIME OF DAY	FLOWS AND CAPACITY IN VEH/HR								AVERAGE SPEEDS IN MPH						
	MAIN		DIVERSION		SITE CAPA CITY	FLOW MAIN ROUTE	FLOW DIVER -TING	TOTAL DIVN FLOW	AV.DEL PER VEH (MINS)	AVERAGE QUEUE (VEH)	MAIN ROUTE		SITE	ALTERNATE ROUTE	
	DEMAND FLOW	PCT HEAVY	NORMAL FLOW	PCT HEAVY							WITHOUT WORK ZN	WITH WORK ZN		WITHOUT WORK ZN	WITH WORK ZN
MID-1 AM	43	0.0	78	0.0	1500	43	0	78	0.43	0	66.3	62.7	45.3	38.8	38.8
1-2 AM	28	0.0	53	0.0	1500	28	0	53	0.43	0	66.3	62.8	45.4	38.9	38.9
2-3 AM	21	0.0	38	0.0	1500	21	0	38	0.42	0	66.3	62.8	45.4	38.9	38.9
3-4 AM	21	0.0	38	0.0	1500	21	0	38	0.42	0	66.3	62.8	45.4	38.9	38.9
4-5 AM	21	0.0	38	0.0	1500	21	0	38	0.42	0	66.3	62.8	45.4	38.9	38.9
5-6 AM	26	0.0	48	0.0	1500	26	0	48	0.42	0	66.3	62.8	45.4	38.9	38.9
6-7 AM	41	0.0	73	0.0	1500	41	0	73	0.43	0	66.3	62.7	45.3	38.8	38.8
7-8 AM	74	0.0	135	0.0	1500	74	0	135	0.43	0	66.3	62.7	45.2	38.6	38.6
8-9 AM	132	0.0	241	0.0	1500	132	0	241	0.44	0	66.1	62.5	45.0	38.1	38.1
9-10 AM	220	0.0	401	0.0	1500	220	0	401	0.44	0	66.0	62.3	44.6	37.4	37.4
10-11 AM	305	0.0	557	0.0	1500	305	0	557	0.45	0	65.8	62.1	44.3	35.1	35.1
11A-NOON	376	0.0	687	0.0	1500	376	0	687	0.46	0	65.7	61.9	44.0	32.6	32.6
NOON-1PM	395	0.0	720	0.0	1500	395	0	720	0.46	0	65.6	61.9	43.9	32.0	32.0
1-2 PM	424	0.0	774	0.0	1500	424	0	774	0.46	0	65.6	61.8	43.8	30.9	30.9
2-3 PM	445	0.0	812	0.0	1500	445	0	812+	0.47	0	65.6	61.8	43.7	29.9	29.9
3-4 PM	438	0.0	798	0.0	1500	438	0	798	0.46	0	65.6	61.8	43.7	30.5	30.5
4-5 PM	407	0.0	741	0.0	1500	407	0	741	0.46	0	65.6	61.9	43.8	31.5	31.5
5-6 PM	346	0.0	631	0.0	1500	346	0	631	0.46	0	65.8	62.0	44.1	33.7	33.7
6-7 PM	318	0.0	580	0.0	1500	318	0	580	0.45	0	65.8	62.1	44.2	34.7	34.7
7-8 PM	235	0.0	429	0.0	1500	235	0	429	0.45	0	66.0	62.3	44.5	37.3	37.3
8-9 PM	211	0.0	385	0.0	1500	211	0	385	0.44	0	66.0	62.3	44.6	37.5	37.5
9-10 PM	166	0.0	304	0.0	1500	166	0	304	0.44	0	66.1	62.4	44.8	37.9	37.9
10-11 PM	110	0.0	200	0.0	1500	110	0	200	0.43	0	66.2	62.6	45.0	38.3	38.3
11PM-MID	61	0.0	111	0.0	1500	61	0	111	0.43	0	66.3	62.7	45.3	38.7	38.7

+ INDICATES DIVERSION FLOW EXCEEDS USER-SPECIFIED WARNING LIMIT

----- SITE BREAKDOWN DELAYS -----	
BREAKDOWN DURATION (MINS)	0
RANGE OF QUEUE DELAY - MIN	0.0
(VEH-H) MAX	0.0
RANGE OF DIVN DELAY - MIN	0.0
(VEH-H) MAX	0.0
AV BREAKDOWNS PER DAY	0.00
AV QUEUE DELAY/DAY (VEH-H)	0.0
AV DIVN DELAY/DAY (VEH-H)	0.0
AV TOTAL DELAY/DAY (VEH-H)	0.0

----- SITE ACCIDENT DELAYS -----	
ACCIDENT DURATION (MINS)	0
RANGE OF QUEUE DELAY - MIN	0.0
(VEH-H) MAX	0.0
RANGE OF DIVN DELAY - MIN	0.0
(VEH-H) MAX	0.0
AV ACCIDENTS PER DAY	0.00
AV QUEUE DELAY/DAY (VEH-H)	0.0
AV DIVN DELAY/DAY (VEH-H)	0.0
AV TOTAL DELAY/DAY (VEH-H)	0.0

AVERAGE ACCIDENT NUMBERS (PIA/DAY)	
MAIN ROUTE WITHOUT WORKS	0.0064
MAIN ROUTE WITH WORKS	0.0061
DIVERSION	0.1240

PIA: Personal Injury Accidents

IMPACTS ON ROAD USERS	
ROAD USER COSTS PER DAY (DOLLARS)	\$565
CONGESTED HOURS PER DAY*	0

*Delays Exceeding 15 Minutes

USH 53: USH 8 TO CTH I (BARRON COUNTY)
CONTINUOUS (24 HOUR) CLOSURE
DIVERSION ROUTE: CTH I - CTH SS - USH 8

AUGUST
 Analyzed for 2009
 Construction Season

GRAPHICAL REPRESENTATION OF TRAFFIC MODEL INPUT AND OUTPUT
SUNDAY NORTHBOUND DIRECTION

