

USH 53: USH 8 TO CTH I (BARRON COUNTY) CONTINUOUS (24 HOUR) CLOSURE DIVERSION ROUTE: CTH I - CTH SS - USH 8	MAY
	Analyzed for 2009 Construction Season

SUMMARY OF TRAFFIC MODEL OUTPUT

SUNDAY SOUTHBOUND DIRECTION

TIME OF DAY	FLOWS AND CAPACITY IN VEH/HR								AVERAGE SPEEDS IN MPH						
	MAIN ROUTE		ALTERNATE ROUTE		SITE CAPA CITY	FLOW MAIN ROUTE	FLOW DIVER -TING	TOTAL DIVN FLOW	AV.DEL PER VEH (MINS)	AVERAGE QUEUE (VEH)	MAIN ROUTE		ALTERNATE ROUTE		
	DEMAND FLOW	PCT HEAVY	NORMAL FLOW	PCT HEAVY							WITHOUT WORK ZN	WITH WORK ZN	SITE	WITHOUT WORK ZN	WITH WORK ZN
MID-1 AM	48	0.0	86	0.0	1500	48	0	86	0.43	0	66.3	62.7	45.3	38.8	38.8
1-2 AM	31	0.0	58	0.0	1500	31	0	58	0.43	0	66.3	62.8	45.4	38.9	38.9
2-3 AM	32	0.0	59	0.0	1500	32	0	59	0.43	0	66.3	62.8	45.4	38.9	38.9
3-4 AM	21	0.0	39	0.0	1500	21	0	39	0.42	0	66.3	62.8	45.4	38.9	38.9
4-5 AM	26	0.0	47	0.0	1500	26	0	47	0.42	0	66.3	62.8	45.4	38.9	38.9
5-6 AM	36	0.0	65	0.0	1500	36	0	65	0.43	0	66.3	62.8	45.3	38.9	38.9
6-7 AM	57	0.0	104	0.0	1500	57	0	104	0.43	0	66.3	62.7	45.3	38.7	38.7
7-8 AM	87	0.0	160	0.0	1500	87	0	160	0.43	0	66.2	62.7	45.1	38.4	38.4
8-9 AM	170	0.0	310	0.0	1500	170	0	310	0.44	0	66.1	62.4	44.8	37.8	37.8
9-10 AM	264	0.0	481	0.0	1500	264	0	481	0.45	0	65.9	62.2	44.4	36.6	36.6
10-11 AM	364	0.0	664	0.0	1500	364	0	664	0.46	0	65.7	62.0	44.0	33.0	33.0
11A-NOON	430	0.0	783	0.0	1500	430	0	783	0.46	0	65.6	61.8	43.8	30.7	30.7
NOON-1PM	452	0.0	825	0.0	1500	452	0	825+	0.47	0	65.5	61.7	43.7	29.4	29.4
1-2 PM	440	0.0	802	0.0	1500	440	0	802+	0.47	0	65.6	61.8	43.7	30.4	30.4
2-3 PM	469	0.0	853	0.0	1500	469	0	853+	0.47	0	65.5	61.7	43.7	28.3	28.3
3-4 PM	460	0.0	838	0.0	1500	460	0	838+	0.47	0	65.5	61.7	43.7	28.9	28.9
4-5 PM	447	0.0	816	0.0	1500	447	0	816+	0.47	0	65.6	61.8	43.7	29.8	29.8
5-6 PM	390	0.0	709	0.0	1500	390	0	709	0.46	0	65.6	61.9	43.9	32.2	32.2
6-7 PM	311	0.0	568	0.0	1500	311	0	568	0.45	0	65.8	62.1	44.2	34.9	34.9
7-8 PM	234	0.0	426	0.0	1500	234	0	426	0.45	0	66.0	62.3	44.5	37.3	37.3
8-9 PM	173	0.0	315	0.0	1500	173	0	315	0.44	0	66.1	62.4	44.8	37.8	37.8
9-10 PM	130	0.0	237	0.0	1500	130	0	237	0.44	0	66.1	62.5	45.0	38.1	38.1
10-11 PM	77	0.0	141	0.0	1500	77	0	141	0.43	0	66.3	62.7	45.2	38.5	38.5
11PM-MID	53	0.0	96	0.0	1500	53	0	96	0.43	0	66.3	62.7	45.3	38.8	38.8

+ INDICATES DIVERSION FLOW EXCEEDS USER-SPECIFIED WARNING LIMIT

----- SITE BREAKDOWN DELAYS -----	
BREAKDOWN DURATION (MINS)	0
RANGE OF QUEUE DELAY - MIN (VEH-H) MAX	0.0
RANGE OF DIVN DELAY - MIN (VEH-H) MAX	0.0
AV BREAKDOWNS PER DAY	0.00
AV QUEUE DELAY/DAY (VEH-H)	0.0
AV DIVN DELAY/DAY (VEH-H)	0.0
AV TOTAL DELAY/DAY (VEH-H)	0.0

----- SITE ACCIDENT DELAYS -----	
ACCIDENT DURATION (MINS)	0
RANGE OF QUEUE DELAY - MIN (VEH-H) MAX	0.0
RANGE OF DIVN DELAY - MIN (VEH-H) MAX	0.0
AV ACCIDENTS PER DAY	0.00
AV QUEUE DELAY/DAY (VEH-H)	0.0
AV DIVN DELAY/DAY (VEH-H)	0.0
AV TOTAL DELAY/DAY (VEH-H)	0.0

AVERAGE ACCIDENT NUMBERS (PIA/DAY)	
MAIN ROUTE WITHOUT WORKS	0.0069
MAIN ROUTE WITH WORKS	0.0065
DIVERSION	0.1325

PIA: Personal Injury Accidents

IMPACTS ON ROAD USERS	
ROAD USER COSTS PER DAY (DOLLARS)	\$607
CONGESTED HOURS PER DAY*	0

*Delays Exceeding 15 Minutes

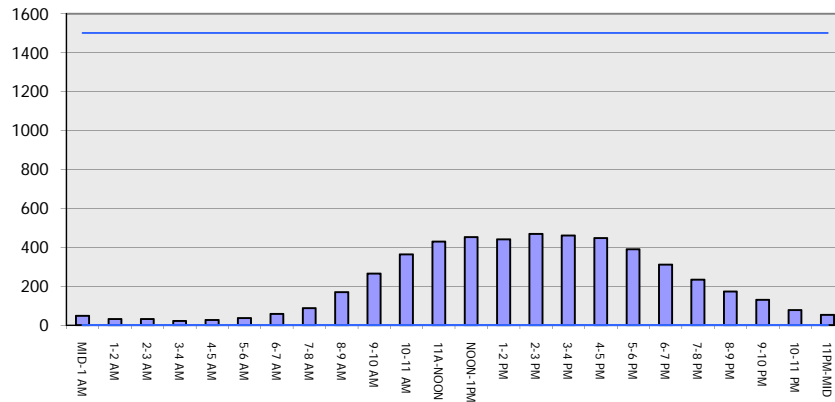
USH 53: USH 8 TO CTH I (BARRON COUNTY)
CONTINUOUS (24 HOUR) CLOSURE
DIVERSION ROUTE: CTH I - CTH SS - USH 8

MAY
 Analyzed for 2009
 Construction Season

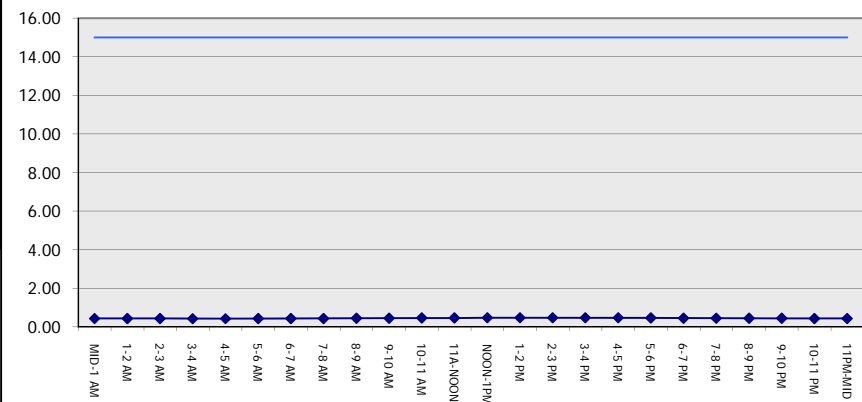
GRAPHICAL REPRESENTATION OF TRAFFIC MODEL INPUT AND OUTPUT

SUNDAY SOUTHBOUND DIRECTION

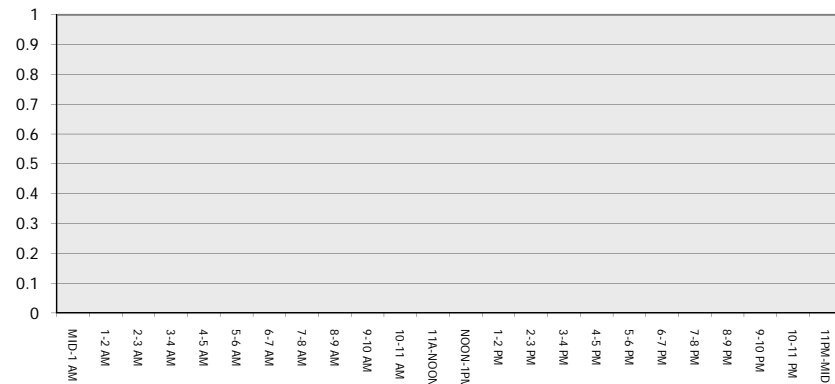
Main Route - Traffic Demand (Vehicles Per Hour)



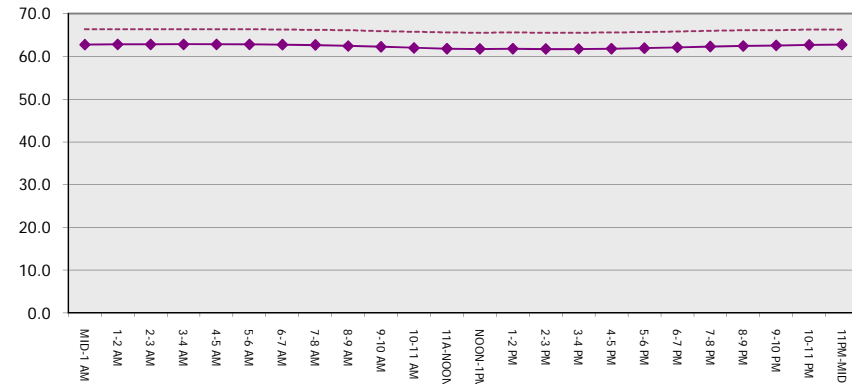
Main Route Average Delay Per Vehicle (Minutes)



Main Route - Average Queue Length (Vehicles)



Main Route - Average Speed (MPH)



USH 53: USH 8 TO CTH I (BARRON COUNTY) CONTINUOUS (24 HOUR) CLOSURE DIVERSION ROUTE: CTH I - CTH SS - USH 8	MAY
	Analyzed for 2009 Construction Season

SUMMARY OF TRAFFIC MODEL OUTPUT

SUNDAY NORTHBOUND DIRECTION

TIME OF DAY	FLOWS AND CAPACITY IN VEH/HR								AVERAGE SPEEDS IN MPH						
	MAIN		DIVERSION		SITE CAPA CITY	FLOW MAIN ROUTE	FLOW DIVER -TING	TOTAL DIVN FLOW	AV.DEL PER VEH (MINS)	AVERAGE QUEUE (VEH)	MAIN ROUTE		SITE	ALTERNATE ROUTE	
	DEMAND FLOW	PCT HEAVY	NORMAL FLOW	PCT HEAVY							WITHOUT WORK ZN	WITH WORK ZN		WITHOUT WORK ZN	WITH WORK ZN
MID-1 AM	44	0.0	79	0.0	1500	44	0	79	0.43	0	66.3	62.7	45.3	38.8	38.8
1-2 AM	24	0.0	44	0.0	1500	24	0	44	0.42	0	66.3	62.8	45.4	38.9	38.9
2-3 AM	19	0.0	36	0.0	1500	19	0	36	0.42	0	66.3	62.8	45.4	39.0	39.0
3-4 AM	13	0.0	24	0.0	1500	13	0	24	0.42	0	66.4	62.8	45.5	39.0	39.0
4-5 AM	16	0.0	29	0.0	1500	16	0	29	0.42	0	66.4	62.8	45.5	39.0	39.0
5-6 AM	26	0.0	47	0.0	1500	26	0	47	0.42	0	66.3	62.8	45.4	38.9	38.9
6-7 AM	39	0.0	70	0.0	1500	39	0	70	0.43	0	66.3	62.7	45.3	38.8	38.8
7-8 AM	67	0.0	121	0.0	1500	67	0	121	0.43	0	66.3	62.7	45.2	38.6	38.6
8-9 AM	121	0.0	220	0.0	1500	121	0	220	0.43	0	66.1	62.5	45.0	38.2	38.2
9-10 AM	186	0.0	339	0.0	1500	186	0	339	0.44	0	66.0	62.4	44.7	37.7	37.7
10-11 AM	255	0.0	463	0.0	1500	255	0	463	0.45	0	65.9	62.2	44.5	36.9	36.9
11A-NOON	303	0.0	552	0.0	1500	303	0	552	0.45	0	65.8	62.1	44.3	35.2	35.2
NOON-1PM	315	0.0	573	0.0	1500	315	0	573	0.45	0	65.8	62.1	44.2	34.8	34.8
1-2 PM	341	0.0	621	0.0	1500	341	0	621	0.46	0	65.8	62.0	44.2	33.9	33.9
2-3 PM	323	0.0	588	0.0	1500	323	0	588	0.45	0	65.8	62.0	44.2	34.5	34.5
3-4 PM	336	0.0	612	0.0	1500	336	0	612	0.46	0	65.8	62.0	44.2	34.1	34.1
4-5 PM	342	0.0	622	0.0	1500	342	0	622	0.46	0	65.8	62.0	44.1	33.8	33.8
5-6 PM	319	0.0	581	0.0	1500	319	0	581	0.45	0	65.8	62.1	44.2	34.7	34.7
6-7 PM	262	0.0	477	0.0	1500	262	0	477	0.45	0	65.9	62.2	44.5	36.6	36.6
7-8 PM	199	0.0	362	0.0	1500	199	0	362	0.44	0	66.0	62.3	44.7	37.6	37.6
8-9 PM	170	0.0	311	0.0	1500	170	0	311	0.44	0	66.1	62.4	44.8	37.8	37.8
9-10 PM	123	0.0	223	0.0	1500	123	0	223	0.43	0	66.1	62.5	45.0	38.2	38.2
10-11 PM	100	0.0	183	0.0	1500	100	0	183	0.43	0	66.2	62.6	45.1	38.4	38.4
11PM-MID	50	0.0	90	0.0	1500	50	0	90	0.43	0	66.3	62.7	45.3	38.8	38.8

----- SITE BREAKDOWN DELAYS -----	
BREAKDOWN DURATION (MINS)	0
RANGE OF QUEUE DELAY - MIN (VEH-H) MAX	0.0
RANGE OF DIVN DELAY - MIN (VEH-H) MAX	0.0
AV BREAKDOWNS PER DAY	0.00
AV QUEUE DELAY/DAY (VEH-H)	0.0
AV DIVN DELAY/DAY (VEH-H)	0.0
AV TOTAL DELAY/DAY (VEH-H)	0.0

----- SITE ACCIDENT DELAYS -----	
ACCIDENT DURATION (MINS)	0
RANGE OF QUEUE DELAY - MIN (VEH-H) MAX	0.0
RANGE OF DIVN DELAY - MIN (VEH-H) MAX	0.0
AV ACCIDENTS PER DAY	0.00
AV QUEUE DELAY/DAY (VEH-H)	0.0
AV DIVN DELAY/DAY (VEH-H)	0.0
AV TOTAL DELAY/DAY (VEH-H)	0.0

AVERAGE ACCIDENT NUMBERS (PIA/DAY)	
MAIN ROUTE WITHOUT WORKS	0.0053
MAIN ROUTE WITH WORKS	0.0050
DIVERSION	0.1015

PIA: Personal Injury Accidents

IMPACTS ON ROAD USERS	
ROAD USER COSTS PER DAY (DOLLARS)	\$455
CONGESTED HOURS PER DAY*	0

*Delays Exceeding 15 Minutes

**USH 53: USH 8 TO CTH I (BARRON COUNTY)
CONTINUOUS (24 HOUR) CLOSURE
DIVERSION ROUTE: CTH I - CTH SS - USH 8**

MAY
Analyzed for 2009
Construction Season

GRAPHICAL REPRESENTATION OF TRAFFIC MODEL INPUT AND OUTPUT

SUNDAY NORTHBOUND DIRECTION

