

USH 53: USH 8 TO CTH I (BARRON COUNTY) CONTINUOUS (24 HOUR) CLOSURE DIVERSION ROUTE: CTH I - CTH SS - USH 8	MAY
	Analyzed for 2009 Construction Season

SUMMARY OF TRAFFIC MODEL OUTPUT

SATURDAY SOUTHBOUND DIRECTION

TIME OF DAY	FLOWS AND CAPACITY IN VEH/HR								AVERAGE SPEEDS IN MPH						
	MAIN ROUTE		ALTERNATE ROUTE		SITE CAPA CITY	FLOW MAIN ROUTE	FLOW DIVER -TING	TOTAL DIVN FLOW	AV.DEL PER VEH (MINS)	AVERAGE QUEUE (VEH)	MAIN ROUTE		ALTERNATE ROUTE		
	DEMAND FLOW	PCT HEAVY	NORMAL FLOW	PCT HEAVY							WITHOUT WORK ZN	WITH WORK ZN	SITE	WITHOUT WORK ZN	WITH WORK ZN
MID-1 AM	53	0.0	96	0.0	1500	53	0	96	0.43	0	66.3	62.7	45.3	38.8	38.8
1-2 AM	36	0.0	66	0.0	1500	36	0	66	0.43	0	66.3	62.8	45.3	38.9	38.9
2-3 AM	34	0.0	62	0.0	1500	34	0	62	0.43	0	66.3	62.8	45.3	38.9	38.9
3-4 AM	28	0.0	51	0.0	1500	28	0	51	0.43	0	66.3	62.8	45.4	38.9	38.9
4-5 AM	34	0.0	62	0.0	1500	34	0	62	0.43	0	66.3	62.8	45.3	38.9	38.9
5-6 AM	54	0.0	98	0.0	1500	54	0	98	0.43	0	66.3	62.7	45.3	38.7	38.7
6-7 AM	96	0.0	175	0.0	1500	96	0	175	0.43	0	66.2	62.6	45.1	38.4	38.4
7-8 AM	179	0.0	325	0.0	1500	179	0	325	0.44	0	66.1	62.4	44.8	37.8	37.8
8-9 AM	253	0.0	460	0.0	1500	253	0	460	0.45	0	65.9	62.2	44.5	36.9	36.9
9-10 AM	340	0.0	620	0.0	1500	340	0	620	0.46	0	65.8	62.0	44.2	33.9	33.9
10-11 AM	350	0.0	637	0.0	1500	350	0	637	0.46	0	65.7	62.0	44.1	33.6	33.6
11A-NOON	332	0.0	605	0.0	1500	332	0	605	0.45	0	65.8	62.0	44.2	34.2	34.2
NOON-1PM	331	0.0	603	0.0	1500	331	0	603	0.45	0	65.8	62.0	44.2	34.2	34.2
1-2 PM	328	0.0	597	0.0	1500	328	0	597	0.45	0	65.8	62.0	44.2	34.3	34.3
2-3 PM	303	0.0	554	0.0	1500	303	0	554	0.45	0	65.8	62.1	44.3	35.1	35.1
3-4 PM	300	0.0	548	0.0	1500	300	0	548	0.45	0	65.8	62.1	44.3	35.3	35.3
4-5 PM	283	0.0	517	0.0	1500	283	0	517	0.45	0	65.9	62.2	44.3	35.9	35.9
5-6 PM	242	0.0	442	0.0	1500	242	0	442	0.45	0	66.0	62.3	44.5	37.3	37.3
6-7 PM	220	0.0	403	0.0	1500	220	0	403	0.44	0	66.0	62.3	44.6	37.4	37.4
7-8 PM	196	0.0	356	0.0	1500	196	0	356	0.44	0	66.0	62.3	44.7	37.6	37.6
8-9 PM	171	0.0	313	0.0	1500	171	0	313	0.44	0	66.1	62.4	44.8	37.8	37.8
9-10 PM	130	0.0	237	0.0	1500	130	0	237	0.44	0	66.1	62.5	45.0	38.1	38.1
10-11 PM	113	0.0	205	0.0	1500	113	0	205	0.43	0	66.2	62.6	45.0	38.3	38.3
11PM-MID	76	0.0	138	0.0	1500	76	0	138	0.43	0	66.3	62.7	45.2	38.6	38.6

----- SITE BREAKDOWN DELAYS -----	
BREAKDOWN DURATION (MINS)	0
RANGE OF QUEUE DELAY - MIN (VEH-H) MAX	0.0
RANGE OF DIVN DELAY - MIN (VEH-H) MAX	0.0
AV BREAKDOWNS PER DAY	0.00
AV QUEUE DELAY/DAY (VEH-H)	0.0
AV DIVN DELAY/DAY (VEH-H)	0.0
AV TOTAL DELAY/DAY (VEH-H)	0.0

----- SITE ACCIDENT DELAYS -----	
ACCIDENT DURATION (MINS)	0
RANGE OF QUEUE DELAY - MIN (VEH-H) MAX	0.0
RANGE OF DIVN DELAY - MIN (VEH-H) MAX	0.0
AV ACCIDENTS PER DAY	0.00
AV QUEUE DELAY/DAY (VEH-H)	0.0
AV DIVN DELAY/DAY (VEH-H)	0.0
AV TOTAL DELAY/DAY (VEH-H)	0.0

AVERAGE ACCIDENT NUMBERS (PIA/DAY)	
MAIN ROUTE WITHOUT WORKS	0.0059
MAIN ROUTE WITH WORKS	0.0056
DIVERSION	0.1141

PIA: Personal Injury Accidents

IMPACTS ON ROAD USERS	
ROAD USER COSTS PER DAY (DOLLARS)	\$502
CONGESTED HOURS PER DAY*	0

*Delays Exceeding 15 Minutes

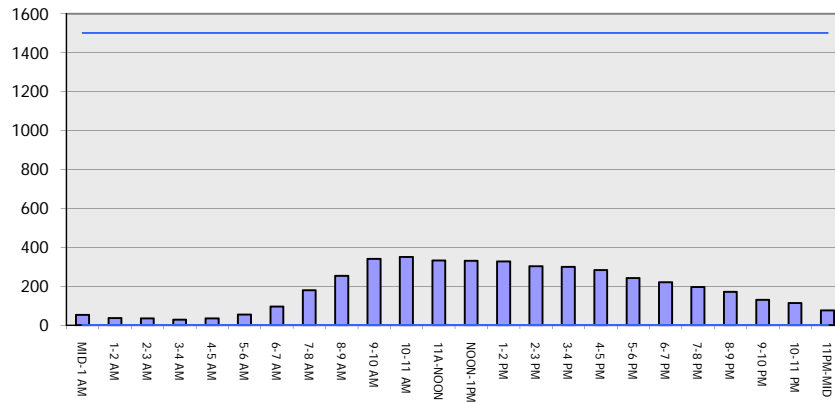
USH 53: USH 8 TO CTH I (BARRON COUNTY)
CONTINUOUS (24 HOUR) CLOSURE
DIVERSION ROUTE: CTH I - CTH SS - USH 8

MAY
 Analyzed for 2009
 Construction Season

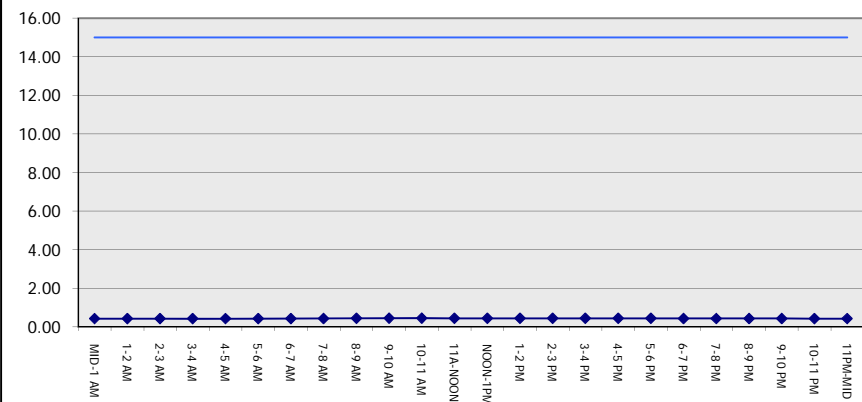
GRAPHICAL REPRESENTATION OF TRAFFIC MODEL INPUT AND OUTPUT

SATURDAY SOUTHBOUND DIRECTION

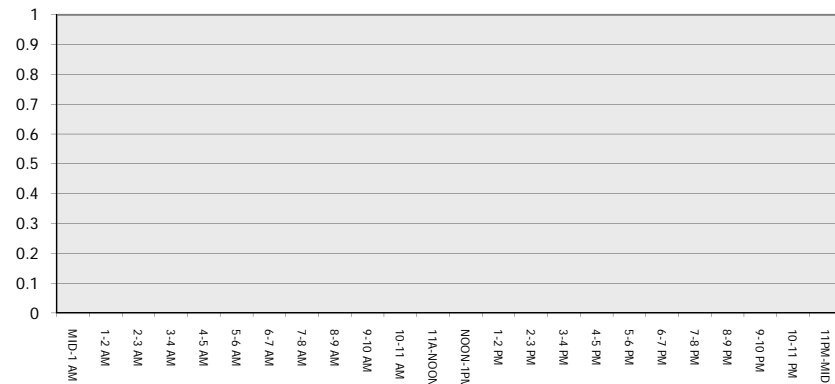
Main Route - Traffic Demand (Vehicles Per Hour)



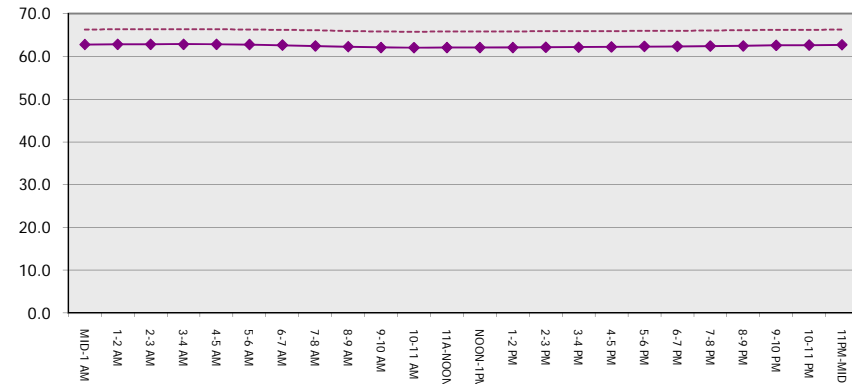
Main Route Average Delay Per Vehicle (Minutes)



Main Route - Average Queue Length (Vehicles)



Main Route - Average Speed (MPH)



USH 53: USH 8 TO CTH I (BARRON COUNTY) CONTINUOUS (24 HOUR) CLOSURE DIVERSION ROUTE: CTH I - CTH SS - USH 8	MAY
	Analyzed for 2009 Construction Season

SUMMARY OF TRAFFIC MODEL OUTPUT

SATURDAY NORTHBOUND DIRECTION

TIME OF DAY	FLOWS AND CAPACITY IN VEH/HR								AVERAGE SPEEDS IN MPH						
	MAIN		DIVERSION		SITE CAPA CITY	FLOW MAIN ROUTE	FLOW DIVER -TING	TOTAL DIVN FLOW	AV.DEL PER VEH (MINS)	AVERAGE QUEUE (VEH)	MAIN ROUTE		SITE	ALTERNATE ROUTE	
	DEMAND FLOW	PCT HEAVY	NORMAL FLOW	PCT HEAVY							WITHOUT WORK ZN	WITH WORK ZN		WITHOUT WORK ZN	WITH WORK ZN
MID-1 AM	84	0.0	153	0.0	1500	84	0	153	0.43	0	66.2	62.7	45.1	38.5	38.5
1-2 AM	60	0.0	110	0.0	1500	60	0	110	0.43	0	66.3	62.7	45.3	38.7	38.7
2-3 AM	34	0.0	63	0.0	1500	34	0	63	0.43	0	66.3	62.8	45.3	38.9	38.9
3-4 AM	33	0.0	61	0.0	1500	33	0	61	0.43	0	66.3	62.8	45.3	38.9	38.9
4-5 AM	45	0.0	80	0.0	1500	45	0	80	0.43	0	66.3	62.7	45.3	38.8	38.8
5-6 AM	75	0.0	138	0.0	1500	75	0	138	0.43	0	66.3	62.7	45.2	38.6	38.6
6-7 AM	106	0.0	193	0.0	1500	106	0	193	0.43	0	66.2	62.6	45.1	38.3	38.3
7-8 AM	185	0.0	337	0.0	1500	185	0	337	0.44	0	66.0	62.4	44.8	37.7	37.7
8-9 AM	287	0.0	523	0.0	1500	287	0	523	0.45	0	65.8	62.2	44.3	35.8	35.8
9-10 AM	358	0.0	653	0.0	1500	358	0	653	0.46	0	65.7	62.0	44.0	33.3	33.3
10-11 AM	417	0.0	760	0.0	1500	417	0	760	0.46	0	65.6	61.9	43.8	31.2	31.2
11A-NOON	435	0.0	794	0.0	1500	435	0	794	0.46	0	65.6	61.8	43.8	30.6	30.6
NOON-1PM	416	0.0	759	0.0	1500	416	0	759	0.46	0	65.6	61.9	43.8	31.2	31.2
1-2 PM	385	0.0	700	0.0	1500	385	0	700	0.46	0	65.6	61.9	44.0	32.4	32.4
2-3 PM	356	0.0	650	0.0	1500	356	0	650	0.46	0	65.7	62.0	44.1	33.3	33.3
3-4 PM	347	0.0	632	0.0	1500	347	0	632	0.46	0	65.8	62.0	44.1	33.7	33.7
4-5 PM	341	0.0	622	0.0	1500	341	0	622	0.46	0	65.8	62.0	44.2	33.8	33.8
5-6 PM	334	0.0	609	0.0	1500	334	0	609	0.45	0	65.8	62.0	44.2	34.1	34.1
6-7 PM	267	0.0	486	0.0	1500	267	0	486	0.45	0	65.9	62.2	44.4	36.5	36.5
7-8 PM	224	0.0	409	0.0	1500	224	0	409	0.44	0	66.0	62.3	44.6	37.4	37.4
8-9 PM	173	0.0	317	0.0	1500	173	0	317	0.44	0	66.1	62.4	44.8	37.8	37.8
9-10 PM	141	0.0	257	0.0	1500	141	0	257	0.44	0	66.1	62.5	44.9	38.1	38.1
10-11 PM	93	0.0	171	0.0	1500	93	0	171	0.43	0	66.2	62.6	45.1	38.4	38.4
11PM-MID	64	0.0	117	0.0	1500	64	0	117	0.43	0	66.3	62.7	45.2	38.6	38.6

----- SITE BREAKDOWN DELAYS -----	
BREAKDOWN DURATION (MINS)	0
RANGE OF QUEUE DELAY - MIN	0.0
(VEH-H) MAX	0.0
RANGE OF DIVN DELAY - MIN	0.0
(VEH-H) MAX	0.0
AV BREAKDOWNS PER DAY	0.00
AV QUEUE DELAY/DAY (VEH-H)	0.0
AV DIVN DELAY/DAY (VEH-H)	0.0
AV TOTAL DELAY/DAY (VEH-H)	0.0

----- SITE ACCIDENT DELAYS -----	
ACCIDENT DURATION (MINS)	0
RANGE OF QUEUE DELAY - MIN	0.0
(VEH-H) MAX	0.0
RANGE OF DIVN DELAY - MIN	0.0
(VEH-H) MAX	0.0
AV ACCIDENTS PER DAY	0.00
AV QUEUE DELAY/DAY (VEH-H)	0.0
AV DIVN DELAY/DAY (VEH-H)	0.0
AV TOTAL DELAY/DAY (VEH-H)	0.0

AVERAGE ACCIDENT NUMBERS (PIA/DAY)	
MAIN ROUTE WITHOUT WORKS	0.0069
MAIN ROUTE WITH WORKS	0.0066
DIVERSION	0.1340

PIA: Personal Injury Accidents

IMPACTS ON ROAD USERS	
ROAD USER COSTS PER DAY (DOLLARS)	\$596
CONGESTED HOURS PER DAY*	0

*Delays Exceeding 15 Minutes

**USH 53: USH 8 TO CTH I (BARRON COUNTY)
 CONTINUOUS (24 HOUR) CLOSURE
 DIVERSION ROUTE: CTH I - CTH SS - USH 8**

MAY
 Analyzed for 2009
 Construction Season

GRAPHICAL REPRESENTATION OF TRAFFIC MODEL INPUT AND OUTPUT
SATURDAY NORTHBOUND DIRECTION

