

<b>USH 53: USH 8 TO CTH I (BARRON COUNTY)</b> <b>CONTINUOUS (24 HOUR) CLOSURE</b> <b>DIVERSION ROUTE: CTH I - CTH SS - USH 8</b>	<b>MAY</b>
	Analyzed for 2009 Construction Season

**SUMMARY OF TRAFFIC MODEL OUTPUT**

MON-THUR                      SOUTHBOUND DIRECTION

TIME OF DAY	FLOWS AND CAPACITY IN VEH/HR						AVERAGE SPEEDS IN MPH								
	MAIN ROUTE		ALTERNATE ROUTE		SITE CAPA CITY	FLOW MAIN ROUTE	FLOW DIVER -TING	TOTAL DIVN FLOW	AV.DEL PER VEH (MINS)	AVERAGE QUEUE (VEH)	MAIN ROUTE		ALTERNATE ROUTE		
	DEMAND FLOW	PCT HEAVY	NORMAL FLOW	PCT HEAVY							WITHOUT WORK ZN	WITH WORK ZN	SITE	WITHOUT WORK ZN	WITH WORK ZN
MID-1 AM	33	0.0	62	0.0	1500	33	0	62	0.43	0	66.3	62.8	45.3	38.9	38.9
1-2 AM	24	0.0	44	0.0	1500	24	0	44	0.42	0	66.3	62.8	45.4	38.9	38.9
2-3 AM	23	0.0	42	0.0	1500	23	0	42	0.42	0	66.3	62.8	45.4	38.9	38.9
3-4 AM	21	0.0	39	0.0	1500	21	0	39	0.42	0	66.3	62.8	45.4	38.9	38.9
4-5 AM	39	0.0	71	0.0	1500	39	0	71	0.43	0	66.3	62.7	45.3	38.8	38.8
5-6 AM	97	0.0	177	0.0	1500	97	0	177	0.43	0	66.2	62.6	45.1	38.4	38.4
6-7 AM	182	0.0	333	0.0	1500	182	0	333	0.44	0	66.1	62.4	44.8	37.8	37.8
7-8 AM	249	0.0	454	0.0	1500	249	0	454	0.45	0	66.0	62.2	44.5	37.1	37.1
8-9 AM	261	0.0	476	0.0	1500	261	0	476	0.45	0	65.9	62.2	44.5	36.7	36.7
9-10 AM	285	0.0	518	0.0	1500	285	0	518	0.45	0	65.8	62.2	44.3	35.8	35.8
10-11 AM	305	0.0	554	0.0	1500	305	0	554	0.45	0	65.8	62.1	44.3	35.1	35.1
11A-NOON	324	0.0	585	0.0	1500	324	0	585	0.45	0	65.8	62.0	44.2	34.6	34.6
NOON-1PM	351	0.0	635	0.0	1500	351	0	635	0.46	0	65.7	62.0	44.1	33.6	33.6
1-2 PM	366	0.0	664	0.0	1500	366	0	664	0.46	0	65.7	62.0	44.0	33.0	33.0
2-3 PM	389	0.0	706	0.0	1500	389	0	706	0.46	0	65.6	61.9	44.0	32.2	32.2
3-4 PM	443	0.0	807	0.0	1500	443	0	807+	0.47	0	65.6	61.8	43.7	30.2	30.2
4-5 PM	419	0.0	764	0.0	1500	419	0	764	0.46	0	65.6	61.9	43.8	31.1	31.1
5-6 PM	328	0.0	597	0.0	1500	328	0	597	0.45	0	65.8	62.0	44.2	34.3	34.3
6-7 PM	223	0.0	408	0.0	1500	223	0	408	0.44	0	66.0	62.3	44.6	37.4	37.4
7-8 PM	169	0.0	310	0.0	1500	169	0	310	0.44	0	66.1	62.4	44.8	37.8	37.8
8-9 PM	139	0.0	252	0.0	1500	139	0	252	0.44	0	66.1	62.5	45.0	38.1	38.1
9-10 PM	109	0.0	199	0.0	1500	109	0	199	0.43	0	66.2	62.6	45.1	38.3	38.3
10-11 PM	75	0.0	138	0.0	1500	75	0	138	0.43	0	66.3	62.7	45.2	38.6	38.6
11PM-MID	46	0.0	82	0.0	1500	46	0	82	0.43	0	66.3	62.7	45.3	38.8	38.8

+ INDICATES DIVERSION FLOW EXCEEDS USER-SPECIFIED WARNING LIMIT

*----- SITE BREAKDOWN DELAYS -----*	
BREAKDOWN DURATION (MINS)	0
RANGE OF QUEUE DELAY - MIN	0.0
(VEH-H) MAX	0.0
RANGE OF DIVN DELAY - MIN	0.0
(VEH-H) MAX	0.0
AV BREAKDOWNS PER DAY	0.00
AV QUEUE DELAY/DAY (VEH-H)	0.0
AV DIVN DELAY/DAY (VEH-H)	0.0
AV TOTAL DELAY/DAY (VEH-H)	0.0

*----- SITE ACCIDENT DELAYS -----*	
ACCIDENT DURATION (MINS)	0
RANGE OF QUEUE DELAY - MIN	0.0
(VEH-H) MAX	0.0
RANGE OF DIVN DELAY - MIN	0.0
(VEH-H) MAX	0.0
AV ACCIDENTS PER DAY	0.00
AV QUEUE DELAY/DAY (VEH-H)	0.0
AV DIVN DELAY/DAY (VEH-H)	0.0
AV TOTAL DELAY/DAY (VEH-H)	0.0

AVERAGE ACCIDENT NUMBERS (PIA/DAY)	
MAIN ROUTE WITHOUT WORKS	0.0065
MAIN ROUTE WITH WORKS	0.0062
DIVERSION	0.1246

PIA: Personal Injury Accidents

IMPACTS ON ROAD USERS	
ROAD USER COSTS PER DAY ( DOLLARS)	\$440
CONGESTED HOURS PER DAY*	0

\*Delays Exceeding 15 Minutes

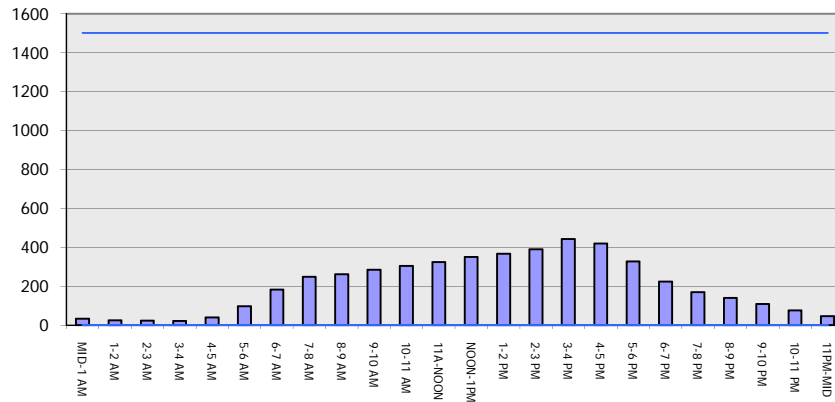
**USH 53: USH 8 TO CTH I (BARRON COUNTY)  
 CONTINUOUS (24 HOUR) CLOSURE  
 DIVERSION ROUTE: CTH I - CTH SS - USH 8**

**MAY**  
 Analyzed for 2009  
 Construction Season

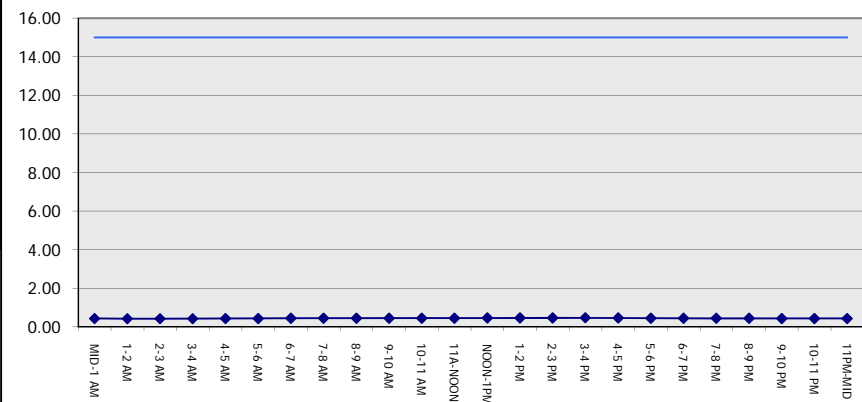
**GRAPHICAL REPRESENTATION OF TRAFFIC MODEL INPUT AND OUTPUT**

**MON-THUR SOUTHBOUND DIRECTION**

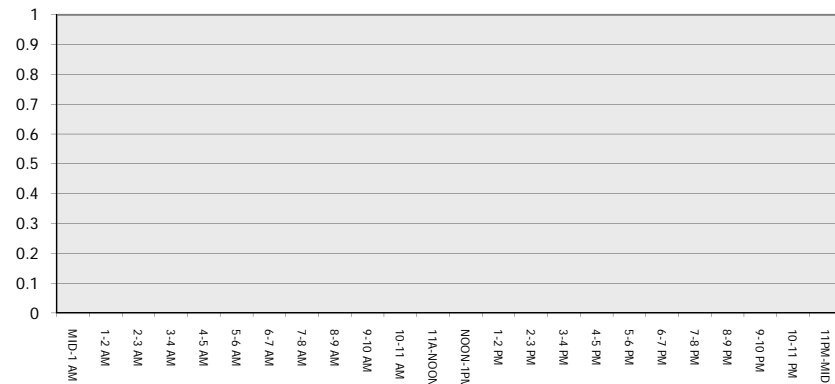
**Main Route - Traffic Demand (Vehicles Per Hour)**



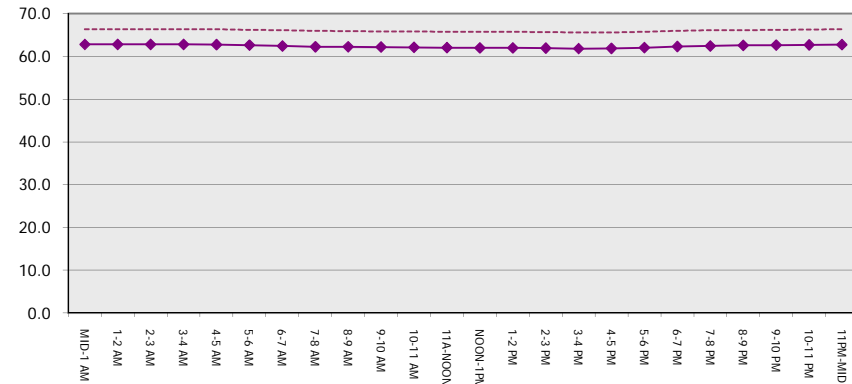
**Main Route Average Delay Per Vehicle (Minutes)**



**Main Route - Average Queue Length (Vehicles)**



**Main Route - Average Speed (MPH)**



<b>USH 53: USH 8 TO CTH I (BARRON COUNTY)</b> <b>CONTINUOUS (24 HOUR) CLOSURE</b> <b>DIVERSION ROUTE: CTH I - CTH SS - USH 8</b>	<b>MAY</b>
	Analyzed for 2009 Construction Season

**SUMMARY OF TRAFFIC MODEL OUTPUT**

MON-THUR                      NORTHBOUND DIRECTION

TIME OF DAY	FLOWS AND CAPACITY IN VEH/HR								AVERAGE SPEEDS IN MPH						
	MAIN		DIVERSION		SITE CAPA CITY	FLOW MAIN ROUTE	FLOW DIVER -TING	TOTAL DIVN FLOW	AV.DEL PER VEH (MINS)	AVERAGE QUEUE (VEH)	MAIN ROUTE		SITE	ALTERNATE ROUTE	
	DEMAND FLOW	PCT HEAVY	NORMAL FLOW	PCT HEAVY							WITHOUT WORK ZN	WITH WORK ZN		WITHOUT WORK ZN	WITH WORK ZN
MID-1 AM	27	0.0	49	0.0	1500	27	0	49	0.43	0	66.3	62.8	45.4	38.9	38.9
1-2 AM	22	0.0	40	0.0	1500	22	0	40	0.42	0	66.3	62.8	45.4	38.9	38.9
2-3 AM	20	0.0	37	0.0	1500	20	0	37	0.42	0	66.3	62.8	45.4	39.0	39.0
3-4 AM	24	0.0	44	0.0	1500	24	0	44	0.42	0	66.3	62.8	45.4	38.9	38.9
4-5 AM	44	0.0	78	0.0	1500	44	0	78	0.43	0	66.3	62.7	45.3	38.8	38.8
5-6 AM	97	0.0	178	0.0	1500	97	0	178	0.43	0	66.2	62.6	45.1	38.4	38.4
6-7 AM	196	0.0	357	0.0	1500	196	0	357	0.44	0	66.0	62.3	44.7	37.6	37.6
7-8 AM	305	0.0	557	0.0	1500	305	0	557	0.45	0	65.8	62.1	44.3	35.1	35.1
8-9 AM	288	0.0	524	0.0	1500	288	0	524	0.45	0	65.8	62.2	44.3	35.8	35.8
9-10 AM	302	0.0	551	0.0	1500	302	0	551	0.45	0	65.8	62.1	44.3	35.2	35.2
10-11 AM	290	0.0	528	0.0	1500	290	0	528	0.45	0	65.8	62.2	44.3	35.6	35.6
11A-NOON	288	0.0	526	0.0	1500	288	0	526	0.45	0	65.8	62.2	44.3	35.7	35.7
NOON-1PM	295	0.0	538	0.0	1500	295	0	538	0.45	0	65.8	62.1	44.3	35.5	35.5
1-2 PM	306	0.0	560	0.0	1500	306	0	560	0.45	0	65.8	62.1	44.3	35.0	35.0
2-3 PM	301	0.0	551	0.0	1500	301	0	551	0.45	0	65.8	62.1	44.3	35.2	35.2
3-4 PM	331	0.0	603	0.0	1500	331	0	603	0.45	0	65.8	62.0	44.2	34.2	34.2
4-5 PM	358	0.0	652	0.0	1500	358	0	652	0.46	0	65.7	62.0	44.0	33.3	33.3
5-6 PM	343	0.0	625	0.0	1500	343	0	625	0.46	0	65.8	62.0	44.1	33.8	33.8
6-7 PM	239	0.0	438	0.0	1500	239	0	438	0.45	0	66.0	62.3	44.5	37.3	37.3
7-8 PM	190	0.0	344	0.0	1500	190	0	344	0.44	0	66.0	62.4	44.7	37.7	37.7
8-9 PM	159	0.0	289	0.0	1500	159	0	289	0.44	0	66.1	62.5	44.8	37.9	37.9
9-10 PM	129	0.0	231	0.0	1500	129	0	231	0.43	0	66.1	62.5	45.0	38.1	38.1
10-11 PM	77	0.0	139	0.0	1500	77	0	139	0.43	0	66.3	62.7	45.2	38.6	38.6
11PM-MID	51	0.0	90	0.0	1500	51	0	90	0.43	0	66.3	62.7	45.3	38.8	38.8

*----- SITE BREAKDOWN DELAYS -----*	
BREAKDOWN DURATION (MINS)	0
RANGE OF QUEUE DELAY - MIN	0.0
(VEH-H) MAX	0.0
RANGE OF DIVN DELAY - MIN	0.0
(VEH-H) MAX	0.0
AV BREAKDOWNS PER DAY	0.00
AV QUEUE DELAY/DAY (VEH-H)	0.0
AV DIVN DELAY/DAY (VEH-H)	0.0
AV TOTAL DELAY/DAY (VEH-H)	0.0

*----- SITE ACCIDENT DELAYS -----*	
ACCIDENT DURATION (MINS)	0
RANGE OF QUEUE DELAY - MIN	0.0
(VEH-H) MAX	0.0
RANGE OF DIVN DELAY - MIN	0.0
(VEH-H) MAX	0.0
AV ACCIDENTS PER DAY	0.00
AV QUEUE DELAY/DAY (VEH-H)	0.0
AV DIVN DELAY/DAY (VEH-H)	0.0
AV TOTAL DELAY/DAY (VEH-H)	0.0

AVERAGE ACCIDENT NUMBERS (PIA/DAY)	
MAIN ROUTE WITHOUT WORKS	0.0062
MAIN ROUTE WITH WORKS	0.0059
DIVERSION	0.1192

PIA: Personal Injury Accidents

IMPACTS ON ROAD USERS	
ROAD USER COSTS PER DAY ( DOLLARS)	\$418
CONGESTED HOURS PER DAY*	0

\*Delays Exceeding 15 Minutes

**USH 53: USH 8 TO CTH I (BARRON COUNTY)  
 CONTINUOUS (24 HOUR) CLOSURE  
 DIVERSION ROUTE: CTH I - CTH SS - USH 8**

**MAY**  
 Analyzed for 2009  
 Construction Season

**GRAPHICAL REPRESENTATION OF TRAFFIC MODEL INPUT AND OUTPUT**  
**MON-THUR NORTHBOUND DIRECTION**

