

<b>USH 53: USH 8 TO CTH I (BARRON COUNTY)</b> <b>CONTINUOUS (24 HOUR) CLOSURE</b> <b>DIVERSION ROUTE: CTH I - CTH SS - USH 8</b>	<b>MAY</b>
	Analyzed for 2009 Construction Season

**SUMMARY OF TRAFFIC MODEL OUTPUT**

**FRIDAY SOUTHBOUND DIRECTION**

TIME OF DAY	FLOWS AND CAPACITY IN VEH/HR							AVERAGE SPEEDS IN MPH							
	MAIN ROUTE		ALTERNATE ROUTE		SITE CAPA CITY	FLOW MAIN ROUTE	FLOW DIVER -TING	TOTAL DIVN FLOW	AV.DEL PER VEH (MINS)	AVERAGE QUEUE (VEH)	MAIN ROUTE		ALTERNATE ROUTE		
	DEMAND FLOW	PCT HEAVY	NORMAL FLOW	PCT HEAVY							WITHOUT WORK ZN	WITH WORK ZN	SITE	WITHOUT WORK ZN	WITH WORK ZN
MID-1 AM	45	0.0	81	0.0	1500	45	0	81	0.43	0	66.3	62.7	45.3	38.8	38.8
1-2 AM	28	0.0	51	0.0	1500	28	0	51	0.43	0	66.3	62.8	45.4	38.9	38.9
2-3 AM	28	0.0	53	0.0	1500	28	0	53	0.43	0	66.3	62.8	45.4	38.9	38.9
3-4 AM	27	0.0	49	0.0	1500	27	0	49	0.43	0	66.3	62.8	45.4	38.9	38.9
4-5 AM	36	0.0	65	0.0	1500	36	0	65	0.43	0	66.3	62.8	45.3	38.9	38.9
5-6 AM	84	0.0	153	0.0	1500	84	0	153	0.43	0	66.2	62.7	45.1	38.5	38.5
6-7 AM	169	0.0	309	0.0	1500	169	0	309	0.44	0	66.1	62.4	44.8	37.8	37.8
7-8 AM	239	0.0	437	0.0	1500	239	0	437	0.45	0	66.0	62.3	44.5	37.3	37.3
8-9 AM	260	0.0	474	0.0	1500	260	0	474	0.45	0	65.9	62.2	44.5	36.7	36.7
9-10 AM	296	0.0	541	0.0	1500	296	0	541	0.45	0	65.8	62.1	44.3	35.4	35.4
10-11 AM	321	0.0	585	0.0	1500	321	0	585	0.45	0	65.8	62.0	44.2	34.6	34.6
11A-NOON	345	0.0	629	0.0	1500	345	0	629	0.46	0	65.8	62.0	44.1	33.7	33.7
NOON-1PM	367	0.0	670	0.0	1500	367	0	670	0.46	0	65.7	62.0	44.0	32.9	32.9
1-2 PM	371	0.0	677	0.0	1500	371	0	677	0.46	0	65.7	62.0	44.0	32.8	32.8
2-3 PM	403	0.0	734	0.0	1500	403	0	734	0.46	0	65.6	61.9	43.9	31.7	31.7
3-4 PM	449	0.0	818	0.0	1500	449	0	818+	0.47	0	65.6	61.7	43.7	29.7	29.7
4-5 PM	439	0.0	801	0.0	1500	439	0	801	0.47	0	65.6	61.8	43.7	30.4	30.4
5-6 PM	388	0.0	706	0.0	1500	388	0	706	0.46	0	65.6	61.9	44.0	32.2	32.2
6-7 PM	285	0.0	520	0.0	1500	285	0	520	0.45	0	65.8	62.2	44.3	35.8	35.8
7-8 PM	205	0.0	374	0.0	1500	205	0	374	0.44	0	66.0	62.3	44.6	37.6	37.6
8-9 PM	148	0.0	271	0.0	1500	148	0	271	0.44	0	66.1	62.5	44.9	38.0	38.0
9-10 PM	134	0.0	244	0.0	1500	134	0	244	0.44	0	66.1	62.5	45.0	38.1	38.1
10-11 PM	108	0.0	196	0.0	1500	108	0	196	0.43	0	66.2	62.6	45.1	38.3	38.3
11PM-MID	70	0.0	128	0.0	1500	70	0	128	0.43	0	66.3	62.7	45.2	38.6	38.6

+ INDICATES DIVERSION FLOW EXCEEDS USER-SPECIFIED WARNING LIMIT

*----- SITE BREAKDOWN DELAYS -----*	
BREAKDOWN DURATION (MINS)	0
RANGE OF QUEUE DELAY - MIN (VEH-H) MAX	0.0
RANGE OF DIVN DELAY - MIN (VEH-H) MAX	0.0
AV BREAKDOWNS PER DAY	0.00
AV QUEUE DELAY/DAY (VEH-H)	0.0
AV DIVN DELAY/DAY (VEH-H)	0.0
AV TOTAL DELAY/DAY (VEH-H)	0.0

*----- SITE ACCIDENT DELAYS -----*	
ACCIDENT DURATION (MINS)	0
RANGE OF QUEUE DELAY - MIN (VEH-H) MAX	0.0
RANGE OF DIVN DELAY - MIN (VEH-H) MAX	0.0
AV ACCIDENTS PER DAY	0.00
AV QUEUE DELAY/DAY (VEH-H)	0.0
AV DIVN DELAY/DAY (VEH-H)	0.0
AV TOTAL DELAY/DAY (VEH-H)	0.0

AVERAGE ACCIDENT NUMBERS (PIA/DAY)	
MAIN ROUTE WITHOUT WORKS	0.0069
MAIN ROUTE WITH WORKS	0.0066
DIVERSION	0.1336

PIA: Personal Injury Accidents

IMPACTS ON ROAD USERS	
ROAD USER COSTS PER DAY ( DOLLARS)	\$488
CONGESTED HOURS PER DAY*	0

\*Delays Exceeding 15 Minutes

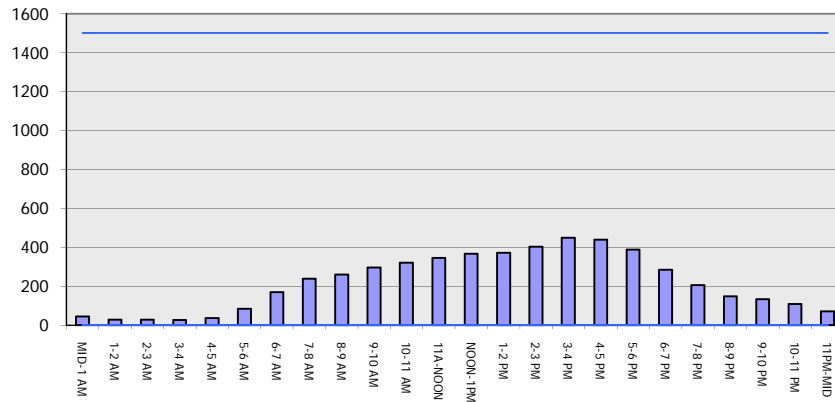
**USH 53: USH 8 TO CTH I (BARRON COUNTY)**  
**CONTINUOUS (24 HOUR) CLOSURE**  
**DIVERSION ROUTE: CTH I - CTH SS - USH 8**

**MAY**  
 Analyzed for 2009  
 Construction Season

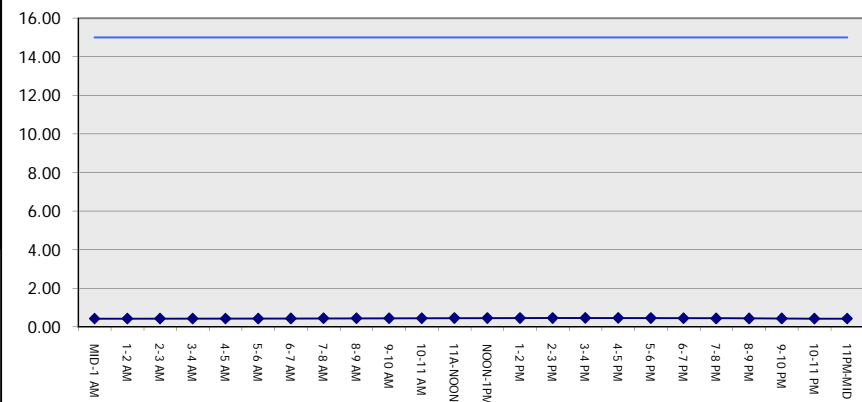
**GRAPHICAL REPRESENTATION OF TRAFFIC MODEL INPUT AND OUTPUT**

**FRIDAY SOUTHBOUND DIRECTION**

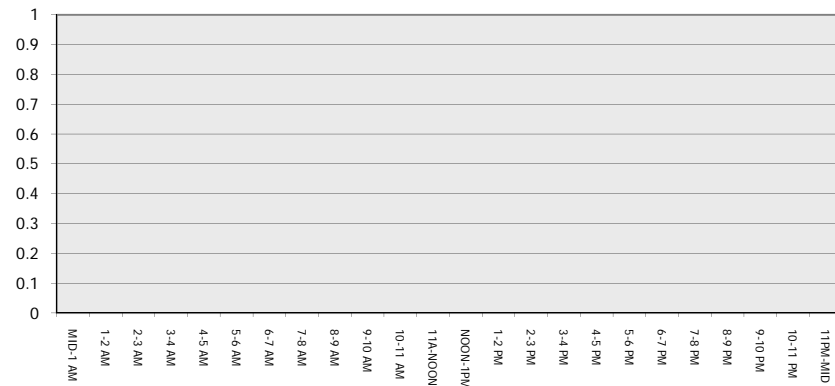
**Main Route - Traffic Demand (Vehicles Per Hour)**



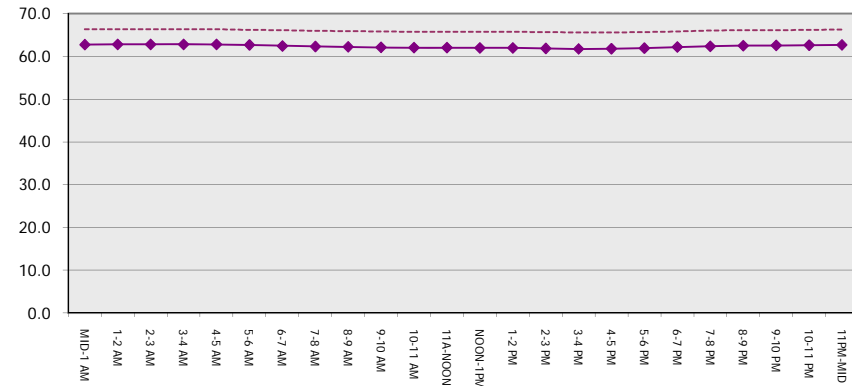
**Main Route Average Delay Per Vehicle (Minutes)**



**Main Route - Average Queue Length (Vehicles)**



**Main Route - Average Speed (MPH)**



<b>USH 53: USH 8 TO CTH I (BARRON COUNTY)</b> <b>CONTINUOUS (24 HOUR) CLOSURE</b> <b>DIVERSION ROUTE: CTH I - CTH SS - USH 8</b>	<b>MAY</b>
	Analyzed for 2009 Construction Season

**SUMMARY OF TRAFFIC MODEL OUTPUT**

FRIDAY NORTHBOUND DIRECTION

TIME OF DAY	FLOWS AND CAPACITY IN VEH/HR								AVERAGE SPEEDS IN MPH						
	MAIN		DIVERSION		SITE CAPA CITY	FLOW MAIN ROUTE	FLOW DIVER -TING	TOTAL DIVN FLOW	AV.DEL PER VEH (MINS)	AVERAGE QUEUE (VEH)	MAIN ROUTE		SITE	ALTERNATE ROUTE	
	DEMAND FLOW	PCT HEAVY	NORMAL FLOW	PCT HEAVY							WITHOUT WORK ZN	WITH WORK ZN		WITHOUT WORK ZN	WITH WORK ZN
MID-1 AM	49	0.0	89	0.0	1500	49	0	89	0.43	0	66.3	62.7	45.3	38.8	38.8
1-2 AM	37	0.0	67	0.0	1500	37	0	67	0.43	0	66.3	62.8	45.3	38.8	38.8
2-3 AM	31	0.0	57	0.0	1500	31	0	57	0.43	0	66.3	62.8	45.4	38.9	38.9
3-4 AM	40	0.0	72	0.0	1500	40	0	72	0.43	0	66.3	62.7	45.3	38.8	38.8
4-5 AM	51	0.0	93	0.0	1500	51	0	93	0.43	0	66.3	62.7	45.3	38.8	38.8
5-6 AM	107	0.0	195	0.0	1500	107	0	195	0.43	0	66.2	62.6	45.1	38.3	38.3
6-7 AM	194	0.0	353	0.0	1500	194	0	353	0.44	0	66.0	62.3	44.7	37.6	37.6
7-8 AM	311	0.0	567	0.0	1500	311	0	567	0.45	0	65.8	62.1	44.2	34.9	34.9
8-9 AM	342	0.0	623	0.0	1500	342	0	623	0.46	0	65.8	62.0	44.1	33.8	33.8
9-10 AM	368	0.0	672	0.0	1500	368	0	672	0.46	0	65.7	62.0	44.0	32.9	32.9
10-11 AM	407	0.0	741	0.0	1500	407	0	741	0.46	0	65.6	61.9	43.8	31.5	31.5
11A-NOON	412	0.0	751	0.0	1500	412	0	751	0.46	0	65.6	61.9	43.8	31.4	31.4
NOON-1PM	437	0.0	798	0.0	1500	437	0	798	0.46	0	65.6	61.8	43.7	30.5	30.5
1-2 PM	452	0.0	826	0.0	1500	452	0	826+	0.47	0	65.5	61.7	43.7	29.4	29.4
2-3 PM	479	0.0	873	0.0	1500	479	0	873+	0.47	0	65.5	61.7	43.6	27.4	27.4
3-4 PM	519	0.0	946	0.0	1500	519	0	946+	0.47	0	65.4	61.6	43.4	24.3	24.3
4-5 PM	596	0.0	1086	0.0	1500	596	0	1086+	0.48	0	65.3	61.4	43.2	19.3	19.3
5-6 PM	630	0.0	1148	0.0	1500	630	0	1148+	0.48	0	65.2	61.4	43.0	19.3	19.3
6-7 PM	546	0.0	995	0.0	1500	546	0	995+	0.48	0	65.4	61.5	43.3	22.4	22.4
7-8 PM	434	0.0	792	0.0	1500	434	0	792	0.46	0	65.6	61.8	43.8	30.6	30.6
8-9 PM	324	0.0	590	0.0	1500	324	0	590	0.45	0	65.8	62.0	44.2	34.5	34.5
9-10 PM	276	0.0	503	0.0	1500	276	0	503	0.45	0	65.9	62.2	44.4	36.1	36.1
10-11 PM	190	0.0	347	0.0	1500	190	0	347	0.44	0	66.0	62.4	44.7	37.7	37.7
11PM-MID	123	0.0	224	0.0	1500	123	0	224	0.43	0	66.1	62.5	45.0	38.2	38.2

+ INDICATES DIVERSION FLOW EXCEEDS USER-SPECIFIED WARNING LIMIT

*----- SITE BREAKDOWN DELAYS -----*	
BREAKDOWN DURATION (MINS)	0
RANGE OF QUEUE DELAY - MIN	0.0
(VEH-H) MAX	0.0
RANGE OF DIVN DELAY - MIN	0.0
(VEH-H) MAX	0.0
AV BREAKDOWNS PER DAY	0.00
AV QUEUE DELAY/DAY (VEH-H)	0.0
AV DIVN DELAY/DAY (VEH-H)	0.0
AV TOTAL DELAY/DAY (VEH-H)	0.0

*----- SITE ACCIDENT DELAYS -----*	
ACCIDENT DURATION (MINS)	0
RANGE OF QUEUE DELAY - MIN	0.0
(VEH-H) MAX	0.0
RANGE OF DIVN DELAY - MIN	0.0
(VEH-H) MAX	0.0
AV ACCIDENTS PER DAY	0.00
AV QUEUE DELAY/DAY (VEH-H)	0.0
AV DIVN DELAY/DAY (VEH-H)	0.0
AV TOTAL DELAY/DAY (VEH-H)	0.0

AVERAGE ACCIDENT NUMBERS (PIA/DAY)	
MAIN ROUTE WITHOUT WORKS	0.0097
MAIN ROUTE WITH WORKS	0.0092
DIVERSION	0.1873

PIA: Personal Injury Accidents

IMPACTS ON ROAD USERS	
ROAD USER COSTS PER DAY ( DOLLARS)	\$698
CONGESTED HOURS PER DAY*	0

\*Delays Exceeding 15 Minutes

**USH 53: USH 8 TO CTH I (BARRON COUNTY)  
 CONTINUOUS (24 HOUR) CLOSURE  
 DIVERSION ROUTE: CTH I - CTH SS - USH 8**

**MAY**  
 Analyzed for 2009  
 Construction Season

**GRAPHICAL REPRESENTATION OF TRAFFIC MODEL INPUT AND OUTPUT**  
**FRIDAY NORTHBOUND DIRECTION**

