

USH 41: STH 125 TO USH 10 (WINNEBAGO AND OUTAGAMIE COUNTIES) NIGHTTIME 2 LANE CLOSURE NO DIVERSION ROUTE (MAX QUEUE METHOD)	OCTOBER
	Analyzed for 2009 Construction Season

SUMMARY OF TRAFFIC MODEL OUTPUT

SATURDAY SOUTHBOUND DIRECTION

TIME OF DAY	FLOWS AND CAPACITY IN VEH/HR							AVERAGE SPEEDS IN MPH			
	MAIN ROUTE		SITE CAPA CITY	FLOW		AV.DEL PER VEH (MINS)	AVERAGE QUEUE (VEH)	MAIN ROUTE		SITE	
	DEMAND FLOW	PCT HEAVY		MAIN ROUTE	'DIVER TED'			WITHOUT WORK ZONE	WITH WORK ZONE		
MID-1 AM	395	0.0	1500	395	0	0.52	0	70.2	58.6	43.9	
1-2 AM	259	0.0	1500	259	0	0.50	0	70.2	58.9	44.5	
2-3 AM	247	0.0	1500	247	0	0.50	0	70.2	59.0	44.5	
3-4 AM	174	0.0	1500	174	0	0.49	0	70.2	59.2	44.8	
4-5 AM	231	0.0	1500	231	0	0.50	0	70.2	59.0	44.6	
5-6 AM	405	0.0	1500	405	0	0.52	0	70.2	58.6	43.9	
6-7 AM	728	0.0	1500	728	0	0.56	0	69.8	57.8	42.7	
7-8 AM	1051	0.0	1500	1051	0	0.59	0	69.4	56.9	41.5	
8-9 AM	1376	0.0	OFF	1376	0	0.00	0	69.0	69.0	69.0	
9-10 AM	1657	0.0	OFF	1657	0	0.00	0	68.7	68.7	68.7	
10-11 AM	2003	0.0	OFF	2003	0	0.00	0	68.2	68.2	68.2	
11AM-NOON	2240	0.0	OFF	2240	0	0.00	0	67.9	67.9	67.9	
NOON-1PM	2512	0.0	OFF	2512	0	0.00	0	67.6	67.6	67.6	
1-2 PM	2493	0.0	OFF	2493	0	0.00	0	67.6	67.6	67.6	
2-3 PM	2584	0.0	OFF	2584	0	0.00	0	67.5	67.5	67.5	
3-4 PM	2596	0.0	OFF	2596	0	0.00	0	67.5	67.5	67.5	
4-5 PM	2648	0.0	OFF	2648	0	0.00	0	67.4	67.4	67.4	
5-6 PM	2439	0.0	OFF	2439	0	0.00	0	67.7	67.7	67.7	
6-7 PM	2113	0.0	1499	1843	270	10.70+	285	68.1	13.8	30.8	
7-8 PM	1852	0.0	1500	1522	330	16.26+	397	68.4	9.8	30.8	
8-9 PM	1655	0.0	1500	1524	132	16.26+	397	68.7	9.8	30.8	
9-10 PM	1440	0.0	1500	1440	0	15.53+	378	68.9	10.2	30.8	
10-11 PM	1030	0.0	1499	1030	0	3.53	135	69.4	29.9	37.3	
11PM-MID	696	0.0	1500	696	0	0.55	0	69.9	57.8	42.8	

"OFF" INDICATES NO ROAD WORK (ALL LANES OPEN TO TRAFFIC)

+ INDICATES QUEUEING EXCEEDS USER-SPECIFIED MAXIMUM LIMIT

----- SITE BREAKDOWN DELAYS -----	
BREAKDOWN DURATION (MINS)	0
RANGE OF QUEUE DELAY - MIN (VEH-H) MAX	0.0
AV BREAKDOWNS PER DAY	0.00
AV QUEUE DELAY/DAY (VEH-H)	0.0
AV TOTAL DELAY/DAY (VEH-H)	0.0

----- SITE ACCIDENT DELAYS -----	
BREAKDOWN DURATION (MINS)	0
RANGE OF QUEUE DELAY - MIN (VEH-H) MAX	0
AV BREAKDOWNS PER DAY	0
AV QUEUE DELAY/DAY (VEH-H)	0
AV TOTAL DELAY/DAY (VEH-H)	0

AVERAGE ACCIDENT NUMBERS (PIA/DAY)	
MAIN ROUTE WITHOUT WORKS	0.0172
MAIN ROUTE WITH WORKS	0.0161
'DIVERSION'	0.0008
PIA: Personal Injury Accidents	
IMPACTS ON ROAD USERS	
ROAD USER COSTS PER DAY	\$30,026
CONGESTED HOURS PER DAY*	4

*Delays Exceeding User-Specified Maximum

**USH 41: STH 125 TO USH 10 (WINNEBAGO AND OUTAGAMIE COUNTIES)
 NIGHTTIME 2 LANE CLOSURE
 NO DIVERSION ROUTE (MAX QUEUE METHOD)**

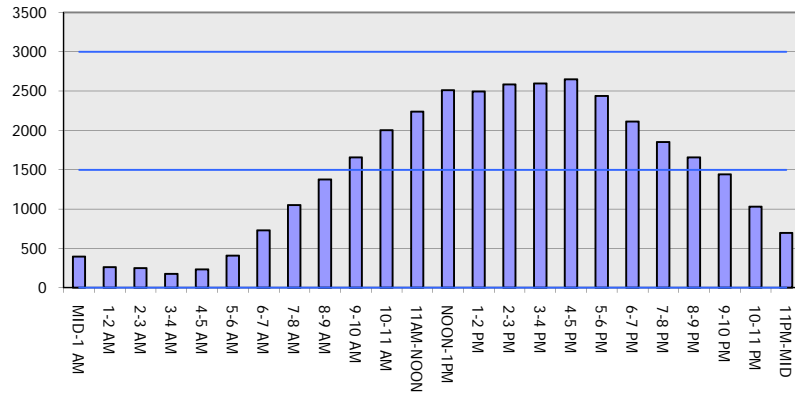
OCTOBER

Analyzed for 2009
 Construction Season

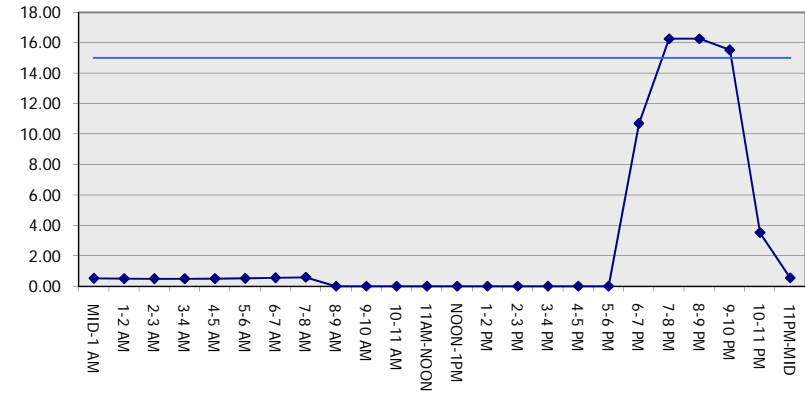
GRAPHICAL REPRESENTATION OF TRAFFIC MODEL INPUT AND OUTPUT

SATURDAY SOUTHBOUND DIRECTION

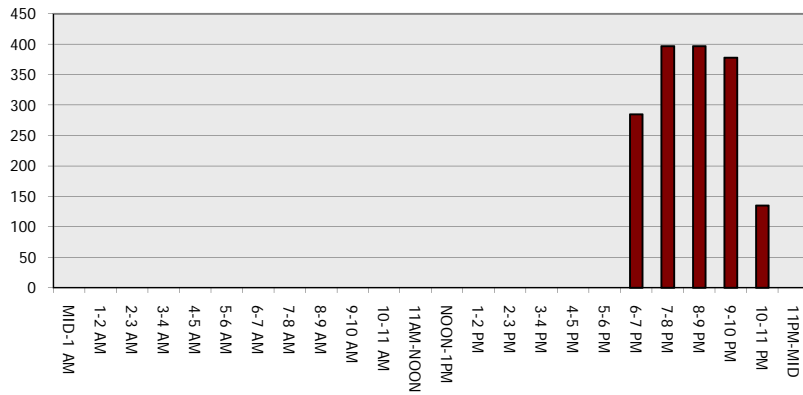
Main Route - Traffic Demand (Vehicles Per Hour)



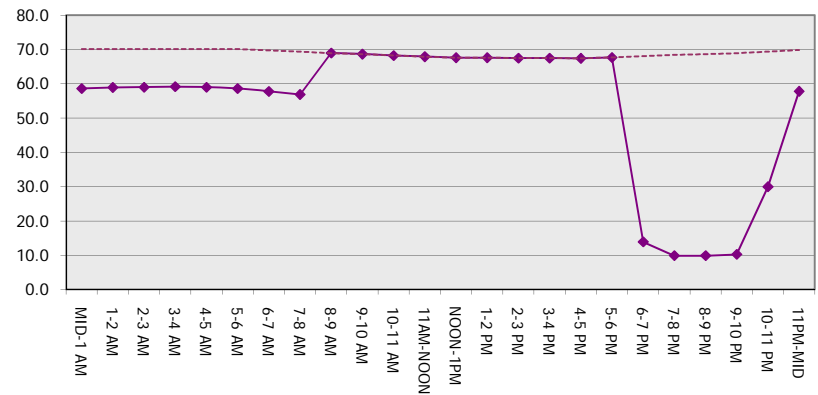
Main Route Average Delay Per Vehicle (Minutes)



Main Route - Average Queue Length (Vehicles)



Main Route - Average Speed (MPH)



USH 41: STH 125 TO USH 10 (WINNEBAGO AND OUTAGAMIE COUNTIES) NIGHTTIME 2 LANE CLOSURE NO DIVERSION ROUTE (MAX QUEUE METHOD)	OCTOBER
	Analyzed for 2009 Construction Season

SUMMARY OF TRAFFIC MODEL OUTPUT

SATURDAY NORTHBOUND DIRECTION

TIME OF DAY	FLOWS AND CAPACITY IN VEH/HR						AVERAGE SPEEDS IN MPH			
	MAIN ROUTE		SITE CAPA CITY	FLOW		AV.DEL PER VEH (MINS)	AVERAGE QUEUE (VEH)	MAIN ROUTE		SITE
	DEMAND FLOW	PCT HEAVY		MAIN ROUTE	'DIVER TED'			WITHOUT WORK ZONE	WITH WORK ZONE	
MID-1 AM	375	0.0	1500	375	0	0.52	0	70.2	58.7	44.0
1-2 AM	215	0.0	1500	215	0	0.50	0	70.2	59.1	44.6
2-3 AM	206	0.0	1500	206	0	0.50	0	70.2	59.1	44.6
3-4 AM	162	0.0	1500	162	0	0.49	0	70.2	59.2	44.8
4-5 AM	232	0.0	1500	232	0	0.50	0	70.2	59.0	44.5
5-6 AM	351	0.0	1500	351	0	0.52	0	70.2	58.7	44.1
6-7 AM	601	0.0	1500	601	0	0.54	0	70.0	58.1	43.1
7-8 AM	1141	0.0	1499	1141	0	0.69	0	69.3	55.1	39.0
8-9 AM	1645	0.0	OFF	1645	0	0.00	0	68.7	68.7	68.7
9-10 AM	2051	0.0	OFF	2051	0	0.00	0	68.2	68.2	68.2
10-11 AM	2606	0.0	OFF	2606	0	0.00	0	67.5	67.5	67.5
11AM-NOON	2847	0.0	OFF	2847	0	0.00	0	67.2	67.2	67.2
NOON-1PM	2882	0.0	OFF	2882	0	0.00	0	67.1	67.1	67.1
1-2 PM	2773	0.0	OFF	2773	0	0.00	0	67.3	67.3	67.3
2-3 PM	2612	0.0	OFF	2612	0	0.00	0	67.5	67.5	67.5
3-4 PM	2513	0.0	OFF	2513	0	0.00	0	67.6	67.6	67.6
4-5 PM	2483	0.0	OFF	2483	0	0.00	0	67.6	67.6	67.6
5-6 PM	2317	0.0	OFF	2317	0	0.00	0	67.9	67.9	67.9
6-7 PM	2028	0.0	1499	1894	134	10.12+	271	68.2	14.5	30.8
7-8 PM	1471	0.0	1499	1429	42	15.53+	379	68.9	10.2	30.8
8-9 PM	1118	0.0	1499	1118	0	4.57	152	69.4	25.6	35.6
9-10 PM	915	0.0	1500	915	0	0.58	0	69.6	57.2	42.0
10-11 PM	734	0.0	1500	734	0	0.56	0	69.8	57.7	42.6
11PM-MID	555	0.0	1500	555	0	0.54	0	70.0	58.2	43.3

"OFF" INDICATES NO ROAD WORK (ALL LANES OPEN TO TRAFFIC)

+ INDICATES QUEUEING EXCEEDS USER-SPECIFIED MAXIMUM LIMIT

----- SITE BREAKDOWN DELAYS -----	
BREAKDOWN DURATION (MINS)	0
RANGE OF QUEUE DELAY - MIN (VEH-H) MAX	0.0
AV BREAKDOWNS PER DAY	0.00
AV QUEUE DELAY/DAY (VEH-H)	0.0
AV TOTAL DELAY/DAY (VEH-H)	0.0

----- SITE ACCIDENT DELAYS -----	
BREAKDOWN DURATION (MINS)	0
RANGE OF QUEUE DELAY - MIN (VEH-H) MAX	0
AV BREAKDOWNS PER DAY	0
AV QUEUE DELAY/DAY (VEH-H)	0
AV TOTAL DELAY/DAY (VEH-H)	0

AVERAGE ACCIDENT NUMBERS (PIA/DAY)	
MAIN ROUTE WITHOUT WORKS	0.0172
MAIN ROUTE WITH WORKS	0.0164
'DIVERSION'	0.0002

PIA: Personal Injury Accidents

ECONOMIC IMPACT ON ROAD USERS	
ROAD USER COSTS PER DAY	\$14,361
CONGESTED HOURS PER DAY*	2

*Delays Exceeding User-Specified Maximum

**USH 41: STH 125 TO USH 10 (WINNEBAGO AND OUTAGAMIE COUNTIES)
 NIGHTTIME 2 LANE CLOSURE
 NO DIVERSION ROUTE (MAX QUEUE METHOD)**

OCTOBER

Analyzed for 2009
 Construction Season

GRAPHICAL REPRESENTATION OF TRAFFIC MODEL INPUT AND OUTPUT
SATURDAY NORTHBOUND DIRECTION

