

USH 41: STH 125 TO USH 10 (WINNEBAGO AND OUTAGAMIE COUNTIES) NIGHTTIME 2 LANE CLOSURE NO DIVERSION ROUTE (MAX QUEUE METHOD)	OCTOBER
	Analyzed for 2009 Construction Season

SUMMARY OF TRAFFIC MODEL OUTPUT	
FRIDAY	SOUTHBOUND DIRECTION

TIME OF DAY	FLOWS AND CAPACITY IN VEH/HR						AVERAGE SPEEDS IN MPH			
	MAIN ROUTE		SITE CAPA CITY	FLOW		AV.DEL PER VEH (MINS)	AVERAGE QUEUE (VEH)	MAIN ROUTE		SITE
	DEMAND FLOW	PCT HEAVY		MAIN ROUTE	'DIVER TED'			WITHOUT WORK ZONE	WITH WORK ZONE	
MID-1 AM	326	0.0	1500	326	0	0.51	0	70.2	58.8	44.2
1-2 AM	207	0.0	1500	207	0	0.50	0	70.2	59.1	44.6
2-3 AM	212	0.0	1500	212	0	0.50	0	70.2	59.1	44.6
3-4 AM	187	0.0	1500	187	0	0.50	0	70.2	59.1	44.7
4-5 AM	406	0.0	1500	406	0	0.52	0	70.2	58.6	43.8
5-6 AM	1085	0.0	OFF	1085	0	0.00	0	69.4	69.4	69.4
6-7 AM	2067	0.0	OFF	2067	0	0.00	0	68.2	68.2	68.2
7-8 AM	3140	0.0	OFF	3140	0	0.00	0	66.8	66.8	66.8
8-9 AM	2401	0.0	OFF	2401	0	0.00	0	67.8	67.8	67.8
9-10 AM	2053	0.0	OFF	2053	0	0.00	0	68.2	68.2	68.2
10-11 AM	2324	0.0	OFF	2324	0	0.00	0	67.9	67.9	67.9
11AM-NOON	2708	0.0	OFF	2708	0	0.00	0	67.4	67.4	67.4
NOON-1PM	3032	0.0	OFF	3032	0	0.00	0	66.9	66.9	66.9
1-2 PM	3477	0.0	OFF	3477	0	0.00	0	66.4	66.4	66.4
2-3 PM	3464	0.0	OFF	3464	0	0.00	0	66.4	66.4	66.4
3-4 PM	3718	0.0	OFF	3718	0	0.00	0	65.5	65.5	65.5
4-5 PM	4098	0.0	OFF	4098	0	0.00	0	62.8	62.8	62.8
5-6 PM	3671	0.0	OFF	3671	0	0.00	0	65.8	65.8	65.8
6-7 PM	2632	0.0	OFF	2632	0	0.00	0	67.4	67.4	67.4
7-8 PM	1974	0.0	1499	1940	34	9.51+	257	68.3	15.2	30.8
8-9 PM	1820	0.0	1500	1483	337	16.29+	398	68.5	9.7	30.8
9-10 PM	1633	0.0	1499	1460	172	16.20+	395	68.7	9.8	30.8
10-11 PM	1053	0.0	1499	1053	0	5.48	194	69.4	22.8	36.1
11PM-MID	678	0.0	1500	678	0	0.55	0	69.9	57.9	42.8

"OFF" INDICATES NO ROAD WORK (ALL LANES OPEN TO TRAFFIC)

+ INDICATES QUEUEING EXCEEDS USER-SPECIFIED MAXIMUM LIMIT

----- SITE BREAKDOWN DELAYS -----	
BREAKDOWN DURATION (MINS)	0
RANGE OF QUEUE DELAY - MIN (VEH-H) MAX	0.0
AV BREAKDOWNS PER DAY	0.00
AV QUEUE DELAY/DAY (VEH-H)	0.0
AV TOTAL DELAY/DAY (VEH-H)	0.0

----- SITE ACCIDENT DELAYS -----	
BREAKDOWN DURATION (MINS)	0
RANGE OF QUEUE DELAY - MIN (VEH-H) MAX	0
AV BREAKDOWNS PER DAY	0
AV QUEUE DELAY/DAY (VEH-H)	0
AV TOTAL DELAY/DAY (VEH-H)	0

AVERAGE ACCIDENT NUMBERS (PIA/DAY)	
MAIN ROUTE WITHOUT WORKS	0.0239
MAIN ROUTE WITH WORKS	0.0231
'DIVERSION'	0.0006
PIA: Personal Injury Accidents	
IMPACTS ON ROAD USERS	
ROAD USER COSTS PER DAY	\$20,666
CONGESTED HOURS PER DAY*	3

*Delays Exceeding User-Specified Maximum

**USH 41: STH 125 TO USH 10 (WINNEBAGO AND OUTAGAMIE COUNTIES)
 NIGHTTIME 2 LANE CLOSURE
 NO DIVERSION ROUTE (MAX QUEUE METHOD)**

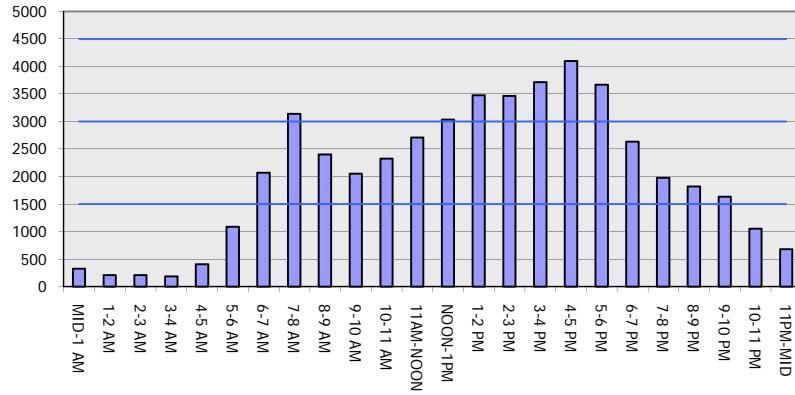
OCTOBER

Analyzed for 2009
 Construction Season

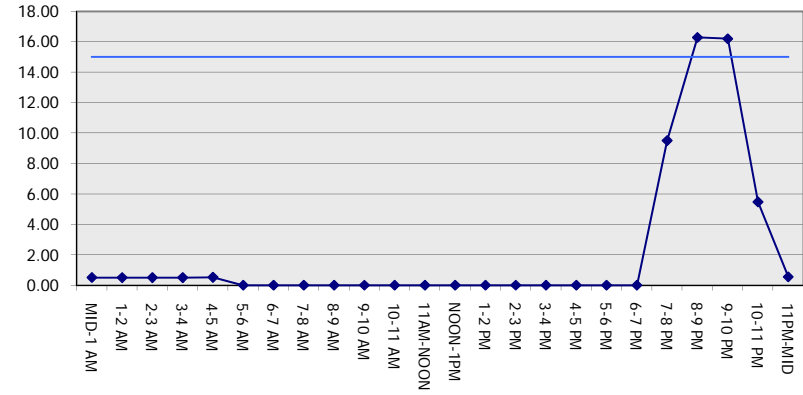
GRAPHICAL REPRESENTATION OF TRAFFIC MODEL INPUT AND OUTPUT

FRIDAY SOUTHBOUND DIRECTION

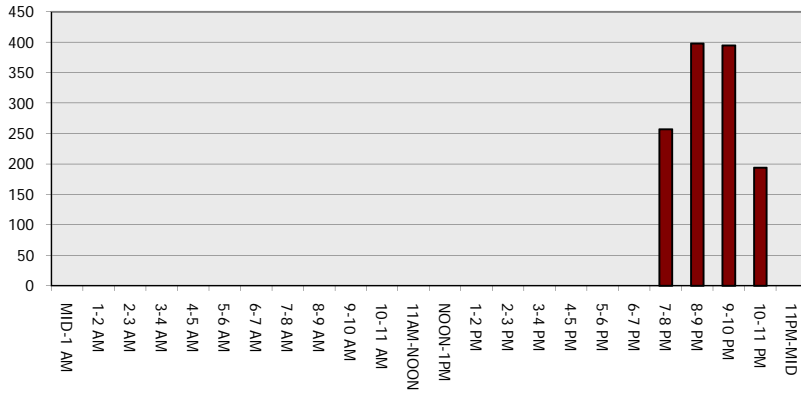
Main Route - Traffic Demand (Vehicles Per Hour)



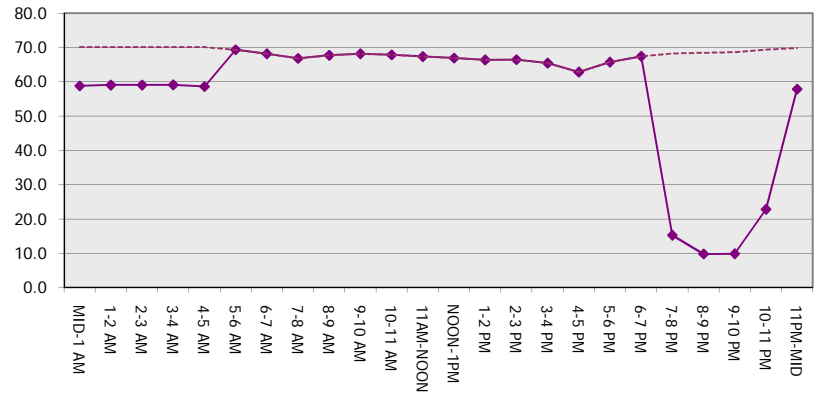
Main Route Average Delay Per Vehicle (Minutes)



Main Route - Average Queue Length (Vehicles)



Main Route - Average Speed (MPH)



USH 41: STH 125 TO USH 10 (WINNEBAGO AND OUTAGAMIE COUNTIES) NIGHTTIME 2 LANE CLOSURE NO DIVERSION ROUTE (MAX QUEUE METHOD)	OCTOBER
	Analyzed for 2009 Construction Season

SUMMARY OF TRAFFIC MODEL OUTPUT

FRIDAY NORTHBOUND DIRECTION

TIME OF DAY	FLOWS AND CAPACITY IN VEH/HR						AVERAGE SPEEDS IN MPH			
	MAIN ROUTE		SITE CAPA CITY	FLOW		AV.DEL PER VEH (MINS)	AVERAGE QUEUE (VEH)	MAIN ROUTE		SITE
	DEMAND FLOW	PCT HEAVY		MAIN ROUTE	'DIVER TED'			WITHOUT WORK ZONE	WITH WORK ZONE	
MID-1 AM	257	0.0	1500	257	0	0.50	0	70.2	58.9	44.5
1-2 AM	209	0.0	1500	209	0	0.50	0	70.2	59.1	44.6
2-3 AM	199	0.0	1500	199	0	0.50	0	70.2	59.1	44.7
3-4 AM	216	0.0	1500	216	0	0.50	0	70.2	59.1	44.6
4-5 AM	457	0.0	1500	457	0	0.53	0	70.2	58.5	43.7
5-6 AM	897	0.0	OFF	897	0	0.00	0	69.6	69.6	69.6
6-7 AM	1885	0.0	OFF	1885	0	0.00	0	68.4	68.4	68.4
7-8 AM	3268	0.0	OFF	3268	0	0.00	0	66.7	66.7	66.7
8-9 AM	2681	0.0	OFF	2681	0	0.00	0	67.4	67.4	67.4
9-10 AM	2435	0.0	OFF	2435	0	0.00	0	67.7	67.7	67.7
10-11 AM	2705	0.0	OFF	2705	0	0.00	0	67.4	67.4	67.4
11AM-NOON	3063	0.0	OFF	3063	0	0.00	0	66.9	66.9	66.9
NOON-1PM	3098	0.0	OFF	3098	0	0.00	0	66.9	66.9	66.9
1-2 PM	3164	0.0	OFF	3164	0	0.00	0	66.8	66.8	66.8
2-3 PM	3434	0.0	OFF	3434	0	0.00	0	66.4	66.4	66.4
3-4 PM	3923	0.0	OFF	3923	0	0.00	0	64.0	64.0	64.0
4-5 PM	4315	0.0	OFF	4315	0	0.00	0	61.4	61.4	61.4
5-6 PM	3892	0.0	OFF	3892	0	0.00	0	64.3	64.3	64.3
6-7 PM	3090	0.0	OFF	3090	0	0.00	0	66.9	66.9	66.9
7-8 PM	1943	0.0	1499	1919	25	10.33+	273	68.3	14.2	30.8
8-9 PM	1329	0.0	1499	1311	18	13.96+	343	69.1	11.2	30.8
9-10 PM	1115	0.0	1499	1115	0	2.41	78	69.4	36.5	37.6
10-11 PM	872	0.0	1500	872	0	0.57	0	69.7	57.3	42.1
11PM-MID	594	0.0	1500	594	0	0.54	0	70.0	58.1	43.2

"OFF" INDICATES NO ROAD WORK (ALL LANES OPEN TO TRAFFIC)

+ INDICATES QUEUEING EXCEEDS USER-SPECIFIED MAXIMUM LIMIT

----- SITE BREAKDOWN DELAYS -----	
BREAKDOWN DURATION (MINS)	0
RANGE OF QUEUE DELAY - MIN (VEH-H) MAX	0.0
AV BREAKDOWNS PER DAY	0.00
AV QUEUE DELAY/DAY (VEH-H)	0.0
AV TOTAL DELAY/DAY (VEH-H)	0.0

----- SITE ACCIDENT DELAYS -----	
BREAKDOWN DURATION (MINS)	0
RANGE OF QUEUE DELAY - MIN (VEH-H) MAX	0
AV BREAKDOWNS PER DAY	0
AV QUEUE DELAY/DAY (VEH-H)	0
AV TOTAL DELAY/DAY (VEH-H)	0

AVERAGE ACCIDENT NUMBERS (PIA/DAY)	
MAIN ROUTE WITHOUT WORKS	0.0242
MAIN ROUTE WITH WORKS	0.0237
'DIVERSION'	0.0000

PIA: Personal Injury Accidents

ECONOMIC IMPACT ON ROAD USERS	
ROAD USER COSTS PER DAY	\$10,829
CONGESTED HOURS PER DAY*	2

*Delays Exceeding User-Specified Maximum

**USH 41: STH 125 TO USH 10 (WINNEBAGO AND OUTAGAMIE COUNTIES)
 NIGHTTIME 2 LANE CLOSURE
 NO DIVERSION ROUTE (MAX QUEUE METHOD)**

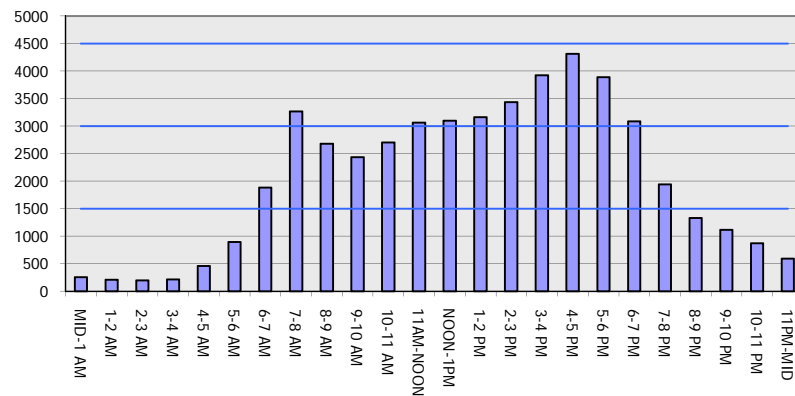
OCTOBER

Analyzed for 2009
 Construction Season

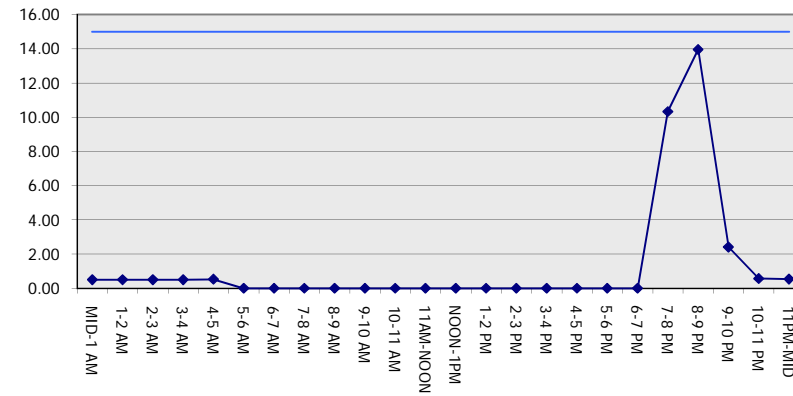
GRAPHICAL REPRESENTATION OF TRAFFIC MODEL INPUT AND OUTPUT

FRIDAY NORTHBOUND DIRECTION

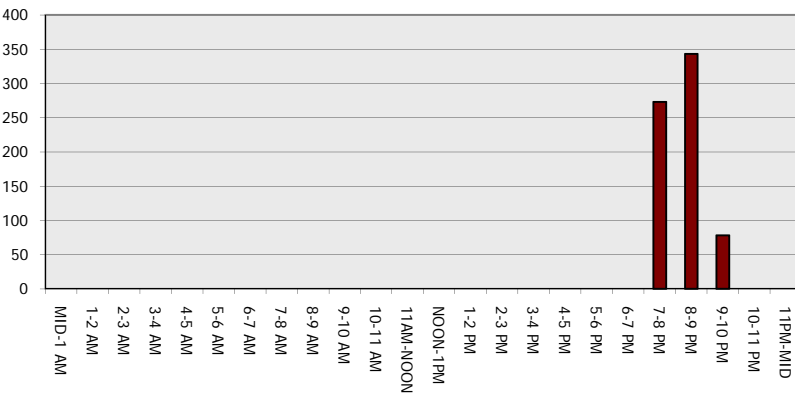
Main Route - Traffic Demand (Vehicles Per Hour)



Main Route Average Delay Per Vehicle (Minutes)



Main Route - Average Queue Length (Vehicles)



Main Route - Average Speed (MPH)

