

<b>STH 441: USH 41 TO RACINE ST (WINNEBAGO COUNTY)</b> <b>NIGHTTIME CLOSURE</b> <b>DIVERSION ROUTE: PROSPECT AVENUE - STH 47</b>	<b>OCTOBER</b>
	Analyzed for 2009 Construction Season

**SUMMARY OF TRAFFIC MODEL OUTPUT**

SUNDAY WESTBOUND DIRECTION

TIME OF DAY	FLOWS AND CAPACITY IN VEH/HR								AVERAGE SPEEDS IN MPH						
	MAIN ROUTE		ALTERNATE ROUTE		SITE CAPA CITY	FLOW MAIN ROUTE	FLOW DIVER -TING	TOTAL DIVN FLOW	AV.DEL PER VEH (MINS)	AVERAGE QUEUE (VEH)	MAIN ROUTE		ALTERNATE ROUTE		
	DEMAND FLOW	PCT HEAVY	NORMAL FLOW	PCT HEAVY							WITHOUT WORK ZN	WITH WORK ZN	SITE	WITHOUT WORK ZN	WITH WORK ZN
MID-1 AM	330	0.0	101	0.0	1500	330	0	101	0.45	0	65.8	46.5	44.2	24.1	24.1
1-2 AM	208	0.0	64	0.0	1500	208	0	64	0.44	0	66.0	46.9	44.6	24.3	24.3
2-3 AM	211	0.0	65	0.0	1500	211	0	65	0.44	0	66.0	46.9	44.6	24.3	24.3
3-4 AM	128	0.0	39	0.0	1500	128	0	39	0.43	0	66.1	47.3	45.0	24.5	24.5
4-5 AM	145	0.0	44	0.0	1500	145	0	44	0.44	0	66.1	47.2	44.9	24.5	24.5
5-6 AM	261	0.0	80	0.0	1500	261	0	80	0.45	0	65.9	46.7	44.5	24.2	24.2
6-7 AM	349	0.0	107	0.0	1500	349	0	107	0.46	0	65.8	46.4	44.1	24.0	24.0
7-8 AM	443	0.0	136	0.0	1500	443	0	136	0.47	0	65.6	46.0	43.7	23.8	23.8
8-9 AM	719	0.0	220	0.0	1500	719	0	220	0.49	0	65.0	45.0	42.7	23.2	23.2
9-10 AM	1050	0.0	322	0.0	OFF	1050	0	322	0.00	0	64.4	64.4	64.4	22.4	22.4
10-11 AM	1447	0.0	444	0.0	OFF	1447	0	444	0.00	0	63.7	63.7	63.7	21.4	21.4
11A-NOON	1530	0.0	469	0.0	OFF	1530	0	469	0.00	0	63.5	63.5	63.5	21.2	21.2
NOON-1PM	1684	0.0	517	0.0	OFF	1684	0	517	0.00	0	63.2	63.2	63.2	20.9	20.9
1-2 PM	1455	0.0	446	0.0	OFF	1455	0	446	0.00	0	63.7	63.7	63.7	21.4	21.4
2-3 PM	1414	0.0	433	0.0	OFF	1414	0	433	0.00	0	63.8	63.8	63.8	21.5	21.5
3-4 PM	1446	0.0	444	0.0	OFF	1446	0	444	0.00	0	63.7	63.7	63.7	21.4	21.4
4-5 PM	1619	0.0	496	0.0	OFF	1619	0	496	0.00	0	63.3	63.3	63.3	21.1	21.1
5-6 PM	1513	0.0	464	0.0	OFF	1513	0	464	0.00	0	63.6	63.6	63.6	21.3	21.3
6-7 PM	1234	0.0	378	0.0	OFF	1234	0	378	0.00	0	64.1	64.1	64.1	21.9	21.9
7-8 PM	874	0.0	268	0.0	1500	874	0	268	0.51	0	64.8	44.5	42.1	22.8	22.8
8-9 PM	655	0.0	201	0.0	1500	655	0	201	0.49	0	65.1	45.3	42.9	23.3	23.3
9-10 PM	543	0.0	167	0.0	1500	543	0	167	0.48	0	65.4	45.6	43.3	23.5	23.5
10-11 PM	382	0.0	117	0.0	1500	382	0	117	0.46	0	65.7	46.3	44.0	24.0	24.0
11PM-MID	175	0.0	54	0.0	1500	175	0	54	0.44	0	66.1	47.1	44.8	24.4	24.4

"OFF" INDICATES NO ROAD WORK (ALL LANES OPEN TO TRAFFIC)

*----- SITE BREAKDOWN DELAYS -----*	
BREAKDOWN DURATION (MINS)	0
RANGE OF QUEUE DELAY - MIN	0.0
(VEH-H) MAX	0.0
RANGE OF DIVN DELAY - MIN	0.0
(VEH-H) MAX	0.0
AV BREAKDOWNS PER DAY	0.00
AV QUEUE DELAY/DAY (VEH-H)	0.0
AV DIVN DELAY/DAY (VEH-H)	0.0
AV TOTAL DELAY/DAY (VEH-H)	0.0

*----- SITE ACCIDENT DELAYS -----*	
ACCIDENT DURATION (MINS)	0
RANGE OF QUEUE DELAY - MIN	0.0
(VEH-H) MAX	0.0
RANGE OF DIVN DELAY - MIN	0.0
(VEH-H) MAX	0.0
AV ACCIDENTS PER DAY	0.00
AV QUEUE DELAY/DAY (VEH-H)	0.0
AV DIVN DELAY/DAY (VEH-H)	0.0
AV TOTAL DELAY/DAY (VEH-H)	0.0

AVERAGE ACCIDENT NUMBERS (PIA/DAY)	
MAIN ROUTE WITHOUT WORKS	0.0038
MAIN ROUTE WITH WORKS	0.0034
DIVERSION	0.0485

PIA: Personal Injury Accidents

IMPACTS ON ROAD USERS	
ROAD USER COSTS PER DAY ( DOLLARS)	\$624
CONGESTED HOURS PER DAY*	0

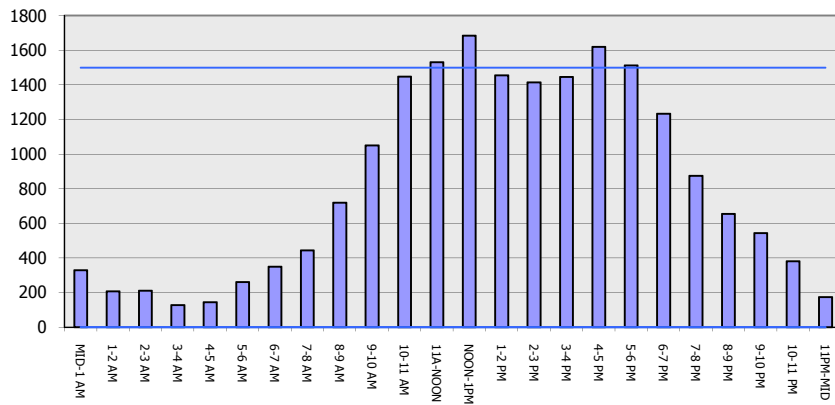
\*Delays Exceeding 15 Minutes

**STH 441: USH 41 TO RACINE ST (WINNEBAGO COUNTY)**  
**NIGHTTIME CLOSURE**  
**DIVERSION ROUTE: PROSPECT AVENUE - STH 47**

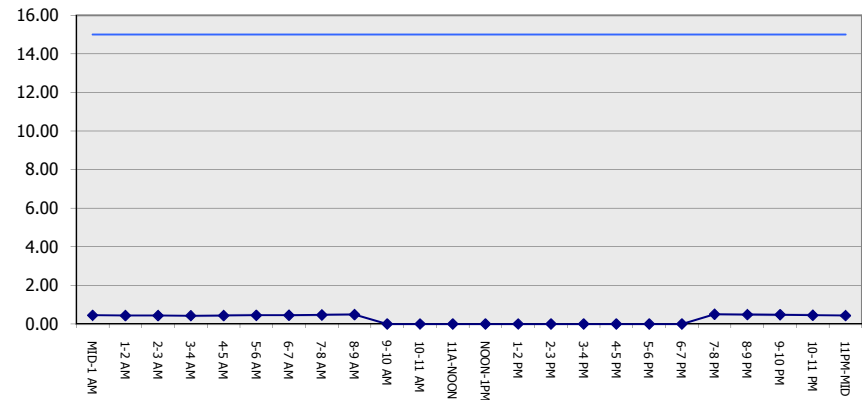
**OCTOBER**  
 Analyzed for 2009  
 Construction Season

**GRAPHICAL REPRESENTATION OF TRAFFIC MODEL INPUT AND OUTPUT**  
**SUNDAY WESTBOUND DIRECTION**

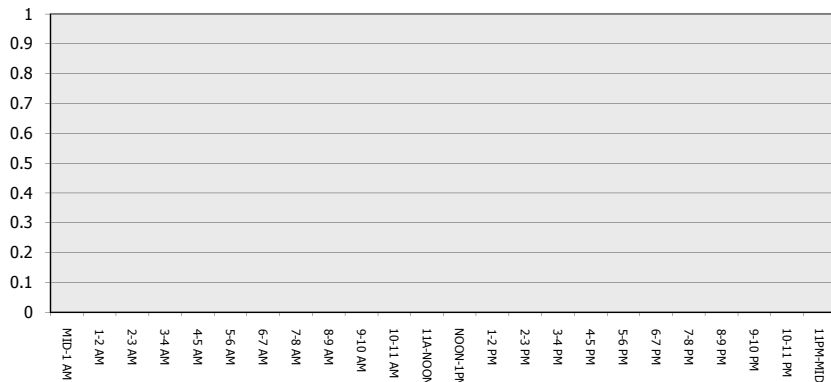
**Main Route - Traffic Demand (Vehicles Per Hour)**



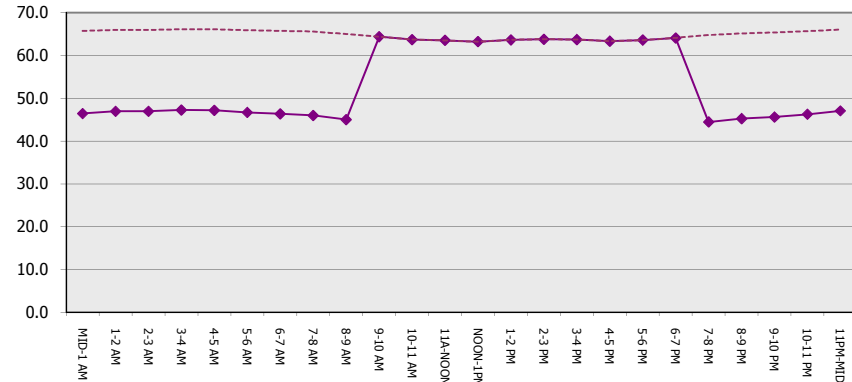
**Main Route Average Delay Per Vehicle (Minutes)**



**Main Route - Average Queue Length (Vehicles)**



**Main Route - Average Speed (MPH)**



<b>STH 441: USH 41 TO RACINE ST (WINNEBAGO COUNTY) NIGHTTIME CLOSURE DIVERSION ROUTE: PROSPECT AVENUE - STH 47</b>	<b>OCTOBER</b>
	Analyzed for 2009 Construction Season

<b>SUMMARY OF TRAFFIC MODEL OUTPUT</b>	
SUNDAY	EASTBOUND DIRECTION

TIME OF DAY	FLOWS AND CAPACITY IN VEH/HR								AVERAGE SPEEDS IN MPH						
	MAIN		DIVERSION		SITE CAPA CITY	FLOW MAIN ROUTE	FLOW DIVER -TING	TOTAL DIVN FLOW	AV.DEL PER VEH (MINS)	AVERAGE QUEUE (VEH)	MAIN ROUTE		SITE	ALTERNATE ROUTE	
	DEMAND FLOW	PCT HEAVY	NORMAL FLOW	PCT HEAVY							WITHOUT WORK ZN	WITH WORK ZN		WITHOUT WORK ZN	WITH WORK ZN
MID-1 AM	433	0.0	133	0.0	1500	433	0	133	0.46	0	65.6	46.1	43.8	23.8	23.8
1-2 AM	253	0.0	77	0.0	1500	253	0	77	0.45	0	65.9	46.8	44.5	24.2	24.2
2-3 AM	273	0.0	83	0.0	1500	273	0	83	0.45	0	65.9	46.7	44.4	24.2	24.2
3-4 AM	152	0.0	46	0.0	1500	152	0	46	0.44	0	66.1	47.1	44.9	24.5	24.5
4-5 AM	125	0.0	38	0.0	1500	125	0	38	0.43	0	66.1	47.3	45.0	24.5	24.5
5-6 AM	257	0.0	79	0.0	1500	257	0	79	0.45	0	65.9	46.8	44.5	24.2	24.2
6-7 AM	410	0.0	126	0.0	1500	410	0	126	0.46	0	65.6	46.1	43.8	23.8	23.8
7-8 AM	460	0.0	141	0.0	1500	460	0	141	0.47	0	65.5	46.0	43.7	23.8	23.8
8-9 AM	811	0.0	248	0.0	1500	811	0	248	0.50	0	64.9	44.7	42.4	22.9	22.9
9-10 AM	1207	0.0	370	0.0	OFF	1207	0	370	0.00	0	64.1	64.1	64.1	22.0	22.0
10-11 AM	1527	0.0	468	0.0	OFF	1527	0	468	0.00	0	63.5	63.5	63.5	21.2	21.2
11A-NOON	1861	0.0	570	0.0	OFF	1861	0	570	0.00	0	62.9	62.9	62.9	20.5	20.5
NOON-1PM	1839	0.0	564	0.0	OFF	1839	0	564	0.00	0	63.0	63.0	63.0	20.5	20.5
1-2 PM	1751	0.0	537	0.0	OFF	1751	0	537	0.00	0	63.1	63.1	63.1	20.7	20.7
2-3 PM	1864	0.0	571	0.0	OFF	1864	0	571	0.00	0	62.9	62.9	62.9	20.4	20.4
3-4 PM	1942	0.0	595	0.0	OFF	1942	0	595	0.00	0	62.8	62.8	62.8	20.2	20.2
4-5 PM	2146	0.0	658	0.0	OFF	2146	0	658	0.00	0	62.4	62.4	62.4	19.8	19.8
5-6 PM	2126	0.0	652	0.0	OFF	2126	0	652	0.00	0	62.4	62.4	62.4	19.9	19.9
6-7 PM	1827	0.0	560	0.0	OFF	1827	0	560	0.00	0	63.0	63.0	63.0	20.6	20.6
7-8 PM	1486	0.0	455	0.0	1499	1486	0	455	1.61	18	63.6	26.3	31.7	21.4	21.4
8-9 PM	1036	0.0	317	0.0	1500	1036	0	317	0.52	0	64.5	43.9	41.5	22.4	22.4
9-10 PM	765	0.0	235	0.0	1500	765	0	235	0.50	0	65.0	44.8	42.5	23.0	23.0
10-11 PM	585	0.0	179	0.0	1500	585	0	179	0.48	0	65.3	45.5	43.2	23.5	23.5
11PM-MID	316	0.0	97	0.0	1500	316	0	97	0.45	0	65.8	46.5	44.2	24.1	24.1

**"OFF" INDICATES NO ROAD WORK (ALL LANES OPEN TO TRAFFIC)**

*----- SITE BREAKDOWN DELAYS -----*	
BREAKDOWN DURATION (MINS)	0
RANGE OF QUEUE DELAY - MIN	0.0
(VEH-H) MAX	0.0
RANGE OF DIVN DELAY - MIN	0.0
(VEH-H) MAX	0.0
AV BREAKDOWNS PER DAY	0.00
AV QUEUE DELAY/DAY (VEH-H)	0.0
AV DIVN DELAY/DAY (VEH-H)	0.0
AV TOTAL DELAY/DAY (VEH-H)	0.0

*----- SITE ACCIDENT DELAYS -----*	
ACCIDENT DURATION (MINS)	0
RANGE OF QUEUE DELAY - MIN	0.0
(VEH-H) MAX	0.0
RANGE OF DIVN DELAY - MIN	0.0
(VEH-H) MAX	0.0
AV ACCIDENTS PER DAY	0.00
AV QUEUE DELAY/DAY (VEH-H)	0.0
AV DIVN DELAY/DAY (VEH-H)	0.0
AV TOTAL DELAY/DAY (VEH-H)	0.0

AVERAGE ACCIDENT NUMBERS (PIA/DAY)	
MAIN ROUTE WITHOUT WORKS	0.0049
MAIN ROUTE WITH WORKS	0.0044
DIVERSION	0.0623

PIA: Personal Injury Accidents

IMPACTS ON ROAD USERS	
ROAD USER COSTS PER DAY ( DOLLARS)	\$1,267
CONGESTED HOURS PER DAY*	0

\*Delays Exceeding 15 Minutes

**STH 441: USH 41 TO RACINE ST (WINNEBAGO COUNTY)**  
**NIGHTTIME CLOSURE**  
**DIVERSION ROUTE: PROSPECT AVENUE - STH 47**

**OCTOBER**  
 Analyzed for 2009  
 Construction Season

**GRAPHICAL REPRESENTATION OF TRAFFIC MODEL INPUT AND OUTPUT**  
**SUNDAY EASTBOUND DIRECTION**

