

**STH 441: USH 41 TO RACINE ST (WINNEBAGO COUNTY)
NIGHTTIME CLOSURE
DIVERSION ROUTE: PROSPECT AVENUE - STH 47**

AUGUST
Analyzed for 2009
Construction Season

SUMMARY OF TRAFFIC MODEL OUTPUT
SUNDAY WESTBOUND DIRECTION

TIME OF DAY	FLOWS AND CAPACITY IN VEH/HR								AVERAGE SPEEDS IN MPH						
	MAIN ROUTE		ALTERNATE ROUTE		SITE CAPA CITY	FLOW MAIN ROUTE	FLOW DIVER -TING	TOTAL DIVN FLOW	AV.DEL PER VEH (MINS)	AVERAGE QUEUE (VEH)	MAIN ROUTE		ALTERNATE ROUTE		
	DEMAND FLOW	PCT HEAVY	NORMAL FLOW	PCT HEAVY							WITHOUT WORK ZN	WITH WORK ZN	SITE	WITHOUT WORK ZN	WITH WORK ZN
MID-1 AM	348	0.0	107	0.0	1500	348	0	107	0.46	0	65.8	46.4	44.1	24.0	24.0
1-2 AM	228	0.0	70	0.0	1500	228	0	70	0.44	0	66.0	46.8	44.6	24.3	24.3
2-3 AM	191	0.0	59	0.0	1500	191	0	59	0.44	0	66.0	47.0	44.7	24.4	24.4
3-4 AM	138	0.0	42	0.0	1500	138	0	42	0.44	0	66.1	47.2	45.0	24.5	24.5
4-5 AM	144	0.0	44	0.0	1500	144	0	44	0.44	0	66.1	47.2	44.9	24.5	24.5
5-6 AM	292	0.0	90	0.0	1500	292	0	90	0.45	0	65.8	46.6	44.3	24.2	24.2
6-7 AM	393	0.0	120	0.0	1500	393	0	120	0.46	0	65.6	46.2	43.9	23.9	23.9
7-8 AM	436	0.0	134	0.0	1500	436	0	134	0.46	0	65.6	46.1	43.8	23.8	23.8
8-9 AM	638	0.0	196	0.0	1500	638	0	196	0.48	0	65.2	45.3	43.0	23.3	23.3
9-10 AM	934	0.0	286	0.0	OFF	934	0	286	0.00	0	64.6	64.6	64.6	22.7	22.7
10-11 AM	1436	0.0	441	0.0	OFF	1436	0	441	0.00	0	63.7	63.7	63.7	21.5	21.5
11A-NOON	1598	0.0	490	0.0	OFF	1598	0	490	0.00	0	63.4	63.4	63.4	21.1	21.1
NOON-1PM	1747	0.0	535	0.0	OFF	1747	0	535	0.00	0	63.2	63.2	63.2	20.7	20.7
1-2 PM	1700	0.0	521	0.0	OFF	1700	0	521	0.00	0	63.2	63.2	63.2	20.9	20.9
2-3 PM	1667	0.0	511	0.0	OFF	1667	0	511	0.00	0	63.3	63.3	63.3	20.9	20.9
3-4 PM	1543	0.0	473	0.0	OFF	1543	0	473	0.00	0	63.5	63.5	63.5	21.2	21.2
4-5 PM	1384	0.0	424	0.0	OFF	1384	0	424	0.00	0	63.8	63.8	63.8	21.6	21.6
5-6 PM	1342	0.0	412	0.0	OFF	1342	0	412	0.00	0	63.9	63.9	63.9	21.7	21.7
6-7 PM	1194	0.0	366	0.0	OFF	1194	0	366	0.00	0	64.1	64.1	64.1	22.0	22.0
7-8 PM	889	0.0	273	0.0	1500	889	0	273	0.51	0	64.7	44.4	42.0	22.7	22.7
8-9 PM	746	0.0	229	0.0	1500	746	0	229	0.49	0	65.0	44.9	42.6	23.1	23.1
9-10 PM	710	0.0	218	0.0	1500	710	0	218	0.49	0	65.1	45.0	42.7	23.2	23.2
10-11 PM	510	0.0	156	0.0	1500	510	0	156	0.47	0	65.5	45.8	43.5	23.7	23.7
11PM-MID	444	0.0	136	0.0	1500	444	0	136	0.47	0	65.6	46.0	43.7	23.8	23.8

"OFF" INDICATES NO ROAD WORK (ALL LANES OPEN TO TRAFFIC)

----- SITE BREAKDOWN DELAYS -----	
BREAKDOWN DURATION (MINS)	0
RANGE OF QUEUE DELAY - MIN	0.0
(VEH-H) MAX	0.0
RANGE OF DIVN DELAY - MIN	0.0
(VEH-H) MAX	0.0
AV BREAKDOWNS PER DAY	0.00
AV QUEUE DELAY/DAY (VEH-H)	0.0
AV DIVN DELAY/DAY (VEH-H)	0.0
AV TOTAL DELAY/DAY (VEH-H)	0.0

----- SITE ACCIDENT DELAYS -----	
ACCIDENT DURATION (MINS)	0
RANGE OF QUEUE DELAY - MIN	0.0
(VEH-H) MAX	0.0
RANGE OF DIVN DELAY - MIN	0.0
(VEH-H) MAX	0.0
AV ACCIDENTS PER DAY	0.00
AV QUEUE DELAY/DAY (VEH-H)	0.0
AV DIVN DELAY/DAY (VEH-H)	0.0
AV TOTAL DELAY/DAY (VEH-H)	0.0

AVERAGE ACCIDENT NUMBERS (PIA/DAY)	
MAIN ROUTE WITHOUT WORKS	0.0039
MAIN ROUTE WITH WORKS	0.0035
DIVERSION	0.0506

PIA: Personal Injury Accidents

IMPACTS ON ROAD USERS	
ROAD USER COSTS PER DAY (DOLLARS)	\$793
CONGESTED HOURS PER DAY*	0

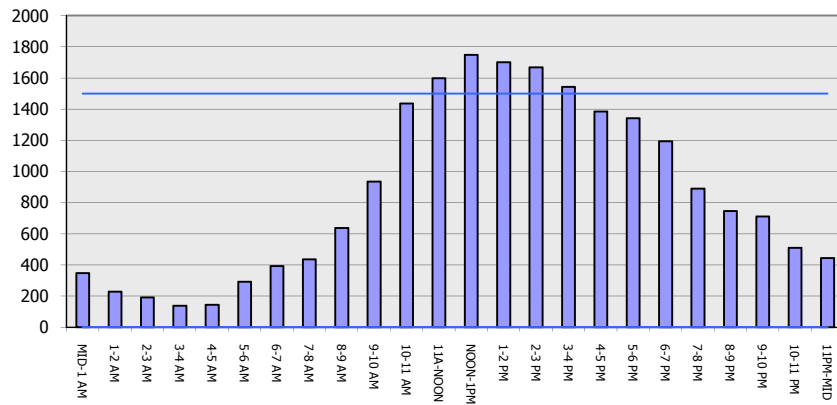
*Delays Exceeding 15 Minutes

STH 441: USH 41 TO RACINE ST (WINNEBAGO COUNTY)
NIGHTTIME CLOSURE
DIVERSION ROUTE: PROSPECT AVENUE - STH 47

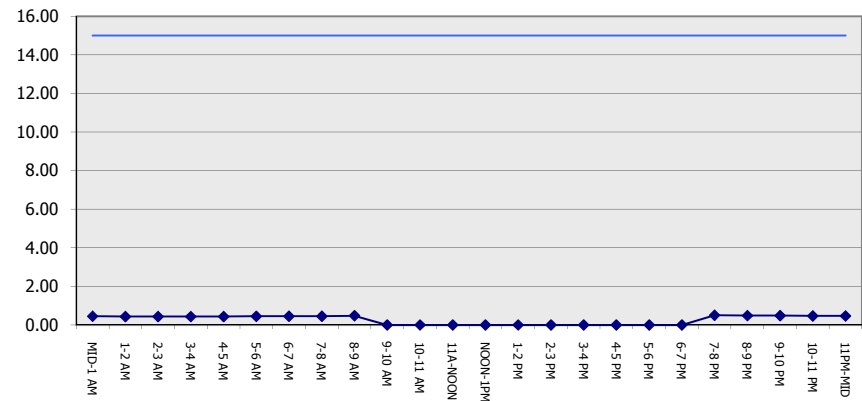
AUGUST
 Analyzed for 2009
 Construction Season

GRAPHICAL REPRESENTATION OF TRAFFIC MODEL INPUT AND OUTPUT
SUNDAY WESTBOUND DIRECTION

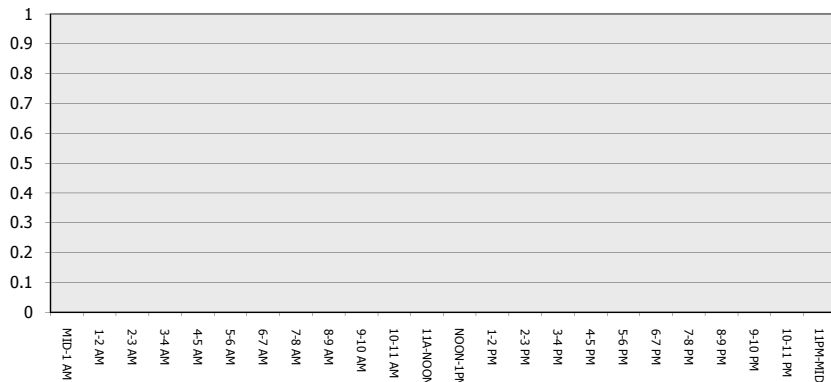
Main Route - Traffic Demand (Vehicles Per Hour)



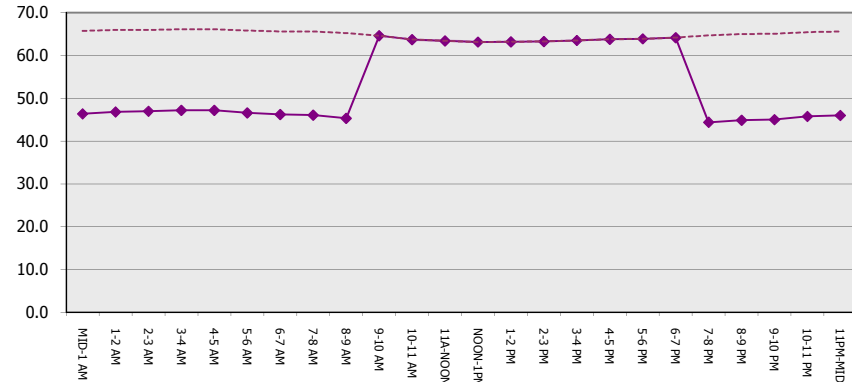
Main Route Average Delay Per Vehicle (Minutes)



Main Route - Average Queue Length (Vehicles)



Main Route - Average Speed (MPH)



STH 441: USH 41 TO RACINE ST (WINNEBAGO COUNTY) NIGHTTIME CLOSURE DIVERSION ROUTE: PROSPECT AVENUE - STH 47	AUGUST Analyzed for 2009 Construction Season
--	---

SUMMARY OF TRAFFIC MODEL OUTPUT
SUNDAY EASTBOUND DIRECTION

TIME OF DAY	FLOWS AND CAPACITY IN VEH/HR								AVERAGE SPEEDS IN MPH						
	MAIN		DIVERSION		SITE CAPA CITY	FLOW MAIN ROUTE	FLOW DIVER -TING	TOTAL DIVN FLOW	AV.DEL PER VEH (MINS)	AVERAGE QUEUE (VEH)	MAIN ROUTE		SITE	ALTERNATE ROUTE	
	DEMAND FLOW	PCT HEAVY	NORMAL FLOW	PCT HEAVY							WITHOUT WORK ZN	WITH WORK ZN		WITHOUT WORK ZN	WITH WORK ZN
MID-1 AM	478	0.0	146	0.0	1500	478	0	146	0.47	0	65.5	45.9	43.6	23.7	23.7
1-2 AM	295	0.0	91	0.0	1500	295	0	91	0.45	0	65.8	46.6	44.3	24.2	24.2
2-3 AM	221	0.0	68	0.0	1500	221	0	68	0.44	0	66.0	46.9	44.6	24.3	24.3
3-4 AM	152	0.0	46	0.0	1500	152	0	46	0.44	0	66.1	47.1	44.9	24.5	24.5
4-5 AM	123	0.0	38	0.0	1500	123	0	38	0.43	0	66.1	47.3	45.0	24.5	24.5
5-6 AM	219	0.0	67	0.0	1500	219	0	67	0.44	0	66.0	46.9	44.6	24.3	24.3
6-7 AM	452	0.0	139	0.0	1500	452	0	139	0.47	0	65.5	46.0	43.7	23.8	23.8
7-8 AM	364	0.0	111	0.0	1500	364	0	111	0.46	0	65.7	46.3	44.0	24.0	24.0
8-9 AM	644	0.0	198	0.0	1500	644	0	198	0.48	0	65.2	45.3	43.0	23.3	23.3
9-10 AM	993	0.0	305	0.0	OFF	993	0	305	0.00	0	64.5	64.5	64.5	22.5	22.5
10-11 AM	1437	0.0	441	0.0	OFF	1437	0	441	0.00	0	63.7	63.7	63.7	21.5	21.5
11A-NOON	1756	0.0	538	0.0	OFF	1756	0	538	0.00	0	63.1	63.1	63.1	20.7	20.7
NOON-1PM	1835	0.0	563	0.0	OFF	1835	0	563	0.00	0	63.0	63.0	63.0	20.5	20.5
1-2 PM	2073	0.0	635	0.0	OFF	2073	0	635	0.00	0	62.5	62.5	62.5	20.0	20.0
2-3 PM	2060	0.0	632	0.0	OFF	2060	0	632	0.00	0	62.5	62.5	62.5	20.0	20.0
3-4 PM	2269	0.0	696	0.0	OFF	2269	0	696	0.00	0	62.2	62.2	62.2	19.5	19.5
4-5 PM	2198	0.0	674	0.0	OFF	2198	0	674	0.00	0	62.3	62.3	62.3	19.7	19.7
5-6 PM	2162	0.0	663	0.0	OFF	2162	0	663	0.00	0	62.3	62.3	62.3	19.7	19.7
6-7 PM	2028	0.0	622	0.0	OFF	2028	0	622	0.00	0	62.6	62.6	62.6	20.1	20.1
7-8 PM	1623	0.0	497	0.0	1499	1623	0	497	3.87	82	63.3	15.8	30.8	21.1	21.3
8-9 PM	1360	0.0	417	0.0	1499	1360	0	417	3.07	71	63.8	18.6	32.4	21.7	21.9
9-10 PM	1043	0.0	320	0.0	1500	1043	0	320	0.52	0	64.5	43.8	41.5	22.4	22.4
10-11 PM	704	0.0	216	0.0	1500	704	0	216	0.49	0	65.1	45.1	42.7	23.2	23.2
11PM-MID	405	0.0	125	0.0	1500	405	0	125	0.46	0	65.6	46.2	43.8	23.9	23.9

"OFF" INDICATES NO ROAD WORK (ALL LANES OPEN TO TRAFFIC)

----- SITE BREAKDOWN DELAYS -----	
BREAKDOWN DURATION (MINS)	0
RANGE OF QUEUE DELAY - MIN	0.0
(VEH-H) MAX	0.0
RANGE OF DIVN DELAY - MIN	0.0
(VEH-H) MAX	0.0
AV BREAKDOWNS PER DAY	0.00
AV QUEUE DELAY/DAY (VEH-H)	0.0
AV DIVN DELAY/DAY (VEH-H)	0.0
AV TOTAL DELAY/DAY (VEH-H)	0.0

----- SITE ACCIDENT DELAYS -----	
ACCIDENT DURATION (MINS)	0
RANGE OF QUEUE DELAY - MIN	0.0
(VEH-H) MAX	0.0
RANGE OF DIVN DELAY - MIN	0.0
(VEH-H) MAX	0.0
AV ACCIDENTS PER DAY	0.00
AV QUEUE DELAY/DAY (VEH-H)	0.0
AV DIVN DELAY/DAY (VEH-H)	0.0
AV TOTAL DELAY/DAY (VEH-H)	0.0

AVERAGE ACCIDENT NUMBERS (PIA/DAY)	
MAIN ROUTE WITHOUT WORKS	0.0051
MAIN ROUTE WITH WORKS	0.0046
DIVERSION	0.0659

PIA: Personal Injury Accidents

IMPACTS ON ROAD USERS	
ROAD USER COSTS PER DAY (DOLLARS)	\$3,523
CONGESTED HOURS PER DAY*	0

*Delays Exceeding 15 Minutes

STH 441: USH 41 TO RACINE ST (WINNEBAGO COUNTY)
NIGHTTIME CLOSURE
DIVERSION ROUTE: PROSPECT AVENUE - STH 47

AUGUST
 Analyzed for 2009
 Construction Season

GRAPHICAL REPRESENTATION OF TRAFFIC MODEL INPUT AND OUTPUT
SUNDAY EASTBOUND DIRECTION

