

STH 441: USH 41 TO RACINE ST (WINNEBAGO COUNTY) NIGHTTIME CLOSURE DIVERSION ROUTE: PROSPECT AVENUE - STH 47	AUGUST
	Analyzed for 2009 Construction Season

SUMMARY OF TRAFFIC MODEL OUTPUT

SATURDAY WESTBOUND DIRECTION

TIME OF DAY	FLOWS AND CAPACITY IN VEH/HR							AVERAGE SPEEDS IN MPH							
	MAIN ROUTE		ALTERNATE ROUTE		SITE CAPA CITY	FLOW MAIN ROUTE	FLOW DIVER -TING	TOTAL DIVN FLOW	AV.DEL PER VEH (MINS)	AVERAGE QUEUE (VEH)	MAIN ROUTE		ALTERNATE ROUTE		
	DEMAND FLOW	PCT HEAVY	NORMAL FLOW	PCT HEAVY							WITHOUT WORK ZN	WITH WORK ZN	SITE	WITHOUT WORK ZN	WITH WORK ZN
MID-1 AM	404	0.0	124	0.0	1500	404	0	124	0.46	0	65.6	46.2	43.9	23.9	23.9
1-2 AM	215	0.0	66	0.0	1500	215	0	66	0.44	0	66.0	46.9	44.6	24.3	24.3
2-3 AM	179	0.0	55	0.0	1500	179	0	55	0.44	0	66.1	47.1	44.8	24.4	24.4
3-4 AM	168	0.0	51	0.0	1500	168	0	51	0.44	0	66.1	47.1	44.8	24.5	24.5
4-5 AM	286	0.0	87	0.0	1500	286	0	87	0.45	0	65.8	46.6	44.3	24.2	24.2
5-6 AM	499	0.0	153	0.0	1500	499	0	153	0.47	0	65.5	45.8	43.5	23.7	23.7
6-7 AM	673	0.0	206	0.0	1500	673	0	206	0.49	0	65.1	45.2	42.8	23.3	23.3
7-8 AM	998	0.0	306	0.0	1500	998	0	306	0.52	0	64.5	44.0	41.7	22.5	22.5
8-9 AM	1280	0.0	392	0.0	OFF	1280	0	392	0.00	0	64.0	64.0	64.0	21.9	21.9
9-10 AM	1590	0.0	488	0.0	OFF	1590	0	488	0.00	0	63.4	63.4	63.4	21.1	21.1
10-11 AM	1783	0.0	547	0.0	OFF	1783	0	547	0.00	0	63.1	63.1	63.1	20.6	20.6
11A-NOON	1745	0.0	535	0.0	OFF	1745	0	535	0.00	0	63.2	63.2	63.2	20.7	20.7
NOON-1PM	1731	0.0	530	0.0	OFF	1731	0	530	0.00	0	63.2	63.2	63.2	20.8	20.8
1-2 PM	1642	0.0	503	0.0	OFF	1642	0	503	0.00	0	63.3	63.3	63.3	21.0	21.0
2-3 PM	1631	0.0	500	0.0	OFF	1631	0	500	0.00	0	63.3	63.3	63.3	21.0	21.0
3-4 PM	1533	0.0	470	0.0	OFF	1533	0	470	0.00	0	63.5	63.5	63.5	21.2	21.2
4-5 PM	1391	0.0	426	0.0	OFF	1391	0	426	0.00	0	63.8	63.8	63.8	21.5	21.5
5-6 PM	1344	0.0	412	0.0	OFF	1344	0	412	0.00	0	63.9	63.9	63.9	21.7	21.7
6-7 PM	1122	0.0	344	0.0	1500	1122	0	344	0.54	0	64.3	43.5	41.1	22.2	22.2
7-8 PM	897	0.0	275	0.0	1500	897	0	275	0.51	0	64.7	44.4	42.0	22.7	22.7
8-9 PM	755	0.0	232	0.0	1500	755	0	232	0.50	0	65.0	44.9	42.5	23.0	23.0
9-10 PM	752	0.0	231	0.0	1500	752	0	231	0.50	0	65.0	44.9	42.5	23.1	23.1
10-11 PM	715	0.0	219	0.0	1500	715	0	219	0.49	0	65.1	45.0	42.7	23.2	23.2
11PM-MID	586	0.0	180	0.0	1500	586	0	180	0.48	0	65.3	45.5	43.2	23.5	23.5

"OFF" INDICATES NO ROAD WORK (ALL LANES OPEN TO TRAFFIC)

----- SITE BREAKDOWN DELAYS -----	
BREAKDOWN DURATION (MINS)	0
RANGE OF QUEUE DELAY - MIN	0.0
(VEH-H) MAX	0.0
RANGE OF DIVN DELAY - MIN	0.0
(VEH-H) MAX	0.0
AV BREAKDOWNS PER DAY	0.00
AV QUEUE DELAY/DAY (VEH-H)	0.0
AV DIVN DELAY/DAY (VEH-H)	0.0
AV TOTAL DELAY/DAY (VEH-H)	0.0

----- SITE ACCIDENT DELAYS -----	
ACCIDENT DURATION (MINS)	0
RANGE OF QUEUE DELAY - MIN	0.0
(VEH-H) MAX	0.0
RANGE OF DIVN DELAY - MIN	0.0
(VEH-H) MAX	0.0
AV ACCIDENTS PER DAY	0.00
AV QUEUE DELAY/DAY (VEH-H)	0.0
AV DIVN DELAY/DAY (VEH-H)	0.0
AV TOTAL DELAY/DAY (VEH-H)	0.0

AVERAGE ACCIDENT NUMBERS (PIA/DAY)	
MAIN ROUTE WITHOUT WORKS	0.0046
MAIN ROUTE WITH WORKS	0.0040
DIVERSION	0.0586

PIA: Personal Injury Accidents

IMPACTS ON ROAD USERS	
ROAD USER COSTS PER DAY (DOLLARS)	\$1,125
CONGESTED HOURS PER DAY*	0

*Delays Exceeding 15 Minutes

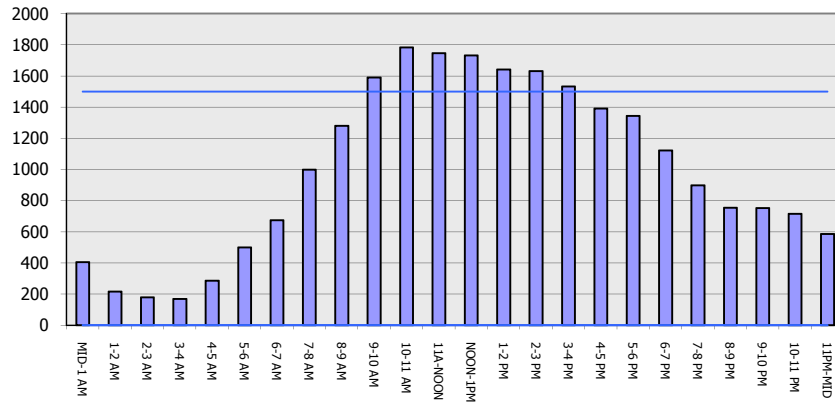
STH 441: USH 41 TO RACINE ST (WINNEBAGO COUNTY)
NIGHTTIME CLOSURE
DIVERSION ROUTE: PROSPECT AVENUE - STH 47

AUGUST
 Analyzed for 2009
 Construction Season

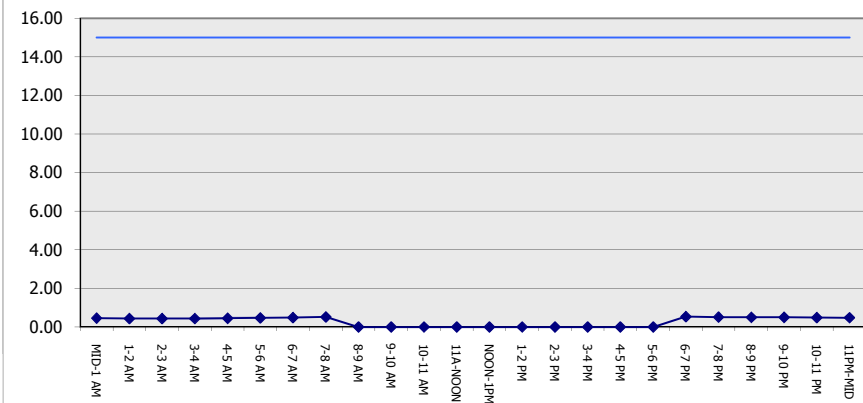
GRAPHICAL REPRESENTATION OF TRAFFIC MODEL INPUT AND OUTPUT

SATURDAY WESTBOUND DIRECTION

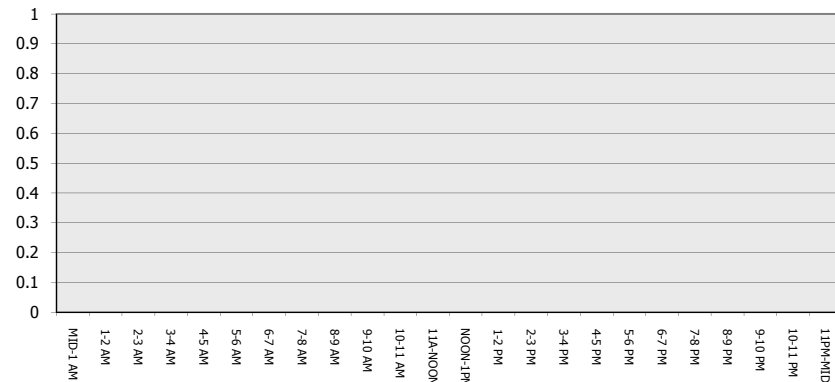
Main Route - Traffic Demand (Vehicles Per Hour)



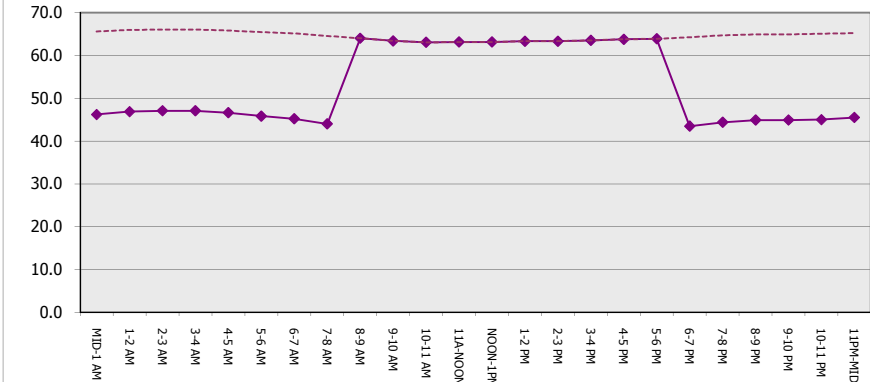
Main Route Average Delay Per Vehicle (Minutes)



Main Route - Average Queue Length (Vehicles)



Main Route - Average Speed (MPH)



STH 441: USH 41 TO RACINE ST (WINNEBAGO COUNTY) NIGHTTIME CLOSURE DIVERSION ROUTE: PROSPECT AVENUE - STH 47	AUGUST Analyzed for 2009 Construction Season
--	---

SUMMARY OF TRAFFIC MODEL OUTPUT

SATURDAY EASTBOUND DIRECTION

TIME OF DAY	FLOWS AND CAPACITY IN VEH/HR								AVERAGE SPEEDS IN MPH						
	MAIN		DIVERSION		SITE CAPA CITY	FLOW MAIN ROUTE	FLOW DIVER -TING	TOTAL DIVN FLOW	AV.DEL PER VEH (MINS)	AVERAGE QUEUE (VEH)	MAIN ROUTE		SITE	ALTERNATE ROUTE	
	DEMAND FLOW	PCT HEAVY	NORMAL FLOW	PCT HEAVY							WITHOUT WORK ZN	WITH WORK ZN		WITHOUT WORK ZN	WITH WORK ZN
MID-1 AM	512	0.0	156	0.0	1500	512	0	156	0.47	0	65.5	45.8	43.5	23.7	23.7
1-2 AM	314	0.0	96	0.0	1500	314	0	96	0.45	0	65.8	46.5	44.2	24.1	24.1
2-3 AM	252	0.0	77	0.0	1500	252	0	77	0.45	0	65.9	46.8	44.5	24.2	24.2
3-4 AM	188	0.0	58	0.0	1500	188	0	58	0.44	0	66.0	47.0	44.7	24.4	24.4
4-5 AM	174	0.0	54	0.0	1500	174	0	54	0.44	0	66.1	47.1	44.8	24.4	24.4
5-6 AM	376	0.0	115	0.0	1500	376	0	115	0.46	0	65.7	46.3	44.0	24.0	24.0
6-7 AM	673	0.0	206	0.0	1500	673	0	206	0.49	0	65.1	45.2	42.8	23.3	23.3
7-8 AM	759	0.0	233	0.0	1500	759	0	233	0.50	0	65.0	44.9	42.5	23.0	23.0
8-9 AM	1010	0.0	310	0.0	OFF	1010	0	310	0.00	0	64.5	64.5	64.5	22.5	22.5
9-10 AM	1373	0.0	421	0.0	OFF	1373	0	421	0.00	0	63.8	63.8	63.8	21.6	21.6
10-11 AM	1721	0.0	528	0.0	OFF	1721	0	528	0.00	0	63.2	63.2	63.2	20.8	20.8
11A-NOON	1951	0.0	598	0.0	OFF	1951	0	598	0.00	0	62.7	62.7	62.7	20.2	20.2
NOON-1PM	2072	0.0	635	0.0	OFF	2072	0	635	0.00	0	62.5	62.5	62.5	20.0	20.0
1-2 PM	2098	0.0	643	0.0	OFF	2098	0	643	0.00	0	62.5	62.5	62.5	19.9	19.9
2-3 PM	2049	0.0	628	0.0	OFF	2049	0	628	0.00	0	62.6	62.6	62.6	20.0	20.0
3-4 PM	2134	0.0	654	0.0	OFF	2134	0	654	0.00	0	62.4	62.4	62.4	19.8	19.8
4-5 PM	1980	0.0	607	0.0	OFF	1980	0	607	0.00	0	62.7	62.7	62.7	20.2	20.2
5-6 PM	1931	0.0	592	0.0	OFF	1931	0	592	0.00	0	62.8	62.8	62.8	20.3	20.3
6-7 PM	1766	0.0	541	0.0	1499	1766	0	541	6.02	150	63.1	12.5	30.8	20.7	21.3
7-8 PM	1381	0.0	423	0.0	1499	1381	0	423	8.95	216	63.8	10.1	30.8	21.6	22.5
8-9 PM	1470	0.0	451	0.0	1500	1470	0	451	5.98	133	63.7	12.4	30.8	21.4	21.9
9-10 PM	1340	0.0	411	0.0	1499	1340	0	411	2.26	53	63.9	22.4	32.9	21.7	21.9
10-11 PM	1123	0.0	344	0.0	1500	1123	0	344	0.54	0	64.3	43.5	41.1	22.2	22.2
11PM-MID	709	0.0	217	0.0	1500	709	0	217	0.49	0	65.1	45.0	42.7	23.2	23.2

"OFF" INDICATES NO ROAD WORK (ALL LANES OPEN TO TRAFFIC)

----- SITE BREAKDOWN DELAYS -----	
BREAKDOWN DURATION (MINS)	0
RANGE OF QUEUE DELAY - MIN	0.0
(VEH-H) MAX	0.0
RANGE OF DIVN DELAY - MIN	0.0
(VEH-H) MAX	0.0
AV BREAKDOWNS PER DAY	0.00
AV QUEUE DELAY/DAY (VEH-H)	0.0
AV DIVN DELAY/DAY (VEH-H)	0.0
AV TOTAL DELAY/DAY (VEH-H)	0.0

----- SITE ACCIDENT DELAYS -----	
ACCIDENT DURATION (MINS)	0
RANGE OF QUEUE DELAY - MIN	0.0
(VEH-H) MAX	0.0
RANGE OF DIVN DELAY - MIN	0.0
(VEH-H) MAX	0.0
AV ACCIDENTS PER DAY	0.00
AV QUEUE DELAY/DAY (VEH-H)	0.0
AV DIVN DELAY/DAY (VEH-H)	0.0
AV TOTAL DELAY/DAY (VEH-H)	0.0

AVERAGE ACCIDENT NUMBERS (PIA/DAY)	
MAIN ROUTE WITHOUT WORKS	0.0056
MAIN ROUTE WITH WORKS	0.0049
DIVERSION	0.0719

PIA: Personal Injury Accidents

IMPACTS ON ROAD USERS	
ROAD USER COSTS PER DAY (DOLLARS)	\$10,249
CONGESTED HOURS PER DAY*	0

*Delays Exceeding 15 Minutes

STH 441: USH 41 TO RACINE ST (WINNEBAGO COUNTY)
NIGHTTIME CLOSURE
DIVERSION ROUTE: PROSPECT AVENUE - STH 47

AUGUST
 Analyzed for 2009
 Construction Season

GRAPHICAL REPRESENTATION OF TRAFFIC MODEL INPUT AND OUTPUT
SATURDAY EASTBOUND DIRECTION

