

STH 441: USH 41 TO RACINE ST (WINNEBAGO COUNTY) NIGHTTIME CLOSURE DIVERSION ROUTE: PROSPECT AVENUE - STH 47	MAY
	Analyzed for 2009 Construction Season

SUMMARY OF TRAFFIC MODEL OUTPUT

SUNDAY WESTBOUND DIRECTION

TIME OF DAY	FLOWS AND CAPACITY IN VEH/HR							AVERAGE SPEEDS IN MPH							
	MAIN ROUTE		ALTERNATE ROUTE		SITE CAPA CITY	FLOW MAIN ROUTE	FLOW DIVER -TING	TOTAL DIVN FLOW	AV.DEL PER VEH (MINS)	AVERAGE QUEUE (VEH)	MAIN ROUTE		ALTERNATE ROUTE		
	DEMAND FLOW	PCT HEAVY	NORMAL FLOW	PCT HEAVY							WITHOUT WORK ZN	WITH WORK ZN	SITE	WITHOUT WORK ZN	WITH WORK ZN
MID-1 AM	400	0.0	123	0.0	1500	400	0	123	0.46	0	65.6	46.2	43.9	23.9	23.9
1-2 AM	232	0.0	71	0.0	1500	232	0	71	0.45	0	66.0	46.8	44.5	24.3	24.3
2-3 AM	176	0.0	54	0.0	1500	176	0	54	0.44	0	66.1	47.1	44.8	24.4	24.4
3-4 AM	163	0.0	50	0.0	1500	163	0	50	0.44	0	66.1	47.1	44.8	24.5	24.5
4-5 AM	133	0.0	41	0.0	1500	133	0	41	0.44	0	66.1	47.3	45.0	24.5	24.5
5-6 AM	307	0.0	94	0.0	1500	307	0	94	0.45	0	65.8	46.6	44.3	24.1	24.1
6-7 AM	437	0.0	134	0.0	1500	437	0	134	0.46	0	65.6	46.1	43.7	23.8	23.8
7-8 AM	515	0.0	158	0.0	1500	515	0	158	0.47	0	65.5	45.8	43.5	23.7	23.7
8-9 AM	820	0.0	251	0.0	1500	820	0	251	0.50	0	64.8	44.6	42.3	22.9	22.9
9-10 AM	1146	0.0	351	0.0	OFF	1146	0	351	0.00	0	64.3	64.3	64.3	22.2	22.2
10-11 AM	1558	0.0	478	0.0	OFF	1558	0	478	0.00	0	63.5	63.5	63.5	21.2	21.2
11A-NOON	1683	0.0	516	0.0	OFF	1683	0	516	0.00	0	63.3	63.3	63.3	20.9	20.9
NOON-1PM	1907	0.0	585	0.0	OFF	1907	0	585	0.00	0	62.8	62.8	62.8	20.4	20.4
1-2 PM	1754	0.0	537	0.0	OFF	1754	0	537	0.00	0	63.1	63.1	63.1	20.7	20.7
2-3 PM	1644	0.0	504	0.0	OFF	1644	0	504	0.00	0	63.3	63.3	63.3	21.0	21.0
3-4 PM	1712	0.0	525	0.0	OFF	1712	0	525	0.00	0	63.2	63.2	63.2	20.8	20.8
4-5 PM	1585	0.0	486	0.0	OFF	1585	0	486	0.00	0	63.4	63.4	63.4	21.1	21.1
5-6 PM	1518	0.0	465	0.0	OFF	1518	0	465	0.00	0	63.5	63.5	63.5	21.3	21.3
6-7 PM	1175	0.0	360	0.0	OFF	1175	0	360	0.00	0	64.2	64.2	64.2	22.0	22.0
7-8 PM	955	0.0	293	0.0	1500	955	0	293	0.51	0	64.6	44.2	41.9	22.6	22.6
8-9 PM	831	0.0	254	0.0	1500	831	0	254	0.50	0	64.8	44.6	42.3	22.9	22.9
9-10 PM	651	0.0	200	0.0	1500	651	0	200	0.49	0	65.1	45.3	42.9	23.3	23.3
10-11 PM	423	0.0	130	0.0	1500	423	0	130	0.46	0	65.6	46.1	43.8	23.8	23.8
11PM-MID	206	0.0	63	0.0	1500	206	0	63	0.44	0	66.0	46.9	44.6	24.3	24.3

"OFF" INDICATES NO ROAD WORK (ALL LANES OPEN TO TRAFFIC)

----- SITE BREAKDOWN DELAYS -----	
BREAKDOWN DURATION (MINS)	0
RANGE OF QUEUE DELAY - MIN	0.0
(VEH-H) MAX	0.0
RANGE OF DIVN DELAY - MIN	0.0
(VEH-H) MAX	0.0
AV BREAKDOWNS PER DAY	0.00
AV QUEUE DELAY/DAY (VEH-H)	0.0
AV DIVN DELAY/DAY (VEH-H)	0.0
AV TOTAL DELAY/DAY (VEH-H)	0.0

----- SITE ACCIDENT DELAYS -----	
ACCIDENT DURATION (MINS)	0
RANGE OF QUEUE DELAY - MIN	0.0
(VEH-H) MAX	0.0
RANGE OF DIVN DELAY - MIN	0.0
(VEH-H) MAX	0.0
AV ACCIDENTS PER DAY	0.00
AV QUEUE DELAY/DAY (VEH-H)	0.0
AV DIVN DELAY/DAY (VEH-H)	0.0
AV TOTAL DELAY/DAY (VEH-H)	0.0

AVERAGE ACCIDENT NUMBERS (PIA/DAY)	
MAIN ROUTE WITHOUT WORKS	0.0042
MAIN ROUTE WITH WORKS	0.0038
DIVERSION	0.0537

PIA: Personal Injury Accidents

IMPACTS ON ROAD USERS	
ROAD USER COSTS PER DAY (DOLLARS)	\$781
CONGESTED HOURS PER DAY*	0

*Delays Exceeding 15 Minutes

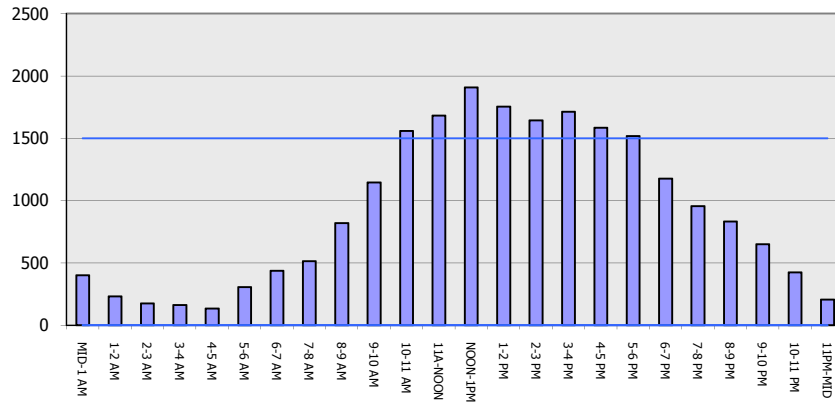
STH 441: USH 41 TO RACINE ST (WINNEBAGO COUNTY)
NIGHTTIME CLOSURE
DIVERSION ROUTE: PROSPECT AVENUE - STH 47

MAY
 Analyzed for 2009
 Construction Season

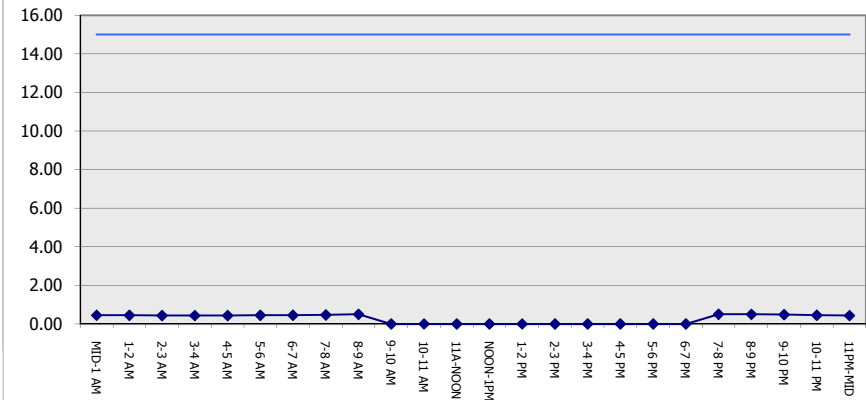
GRAPHICAL REPRESENTATION OF TRAFFIC MODEL INPUT AND OUTPUT

SUNDAY WESTBOUND DIRECTION

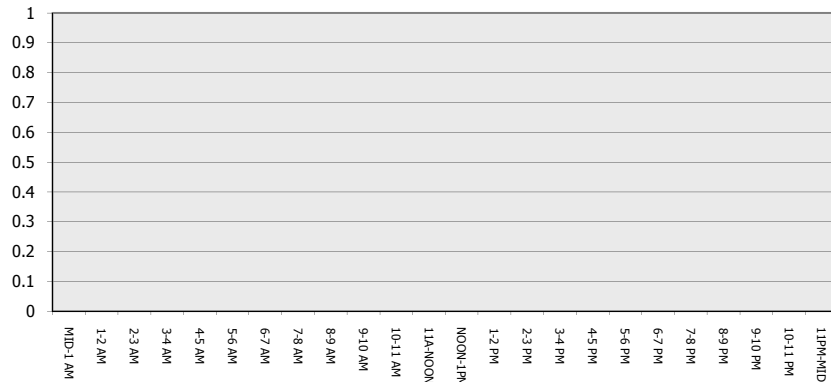
Main Route - Traffic Demand (Vehicles Per Hour)



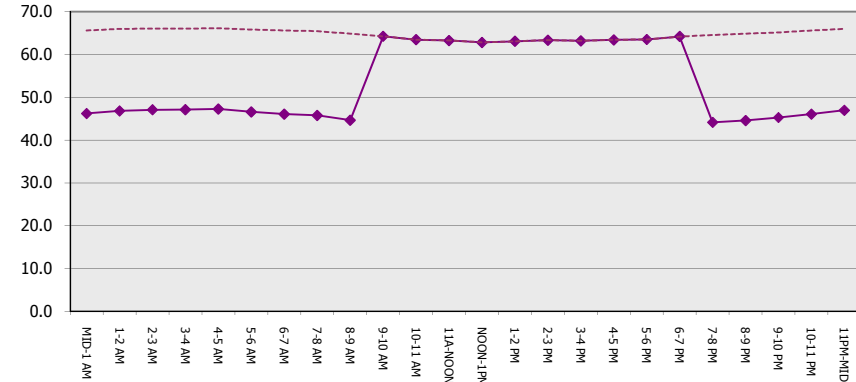
Main Route Average Delay Per Vehicle (Minutes)



Main Route - Average Queue Length (Vehicles)



Main Route - Average Speed (MPH)



STH 441: USH 41 TO RACINE ST (WINNEBAGO COUNTY) NIGHTTIME CLOSURE DIVERSION ROUTE: PROSPECT AVENUE - STH 47	MAY Analyzed for 2009 Construction Season
--	--

SUMMARY OF TRAFFIC MODEL OUTPUT

SUNDAY EASTBOUND DIRECTION

TIME OF DAY	FLOWS AND CAPACITY IN VEH/HR								AVERAGE SPEEDS IN MPH						
	MAIN		DIVERSION		SITE CAPA CITY	FLOW MAIN ROUTE	FLOW DIVER -TING	TOTAL DIVN FLOW	AV.DEL PER VEH (MINS)	AVERAGE QUEUE (VEH)	MAIN ROUTE		SITE	ALTERNATE ROUTE	
	DEMAND FLOW	PCT HEAVY	NORMAL FLOW	PCT HEAVY							WITHOUT WORK ZN	WITH WORK ZN		WITHOUT WORK ZN	WITH WORK ZN
MID-1 AM	427	0.0	131	0.0	1500	427	0	131	0.46	0	65.6	46.1	43.8	23.8	23.8
1-2 AM	269	0.0	82	0.0	1500	269	0	82	0.45	0	65.9	46.7	44.4	24.2	24.2
2-3 AM	234	0.0	72	0.0	1500	234	0	72	0.45	0	66.0	46.8	44.5	24.3	24.3
3-4 AM	155	0.0	47	0.0	1500	155	0	47	0.44	0	66.1	47.1	44.8	24.5	24.5
4-5 AM	118	0.0	36	0.0	1500	118	0	36	0.43	0	66.1	47.3	45.0	24.6	24.6
5-6 AM	274	0.0	84	0.0	1500	274	0	84	0.45	0	65.9	46.7	44.4	24.2	24.2
6-7 AM	527	0.0	162	0.0	1500	527	0	162	0.47	0	65.4	45.7	43.4	23.6	23.6
7-8 AM	503	0.0	154	0.0	1500	503	0	154	0.47	0	65.5	45.8	43.5	23.7	23.7
8-9 AM	861	0.0	264	0.0	1500	861	0	264	0.51	0	64.8	44.5	42.2	22.8	22.8
9-10 AM	1194	0.0	367	0.0	OFF	1194	0	367	0.00	0	64.1	64.1	64.1	22.0	22.0
10-11 AM	1636	0.0	501	0.0	OFF	1636	0	501	0.00	0	63.3	63.3	63.3	21.0	21.0
11A-NOON	1658	0.0	509	0.0	OFF	1658	0	509	0.00	0	63.3	63.3	63.3	20.9	20.9
NOON-1PM	2081	0.0	638	0.0	OFF	2081	0	638	0.00	0	62.5	62.5	62.5	19.9	19.9
1-2 PM	2090	0.0	640	0.0	OFF	2090	0	640	0.00	0	62.5	62.5	62.5	19.9	19.9
2-3 PM	2122	0.0	651	0.0	OFF	2122	0	651	0.00	0	62.4	62.4	62.4	19.9	19.9
3-4 PM	2222	0.0	682	0.0	OFF	2222	0	682	0.00	0	62.2	62.2	62.2	19.6	19.6
4-5 PM	2273	0.0	697	0.0	OFF	2273	0	697	0.00	0	62.2	62.2	62.2	19.5	19.5
5-6 PM	2296	0.0	704	0.0	OFF	2296	0	704	0.00	0	62.1	62.1	62.1	19.4	19.4
6-7 PM	2009	0.0	616	0.0	OFF	2009	0	616	0.00	0	62.7	62.7	62.7	20.1	20.1
7-8 PM	1560	0.0	479	0.0	1499	1560	0	479	2.85	51	63.5	18.8	30.8	21.2	21.3
8-9 PM	1339	0.0	411	0.0	1499	1339	0	411	1.37	21	63.9	29.0	33.9	21.7	21.7
9-10 PM	878	0.0	269	0.0	1500	878	0	269	0.51	0	64.8	44.5	42.1	22.8	22.8
10-11 PM	664	0.0	204	0.0	1500	664	0	204	0.49	0	65.1	45.2	42.9	23.3	23.3
11PM-MID	308	0.0	95	0.0	1500	308	0	95	0.45	0	65.8	46.6	44.3	24.1	24.1

"OFF" INDICATES NO ROAD WORK (ALL LANES OPEN TO TRAFFIC)

----- SITE BREAKDOWN DELAYS -----	
BREAKDOWN DURATION (MINS)	0
RANGE OF QUEUE DELAY - MIN	0.0
(VEH-H) MAX	0.0
RANGE OF DIVN DELAY - MIN	0.0
(VEH-H) MAX	0.0
AV BREAKDOWNS PER DAY	0.00
AV QUEUE DELAY/DAY (VEH-H)	0.0
AV DIVN DELAY/DAY (VEH-H)	0.0
AV TOTAL DELAY/DAY (VEH-H)	0.0

----- SITE ACCIDENT DELAYS -----	
ACCIDENT DURATION (MINS)	0
RANGE OF QUEUE DELAY - MIN	0.0
(VEH-H) MAX	0.0
RANGE OF DIVN DELAY - MIN	0.0
(VEH-H) MAX	0.0
AV ACCIDENTS PER DAY	0.00
AV QUEUE DELAY/DAY (VEH-H)	0.0
AV DIVN DELAY/DAY (VEH-H)	0.0
AV TOTAL DELAY/DAY (VEH-H)	0.0

AVERAGE ACCIDENT NUMBERS (PIA/DAY)	
MAIN ROUTE WITHOUT WORKS	0.0053
MAIN ROUTE WITH WORKS	0.0048
DIVERSION	0.0678

PIA: Personal Injury Accidents

IMPACTS ON ROAD USERS	
ROAD USER COSTS PER DAY (DOLLARS)	\$2,290
CONGESTED HOURS PER DAY*	0

*Delays Exceeding 15 Minutes

STH 441: USH 41 TO RACINE ST (WINNEBAGO COUNTY)
NIGHTTIME CLOSURE
DIVERSION ROUTE: PROSPECT AVENUE - STH 47

MAY
 Analyzed for 2009
 Construction Season

GRAPHICAL REPRESENTATION OF TRAFFIC MODEL INPUT AND OUTPUT
SUNDAY EASTBOUND DIRECTION

