

STH 441: USH 41 TO RACINE ST (WINNEBAGO COUNTY) NIGHTTIME CLOSURE DIVERSION ROUTE: PROSPECT AVENUE - STH 47	MAY
	Analyzed for 2009 Construction Season

SUMMARY OF TRAFFIC MODEL OUTPUT

SATURDAY WESTBOUND DIRECTION

TIME OF DAY	FLOWS AND CAPACITY IN VEH/HR							AVERAGE SPEEDS IN MPH							
	MAIN ROUTE		ALTERNATE ROUTE		SITE CAPA CITY	FLOW MAIN ROUTE	FLOW DIVER -TING	TOTAL DIVN FLOW	AV.DEL PER VEH (MINS)	AVERAGE QUEUE (VEH)	MAIN ROUTE		ALTERNATE ROUTE		
	DEMAND FLOW	PCT HEAVY	NORMAL FLOW	PCT HEAVY							WITHOUT WORK ZN	WITH WORK ZN	SITE	WITHOUT WORK ZN	WITH WORK ZN
MID-1 AM	343	0.0	105	0.0	1500	343	0	105	0.46	0	65.8	46.4	44.1	24.0	24.0
1-2 AM	199	0.0	61	0.0	1500	199	0	61	0.44	0	66.0	46.9	44.7	24.3	24.3
2-3 AM	217	0.0	67	0.0	1500	217	0	67	0.44	0	66.0	46.9	44.6	24.3	24.3
3-4 AM	171	0.0	53	0.0	1500	171	0	53	0.44	0	66.1	47.1	44.8	24.5	24.5
4-5 AM	292	0.0	90	0.0	1500	292	0	90	0.45	0	65.8	46.6	44.3	24.2	24.2
5-6 AM	499	0.0	153	0.0	1500	499	0	153	0.47	0	65.5	45.8	43.5	23.7	23.7
6-7 AM	757	0.0	232	0.0	1500	757	0	232	0.50	0	65.0	44.9	42.5	23.0	23.0
7-8 AM	1048	0.0	321	0.0	1499	1048	0	321	0.54	0	64.5	43.5	41.1	22.4	22.4
8-9 AM	1496	0.0	459	0.0	OFF	1496	0	459	0.00	0	63.6	63.6	63.6	21.3	21.3
9-10 AM	1678	0.0	515	0.0	OFF	1678	0	515	0.00	0	63.3	63.3	63.3	20.9	20.9
10-11 AM	1771	0.0	544	0.0	OFF	1771	0	544	0.00	0	63.1	63.1	63.1	20.7	20.7
11A-NOON	1762	0.0	540	0.0	OFF	1762	0	540	0.00	0	63.1	63.1	63.1	20.7	20.7
NOON-1PM	1855	0.0	569	0.0	OFF	1855	0	569	0.00	0	62.9	62.9	62.9	20.5	20.5
1-2 PM	1733	0.0	531	0.0	OFF	1733	0	531	0.00	0	63.2	63.2	63.2	20.7	20.7
2-3 PM	1623	0.0	497	0.0	OFF	1623	0	497	0.00	0	63.3	63.3	63.3	21.1	21.1
3-4 PM	1640	0.0	502	0.0	OFF	1640	0	502	0.00	0	63.3	63.3	63.3	21.0	21.0
4-5 PM	1491	0.0	457	0.0	OFF	1491	0	457	0.00	0	63.6	63.6	63.6	21.4	21.4
5-6 PM	1482	0.0	454	0.0	OFF	1482	0	454	0.00	0	63.7	63.7	63.7	21.4	21.4
6-7 PM	1277	0.0	391	0.0	1500	1277	0	391	0.74	0	64.0	38.7	36.1	21.9	21.9
7-8 PM	1029	0.0	315	0.0	1500	1029	0	315	0.52	0	64.5	43.9	41.6	22.4	22.4
8-9 PM	942	0.0	288	0.0	1500	942	0	288	0.51	0	64.6	44.2	41.9	22.6	22.6
9-10 PM	813	0.0	249	0.0	1500	813	0	249	0.50	0	64.9	44.6	42.4	22.9	22.9
10-11 PM	632	0.0	194	0.0	1500	632	0	194	0.48	0	65.2	45.3	43.0	23.3	23.3
11PM-MID	484	0.0	148	0.0	1500	484	0	148	0.47	0	65.5	45.9	43.6	23.7	23.7

"OFF" INDICATES NO ROAD WORK (ALL LANES OPEN TO TRAFFIC)

----- SITE BREAKDOWN DELAYS -----	
BREAKDOWN DURATION (MINS)	0
RANGE OF QUEUE DELAY - MIN	0.0
(VEH-H) MAX	0.0
RANGE OF DIVN DELAY - MIN	0.0
(VEH-H) MAX	0.0
AV BREAKDOWNS PER DAY	0.00
AV QUEUE DELAY/DAY (VEH-H)	0.0
AV DIVN DELAY/DAY (VEH-H)	0.0
AV TOTAL DELAY/DAY (VEH-H)	0.0

----- SITE ACCIDENT DELAYS -----	
ACCIDENT DURATION (MINS)	0
RANGE OF QUEUE DELAY - MIN	0.0
(VEH-H) MAX	0.0
RANGE OF DIVN DELAY - MIN	0.0
(VEH-H) MAX	0.0
AV ACCIDENTS PER DAY	0.00
AV QUEUE DELAY/DAY (VEH-H)	0.0
AV DIVN DELAY/DAY (VEH-H)	0.0
AV TOTAL DELAY/DAY (VEH-H)	0.0

AVERAGE ACCIDENT NUMBERS (PIA/DAY)	
MAIN ROUTE WITHOUT WORKS	0.0048
MAIN ROUTE WITH WORKS	0.0042
DIVERSION	0.0618

PIA: Personal Injury Accidents

IMPACTS ON ROAD USERS	
ROAD USER COSTS PER DAY (DOLLARS)	\$1,280
CONGESTED HOURS PER DAY*	0

*Delays Exceeding 15 Minutes

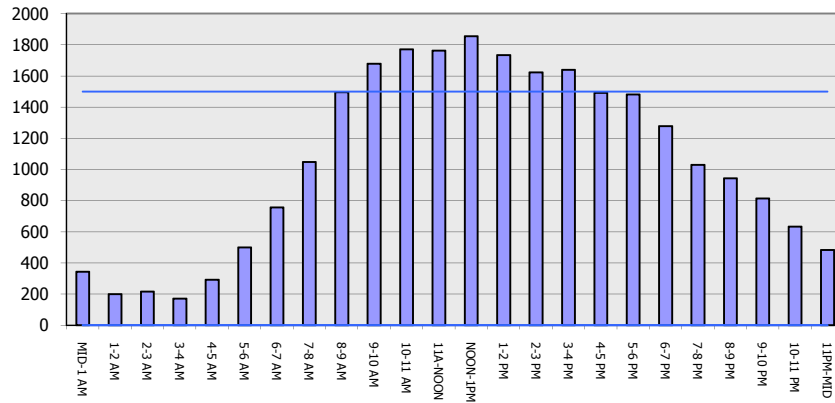
STH 441: USH 41 TO RACINE ST (WINNEBAGO COUNTY)
NIGHTTIME CLOSURE
DIVERSION ROUTE: PROSPECT AVENUE - STH 47

MAY
 Analyzed for 2009
 Construction Season

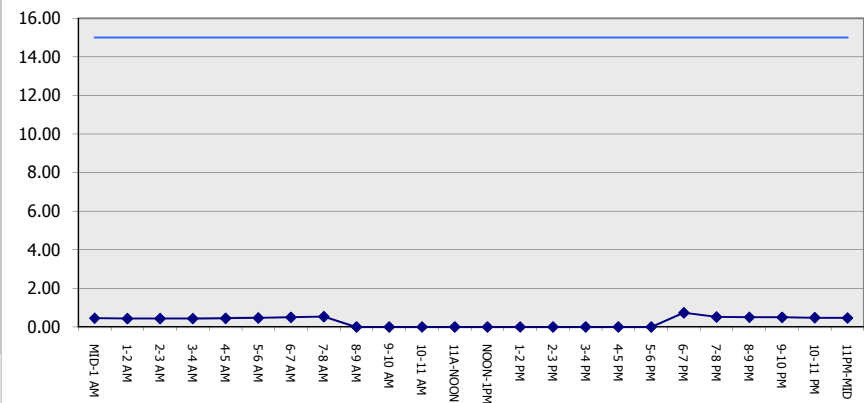
GRAPHICAL REPRESENTATION OF TRAFFIC MODEL INPUT AND OUTPUT

SATURDAY WESTBOUND DIRECTION

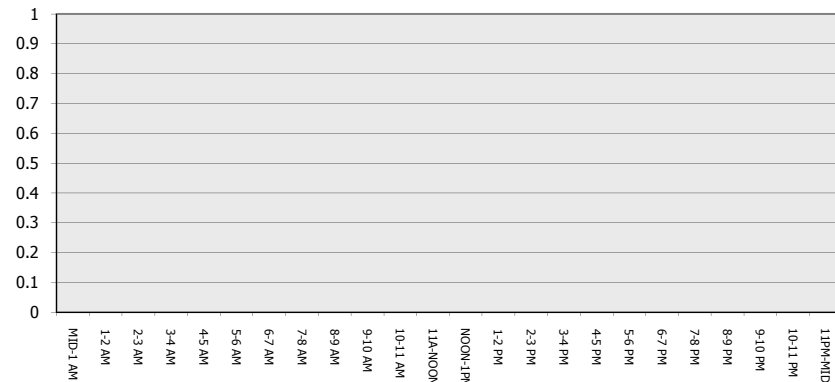
Main Route - Traffic Demand (Vehicles Per Hour)



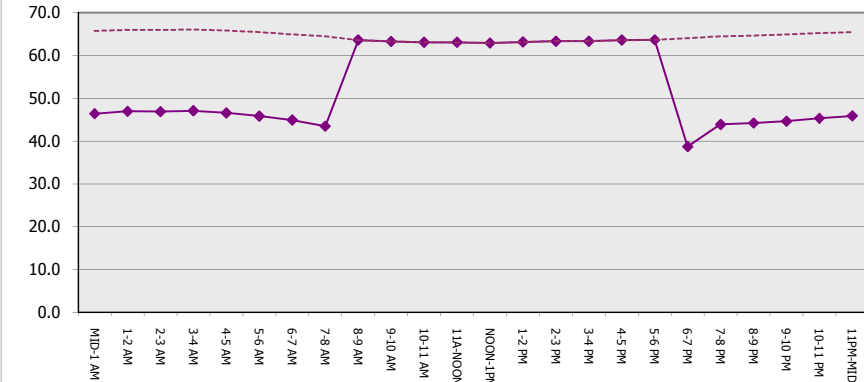
Main Route Average Delay Per Vehicle (Minutes)



Main Route - Average Queue Length (Vehicles)



Main Route - Average Speed (MPH)



**STH 441: USH 41 TO RACINE ST (WINNEBAGO COUNTY)
NIGHTTIME CLOSURE
DIVERSION ROUTE: PROSPECT AVENUE - STH 47**

MAY
Analyzed for 2009
Construction Season

SUMMARY OF TRAFFIC MODEL OUTPUT

SATURDAY EASTBOUND DIRECTION

TIME OF DAY	FLOWS AND CAPACITY IN VEH/HR								AVERAGE SPEEDS IN MPH						
	MAIN		DIVERSION		SITE CAPA CITY	FLOW MAIN ROUTE	FLOW DIVER -TING	TOTAL DIVN FLOW	AV.DEL PER VEH (MINS)	AVERAGE QUEUE (VEH)	MAIN ROUTE		SITE	ALTERNATE ROUTE	
	DEMAND FLOW	PCT HEAVY	NORMAL FLOW	PCT HEAVY							WITHOUT WORK ZN	WITH WORK ZN		WITHOUT WORK ZN	WITH WORK ZN
MID-1 AM	478	0.0	146	0.0	1500	478	0	146	0.47	0	65.5	45.9	43.6	23.7	23.7
1-2 AM	246	0.0	75	0.0	1500	246	0	75	0.45	0	66.0	46.8	44.5	24.3	24.3
2-3 AM	248	0.0	76	0.0	1500	248	0	76	0.45	0	66.0	46.8	44.5	24.3	24.3
3-4 AM	148	0.0	45	0.0	1500	148	0	45	0.44	0	66.1	47.2	44.9	24.5	24.5
4-5 AM	184	0.0	57	0.0	1500	184	0	57	0.44	0	66.0	47.0	44.8	24.4	24.4
5-6 AM	371	0.0	114	0.0	1500	371	0	114	0.46	0	65.7	46.3	44.0	24.0	24.0
6-7 AM	728	0.0	223	0.0	1500	728	0	223	0.49	0	65.0	45.0	42.7	23.1	23.1
7-8 AM	927	0.0	284	0.0	1500	927	0	284	0.51	0	64.6	44.3	41.9	22.7	22.7
8-9 AM	1204	0.0	370	0.0	OFF	1204	0	370	0.00	0	64.1	64.1	64.1	22.0	22.0
9-10 AM	1500	0.0	460	0.0	OFF	1500	0	460	0.00	0	63.6	63.6	63.6	21.3	21.3
10-11 AM	1808	0.0	555	0.0	OFF	1808	0	555	0.00	0	63.0	63.0	63.0	20.6	20.6
11A-NOON	2064	0.0	633	0.0	OFF	2064	0	633	0.00	0	62.5	62.5	62.5	20.0	20.0
NOON-1PM	2198	0.0	674	0.0	OFF	2198	0	674	0.00	0	62.3	62.3	62.3	19.7	19.7
1-2 PM	2199	0.0	674	0.0	OFF	2199	0	674	0.00	0	62.3	62.3	62.3	19.7	19.7
2-3 PM	2214	0.0	678	0.0	OFF	2214	0	678	0.00	0	62.3	62.3	62.3	19.6	19.6
3-4 PM	2131	0.0	654	0.0	OFF	2131	0	654	0.00	0	62.4	62.4	62.4	19.8	19.8
4-5 PM	2193	0.0	672	0.0	OFF	2193	0	672	0.00	0	62.3	62.3	62.3	19.7	19.7
5-6 PM	2217	0.0	679	0.0	OFF	2217	0	679	0.00	0	62.2	62.2	62.2	19.6	19.6
6-7 PM	1969	0.0	603	0.0	1499	1969	0	603	9.36	252	62.7	10.2	30.8	20.2	21.3
7-8 PM	1644	0.0	504	0.0	1499	1524	120	624	19.77	505	63.3	7.2	30.8	21.0	22.2
8-9 PM	1418	0.0	434	0.0	1499	1401	17	452	17.76	451	63.7	7.5	30.8	21.5	23.4
9-10 PM	1204	0.0	370	0.0	1499	1204	0	370	9.99	257	64.1	9.7	32.0	22.0	23.2
10-11 PM	1056	0.0	323	0.0	1500	1056	0	323	0.78	12	64.4	38.0	40.7	22.4	22.4
11PM-MID	672	0.0	206	0.0	1500	672	0	206	0.49	0	65.1	45.2	42.8	23.3	23.3

"OFF" INDICATES NO ROAD WORK (ALL LANES OPEN TO TRAFFIC)

----- SITE BREAKDOWN DELAYS -----	
BREAKDOWN DURATION (MINS)	0
RANGE OF QUEUE DELAY - MIN	0.0
(VEH-H) MAX	0.0
RANGE OF DIVN DELAY - MIN	0.0
(VEH-H) MAX	0.0
AV BREAKDOWNS PER DAY	0.00
AV QUEUE DELAY/DAY (VEH-H)	0.0
AV DIVN DELAY/DAY (VEH-H)	0.0
AV TOTAL DELAY/DAY (VEH-H)	0.0

----- SITE ACCIDENT DELAYS -----	
ACCIDENT DURATION (MINS)	0
RANGE OF QUEUE DELAY - MIN	0.0
(VEH-H) MAX	0.0
RANGE OF DIVN DELAY - MIN	0.0
(VEH-H) MAX	0.0
AV ACCIDENTS PER DAY	0.00
AV QUEUE DELAY/DAY (VEH-H)	0.0
AV DIVN DELAY/DAY (VEH-H)	0.0
AV TOTAL DELAY/DAY (VEH-H)	0.0

AVERAGE ACCIDENT NUMBERS (PIA/DAY)	
MAIN ROUTE WITHOUT WORKS	0.0059
MAIN ROUTE WITH WORKS	0.0052
DIVERSION	0.0771

PIA: Personal Injury Accidents

IMPACTS ON ROAD USERS	
ROAD USER COSTS PER DAY (DOLLARS)	\$25,165
CONGESTED HOURS PER DAY*	2

*Delays Exceeding 15 Minutes

STH 441: USH 41 TO RACINE ST (WINNEBAGO COUNTY)
NIGHTTIME CLOSURE
DIVERSION ROUTE: PROSPECT AVENUE - STH 47

MAY
 Analyzed for 2009
 Construction Season

GRAPHICAL REPRESENTATION OF TRAFFIC MODEL INPUT AND OUTPUT
SATURDAY EASTBOUND DIRECTION

