

STH 441: USH 41 TO RACINE ST (WINNEBAGO COUNTY) NIGHTTIME CLOSURE DIVERSION ROUTE: PROSPECT AVENUE - STH 47	MAY
	Analyzed for 2009 Construction Season

SUMMARY OF TRAFFIC MODEL OUTPUT

MON-THUR WESTBOUND DIRECTION

TIME OF DAY	FLOWS AND CAPACITY IN VEH/HR						AVERAGE SPEEDS IN MPH								
	MAIN ROUTE		ALTERNATE ROUTE		SITE CAPA CITY	FLOW MAIN ROUTE	FLOW DIVER -TING	TOTAL DIVN FLOW	AV.DEL PER VEH (MINS)	AVERAGE QUEUE (VEH)	MAIN ROUTE		ALTERNATE ROUTE		
	DEMAND FLOW	PCT HEAVY	NORMAL FLOW	PCT HEAVY							WITHOUT WORK ZN	WITH WORK ZN	SITE	WITHOUT WORK ZN	WITH WORK ZN
MID-1 AM	152	0.0	46	0.0	1500	152	0	46	0.44	0	66.1	47.1	44.9	24.5	24.5
1-2 AM	96	0.0	30	0.0	1500	96	0	30	0.43	0	66.2	47.4	45.1	24.6	24.6
2-3 AM	97	0.0	30	0.0	1500	97	0	30	0.43	0	66.2	47.4	45.1	24.6	24.6
3-4 AM	162	0.0	49	0.0	1500	162	0	49	0.44	0	66.1	47.1	44.8	24.5	24.5
4-5 AM	438	0.0	135	0.0	1500	438	0	135	0.46	0	65.6	46.0	43.7	23.8	23.8
5-6 AM	1360	0.0	417	0.0	OFF	1360	0	417	0.00	0	63.8	63.8	63.8	21.6	21.6
6-7 AM	2655	0.0	814	0.0	OFF	2655	0	814	0.00	0	59.3	59.3	59.3	18.6	18.6
7-8 AM	3717	0.0	1140	0.0	OFF	3717	0	1140	0.00	0	48.4	48.4	48.4	16.1	16.1
8-9 AM	2258	0.0	692	0.0	OFF	2258	0	692	0.00	0	62.2	62.2	62.2	19.6	19.6
9-10 AM	1681	0.0	516	0.0	OFF	1681	0	516	0.00	0	63.3	63.3	63.3	20.9	20.9
10-11 AM	1672	0.0	513	0.0	OFF	1672	0	513	0.00	0	63.3	63.3	63.3	20.9	20.9
11A-NOON	1762	0.0	540	0.0	OFF	1762	0	540	0.00	0	63.1	63.1	63.1	20.7	20.7
NOON-1PM	1918	0.0	588	0.0	OFF	1918	0	588	0.00	0	62.8	62.8	62.8	20.3	20.3
1-2 PM	2016	0.0	618	0.0	OFF	2016	0	618	0.00	0	62.7	62.7	62.7	20.1	20.1
2-3 PM	2163	0.0	663	0.0	OFF	2163	0	663	0.00	0	62.3	62.3	62.3	19.7	19.7
3-4 PM	2444	0.0	749	0.0	OFF	2444	0	749	0.00	0	61.5	61.5	61.5	19.1	19.1
4-5 PM	2772	0.0	850	0.0	OFF	2772	0	850	0.00	0	58.1	58.1	58.1	18.3	18.3
5-6 PM	2589	0.0	794	0.0	OFF	2589	0	794	0.00	0	60.0	60.0	60.0	18.8	18.8
6-7 PM	1781	0.0	546	0.0	OFF	1781	0	546	0.00	0	63.1	63.1	63.1	20.7	20.7
7-8 PM	1211	0.0	371	0.0	1500	1211	0	371	0.65	0	64.1	40.6	38.1	22.0	22.0
8-9 PM	998	0.0	306	0.0	1500	998	0	306	0.52	0	64.5	44.0	41.7	22.5	22.5
9-10 PM	845	0.0	259	0.0	1500	845	0	259	0.50	0	64.8	44.6	42.2	22.9	22.9
10-11 PM	558	0.0	171	0.0	1500	558	0	171	0.48	0	65.3	45.6	43.3	23.5	23.5
11PM-MID	328	0.0	100	0.0	1500	328	0	100	0.45	0	65.8	46.5	44.2	24.1	24.1

"OFF" INDICATES NO ROAD WORK (ALL LANES OPEN TO TRAFFIC)

----- SITE BREAKDOWN DELAYS -----	
BREAKDOWN DURATION (MINS)	0
RANGE OF QUEUE DELAY - MIN	0.0
(VEH-H) MAX	0.0
RANGE OF DIVN DELAY - MIN	0.0
(VEH-H) MAX	0.0
AV BREAKDOWNS PER DAY	0.00
AV QUEUE DELAY/DAY (VEH-H)	0.0
AV DIVN DELAY/DAY (VEH-H)	0.0
AV TOTAL DELAY/DAY (VEH-H)	0.0

----- SITE ACCIDENT DELAYS -----	
ACCIDENT DURATION (MINS)	0
RANGE OF QUEUE DELAY - MIN	0.0
(VEH-H) MAX	0.0
RANGE OF DIVN DELAY - MIN	0.0
(VEH-H) MAX	0.0
AV ACCIDENTS PER DAY	0.00
AV QUEUE DELAY/DAY (VEH-H)	0.0
AV DIVN DELAY/DAY (VEH-H)	0.0
AV TOTAL DELAY/DAY (VEH-H)	0.0

AVERAGE ACCIDENT NUMBERS (PIA/DAY)	
MAIN ROUTE WITHOUT WORKS	0.0068
MAIN ROUTE WITH WORKS	0.0065
DIVERSION	0.0873

PIA: Personal Injury Accidents

IMPACTS ON ROAD USERS	
ROAD USER COSTS PER DAY (DOLLARS)	\$627
CONGESTED HOURS PER DAY*	0

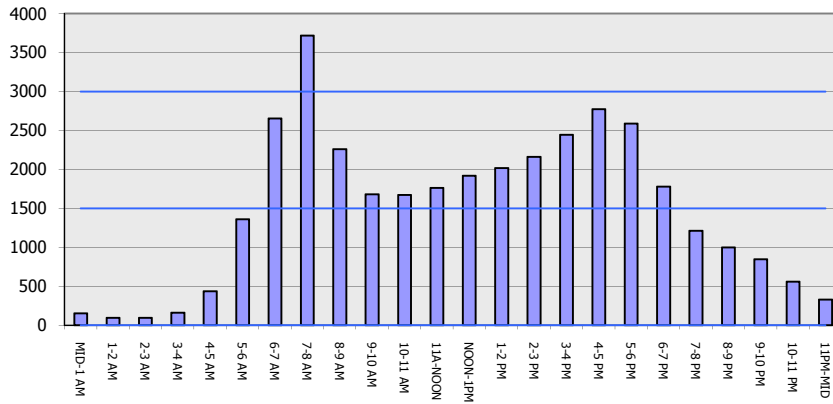
*Delays Exceeding 15 Minutes

STH 441: USH 41 TO RACINE ST (WINNEBAGO COUNTY)
NIGHTTIME CLOSURE
DIVERSION ROUTE: PROSPECT AVENUE - STH 47

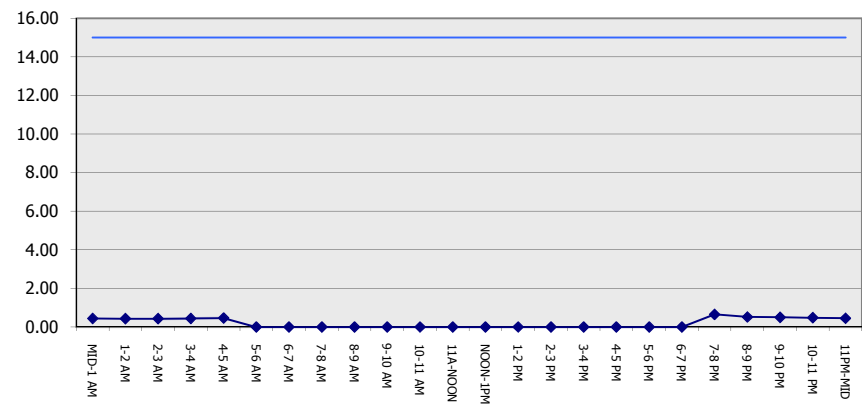
MAY
 Analyzed for 2009
 Construction Season

GRAPHICAL REPRESENTATION OF TRAFFIC MODEL INPUT AND OUTPUT
MON-THUR WESTBOUND DIRECTION

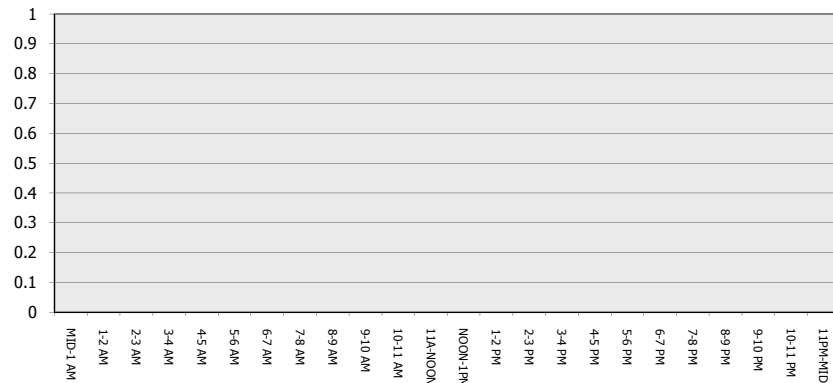
Main Route - Traffic Demand (Vehicles Per Hour)



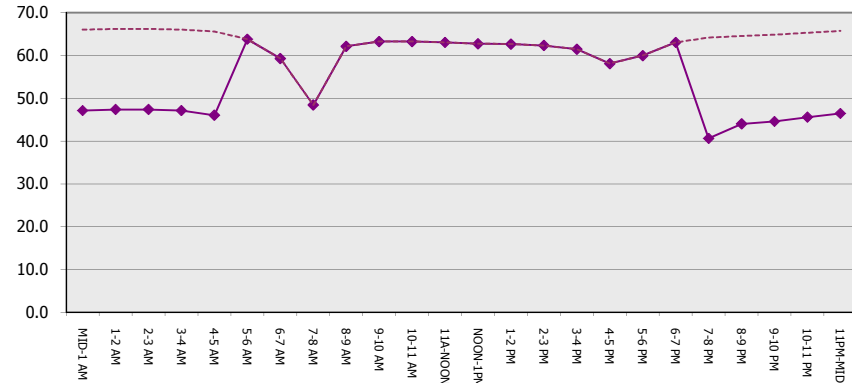
Main Route Average Delay Per Vehicle (Minutes)



Main Route - Average Queue Length (Vehicles)



Main Route - Average Speed (MPH)



STH 441: USH 41 TO RACINE ST (WINNEBAGO COUNTY) NIGHTTIME CLOSURE DIVERSION ROUTE: PROSPECT AVENUE - STH 47	MAY
	Analyzed for 2009 Construction Season

SUMMARY OF TRAFFIC MODEL OUTPUT	
MON-THUR	EASTBOUND DIRECTION

TIME OF DAY	FLOWS AND CAPACITY IN VEH/HR								AVERAGE SPEEDS IN MPH						
	MAIN		DIVERSION		SITE CAPA CITY	FLOW MAIN ROUTE	FLOW DIVER -TING	TOTAL DIVN FLOW	AV.DEL PER VEH (MINS)	AVERAGE QUEUE (VEH)	MAIN ROUTE		SITE	ALTERNATE ROUTE	
	DEMAND FLOW	PCT HEAVY	NORMAL FLOW	PCT HEAVY							WITHOUT WORK ZN	WITH WORK ZN		WITHOUT WORK ZN	WITH WORK ZN
MID-1 AM	278	0.0	86	0.0	1500	278	0	86	0.45	0	65.9	46.6	44.3	24.2	24.2
1-2 AM	177	0.0	55	0.0	1500	177	0	55	0.44	0	66.1	47.1	44.8	24.4	24.4
2-3 AM	141	0.0	43	0.0	1500	141	0	43	0.44	0	66.1	47.2	44.9	24.5	24.5
3-4 AM	100	0.0	31	0.0	1500	100	0	31	0.43	0	66.2	47.4	45.1	24.6	24.6
4-5 AM	206	0.0	63	0.0	1500	206	0	63	0.44	0	66.0	46.9	44.6	24.3	24.3
5-6 AM	755	0.0	232	0.0	OFF	755	0	232	0.00	0	65.0	65.0	65.0	23.0	23.0
6-7 AM	2101	0.0	644	0.0	OFF	2101	0	644	0.00	0	62.5	62.5	62.5	19.9	19.9
7-8 AM	3214	0.0	985	0.0	OFF	3214	0	985	0.00	0	53.6	53.6	53.6	17.3	17.3
8-9 AM	2302	0.0	706	0.0	OFF	2302	0	706	0.00	0	62.1	62.1	62.1	19.4	19.4
9-10 AM	1837	0.0	563	0.0	OFF	1837	0	563	0.00	0	63.0	63.0	63.0	20.5	20.5
10-11 AM	1871	0.0	573	0.0	OFF	1871	0	573	0.00	0	62.9	62.9	62.9	20.4	20.4
11A-NOON	2094	0.0	641	0.0	OFF	2094	0	641	0.00	0	62.5	62.5	62.5	19.9	19.9
NOON-1PM	2214	0.0	679	0.0	OFF	2214	0	679	0.00	0	62.3	62.3	62.3	19.6	19.6
1-2 PM	2299	0.0	704	0.0	OFF	2299	0	704	0.00	0	62.1	62.1	62.1	19.4	19.4
2-3 PM	3144	0.0	964	0.0	OFF	3144	0	964	0.00	0	54.3	54.3	54.3	17.5	17.5
3-4 PM	3790	0.0	1162	0.0	OFF	3790	0	1162	0.00	0	47.7	47.7	47.7	15.9	15.9
4-5 PM	4553	0.0	1396	0.0	OFF	4553	0	1396	0.00	0	39.9	39.9	39.9	14.2	14.2
5-6 PM	3992	0.0	1224	0.0	OFF	3992	0	1224	0.00	0	45.6	45.6	45.6	15.5	15.5
6-7 PM	2544	0.0	780	0.0	OFF	2544	0	780	0.00	0	60.4	60.4	60.4	18.9	18.9
7-8 PM	1743	0.0	534	0.0	1499	1743	0	534	6.30	154	63.2	12.2	30.8	20.7	21.4
8-9 PM	1484	0.0	455	0.0	1499	1484	0	455	10.37	252	63.6	9.3	30.8	21.4	22.5
9-10 PM	1195	0.0	367	0.0	1499	1195	0	367	2.80	98	64.1	20.8	35.4	22.0	22.4
10-11 PM	974	0.0	299	0.0	1500	974	0	299	0.52	0	64.6	44.1	41.8	22.5	22.5
11PM-MID	570	0.0	175	0.0	1500	570	0	175	0.48	0	65.3	45.6	43.2	23.5	23.5

"OFF" INDICATES NO ROAD WORK (ALL LANES OPEN TO TRAFFIC)

----- SITE BREAKDOWN DELAYS -----	
BREAKDOWN DURATION (MINS)	0
RANGE OF QUEUE DELAY - MIN	0.0
(VEH-H) MAX	0.0
RANGE OF DIVN DELAY - MIN	0.0
(VEH-H) MAX	0.0
AV BREAKDOWNS PER DAY	0.00
AV QUEUE DELAY/DAY (VEH-H)	0.0
AV DIVN DELAY/DAY (VEH-H)	0.0
AV TOTAL DELAY/DAY (VEH-H)	0.0

----- SITE ACCIDENT DELAYS -----	
ACCIDENT DURATION (MINS)	0
RANGE OF QUEUE DELAY - MIN	0.0
(VEH-H) MAX	0.0
RANGE OF DIVN DELAY - MIN	0.0
(VEH-H) MAX	0.0
AV ACCIDENTS PER DAY	0.00
AV QUEUE DELAY/DAY (VEH-H)	0.0
AV DIVN DELAY/DAY (VEH-H)	0.0
AV TOTAL DELAY/DAY (VEH-H)	0.0

AVERAGE ACCIDENT NUMBERS (PIA/DAY)	
MAIN ROUTE WITHOUT WORKS	0.0083
MAIN ROUTE WITH WORKS	0.0079
DIVERSION	0.1067

PIA: Personal Injury Accidents

IMPACTS ON ROAD USERS	
ROAD USER COSTS PER DAY (DOLLARS)	\$7,548
CONGESTED HOURS PER DAY*	0

*Delays Exceeding 15 Minutes

STH 441: USH 41 TO RACINE ST (WINNEBAGO COUNTY)
NIGHTTIME CLOSURE
DIVERSION ROUTE: PROSPECT AVENUE - STH 47

MAY
 Analyzed for 2009
 Construction Season

GRAPHICAL REPRESENTATION OF TRAFFIC MODEL INPUT AND OUTPUT
MON-THUR EASTBOUND DIRECTION

