

STH 441: USH 41 TO RACINE ST (WINNEBAGO COUNTY) NIGHTTIME CLOSURE DIVERSION ROUTE: PROSPECT AVENUE - STH 47	MAY
	Analyzed for 2009 Construction Season

SUMMARY OF TRAFFIC MODEL OUTPUT

FRIDAY WESTBOUND DIRECTION

TIME OF DAY	FLOWS AND CAPACITY IN VEH/HR						AVERAGE SPEEDS IN MPH								
	MAIN ROUTE		ALTERNATE ROUTE		SITE CAPA CITY	FLOW MAIN ROUTE	FLOW DIVER -TING	TOTAL DIVN FLOW	AV.DEL PER VEH (MINS)	AVERAGE QUEUE (VEH)	MAIN ROUTE		ALTERNATE ROUTE		
	DEMAND FLOW	PCT HEAVY	NORMAL FLOW	PCT HEAVY							WITHOUT WORK ZN	WITH WORK ZN	SITE	WITHOUT WORK ZN	WITH WORK ZN
MID-1 AM	196	0.0	60	0.0	1500	196	0	60	0.44	0	66.0	47.0	44.7	24.4	24.4
1-2 AM	162	0.0	49	0.0	1500	162	0	49	0.44	0	66.1	47.1	44.8	24.5	24.5
2-3 AM	141	0.0	43	0.0	1500	141	0	43	0.44	0	66.1	47.2	44.9	24.5	24.5
3-4 AM	173	0.0	53	0.0	1500	173	0	53	0.44	0	66.1	47.1	44.8	24.5	24.5
4-5 AM	470	0.0	144	0.0	1500	470	0	144	0.47	0	65.5	46.0	43.6	23.7	23.7
5-6 AM	1203	0.0	369	0.0	OFF	1203	0	369	0.00	0	64.1	64.1	64.1	22.0	22.0
6-7 AM	2451	0.0	752	0.0	OFF	2451	0	752	0.00	0	61.4	61.4	61.4	19.1	19.1
7-8 AM	3573	0.0	1095	0.0	OFF	3573	0	1095	0.00	0	49.9	49.9	49.9	16.5	16.5
8-9 AM	2241	0.0	688	0.0	OFF	2241	0	688	0.00	0	62.2	62.2	62.2	19.6	19.6
9-10 AM	1721	0.0	528	0.0	OFF	1721	0	528	0.00	0	63.2	63.2	63.2	20.8	20.8
10-11 AM	1836	0.0	563	0.0	OFF	1836	0	563	0.00	0	63.0	63.0	63.0	20.5	20.5
11A-NOON	1956	0.0	599	0.0	OFF	1956	0	599	0.00	0	62.7	62.7	62.7	20.2	20.2
NOON-1PM	2051	0.0	629	0.0	OFF	2051	0	629	0.00	0	62.5	62.5	62.5	20.0	20.0
1-2 PM	2204	0.0	675	0.0	OFF	2204	0	675	0.00	0	62.3	62.3	62.3	19.7	19.7
2-3 PM	2229	0.0	684	0.0	OFF	2229	0	684	0.00	0	62.2	62.2	62.2	19.6	19.6
3-4 PM	2661	0.0	815	0.0	OFF	2661	0	815	0.00	0	59.2	59.2	59.2	18.6	18.6
4-5 PM	2806	0.0	861	0.0	OFF	2806	0	861	0.00	0	57.8	57.8	57.8	18.3	18.3
5-6 PM	2581	0.0	792	0.0	OFF	2581	0	792	0.00	0	60.1	60.1	60.1	18.8	18.8
6-7 PM	1877	0.0	575	0.0	OFF	1877	0	575	0.00	0	62.9	62.9	62.9	20.4	20.4
7-8 PM	1247	0.0	382	0.0	1500	1247	0	382	0.70	0	64.1	39.5	37.0	21.9	21.9
8-9 PM	1085	0.0	333	0.0	1500	1085	0	333	0.53	0	64.3	43.7	41.4	22.3	22.3
9-10 PM	934	0.0	286	0.0	1500	934	0	286	0.51	0	64.6	44.3	41.9	22.7	22.7
10-11 PM	837	0.0	256	0.0	1500	837	0	256	0.50	0	64.8	44.6	42.2	22.9	22.9
11PM-MID	521	0.0	160	0.0	1500	521	0	160	0.47	0	65.4	45.7	43.4	23.6	23.6

"OFF" INDICATES NO ROAD WORK (ALL LANES OPEN TO TRAFFIC)

----- SITE BREAKDOWN DELAYS -----	
BREAKDOWN DURATION (MINS)	0
RANGE OF QUEUE DELAY - MIN	0.0
(VEH-H) MAX	0.0
RANGE OF DIVN DELAY - MIN	0.0
(VEH-H) MAX	0.0
AV BREAKDOWNS PER DAY	0.00
AV QUEUE DELAY/DAY (VEH-H)	0.0
AV DIVN DELAY/DAY (VEH-H)	0.0
AV TOTAL DELAY/DAY (VEH-H)	0.0

----- SITE ACCIDENT DELAYS -----	
ACCIDENT DURATION (MINS)	0
RANGE OF QUEUE DELAY - MIN	0.0
(VEH-H) MAX	0.0
RANGE OF DIVN DELAY - MIN	0.0
(VEH-H) MAX	0.0
AV ACCIDENTS PER DAY	0.00
AV QUEUE DELAY/DAY (VEH-H)	0.0
AV DIVN DELAY/DAY (VEH-H)	0.0
AV TOTAL DELAY/DAY (VEH-H)	0.0

AVERAGE ACCIDENT NUMBERS (PIA/DAY)	
MAIN ROUTE WITHOUT WORKS	0.0071
MAIN ROUTE WITH WORKS	0.0067
DIVERSION	0.0910

PIA: Personal Injury Accidents

IMPACTS ON ROAD USERS	
ROAD USER COSTS PER DAY (DOLLARS)	\$756
CONGESTED HOURS PER DAY*	0

*Delays Exceeding 15 Minutes

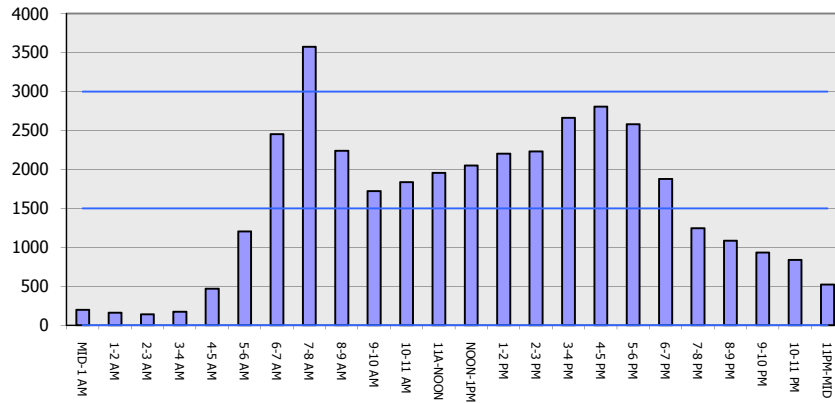
STH 441: USH 41 TO RACINE ST (WINNEBAGO COUNTY)
NIGHTTIME CLOSURE
DIVERSION ROUTE: PROSPECT AVENUE - STH 47

MAY
 Analyzed for 2009
 Construction Season

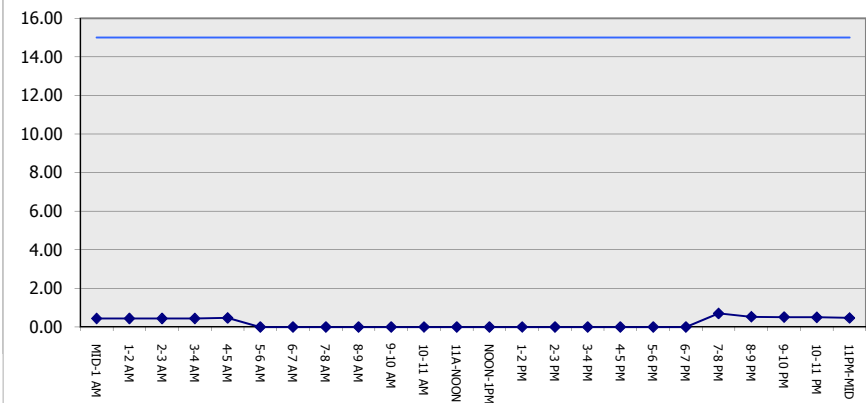
GRAPHICAL REPRESENTATION OF TRAFFIC MODEL INPUT AND OUTPUT

FRIDAY WESTBOUND DIRECTION

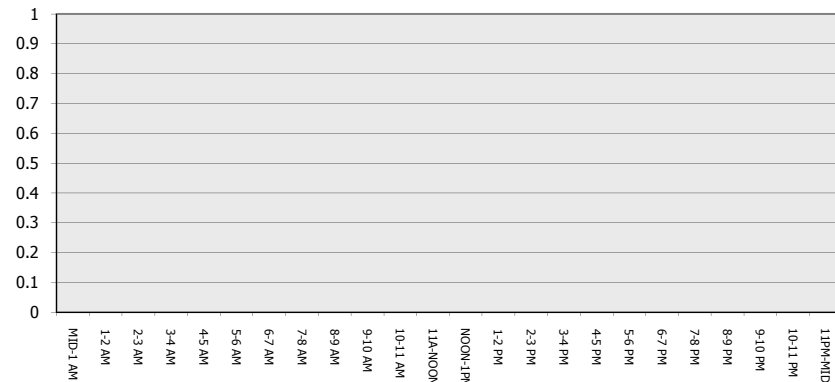
Main Route - Traffic Demand (Vehicles Per Hour)



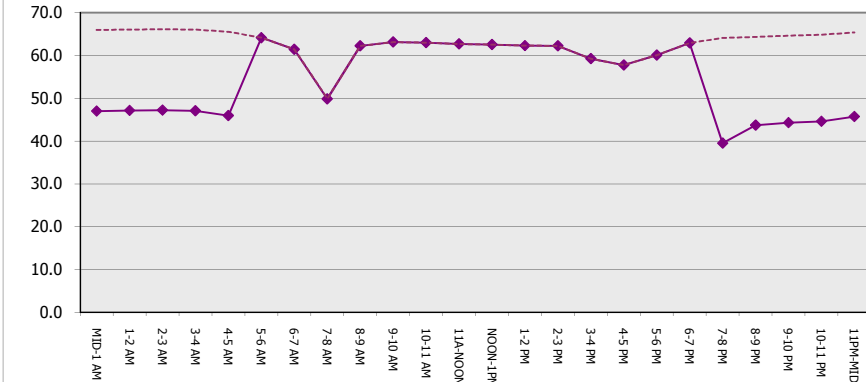
Main Route Average Delay Per Vehicle (Minutes)



Main Route - Average Queue Length (Vehicles)



Main Route - Average Speed (MPH)



STH 441: USH 41 TO RACINE ST (WINNEBAGO COUNTY) NIGHTTIME CLOSURE DIVERSION ROUTE: PROSPECT AVENUE - STH 47	MAY
	Analyzed for 2009 Construction Season

SUMMARY OF TRAFFIC MODEL OUTPUT	
FRIDAY	EASTBOUND DIRECTION

TIME OF DAY	FLOWS AND CAPACITY IN VEH/HR								AVERAGE SPEEDS IN MPH						
	MAIN		DIVERSION		SITE CAPA CITY	FLOW MAIN ROUTE	FLOW DIVER -TING	TOTAL DIVN FLOW	AV.DEL PER VEH (MINS)	AVERAGE QUEUE (VEH)	MAIN ROUTE		SITE	ALTERNATE ROUTE	
	DEMAND FLOW	PCT HEAVY	NORMAL FLOW	PCT HEAVY							WITHOUT WORK ZN	WITH WORK ZN		WITHOUT WORK ZN	WITH WORK ZN
MID-1 AM	326	0.0	100	0.0	1500	326	0	100	0.45	0	65.8	46.5	44.2	24.1	24.1
1-2 AM	200	0.0	62	0.0	1500	200	0	62	0.44	0	66.0	46.9	44.7	24.3	24.3
2-3 AM	173	0.0	53	0.0	1500	173	0	53	0.44	0	66.1	47.1	44.8	24.5	24.5
3-4 AM	140	0.0	43	0.0	1500	140	0	43	0.44	0	66.1	47.2	44.9	24.5	24.5
4-5 AM	188	0.0	58	0.0	1500	188	0	58	0.44	0	66.0	47.0	44.7	24.4	24.4
5-6 AM	722	0.0	221	0.0	OFF	722	0	221	0.00	0	65.0	65.0	65.0	23.2	23.2
6-7 AM	1999	0.0	613	0.0	OFF	1999	0	613	0.00	0	62.7	62.7	62.7	20.1	20.1
7-8 AM	2925	0.0	897	0.0	OFF	2925	0	897	0.00	0	56.5	56.5	56.5	17.9	17.9
8-9 AM	2128	0.0	653	0.0	OFF	2128	0	653	0.00	0	62.4	62.4	62.4	19.8	19.8
9-10 AM	1791	0.0	550	0.0	OFF	1791	0	550	0.00	0	63.0	63.0	63.0	20.6	20.6
10-11 AM	2015	0.0	618	0.0	OFF	2015	0	618	0.00	0	62.7	62.7	62.7	20.1	20.1
11A-NOON	2260	0.0	693	0.0	OFF	2260	0	693	0.00	0	62.2	62.2	62.2	19.5	19.5
NOON-1PM	2357	0.0	723	0.0	OFF	2357	0	723	0.00	0	62.0	62.0	62.0	19.3	19.3
1-2 PM	2554	0.0	783	0.0	OFF	2554	0	783	0.00	0	60.4	60.4	60.4	18.8	18.8
2-3 PM	3385	0.0	1038	0.0	OFF	3385	0	1038	0.00	0	51.8	51.8	51.8	16.9	16.9
3-4 PM	3942	0.0	1209	0.0	OFF	3942	0	1209	0.00	0	46.1	46.1	46.1	15.6	15.6
4-5 PM	4498	0.0	1380	0.0	OFF	4498	0	1380	0.00	0	40.4	40.4	40.4	14.3	14.3
5-6 PM	3876	0.0	1188	0.0	OFF	3876	0	1188	0.00	0	46.8	46.8	46.8	15.7	15.7
6-7 PM	2579	0.0	791	0.0	OFF	2579	0	791	0.00	0	60.1	60.1	60.1	18.8	18.8
7-8 PM	1799	0.0	552	0.0	1499	1799	0	552	7.09	179	63.0	11.6	30.8	20.6	21.4
8-9 PM	1606	0.0	492	0.0	1499	1606	0	492	14.51	365	63.4	8.1	30.8	21.1	22.7
9-10 PM	1375	0.0	421	0.0	1499	1375	0	421	14.05	352	63.8	8.2	30.8	21.6	23.2
10-11 PM	1271	0.0	390	0.0	1500	1271	0	390	7.30	184	64.0	11.4	32.2	21.9	22.6
11PM-MID	768	0.0	236	0.0	1500	768	0	236	0.54	2	65.0	43.5	42.5	23.0	23.0

"OFF" INDICATES NO ROAD WORK (ALL LANES OPEN TO TRAFFIC)

----- SITE BREAKDOWN DELAYS -----	
BREAKDOWN DURATION (MINS)	0
RANGE OF QUEUE DELAY - MIN	0.0
(VEH-H) MAX	0.0
RANGE OF DIVN DELAY - MIN	0.0
(VEH-H) MAX	0.0
AV BREAKDOWNS PER DAY	0.00
AV QUEUE DELAY/DAY (VEH-H)	0.0
AV DIVN DELAY/DAY (VEH-H)	0.0
AV TOTAL DELAY/DAY (VEH-H)	0.0

----- SITE ACCIDENT DELAYS -----	
ACCIDENT DURATION (MINS)	0
RANGE OF QUEUE DELAY - MIN	0.0
(VEH-H) MAX	0.0
RANGE OF DIVN DELAY - MIN	0.0
(VEH-H) MAX	0.0
AV ACCIDENTS PER DAY	0.00
AV QUEUE DELAY/DAY (VEH-H)	0.0
AV DIVN DELAY/DAY (VEH-H)	0.0
AV TOTAL DELAY/DAY (VEH-H)	0.0

AVERAGE ACCIDENT NUMBERS (PIA/DAY)	
MAIN ROUTE WITHOUT WORKS	0.0086
MAIN ROUTE WITH WORKS	0.0080
DIVERSION	0.1099

PIA: Personal Injury Accidents

IMPACTS ON ROAD USERS	
ROAD USER COSTS PER DAY (DOLLARS)	\$15,957
CONGESTED HOURS PER DAY*	0

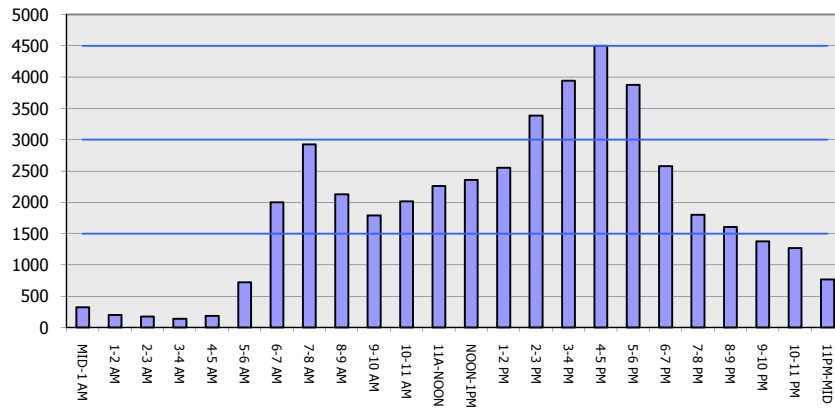
*Delays Exceeding 15 Minutes

STH 441: USH 41 TO RACINE ST (WINNEBAGO COUNTY)
NIGHTTIME CLOSURE
DIVERSION ROUTE: PROSPECT AVENUE - STH 47

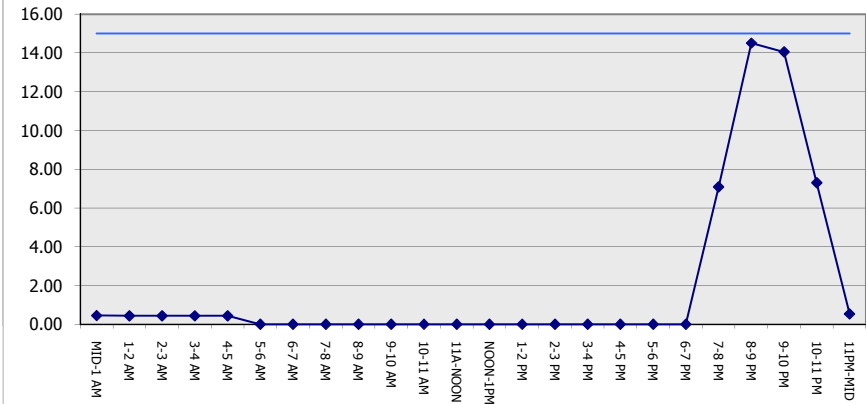
MAY
 Analyzed for 2009
 Construction Season

GRAPHICAL REPRESENTATION OF TRAFFIC MODEL INPUT AND OUTPUT
FRIDAY EASTBOUND DIRECTION

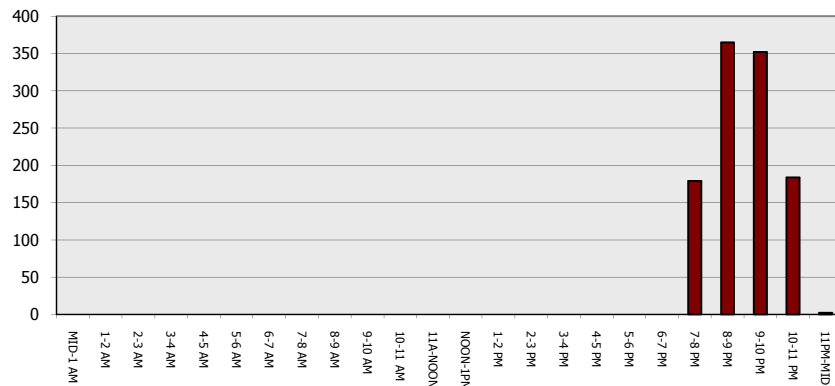
Main Route - Traffic Demand (Vehicles Per Hour)



Main Route Average Delay Per Vehicle (Minutes)



Main Route - Average Queue Length (Vehicles)



Main Route - Average Speed (MPH)

