

STH 441: RACINE ST TO USH 10 (CALUMET AND OUTAGAMIE COUNTIES) NIGHTTIME CLOSURE NO DIVERSION ROUTE (MAX QUEUE METHOD)	OCTOBER
	Analyzed for 2009 Construction Season

SUMMARY OF TRAFFIC MODEL OUTPUT

MON-THUR WESTBOUND DIRECTION

TIME OF DAY	FLOWS AND CAPACITY IN VEH/HR						AVERAGE SPEEDS IN MPH			
	MAIN ROUTE		SITE CAPA CITY	FLOW		AV.DEL PER VEH (MINS)	AVERAGE QUEUE (VEH)	MAIN ROUTE		SITE
	DEMAND FLOW	PCT HEAVY		MAIN ROUTE	'DIVER TED'			WITHOUT WORK ZONE	WITH WORK ZONE	
MID-1 AM	93	0.0	1500	93	0	0.43	0	66.2	56.6	45.1
1-2 AM	74	0.0	1500	74	0	0.43	0	66.3	56.6	45.2
2-3 AM	67	0.0	1500	67	0	0.43	0	66.3	56.7	45.2
3-4 AM	99	0.0	1500	99	0	0.43	0	66.2	56.6	45.1
4-5 AM	303	0.0	1500	303	0	0.45	0	65.8	56.0	44.3
5-6 AM	956	0.0	OFF	956	0	0.00	0	64.6	64.6	64.6
6-7 AM	1779	0.0	OFF	1779	0	0.00	0	63.1	63.1	63.1
7-8 AM	2649	0.0	OFF	2649	0	0.00	0	59.4	59.4	59.4
8-9 AM	1682	0.0	OFF	1682	0	0.00	0	63.3	63.3	63.3
9-10 AM	1178	0.0	OFF	1178	0	0.00	0	64.2	64.2	64.2
10-11 AM	1146	0.0	OFF	1146	0	0.00	0	64.3	64.3	64.3
11AM-NOON	1230	0.0	OFF	1230	0	0.00	0	64.1	64.1	64.1
NOON-1PM	1317	0.0	OFF	1317	0	0.00	0	64.0	64.0	64.0
1-2 PM	1434	0.0	OFF	1434	0	0.00	0	63.7	63.7	63.7
2-3 PM	1484	0.0	OFF	1484	0	0.00	0	63.6	63.6	63.6
3-4 PM	1743	0.0	OFF	1743	0	0.00	0	63.2	63.2	63.2
4-5 PM	1963	0.0	OFF	1963	0	0.00	0	62.7	62.7	62.7
5-6 PM	1881	0.0	OFF	1881	0	0.00	0	62.9	62.9	62.9
6-7 PM	1243	0.0	OFF	1243	0	0.00	0	64.1	64.1	64.1
7-8 PM	776	0.0	1500	776	0	0.50	0	65.0	54.5	42.5
8-9 PM	638	0.0	1500	638	0	0.48	0	65.2	54.9	43.0
9-10 PM	617	0.0	1500	617	0	0.48	0	65.3	55.0	43.0
10-11 PM	406	0.0	1500	406	0	0.46	0	65.6	55.6	43.8
11PM-MID	213	0.0	1500	213	0	0.44	0	66.0	56.2	44.6

"OFF" INDICATES NO ROAD WORK (ALL LANES OPEN TO TRAFFIC)

----- SITE BREAKDOWN DELAYS -----	
BREAKDOWN DURATION (MINS)	0
RANGE OF QUEUE DELAY - MIN (VEH-H) MAX	0.0
AV BREAKDOWNS PER DAY	0.00
AV QUEUE DELAY/DAY (VEH-H)	0.0
AV TOTAL DELAY/DAY (VEH-H)	0.0

----- SITE ACCIDENT DELAYS -----	
BREAKDOWN DURATION (MINS)	0
RANGE OF QUEUE DELAY - MIN (VEH-H) MAX	0
AV BREAKDOWNS PER DAY	0
AV QUEUE DELAY/DAY (VEH-H)	0
AV TOTAL DELAY/DAY (VEH-H)	0

AVERAGE ACCIDENT NUMBERS (PIA/DAY)	
MAIN ROUTE WITHOUT WORKS	0.0111
MAIN ROUTE WITH WORKS	0.0109
'DIVERSION'	0.0000
<small>PIA: Personal Injury Accidents</small>	
IMPACTS ON ROAD USERS	
ROAD USER COSTS PER DAY	\$323
CONGESTED HOURS PER DAY*	0

*Delays Exceeding User-Specified Maximum

STH 441: RACINE ST TO USH 10 (CALUMET AND OUTAGAMIE COUNTIES)
NIGHTTIME CLOSURE
NO DIVERSION ROUTE (MAX QUEUE METHOD)

OCTOBER

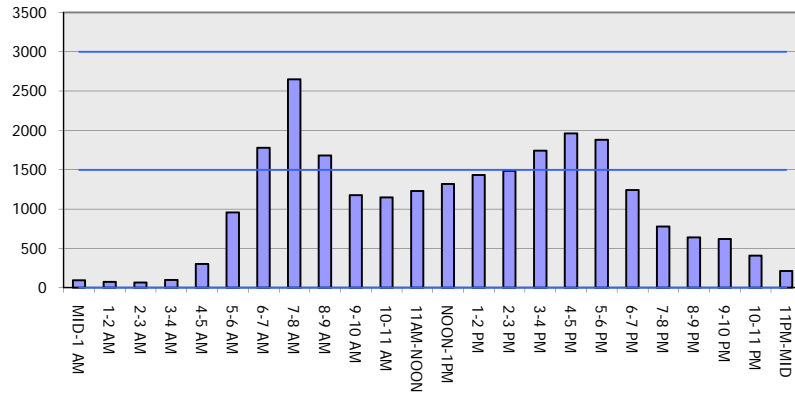
Analyzed for 2009
 Construction Season

GRAPHICAL REPRESENTATION OF TRAFFIC MODEL INPUT AND OUTPUT

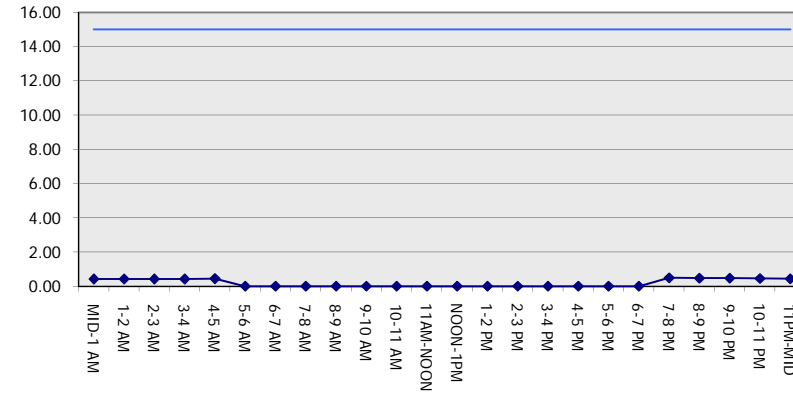
MON-THUR

WESTBOUND DIRECTION

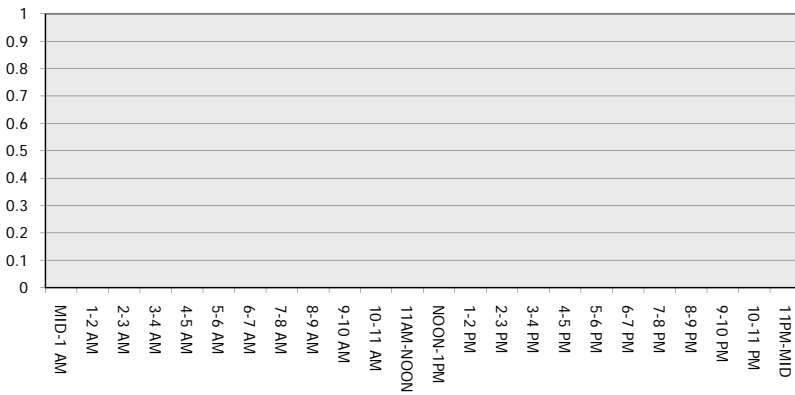
Main Route - Traffic Demand (Vehicles Per Hour)



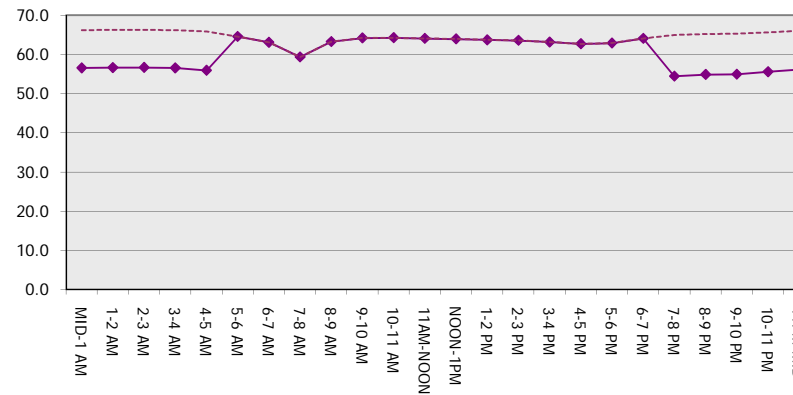
Main Route Average Delay Per Vehicle (Minutes)



Main Route - Average Queue Length (Vehicles)



Main Route - Average Speed (MPH)



STH 441: RACINE ST TO USH 10 (CALUMET AND OUTAGAMIE COUNTIES) NIGHTTIME CLOSURE NO DIVERSION ROUTE (MAX QUEUE METHOD)	OCTOBER
	Analyzed for 2009 Construction Season

SUMMARY OF TRAFFIC MODEL OUTPUT

MON-THUR EASTBOUND DIRECTION

TIME OF DAY	FLOWS AND CAPACITY IN VEH/HR						AVERAGE SPEEDS IN MPH			
	MAIN ROUTE		SITE CAPA CITY	FLOW		AV.DEL PER VEH (MINS)	AVERAGE QUEUE (VEH)	MAIN ROUTE		SITE
	DEMAND FLOW	PCT HEAVY		MAIN ROUTE	'DIVER TED'			WITHOUT WORK ZONE	WITH WORK ZONE	
MID-1 AM	219	0.0	1500	219	0	0.44	0	66.0	56.2	44.6
1-2 AM	146	0.0	1500	146	0	0.44	0	66.1	56.4	44.9
2-3 AM	127	0.0	1500	127	0	0.43	0	66.1	56.5	45.0
3-4 AM	69	0.0	1500	69	0	0.43	0	66.3	56.7	45.2
4-5 AM	147	0.0	1500	147	0	0.44	0	66.1	56.4	44.9
5-6 AM	522	0.0	OFF	522	0	0.00	0	65.4	65.4	65.4
6-7 AM	1380	0.0	OFF	1380	0	0.00	0	63.8	63.8	63.8
7-8 AM	2232	0.0	OFF	2232	0	0.00	0	62.2	62.2	62.2
8-9 AM	1592	0.0	OFF	1592	0	0.00	0	63.4	63.4	63.4
9-10 AM	1245	0.0	OFF	1245	0	0.00	0	64.1	64.1	64.1
10-11 AM	1291	0.0	OFF	1291	0	0.00	0	64.0	64.0	64.0
11AM-NOON	1409	0.0	OFF	1409	0	0.00	0	63.8	63.8	63.8
NOON-1PM	1537	0.0	OFF	1537	0	0.00	0	63.5	63.5	63.5
1-2 PM	1570	0.0	OFF	1570	0	0.00	0	63.5	63.5	63.5
2-3 PM	2095	0.0	OFF	2095	0	0.00	0	62.5	62.5	62.5
3-4 PM	2595	0.0	OFF	2595	0	0.00	0	59.9	59.9	59.9
4-5 PM	3142	0.0	OFF	3142	0	0.00	0	54.3	54.3	54.3
5-6 PM	2770	0.0	OFF	2770	0	0.00	0	58.1	58.1	58.1
6-7 PM	1791	0.0	OFF	1791	0	0.00	0	63.0	63.0	63.0
7-8 PM	1113	0.0	1500	1113	0	0.53	0	64.3	53.5	41.3
8-9 PM	941	0.0	1500	941	0	0.51	0	64.6	54.0	41.9
9-10 PM	752	0.0	1500	752	0	0.50	0	65.0	54.5	42.5
10-11 PM	618	0.0	1500	618	0	0.48	0	65.2	55.0	43.0
11PM-MID	379	0.0	1500	379	0	0.46	0	65.7	55.7	44.0

"OFF" INDICATES NO ROAD WORK (ALL LANES OPEN TO TRAFFIC)

----- SITE BREAKDOWN DELAYS -----	
BREAKDOWN DURATION (MINS)	0
RANGE OF QUEUE DELAY - MIN (VEH-H) MAX	0.0
AV BREAKDOWNS PER DAY	0.00
AV QUEUE DELAY/DAY (VEH-H)	0.0
AV TOTAL DELAY/DAY (VEH-H)	0.0

----- SITE ACCIDENT DELAYS -----	
BREAKDOWN DURATION (MINS)	0
RANGE OF QUEUE DELAY - MIN (VEH-H) MAX	0
AV BREAKDOWNS PER DAY	0
AV QUEUE DELAY/DAY (VEH-H)	0
AV TOTAL DELAY/DAY (VEH-H)	0

AVERAGE ACCIDENT NUMBERS (PIA/DAY)	
MAIN ROUTE WITHOUT WORKS	0.0132
MAIN ROUTE WITH WORKS	0.0129
'DIVERSION'	0.0000

PIA: Personal Injury Accidents

ECONOMIC IMPACT ON ROAD USERS	
ROAD USER COSTS PER DAY	\$464
CONGESTED HOURS PER DAY*	0

*Delays Exceeding User-Specified Maximum

**STH 441: RACINE ST TO USH 10 (CALUMET AND OUTAGAMIE COUNTIES)
 NIGHTTIME CLOSURE
 NO DIVERSION ROUTE (MAX QUEUE METHOD)**

OCTOBER

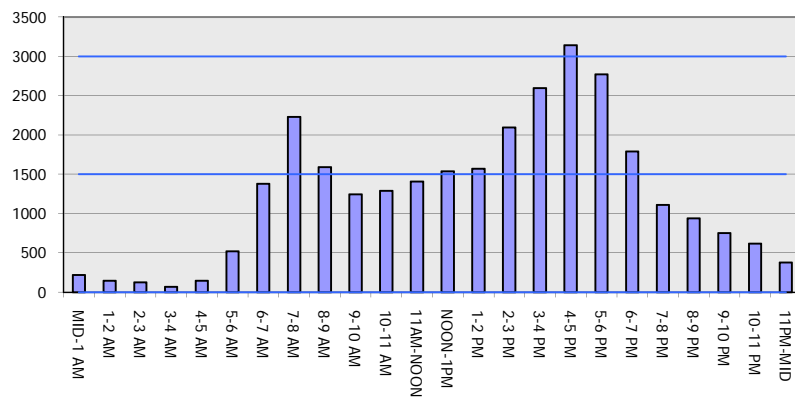
Analyzed for 2009
 Construction Season

GRAPHICAL REPRESENTATION OF TRAFFIC MODEL INPUT AND OUTPUT

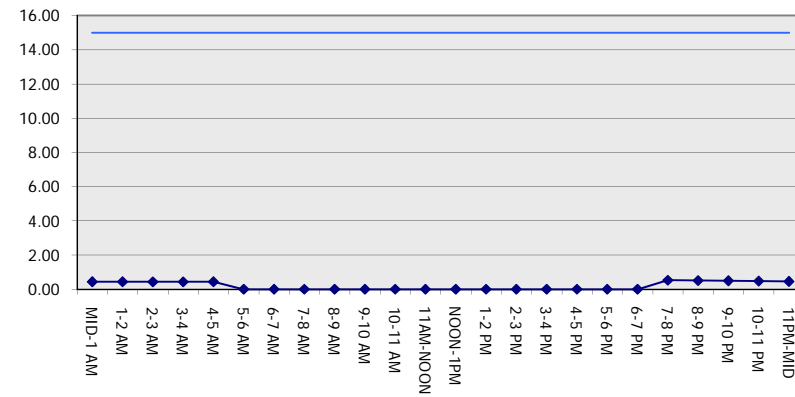
MON-THUR

EASTBOUND DIRECTION

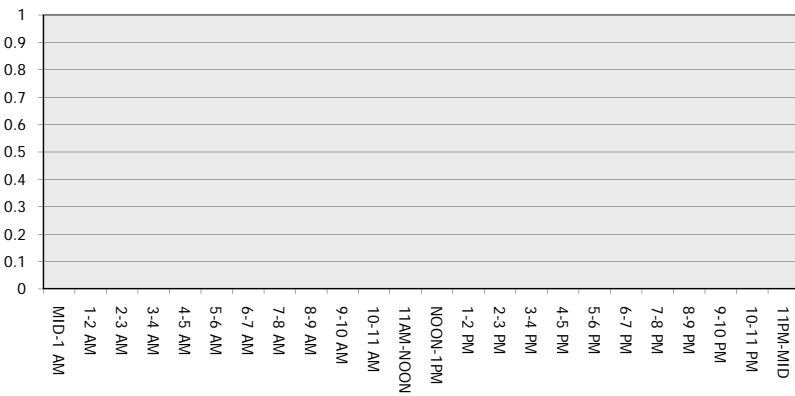
Main Route - Traffic Demand (Vehicles Per Hour)



Main Route Average Delay Per Vehicle (Minutes)



Main Route - Average Queue Length (Vehicles)



Main Route - Average Speed (MPH)

