

STH 441: RACINE ST TO USH 10 (CALUMET AND OUTAGAMIE COUNTIES) NIGHTTIME CLOSURE NO DIVERSION ROUTE (MAX QUEUE METHOD)	OCTOBER
	Analyzed for 2009 Construction Season

SUMMARY OF TRAFFIC MODEL OUTPUT

FRIDAY WESTBOUND DIRECTION

TIME OF DAY	FLOWS AND CAPACITY IN VEH/HR						AVERAGE SPEEDS IN MPH			
	MAIN ROUTE		SITE CAPA CITY	FLOW		AV.DEL PER VEH (MINS)	AVERAGE QUEUE (VEH)	MAIN ROUTE		SITE
	DEMAND FLOW	PCT HEAVY		MAIN ROUTE	'DIVER TED'			WITHOUT WORK ZONE	WITH WORK ZONE	
MID-1 AM	118	0.0	1500	118	0	0.43	0	66.1	56.5	45.0
1-2 AM	94	0.0	1500	94	0	0.43	0	66.2	56.6	45.1
2-3 AM	92	0.0	1500	92	0	0.43	0	66.2	56.6	45.1
3-4 AM	94	0.0	1500	94	0	0.43	0	66.2	56.6	45.1
4-5 AM	334	0.0	1500	334	0	0.45	0	65.8	55.8	44.2
5-6 AM	844	0.0	OFF	844	0	0.00	0	64.8	64.8	64.8
6-7 AM	1653	0.0	OFF	1653	0	0.00	0	63.3	63.3	63.3
7-8 AM	2546	0.0	OFF	2546	0	0.00	0	60.4	60.4	60.4
8-9 AM	1670	0.0	OFF	1670	0	0.00	0	63.3	63.3	63.3
9-10 AM	1215	0.0	OFF	1215	0	0.00	0	64.1	64.1	64.1
10-11 AM	1243	0.0	OFF	1243	0	0.00	0	64.1	64.1	64.1
11AM-NOON	1392	0.0	OFF	1392	0	0.00	0	63.8	63.8	63.8
NOON-1PM	1527	0.0	OFF	1527	0	0.00	0	63.5	63.5	63.5
1-2 PM	1613	0.0	OFF	1613	0	0.00	0	63.4	63.4	63.4
2-3 PM	1677	0.0	OFF	1677	0	0.00	0	63.3	63.3	63.3
3-4 PM	1967	0.0	OFF	1967	0	0.00	0	62.7	62.7	62.7
4-5 PM	2046	0.0	OFF	2046	0	0.00	0	62.6	62.6	62.6
5-6 PM	1887	0.0	OFF	1887	0	0.00	0	62.8	62.8	62.8
6-7 PM	1336	0.0	OFF	1336	0	0.00	0	63.9	63.9	63.9
7-8 PM	859	0.0	1500	859	0	0.51	0	64.8	54.2	42.2
8-9 PM	640	0.0	1500	640	0	0.48	0	65.2	54.9	43.0
9-10 PM	695	0.0	1500	695	0	0.49	0	65.1	54.7	42.8
10-11 PM	535	0.0	1500	535	0	0.47	0	65.4	55.2	43.3
11PM-MID	379	0.0	1500	379	0	0.46	0	65.7	55.7	44.0

"OFF" INDICATES NO ROAD WORK (ALL LANES OPEN TO TRAFFIC)

----- SITE BREAKDOWN DELAYS -----	
BREAKDOWN DURATION (MINS)	0
RANGE OF QUEUE DELAY - MIN (VEH-H) MAX	0.0
AV BREAKDOWNS PER DAY	0.00
AV QUEUE DELAY/DAY (VEH-H)	0.0
AV TOTAL DELAY/DAY (VEH-H)	0.0

----- SITE ACCIDENT DELAYS -----	
BREAKDOWN DURATION (MINS)	0
RANGE OF QUEUE DELAY - MIN (VEH-H) MAX	0
AV BREAKDOWNS PER DAY	0
AV QUEUE DELAY/DAY (VEH-H)	0
AV TOTAL DELAY/DAY (VEH-H)	0

AVERAGE ACCIDENT NUMBERS (PIA/DAY)	
MAIN ROUTE WITHOUT WORKS	0.0118
MAIN ROUTE WITH WORKS	0.0115
'DIVERSION'	0.0000
<small>PIA: Personal Injury Accidents</small>	
IMPACTS ON ROAD USERS	
ROAD USER COSTS PER DAY	\$397
CONGESTED HOURS PER DAY*	0

*Delays Exceeding User-Specified Maximum

STH 441: RACINE ST TO USH 10 (CALUMET AND OUTAGAMIE COUNTIES)
NIGHTTIME CLOSURE
NO DIVERSION ROUTE (MAX QUEUE METHOD)

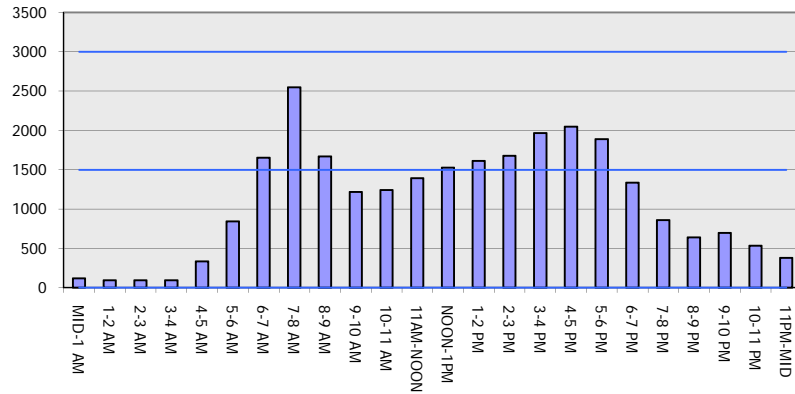
OCTOBER

Analyzed for 2009
 Construction Season

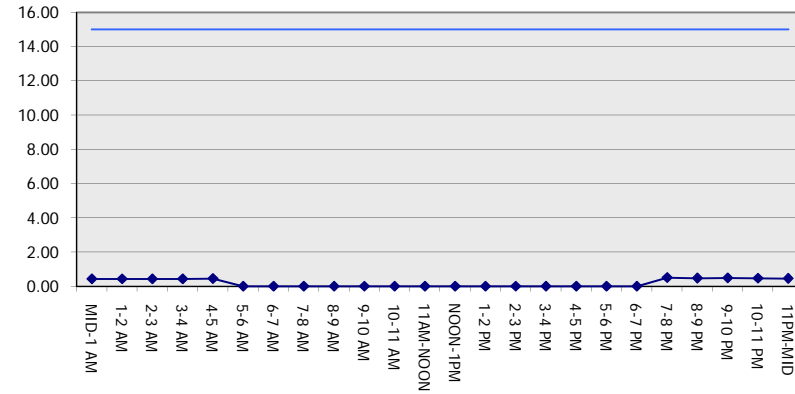
GRAPHICAL REPRESENTATION OF TRAFFIC MODEL INPUT AND OUTPUT

FRIDAY WESTBOUND DIRECTION

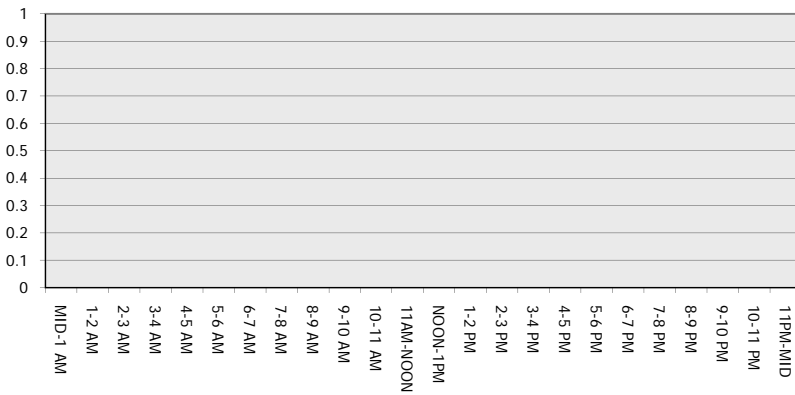
Main Route - Traffic Demand (Vehicles Per Hour)



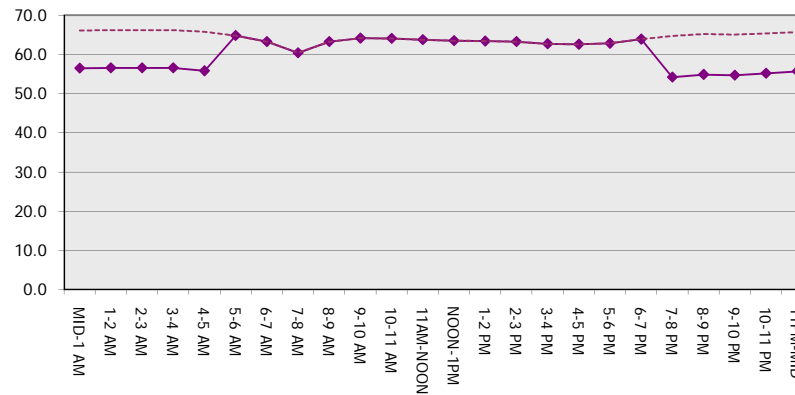
Main Route Average Delay Per Vehicle (Minutes)



Main Route - Average Queue Length (Vehicles)



Main Route - Average Speed (MPH)



STH 441: RACINE ST TO USH 10 (CALUMET AND OUTAGAMIE COUNTIES) NIGHTTIME CLOSURE NO DIVERSION ROUTE (MAX QUEUE METHOD)	OCTOBER
	Analyzed for 2009 Construction Season

SUMMARY OF TRAFFIC MODEL OUTPUT

FRIDAY EASTBOUND DIRECTION

TIME OF DAY	FLOWS AND CAPACITY IN VEH/HR						AVERAGE SPEEDS IN MPH			
	MAIN ROUTE		SITE CAPA CITY	FLOW		AV.DEL PER VEH (MINS)	AVERAGE QUEUE (VEH)	MAIN ROUTE		SITE
	DEMAND FLOW	PCT HEAVY		MAIN ROUTE	'DIVER TED'			WITHOUT WORK ZONE	WITH WORK ZONE	
MID-1 AM	261	0.0	1500	261	0	0.45	0	65.9	56.1	44.5
1-2 AM	171	0.0	1500	171	0	0.44	0	66.1	56.3	44.8
2-3 AM	137	0.0	1500	137	0	0.44	0	66.1	56.4	45.0
3-4 AM	78	0.0	1500	78	0	0.43	0	66.3	56.6	45.2
4-5 AM	153	0.0	1500	153	0	0.44	0	66.1	56.4	44.9
5-6 AM	525	0.0	OFF	525	0	0.00	0	65.4	65.4	65.4
6-7 AM	1347	0.0	OFF	1347	0	0.00	0	63.9	63.9	63.9
7-8 AM	2128	0.0	OFF	2128	0	0.00	0	62.4	62.4	62.4
8-9 AM	1648	0.0	OFF	1648	0	0.00	0	63.3	63.3	63.3
9-10 AM	1338	0.0	OFF	1338	0	0.00	0	63.9	63.9	63.9
10-11 AM	1453	0.0	OFF	1453	0	0.00	0	63.7	63.7	63.7
11AM-NOON	1688	0.0	OFF	1688	0	0.00	0	63.2	63.2	63.2
NOON-1PM	1779	0.0	OFF	1779	0	0.00	0	63.1	63.1	63.1
1-2 PM	1897	0.0	OFF	1897	0	0.00	0	62.8	62.8	62.8
2-3 PM	2414	0.0	OFF	2414	0	0.00	0	61.8	61.8	61.8
3-4 PM	2812	0.0	OFF	2812	0	0.00	0	57.7	57.7	57.7
4-5 PM	3213	0.0	OFF	3213	0	0.00	0	53.6	53.6	53.6
5-6 PM	2776	0.0	OFF	2776	0	0.00	0	58.1	58.1	58.1
6-7 PM	1955	0.0	OFF	1955	0	0.00	0	62.7	62.7	62.7
7-8 PM	1246	0.0	1500	1246	0	0.70	0	64.1	50.6	37.1
8-9 PM	1042	0.0	1500	1042	0	0.52	0	64.5	53.7	41.5
9-10 PM	930	0.0	1500	930	0	0.51	0	64.6	54.0	41.9
10-11 PM	842	0.0	1500	842	0	0.50	0	64.8	54.3	42.2
11PM-MID	559	0.0	1500	559	0	0.48	0	65.3	55.1	43.3

"OFF" INDICATES NO ROAD WORK (ALL LANES OPEN TO TRAFFIC)

----- SITE BREAKDOWN DELAYS -----	
BREAKDOWN DURATION (MINS)	0
RANGE OF QUEUE DELAY - MIN (VEH-H) MAX	0.0
AV BREAKDOWNS PER DAY	0.00
AV QUEUE DELAY/DAY (VEH-H)	0.0
AV TOTAL DELAY/DAY (VEH-H)	0.0

----- SITE ACCIDENT DELAYS -----	
BREAKDOWN DURATION (MINS)	0
RANGE OF QUEUE DELAY - MIN (VEH-H) MAX	0
AV BREAKDOWNS PER DAY	0
AV QUEUE DELAY/DAY (VEH-H)	0
AV TOTAL DELAY/DAY (VEH-H)	0

AVERAGE ACCIDENT NUMBERS (PIA/DAY)	
MAIN ROUTE WITHOUT WORKS	0.0144
MAIN ROUTE WITH WORKS	0.0141
'DIVERSION'	0.0000

PIA: Personal Injury Accidents

ECONOMIC IMPACT ON ROAD USERS	
ROAD USER COSTS PER DAY	\$636
CONGESTED HOURS PER DAY*	0

*Delays Exceeding User-Specified Maximum

STH 441: RACINE ST TO USH 10 (CALUMET AND OUTAGAMIE COUNTIES)
NIGHTTIME CLOSURE
NO DIVERSION ROUTE (MAX QUEUE METHOD)

OCTOBER

Analyzed for 2009
 Construction Season

GRAPHICAL REPRESENTATION OF TRAFFIC MODEL INPUT AND OUTPUT
FRIDAY EASTBOUND DIRECTION

