

STH 441: RACINE ST TO USH 10 (CALUMET AND OUTAGAMIE COUNTIES) NIGHTTIME CLOSURE NO DIVERSION ROUTE (MAX QUEUE METHOD)	AUGUST
	Analyzed for 2009 Construction Season

SUMMARY OF TRAFFIC MODEL OUTPUT

MON-THUR WESTBOUND DIRECTION

TIME OF DAY	FLOWS AND CAPACITY IN VEH/HR						AVERAGE SPEEDS IN MPH				
	MAIN ROUTE		SITE CAPA CITY	FLOW		AV.DEL PER VEH (MINS)	AVERAGE QUEUE (VEH)	MAIN ROUTE		SITE	
	DEMAND FLOW	PCT HEAVY		MAIN ROUTE	'DIVER TED'			WITHOUT WORK ZONE	WITH WORK ZONE		
MID-1 AM	133	0.0	1500	133	0	0.44	0	66.1	56.4	45.0	
1-2 AM	91	0.0	1500	91	0	0.43	0	66.2	56.6	45.1	
2-3 AM	78	0.0	1500	78	0	0.43	0	66.3	56.6	45.2	
3-4 AM	118	0.0	1500	118	0	0.43	0	66.1	56.5	45.0	
4-5 AM	354	0.0	1500	354	0	0.46	0	65.7	55.8	44.1	
5-6 AM	1004	0.0	OFF	1004	0	0.00	0	64.5	64.5	64.5	
6-7 AM	1821	0.0	OFF	1821	0	0.00	0	63.0	63.0	63.0	
7-8 AM	2445	0.0	OFF	2445	0	0.00	0	61.5	61.5	61.5	
8-9 AM	1514	0.0	OFF	1514	0	0.00	0	63.6	63.6	63.6	
9-10 AM	1203	0.0	OFF	1203	0	0.00	0	64.1	64.1	64.1	
10-11 AM	1226	0.0	OFF	1226	0	0.00	0	64.1	64.1	64.1	
11AM-NOON	1304	0.0	OFF	1304	0	0.00	0	64.0	64.0	64.0	
NOON-1PM	1410	0.0	OFF	1410	0	0.00	0	63.8	63.8	63.8	
1-2 PM	1537	0.0	OFF	1537	0	0.00	0	63.5	63.5	63.5	
2-3 PM	1520	0.0	OFF	1520	0	0.00	0	63.5	63.5	63.5	
3-4 PM	1652	0.0	OFF	1652	0	0.00	0	63.3	63.3	63.3	
4-5 PM	1923	0.0	OFF	1923	0	0.00	0	62.8	62.8	62.8	
5-6 PM	1884	0.0	OFF	1884	0	0.00	0	62.8	62.8	62.8	
6-7 PM	1253	0.0	OFF	1253	0	0.00	0	64.0	64.0	64.0	
7-8 PM	839	0.0	1500	839	0	0.50	0	64.8	54.3	42.2	
8-9 PM	743	0.0	1500	743	0	0.49	0	65.0	54.6	42.6	
9-10 PM	602	0.0	1500	602	0	0.48	0	65.3	55.0	43.1	
10-11 PM	487	0.0	1500	487	0	0.47	0	65.5	55.3	43.5	
11PM-MID	322	0.0	1500	322	0	0.45	0	65.8	55.9	44.2	

"OFF" INDICATES NO ROAD WORK (ALL LANES OPEN TO TRAFFIC)

----- SITE BREAKDOWN DELAYS -----	
BREAKDOWN DURATION (MINS)	0
RANGE OF QUEUE DELAY - MIN (VEH-H) MAX	0.0
AV BREAKDOWNS PER DAY	0.00
AV QUEUE DELAY/DAY (VEH-H)	0.0
AV TOTAL DELAY/DAY (VEH-H)	0.0

----- SITE ACCIDENT DELAYS -----	
BREAKDOWN DURATION (MINS)	0
RANGE OF QUEUE DELAY - MIN (VEH-H) MAX	0
AV BREAKDOWNS PER DAY	0
AV QUEUE DELAY/DAY (VEH-H)	0
AV TOTAL DELAY/DAY (VEH-H)	0

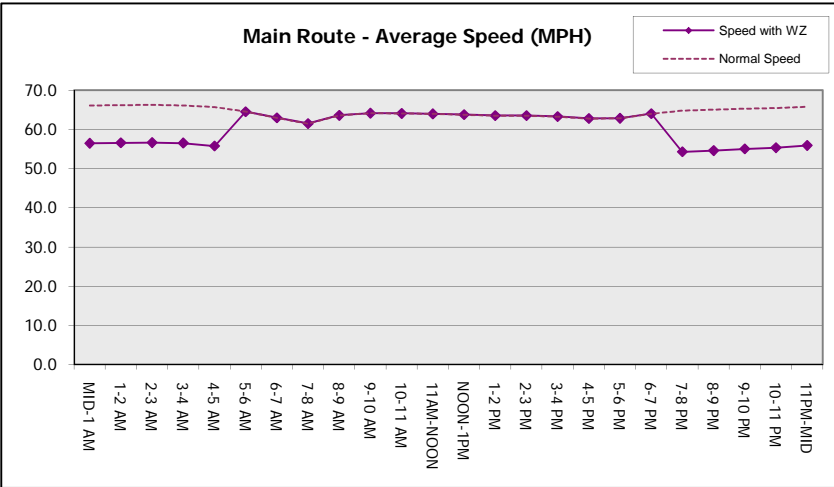
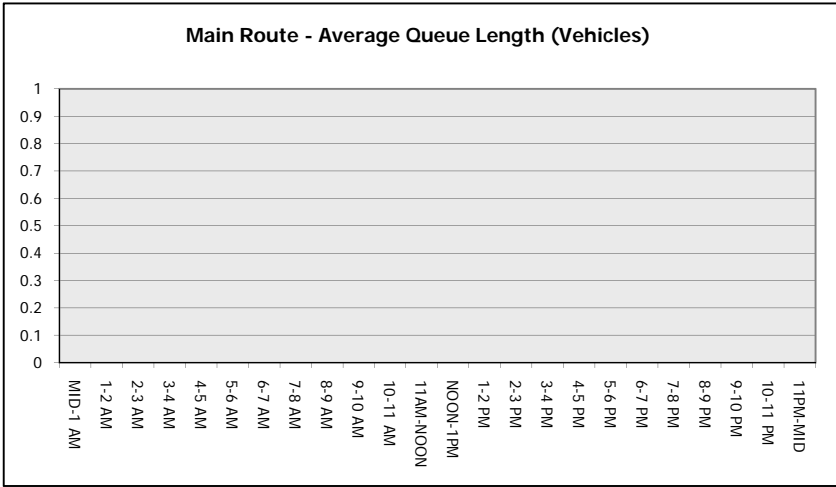
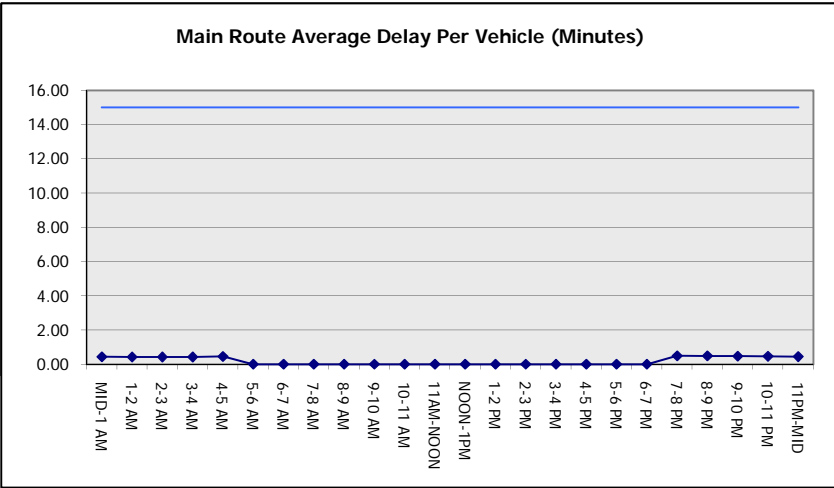
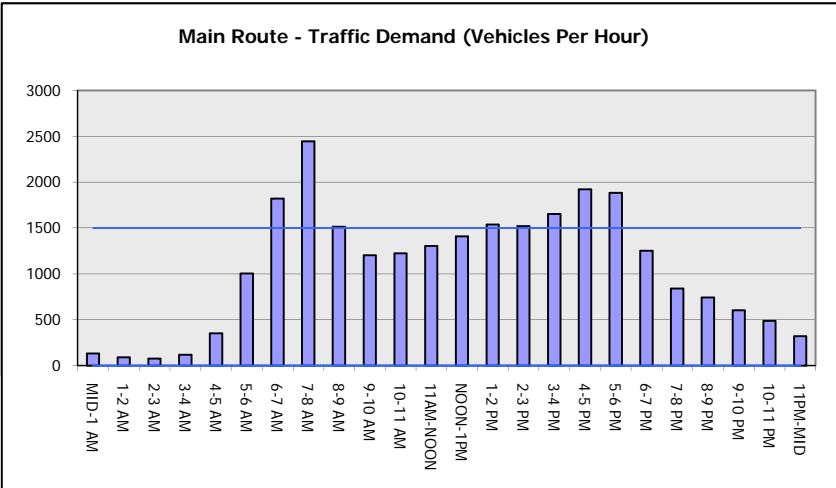
AVERAGE ACCIDENT NUMBERS (PIA/DAY)	
MAIN ROUTE WITHOUT WORKS	0.0114
MAIN ROUTE WITH WORKS	0.0111
'DIVERSION'	0.0000
PIA: Personal Injury Accidents	
IMPACTS ON ROAD USERS	
ROAD USER COSTS PER DAY	\$378
CONGESTED HOURS PER DAY*	0

*Delays Exceeding User-Specified Maximum

STH 441: RACINE ST TO USH 10 (CALUMET AND OUTAGAMIE COUNTIES)
NIGHTTIME CLOSURE
NO DIVERSION ROUTE (MAX QUEUE METHOD)

AUGUST
 Analyzed for 2009
 Construction Season

GRAPHICAL REPRESENTATION OF TRAFFIC MODEL INPUT AND OUTPUT
MON-THUR WESTBOUND DIRECTION



STH 441: RACINE ST TO USH 10 (CALUMET AND OUTAGAMIE COUNTIES) NIGHTTIME CLOSURE NO DIVERSION ROUTE (MAX QUEUE METHOD)	AUGUST
	Analyzed for 2009 Construction Season

SUMMARY OF TRAFFIC MODEL OUTPUT

MON-THUR EASTBOUND DIRECTION

TIME OF DAY	FLOWS AND CAPACITY IN VEH/HR						AVERAGE SPEEDS IN MPH			
	MAIN ROUTE		SITE CAPA CITY	FLOW		AV.DEL PER VEH (MINS)	AVERAGE QUEUE (VEH)	MAIN ROUTE		SITE
	DEMAND FLOW	PCT HEAVY		MAIN ROUTE	'DIVER TED'			WITHOUT WORK ZONE	WITH WORK ZONE	
MID-1 AM	239	0.0	1500	239	0	0.45	0	66.0	56.1	44.5
1-2 AM	153	0.0	1500	153	0	0.44	0	66.1	56.4	44.9
2-3 AM	131	0.0	1500	131	0	0.44	0	66.1	56.4	45.0
3-4 AM	92	0.0	1500	92	0	0.43	0	66.2	56.6	45.1
4-5 AM	168	0.0	1500	168	0	0.44	0	66.1	56.3	44.8
5-6 AM	588	0.0	OFF	588	0	0.00	0	65.3	65.3	65.3
6-7 AM	1480	0.0	OFF	1480	0	0.00	0	63.7	63.7	63.7
7-8 AM	2059	0.0	OFF	2059	0	0.00	0	62.5	62.5	62.5
8-9 AM	1473	0.0	OFF	1473	0	0.00	0	63.7	63.7	63.7
9-10 AM	1286	0.0	OFF	1286	0	0.00	0	64.0	64.0	64.0
10-11 AM	1317	0.0	OFF	1317	0	0.00	0	64.0	64.0	64.0
11AM-NOON	1463	0.0	OFF	1463	0	0.00	0	63.7	63.7	63.7
NOON-1PM	1554	0.0	OFF	1554	0	0.00	0	63.5	63.5	63.5
1-2 PM	1644	0.0	OFF	1644	0	0.00	0	63.3	63.3	63.3
2-3 PM	2184	0.0	OFF	2184	0	0.00	0	62.3	62.3	62.3
3-4 PM	2483	0.0	OFF	2483	0	0.00	0	61.0	61.0	61.0
4-5 PM	3202	0.0	OFF	3202	0	0.00	0	53.7	53.7	53.7
5-6 PM	2759	0.0	OFF	2759	0	0.00	0	58.2	58.2	58.2
6-7 PM	1803	0.0	OFF	1803	0	0.00	0	63.0	63.0	63.0
7-8 PM	1264	0.0	1500	1264	0	0.72	0	64.0	50.2	36.5
8-9 PM	1175	0.0	1500	1175	0	0.60	0	64.2	52.2	39.3
9-10 PM	933	0.0	1500	933	0	0.51	0	64.6	54.0	41.9
10-11 PM	786	0.0	1500	786	0	0.50	0	64.9	54.5	42.4
11PM-MID	504	0.0	1500	504	0	0.47	0	65.5	55.3	43.5

"OFF" INDICATES NO ROAD WORK (ALL LANES OPEN TO TRAFFIC)

----- SITE BREAKDOWN DELAYS -----	
BREAKDOWN DURATION (MINS)	0
RANGE OF QUEUE DELAY - MIN (VEH-H) MAX	0.0
AV BREAKDOWNS PER DAY	0.00
AV QUEUE DELAY/DAY (VEH-H)	0.0
AV TOTAL DELAY/DAY (VEH-H)	0.0

----- SITE ACCIDENT DELAYS -----	
BREAKDOWN DURATION (MINS)	0
RANGE OF QUEUE DELAY - MIN (VEH-H) MAX	0
AV BREAKDOWNS PER DAY	0
AV QUEUE DELAY/DAY (VEH-H)	0
AV TOTAL DELAY/DAY (VEH-H)	0

AVERAGE ACCIDENT NUMBERS (PIA/DAY)	
MAIN ROUTE WITHOUT WORKS	0.0137
MAIN ROUTE WITH WORKS	0.0133
'DIVERSION'	0.0000

PIA: Personal Injury Accidents

ECONOMIC IMPACT ON ROAD USERS	
ROAD USER COSTS PER DAY	\$647
CONGESTED HOURS PER DAY*	0

*Delays Exceeding User-Specified Maximum

STH 441: RACINE ST TO USH 10 (CALUMET AND OUTAGAMIE COUNTIES)
NIGHTTIME CLOSURE
NO DIVERSION ROUTE (MAX QUEUE METHOD)

AUGUST

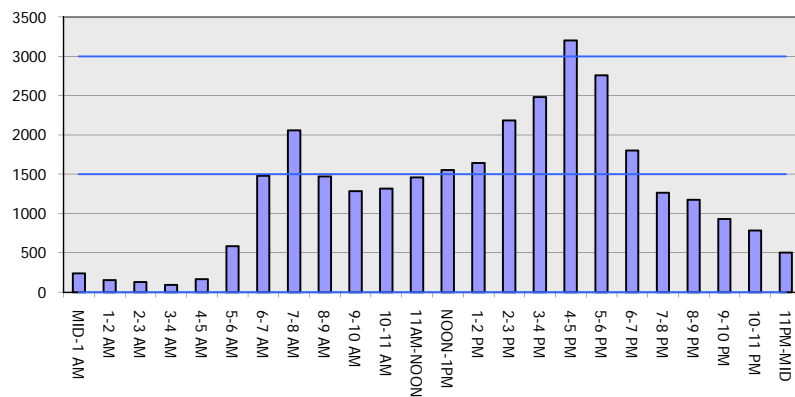
Analyzed for 2009
 Construction Season

GRAPHICAL REPRESENTATION OF TRAFFIC MODEL INPUT AND OUTPUT

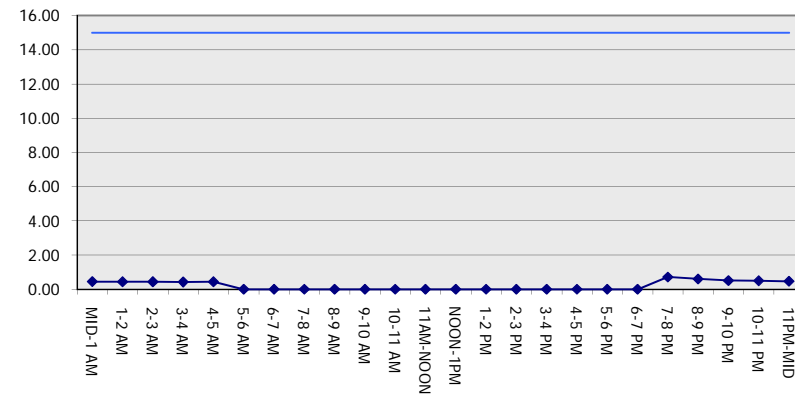
MON-THUR

EASTBOUND DIRECTION

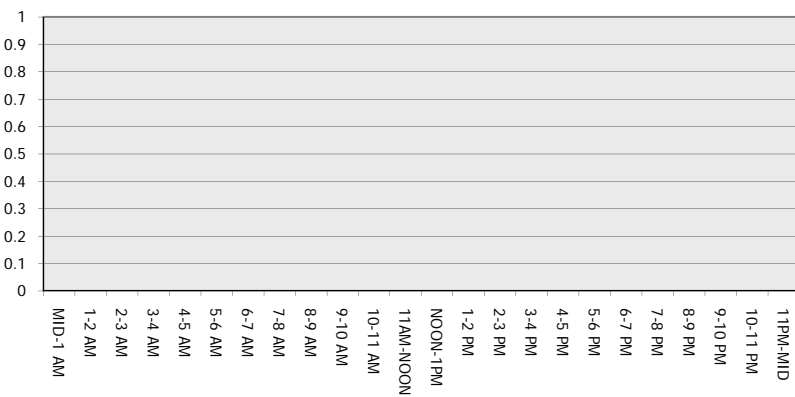
Main Route - Traffic Demand (Vehicles Per Hour)



Main Route Average Delay Per Vehicle (Minutes)



Main Route - Average Queue Length (Vehicles)



Main Route - Average Speed (MPH)

