

<b>USH 41: STH 44 TO STH 26 (WINNEBAGO COUNTY)</b> <b>NIGHTTIME CLOSURE</b> <b>NO DIVERSION ROUTE (MAX QUEUE METHOD)</b>	<b>OCTOBER</b>
	Analyzed for 2009 Construction Season

**SUMMARY OF TRAFFIC MODEL OUTPUT**

SUNDAY SOUTHBOUND DIRECTION

TIME OF DAY	FLOWS AND CAPACITY IN VEH/HR						AVERAGE SPEEDS IN MPH			
	MAIN ROUTE		SITE CAPA CITY	FLOW		AV.DEL PER VEH (MINS)	AVERAGE QUEUE (VEH)	MAIN ROUTE		SITE
	DEMAND FLOW	PCT HEAVY		MAIN ROUTE	'DIVER TED'			WITHOUT WORK ZONE	WITH WORK ZONE	
MID-1 AM	241	0.0	1500	241	0	0.45	0	66.0	55.8	44.5
1-2 AM	148	0.0	1500	148	0	0.44	0	66.1	56.1	44.9
2-3 AM	130	0.0	1500	130	0	0.44	0	66.1	56.2	45.0
3-4 AM	108	0.0	1500	108	0	0.43	0	66.2	56.3	45.1
4-5 AM	117	0.0	1500	117	0	0.43	0	66.1	56.2	45.0
5-6 AM	183	0.0	1500	183	0	0.44	0	66.1	56.0	44.8
6-7 AM	291	0.0	1500	291	0	0.45	0	65.8	55.6	44.3
7-8 AM	424	0.0	1500	424	0	0.46	0	65.6	55.2	43.8
8-9 AM	687	0.0	1500	687	0	0.49	0	65.1	54.4	42.8
9-10 AM	1036	0.0	OFF	1036	0	0.00	0	64.5	64.5	64.5
10-11 AM	1532	0.0	OFF	1532	0	0.00	0	63.5	63.5	63.5
11AM-NOON	1870	0.0	OFF	1870	0	0.00	0	62.9	62.9	62.9
NOON-1PM	1966	0.0	OFF	1966	0	0.00	0	62.7	62.7	62.7
1-2 PM	2005	0.0	OFF	2005	0	0.00	0	62.7	62.7	62.7
2-3 PM	2257	0.0	OFF	2257	0	0.00	0	62.2	62.2	62.2
3-4 PM	2311	0.0	OFF	2311	0	0.00	0	62.1	62.1	62.1
4-5 PM	2274	0.0	OFF	2274	0	0.00	0	62.2	62.2	62.2
5-6 PM	2060	0.0	OFF	2060	0	0.00	0	62.5	62.5	62.5
6-7 PM	1706	0.0	OFF	1706	0	0.00	0	63.2	63.2	63.2
7-8 PM	1239	0.0	1500	1239	0	0.69	0	64.1	50.4	37.3
8-9 PM	790	0.0	1500	790	0	0.50	0	64.9	54.1	42.4
9-10 PM	513	0.0	1500	513	0	0.47	0	65.5	55.0	43.5
10-11 PM	379	0.0	1500	379	0	0.46	0	65.7	55.4	44.0
11PM-MID	353	0.0	1500	353	0	0.46	0	65.7	55.5	44.1

**"OFF" INDICATES NO ROAD WORK (ALL LANES OPEN TO TRAFFIC)**

*----- SITE BREAKDOWN DELAYS -----*	
BREAKDOWN DURATION (MINS)	0
RANGE OF QUEUE DELAY - MIN (VEH-H) MAX	0.0
AV BREAKDOWNS PER DAY	0.00
AV QUEUE DELAY/DAY (VEH-H)	0.0
AV TOTAL DELAY/DAY (VEH-H)	0.0

*----- SITE ACCIDENT DELAYS -----*	
BREAKDOWN DURATION (MINS)	0
RANGE OF QUEUE DELAY - MIN (VEH-H) MAX	0
AV BREAKDOWNS PER DAY	0
AV QUEUE DELAY/DAY (VEH-H)	0
AV TOTAL DELAY/DAY (VEH-H)	0

AVERAGE ACCIDENT NUMBERS (PIA/DAY)	
MAIN ROUTE WITHOUT WORKS	0.0106
MAIN ROUTE WITH WORKS	0.0102
'DIVERSION'	0.0000
PIA: Personal Injury Accidents	
IMPACTS ON ROAD USERS	
ROAD USER COSTS PER DAY	\$689
CONGESTED HOURS PER DAY*	0

\*Delays Exceeding User-Specified Maximum

**USH 41: STH 44 TO STH 26 (WINNEBAGO COUNTY)  
NIGHTTIME CLOSURE  
NO DIVERSION ROUTE (MAX QUEUE METHOD)**

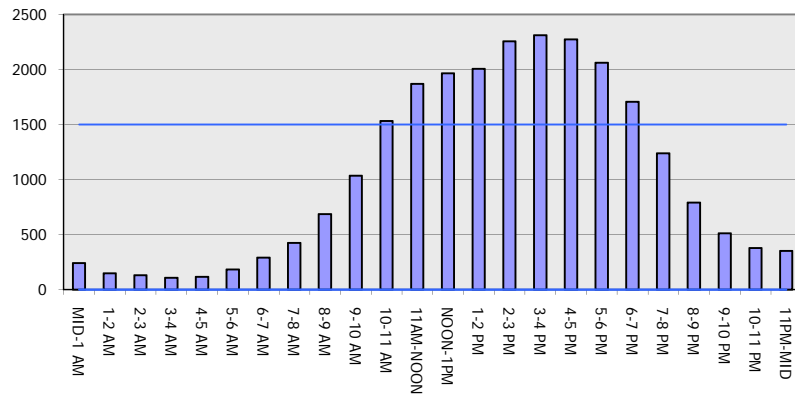
**OCTOBER**

Analyzed for 2009  
Construction Season

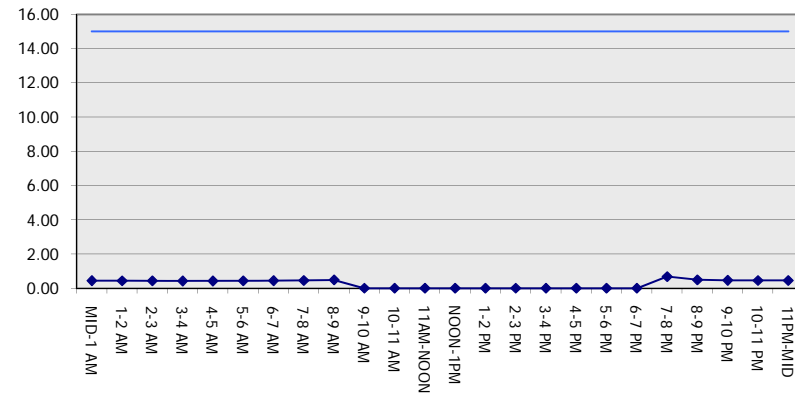
**GRAPHICAL REPRESENTATION OF TRAFFIC MODEL INPUT AND OUTPUT**

**SUNDAY SOUTHBOUND DIRECTION**

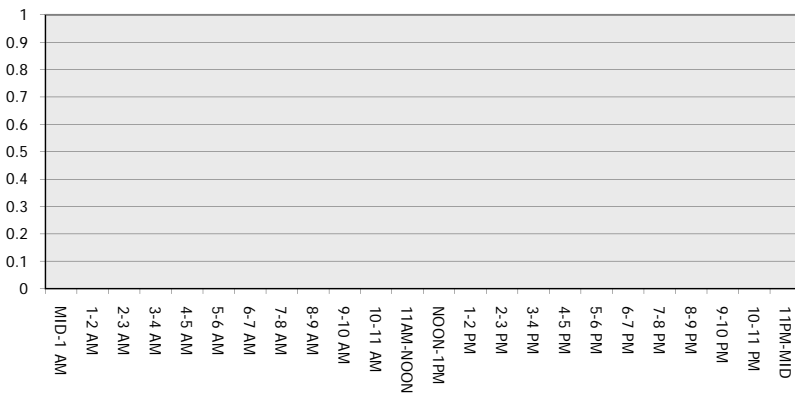
**Main Route - Traffic Demand (Vehicles Per Hour)**



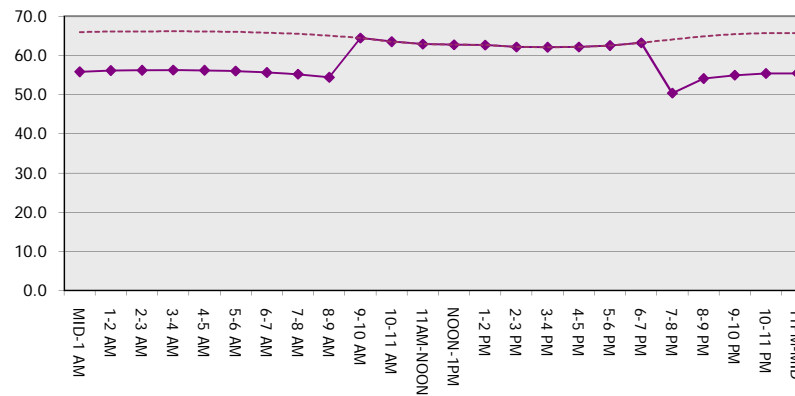
**Main Route Average Delay Per Vehicle (Minutes)**



**Main Route - Average Queue Length (Vehicles)**



**Main Route - Average Speed (MPH)**



<b>USH 41: STH 44 TO STH 26 (WINNEBAGO COUNTY)</b> <b>NIGHTTIME CLOSURE</b> <b>NO DIVERSION ROUTE (MAX QUEUE METHOD)</b>	<b>OCTOBER</b>
	Analyzed for 2009 Construction Season

**SUMMARY OF TRAFFIC MODEL OUTPUT**

SUNDAY NORTHBOUND DIRECTION

TIME OF DAY	FLOWS AND CAPACITY IN VEH/HR						AVERAGE SPEEDS IN MPH			
	MAIN ROUTE		SITE CAPA CITY	FLOW		AV.DEL PER VEH (MINS)	AVERAGE QUEUE (VEH)	MAIN ROUTE		SITE
	DEMAND FLOW	PCT HEAVY		MAIN ROUTE	'DIVER TED'			WITHOUT WORK ZONE	WITH WORK ZONE	
MID-1 AM	199	0.0	1500	199	0	0.44	0	66.0	56.0	44.7
1-2 AM	134	0.0	1500	134	0	0.44	0	66.1	56.1	45.0
2-3 AM	99	0.0	1500	99	0	0.43	0	66.2	56.3	45.1
3-4 AM	74	0.0	1500	74	0	0.43	0	66.3	56.3	45.2
4-5 AM	83	0.0	1500	83	0	0.43	0	66.2	56.3	45.1
5-6 AM	188	0.0	1500	188	0	0.44	0	66.0	56.0	44.7
6-7 AM	226	0.0	1500	226	0	0.44	0	66.0	55.9	44.6
7-8 AM	362	0.0	1500	362	0	0.46	0	65.7	55.5	44.0
8-9 AM	793	0.0	1500	793	0	0.50	0	64.9	54.1	42.4
9-10 AM	1081	0.0	OFF	1081	0	0.00	0	64.4	64.4	64.4
10-11 AM	1206	0.0	OFF	1206	0	0.00	0	64.1	64.1	64.1
11AM-NOON	1355	0.0	OFF	1355	0	0.00	0	63.8	63.8	63.8
NOON-1PM	1480	0.0	OFF	1480	0	0.00	0	63.7	63.7	63.7
1-2 PM	1482	0.0	OFF	1482	0	0.00	0	63.7	63.7	63.7
2-3 PM	1530	0.0	OFF	1530	0	0.00	0	63.5	63.5	63.5
3-4 PM	1600	0.0	OFF	1600	0	0.00	0	63.4	63.4	63.4
4-5 PM	1515	0.0	OFF	1515	0	0.00	0	63.6	63.6	63.6
5-6 PM	1366	0.0	OFF	1366	0	0.00	0	63.8	63.8	63.8
6-7 PM	1171	0.0	OFF	1171	0	0.00	0	64.2	64.2	64.2
7-8 PM	946	0.0	1500	946	0	0.51	0	64.6	53.7	41.9
8-9 PM	631	0.0	1500	631	0	0.48	0	65.2	54.6	43.0
9-10 PM	467	0.0	1500	467	0	0.47	0	65.5	55.1	43.7
10-11 PM	338	0.0	1500	338	0	0.46	0	65.8	55.5	44.2
11PM-MID	191	0.0	1500	191	0	0.44	0	66.0	56.0	44.7

"OFF" INDICATES NO ROAD WORK (ALL LANES OPEN TO TRAFFIC)

*----- SITE BREAKDOWN DELAYS -----*	
BREAKDOWN DURATION (MINS)	0
RANGE OF QUEUE DELAY - MIN (VEH-H) MAX	0.0
AV BREAKDOWNS PER DAY	0.00
AV QUEUE DELAY/DAY (VEH-H)	0.0
AV TOTAL DELAY/DAY (VEH-H)	0.0

*----- SITE ACCIDENT DELAYS -----*	
BREAKDOWN DURATION (MINS)	0
RANGE OF QUEUE DELAY - MIN (VEH-H) MAX	0
AV BREAKDOWNS PER DAY	0
AV QUEUE DELAY/DAY (VEH-H)	0
AV TOTAL DELAY/DAY (VEH-H)	0

AVERAGE ACCIDENT NUMBERS (PIA/DAY)	
MAIN ROUTE WITHOUT WORKS	0.0080
MAIN ROUTE WITH WORKS	0.0077
'DIVERSION'	0.0000

PIA: Personal Injury Accidents

ECONOMIC IMPACT ON ROAD USERS	
ROAD USER COSTS PER DAY	\$534
CONGESTED HOURS PER DAY*	0

\*Delays Exceeding User-Specified Maximum

**USH 41: STH 44 TO STH 26 (WINNEBAGO COUNTY)  
NIGHTTIME CLOSURE  
NO DIVERSION ROUTE (MAX QUEUE METHOD)**

**OCTOBER**

Analyzed for 2009  
Construction Season

**GRAPHICAL REPRESENTATION OF TRAFFIC MODEL INPUT AND OUTPUT**  
**SUNDAY NORTHBOUND DIRECTION**

