

USH 41: STH 44 TO STH 26 (WINNEBAGO COUNTY) NIGHTTIME CLOSURE NO DIVERSION ROUTE (MAX QUEUE METHOD)	OCTOBER
	Analyzed for 2009 Construction Season

SUMMARY OF TRAFFIC MODEL OUTPUT

MON-THUR SOUTHBOUND DIRECTION

TIME OF DAY	FLOWS AND CAPACITY IN VEH/HR							AVERAGE SPEEDS IN MPH			
	MAIN ROUTE		SITE CAPA CITY	FLOW		AV.DEL PER VEH (MINS)	AVERAGE QUEUE (VEH)	MAIN ROUTE		SITE	
	DEMAND FLOW	PCT HEAVY		MAIN ROUTE	'DIVER TED'			WITHOUT WORK ZONE	WITH WORK ZONE		
MID-1 AM	201	0.0	1500	201	0	0.44	0	66.0	56.0	44.6	
1-2 AM	155	0.0	1500	155	0	0.44	0	66.1	56.1	44.8	
2-3 AM	115	0.0	1500	115	0	0.43	0	66.2	56.2	45.0	
3-4 AM	178	0.0	1500	178	0	0.44	0	66.1	56.0	44.8	
4-5 AM	352	0.0	1500	352	0	0.46	0	65.7	55.5	44.1	
5-6 AM	840	0.0	OFF	840	0	0.00	0	64.8	64.8	64.8	
6-7 AM	1495	0.0	OFF	1495	0	0.00	0	63.6	63.6	63.6	
7-8 AM	2081	0.0	OFF	2081	0	0.00	0	62.5	62.5	62.5	
8-9 AM	1582	0.0	OFF	1582	0	0.00	0	63.5	63.5	63.5	
9-10 AM	1333	0.0	OFF	1333	0	0.00	0	63.9	63.9	63.9	
10-11 AM	1321	0.0	OFF	1321	0	0.00	0	63.9	63.9	63.9	
11AM-NOON	1383	0.0	OFF	1383	0	0.00	0	63.8	63.8	63.8	
NOON-1PM	1432	0.0	OFF	1432	0	0.00	0	63.7	63.7	63.7	
1-2 PM	1512	0.0	OFF	1512	0	0.00	0	63.6	63.6	63.6	
2-3 PM	1737	0.0	OFF	1737	0	0.00	0	63.2	63.2	63.2	
3-4 PM	1970	0.0	OFF	1970	0	0.00	0	62.7	62.7	62.7	
4-5 PM	2142	0.0	OFF	2142	0	0.00	0	62.4	62.4	62.4	
5-6 PM	1846	0.0	OFF	1846	0	0.00	0	63.0	63.0	63.0	
6-7 PM	1167	0.0	OFF	1167	0	0.00	0	64.2	64.2	64.2	
7-8 PM	808	0.0	1500	808	0	0.50	0	64.9	54.0	42.4	
8-9 PM	699	0.0	1500	699	0	0.49	0	65.1	54.4	42.8	
9-10 PM	550	0.0	1500	550	0	0.48	0	65.4	54.8	43.3	
10-11 PM	411	0.0	1500	411	0	0.46	0	65.6	55.3	43.8	
11PM-MID	255	0.0	1500	255	0	0.45	0	65.9	55.8	44.5	

"OFF" INDICATES NO ROAD WORK (ALL LANES OPEN TO TRAFFIC)

----- SITE BREAKDOWN DELAYS -----	
BREAKDOWN DURATION (MINS)	0
RANGE OF QUEUE DELAY - MIN (VEH-H) MAX	0.0
AV BREAKDOWNS PER DAY	0.00
AV QUEUE DELAY/DAY (VEH-H)	0.0
AV TOTAL DELAY/DAY (VEH-H)	0.0

----- SITE ACCIDENT DELAYS -----	
BREAKDOWN DURATION (MINS)	0
RANGE OF QUEUE DELAY - MIN (VEH-H) MAX	0
AV BREAKDOWNS PER DAY	0
AV QUEUE DELAY/DAY (VEH-H)	0
AV TOTAL DELAY/DAY (VEH-H)	0

AVERAGE ACCIDENT NUMBERS (PIA/DAY)	
MAIN ROUTE WITHOUT WORKS	0.0110
MAIN ROUTE WITH WORKS	0.0108
'DIVERSION'	0.0000
PIA: Personal Injury Accidents	
IMPACTS ON ROAD USERS	
ROAD USER COSTS PER DAY	\$359
CONGESTED HOURS PER DAY*	0

*Delays Exceeding User-Specified Maximum

**USH 41: STH 44 TO STH 26 (WINNEBAGO COUNTY)
NIGHTTIME CLOSURE
NO DIVERSION ROUTE (MAX QUEUE METHOD)**

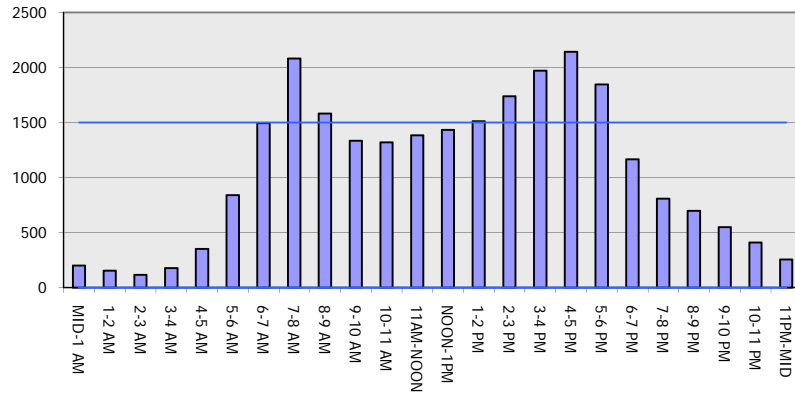
OCTOBER

Analyzed for 2009
Construction Season

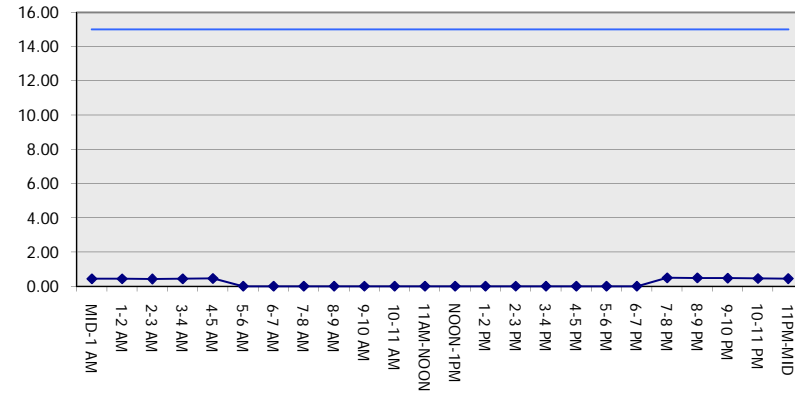
GRAPHICAL REPRESENTATION OF TRAFFIC MODEL INPUT AND OUTPUT

MON-THUR SOUTHBOUND DIRECTION

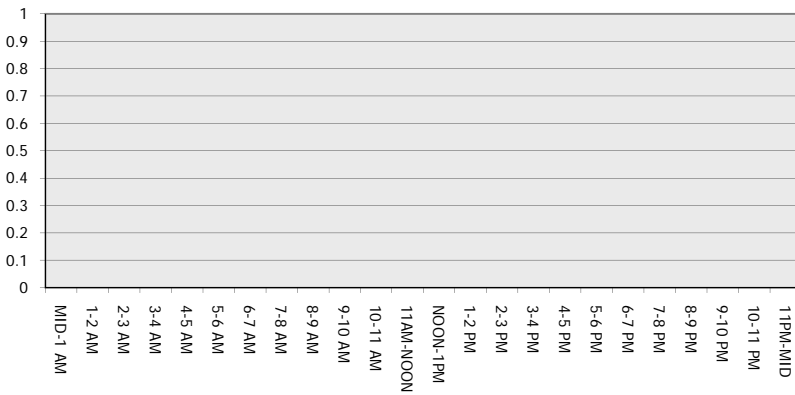
Main Route - Traffic Demand (Vehicles Per Hour)



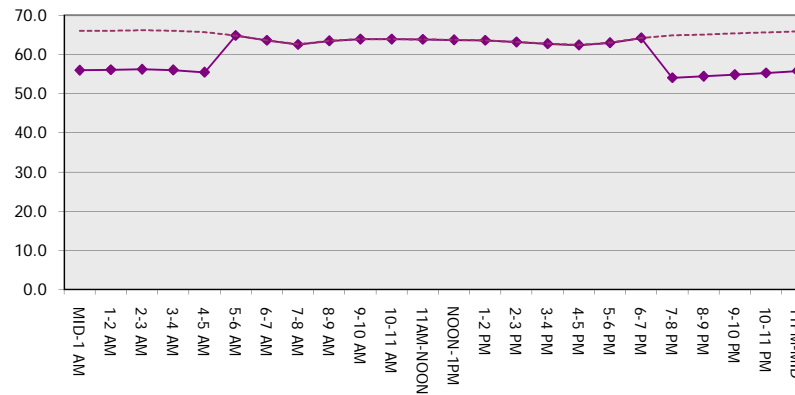
Main Route Average Delay Per Vehicle (Minutes)



Main Route - Average Queue Length (Vehicles)



Main Route - Average Speed (MPH)



USH 41: STH 44 TO STH 26 (WINNEBAGO COUNTY) NIGHTTIME CLOSURE NO DIVERSION ROUTE (MAX QUEUE METHOD)	OCTOBER
	Analyzed for 2009 Construction Season

SUMMARY OF TRAFFIC MODEL OUTPUT

MON-THUR NORTHBOUND DIRECTION

TIME OF DAY	FLOWS AND CAPACITY IN VEH/HR						AVERAGE SPEEDS IN MPH			
	MAIN ROUTE		SITE CAPA CITY	FLOW		AV.DEL PER VEH (MINS)	AVERAGE QUEUE (VEH)	MAIN ROUTE		SITE
	DEMAND FLOW	PCT HEAVY		MAIN ROUTE	'DIVER TED'			WITHOUT WORK ZONE	WITH WORK ZONE	
MID-1 AM	143	0.0	1500	143	0	0.44	0	66.1	56.1	44.9
1-2 AM	108	0.0	1500	108	0	0.43	0	66.2	56.3	45.1
2-3 AM	105	0.0	1500	105	0	0.43	0	66.2	56.3	45.1
3-4 AM	138	0.0	1500	138	0	0.44	0	66.1	56.1	45.0
4-5 AM	244	0.0	1500	244	0	0.45	0	66.0	55.8	44.5
5-6 AM	684	0.0	OFF	684	0	0.00	0	65.1	65.1	65.1
6-7 AM	1272	0.0	OFF	1272	0	0.00	0	64.0	64.0	64.0
7-8 AM	1811	0.0	OFF	1811	0	0.00	0	63.0	63.0	63.0
8-9 AM	1290	0.0	OFF	1290	0	0.00	0	64.0	64.0	64.0
9-10 AM	1219	0.0	OFF	1219	0	0.00	0	64.1	64.1	64.1
10-11 AM	1222	0.0	OFF	1222	0	0.00	0	64.1	64.1	64.1
11AM-NOON	1253	0.0	OFF	1253	0	0.00	0	64.0	64.0	64.0
NOON-1PM	1297	0.0	OFF	1297	0	0.00	0	64.0	64.0	64.0
1-2 PM	1354	0.0	OFF	1354	0	0.00	0	63.8	63.8	63.8
2-3 PM	1536	0.0	OFF	1536	0	0.00	0	63.5	63.5	63.5
3-4 PM	1727	0.0	OFF	1727	0	0.00	0	63.2	63.2	63.2
4-5 PM	1979	0.0	OFF	1979	0	0.00	0	62.7	62.7	62.7
5-6 PM	1833	0.0	OFF	1833	0	0.00	0	63.0	63.0	63.0
6-7 PM	1212	0.0	OFF	1212	0	0.00	0	64.1	64.1	64.1
7-8 PM	802	0.0	1500	802	0	0.50	0	64.9	54.1	42.4
8-9 PM	653	0.0	1500	653	0	0.49	0	65.1	54.5	42.9
9-10 PM	512	0.0	1500	512	0	0.47	0	65.5	55.0	43.5
10-11 PM	375	0.0	1500	375	0	0.46	0	65.7	55.4	44.0
11PM-MID	258	0.0	1500	258	0	0.45	0	65.9	55.8	44.5

"OFF" INDICATES NO ROAD WORK (ALL LANES OPEN TO TRAFFIC)

----- SITE BREAKDOWN DELAYS -----	
BREAKDOWN DURATION (MINS)	0
RANGE OF QUEUE DELAY - MIN (VEH-H) MAX	0.0
AV BREAKDOWNS PER DAY	0.00
AV QUEUE DELAY/DAY (VEH-H)	0.0
AV TOTAL DELAY/DAY (VEH-H)	0.0

----- SITE ACCIDENT DELAYS -----	
BREAKDOWN DURATION (MINS)	0
RANGE OF QUEUE DELAY - MIN (VEH-H) MAX	0
AV BREAKDOWNS PER DAY	0
AV QUEUE DELAY/DAY (VEH-H)	0
AV TOTAL DELAY/DAY (VEH-H)	0

AVERAGE ACCIDENT NUMBERS (PIA/DAY)	
MAIN ROUTE WITHOUT WORKS	0.0099
MAIN ROUTE WITH WORKS	0.0097
'DIVERSION'	0.0000

PIA: Personal Injury Accidents

ECONOMIC IMPACT ON ROAD USERS	
ROAD USER COSTS PER DAY	\$322
CONGESTED HOURS PER DAY*	0

*Delays Exceeding User-Specified Maximum

**USH 41: STH 44 TO STH 26 (WINNEBAGO COUNTY)
NIGHTTIME CLOSURE
NO DIVERSION ROUTE (MAX QUEUE METHOD)**

OCTOBER

Analyzed for 2009
Construction Season

**GRAPHICAL REPRESENTATION OF TRAFFIC MODEL INPUT AND OUTPUT
MON-THUR NORTHBOUND DIRECTION**

