

USH 41: STH 44 TO STH 26 (WINNEBAGO COUNTY) NIGHTTIME CLOSURE NO DIVERSION ROUTE (MAX QUEUE METHOD)	OCTOBER
	Analyzed for 2009 Construction Season

SUMMARY OF TRAFFIC MODEL OUTPUT

FRIDAY SOUTHBOUND DIRECTION

TIME OF DAY	FLOWS AND CAPACITY IN VEH/HR						AVERAGE SPEEDS IN MPH			
	MAIN ROUTE		SITE CAPA CITY	FLOW		AV.DEL PER VEH (MINS)	AVERAGE QUEUE (VEH)	MAIN ROUTE		SITE
	DEMAND FLOW	PCT HEAVY		MAIN ROUTE	'DIVER TED'			WITHOUT WORK ZONE	WITH WORK ZONE	
MID-1 AM	149	0.0	1500	149	0	0.44	0	66.1	56.1	44.9
1-2 AM	128	0.0	1500	128	0	0.43	0	66.1	56.2	45.0
2-3 AM	141	0.0	1500	141	0	0.44	0	66.1	56.1	44.9
3-4 AM	179	0.0	1500	179	0	0.44	0	66.1	56.0	44.8
4-5 AM	326	0.0	1500	326	0	0.45	0	65.8	55.5	44.2
5-6 AM	760	0.0	OFF	760	0	0.00	0	65.0	65.0	65.0
6-7 AM	1346	0.0	OFF	1346	0	0.00	0	63.9	63.9	63.9
7-8 AM	1913	0.0	OFF	1913	0	0.00	0	62.8	62.8	62.8
8-9 AM	1570	0.0	OFF	1570	0	0.00	0	63.5	63.5	63.5
9-10 AM	1420	0.0	OFF	1420	0	0.00	0	63.7	63.7	63.7
10-11 AM	1523	0.0	OFF	1523	0	0.00	0	63.5	63.5	63.5
11AM-NOON	1635	0.0	OFF	1635	0	0.00	0	63.3	63.3	63.3
NOON-1PM	1771	0.0	OFF	1771	0	0.00	0	63.1	63.1	63.1
1-2 PM	1883	0.0	OFF	1883	0	0.00	0	62.9	62.9	62.9
2-3 PM	2059	0.0	OFF	2059	0	0.00	0	62.5	62.5	62.5
3-4 PM	2306	0.0	OFF	2306	0	0.00	0	62.1	62.1	62.1
4-5 PM	2424	0.0	OFF	2424	0	0.00	0	61.7	61.7	61.7
5-6 PM	2158	0.0	OFF	2158	0	0.00	0	62.3	62.3	62.3
6-7 PM	1522	0.0	OFF	1522	0	0.00	0	63.5	63.5	63.5
7-8 PM	1007	0.0	1500	1007	0	0.52	0	64.5	53.5	41.7
8-9 PM	809	0.0	1500	809	0	0.50	0	64.9	54.0	42.4
9-10 PM	689	0.0	1500	689	0	0.49	0	65.1	54.4	42.8
10-11 PM	561	0.0	1500	561	0	0.48	0	65.3	54.8	43.3
11PM-MID	347	0.0	1500	347	0	0.46	0	65.8	55.5	44.1

"OFF" INDICATES NO ROAD WORK (ALL LANES OPEN TO TRAFFIC)

----- SITE BREAKDOWN DELAYS -----	
BREAKDOWN DURATION (MINS)	0
RANGE OF QUEUE DELAY - MIN (VEH-H) MAX	0.0
AV BREAKDOWNS PER DAY	0.00
AV QUEUE DELAY/DAY (VEH-H)	0.0
AV TOTAL DELAY/DAY (VEH-H)	0.0

----- SITE ACCIDENT DELAYS -----	
BREAKDOWN DURATION (MINS)	0
RANGE OF QUEUE DELAY - MIN (VEH-H) MAX	0
AV BREAKDOWNS PER DAY	0
AV QUEUE DELAY/DAY (VEH-H)	0
AV TOTAL DELAY/DAY (VEH-H)	0

AVERAGE ACCIDENT NUMBERS (PIA/DAY)	
MAIN ROUTE WITHOUT WORKS	0.0123
MAIN ROUTE WITH WORKS	0.0120
'DIVERSION'	0.0000
PIA: Personal Injury Accidents	
IMPACTS ON ROAD USERS	
ROAD USER COSTS PER DAY	\$456
CONGESTED HOURS PER DAY*	0

*Delays Exceeding User-Specified Maximum

**USH 41: STH 44 TO STH 26 (WINNEBAGO COUNTY)
NIGHTTIME CLOSURE
NO DIVERSION ROUTE (MAX QUEUE METHOD)**

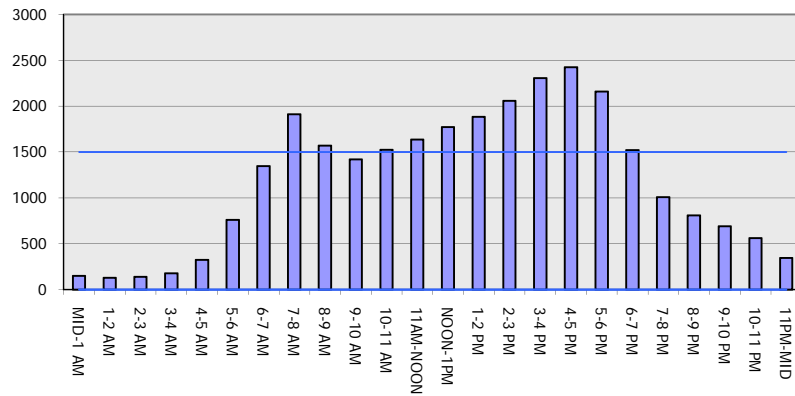
OCTOBER

Analyzed for 2009
Construction Season

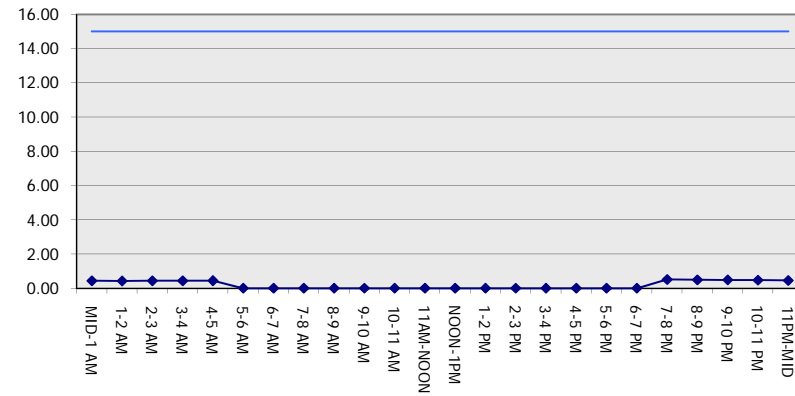
GRAPHICAL REPRESENTATION OF TRAFFIC MODEL INPUT AND OUTPUT

FRIDAY SOUTHBOUND DIRECTION

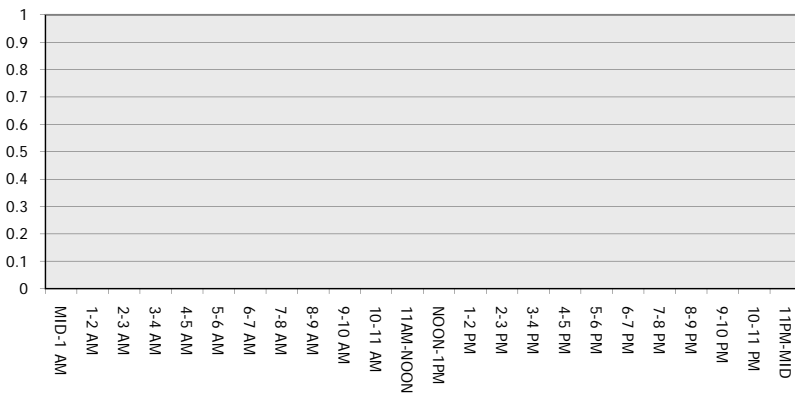
Main Route - Traffic Demand (Vehicles Per Hour)



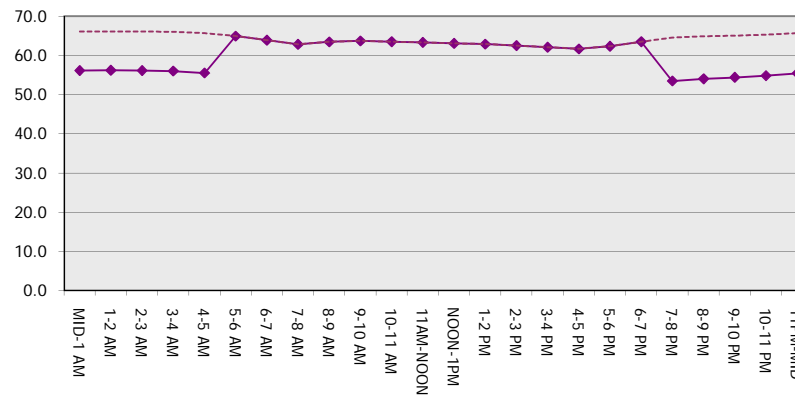
Main Route Average Delay Per Vehicle (Minutes)



Main Route - Average Queue Length (Vehicles)



Main Route - Average Speed (MPH)



USH 41: STH 44 TO STH 26 (WINNEBAGO COUNTY) NIGHTTIME CLOSURE NO DIVERSION ROUTE (MAX QUEUE METHOD)	OCTOBER
	Analyzed for 2009 Construction Season

SUMMARY OF TRAFFIC MODEL OUTPUT

FRIDAY NORTHBOUND DIRECTION

TIME OF DAY	FLOWS AND CAPACITY IN VEH/HR						AVERAGE SPEEDS IN MPH			
	MAIN ROUTE		SITE CAPA CITY	FLOW		AV.DEL PER VEH (MINS)	AVERAGE QUEUE (VEH)	MAIN ROUTE		SITE
	DEMAND FLOW	PCT HEAVY		MAIN ROUTE	'DIVER TED'			WITHOUT WORK ZONE	WITH WORK ZONE	
MID-1 AM	175	0.0	1500	175	0	0.44	0	66.1	56.0	44.8
1-2 AM	135	0.0	1500	135	0	0.44	0	66.1	56.1	45.0
2-3 AM	134	0.0	1500	134	0	0.44	0	66.1	56.1	45.0
3-4 AM	155	0.0	1500	155	0	0.44	0	66.1	56.1	44.8
4-5 AM	255	0.0	1500	255	0	0.45	0	65.9	55.8	44.5
5-6 AM	649	0.0	OFF	649	0	0.00	0	65.2	65.2	65.2
6-7 AM	1208	0.0	OFF	1208	0	0.00	0	64.1	64.1	64.1
7-8 AM	1725	0.0	OFF	1725	0	0.00	0	63.2	63.2	63.2
8-9 AM	1331	0.0	OFF	1331	0	0.00	0	63.9	63.9	63.9
9-10 AM	1388	0.0	OFF	1388	0	0.00	0	63.8	63.8	63.8
10-11 AM	1526	0.0	OFF	1526	0	0.00	0	63.5	63.5	63.5
11AM-NOON	1701	0.0	OFF	1701	0	0.00	0	63.2	63.2	63.2
NOON-1PM	1770	0.0	OFF	1770	0	0.00	0	63.1	63.1	63.1
1-2 PM	1937	0.0	OFF	1937	0	0.00	0	62.8	62.8	62.8
2-3 PM	2136	0.0	OFF	2136	0	0.00	0	62.4	62.4	62.4
3-4 PM	2340	0.0	OFF	2340	0	0.00	0	62.0	62.0	62.0
4-5 PM	2492	0.0	OFF	2492	0	0.00	0	61.0	61.0	61.0
5-6 PM	2479	0.0	OFF	2479	0	0.00	0	61.1	61.1	61.1
6-7 PM	1980	0.0	OFF	1980	0	0.00	0	62.7	62.7	62.7
7-8 PM	1438	0.0	1499	1438	0	1.22	9	63.7	43.0	32.8
8-9 PM	1034	0.0	1500	1034	0	0.52	0	64.5	53.3	41.5
9-10 PM	810	0.0	1500	810	0	0.50	0	64.9	54.0	42.4
10-11 PM	543	0.0	1500	543	0	0.48	0	65.4	54.8	43.3
11PM-MID	388	0.0	1500	388	0	0.46	0	65.6	55.3	44.0

"OFF" INDICATES NO ROAD WORK (ALL LANES OPEN TO TRAFFIC)

----- SITE BREAKDOWN DELAYS -----	
BREAKDOWN DURATION (MINS)	0
RANGE OF QUEUE DELAY - MIN (VEH-H) MAX	0.0
AV BREAKDOWNS PER DAY	0.00
AV QUEUE DELAY/DAY (VEH-H)	0.0
AV TOTAL DELAY/DAY (VEH-H)	0.0

----- SITE ACCIDENT DELAYS -----	
BREAKDOWN DURATION (MINS)	0
RANGE OF QUEUE DELAY - MIN (VEH-H) MAX	0
AV BREAKDOWNS PER DAY	0
AV QUEUE DELAY/DAY (VEH-H)	0
AV TOTAL DELAY/DAY (VEH-H)	0

AVERAGE ACCIDENT NUMBERS (PIA/DAY)	
MAIN ROUTE WITHOUT WORKS	0.0128
MAIN ROUTE WITH WORKS	0.0125
'DIVERSION'	0.0000

PIA: Personal Injury Accidents

ECONOMIC IMPACT ON ROAD USERS	
ROAD USER COSTS PER DAY	\$763
CONGESTED HOURS PER DAY*	0

*Delays Exceeding User-Specified Maximum

**USH 41: STH 44 TO STH 26 (WINNEBAGO COUNTY)
NIGHTTIME CLOSURE
NO DIVERSION ROUTE (MAX QUEUE METHOD)**

OCTOBER

Analyzed for 2009
Construction Season

**GRAPHICAL REPRESENTATION OF TRAFFIC MODEL INPUT AND OUTPUT
FRIDAY NORTHBOUND DIRECTION**

