

**USH 41: STH 44 TO STH 26 (WINNEBAGO COUNTY)  
NIGHTTIME CLOSURE  
NO DIVERSION ROUTE (MAX QUEUE METHOD)**

**AUGUST**

Analyzed for 2009  
Construction Season

**SUMMARY OF TRAFFIC MODEL OUTPUT**

SATURDAY SOUTHBOUND DIRECTION

TIME OF DAY	FLOWS AND CAPACITY IN VEH/HR						AVERAGE SPEEDS IN MPH			
	MAIN ROUTE		SITE CAPA CITY	FLOW		AV.DEL PER VEH (MINS)	AVERAGE QUEUE (VEH)	MAIN ROUTE		SITE
	DEMAND FLOW	PCT HEAVY		MAIN ROUTE	'DIVER TED'			WITHOUT WORK ZONE	WITH WORK ZONE	
MID-1 AM	248	0.0	1500	248	0	0.45	0	66.0	55.8	44.5
1-2 AM	157	0.0	1500	157	0	0.44	0	66.1	56.1	44.8
2-3 AM	130	0.0	1500	130	0	0.44	0	66.1	56.2	45.0
3-4 AM	105	0.0	1500	105	0	0.43	0	66.2	56.3	45.1
4-5 AM	182	0.0	1500	182	0	0.44	0	66.1	56.0	44.8
5-6 AM	295	0.0	1500	295	0	0.45	0	65.8	55.6	44.3
6-7 AM	529	0.0	1500	529	0	0.47	0	65.4	54.9	43.4
7-8 AM	866	0.0	1500	866	0	0.51	0	64.8	53.9	42.2
8-9 AM	1328	0.0	OFF	1328	0	0.00	0	63.9	63.9	63.9
9-10 AM	1573	0.0	OFF	1573	0	0.00	0	63.5	63.5	63.5
10-11 AM	1815	0.0	OFF	1815	0	0.00	0	63.0	63.0	63.0
11AM-NOON	1877	0.0	OFF	1877	0	0.00	0	62.9	62.9	62.9
NOON-1PM	1853	0.0	OFF	1853	0	0.00	0	62.9	62.9	62.9
1-2 PM	1766	0.0	OFF	1766	0	0.00	0	63.1	63.1	63.1
2-3 PM	1741	0.0	OFF	1741	0	0.00	0	63.2	63.2	63.2
3-4 PM	1602	0.0	OFF	1602	0	0.00	0	63.4	63.4	63.4
4-5 PM	1519	0.0	OFF	1519	0	0.00	0	63.5	63.5	63.5
5-6 PM	1329	0.0	OFF	1329	0	0.00	0	63.9	63.9	63.9
6-7 PM	1082	0.0	1500	1082	0	0.53	0	64.4	53.2	41.4
7-8 PM	958	0.0	1500	958	0	0.52	0	64.6	53.6	41.8
8-9 PM	829	0.0	1500	829	0	0.50	0	64.8	54.0	42.3
9-10 PM	796	0.0	1500	796	0	0.50	0	64.9	54.1	42.4
10-11 PM	883	0.0	1500	883	0	0.51	0	64.8	53.8	42.1
11PM-MID	901	0.0	1500	901	0	0.51	0	64.7	53.8	42.0

"OFF" INDICATES NO ROAD WORK (ALL LANES OPEN TO TRAFFIC)

*----- SITE BREAKDOWN DELAYS -----*	
BREAKDOWN DURATION (MINS)	0
RANGE OF QUEUE DELAY - MIN (VEH-H) MAX	0.0
AV BREAKDOWNS PER DAY	0.00
AV QUEUE DELAY/DAY (VEH-H)	0.0
AV TOTAL DELAY/DAY (VEH-H)	0.0

*----- SITE ACCIDENT DELAYS -----*	
BREAKDOWN DURATION (MINS)	0
RANGE OF QUEUE DELAY - MIN (VEH-H) MAX	0
AV BREAKDOWNS PER DAY	0
AV QUEUE DELAY/DAY (VEH-H)	0
AV TOTAL DELAY/DAY (VEH-H)	0

AVERAGE ACCIDENT NUMBERS (PIA/DAY)	
MAIN ROUTE WITHOUT WORKS	0.0105
MAIN ROUTE WITH WORKS	0.0100
'DIVERSION'	0.0000
PIA: Personal Injury Accidents	
IMPACTS ON ROAD USERS	
ROAD USER COSTS PER DAY	\$937
CONGESTED HOURS PER DAY*	0

\*Delays Exceeding User-Specified Maximum

**USH 41: STH 44 TO STH 26 (WINNEBAGO COUNTY)  
NIGHTTIME CLOSURE  
NO DIVERSION ROUTE (MAX QUEUE METHOD)**

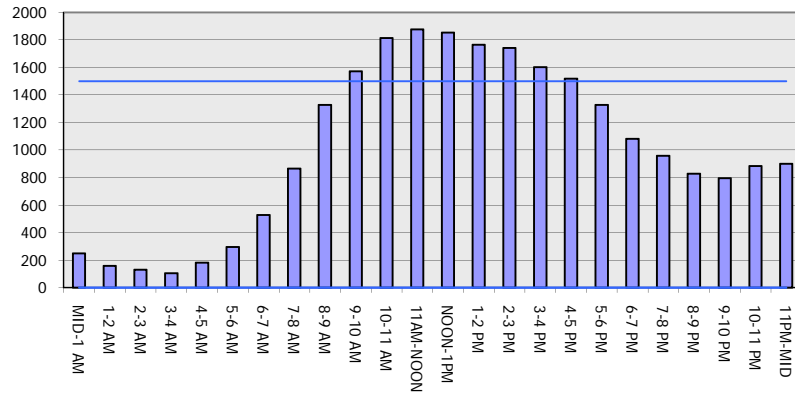
**AUGUST**

Analyzed for 2009  
Construction Season

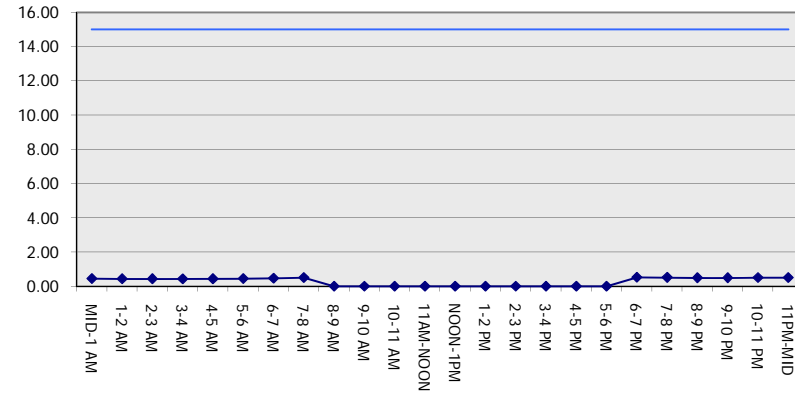
**GRAPHICAL REPRESENTATION OF TRAFFIC MODEL INPUT AND OUTPUT**

**SATURDAY SOUTHBOUND DIRECTION**

**Main Route - Traffic Demand (Vehicles Per Hour)**



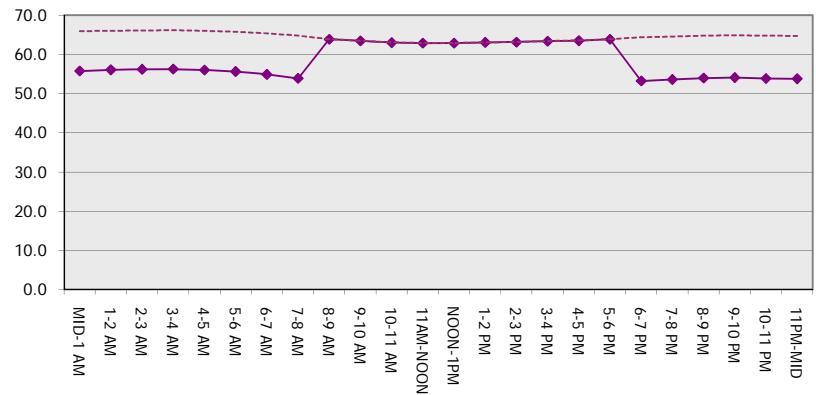
**Main Route Average Delay Per Vehicle (Minutes)**



**Main Route - Average Queue Length (Vehicles)**



**Main Route - Average Speed (MPH)**



<b>USH 41: STH 44 TO STH 26 (WINNEBAGO COUNTY)</b> <b>NIGHTTIME CLOSURE</b> <b>NO DIVERSION ROUTE (MAX QUEUE METHOD)</b>	<b>AUGUST</b>
	Analyzed for 2009 Construction Season

**SUMMARY OF TRAFFIC MODEL OUTPUT**

SATURDAY NORTHBOUND DIRECTION

TIME OF DAY	FLOWS AND CAPACITY IN VEH/HR						AVERAGE SPEEDS IN MPH			
	MAIN ROUTE		SITE CAPA CITY	FLOW		AV.DEL PER VEH (MINS)	AVERAGE QUEUE (VEH)	MAIN ROUTE		SITE
	DEMAND FLOW	PCT HEAVY		MAIN ROUTE	'DIVER TED'			WITHOUT WORK ZONE	WITH WORK ZONE	
MID-1 AM	288	0.0	1500	288	0	0.45	0	65.8	55.6	44.3
1-2 AM	192	0.0	1500	192	0	0.44	0	66.0	56.0	44.7
2-3 AM	129	0.0	1500	129	0	0.43	0	66.1	56.2	45.0
3-4 AM	121	0.0	1500	121	0	0.43	0	66.1	56.2	45.0
4-5 AM	149	0.0	1500	149	0	0.44	0	66.1	56.1	44.9
5-6 AM	304	0.0	1500	304	0	0.45	0	65.8	55.6	44.3
6-7 AM	447	0.0	1500	447	0	0.47	0	65.6	55.1	43.7
7-8 AM	700	0.0	1500	700	0	0.49	0	65.1	54.4	42.8
8-9 AM	992	0.0	OFF	992	0	0.00	0	64.5	64.5	64.5
9-10 AM	1358	0.0	OFF	1358	0	0.00	0	63.8	63.8	63.8
10-11 AM	1728	0.0	OFF	1728	0	0.00	0	63.2	63.2	63.2
11AM-NOON	1861	0.0	OFF	1861	0	0.00	0	62.9	62.9	62.9
NOON-1PM	1879	0.0	OFF	1879	0	0.00	0	62.9	62.9	62.9
1-2 PM	1896	0.0	OFF	1896	0	0.00	0	62.8	62.8	62.8
2-3 PM	1844	0.0	OFF	1844	0	0.00	0	63.0	63.0	63.0
3-4 PM	1798	0.0	OFF	1798	0	0.00	0	63.0	63.0	63.0
4-5 PM	1714	0.0	OFF	1714	0	0.00	0	63.2	63.2	63.2
5-6 PM	1548	0.0	OFF	1548	0	0.00	0	63.5	63.5	63.5
6-7 PM	1179	0.0	1500	1179	0	0.61	0	64.2	51.7	39.1
7-8 PM	898	0.0	1500	898	0	0.51	0	64.7	53.8	42.0
8-9 PM	784	0.0	1500	784	0	0.50	0	64.9	54.1	42.5
9-10 PM	673	0.0	1500	673	0	0.49	0	65.1	54.5	42.8
10-11 PM	552	0.0	1500	552	0	0.48	0	65.3	54.8	43.3
11PM-MID	384	0.0	1500	384	0	0.46	0	65.6	55.3	44.0

"OFF" INDICATES NO ROAD WORK (ALL LANES OPEN TO TRAFFIC)

*----- SITE BREAKDOWN DELAYS -----*	
BREAKDOWN DURATION (MINS)	0
RANGE OF QUEUE DELAY - MIN (VEH-H) MAX	0.0
AV BREAKDOWNS PER DAY	0.00
AV QUEUE DELAY/DAY (VEH-H)	0.0
AV TOTAL DELAY/DAY (VEH-H)	0.0

*----- SITE ACCIDENT DELAYS -----*	
BREAKDOWN DURATION (MINS)	0
RANGE OF QUEUE DELAY - MIN (VEH-H) MAX	0
AV BREAKDOWNS PER DAY	0
AV QUEUE DELAY/DAY (VEH-H)	0
AV TOTAL DELAY/DAY (VEH-H)	0

AVERAGE ACCIDENT NUMBERS (PIA/DAY)	
MAIN ROUTE WITHOUT WORKS	0.0101
MAIN ROUTE WITH WORKS	0.0096
'DIVERSION'	0.0000

PIA: Personal Injury Accidents

ECONOMIC IMPACT ON ROAD USERS	
ROAD USER COSTS PER DAY	\$805
CONGESTED HOURS PER DAY*	0

\*Delays Exceeding User-Specified Maximum

**USH 41: STH 44 TO STH 26 (WINNEBAGO COUNTY)  
NIGHTTIME CLOSURE  
NO DIVERSION ROUTE (MAX QUEUE METHOD)**

**AUGUST**  
Analyzed for 2009  
Construction Season

**GRAPHICAL REPRESENTATION OF TRAFFIC MODEL INPUT AND OUTPUT**  
**SATURDAY NORTHBOUND DIRECTION**

