

**USH 41: USH 10 TO STH 114 (WINNEBAGO COUNTY)
NIGHTTIME 2 LANE CLOSURE
NO DIVERSION ROUTE (MAX QUEUE METHOD)**

OCTOBER
Analyzed for 2009
Construction Season

SUMMARY OF TRAFFIC MODEL OUTPUT

SUNDAY SOUTHBOUND DIRECTION

TIME OF DAY	FLOWS AND CAPACITY IN VEH/HR						AVERAGE SPEEDS IN MPH				
	MAIN ROUTE		SITE CAPA CITY	FLOW		AV.DEL PER VEH (MINS)	AVERAGE QUEUE (VEH)	MAIN ROUTE		SITE	
	DEMAND FLOW	PCT HEAVY		MAIN ROUTE	'DIVER TED'			WITHOUT WORK ZONE	WITH WORK ZONE		
MID-1 AM	564	0.0	1500	564	0	0.54	0	70.0	58.2	43.3	
1-2 AM	321	0.0	1500	321	0	0.51	0	70.2	58.8	44.2	
2-3 AM	293	0.0	1500	293	0	0.51	0	70.2	58.9	44.3	
3-4 AM	266	0.0	1500	266	0	0.50	0	70.2	58.9	44.4	
4-5 AM	238	0.0	1500	238	0	0.50	0	70.2	59.0	44.5	
5-6 AM	286	0.0	1500	286	0	0.51	0	70.2	58.9	44.3	
6-7 AM	442	0.0	1500	442	0	0.53	0	70.2	58.6	43.7	
7-8 AM	634	0.0	1500	634	0	0.55	0	69.9	58.0	43.0	
8-9 AM	970	0.0	1499	970	0	0.58	0	69.6	57.1	41.8	
9-10 AM	1560	0.0	OFF	1560	0	0.00	0	68.8	68.8	68.8	
10-11 AM	2095	0.0	OFF	2095	0	0.00	0	68.1	68.1	68.1	
11AM-NOON	2598	0.0	OFF	2598	0	0.00	0	67.5	67.5	67.5	
NOON-1PM	2776	0.0	OFF	2776	0	0.00	0	67.3	67.3	67.3	
1-2 PM	2937	0.0	OFF	2937	0	0.00	0	67.1	67.1	67.1	
2-3 PM	3229	0.0	OFF	3229	0	0.00	0	66.7	66.7	66.7	
3-4 PM	3531	0.0	OFF	3531	0	0.00	0	66.3	66.3	66.3	
4-5 PM	3702	0.0	OFF	3702	0	0.00	0	65.6	65.6	65.6	
5-6 PM	3377	0.0	OFF	3377	0	0.00	0	66.5	66.5	66.5	
6-7 PM	3019	0.0	OFF	3019	0	0.00	0	67.0	67.0	67.0	
7-8 PM	2082	0.0	1499	1894	188	11.49+	298	68.1	13.1	30.8	
8-9 PM	1368	0.0	1500	1368	0	14.87+	364	69.1	10.6	30.8	
9-10 PM	917	0.0	1499	917	0	1.99	69	69.6	39.9	40.1	
10-11 PM	628	0.0	1500	628	0	0.55	0	69.9	58.0	43.0	
11PM-MID	362	0.0	1500	362	0	0.52	0	70.2	58.7	44.0	

"OFF" INDICATES NO ROAD WORK (ALL LANES OPEN TO TRAFFIC)

+ INDICATES QUEUEING EXCEEDS USER-SPECIFIED MAXIMUM LIMIT

----- SITE BREAKDOWN DELAYS -----	
BREAKDOWN DURATION (MINS)	0
RANGE OF QUEUE DELAY - MIN (VEH-H) MAX	0.0
AV BREAKDOWNS PER DAY	0.00
AV QUEUE DELAY/DAY (VEH-H)	0.0
AV TOTAL DELAY/DAY (VEH-H)	0.0

----- SITE ACCIDENT DELAYS -----	
BREAKDOWN DURATION (MINS)	0
RANGE OF QUEUE DELAY - MIN (VEH-H) MAX	0
AV BREAKDOWNS PER DAY	0
AV QUEUE DELAY/DAY (VEH-H)	0
AV TOTAL DELAY/DAY (VEH-H)	0

AVERAGE ACCIDENT NUMBERS (PIA/DAY)	
MAIN ROUTE WITHOUT WORKS	0.0188
MAIN ROUTE WITH WORKS	0.0181
'DIVERSION'	0.0002
PIA: Personal Injury Accidents	
IMPACTS ON ROAD USERS	
ROAD USER COSTS PER DAY	\$13,566
CONGESTED HOURS PER DAY*	2

*Delays Exceeding User-Specified Maximum

**USH 41: USH 10 TO STH 114 (WINNEBAGO COUNTY)
 NIGHTTIME 2 LANE CLOSURE
 NO DIVERSION ROUTE (MAX QUEUE METHOD)**

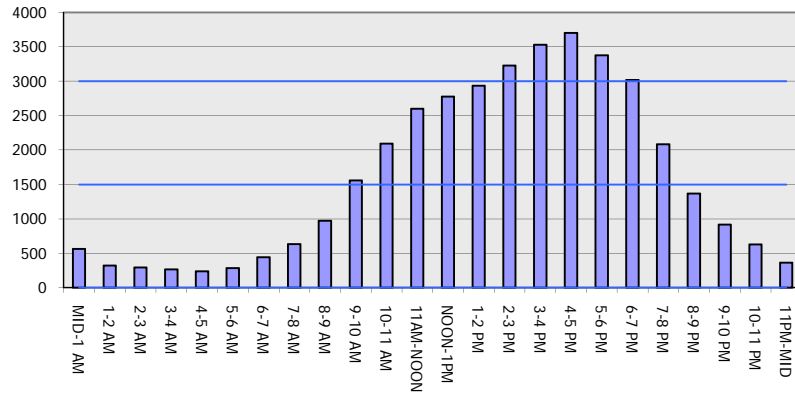
OCTOBER

Analyzed for 2009
 Construction Season

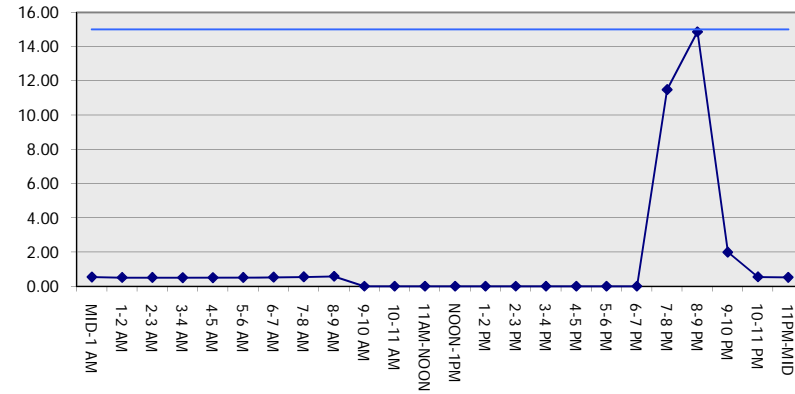
GRAPHICAL REPRESENTATION OF TRAFFIC MODEL INPUT AND OUTPUT

SUNDAY SOUTHBOUND DIRECTION

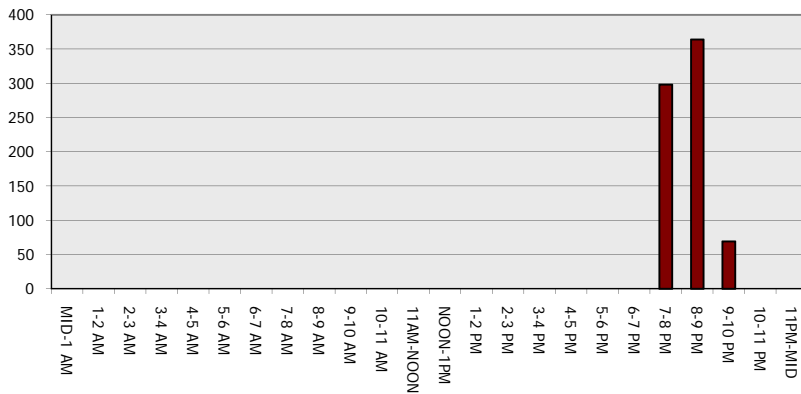
Main Route - Traffic Demand (Vehicles Per Hour)



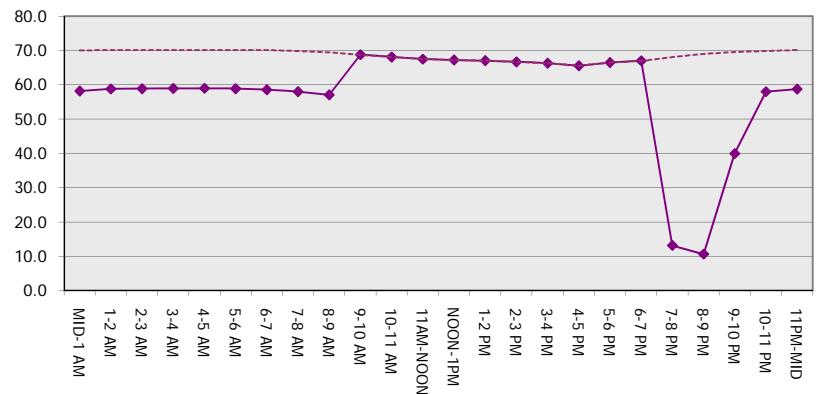
Main Route Average Delay Per Vehicle (Minutes)



Main Route - Average Queue Length (Vehicles)



Main Route - Average Speed (MPH)



USH 41: USH 10 TO STH 114 (WINNEBAGO COUNTY) NIGHTTIME 2 LANE CLOSURE NO DIVERSION ROUTE (MAX QUEUE METHOD)	OCTOBER
	Analyzed for 2009 Construction Season

SUMMARY OF TRAFFIC MODEL OUTPUT

SUNDAY NORTHBOUND DIRECTION

TIME OF DAY	FLOWS AND CAPACITY IN VEH/HR							AVERAGE SPEEDS IN MPH		
	MAIN ROUTE		SITE CAPA CITY	FLOW		AV.DEL PER VEH (MINS)	AVERAGE QUEUE (VEH)	MAIN ROUTE		SITE
	DEMAND FLOW	PCT HEAVY		MAIN ROUTE	'DIVER TED'			WITHOUT WORK ZONE	WITH WORK ZONE	
MID-1 AM	475	0.0	1500	475	0	0.53	0	70.2	58.4	43.6
1-2 AM	331	0.0	1500	331	0	0.51	0	70.2	58.8	44.2
2-3 AM	269	0.0	1500	269	0	0.51	0	70.2	58.9	44.4
3-4 AM	176	0.0	1500	176	0	0.49	0	70.2	59.1	44.8
4-5 AM	169	0.0	1500	169	0	0.49	0	70.2	59.2	44.8
5-6 AM	312	0.0	1500	312	0	0.51	0	70.2	58.8	44.2
6-7 AM	423	0.0	1500	423	0	0.52	0	70.2	58.6	43.8
7-8 AM	761	0.0	1500	761	0	0.56	0	69.8	57.6	42.5
8-9 AM	1584	0.0	1499	1584	0	1.97	35	68.7	39.7	32.1
9-10 AM	2388	0.0	OFF	2388	0	0.04	2	67.8	66.9	66.9
10-11 AM	2305	0.0	OFF	2305	0	0.00	0	67.9	67.9	67.9
11AM-NOON	2474	0.0	OFF	2474	0	0.00	0	67.7	67.7	67.7
NOON-1PM	2634	0.0	OFF	2634	0	0.00	0	67.4	67.4	67.4
1-2 PM	2428	0.0	OFF	2428	0	0.00	0	67.7	67.7	67.7
2-3 PM	2502	0.0	OFF	2502	0	0.00	0	67.6	67.6	67.6
3-4 PM	2632	0.0	OFF	2632	0	0.00	0	67.4	67.4	67.4
4-5 PM	2622	0.0	OFF	2622	0	0.00	0	67.5	67.5	67.5
5-6 PM	2520	0.0	OFF	2520	0	0.00	0	67.6	67.6	67.6
6-7 PM	2222	0.0	OFF	2222	0	0.00	0	68.0	68.0	68.0
7-8 PM	1859	0.0	1499	1859	0	7.98	207	68.4	17.4	30.8
8-9 PM	1332	0.0	1499	1332	0	12.40	302	69.1	12.3	30.8
9-10 PM	995	0.0	1500	995	0	1.57	43	69.5	43.8	40.0
10-11 PM	689	0.0	1500	689	0	0.55	0	69.9	57.9	42.8
11PM-MID	385	0.0	1500	385	0	0.52	0	70.2	58.7	44.0

"OFF" INDICATES NO ROAD WORK (ALL LANES OPEN TO TRAFFIC)

----- SITE BREAKDOWN DELAYS -----	
BREAKDOWN DURATION (MINS)	0
RANGE OF QUEUE DELAY - MIN	0.0
(VEH-H) MAX	0.0
AV BREAKDOWNS PER DAY	0.00
AV QUEUE DELAY/DAY (VEH-H)	0.0
AV TOTAL DELAY/DAY (VEH-H)	0.0

----- SITE ACCIDENT DELAYS -----	
BREAKDOWN DURATION (MINS)	0
RANGE OF QUEUE DELAY - MIN	0
(VEH-H) MAX	0
AV BREAKDOWNS PER DAY	0
AV QUEUE DELAY/DAY (VEH-H)	0
AV TOTAL DELAY/DAY (VEH-H)	0

AVERAGE ACCIDENT NUMBERS (PIA/DAY)	
MAIN ROUTE WITHOUT WORKS	0.0170
MAIN ROUTE WITH WORKS	0.0164
'DIVERSION'	0.0000

PIA: Personal Injury Accidents

ECONOMIC IMPACT ON ROAD USERS	
ROAD USER COSTS PER DAY	\$10,634
CONGESTED HOURS PER DAY*	0

*Delays Exceeding User-Specified Maximum

**USH 41: USH 10 TO STH 114 (WINNEBAGO COUNTY)
 NIGHTTIME 2 LANE CLOSURE
 NO DIVERSION ROUTE (MAX QUEUE METHOD)**

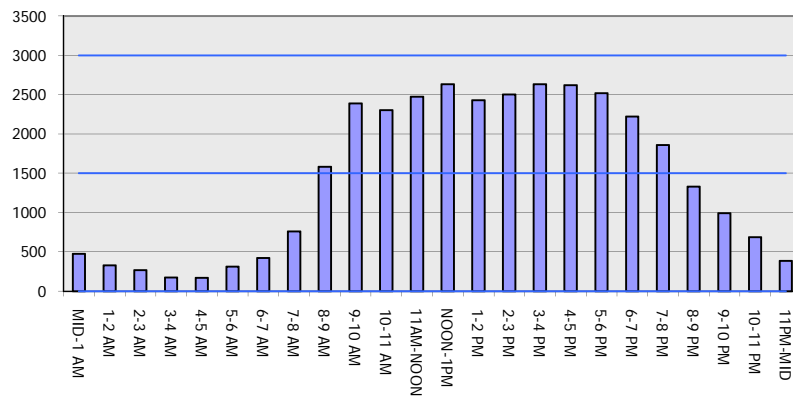
OCTOBER

Analyzed for 2009
 Construction Season

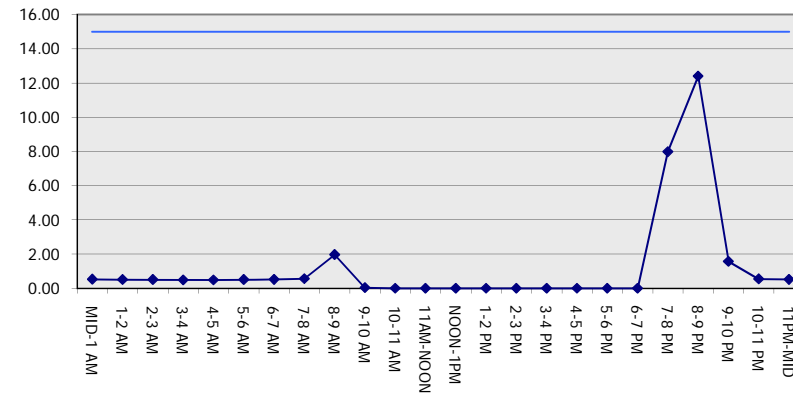
GRAPHICAL REPRESENTATION OF TRAFFIC MODEL INPUT AND OUTPUT

SUNDAY NORTHBOUND DIRECTION

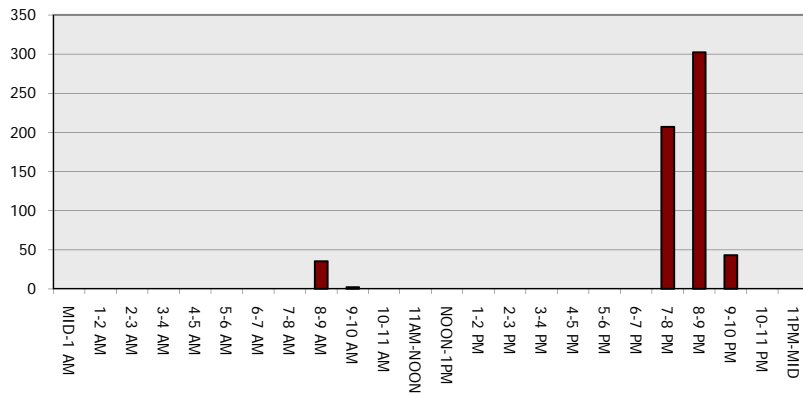
Main Route - Traffic Demand (Vehicles Per Hour)



Main Route Average Delay Per Vehicle (Minutes)



Main Route - Average Queue Length (Vehicles)



Main Route - Average Speed (MPH)

