

USH 41: USH 10 TO STH 114 (WINNEBAGO COUNTY) NIGHTTIME CLOSURE NO DIVERSION ROUTE (MAX QUEUE METHOD)	OCTOBER
	Analyzed for 2009 Construction Season

SUMMARY OF TRAFFIC MODEL OUTPUT

SUNDAY SOUTHBOUND DIRECTION

TIME OF DAY	FLOWS AND CAPACITY IN VEH/HR						AVERAGE SPEEDS IN MPH			
	MAIN ROUTE		SITE CAPA CITY	FLOW		AV.DEL PER VEH (MINS)	AVERAGE QUEUE (VEH)	MAIN ROUTE		SITE
	DEMAND FLOW	PCT HEAVY		MAIN ROUTE	'DIVER TED'			WITHOUT WORK ZONE	WITH WORK ZONE	
MID-1 AM	564	0.0	3000	564	0	0.36	0	70.0	61.7	49.7
1-2 AM	321	0.0	3000	321	0	0.36	0	70.2	61.8	49.7
2-3 AM	293	0.0	3000	293	0	0.36	0	70.2	61.8	49.7
3-4 AM	266	0.0	3000	266	0	0.36	0	70.2	61.8	49.7
4-5 AM	238	0.0	3000	238	0	0.36	0	70.2	61.8	49.7
5-6 AM	286	0.0	3000	286	0	0.36	0	70.2	61.8	49.7
6-7 AM	442	0.0	3000	442	0	0.36	0	70.2	61.8	49.7
7-8 AM	634	0.0	3000	634	0	0.36	0	69.9	61.7	49.7
8-9 AM	970	0.0	3000	970	0	0.35	0	69.6	61.5	49.7
9-10 AM	1560	0.0	OFF	1560	0	0.00	0	68.8	68.8	68.8
10-11 AM	2095	0.0	OFF	2095	0	0.00	0	68.1	68.1	68.1
11AM-NOON	2598	0.0	OFF	2598	0	0.00	0	67.5	67.5	67.5
NOON-1PM	2776	0.0	OFF	2776	0	0.00	0	67.3	67.3	67.3
1-2 PM	2937	0.0	OFF	2937	0	0.00	0	67.1	67.1	67.1
2-3 PM	3229	0.0	OFF	3229	0	0.00	0	66.7	66.7	66.7
3-4 PM	3531	0.0	OFF	3531	0	0.00	0	66.3	66.3	66.3
4-5 PM	3702	0.0	OFF	3702	0	0.00	0	65.6	65.6	65.6
5-6 PM	3377	0.0	OFF	3377	0	0.00	0	66.5	66.5	66.5
6-7 PM	3019	0.0	OFF	3019	0	0.00	0	67.0	67.0	67.0
7-8 PM	2082	0.0	3000	2082	0	0.33	0	68.1	60.7	49.7
8-9 PM	1368	0.0	3000	1368	0	0.34	0	69.1	61.2	49.7
9-10 PM	917	0.0	3000	917	0	0.35	0	69.6	61.5	49.7
10-11 PM	628	0.0	3000	628	0	0.36	0	69.9	61.7	49.7
11PM-MID	362	0.0	3000	362	0	0.36	0	70.2	61.8	49.7

"OFF" INDICATES NO ROAD WORK (ALL LANES OPEN TO TRAFFIC)

----- SITE BREAKDOWN DELAYS -----	
BREAKDOWN DURATION (MINS)	0
RANGE OF QUEUE DELAY - MIN (VEH-H) MAX	0.0
AV BREAKDOWNS PER DAY	0.00
AV QUEUE DELAY/DAY (VEH-H)	0.0
AV TOTAL DELAY/DAY (VEH-H)	0.0

----- SITE ACCIDENT DELAYS -----	
BREAKDOWN DURATION (MINS)	0
RANGE OF QUEUE DELAY - MIN (VEH-H) MAX	0
AV BREAKDOWNS PER DAY	0
AV QUEUE DELAY/DAY (VEH-H)	0
AV TOTAL DELAY/DAY (VEH-H)	0

AVERAGE ACCIDENT NUMBERS (PIA/DAY)	
MAIN ROUTE WITHOUT WORKS	0.0188
MAIN ROUTE WITH WORKS	0.0182
'DIVERSION'	0.0000
<small>PIA: Personal Injury Accidents</small>	
IMPACTS ON ROAD USERS	
ROAD USER COSTS PER DAY	\$741
CONGESTED HOURS PER DAY*	0

*Delays Exceeding User-Specified Maximum

**USH 41: USH 10 TO STH 114 (WINNEBAGO COUNTY)
NIGHTTIME CLOSURE
NO DIVERSION ROUTE (MAX QUEUE METHOD)**

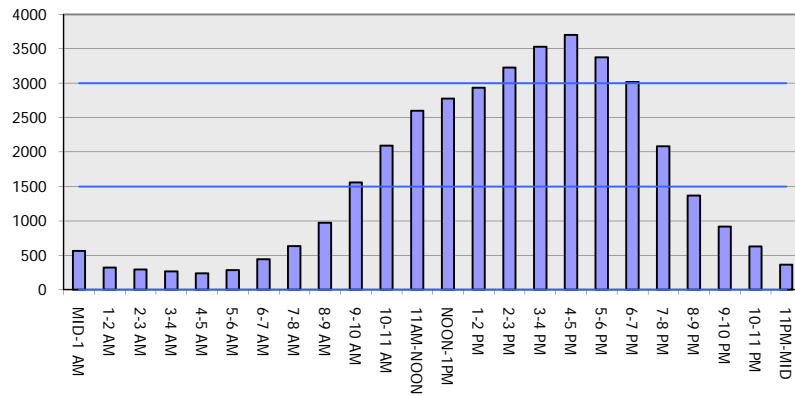
OCTOBER

Analyzed for 2009
Construction Season

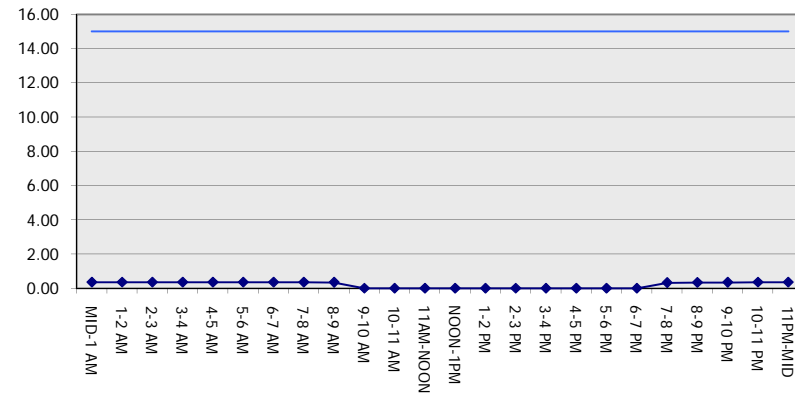
GRAPHICAL REPRESENTATION OF TRAFFIC MODEL INPUT AND OUTPUT

SUNDAY SOUTHBOUND DIRECTION

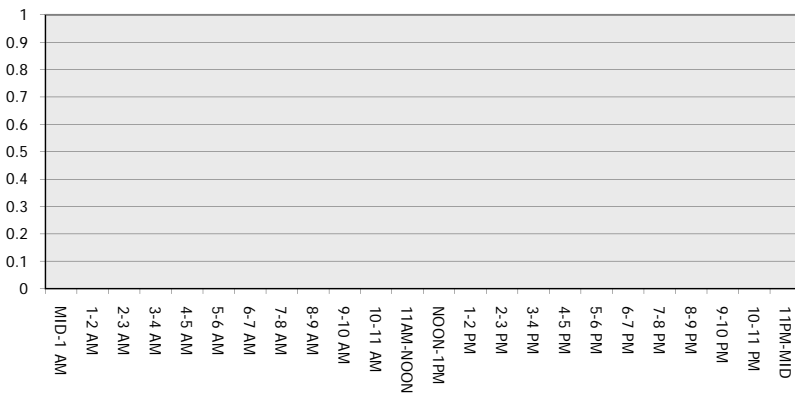
Main Route - Traffic Demand (Vehicles Per Hour)



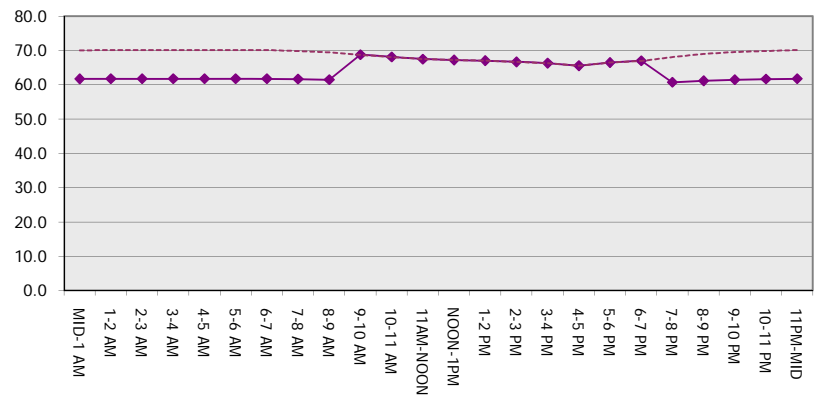
Main Route Average Delay Per Vehicle (Minutes)



Main Route - Average Queue Length (Vehicles)



Main Route - Average Speed (MPH)



USH 41: USH 10 TO STH 114 (WINNEBAGO COUNTY) NIGHTTIME CLOSURE NO DIVERSION ROUTE (MAX QUEUE METHOD)	OCTOBER
	Analyzed for 2009 Construction Season

SUMMARY OF TRAFFIC MODEL OUTPUT

SUNDAY NORTHBOUND DIRECTION

TIME OF DAY	FLOWS AND CAPACITY IN VEH/HR							AVERAGE SPEEDS IN MPH		
	MAIN ROUTE		SITE CAPA CITY	FLOW		AV.DEL PER VEH (MINS)	AVERAGE QUEUE (VEH)	MAIN ROUTE		SITE
	DEMAND FLOW	PCT HEAVY		MAIN ROUTE	'DIVER TED'			WITHOUT WORK ZONE	WITH WORK ZONE	
MID-1 AM	475	0.0	3000	475	0	0.36	0	70.2	61.8	49.7
1-2 AM	331	0.0	3000	331	0	0.36	0	70.2	61.8	49.7
2-3 AM	269	0.0	3000	269	0	0.36	0	70.2	61.8	49.7
3-4 AM	176	0.0	3000	176	0	0.36	0	70.2	61.8	49.7
4-5 AM	169	0.0	3000	169	0	0.36	0	70.2	61.8	49.7
5-6 AM	312	0.0	3000	312	0	0.36	0	70.2	61.8	49.7
6-7 AM	423	0.0	3000	423	0	0.36	0	70.2	61.8	49.7
7-8 AM	761	0.0	3000	761	0	0.35	0	69.8	61.6	49.7
8-9 AM	1584	0.0	3000	1584	0	0.34	0	68.7	61.0	49.7
9-10 AM	2388	0.0	OFF	2388	0	0.00	0	67.8	67.8	67.8
10-11 AM	2305	0.0	OFF	2305	0	0.00	0	67.9	67.9	67.9
11AM-NOON	2474	0.0	OFF	2474	0	0.00	0	67.7	67.7	67.7
NOON-1PM	2634	0.0	OFF	2634	0	0.00	0	67.4	67.4	67.4
1-2 PM	2428	0.0	OFF	2428	0	0.00	0	67.7	67.7	67.7
2-3 PM	2502	0.0	OFF	2502	0	0.00	0	67.6	67.6	67.6
3-4 PM	2632	0.0	OFF	2632	0	0.00	0	67.4	67.4	67.4
4-5 PM	2622	0.0	OFF	2622	0	0.00	0	67.5	67.5	67.5
5-6 PM	2520	0.0	OFF	2520	0	0.00	0	67.6	67.6	67.6
6-7 PM	2222	0.0	OFF	2222	0	0.00	0	68.0	68.0	68.0
7-8 PM	1859	0.0	3000	1859	0	0.34	0	68.4	60.9	49.7
8-9 PM	1332	0.0	3000	1332	0	0.35	0	69.1	61.2	49.7
9-10 PM	995	0.0	3000	995	0	0.35	0	69.5	61.4	49.7
10-11 PM	689	0.0	3000	689	0	0.36	0	69.9	61.7	49.7
11PM-MID	385	0.0	3000	385	0	0.36	0	70.2	61.8	49.7

"OFF" INDICATES NO ROAD WORK (ALL LANES OPEN TO TRAFFIC)

----- SITE BREAKDOWN DELAYS -----	
BREAKDOWN DURATION (MINS)	0
RANGE OF QUEUE DELAY - MIN (VEH-H) MAX	0.0
AV BREAKDOWNS PER DAY	0.00
AV QUEUE DELAY/DAY (VEH-H)	0.0
AV TOTAL DELAY/DAY (VEH-H)	0.0

----- SITE ACCIDENT DELAYS -----	
BREAKDOWN DURATION (MINS)	0
RANGE OF QUEUE DELAY - MIN (VEH-H) MAX	0
AV BREAKDOWNS PER DAY	0
AV QUEUE DELAY/DAY (VEH-H)	0
AV TOTAL DELAY/DAY (VEH-H)	0

AVERAGE ACCIDENT NUMBERS (PIA/DAY)	
MAIN ROUTE WITHOUT WORKS	0.0170
MAIN ROUTE WITH WORKS	0.0164
'DIVERSION'	0.0000

PIA: Personal Injury Accidents

ECONOMIC IMPACT ON ROAD USERS	
ROAD USER COSTS PER DAY	\$775
CONGESTED HOURS PER DAY*	0

*Delays Exceeding User-Specified Maximum

**USH 41: USH 10 TO STH 114 (WINNEBAGO COUNTY)
NIGHTTIME CLOSURE
NO DIVERSION ROUTE (MAX QUEUE METHOD)**

OCTOBER

Analyzed for 2009
Construction Season

GRAPHICAL REPRESENTATION OF TRAFFIC MODEL INPUT AND OUTPUT
SUNDAY NORTHBOUND DIRECTION

